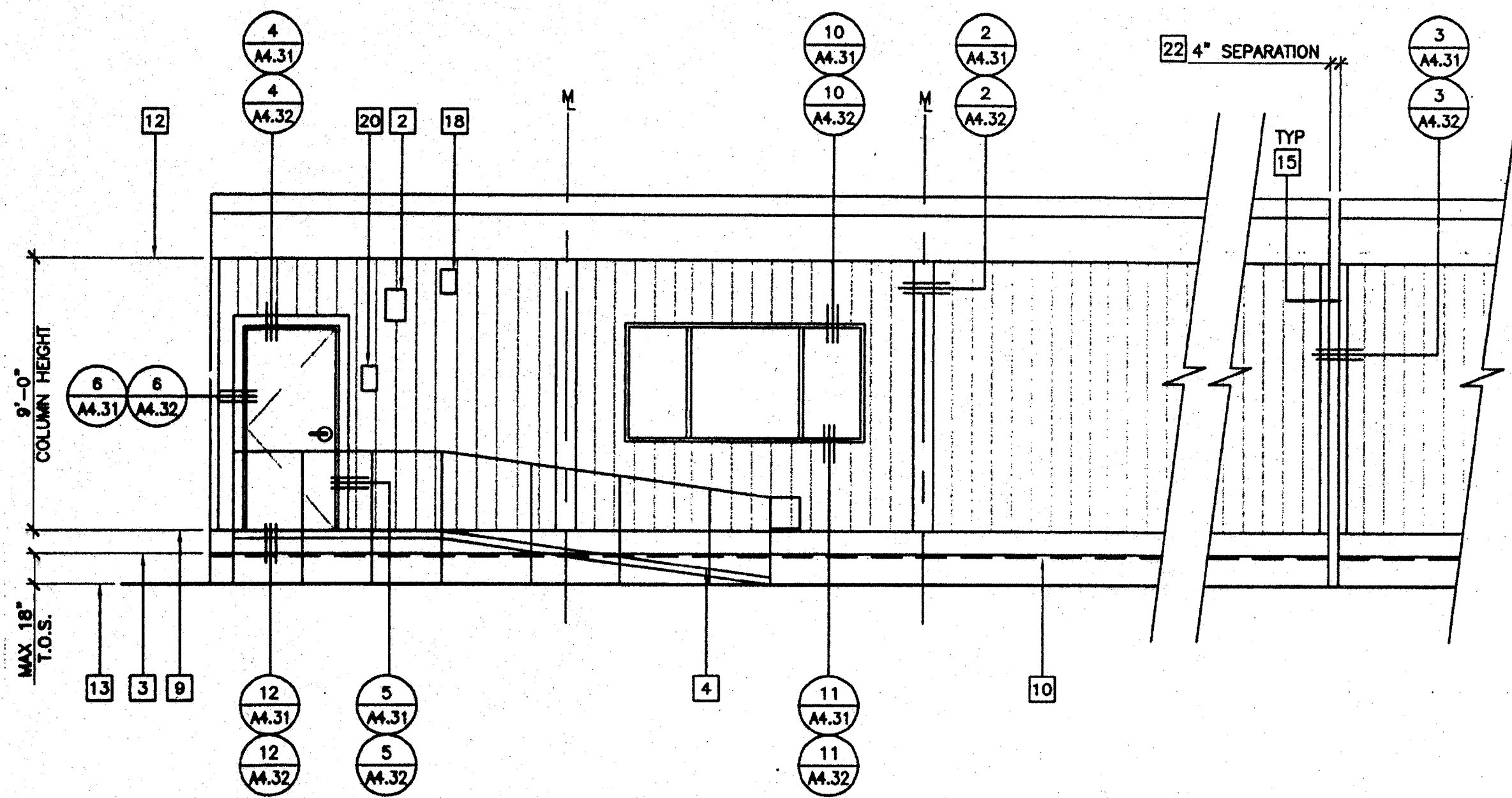


KEY NOTES

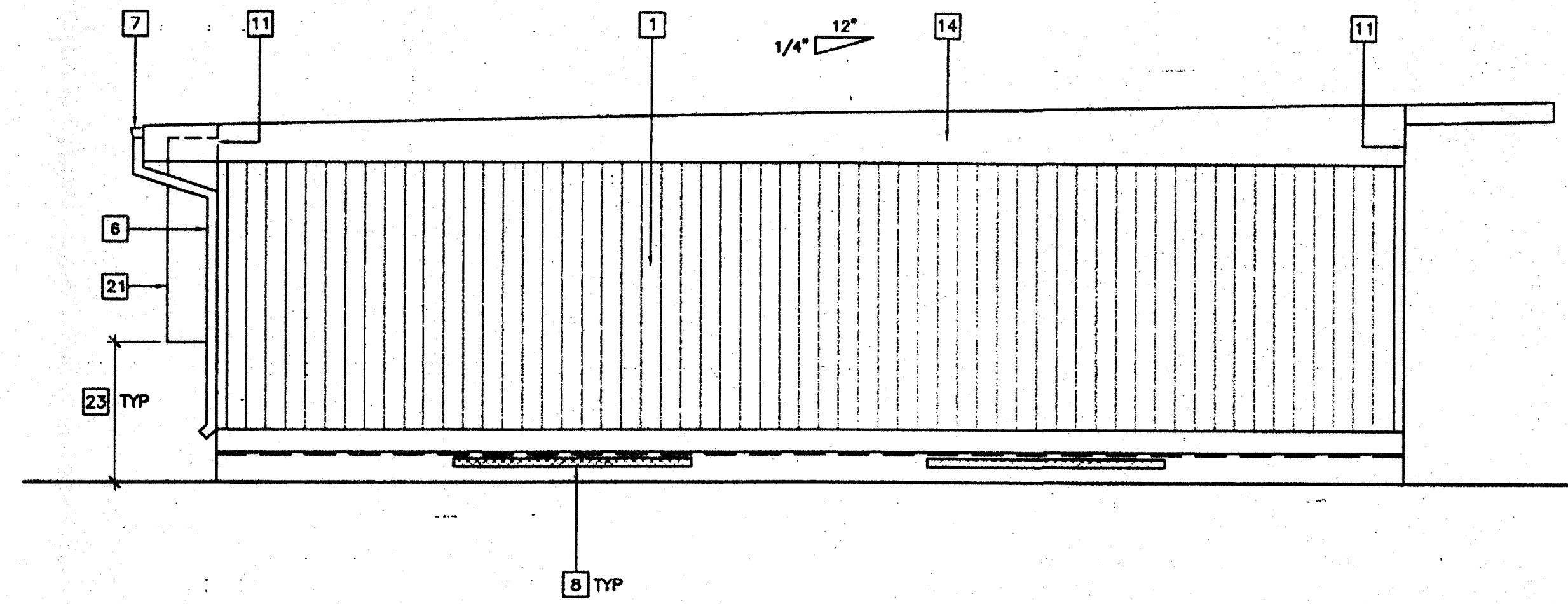
- 1 TYPICAL EXTERIOR FINISH (SEE EXTERIOR FINISH SCHEDULE BELOW)
- 2 EXTERIOR LIGHT FIXTURE (EL)
- 3 TOP OF SKIRTING (T.O.S.)
- 4 RAMP AND LANDING. SEE SHEETS R1 THRU R4 (RAMP)
- 5 NOT USED
- 6 DOWNSPOUT FASTEN TO BUILDING TYPICAL (3) PLACES
- 7 CONTINUOUS GUTTER WITH DOWNSPOUT (LOCATION OF DOWNSPOUT SHOWN ON ROOF PLAN - A2)
- 8 FOUNDATION VENT (SEE FOUNDATION PLAN - F1)
- 9 FINISH FLOOR LINE
- 10 FLOOR BEAM (STR)
- 11 ROOF HEADER (STR)
- 12 TOP OF COLUMN
- 13 FINISH GRADE
- 14 ROOF BEAM (STR)
- 15 COLUMN (STR)
- 16 ELECTRICAL STUB-OUT (EL)
- 17 GROUND STUB-OUT (EL)
- 18 J-BOX FOR EXTERIOR FIRE ALARM HORN (EL)
- 19 GUTTER BOX (EL)
- 20 SIGNAGE PROVIDED AND INSTALLED BY DISTRICT PRIOR TO OCCUPANCY. SEE SHEET A6.01
- 21 HVAC UNIT (HV)
- 22 4" SEPARATION AS REQUIRED PER FLOOR PLAN
- 23 IF HVAC UNIT IS LOCATED IN ANY PATH OF TRAVEL OR CIRCULATION AREA AND HEIGHT FROM GRADE TO BOTTOM OF UNIT EXCEEDS 27" THEN PROTECTION MUST BE PROVIDED BY DISTRICT PRIOR TO OCCUPANCY

EXTERIOR FINISH SCHEDULE

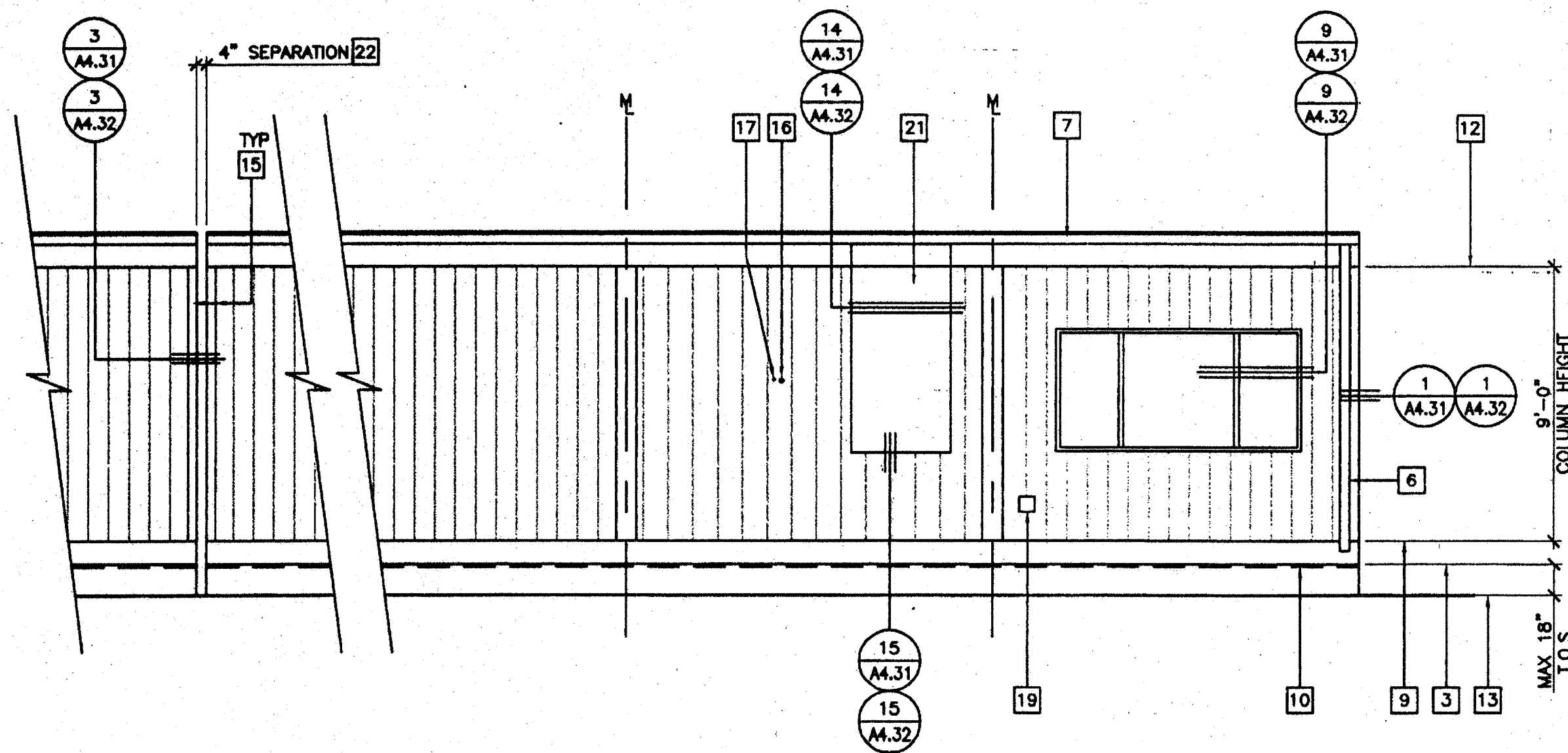
NOTE: SEE SPECIFICATIONS FOR DETAILED DESCRIPTION OF FINISH OPTIONS.
 STANDARD - 5/8" PLYWOOD SIDING
 OPTIONAL - 5/16" GROOVED FIBER CEMENT BOARD
 OPTIONAL - 5/16" FIBER CEMENT BOARD WITH TEXTURED ELASTOMERIC COATING SYSTEM



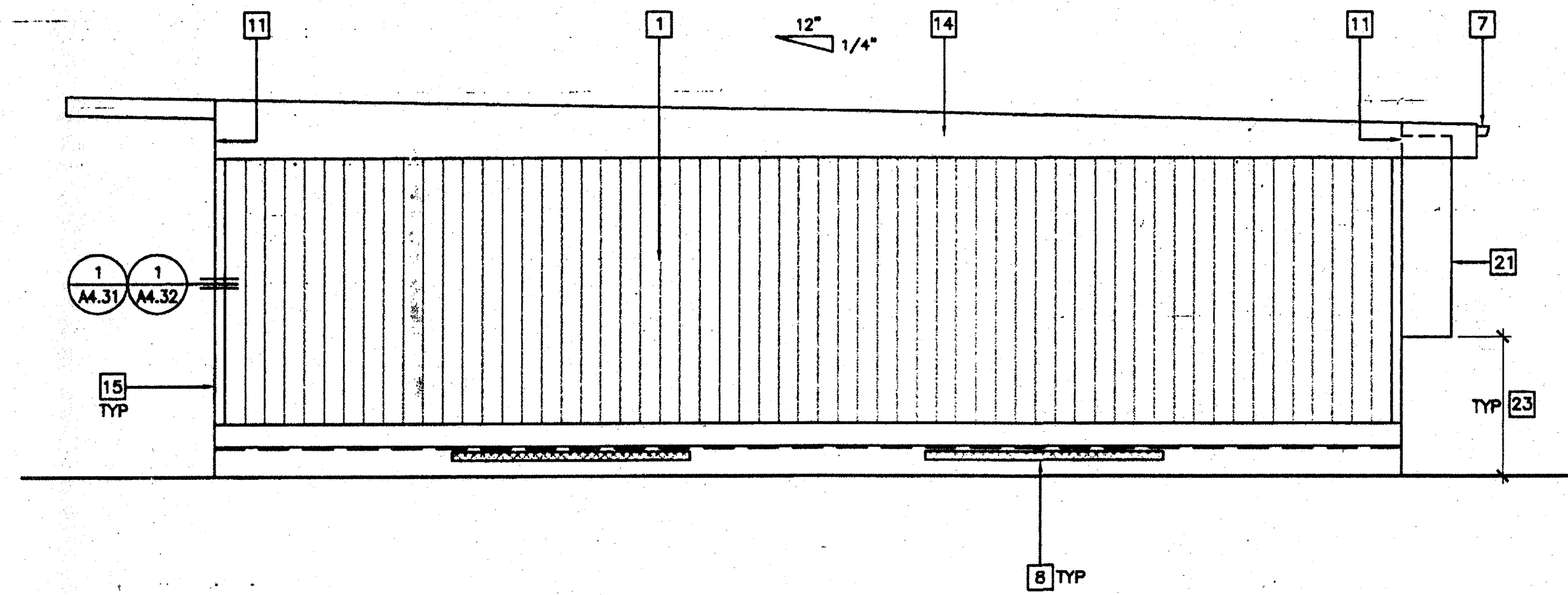
1 FRONT ELEVATION



2 LEFT SIDE ELEVATION



3 REAR ELEVATION



4 RIGHT SIDE ELEVATION

DATE SIGNED
APR 30 2003

PC
CBC 2001

EXTERIOR ELEVATIONS

26 GA/MONO PITCH
SCALE: 1/4" = 1'-0"

IDENTIFICATION STAMP
DIV. OF THE STATE ARCHITECT
OFFICE OF REGULATION SERVICES
04 105299
AC [Signature]
DATE MAY 22 2003

4012-125

REVISIONS

AGENCY TRACKING NO. 82231-267
FILE NO. 15-8
IDENTIFICATION STAMP
DIV. OF THE STATE ARCHITECT
03118235
AC [Signature] SB [Signature]
DATE JUL 11 2001

PC Professional of Record Seal
Architects Seal
STATE OF CALIFORNIA
LICENSE EXPIRES 6-30-2004

LICENSED ARCHITECT
STATE OF CALIFORNIA
No. 2802
DATE 5/22/03

IDENTIFICATION STAMP
DIV. OF THE STATE ARCHITECT
OFFICE OF REGULATION SERVICES
PC-04
104801
AC [Signature] SB [Signature]
DATE 5/22/03

MODTECHTM
2830 BARRETT AVENUE PH (909) 943-4014
PERRIS, CALIF. 92571 FAX (909) 940-0427

PROJECT NUMBER: © MODTECH, INC. 2002
DRAWN BY: STKP-70
DATE: 05-22-03
CLASS LEASING INC STOCKPILE # 70
100-24 x 40 CLASSROOM BUILDINGS
4012-125 05-22-2003 80 MPH
EXTERIOR ELEVATIONS 26 GA MONO PITCH

MODTECH Index No.
A4.02

PROJECT NO. PC-04-104801 FILE PATH: 2440-A4.02.DWG