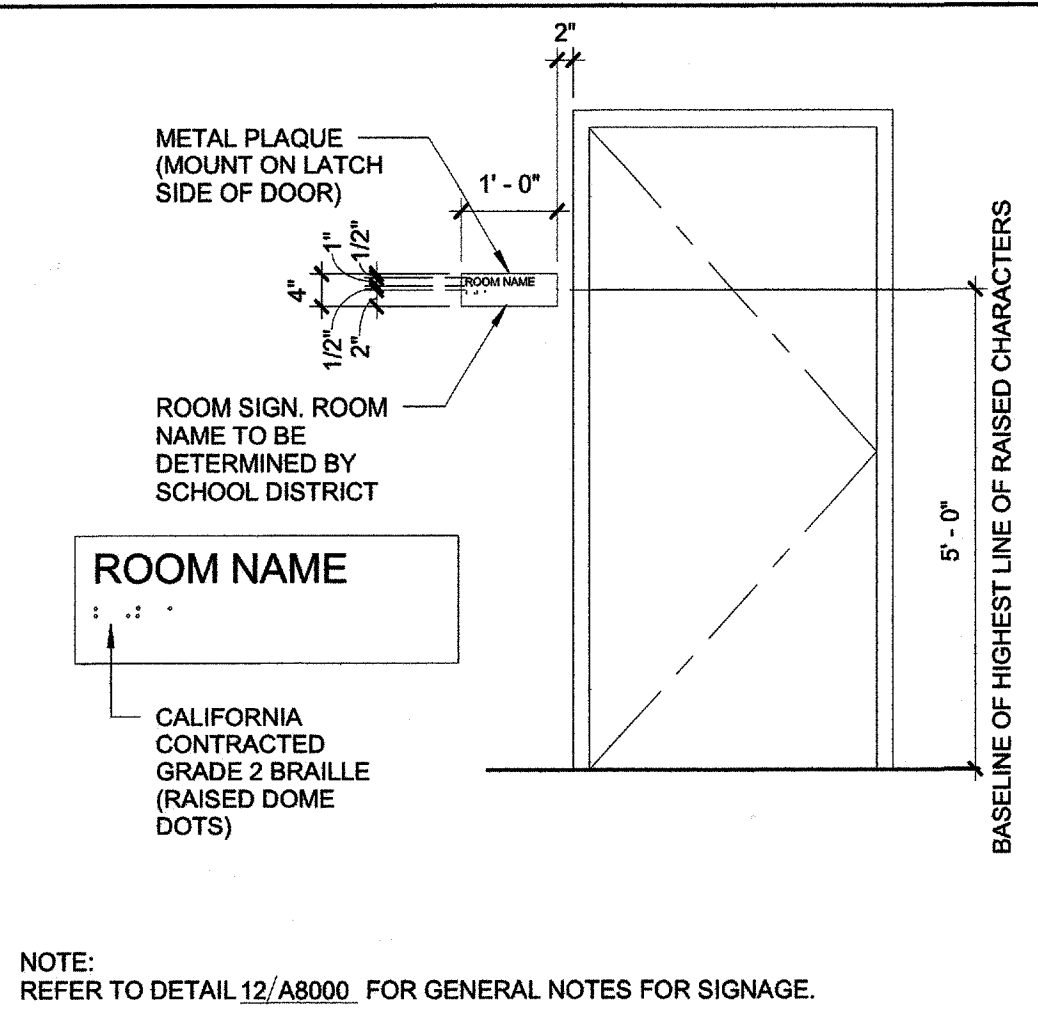


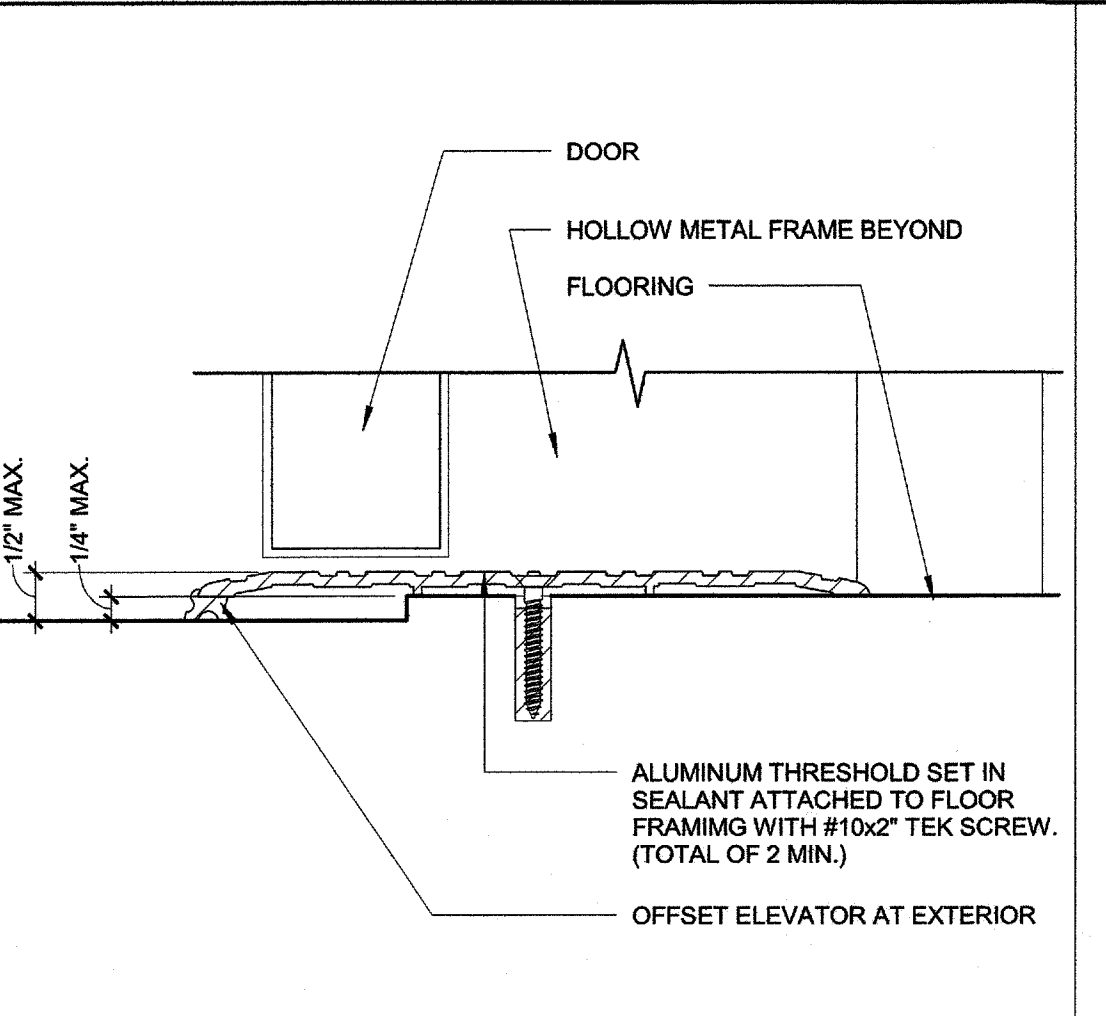
20 AC TO (E) AC PAVING 1 1/2" = 1'-0"

- NOTES APPLICABLE TO BLDG SIGNAGE DETAILS 8/A8000**
1. ALL SYMBOLS AND LETTERS TO BE RAISED 1/32" ABOVE SIGN/PLAQUE SURFACE TYP. (U.O.N.) AND SHALL BE AN INTEGRAL PART OF THE SIGN. CONTRAST BETWEEN SYMBOLS, LETTERS, CHARACTERS AND BACKGROUND MUST BE 70% MIN.
 2. ALL SIGNS TO HAVE A COLOR WHICH CONTRASTS 70% MIN. WITH DOOR COLOR.
 3. ALL PLAQUES TO HAVE A COLOR WHICH CONTRASTS WITH THE WALL ADJACENT TO THE LATCH SIDE OF THE DOOR.
 4. REFER TO ABOVE DETAIL ACCESSIBILITY SIGN(S) LOCATION AND ELEVATION FOR SIGN/PLAQUE LOCATION INFORMATION.
 5. CALIFORNIA GRADE 2 BRAILLE DOTS SHALL BE 1/16" (2.54mm) ON CENTERS IN EACH CELL WITH 2/10" (5.08 mm) SPACE BETWEEN CELLS. DOTS SHALL BE RAISED A MIN. OF 1/40" (0.635 mm) ABOVE THE BACKGROUND.
 6. ALL SIGNS AND IDENTIFICATION SHALL COMPLY WITH C&C 113-703.
 - 7.

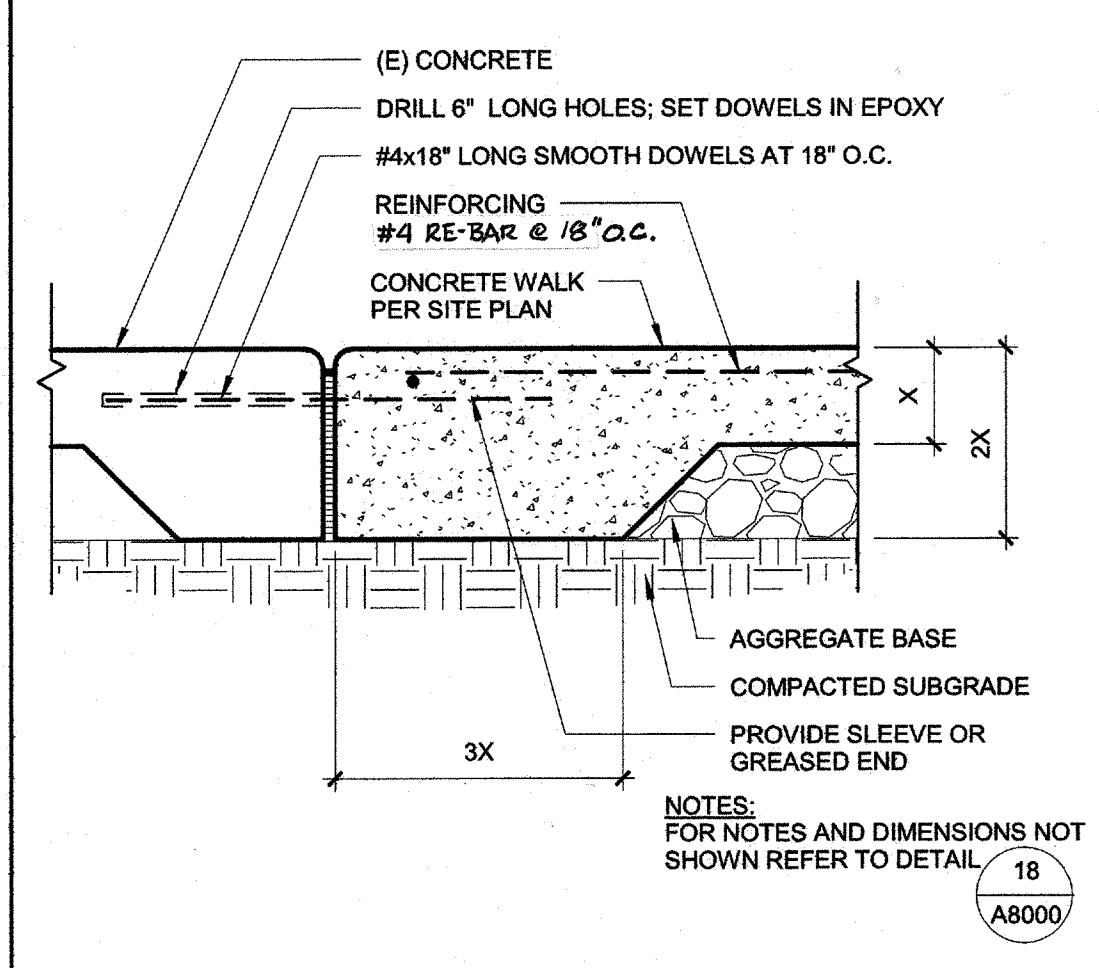
12 SIGNAGE NOTES 1/8" = 1'-0"



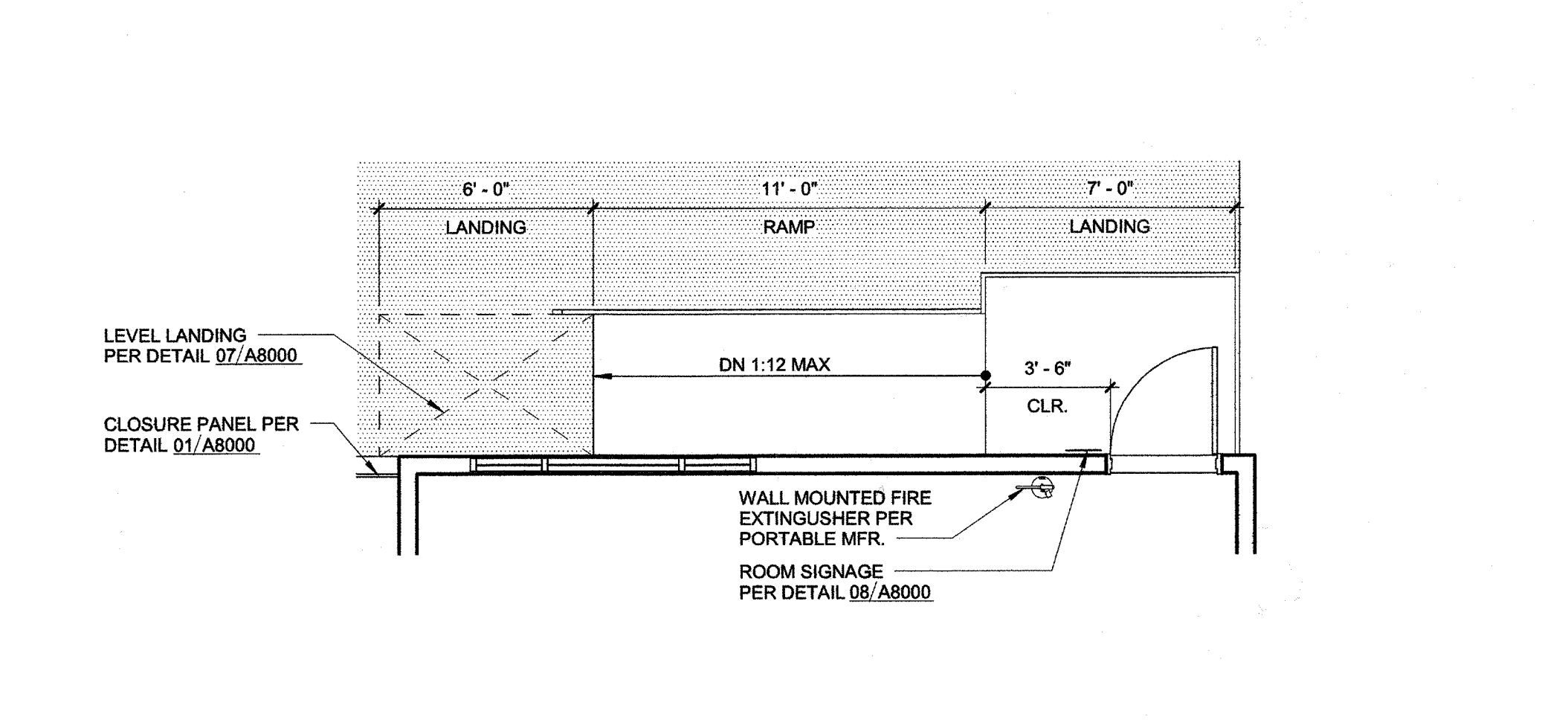
08 ROOM SIGNAGE 1/2" = 1'-0"



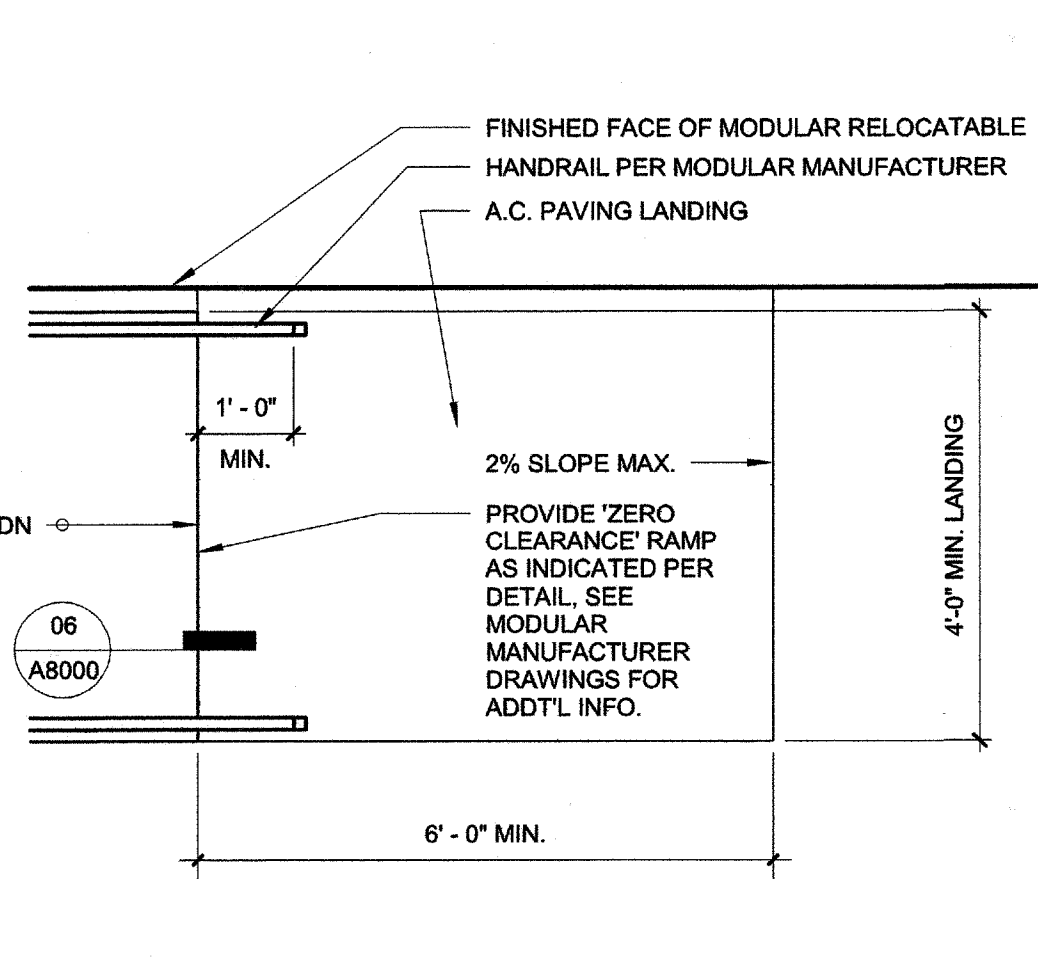
04 THRESHOLD 6" = 1'-0"



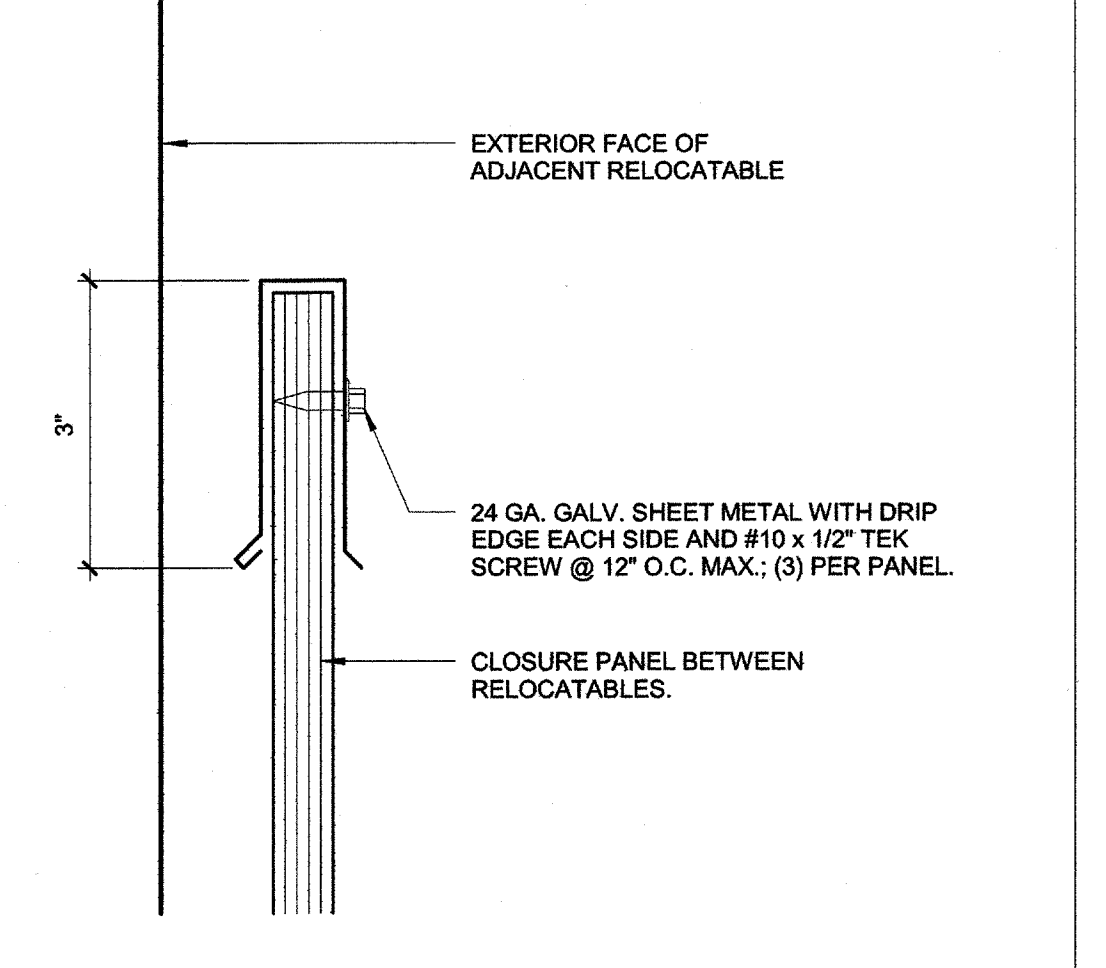
19 CONC. TO (E) CONC. 1 1/2" = 1'-0"



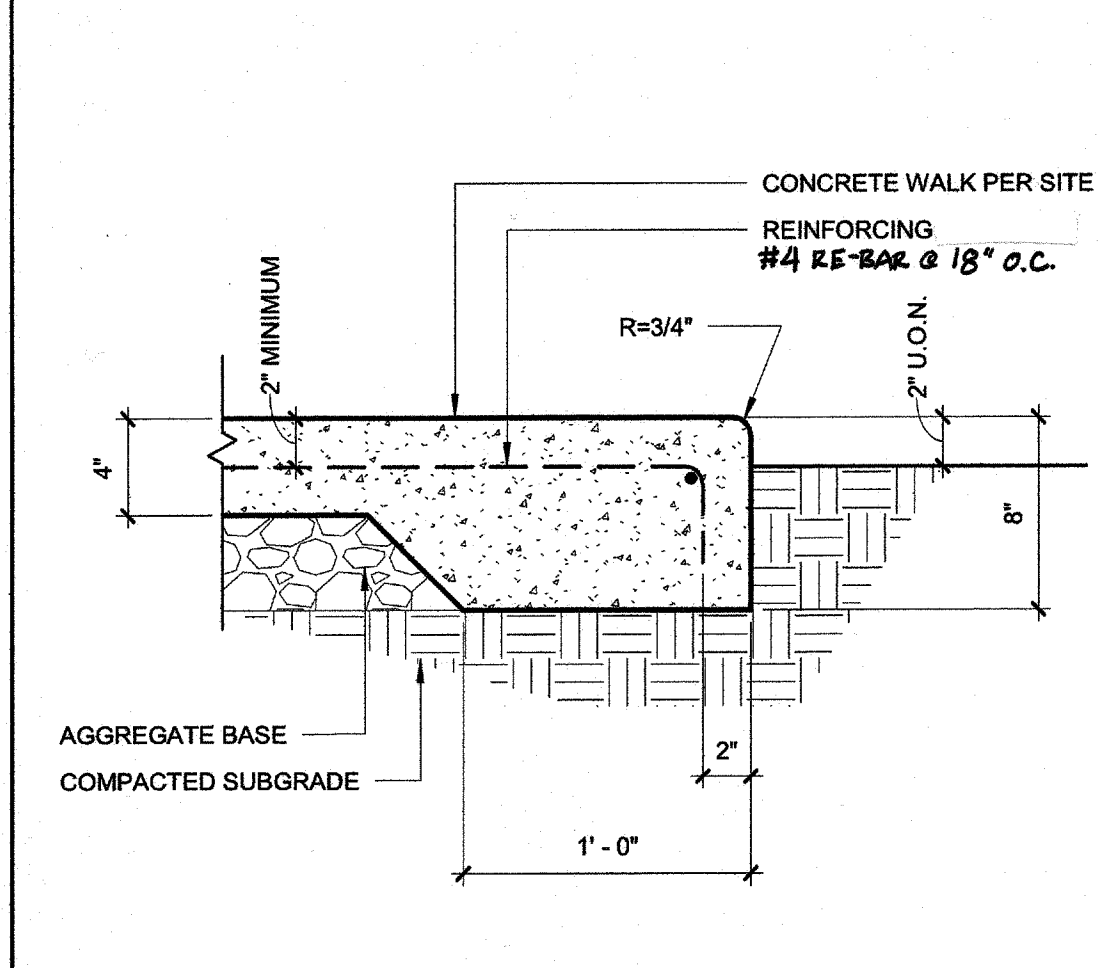
15 TYPICAL RAMP 1/4" = 1'-0"



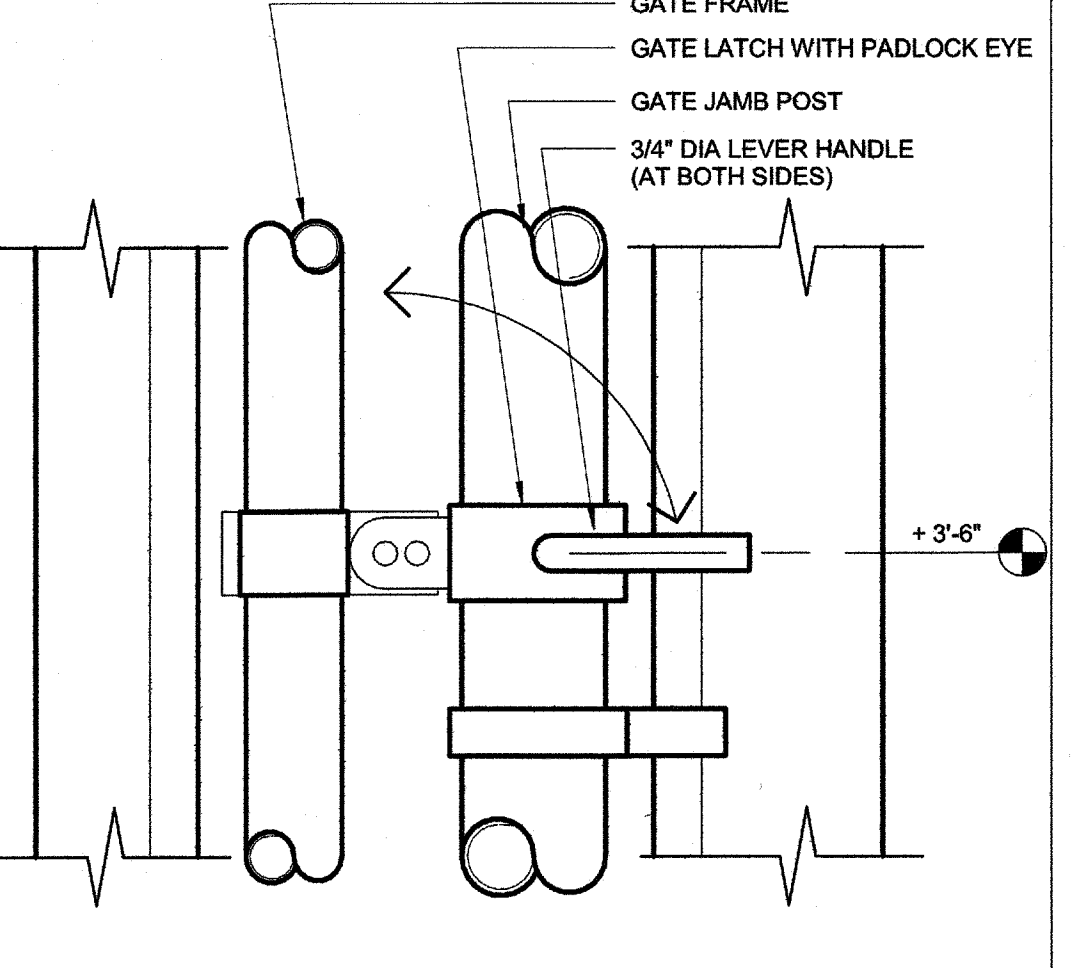
07 RAMP LANDING 1/2" = 1'-0"



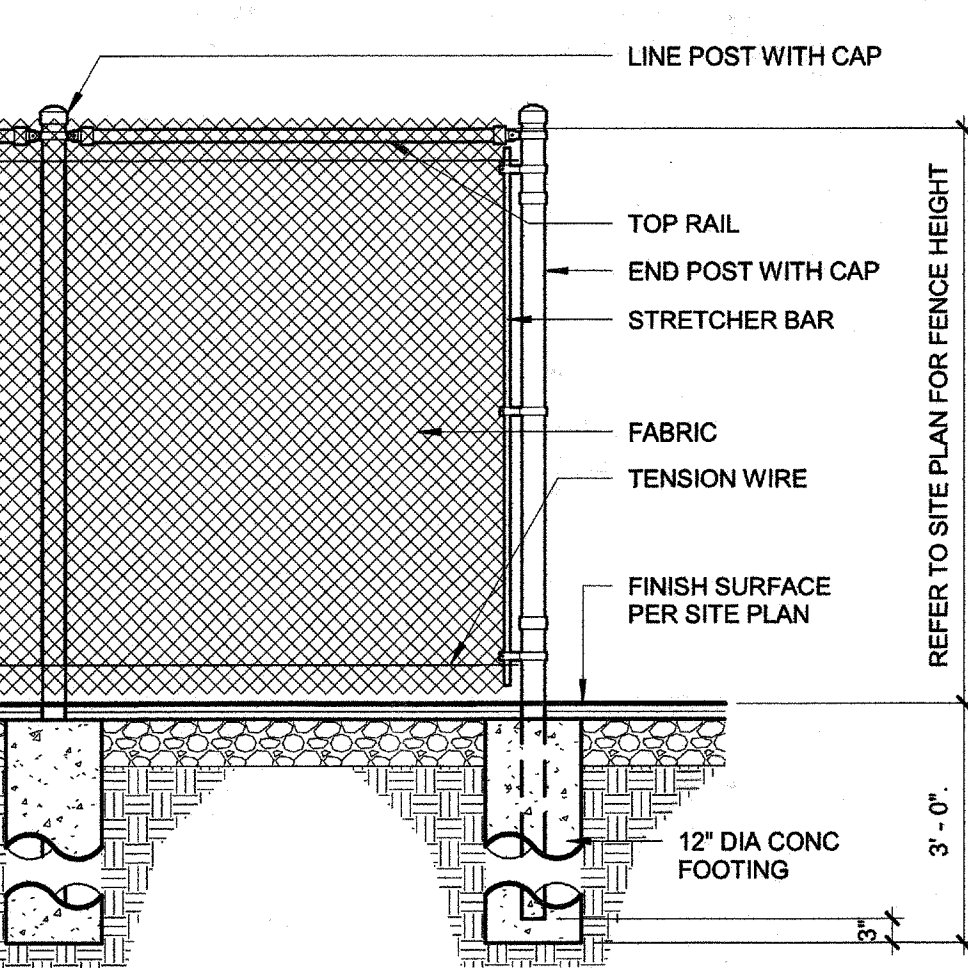
03 PANEL CAP 6" = 1'-0"



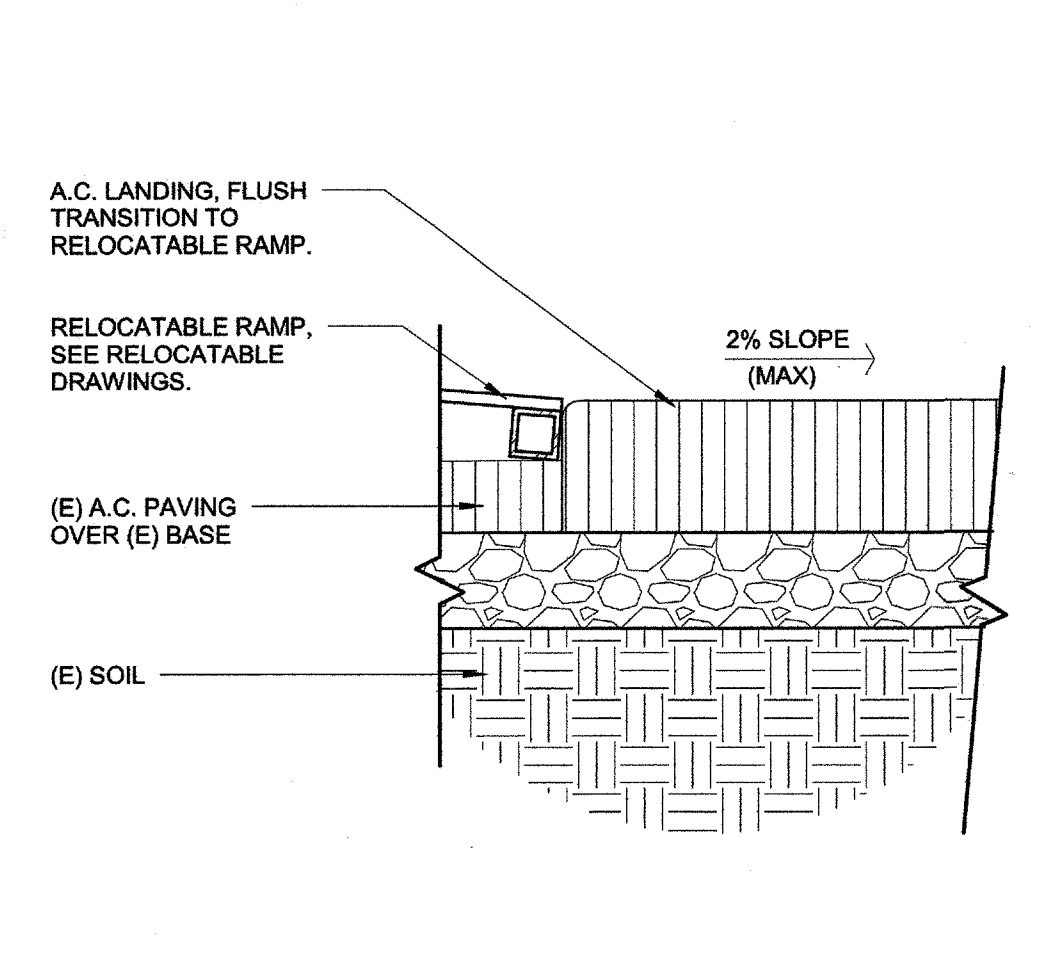
18 WALKWAY EDGE 1 1/2" = 1'-0"



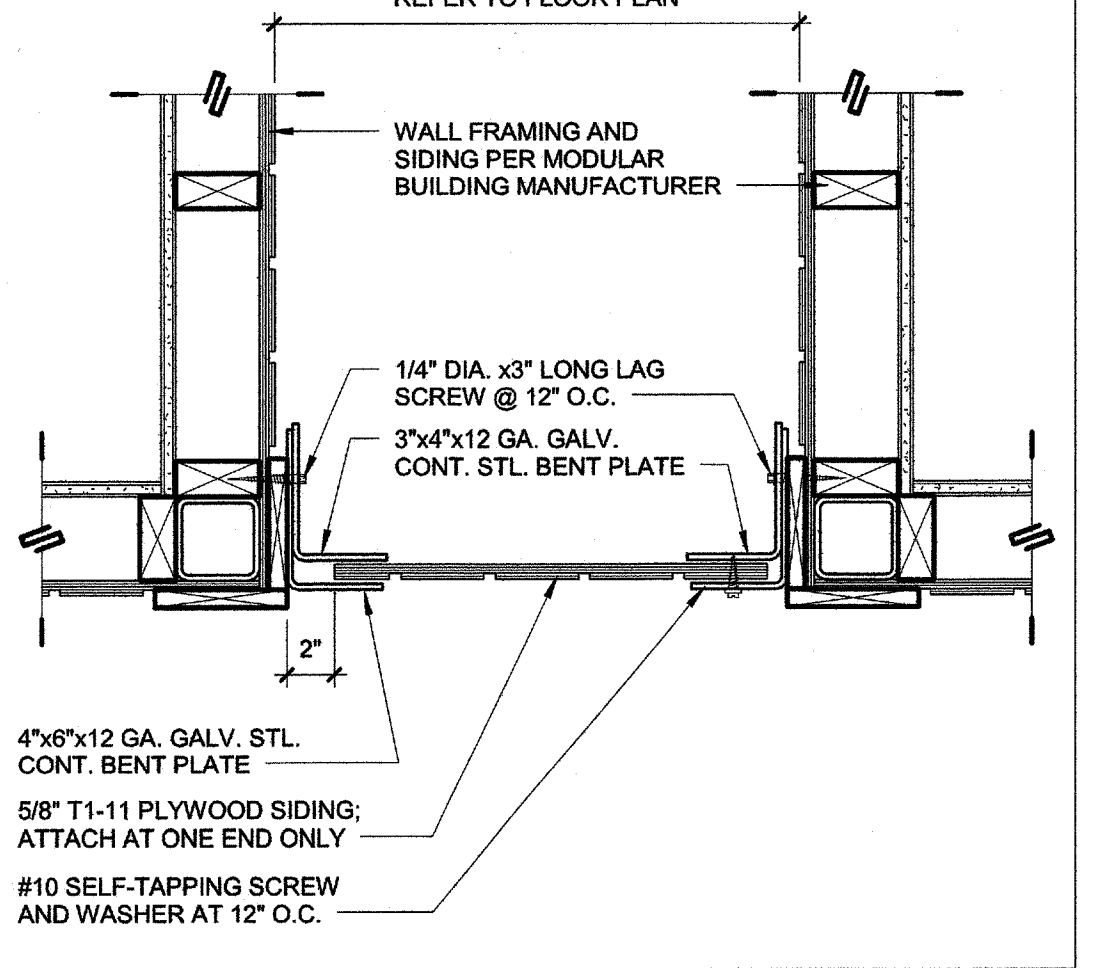
14 ACC. GATE LATCH 3" = 1'-0"



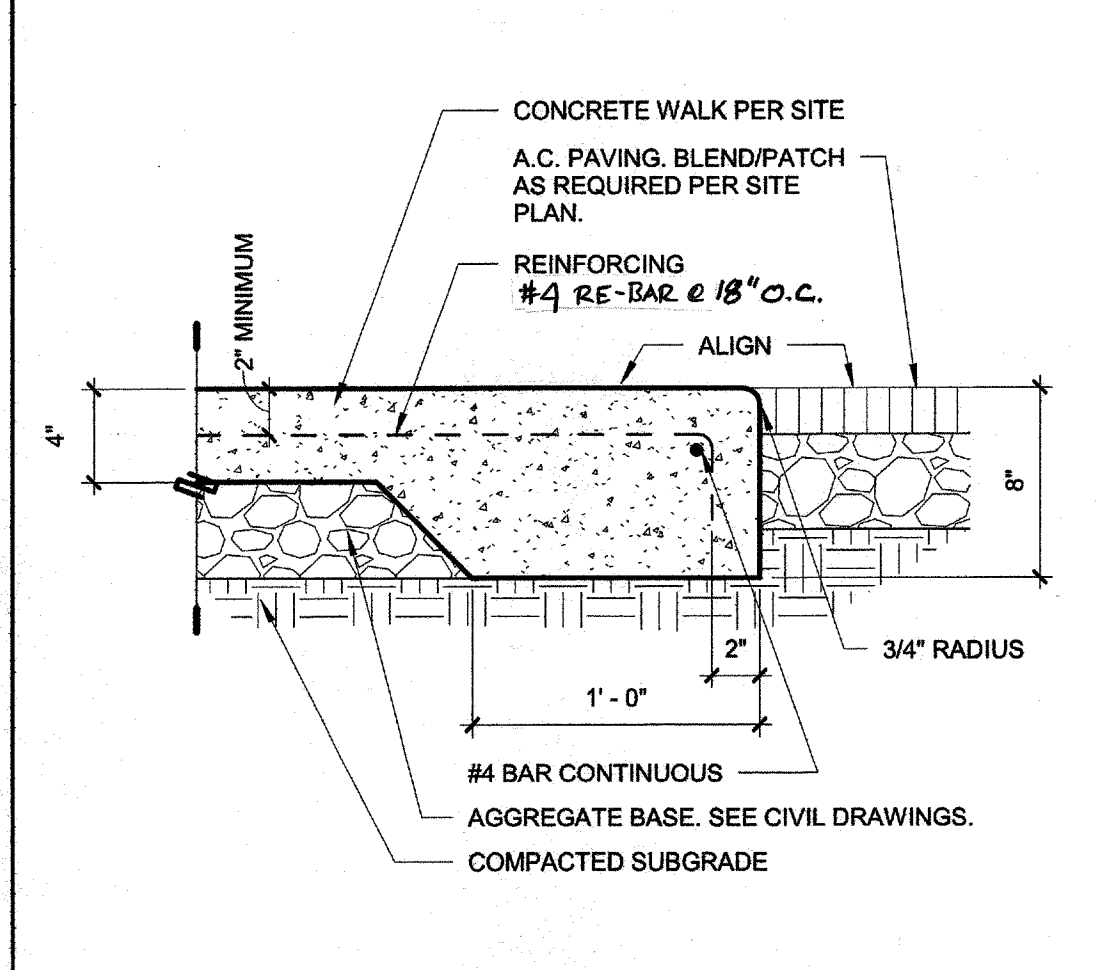
10 CHAIN LINK FENCE 1/2" = 1'-0"



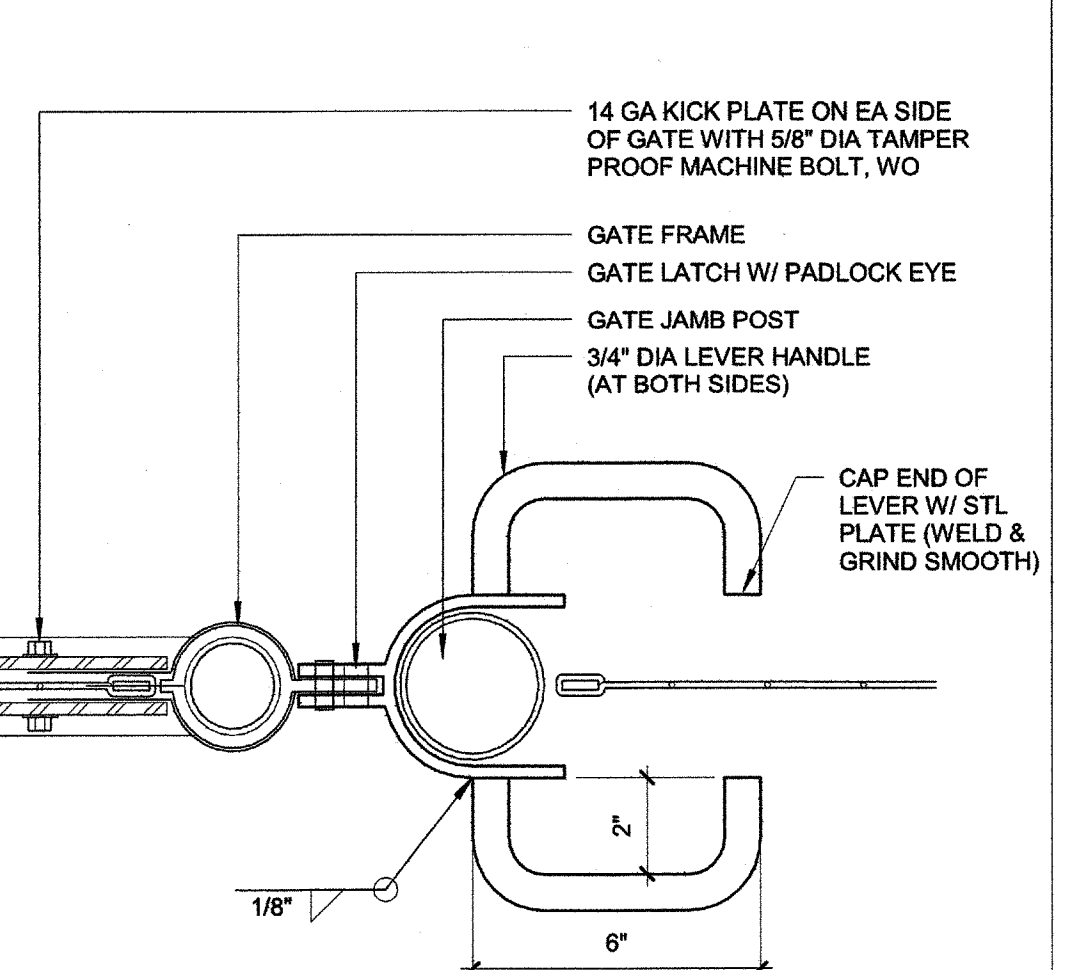
06 CONC. TO RAMP 1 1/2" = 1'-0"



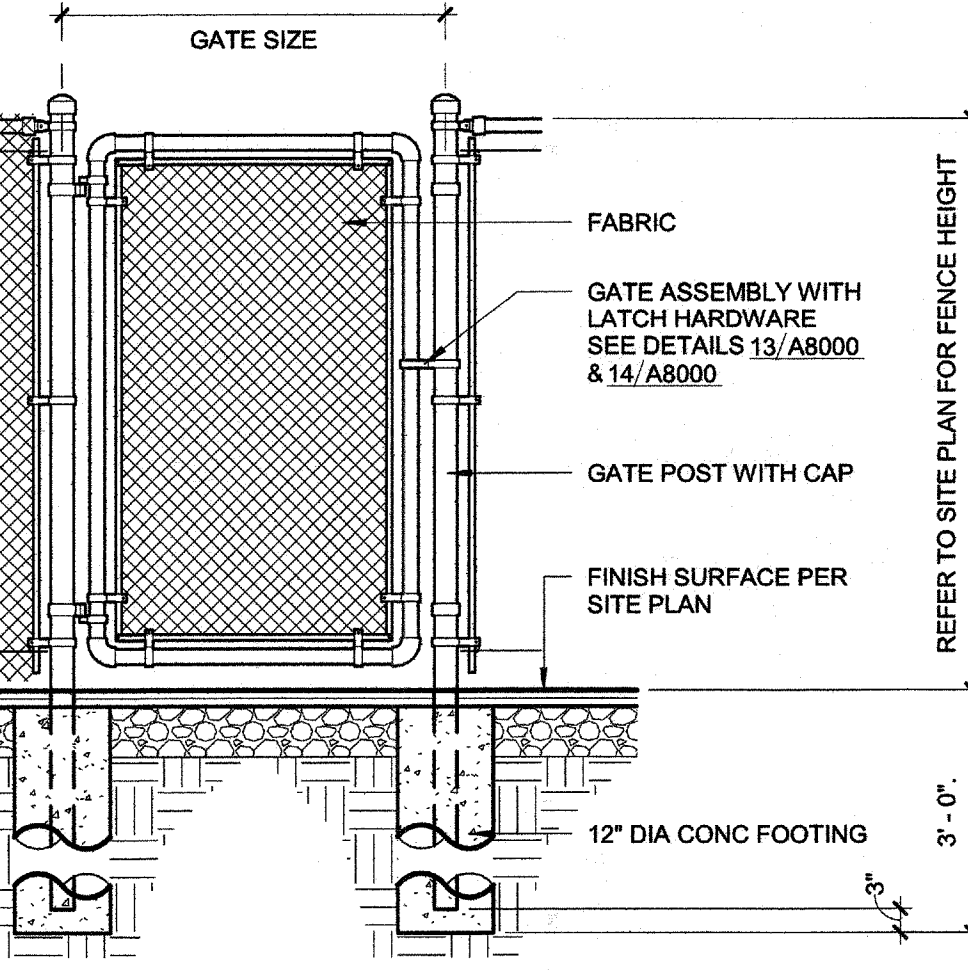
02 PANEL PLAN 1 1/2" = 1'-0"



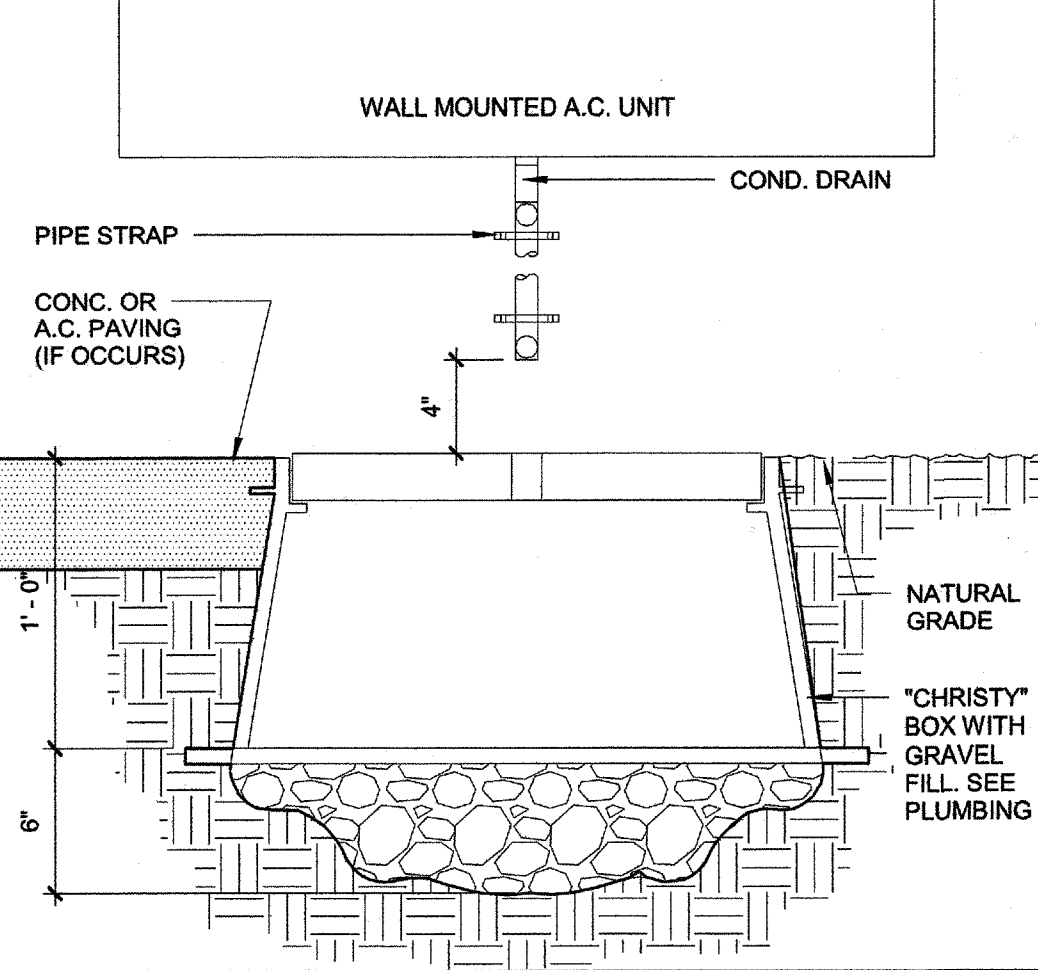
17 WALK @ AC PAVING 1 1/2" = 1'-0"



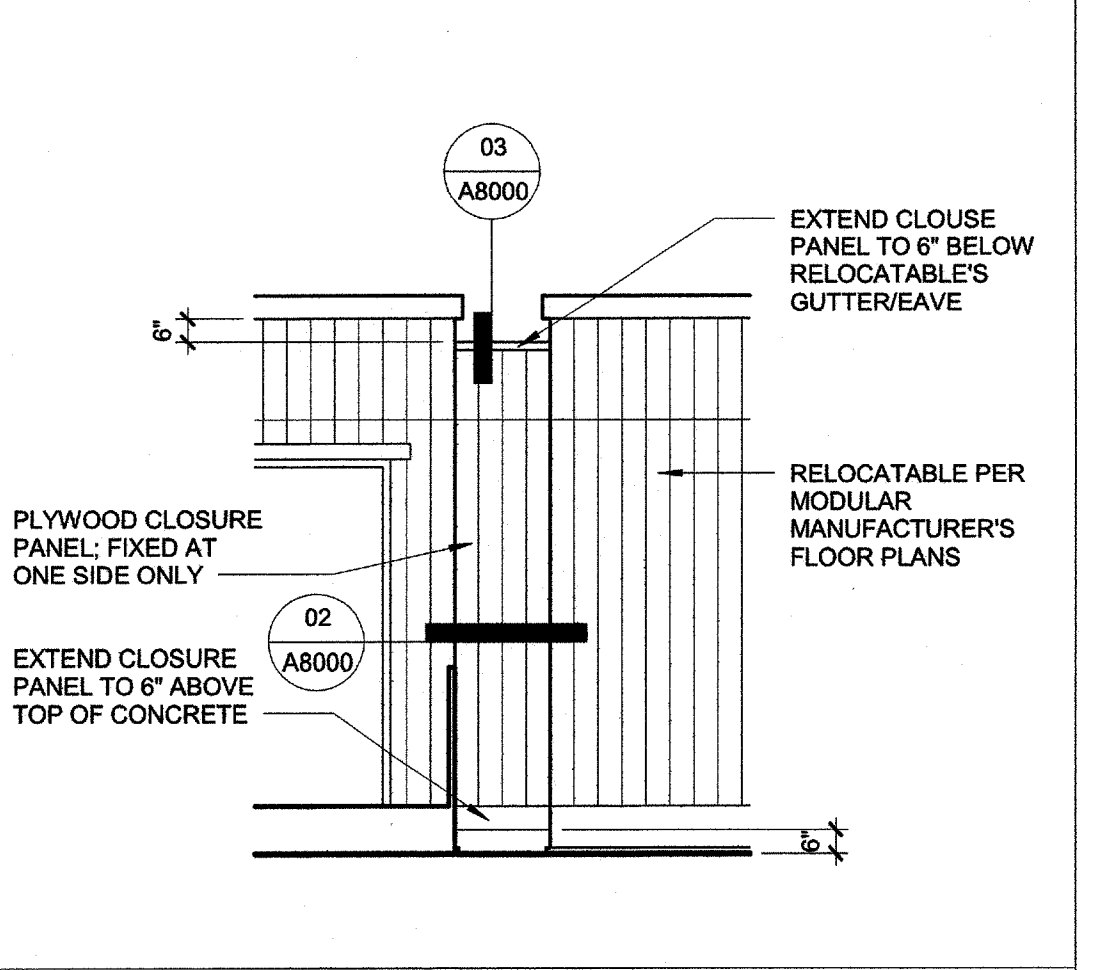
13 ACC. GATE LATCH 3" = 1'-0"



09 CHAIN LINK GATE 1/2" = 1'-0"



05 DRYWELL 1 1/2" = 1'-0"



01 CLOSURE PANEL 1/4" = 1'-0"

PRIME CONSULTANT

IBI ARCHITECTURE PLANNING
San Luis Obispo
4119 Broad Street, Suite 210
San Luis Obispo, CA 93401
805.546.0433 fax: 805.546.0504

SEAL

LICENSED ARCHITECT
RICHARD MENDOZA
No. C18079
REN. 10/17
STATE OF CALIFORNIA

COPYRIGHT: Any reproduction or distribution for any purpose other than authorized by IBI Group is forbidden.

COPYRIGHT 2017 IBI GROUP

REVISIONS

NO.	DATE	APPRD.	DESCRIPTION

AGENCY INFORMATION:

AGENCY TRACKING NO. 63321-267
FILE NO. 15-6

IDENTIFICATION STAMP
DIV. OF THE STATE ARCHITECT
OFFICE OF REGULATION SERVICES
03118235
AC MP FL S
DATE JUL 11 2017

BAKERSFIELD CITY SCHOOL DISTRICT

CHIPMAN JR. HIGH,
RELOCATABLES R13 & R14
2905 EISSLER ST. BAKERSFIELD, CA 93306

OPSC or OSHPD PROJ. NO:
PROJECT NO: 17150/109623
DRAWN BY: rR
CHKD BY: RM
ISSUE DATE: 07/11/2017
SHEET TITLE

DETAILS

SHEET NUMBER

A8000

CONSTRUCTION DOCUMENTS

PLOT DATE: 7/10/2017 11:18:33 AM J:\17150_BCG_ChipmanRelocables.Dwg\pds\Architecture\ATW-17150-CHIPMAN\REL-OS-A-2016.rvt