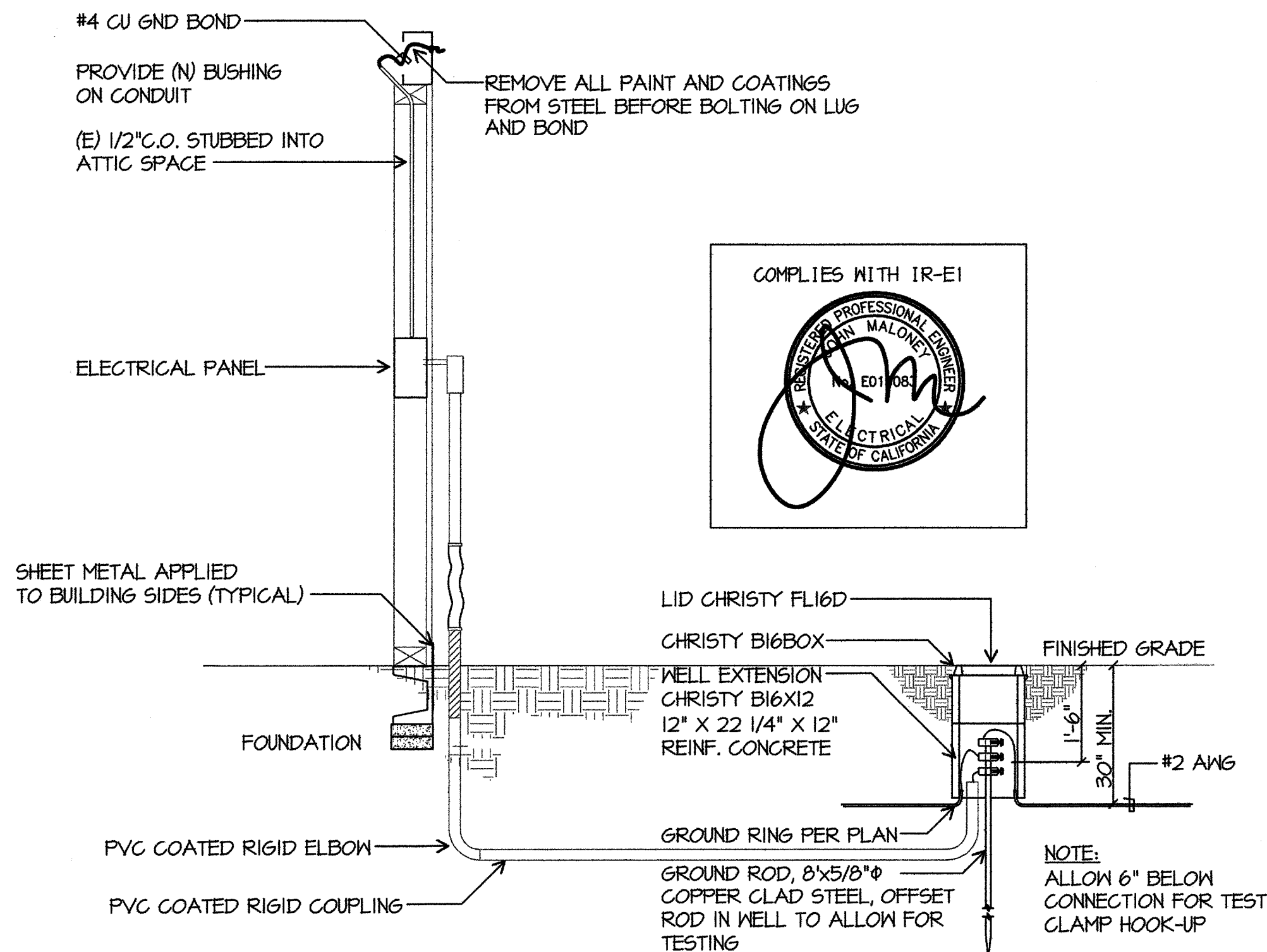
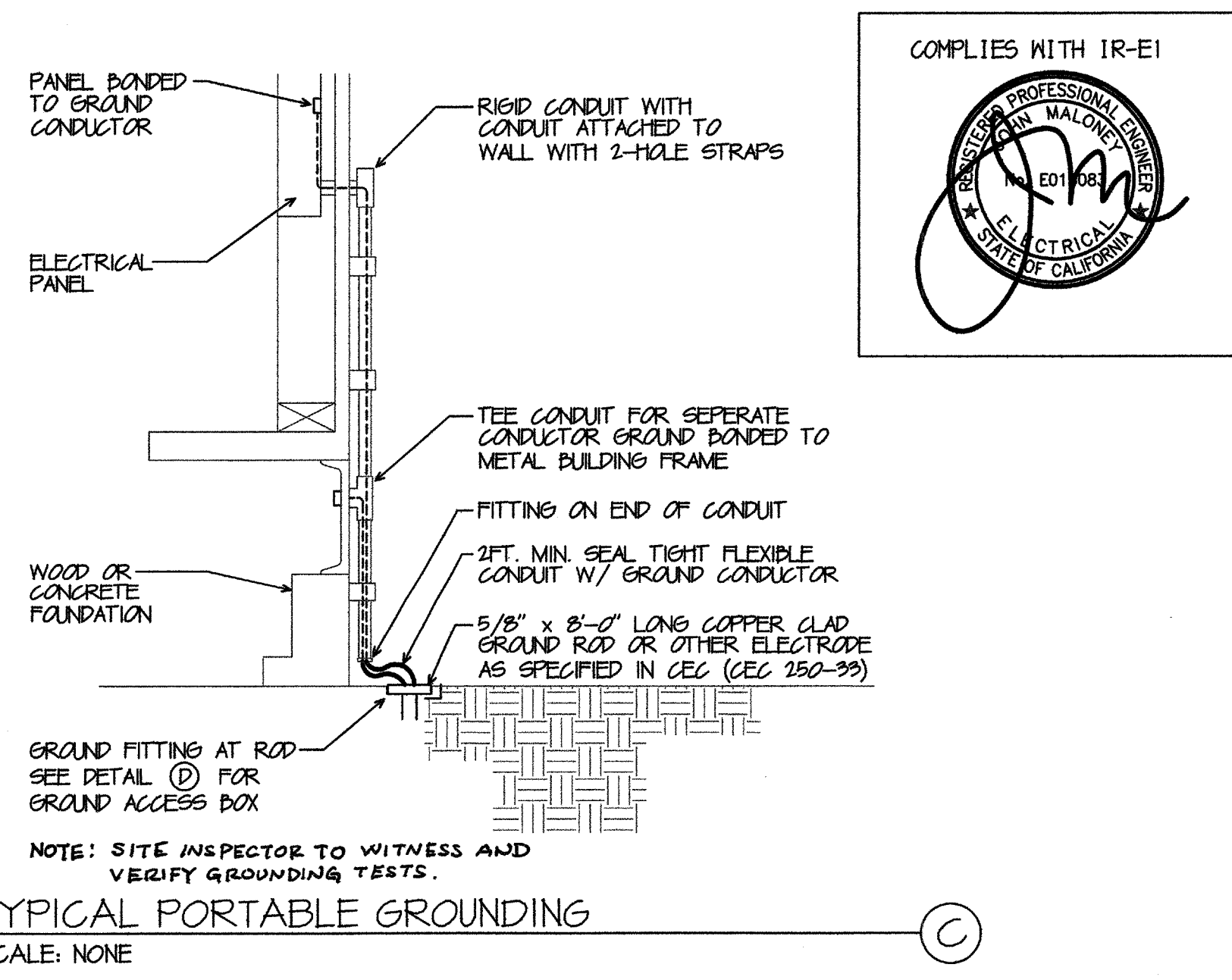


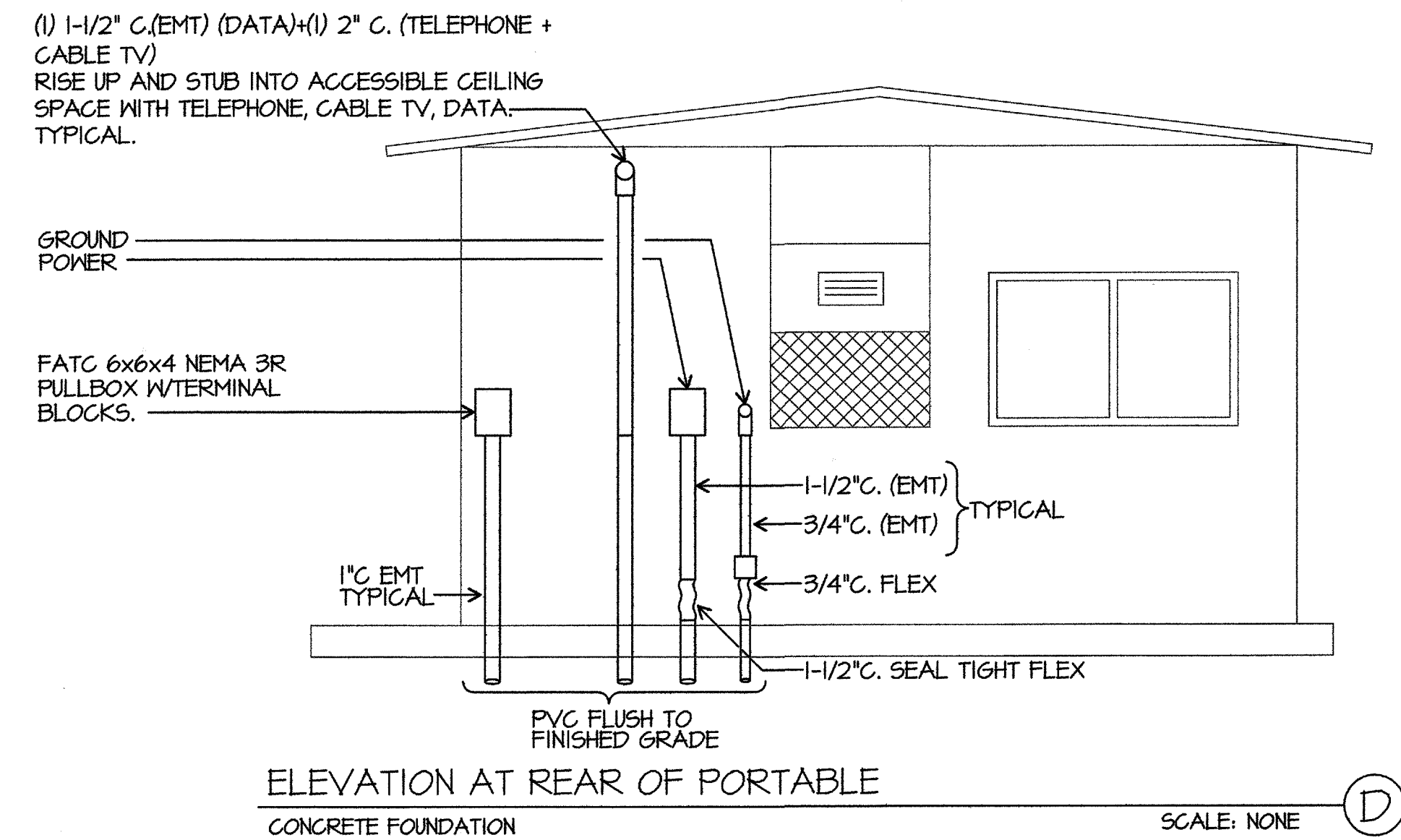
GROUND ACCESS BOX
SCALE: NONE



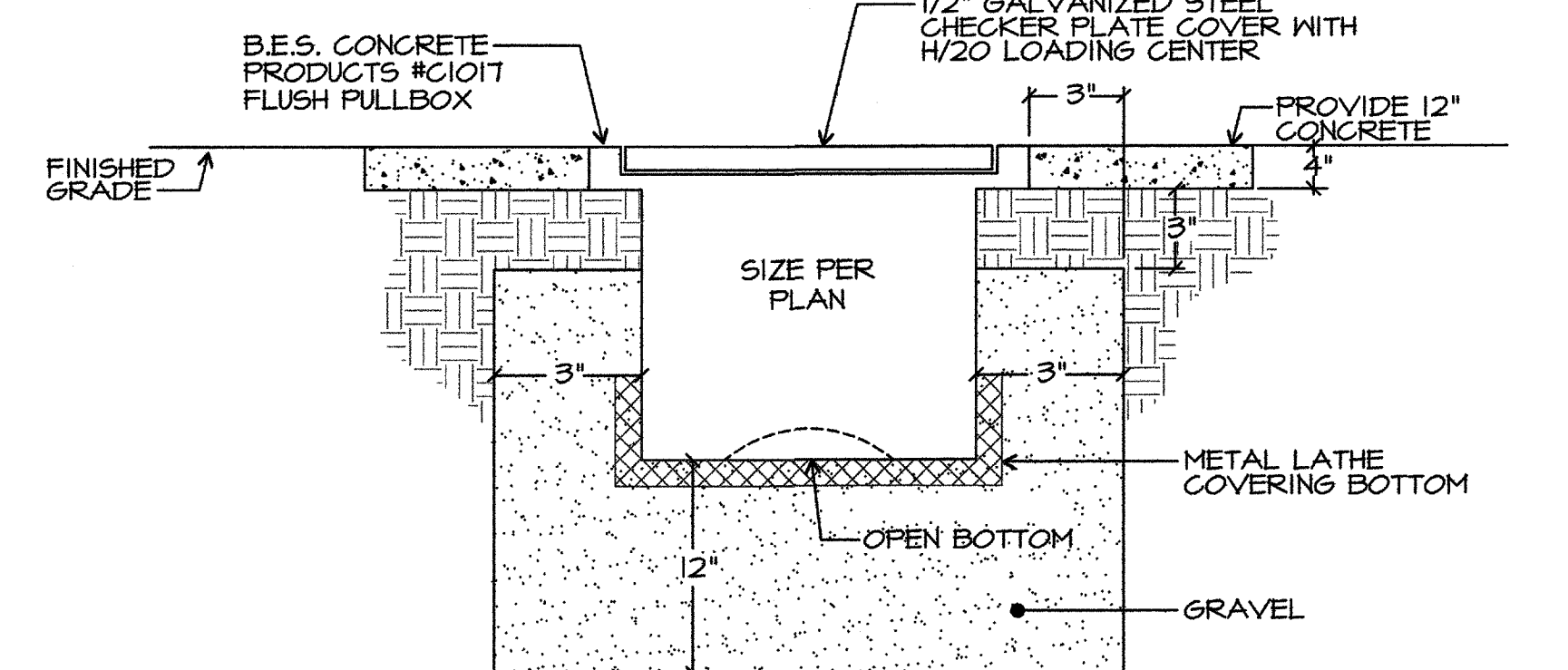
TYPICAL TRAILER STEEL FRAME BONDING/GROUNDING DETAIL
SCALE: NONE



TYPICAL PORTABLE GROUNDING
SCALE: NONE

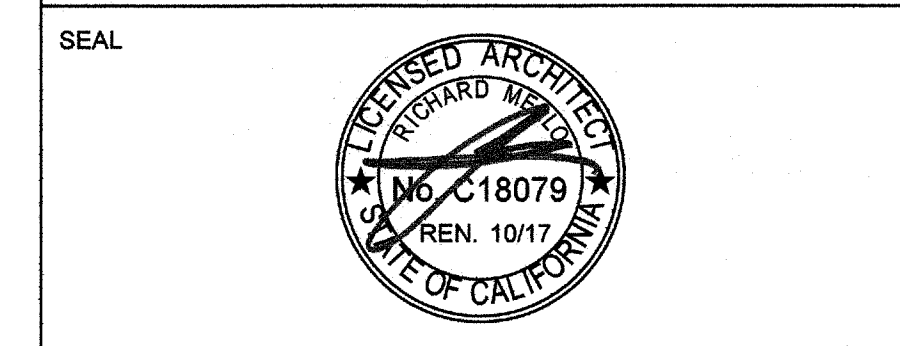


ELEVATION AT REAR OF PORTABLE
SCALE: NONE



FLUSH PULLBOX DETAIL
SCALE: NONE

PRIME CONSULTANT
IBI ARCHITECTURE PLANNING
San Luis Obispo
4115 Broad Street, Suite B-6
San Luis Obispo, CA 93401
805.546.0433 fax:805.546.0504



COPYRIGHT:
Any reproduction or distribution for any purpose other than authorized by IBI Group is forbidden.
COPYRIGHT 2017 IBI GROUP

REVISIONS			
NO.	DATE	APPRD.	DESCRIPTION

CONSULTANT
JMPE
ELECTRICAL ENGINEERING
LIGHTING DESIGN
CA REGISTRATION NO. E19085
17148
5500 MING AVENUE,
SUITE 951
BAKERSFIELD, CA 93309
(805) 851-7051
FAX (805) 851-7813
www.jmpe.net

AGENCY INFORMATION:
AGENCY TRACKING NO. 63321-267
FILE NO. 15-6
IDENTIFICATION STAMP
DIV. OF THE STATE ARCHITECT
OFFICE OF REGULATION SERVICES
0318235
AC FLS/CH/ISS
DATE JUL 11 2017

BAKERSFIELD CITY SCHOOL DISTRICT

CHIPMAN JR. HIGH,
RELOCATABLES R13 & R14
2905 EISSLER ST. BAKERSFIELD, CA 93306

OPSC or OSHPD PROJ. NO.	
PROJECT NO.	17150/109623
DRAWN BY:	AC
CHK'D BY:	KT
ISSUE DATE:	07/11/2017

SHEET TITLE
DETAILS

SHEET NUMBER
E-0.1

\\pdris01\shares\dwg\2017\DWG\17148\17148-0-1.dwg, 5/30/2017 1:06:40 P.M., attonso