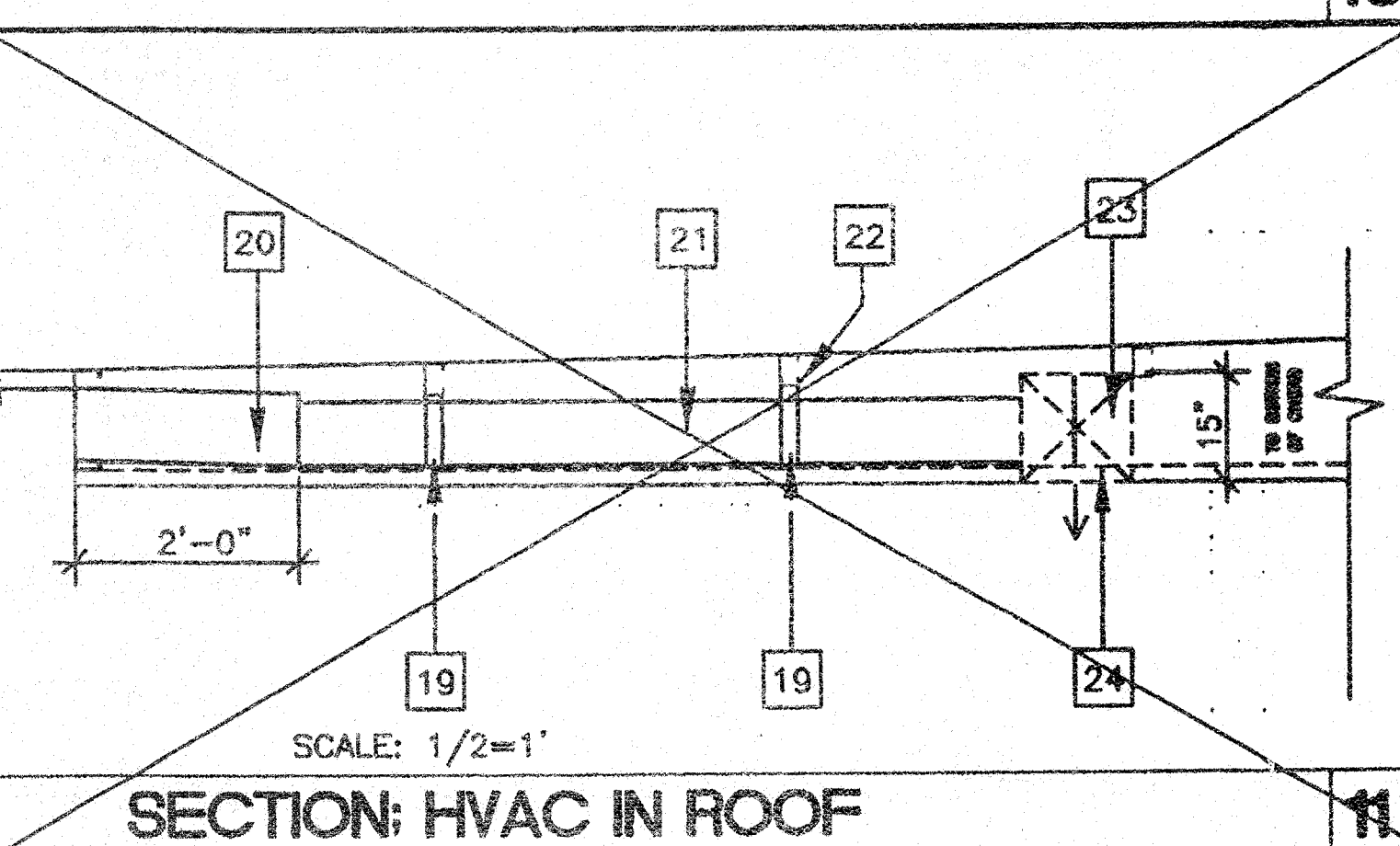
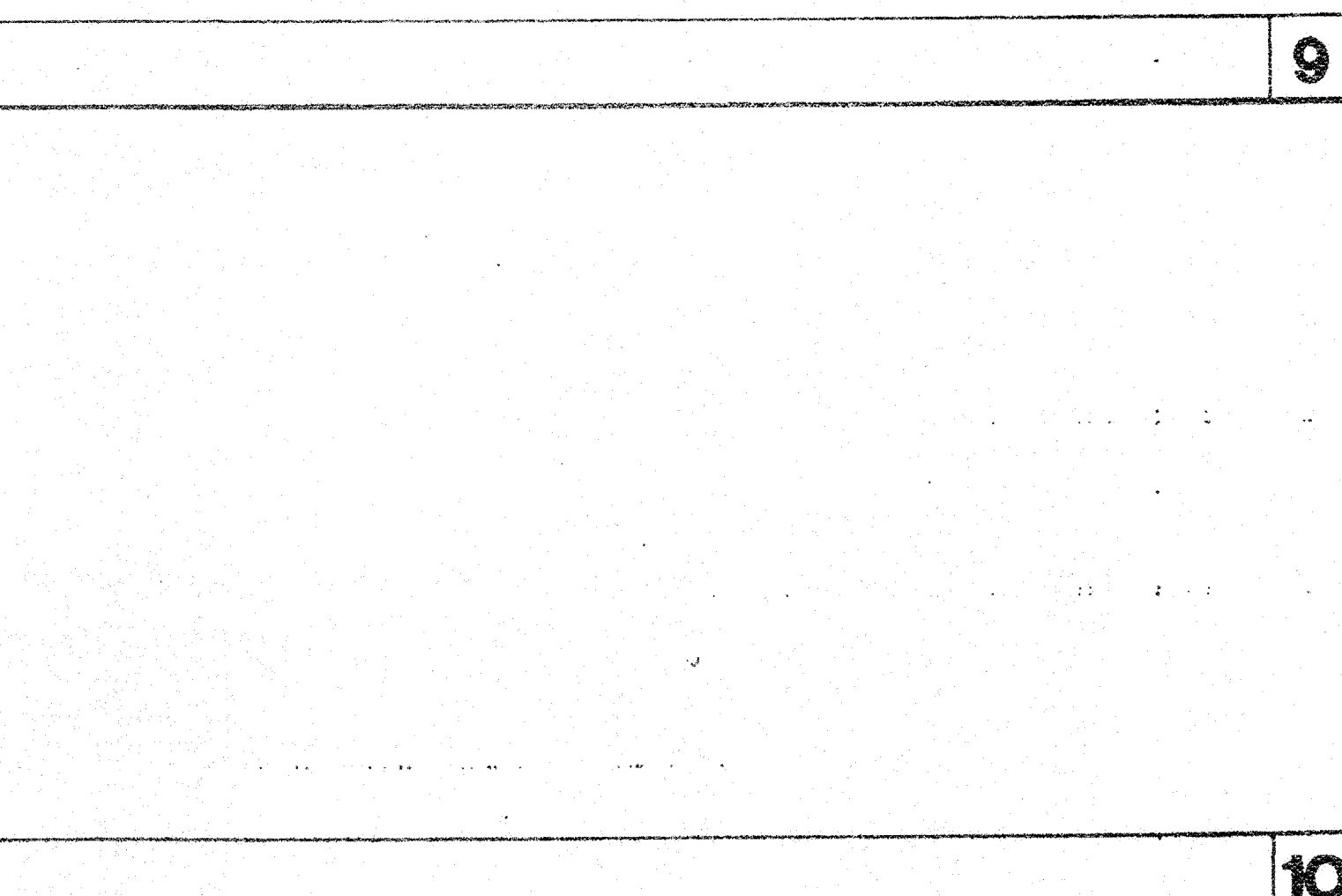
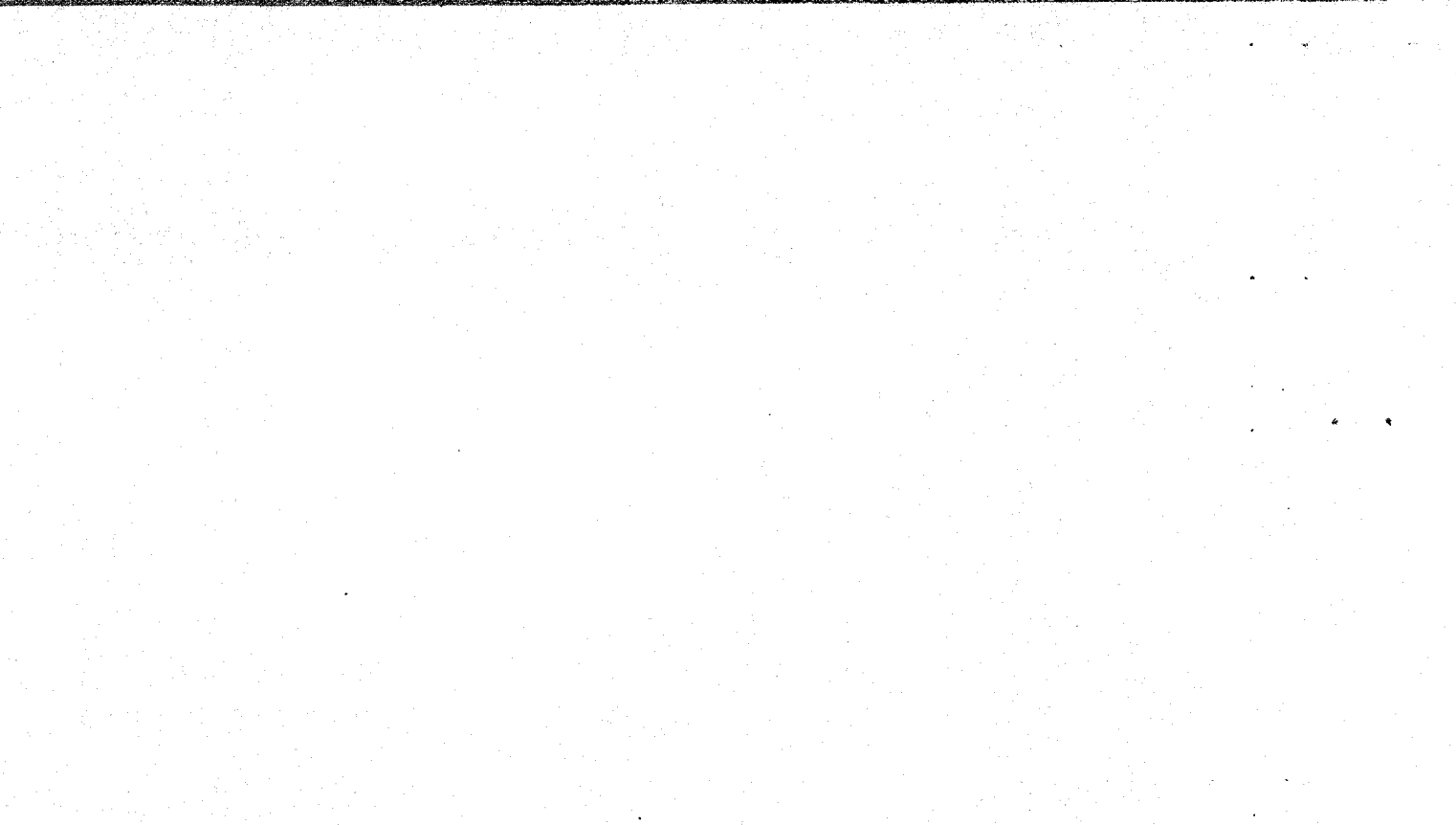


NAILING SCHEDULE	
CONNECTION	NAILING
1. JOIST TO SILL OR GIRDER, TOENAIL	2-10d
2. BRACES TO JOIST, TOENAIL END END	2-8d
3. 1" X 6" (25 mm X 152mm) SUBFLOOR OR LESS TO EACH JOIST, FACE NAIL	2-78d
4. WIDER THAN 1" X 6" (25 mm X 152 mm) SUBFLOOR TO EACH JOIST, FACE NAIL	3-8d
5. 2" (51mm) SUBFLOOR TO JOIST OR GIRDER, BLIND AND FACE NAIL	2-18d
6. SOLE PLATE TO JOIST OR BLOCKING, TYPICAL FACE NAIL	16d at 16" (406mm) o.c.
SOLE PLATE TO JOIST OR BLOCKING, AT BRACED WALL PANELS	3-16d per 16" (406mm)
7. TOP PLATE TO STUD, END NAIL	2-18d
8. STUD TO SOLE PLATE	4-8d, toenail or 2-16d, end nail
9. DOUBLE STUDS, FACE NAIL	18d at 24" (610mm) o.c.
10. DOUBLE TOP PLATES, TYPICAL FACE NAIL	16d at 16" (406mm) o.c.
DOUBLE TOP PLATES, LAP SPICE	8-16d
11. BLOCKING BETWEEN JOISTS OR RAFTERS TO TOP PLATE, TOENAIL	3-8d
12. RUN JOIST TO TOP PLATE, TOENAIL	8d at 6" (152mm) o.c.
13. TOP PLATES, LAP AND INTERSECTIONS, FACE NAIL	2-16d
14. CONTINUOUS HEADER, TWO PIECES, 16d at 16" (406mm) o.c. along each edge	
15. CEILING JOIST TO PLATE, TOENAIL	3-8d
16. CONTINUOUS HEADER TO STUD, TOENAIL	4-8d
17. CEILING JOISTS, LAP OVER PARTITIONS, FACE NAIL	3-18d
18. CEILING JOIST TO PARALLEL RAFTERS, FACE NAIL	3-18d
19. RAFTER TO PLATE, TOENAIL	3-8d
20. 1" (25 mm) BRACE TO EACH STUD AND PLATE, FACE NAIL	2-8d
21. 1" X 8" (25 mm X 203 mm) SHEATHING OR LESS TO EACH BEARING, FACE NAIL	2-8d
22. WIDER THAN 1" X 8" (25 mm X 203mm) SHEATHING TO EACH BEARING, FACE NAIL	3-8d
23. BUILT-UP CORNER STUDS	16d at 24" (610mm) o.c.
24. BUILT-UP GIRDER AND BEAMS, 20d AT 32" (813 mm) O.C. AT TOP AND BOTTOM AND SPACED 2-20d AT ENDS AND AT EACH SPLICE.	
25. 2" (51mm) PLANKS	
26. WOOD STRUCTURAL PANELS AND PARTICLEBOARD: SUBFLOOR, ROOF AND WALL SHEATHING (TO FRAMING): (1 INCH=25.4mm)	
1/2" AND LESS	8d5
19/32" - 3/4"	8d4 OR 8d5
7/8" - 1"	8d3
1 1/8" - 1 1/4"	10d OR 8d5
COMMON ROOF UNDERLAYMENT (TO FRAMING): (1 INCH=25.4mm)	
3/4" AND LESS	8d5
7/8" - 1"	8d5
1 1/8" - 1 1/4"	10d4 OR 8d5
27. PANEL SIDING (TO FRAMING):	
1/2" (13 mm) OR LESS	8d6
5/8" (16 mm)	8d9
28. FIBERBOARD SHEATHING	
1/2" (13 mm)	NO. 11 GA. 8d6
	NO. 18 GA. 8d4
28/32" (30 mm)	NO. 11 GA. 8d4
	NO. 18 GA. 8d4
29. INTER PANELING	
1/4" (6.4 mm)	4d 10
3/8" (9.5 mm)	6d 11

NOTE: All nail shall be box nails unless otherwise noted.

- COMMON OR BOX NAILS MAY BE USED EXCEPT WHERE OTHERWISE STATED.
- NAILS SPACED AT 6" (152MM) ON CENTER AT EDGES, 12" (305MM) AT INTERMEDIATE SUPPORTS EXCEPT 6 INCHES (152MM) AT ALL SUPPORTS WHERE SPANS ARE 48" (1219MM) OR MORE. FOR NAILING OF WOOD STRUCTURAL PANEL AND PARTICLE DIAPHRAGMS AND SHEAR WALLS, REFER TO SECTION 2314.3. NAILS FOR WALL SHEATHING MAY BE COMMON, BOX OR CASING.
- COMMON OR DEFORMED SHANK
- COMMON
- DEFORMED SHANK
- CORROSION-RESISTANT SIDING OR CASING NAILS CONFORMING TO THE REQUIREMENTS OF SECTION 2325.1.
- FASTENERS SPACED 3 INCHES (76MM) ON CENTER AT EXTERIOR EDGES AND 6 INCHES (152MM) ON CENTER AT INTERMEDIATE SUPPORTS.
- CORROSION-RESISTANT ROOFING NAILS W/7/16(11MM) HEAD AND 1 1/2 INCH(38MM) LENGTH FOR 1/2 INCH(13MM) SHEATHING AND 1 3/4 INCH(44MM) LENGTH FOR 25/32 INCH(20MM) SHEATHING CONFORMING TO THE REQUIREMENTS OF SECTION 2325.1.
- CORROSION-RESISTANT STAPLES WITH NOMINAL 7/16 INCH(11MM) CROWN AND 1 1/8 INCH(29MM) LENGTH FOR 1/2 INCH(13MM) SHEATHING AND 1 1/2 INCH(38MM) LENGTH FOR 25/32 INCH(20MM) SHEATHING CONFORMING TO THE REQUIREMENTS OF SECTION 2325.1.
- PANEL SUPPORTS AT 16 INCHES(406MM) 120 INCHES(3048MM) IF STRENGTH AXIS IS IN THE LONG DIRECTION OF PANEL UNLESS OTHERWISE MARKED. CASING OR FINISH NAILS SPACED 6 INCHES(152MM) ON PANEL EDGES, 12 INCHES (305MM) AT INTERMEDIATE SUPPORTS.
- PANEL SUPPORTS AT 24 INCHES(610MM). CASING OR FINISH NAILS SPACED 6 INCHES(152MM) ON PANEL EDGES, 12 INCHES(305MM) AT INTERMEDIATE SUPPORTS.
- NAIL DRIVEN INTO PRESSURE TREATED SILL PLATES SHOULD BE GALV.

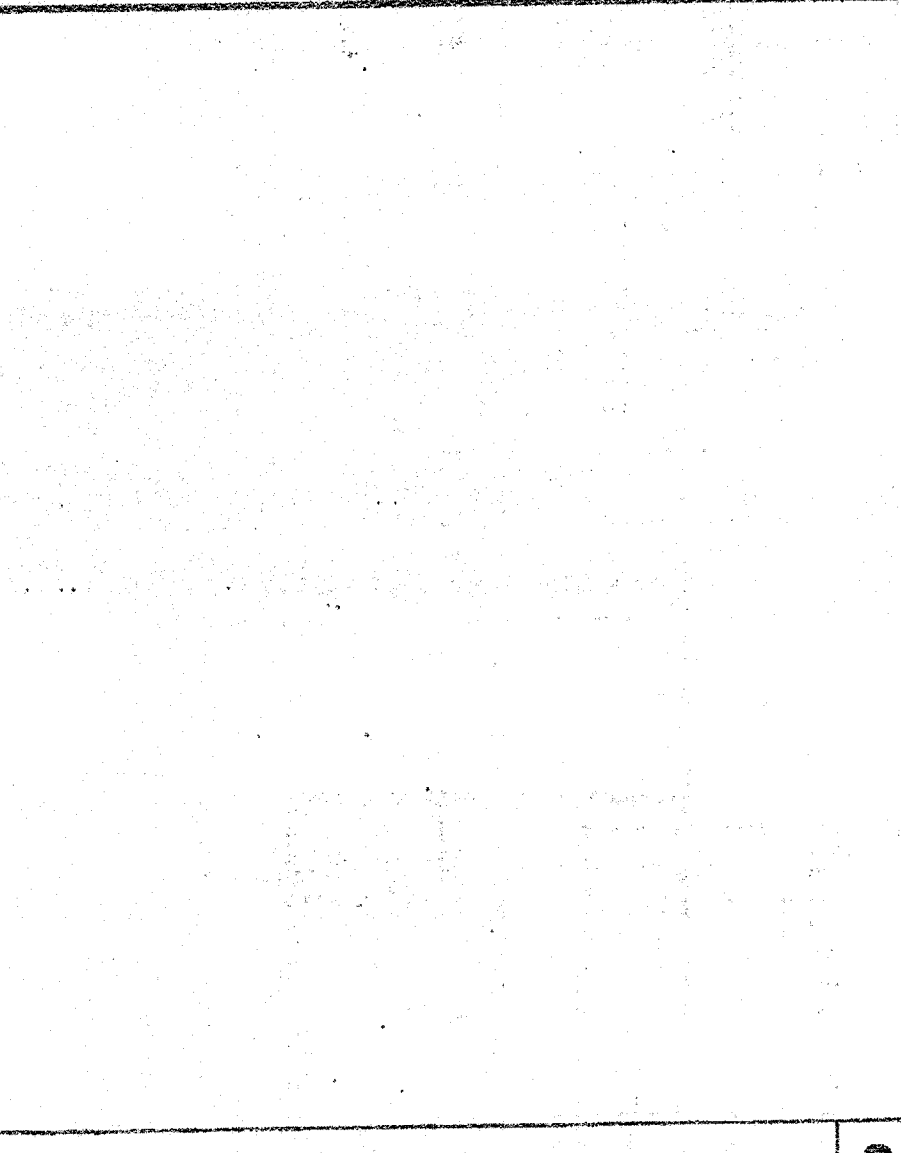
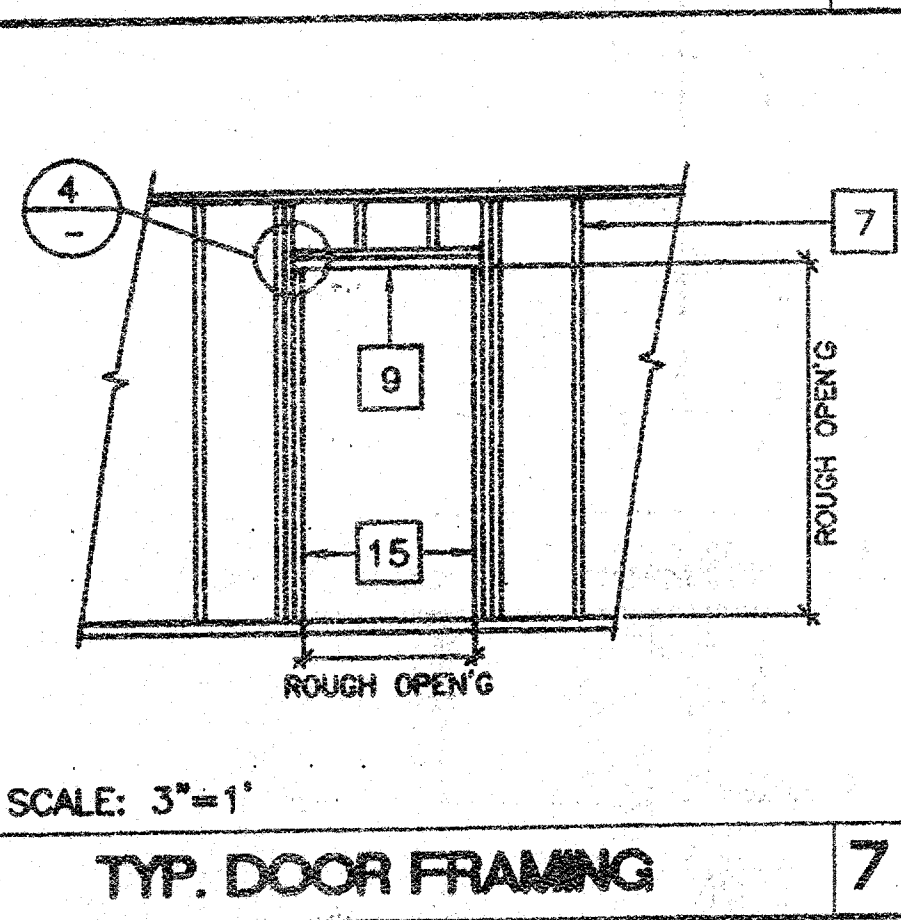
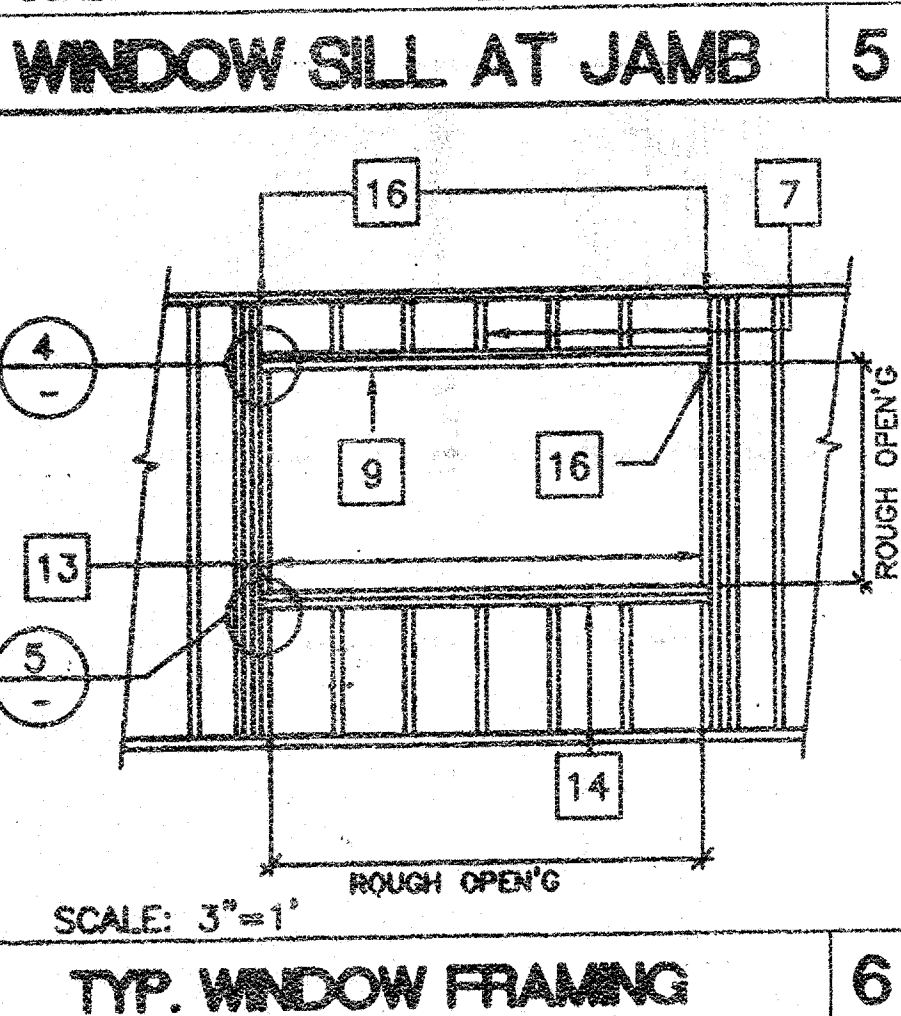
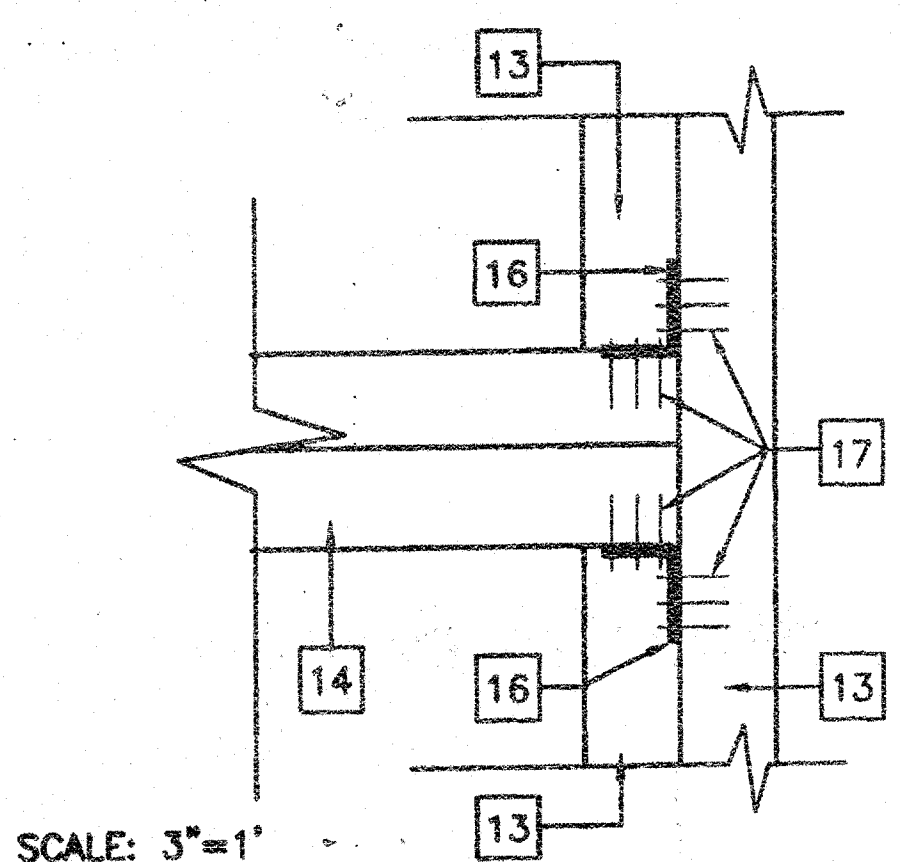


OPENING SCHEDULE		ROUGH OPENING	
OPENING	HDR. SILL JAMB	HEIGHT	WIDTH
3068	(2) 2X4 (2) 2X4 (2) 2X4 *	81 1/4"	38"
8040	(3) 2X4 (2) 2X4 (3) 2X4 *	48 1/8"	96 1/8"

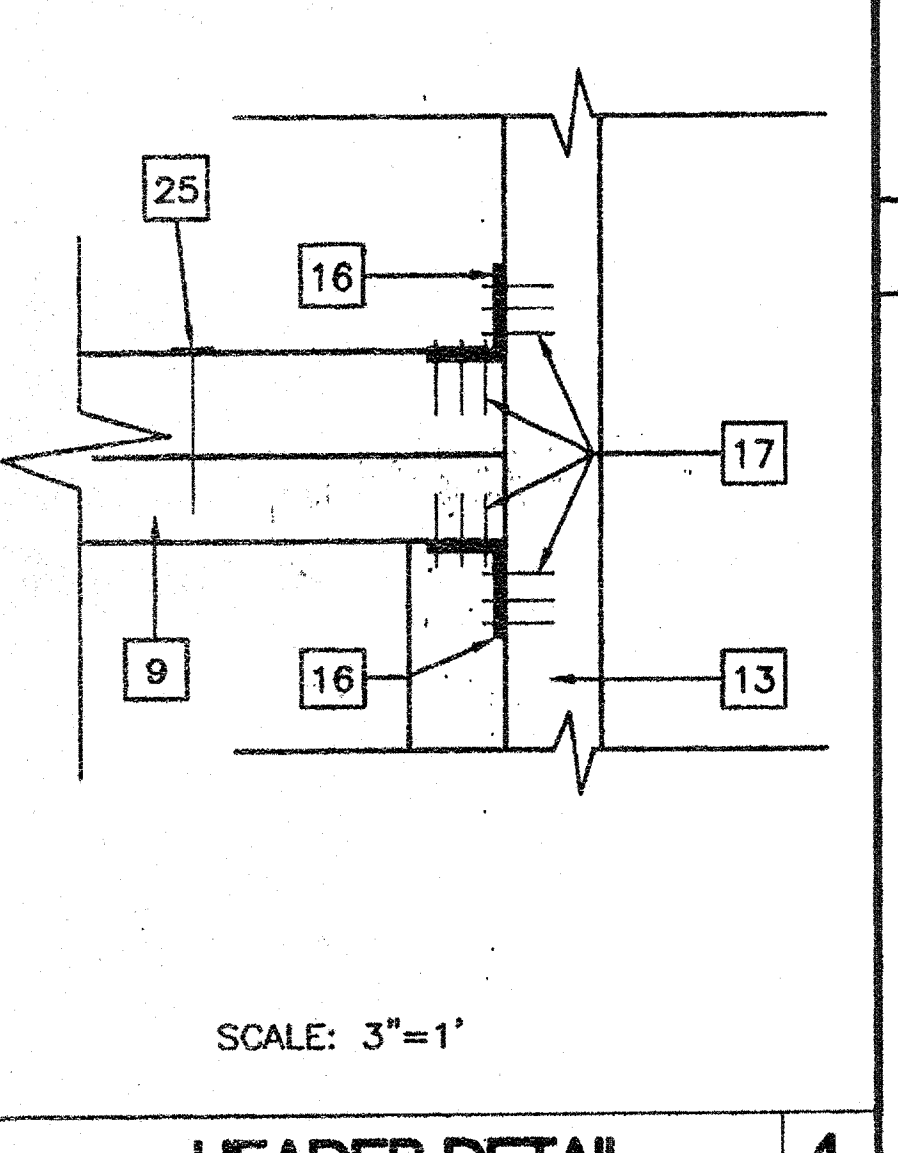
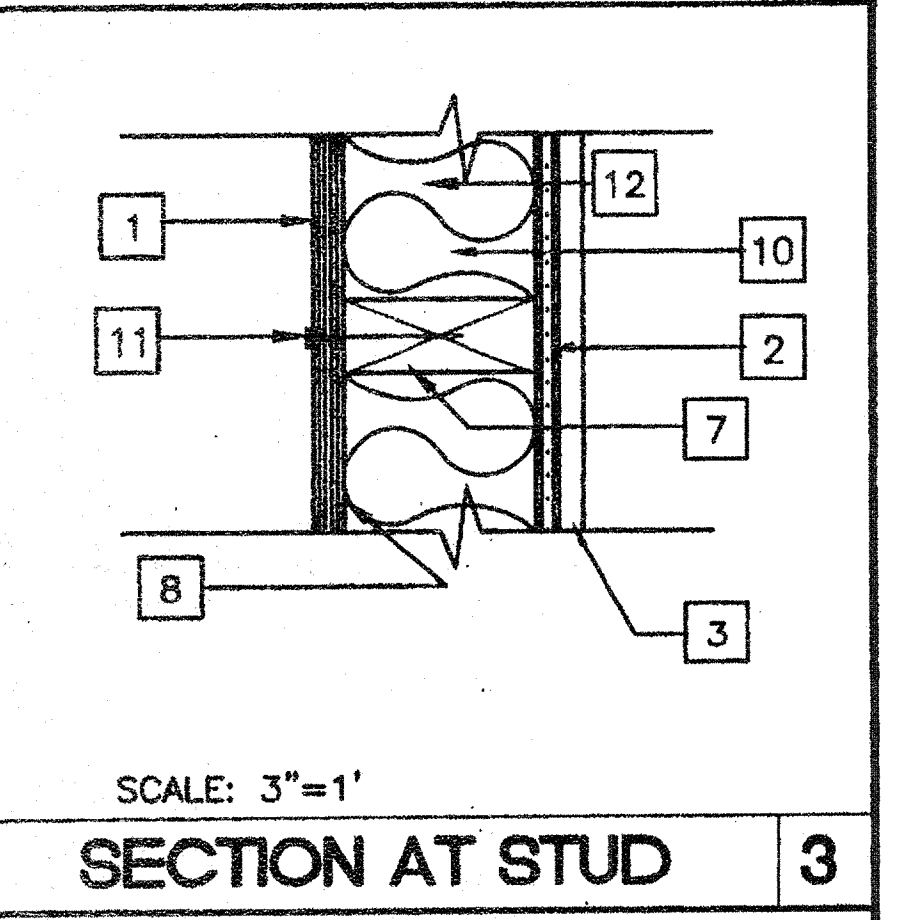
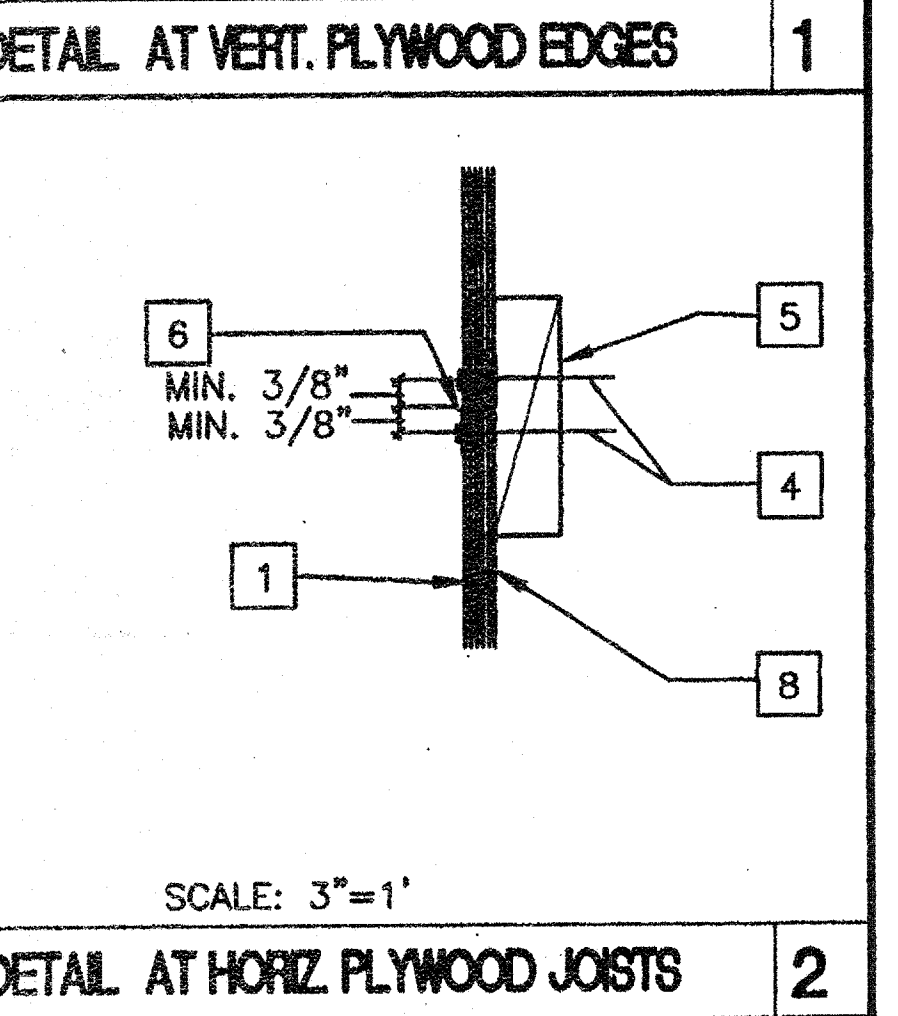
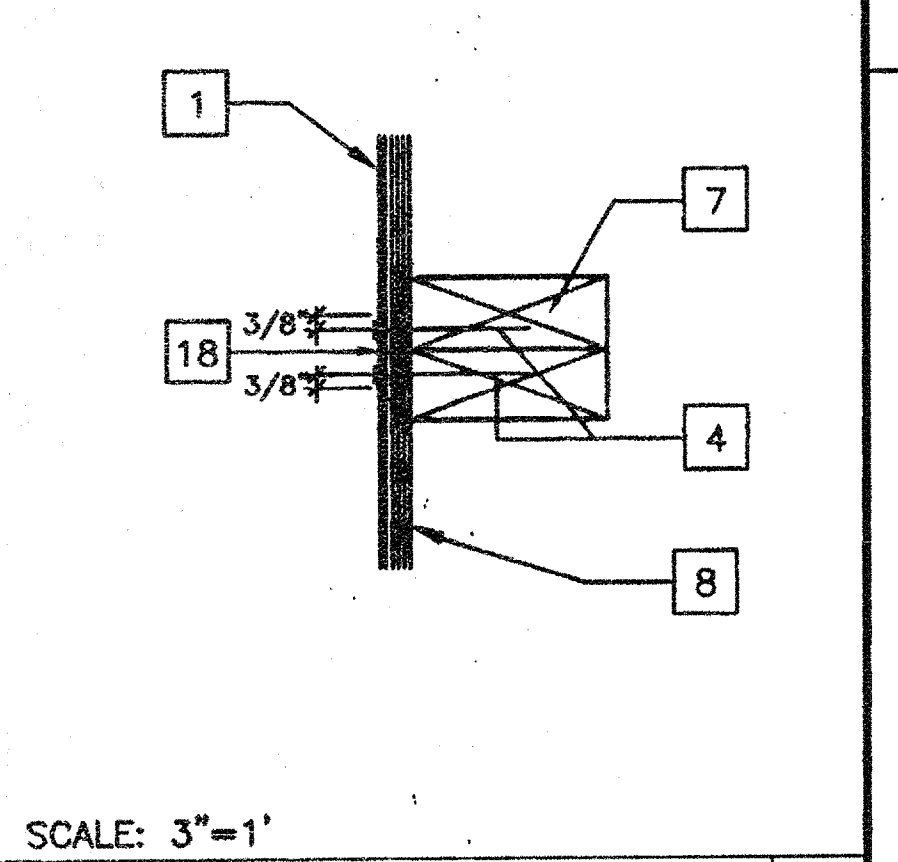
* FULL HEIGHT STUDS

ALTERNATE: METAL STUD 3 1/2" X 20 GA. IN LIEU OF 2X4 WD. STUDS

ROUGH OPENING SCHEDULE



HEADER DETAIL



HEADER DETAIL

- ### KEY NOTES
- EXTERIOR PLYWOOD SIDING - SHEATHING NAIL W/GALV. BOX NAILS - 8d AT 6" O.C. EDGES, 8d AT 12" O.C. IN FIELD
 - GYP. BOARD
 - TYP. INTERIOR FINISH-SEE FINISH SCHEDULE
 - E.N.
 - 2X4 BLK'G
 - "Z" FLASHING
 - 2X4 AT 16" O.C./DBL. 2X4 AT VERT. SIDING JOINT
 - WATERPROOF MEMBRANE
 - HEADER (SEE SCHEDULE S5.0)
 - INSULATION (SEE SPECIFICATIONS)
 - 8d ELECTRO GALV. 12" O.C.FN.
 - 2X4 SILL PLATE (BELOW)
 - FULL HEIGHT STUDS AND 1-2X4 TRIMMER (SEE OPENING SCHEDULE FOR JAMB STUDS REQ'D FOR DOORS & WINDOWS ONLY)
 - SILL PLATE (SEE SCHEDULE)
 - 2X4 FULL HEIGHT KING STUDS AND 2X4 TRIMMER (SEE SCHEDULE FOR QUANTITY)
 - A 34 CLIPS AT HEADER AND SILL TO FULL HEIGHT STUDS AND FULL HEIGHT STUDS TO TOP AND BOTTOM PLATES
 - 9GA. 8d 1 1/2" NAILS
 - LAP JOINT
 - 2" WIDE DUCT SUPPORT STRAP @ 48" O.C.
 - PLENUM
 - DUCTWORK
 - ROOF PURLIN
 - TRANSFER BOX
 - ROOF CHANNEL
 - 16D @ 16" O.C.

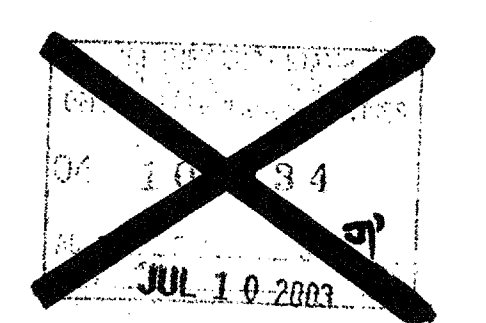
AGENCY TRACKING NO. 63321-154
FILE NO. 15-6

IDENTIFICATION STAMP
DIV. OF THE STATE ARCHITECT
OFFICE OF REGULATION SERVICES
03-117035
AC: FLS / SS: [Signature]
DATE: 01/28/2016

IDENTIFICATION STAMP
DIV. OF THE STATE ARCHITECT
OFFICE OF REGULATION SERVICES
04 105455
AC: FLS / SS: [Signature]
DATE: JUL 17 2003

NOTES

- NAILING:
-NAILING IN ACCORDANCE W/ T.24 C.A.C TABLE 2-25 P
-ALL NAILS EXPOSED TO WEATHER SHALL BE GALV.
-MACHINE APPLIED NAILING SHALL HAVE PRIOR DEMONSTRATION AND APPROVAL BY O.S.A. / DSA FIELD REP. AND THE ARCHITECT.



REVISIONS	Electrical Engineer's Seal	Mechanical Engineer's Seal	PC Professional of Record Seal	Architect's Seal

PC
CBC 2001
IDENTIFICATION STAMP
DIV. OF THE STATE ARCHITECT
OFFICE OF REGULATION SERVICES
PC-04
104796
AC: FLS / SS: [Signature]
DATE: 8/2/07

STATE OF CALIFORNIA
LICENSED ARCHITECT
12/31/03
RENEWAL DATE

MODTECH
2830 BARRETT AVENUE. FAX (909) 943-4014
PERRIS, CALIF. 92572 FAX (909) 940-0427

PROJECT NUMBER: 4736
WILLIAM SCOTTSMAN

FRAMING DETAILS

© MODTECH, INC. 2002
ALL RIGHTS RESERVED

DRAWN BY: GL
DATE: 07/07/03
CHECKED BY:
DATE:

MODTECH Index No.
S5.0

WOOD STUDS