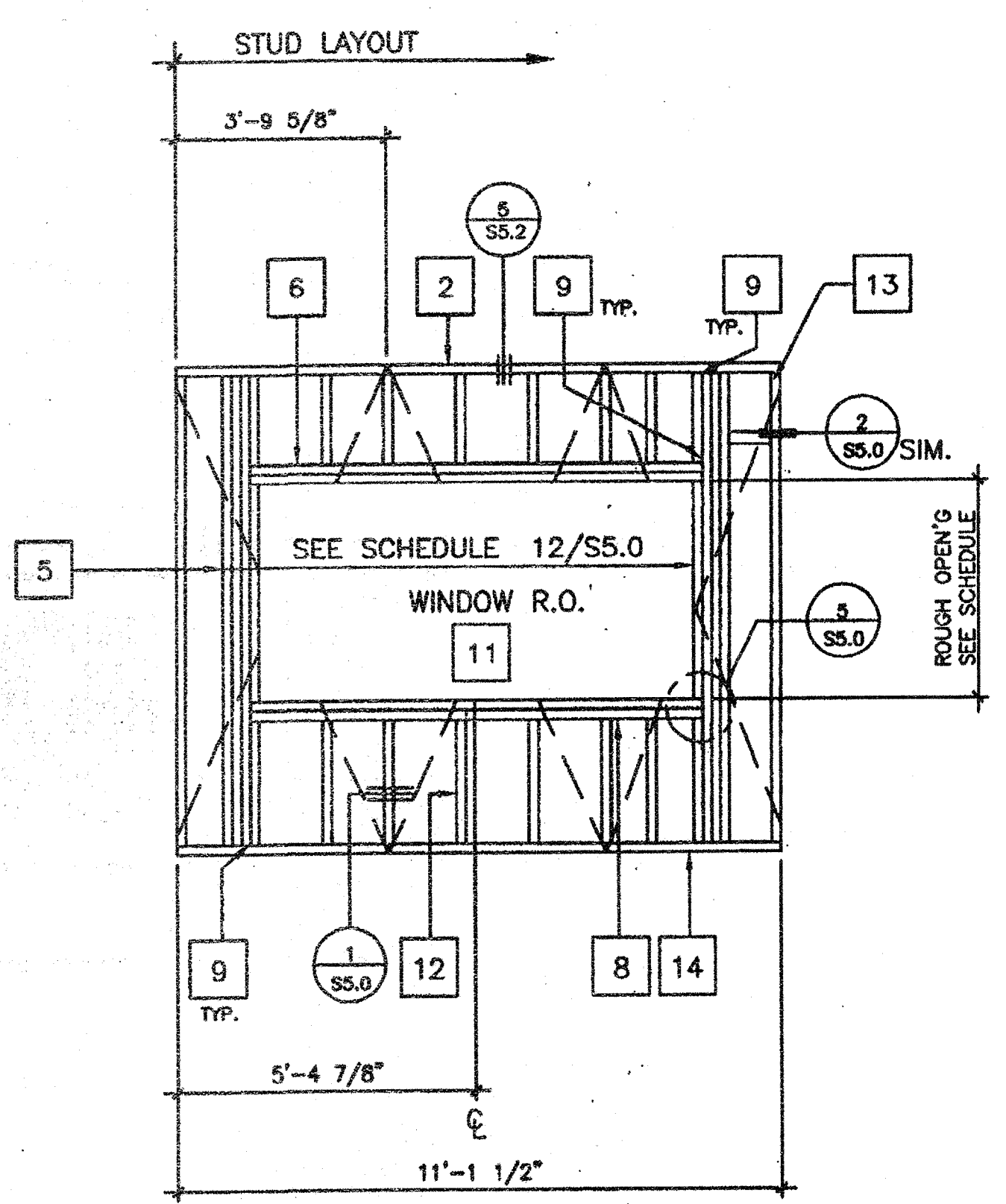
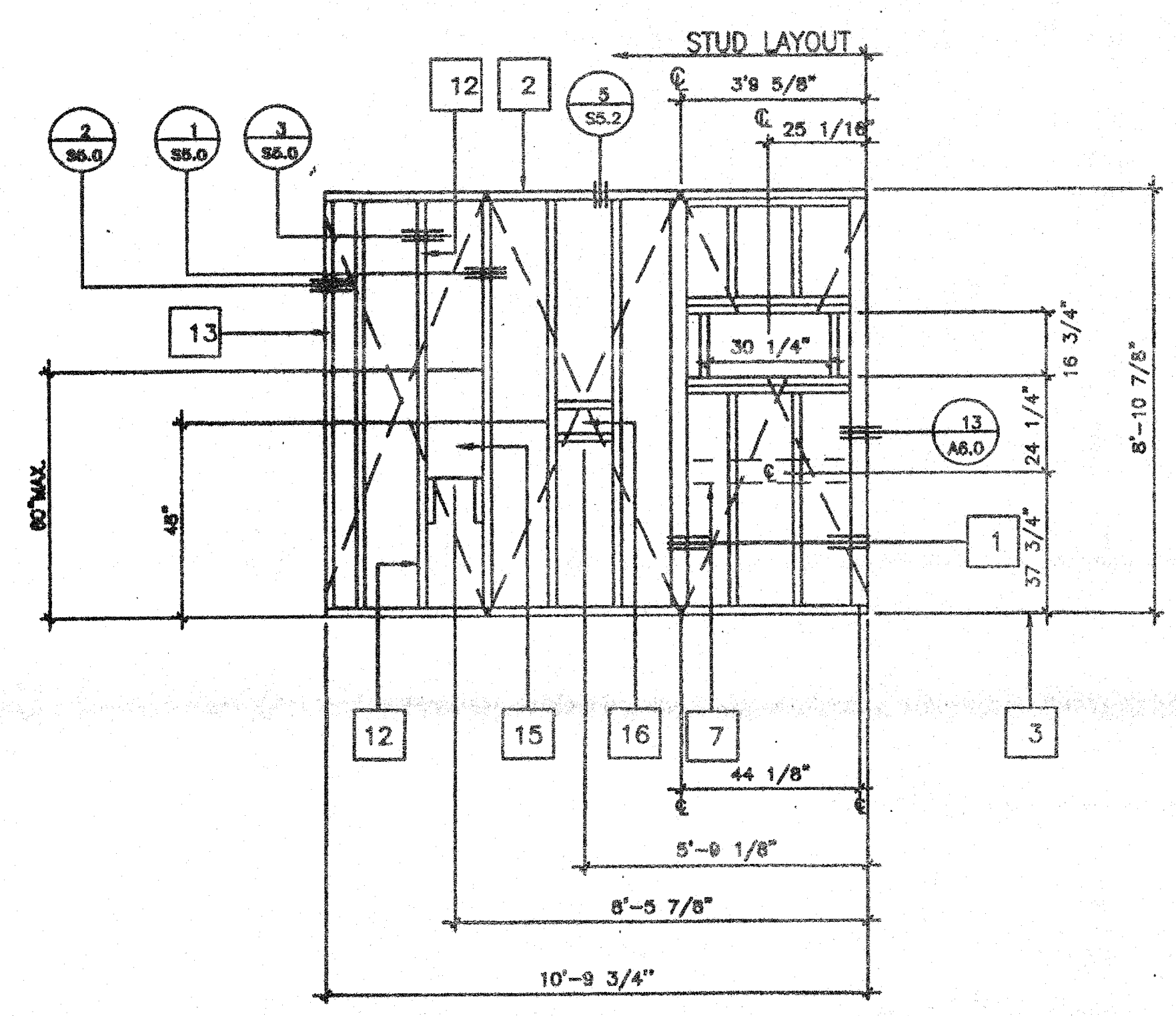


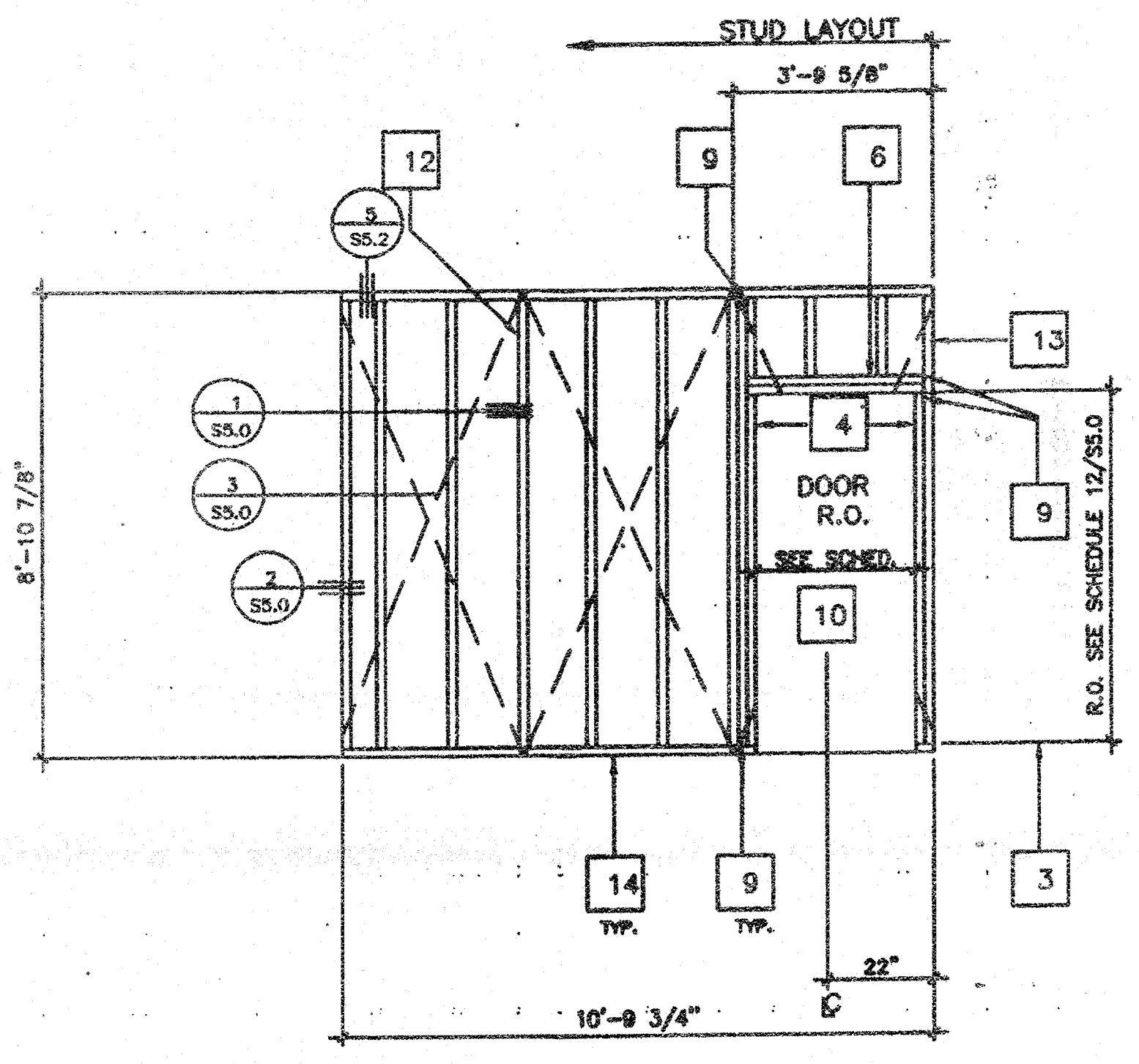
A



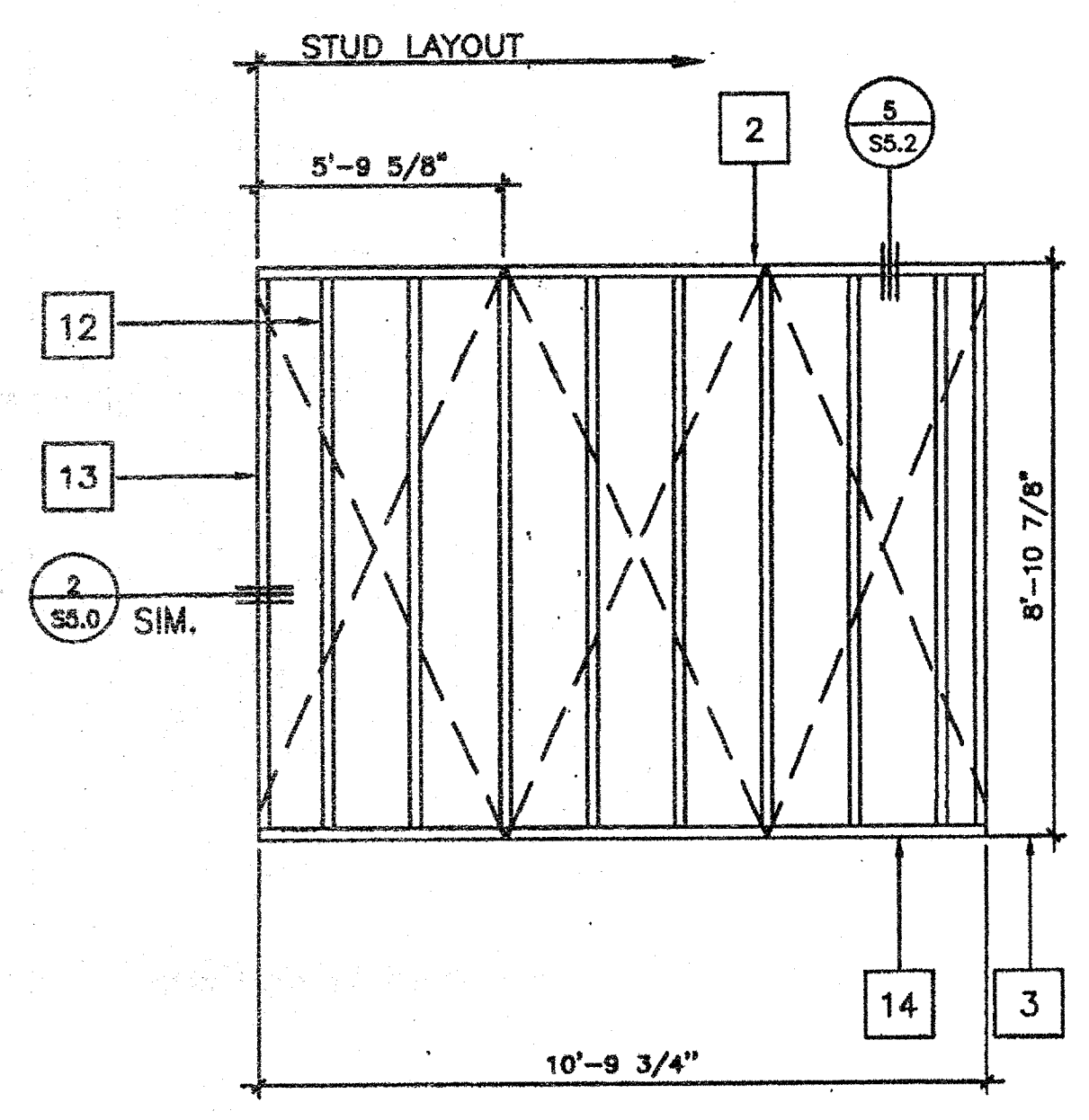
B



C



D



E

SCALE 3/8"=1'

- KEY NOTES**
- 1 4 X 4 POST ALT.;USE 2-2X4 W/FACE NAILING
 - 2 2X4 TOP PLATE
 - 3 FINISH FLOOR
 - 4 2X4 FULL HGT. KING STUDS AND 2X4 TRIMMER (SEE SCHEDULE FOR QUANTITY SHT S5.0)
 - 5 FULL HEIGHT STUDS AND 1-2X4 TRIMMER (SEE WINDOW SCHEDULE FOR JAMB STUDS REQUIRED. SHEET S5.0.
 - 6 HEADER (SEE SCHEDULE)
 - 7 2"x6" LET IN FOR AC SUPPORT
 - 8 WINDOW SILL PLATE (SEE SCHEDULE)
 - 9 A 34 CLIPS AT HEADER & SILL TO FULL HGT. STUDS AND FULL HGT. STUDS TO TOP AND BOTTOM PLATES.SEE 4/S5.0
 - 10 REQUIRED OPENING FOR A 3068 DOOR (SEE DETAIL 7/S5.0)
 - 11 REQUIRED OPENING FOR A 8040 WINDOW (SEE DETAIL 6/S5.0)
 - 12 2X4 STUD AT 16" O.C. TYPICAL
 - 13 2X4 NAILER TYPICAL AT EACH END
 - 14 2X4 SILL PLATE
 - 15 FRAME FOR ELECTRICAL PANEL
 - 16 THERMOSTAT LOCATION 4S BOX
 - 17 2"x4" BLOCKING AT EXTERIOR PLYWOOD SIDING JOINT

AGENCY TRACKING NO. 53321-154
 FILE NO. 15-6
 IDENTIFICATION STAMP
 DIV. OF THE STATE ARCHITECT
 OFFICE OF REGULATION SERVICES
 03-117035
 AC FLS SS
 DATE 6/28/2010

IDENTIFICATION STAMP
 DIV. OF THE STATE ARCHITECT
 OFFICE OF REGULATION SERVICES
 04 105455
 AC FLS SS
 DATE JUL 17 2003

~~IDENTIFICATION STAMP
 DIV. OF THE STATE ARCHITECT
 OFFICE OF REGULATION SERVICES
 04 105455
 AC FLS SS
 DATE JUL 10 2003~~

REVISIONS	DESCRIPTION	DATE

Electrical Engineer's Seal
 Mechanical Engineer's Seal
 PC Professional of Record Seal
 Architect's Seal

PC
 CBC 2001
 IDENTIFICATION STAMP
 DIV. OF THE STATE ARCHITECT
 OFFICE OF REGULATION SERVICES
 PC-04
 104796
 AC FLS SS
 DATE 5/2/07

MODTECH
 2830 BARRETT AVENUE FAX (909) 943-4014
 PERRIS, CALIF. 92572 FAX (909) 940-0427

PROJECT NUMBER: 4736
 WILLIAM SCOTTSMAN
WALL FRAMING

© MODTECH, INC. 2002
 ALL RIGHTS RESERVED
 WOOD STUDS

DRAWN BY: GL
 DATE: 07/07/03
 CHECKED BY:
 DATE:
 MODTECH Order No.
S4.0