

ELECTRICAL PANEL SCHEDULE

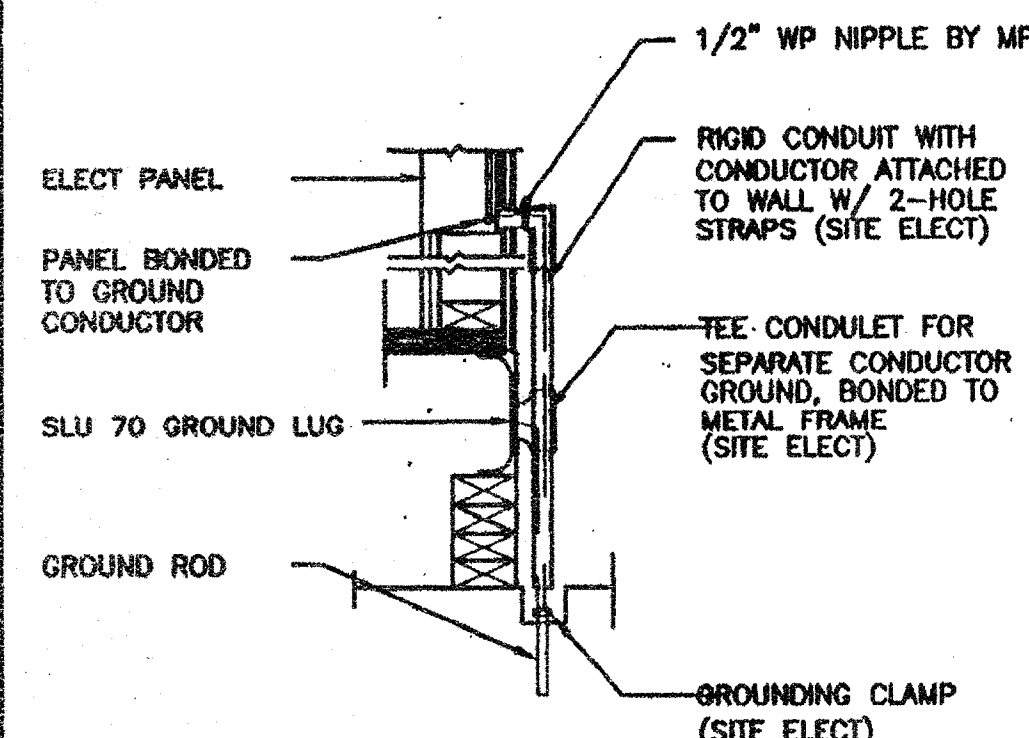
LOAD	WATTS		BREAKER		A		B		BREAKER		WATTS		LOAD	
	As	Bs	Amps	P	As	Bs	As	Bs	Amps	P	As	Bs		
RECEPTACLE	720		20	1	1		2	2	60		7080		HVAC (3 1/2T)	
RECEPTACLE/CLOCK		720	20	1	3		4	--	--		7080		HVAC (3 1/2T)	
INT/EXT LIGHTS	900		20	1	9		10							
INT. LIGHTS		840	20	1	11		12	--	--		40		FIRE ALARM (DEDICATED)	
WATTS/PHASE	A = 8700		1820	1560							7080	7120	B = 8680	WATTS/PHASE
TOTAL	17380		72		AMPS	120/240	VOLTS			SINGLE #			THREE	WIRE

GENERAL GROUNDING NOTES

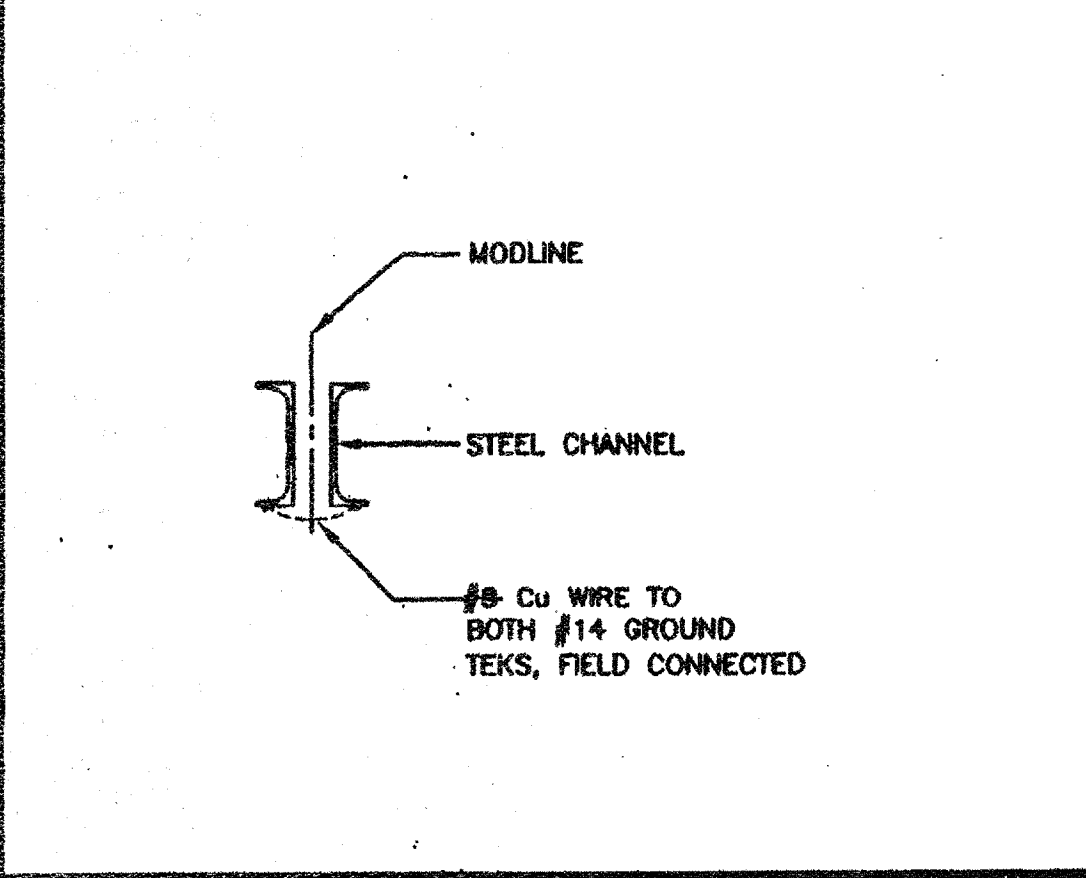
- EACH BUILDING SHALL BE SEPARATELY GROUNDED WITH A 3/4" RD. X 8' COPPERCLAD STEEL GROUND ROD. WHERE ROCK BOTTOM IS ENCOUNTERED, ROD SHALL BE DRIVEN AT AN ANGLE NOT TO EXCEED 45 DEGREE'S FROM THE VERTICAL OR SHALL BE BURIED IN A TRENCH THAT IS AT LEAST 30" DEEP (BY SITE ELECTRICAL).
- TESTING: TEST FOR RESISTANCE TO GROUND. IF RESISTANCE EXCEEDS 25 OHMS, INSTALL ADDITIONAL GROUND RODS SEPARATED AT LEAST 6'-0" UNTIL RESISTANCE IS REDUCED TO 25 OHMS OR LESS. (BY SITE ELECTRICAL)
- APPROVAL OF THIS PLAN DOES NOT CONSTITUTE APPROVAL OF THIS FIRE ALARM FOR ALL SITES. THE FIRE ALARM SYSTEM AND/OR COMPONENTS MAYBE REQUIRED TO BE CHANGED DUE TO SITE LOCATION, EXISTING CONDITIONS OR INCOMPATIBLE COMPONENTS.
- GROUND MG TEST SHALL BE DONE IN THE PRESENCE OF THE PROJECT INSPECTOR. ALL GROUNDING SHALL BE IN ACCORDANCE WITH CEC ARTICLE 250.

ELECTRICAL LEGEND

- 2'x4' TB LIGHTS W/ELECT. BALLAST
- EXTERIOR LIGHT FIXTURE AT +93" AFF
- SWITCH AT +48" AFF
- DUPLEX WALL RECEPTACLE 15A 125V 3-WIRE AT +18" AFF UON
- HVAC UNIT (HV)
- 4SD J-BOX FOR FIRE ALARM PULL STATION AT +48" AFF, 3/4" CO TO PULLSTRING
- 4SD J-BOX FOR FIRE ALARM STROBE/HORN AT +80" TO TO BOTTOM OF DEVICE AFF. 3/4" CO TO PULLSTRING.
- 4SD J-BOX FOR FIRE ALARM HORN AT +98" AFF 3/4" CO TO PULLSTRING
- WEATHER PROOF GUTTER BOX (8"x8"x4") AT +18" AFF RECEIVE 3/4" CO FROM FA DEVICE, PULLSTRING
- ELECTRICAL PANEL AT +80" AFF TO CENTERLINE 1 1/4" POWER NIPPLE POC, GND JUMPER BY SITE ELECT
- CLOCK AT +90" AFF
- 4SD J-BOX FOR HEAT DETECTOR (ATTIC) * MAX 25' FROM ANY WALL AND 50' BETWEEN THEM.
- 4SD J-BOX FOR SMOKE DETECTOR (ATTIC) * MAX 15' FROM ANY WALL AND 30' BETWEEN THEM.
- 2 GANG J-BOX AT 18" w/ CONDUIT STUBBED UP TO ATTIC SPACE.



TYP GROUNDING DETAIL 1



GROUND JUMPER • MOD LINE 2

NOTES

1. SCHOOL EQUIPMENT ANCHORAGE

THE FOLLOWING IS FOR THE ARCHITECTS INFORMATION ONLY:

THE SEISMIC ANCHORAGE OF ELECTRICAL EQUIPMENT SHALL CONFORM TO CCR TITLE 24, SECTION 1832A AND TABLE 10A-0. ANCHORAGE DETAILS FOR ROOF/FLOOR MOUNTED EQUIPMENT WEIGHING LESS THAN 400 LBS & HUNG EQUIPMENT WEIGHING LESS THAN 20 LBS MAY BE OMITTED FROM THE PLANS.

FOR ELECTRICAL DRAWINGS:

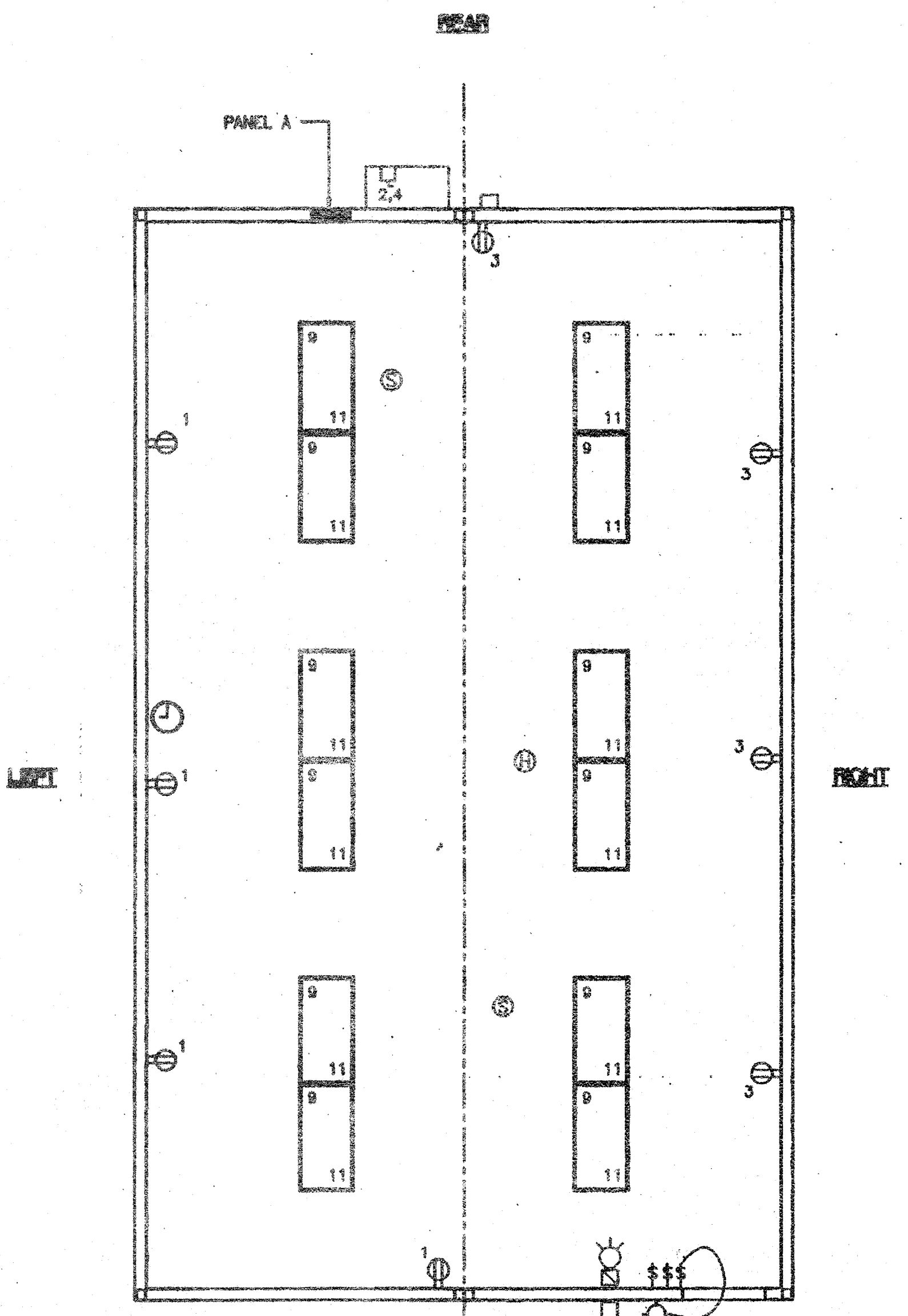
ALL ELECTRICAL EQUIPMENT SHALL BE BRACED OR ANCHORED TO RESIST A HORIZONTAL FORCE ACTING IN ANY DIRECTION USING THE FOLLOWING CRITERIA:

EQUIPMENT ON GRADE	33% OF OPERATING WEIGHT
EQUIPMENT ON STRUCTURE	40% OF OPERATING WEIGHT

FOR FLEXIBLY MOUNTED EQUIPMENT USE 4 TIMES THE ABOVE VALUES, AND FOR SIMULTANEOUS VERTICAL FORCE USE 1/3 TIMES THE HORIZONTAL FORCE.

THE ABOVE VALUES ARE FOR AN IMPORTANCE FACTOR, I = 1.0 AND SEISMIC ZONE, Z = 4

WHERE ANCHORAGE DETAILS ARE NOT SHOWN ON THE DRAWINGS THE FIELD INSTALLATION SHALL BE SUBJECT TO THE APPROVAL OF THE ARCHITECT AND THE FIELD ENGINEER OF THE OFFICE OF THE STATE ARCHITECT.



ELECTRICAL PLAN OPP-HAND (24'x40')
SCALE: 1/4" = 1'-0"

IDENTIFICATION STAMP
DIV. OF THE STATE ARCHITECT
OFFICE OF REGULATION SERVICES
04 105455
AC [Signature] FLS [Signature] SS [Signature]
DATE JUL 17 2003

~~04 105455
AC [Signature] FLS [Signature] SS [Signature]
DATE JUL 17 2003~~

AGENCY TRACKING NO. 63321-154
FILE NO. 15-6
IDENTIFICATION STAMP
DIV. OF THE STATE ARCHITECT
OFFICE OF REGULATION SERVICES
03-117035
AC [Signature] FLS [Signature] SS [Signature]
DATE 6/23/2016

REVISIONS

1		
2		
3		
4		
5		

Professional Engineer's Seal: [Blank]

Mechanical Engineer's Seal: [Blank]

PC Professional of Record Seal: [Seal: LICENSED ARCHITECT, No. 104796, EXPIRES 12/31/09, REISSUED DATE 5/2/09, STATE OF CALIFORNIA]

Architect's Seal: [Blank]

PC CBC 2001 IDENTIFICATION STAMP, DIV. OF THE STATE ARCHITECT, OFFICE OF REGULATION SERVICES, PC-04 104796, AC [Signature] FLS [Signature] SS [Signature], DATE 5/2/09

MODTECH INC.

2830 BARRETT AVENUE FAX (909) 943-4014
PERRIS, CALIF. 92572 FAX (909) 940-0427

PROJECT NUMBER: 4736
WILLIAM SCOTTSMAN

© MODTECH, INC. 2002
ALL RIGHTS RESERVED

DRAWN BY: GL
DATE: 07/07/03
CHECKED BY:
DATE: