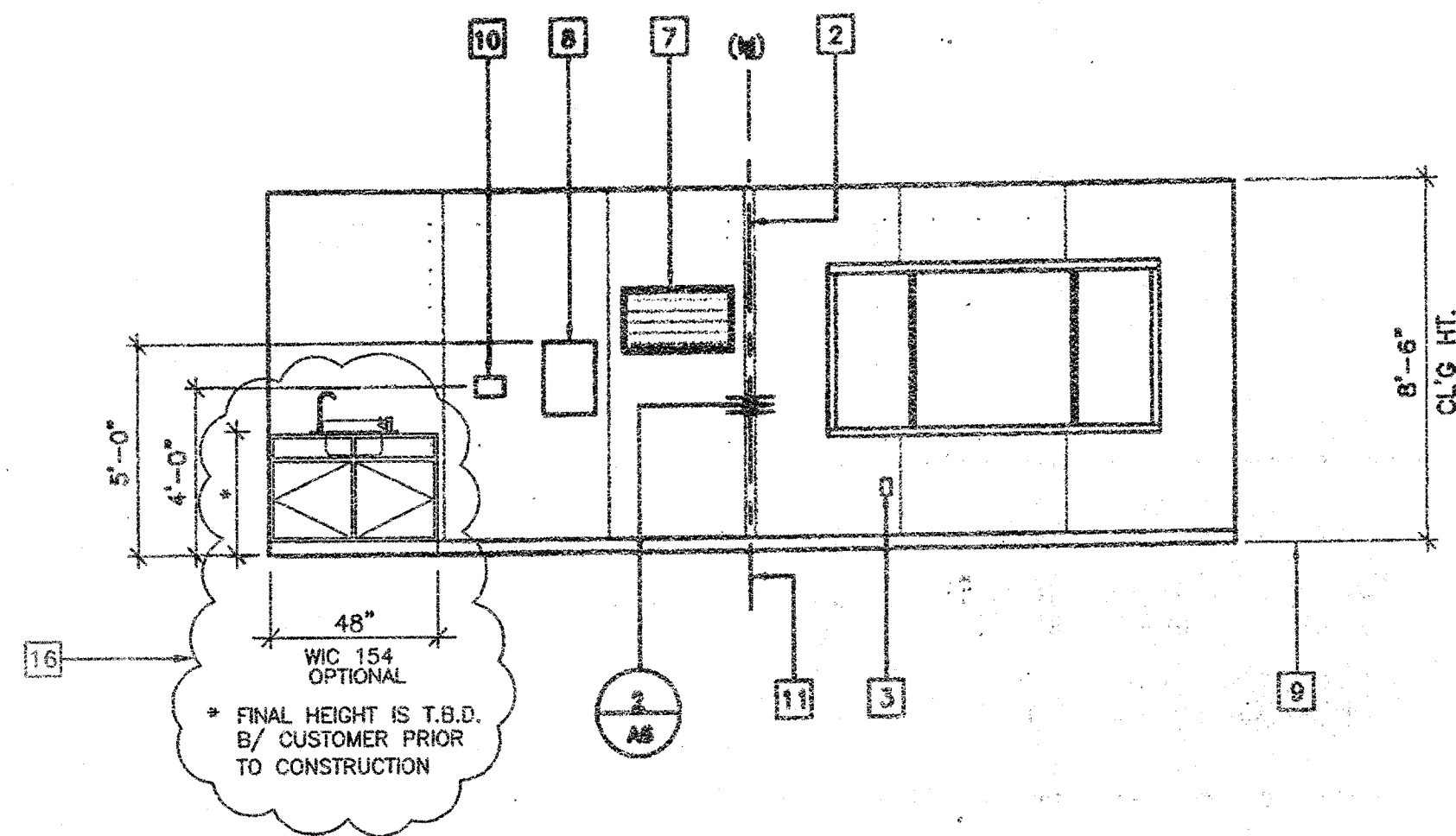
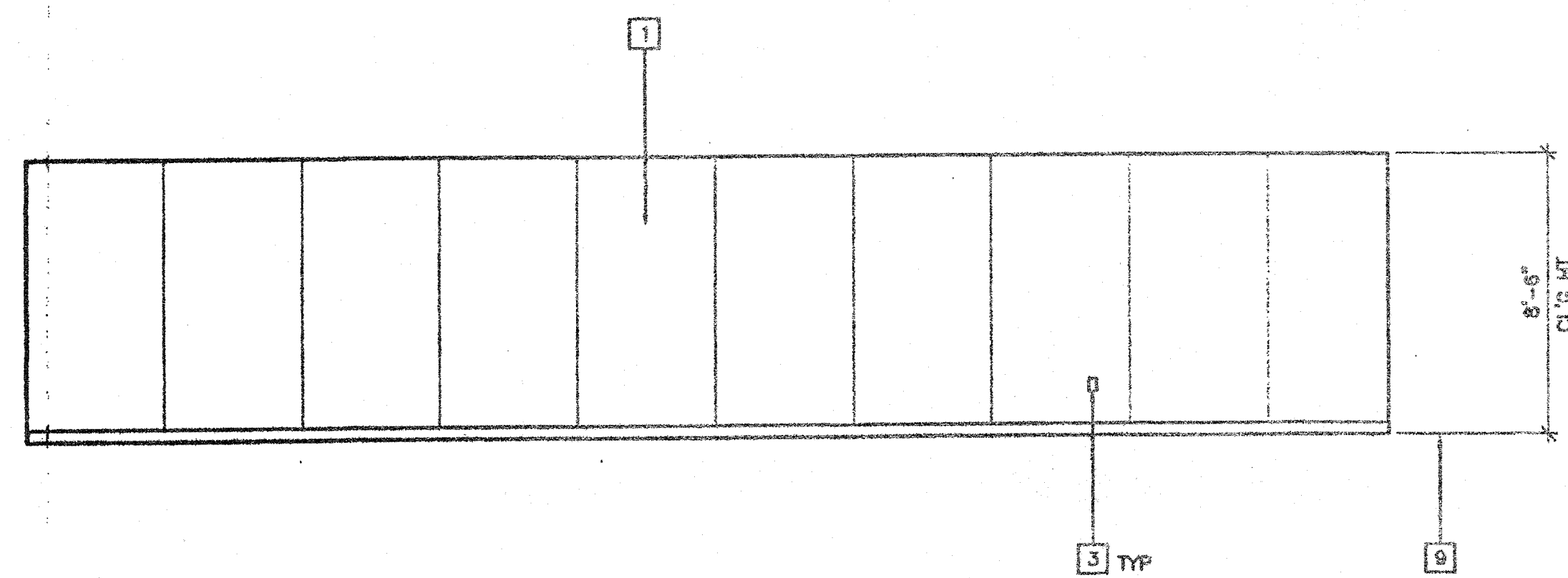


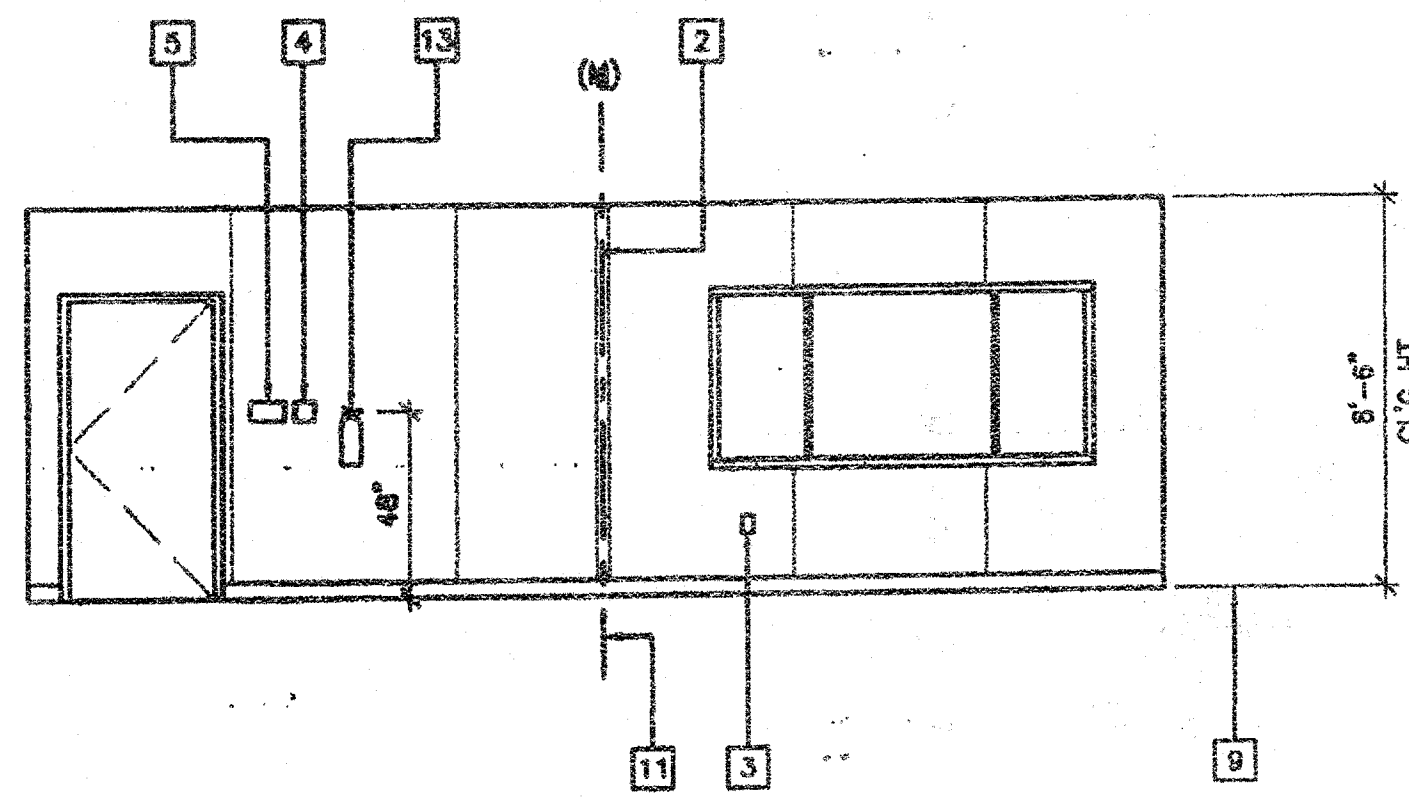
1 LEFT ELEVATION



2 REAR ELEVATION
OPP-HAND



3 RIGHT SIDE ELEVATION

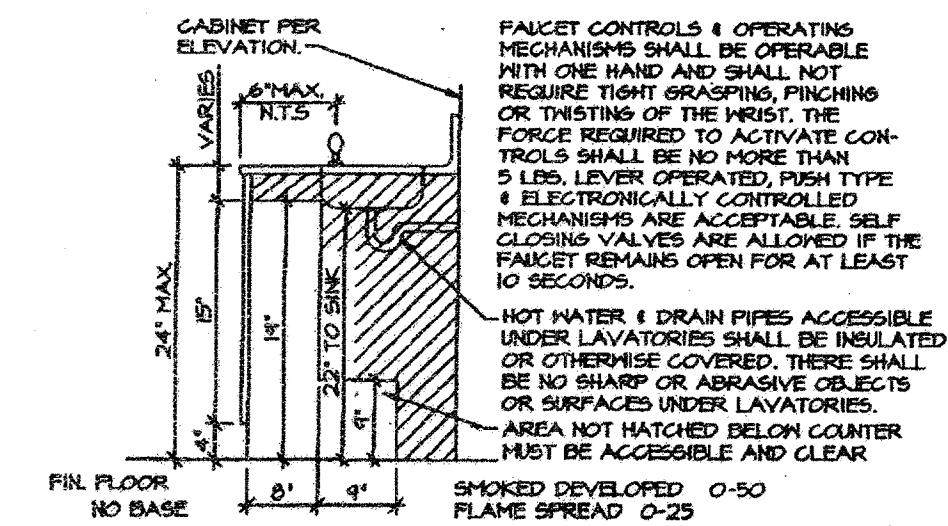


4 FRONT ELEVATION
OPP-HAND

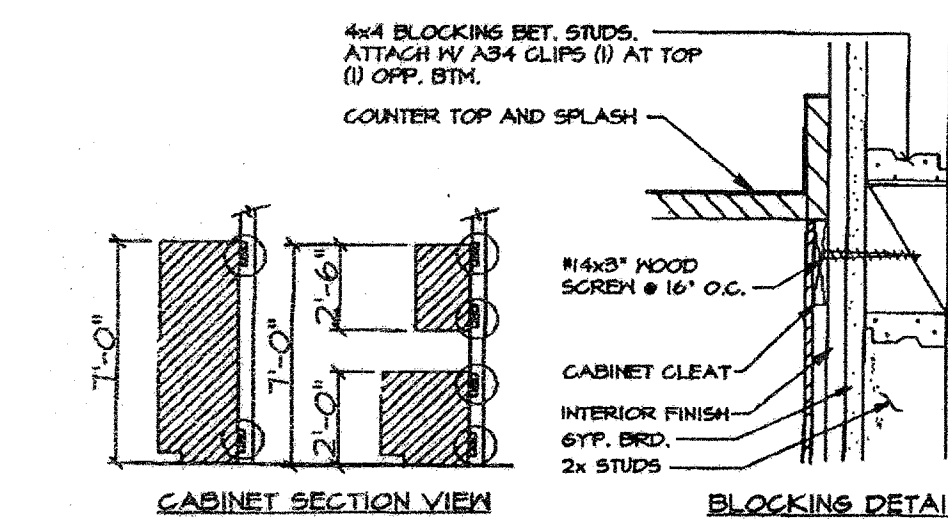
INTERIOR ELEVATIONS

(24'x40')

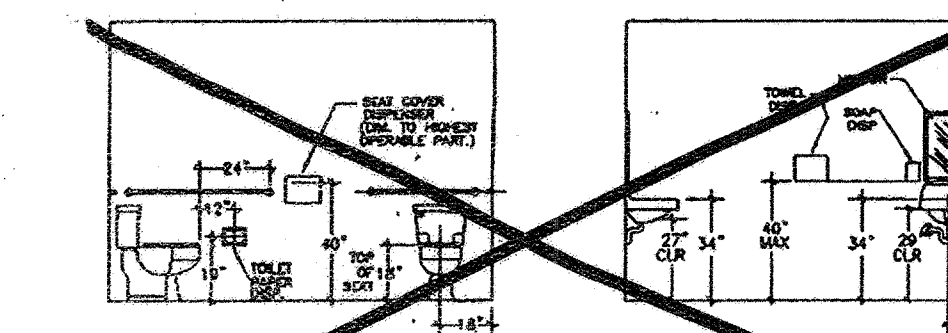
SCALE: 1/4" = 1'-0"



H.C. SINK CAB. SEC.



CABINET ATTACHMENT



ACCESSIBLE FIX. ELEVATIONS

THE DIVISION OF THE STATE ARCHITECT, OFFICE OF GENERAL SERVICES, RECOMMENDS THE FOLLOWING DIMENSIONS AS MINIMUMS. THE USE OF CALLERS' PROJECT BOOKS OR JOURNALS, THESE RECOMMENDATIONS ARE SUBJECT TO THE FEDERAL PROCUREMENT REGULATIONS AND, THEREFORE, IT IS RECOMMENDED THAT THE USER CONSULT THE FEDERAL ACQUISITION REGULATIONS (FAR) AND OTHER FEDERAL REGULATIONS THAT IS AND GIVEN.

A = RESIDENTIAL DIMENSIONS
R = RESIDENTIAL AND PRE-SCHOOL DIMENSIONS

DIMENSION	SUGGESTED		
	A	E	K
TOILET CENTERLINE FROM HALL	18"	18"	12"
TOILET SEAT HEIGHT	17"-18"	15"	10"-12"
GRAB BAR HEIGHT (SIDE)	33"	27"	20"-22"
TOILET PAPER IN FRONT OF TOILET	12" MAX.	6" MAX.	6" MAX.
NAPIEN DISPOSAL IN FRONT OF TOILET	12" MAX.	12" MAX.	N/A
DISPENSER OR MIRROR HEIGHT	40" MAX.	36" MAX.	32" MAX.
LAVATORY/SINK TOP HEIGHT	34" MAX.	24" MAX.	24" MAX.
LAVATORY/SINK KNEE CLEARANCE	28" MIN.	24" MIN.	18" MAX.
URINAL LIP HEIGHT	17" MAX.	15" MIN.	15" MIN.
URINAL FLUSH HANDLE HEIGHT	44" MAX.	37" MAX.	32" MAX.
DRINKING FOUNTAIN BUNNIE HEIGHT	36" MAX.	32" MAX.	30" MAX.
DRINKING FOUNTAIN KNEE CLEARANCE	27" MIN.	24" MIN.	22" MIN.
RAMP/STAIR HANDRAIL HEIGHT	54"-56"	27"	22"

RECOMMENDED ACCESSIBILITY DIMENSIONS

KEY NOTES

- 1 TYPICAL INTERIOR FINISH (FIN)
- 2 CLOSURE AT MODULAR JOINT
- 3 DUPLEX WALL RECEPTACLE (EL)
- 4 J-BOX FOR FIRE ALARM PULL STATION (EL)
- 5 LIGHT SWITCH (EL)
- 6 BASE
- 7 RETURN AIR GRILL
- 8 ELECTRICAL PANEL (EL)
- 9 FINISH FLOOR LINE (FIN)
- 10 THERMOSTAT (HV) SEE MECHANICAL PLANS
- 11 MODULAR JOINT
- 12 8040 PORCELAIN STEEL MARKER BOARD, TYPICAL FOR (2)
- 13 FIRE EXTINGUISHER: 5 LBS DRY CHEMICAL WITH 2A-10BC UL RATING ON WALL MOUNTED BRACKET, HANDLE AT 48" AFF
- 14 ELECTRIC CLOCK (EL)
- 16 SINK/CABINET (OPTIONAL)

AGENCY TRACKING NO. 63321-154
FILE NO. 15-6

IDENTIFICATION STAMP
DIV. OF THE STATE ARCHITECT
OFFICE OF REGULATION SERVICES
03-117035
AC PLS / SS
DATE 07/28/2016

IDENTIFICATION STAMP
DIV. OF THE STATE ARCHITECT
OFFICE OF REGULATION SERVICES
04 105455
AC PLS / SS
DATE JUL 17 2013

~~IDENTIFICATION STAMP
DIV. OF THE STATE ARCHITECT
OFFICE OF REGULATION SERVICES
JUL 16 2013~~

REVISIONS

Professional Engineer's Seal
Mechanical Engineer's Seal
Professional of Record Seal
Architectural Seal

PC
CBC 2001
IDENTIFICATION STAMP
DIV. OF THE STATE ARCHITECT
OFFICE OF REGULATION SERVICES
PC-04
104796
AC PLS / SS
DATE 5/7/03

MODTECH™
2830 BARRETT AVENUE FAX (909) 943-4014
PERRIS, CALIF. 92572 FAX (909) 940-0427

PROJECT NUMBER: 4736
WILLIAM SCOTTMAN

© MODTECH, INC. 2002
ALL RIGHTS RESERVED

DRAWN BY: GL
DATE: 07/07/03
CHECKED BY:
DATE:

MODTECH Index No.
INTERIOR ELEVATIONS
24'x40'

A5.02