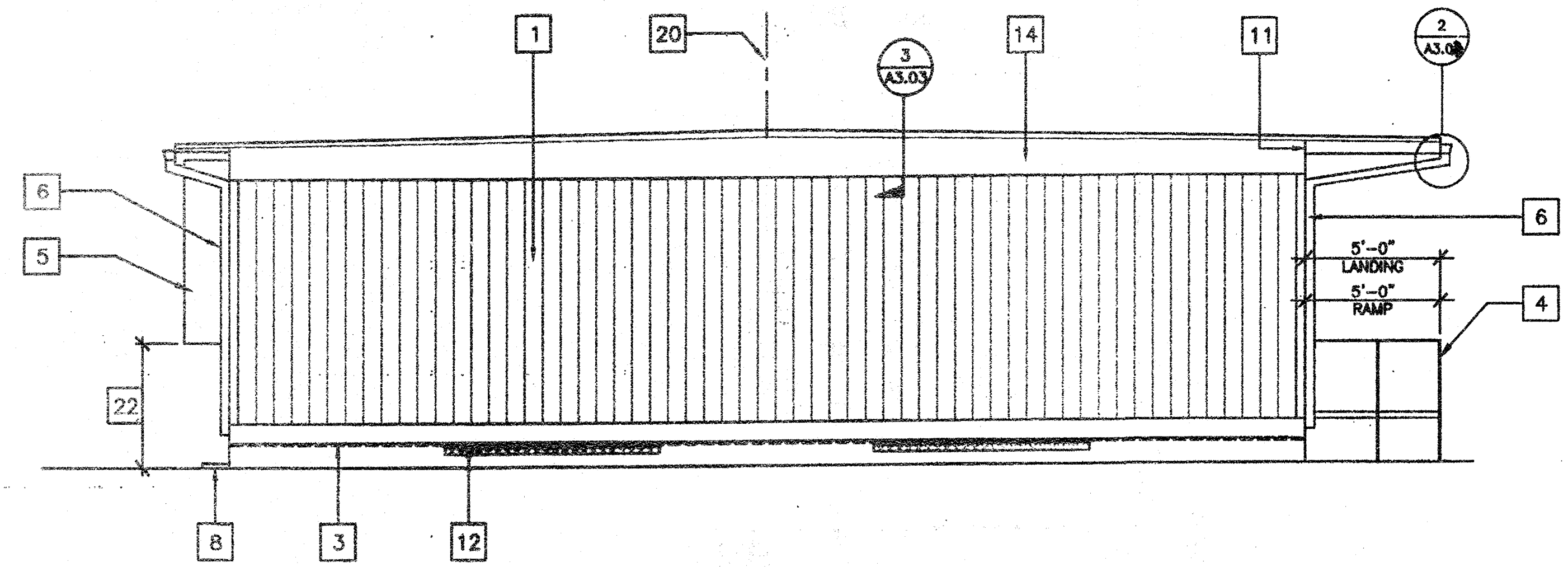
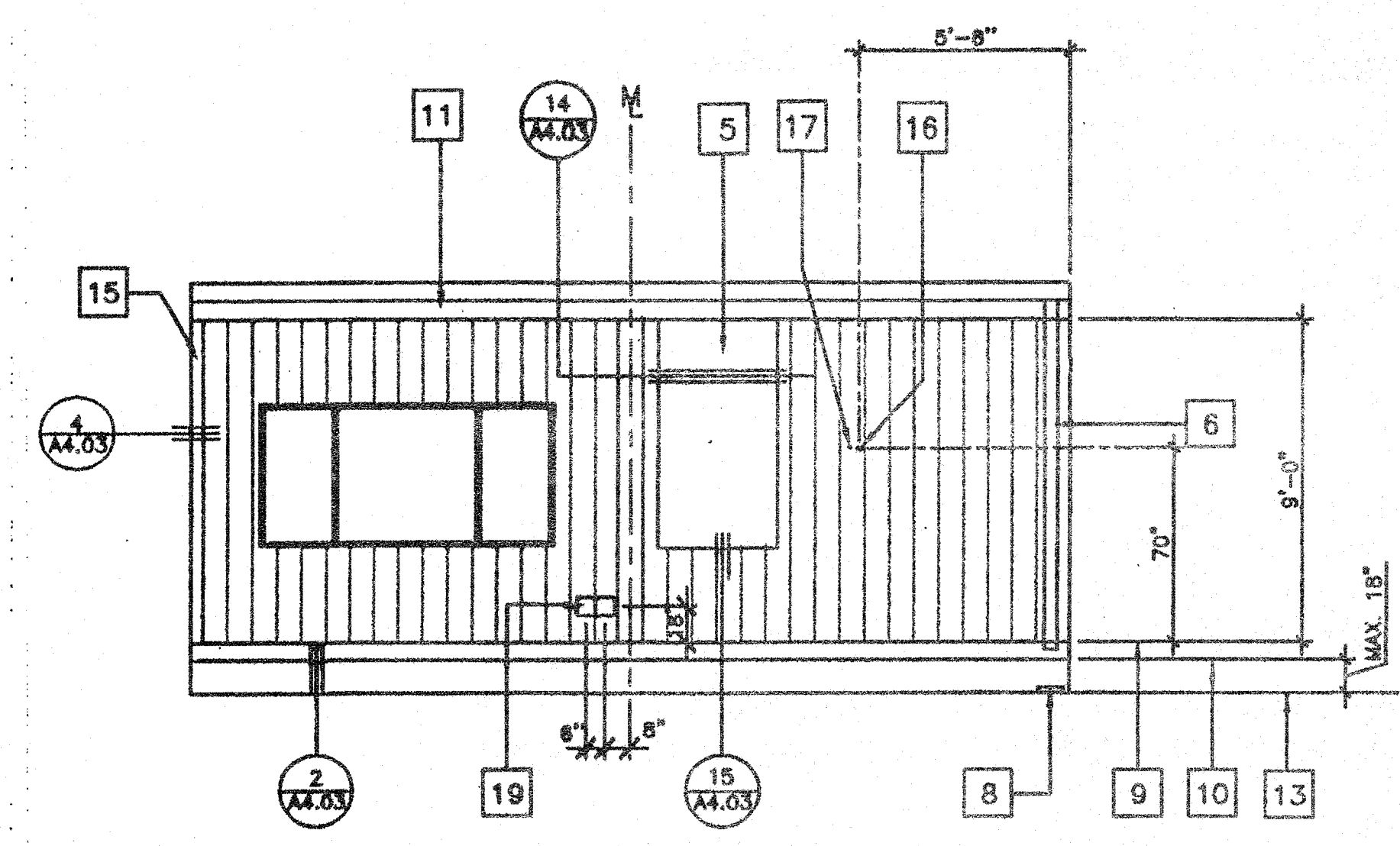


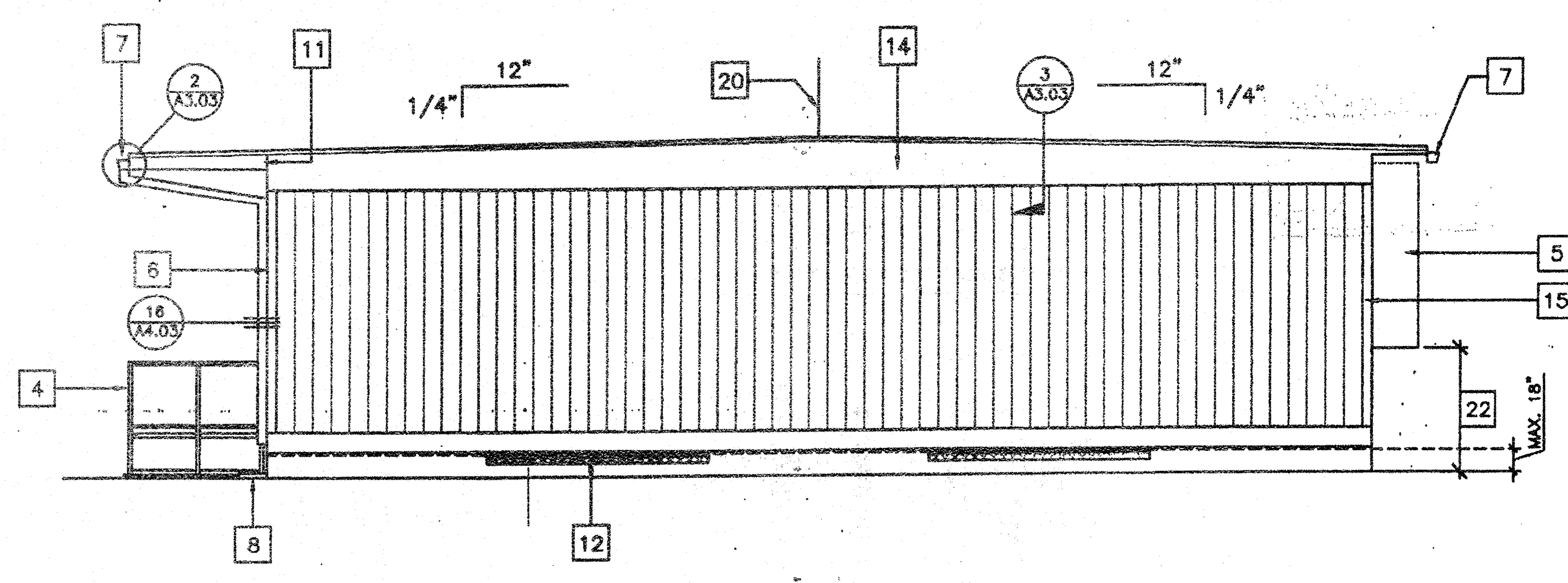
1 FRONT ELEVATION  
OPP-HAND 1/4" = 1'-0"



2 LEFT ELEVATION 1/4" = 1'-0"



3 REAR ELEVATION  
OPP-HAND 1/4" = 1'-0"



4 RIGHT ELEVATION 1/4" = 1'-0"

KEY NOTES

- 1 TYPICAL EXTERIOR SIDING (SEE A6.02)
- 2 EXTERIOR LIGHT FIXTURE (SEE SPEC'S)
- 3 TOP OF SKIRTING
- 4 RAMP AND LANDING RAMP SEE RAMP DRAWINGS
- 5 HVAC UNIT. SEE (HV)
- 6 DOWNSPOUT (TYP.) FOR (2). FASTEN TO BLD'G. TYP 3 PLACES (SEE 16/A4.03)
- 7 CONTINUOUS GUTTER WITH DOWNSPOUT (LOCATION OF DOWNSPOUT SHOWN ON ROOF PLAN) SEE A3.01
- 8 SPLASH BLOCK (BY OTHERS)
- 9 FINISH FLOOR LINE
- 10 BOTTOM FLANGE OF FLOOR BEAM
- 11 ROOF HEADER
- 12 VENT. SEE FOUNDATION PLAN
- 13 FINISH GRADE
- 14 ROOF BEAM SEE (STR)
- 15 COLUMN SEE (STR)
- 16 ELECTRICAL STUB-OUT SEE (EL)
- 17 GROUND STUB-OUT SEE (EL)
- 18 J BOX FOR EXT. FA HORN SEE (EL)
- 19 NEMA 6" X 6" GUTTER BOX SEE (EL)
- 20 RIDGE
- 21 NOT USED
- 22 IF HVAC UNIT IS LOCATED IN ANY PATH OF TRAVEL OR CIRCULATION AREA AND HEIGHT FROM GRADE TO BOTTOM OF UNIT EXCEEDS 27" THEN PROTECTION MUST BE PROVIDED BY DISTRICT PRIOR TO OCCUPANCY
- 23 SIGNAGE PROVIDED AND INSTALLED BY DISTRICT PRIOR TO OCCUPANCY. SEE SHEET A6.02

NOTES

1. SEE FOUNDATION PLAN FOR SIZE AND LOCATION OF UNDER FLOOR VENTS.

IDENTIFICATION STAMP  
DIV. OF THE STATE ARCHITECT  
OFFICE OF REGULATION SERVICES  
04 105455  
AC [initials] FLS [initials] SS [initials]  
DATE JUL 17 2003

~~04 105455  
AC [initials] FLS [initials] SS [initials]  
DATE JUL 17 2003~~

AGENCY TRACKING NO. 63321-154  
FILE NO. 15-6

IDENTIFICATION STAMP  
DIV. OF THE STATE ARCHITECT  
OFFICE OF REGULATION SERVICES  
03-117035  
AC [initials] FLS [initials] SS [initials]  
DATE 6/28/2010

REVISIONS	Description	Engineer's Seal	Mechanical Engineer's Seal	PC Professional of Record Seal	Architect's Seal

Description: \_\_\_\_\_  
 Engineer's Seal: \_\_\_\_\_  
 Mechanical Engineer's Seal: \_\_\_\_\_  
 PC Professional of Record Seal: \_\_\_\_\_  
 Architect's Seal: \_\_\_\_\_  
 PC CBC 2001 IDENTIFICATION STAMP  
 DIV. OF THE STATE ARCHITECT  
 OFFICE OF REGULATION SERVICES  
 No. C-24628  
 104796  
 PC-04  
 DATE 6/28/10

**MODTECH**  
 2830 BARRETT AVENUE FAX (909) 943-4014  
 PERRIS, CALIF. 92572 FAX (909) 940-0427

PROJECT NUMBER: 4736  
 WILLIAM SCOTTSMAN  
 © MODTECH, INC. 2002  
 ALL RIGHTS RESERVED  
**EXTERIOR ELEVATIONS w/ FASCIA**

DRAWN BY: GL  
 DATE: 07/07/03  
 CHECKED BY: \_\_\_\_\_  
 DATE: \_\_\_\_\_  
**A4.01**