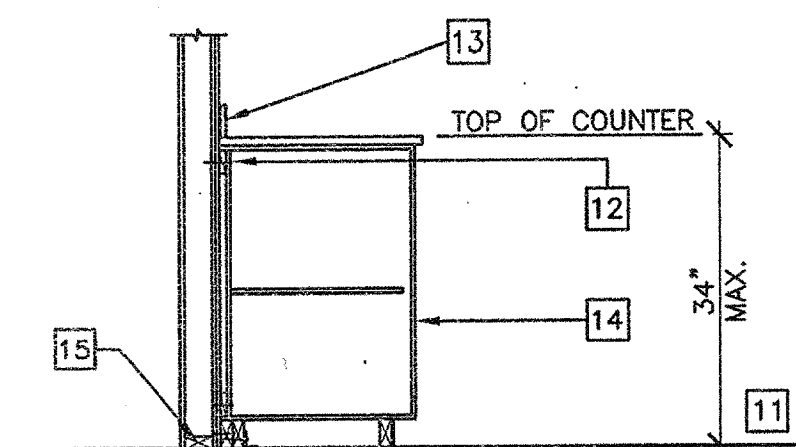
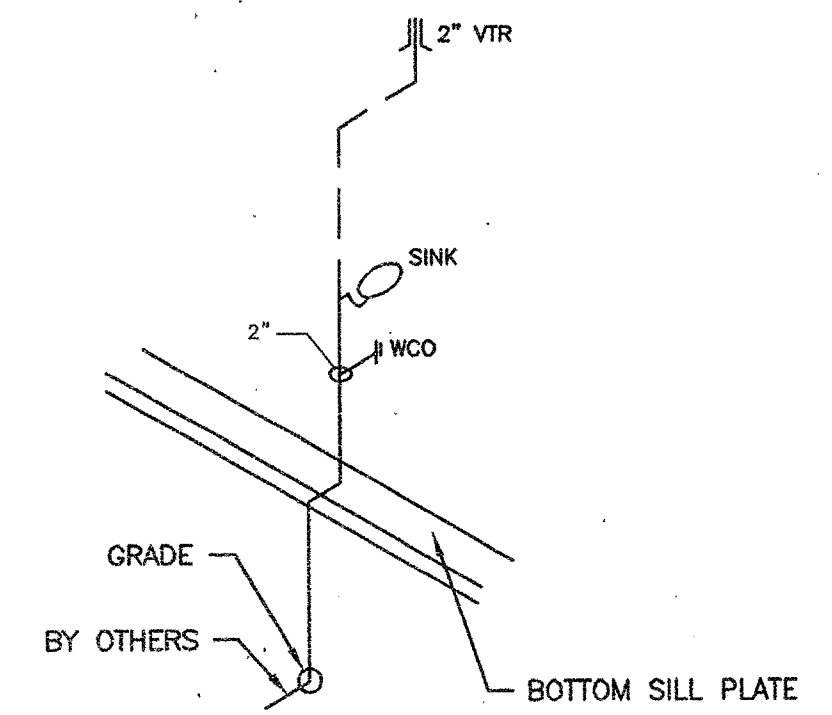


FLOOR PLAN  
OPP-HAND  
SCALE: 1/4" = 1'-0"

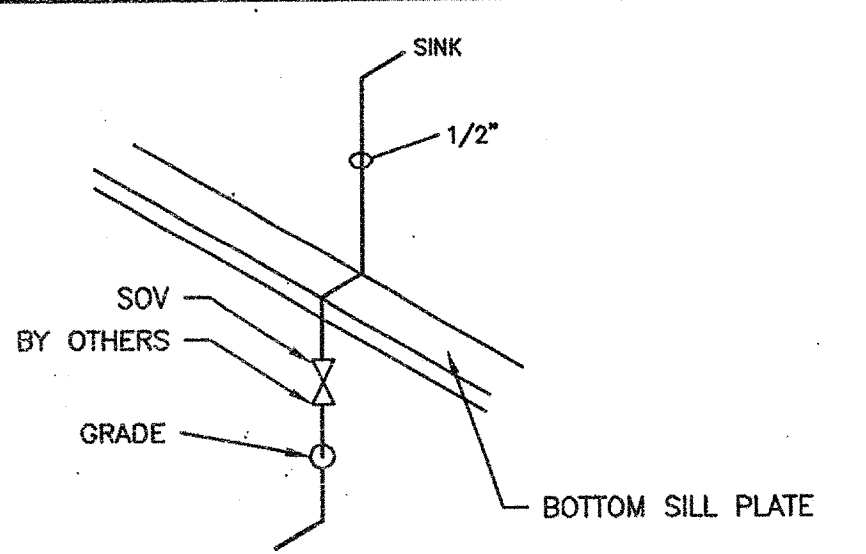


NOTES:  
1. SEE PLANS AND ELEVATIONS FOR EACH SPECIFIC DESIGN.  
2. REMOVE TOE KICK AND BASE FOR ACCESSIBLE CONDITION  
3. PROVIDE U SHAPED WIRE PULLS AT ALL ACCESSIBLE CASEWORK OR EQUAL.

SCALE: NTS (OPTIONAL)  
BASE CABINET ANCHORAGE 1



SCALE: NTS (OPTIONAL)  
PIPE SHALL BE TYPE ABS  
SINK CABINET WASTE 2



SCALE: NTS (OPTIONAL)  
PIPE SHALL BE TYPE 'L' COPPER  
SINK CABINET COLD WATER SUPPLY 3

- ### KEY NOTES
- 1 ROOF OVERHANG
  - 2 HVAC UNIT (HV)
  - 3 2 - 8'x4' PORCELAIN STEEL MARKER BOARDS (SEE SPEC'S FOR TYPE)
  - 4 FINISH FLOORING (FIN)
  - 5 INTERIOR FINISH (FIN)
  - 6 FIRE EXTINGUISHER - 5 LBS DRY CHEMICAL WITH 2A-10BC UL RATING WALL MOUNTED BRACKET, HANDLE AT 48" AFF
  - 7 MODLINE (M)
  - 8 ELECTRICAL PANEL
  - 9 RAMP/LANDING (RAMP) SEE RAMP DRAWINGS
  - 10 SIGNAGE PROVIDED AND INSTALLED BY DISTRICT PRIOR TO OCCUPANCY, SEE A6.02
  - 11 FINISH FLOOR
  - 12 4"x22 GA CONTINUOUS METAL STRAPS WITH #14 STMS AT 24" OC
  - 13 BACK SPLASH
  - 14 BASE CABINET
  - 15 BOTTOM PLATE
  - 16 COLD WATER P.O.C. SEE DETAIL# 3
  - 17 WASTE P.O.C. SEE DETAIL# 2
  - 18 CLASSROOM SINK, TYP. SEE A5.02 SINK: CRAC-ADA-1725-A-GR FAUCET: CHICAGO 350. BUBBLER: JSB 10 (OPTIONAL)

- ### NOTES
1. METAL TAG ON ALL MODULES. MECHANICALLY ATTACHED TO REAR EXTERIOR OF BUILDING SHOW D.S.A. APPLICATION NUMBER, MANUFACTURER'S NAME AND SERIAL NUMBER.
  2. METAL TAG MIN. 3 1/2"x1 1/2" STAMPED METAL I.D. W/  
1. OPSC BUILDING NUMBER  
2. DESIGN WIND LOAD  
3. DESIGN ROOF LOAD
  3. PROVIDE MIN. 3 1/2"x1 1/2" METAL TAG INSTALLED INSIDE THE ELECTRICAL PANEL SHOWING OPSC NUMBER AND DSA NUMBER.
  3. BLDG. MANUFACTURER TO VERIFY W/ CUSTOMER IF SINK AND CABINET OPTION APPLIES.

IDENTIFICATION STAMP  
DIV. OF THE STATE ARCHITECT  
OFFICE OF REGULATION SERVICES  
04 105455  
AC AS FLS P SS N/S  
DATE JUL 17 2003

~~IDENTIFICATION STAMP  
DIV. OF THE STATE ARCHITECT  
OFFICE OF REGULATION SERVICES  
04 105455  
AC AS FLS P SS N/S  
DATE JUL 17 2003~~

AGENCY TRACKING NO. 63321-154  
FILE NO. 15-6

IDENTIFICATION STAMP  
DIV. OF THE STATE ARCHITECT  
OFFICE OF REGULATION SERVICES  
03-117035  
AC N/S FLS P SS N/S  
DATE 6/28/2016

NO.	REVISIONS
1	
2	
3	
4	
5	

Electrical Engineer's Seal	Mechanical Engineer's Seal	PC Professional of Record Seal	Architect's Seal

**MODTECH**<sup>TM</sup>  
2830 BARRETT AVENUE FAX (909) 943-4014  
PERRIS, CALIF. 92572 FAX (909) 940-0427

PROJECT NUMBER: 4736  
WILLIAM SCOTTSMAN  
© MODTECH, INC. 2002 ALL RIGHTS RESERVED  
DRAWN BY: GL  
DATE: 07/07/03  
CHECKED BY:  
DATE:  
MODTECH Index No. **A1.1**