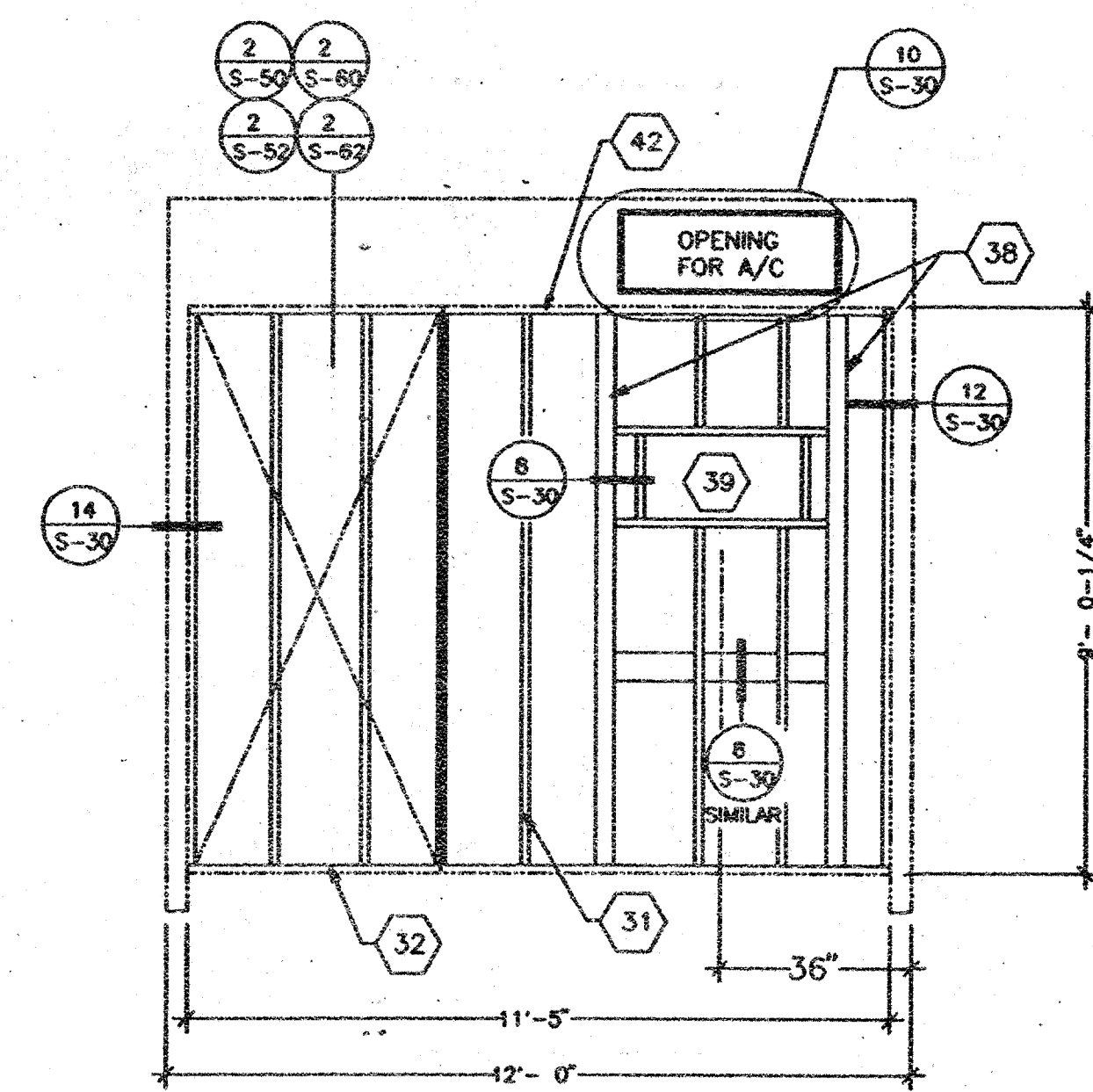
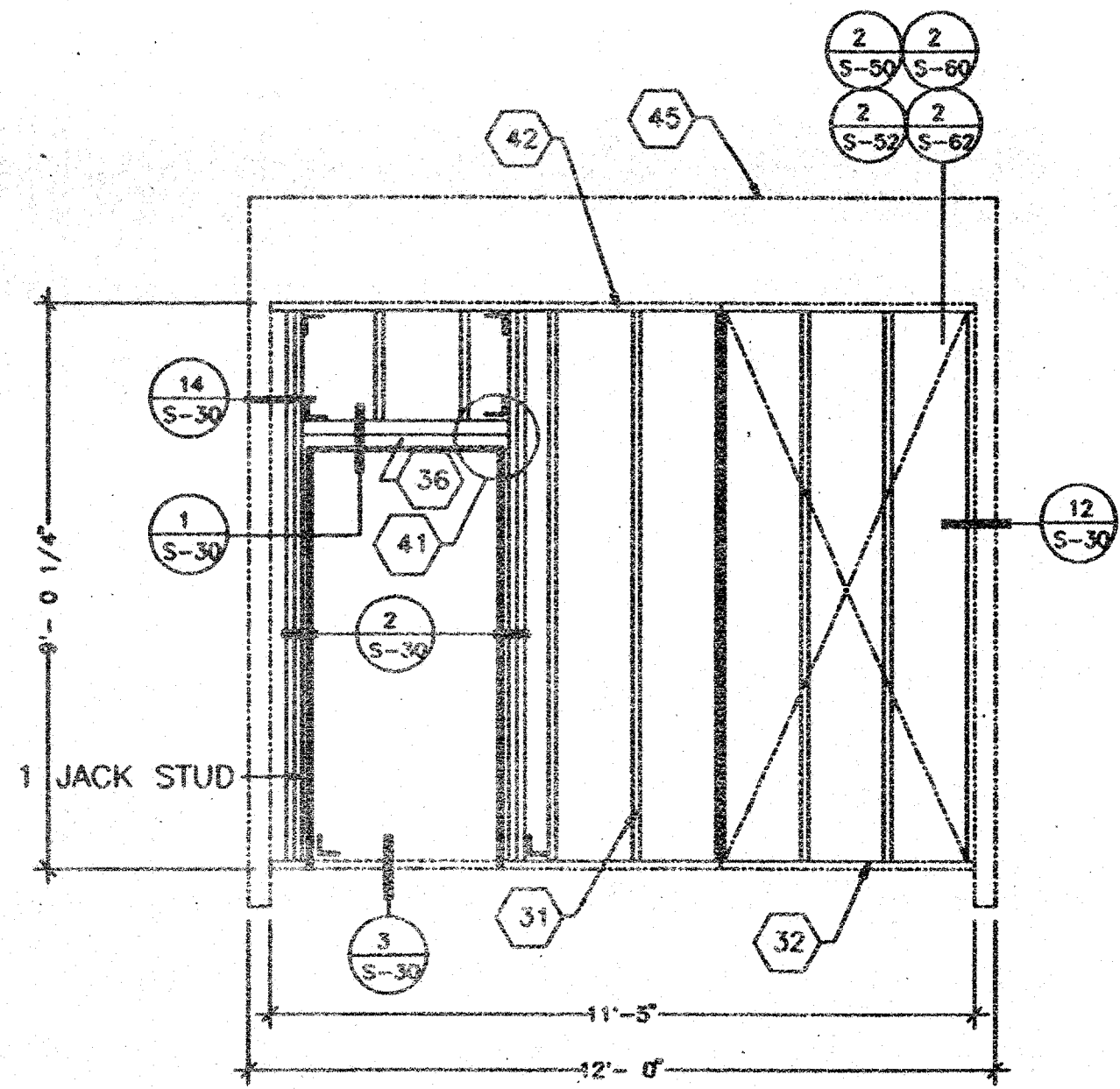
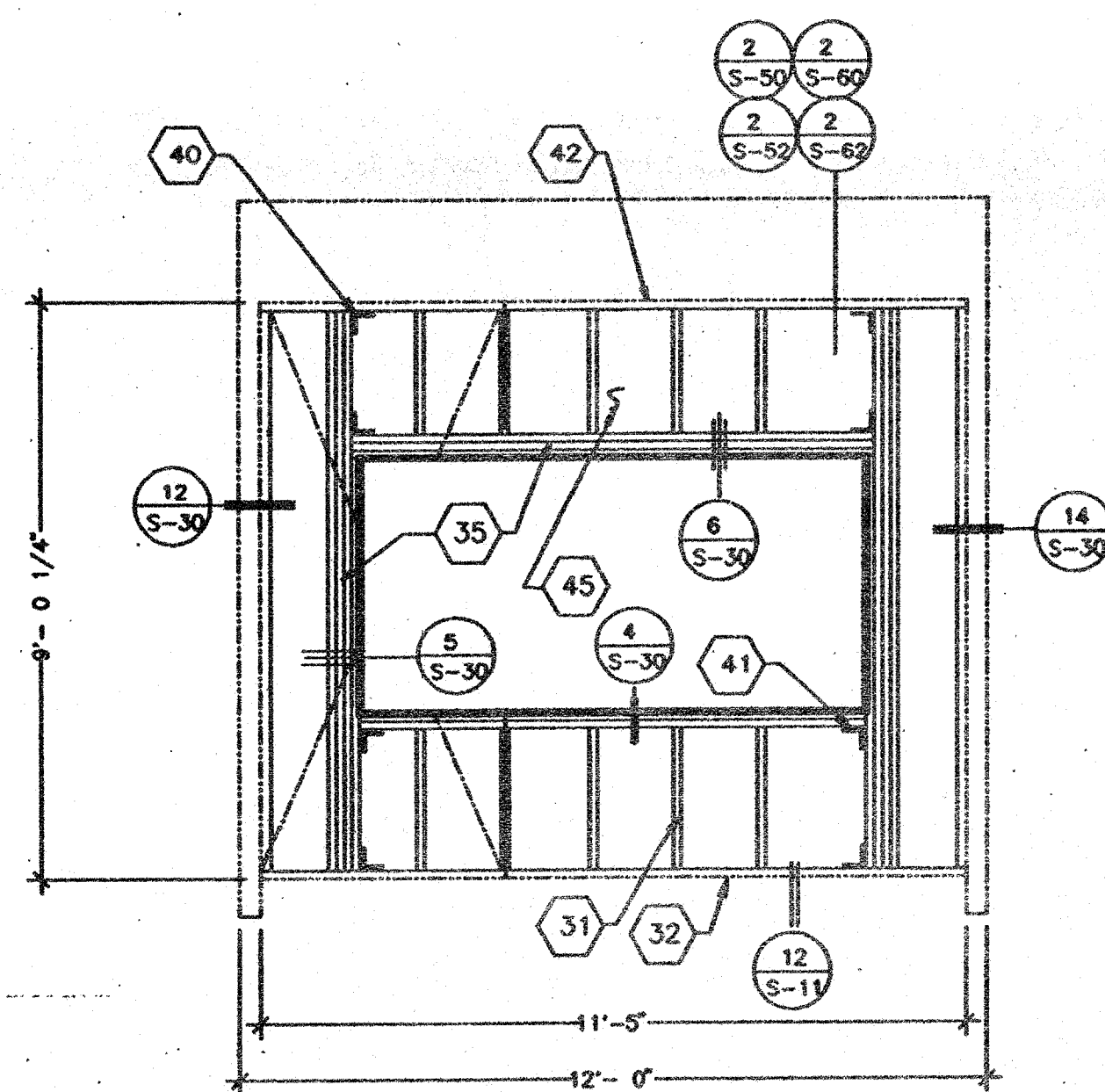
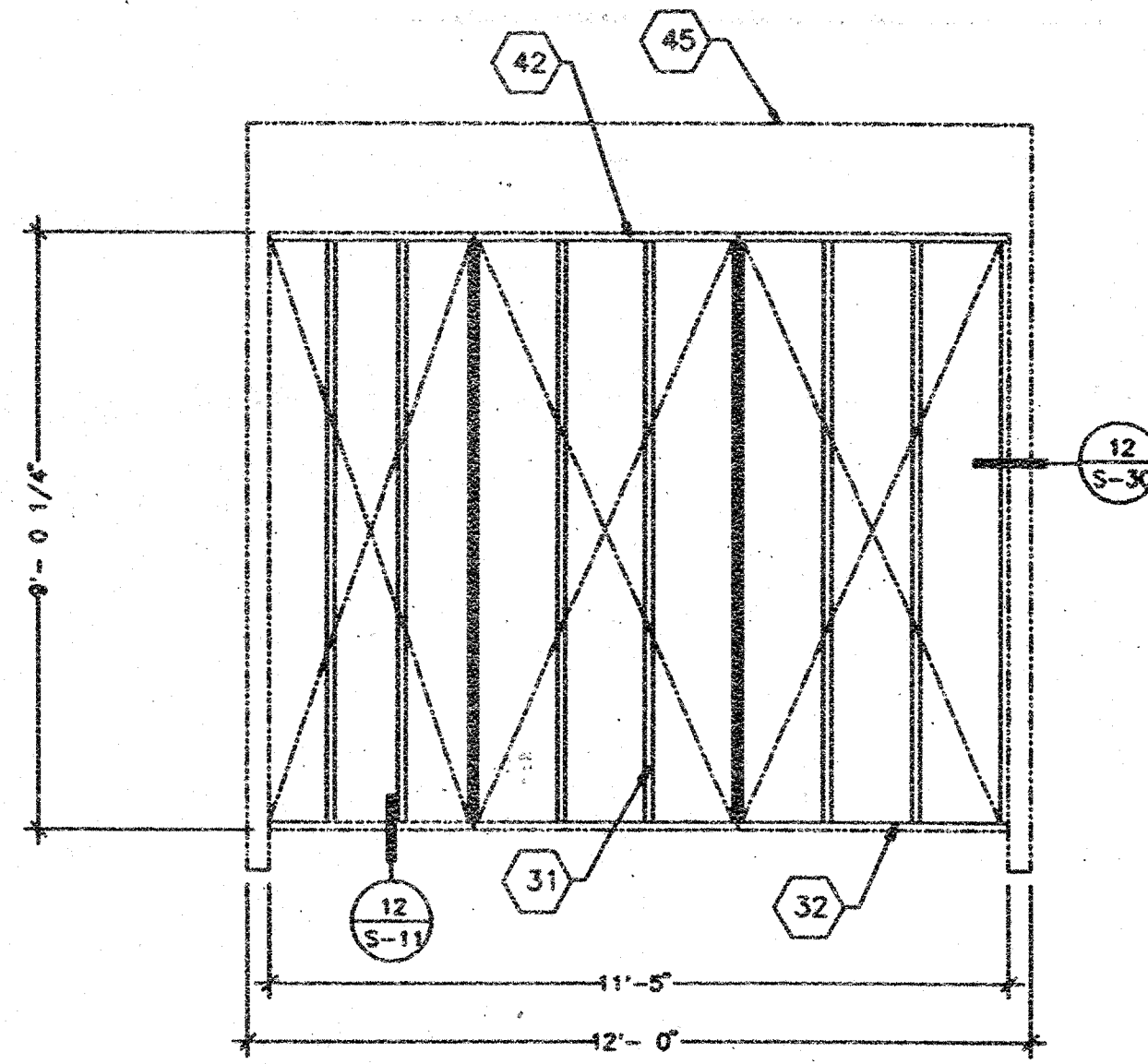


NOTE:
DOORS AND WINDOWS MAY BE INSTALLED
IN SIDEWALL AT ANY POINT IN ANY
COMBINATION.



KEYNOTES

- 10 STEEL FLOOR JOIST- SEE SHEET S-11
- 31 STUDS- 2x4 H.F. STUD GRADE @ 16" O.C.
- 32 TOP AND BOTTOM PLATE- 2x4 H.F. STD & BETTER.
- 34 FRAME FOR 4'-0" x 4'-0" WINDOW:
USE (2) FULL HEIGHT HEM FIR 2x4 STUDS WITH (1) 2x4 TRIMMER BOTH SIDES, (2) 2x4 FLAT FOR WINDOW SILL AND (2) 2x4 FLAT FOR HEADER.
- 35 FRAME FOR 8'-0" x 4'-0" WINDOW:
USE (3) FULL HEIGHT HEM FIR 2x4 STUDS WITH (1) 2x4 TRIMMER BOTH SIDES, (2) 2x4 FLAT FOR WINDOW SILL AND (3) 2x4 FLAT FOR HEADER.
- 36 FRAME FOR 3'-0", 6'-8" OR 7'-0" DOOR. USE (2) FULL HEIGHT 2x4 JAMB STUDS WITH (1) 2x4 TRIMMER BOTH SIDES, & (2) 2x4 FOR HEADER.
- 37 NAIL THRU VERTICAL STUD INTO HORIZONTAL HEAD OR SILL WITH MIN. (4) .131 X 3 1/4" NAILS PER CONNECTION. TYPICAL AT CORNERS OF ALL OPENINGS.
- 38 4x4 H.F. #2 POST
- 39 SEE SHEET G-1 FOR A/C SIZE AND TONAGE.
- 40 TYPICAL 'SIMPSON' A35 CLIPS (4) PLACES TO TOP AND BOTTOM PLATES.
- 41 TYPICAL 'SIMPSON' A35 CLIPS (4) PLACES TO WINDOW SILL AND HEADER OR (2) PLACES TO DOOR HEADER.
- 42 2x4 PLATE- H.F. STD. GRD. OR BETTER.
- 43 FIRE BLOCKING. SEE SECTION 708 OF 1994 C.B.C.
- 44 ROOF SHEATHING. SEE ROOF SECTION
- 45 R-19 FIBERGLASS INSULATION.
- 46 SUSPENDED CEILING
- 47 TYPICAL INTERIOR FINISH- SEE SHEET G-1
- 48 R-11 FIBERGLASS INSULATION.
- 49 PLYWOOD FLOOR SHEATHING- SEE SHEET S-11
- 51 PLYWOOD SIDING/SHEATHING- SEE SHEET G-1 FOR MATERIAL. NAIL SIDING WITH CORROSION RESISTANT 8d NAILS @ 6" BOUNDARY & EDGES, 12" FIELD, OR KNURLED PIN #43-3120B BY DUO-FAST, OR KNURLED ANK BY ET&F OR EQUAL FOR METAL STUD CONSTRUCTION.
- 71 STEEL ROOF JOIST- SEE SHEET S-40

THIS DRAWING AND THE MATERIAL CONTAINED HEREIN ARE THE PROPERTY OF MSI, INC. AND SHALL NOT BE REPRODUCED, COPIED OR OTHERWISE DISPOSED OF DIRECTLY OR INDIRECTLY WITHOUT THE WRITTEN CONSENT OF MSI, INC. FOR THE PURPOSE OF FURNISHING ANY INFORMATION OR DRAWINGS, PRINTS, APPARATUS AND WRITTEN CONSENT OF MSI, INC. ALL PATENTABLE MATERIAL CONTAINED HEREIN AND ORIGINATING WITH MSI, INC. SHALL BE THE PROPERTY OF MSI, INC.

ARCHITECT APPROVAL

STRUCTURAL ENGINEERS STAMP

STATE AGENCY APPROVAL

STATE AGENCY APPROVAL

AGENCY TRACKING NO. 63321-154
FILE NO. 15-6
DIV. OF THE STATE ARCHITECT
OFFICE OF REGULATION SERVICES
03-111035
AC FLS SS
DATE 6/28/2016

IDENTIFICATION STAMP
OFFICE OF THE STATE ARCHITECT
OFFICE OF REGULATION SERVICES
4 100118
AC FLS SS
DATE JAN 15 1998

IDENTIFICATION STAMP
OFFICE OF THE STATE ARCHITECT
OFFICE OF REGULATION SERVICES
04 100073
AC FLS SS
DATE JAN 15 1998

MSI
MODULAR STRUCTURES INTERNATIONAL, INC.
920 CITRUS AVE. RIVERSIDE, CALIFORNIA, 92507
PHONE: (909) 788-3033 FAX: (909) 788-1523

PROJECT
'24'X40', 36'X40', & 48'X40'
MODULAR CLASSROOM BUILDING

TITLE
TYPICAL EXTERIOR WALL
CONSTRUCTION FOR SINGLE
OR DOUBLE ROOF PITCH

JOB #

DATE 12-8-97
DRAWN BY R.D.L.
SCALE NONE
APPROVED
REVISIONS

STATE AGENCY APPROVAL

SHEET NO.
S-20