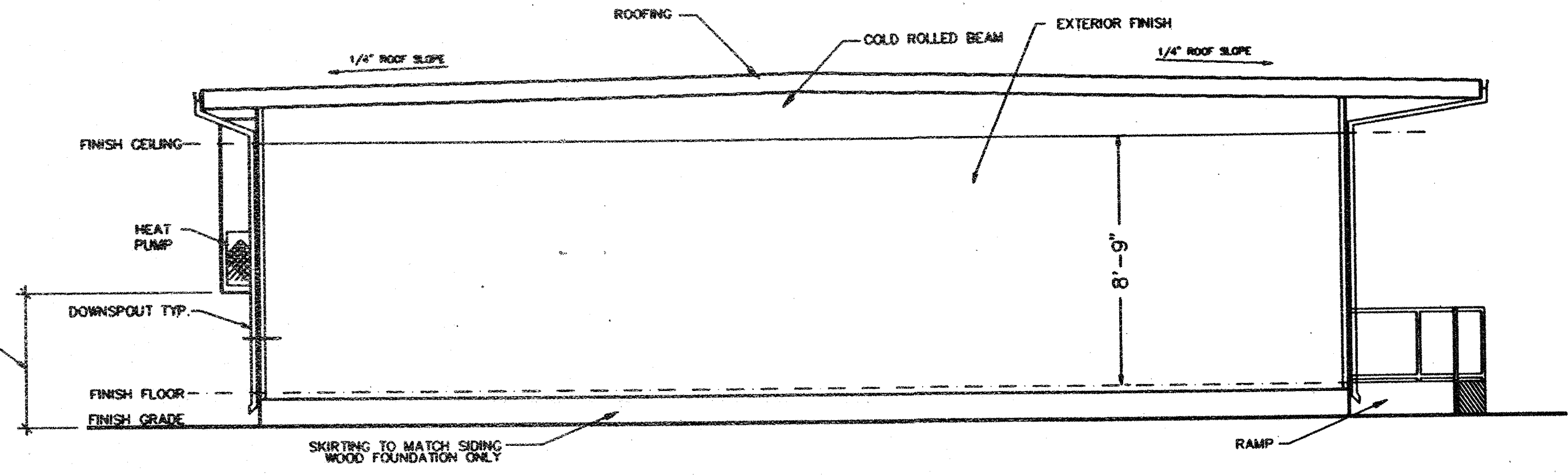
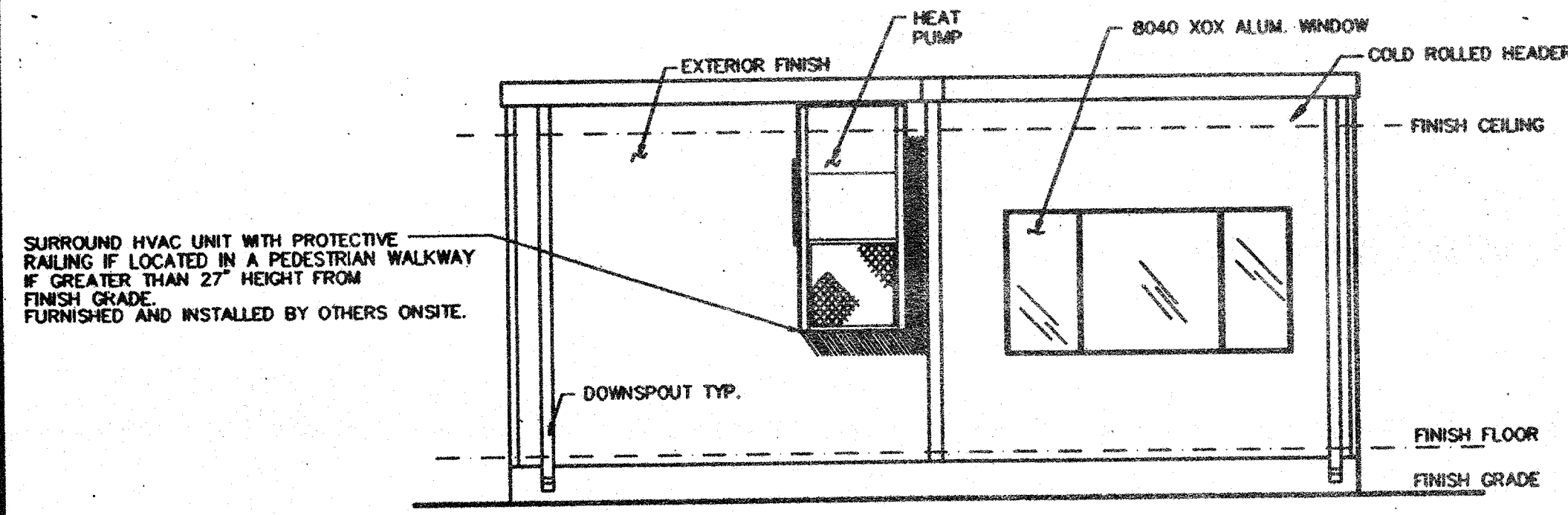


**ELEVATION (A)**  
(SEE SHEET A-1 FOR MONO SLOPE ROOF ELEVATIONS.)

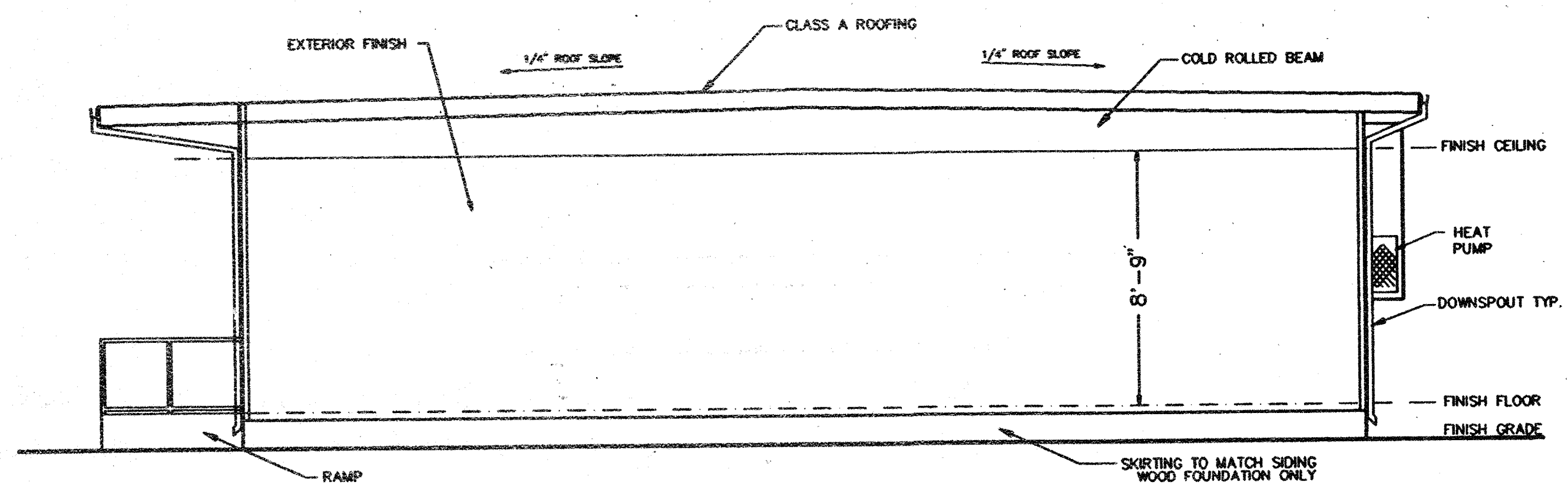
SURROUND HVAC UNIT WITH PROTECTIVE RAILING IF LOCATED IN A PEDESTRIAN WALKWAY IF GREATER THAN 27" HEIGHT FROM FINISH GRADE. FURNISHED AND INSTALLED BY OTHERS ONSITE.



**ELEVATION (C)**  
(SEE SHEET A-1 FOR MONO SLOPE ROOF ELEVATIONS.)



**ELEVATION (B)**  
(SEE SHEET A-1 FOR MONO SLOPE ROOF ELEVATIONS.)



**ELEVATION (D)**  
(SEE SHEET A-1 FOR MONO SLOPE ROOF ELEVATIONS.)

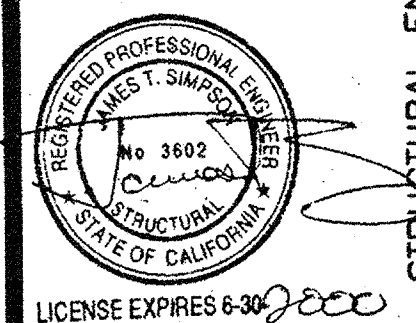
THIS DRAWING AND THE MATERIAL CONTAINED THEREIN ARE THE PROPERTY OF M.S.I. INC. AND SHALL NOT BE REPRODUCED, COPIED, OR TRANSMITTED IN ANY FORM OR BY ANY MEANS, ELECTRONIC OR MECHANICAL, INCLUDING PHOTOCOPYING, RECORDING, OR BY ANY INFORMATION STORAGE AND RETRIEVAL SYSTEM, WITHOUT THE WRITTEN CONSENT OF M.S.I. INC. ALL PATENTABLE AND WRITABLE INVENTIONS, TRADE NAMES, AND TRADE MARKS CONTAINED HEREIN AND ORIGINATING WITH M.S.I. INC. SHALL BE THE PROPERTY OF M.S.I. INC. MATERIAL CONTAINED HEREIN IS THE PROPERTY OF M.S.I. INC. M.S.I. INC. SHALL BE THE PROPERTY OF M.S.I. INC.

**MSI**  
MODULAR STRUCTURES INTERNATIONAL, INC.  
920 CITRUS AVE. RIVERSIDE, CALIFORNIA 92507  
PHONE: (909) 788-3035 FAX: (909) 788-1823

PC-

ARCHITECT APPROVAL

STRUCTURAL ENGINEERS STAMP



AGENCY TRACKING NO. 63321-154  
FILE NO. 15-6  
REGISTRATION STATUS: REGISTERED ARCHITECT  
DIV. OF THE STATE ARCHITECT  
OFFICE OF REGULATION SERVICES  
AC 03-117035  
DATE 6/28/2016

STATE AGENCY APPROVAL

STATE AGENCY APPROVAL

PROJECT: 24'X40' MODULAR CLASSROOM BUILDING  
TITLE: EXTERIOR ELEVATIONS (DUAL PITCH ROOF)

JOB #	
DATE	12-8-97
DRAWN BY	R.D.L.
SCALE	
APPROVED	
REVISIONS	

SHEET NO.  
A-2-24