

COPYRIGHT:
 Any reproduction or distribution for any purpose other than authorized by IBI Group is forbidden.
 COPYRIGHT 2014 IBI GROUP

REVISIONS			
NO.	DATE	APPR.	DESCRIPTION

CONSULTANT
JMPE
 ELECTRICAL ENGINEERING
 LIGHTING DESIGN
 CA REGISTRATION NO. E13085
 14223
 5500 MING AVENUE,
 SUITE 201
 BAKERSFIELD, CA 93309
 (805) 831-7005
 FAX (805) 831-7813
 email: maloney@jmpe.com
 www.jmpe.com

AGENCY INFORMATION:
 AGENCY TRACKING NO. 63321-154
 FILE NO. 15-6
 IDENTIFICATION STAMP
 DIV. OF THE STATE ARCHITECT
 OFFICE OF REGULATION SERVICES
 03-117035
 AC - FLS 60 SS
 DATE 6/23/2016

BAKERSFIELD CITY SCHOOL DISTRICT

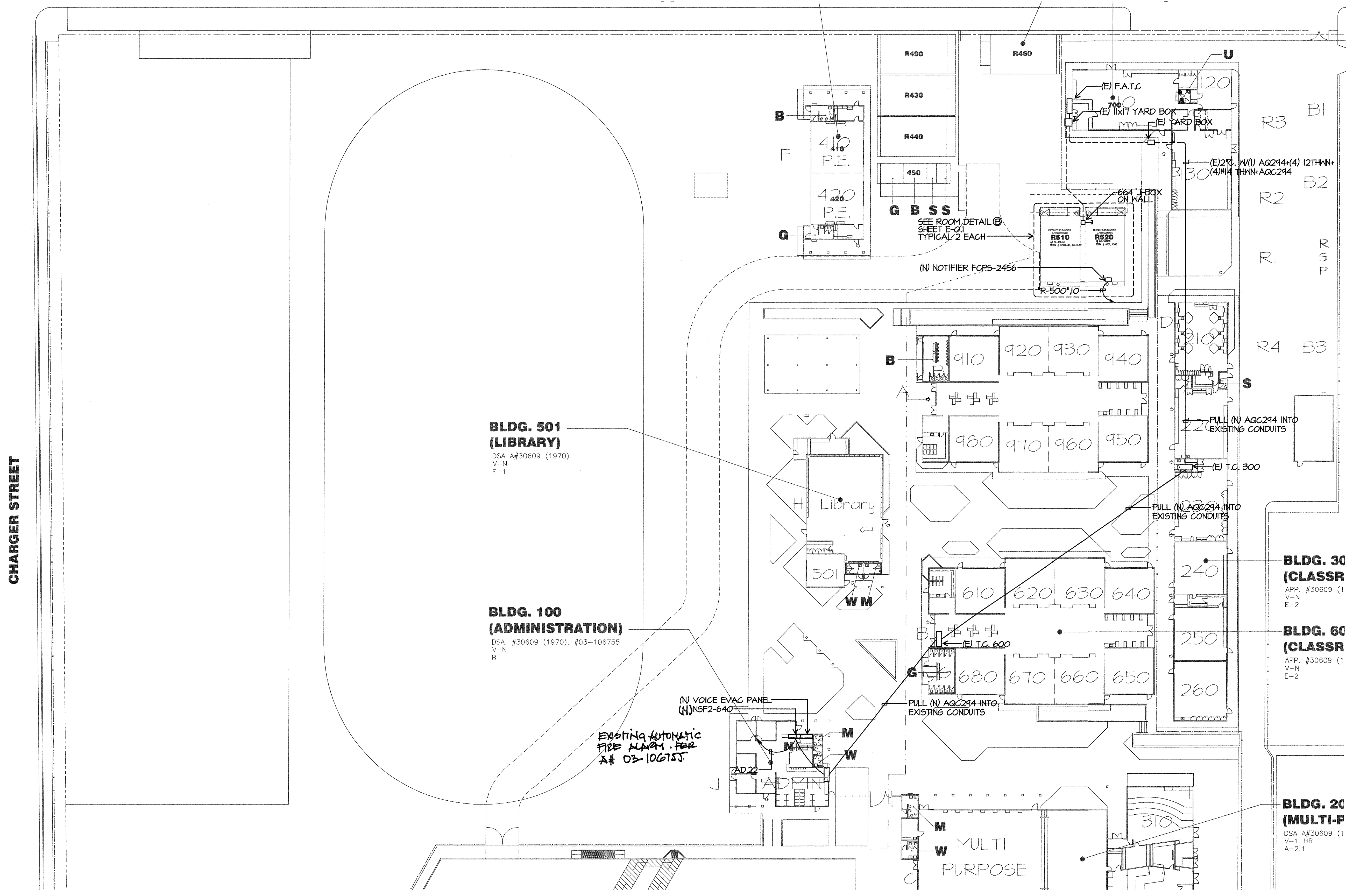
CHIPMAN JR. HIGH SCHOOL (2) RELOCATABLES
 2905 EISSLER STREET
 BAKERSFIELD, CA 93306

OPSC or OSHPD PROJ. NO:

PROJECT NO:	14146.000
DRAWN BY:	AC
CHKD BY:	KT
ISSUE DATE:	04/27/2016

SHEET TITLE
**FIRE ALARM
 PARTIAL SITE
 PLAN**

SHEET NUMBER
E-2



**BLDG. 501
 (LIBRARY)**
 DSA A#30609 (1970)
 V-N
 E-1

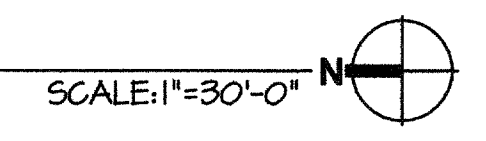
**BLDG. 100
 (ADMINISTRATION)**
 DSA #30609 (1970), #03-106755
 V-N
 B

**BLDG. 30
 (CLASSR)**
 APP. #30609 (1)
 V-N
 E-2

**BLDG. 60
 (CLASSR)**
 APP. #30609 (1)
 V-N
 E-2

**BLDG. 20
 (MULTI-P)**
 DSA A#30609 (1)
 V-1 HR
 A-2.1

FIRE ALARM PARTIAL SITE PLAN



CHARGER STREET