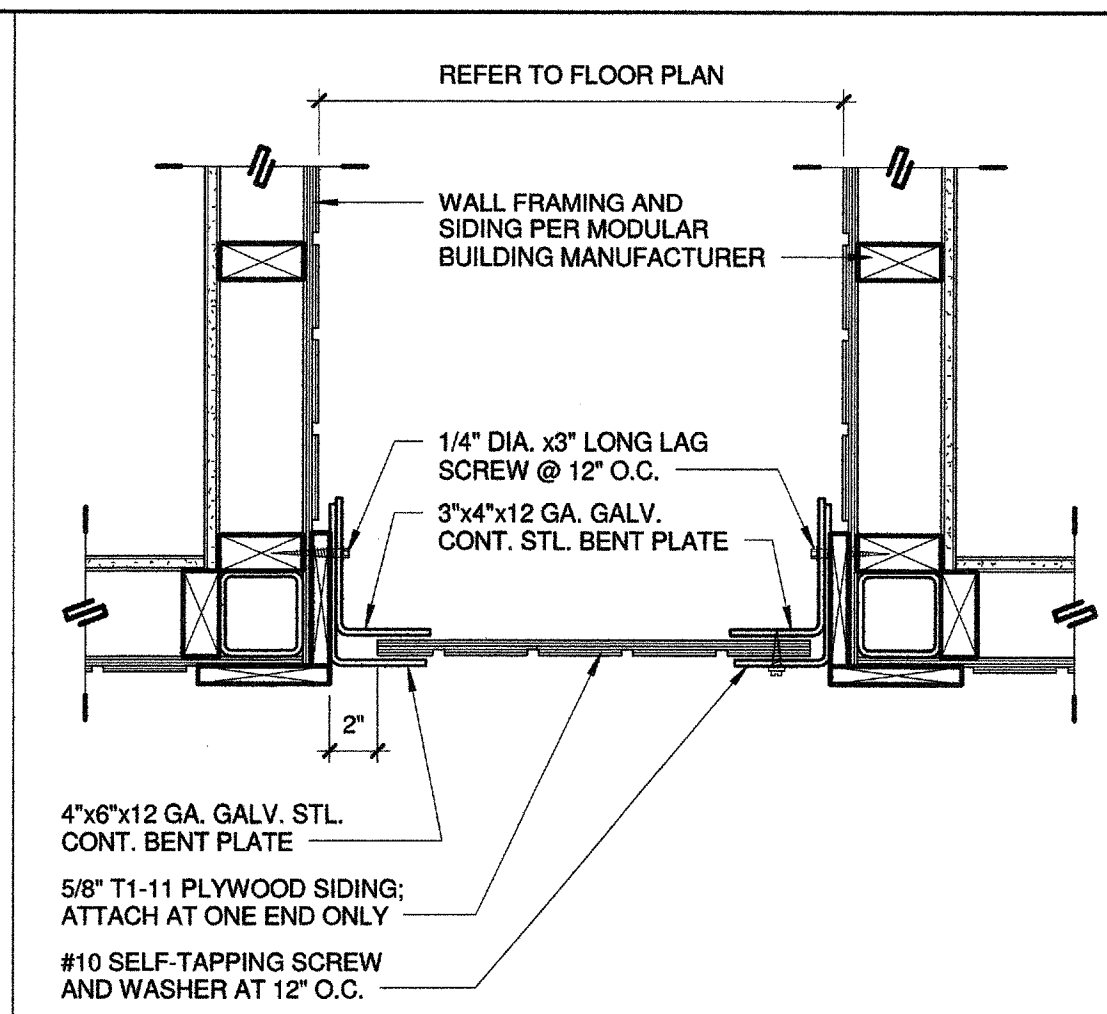
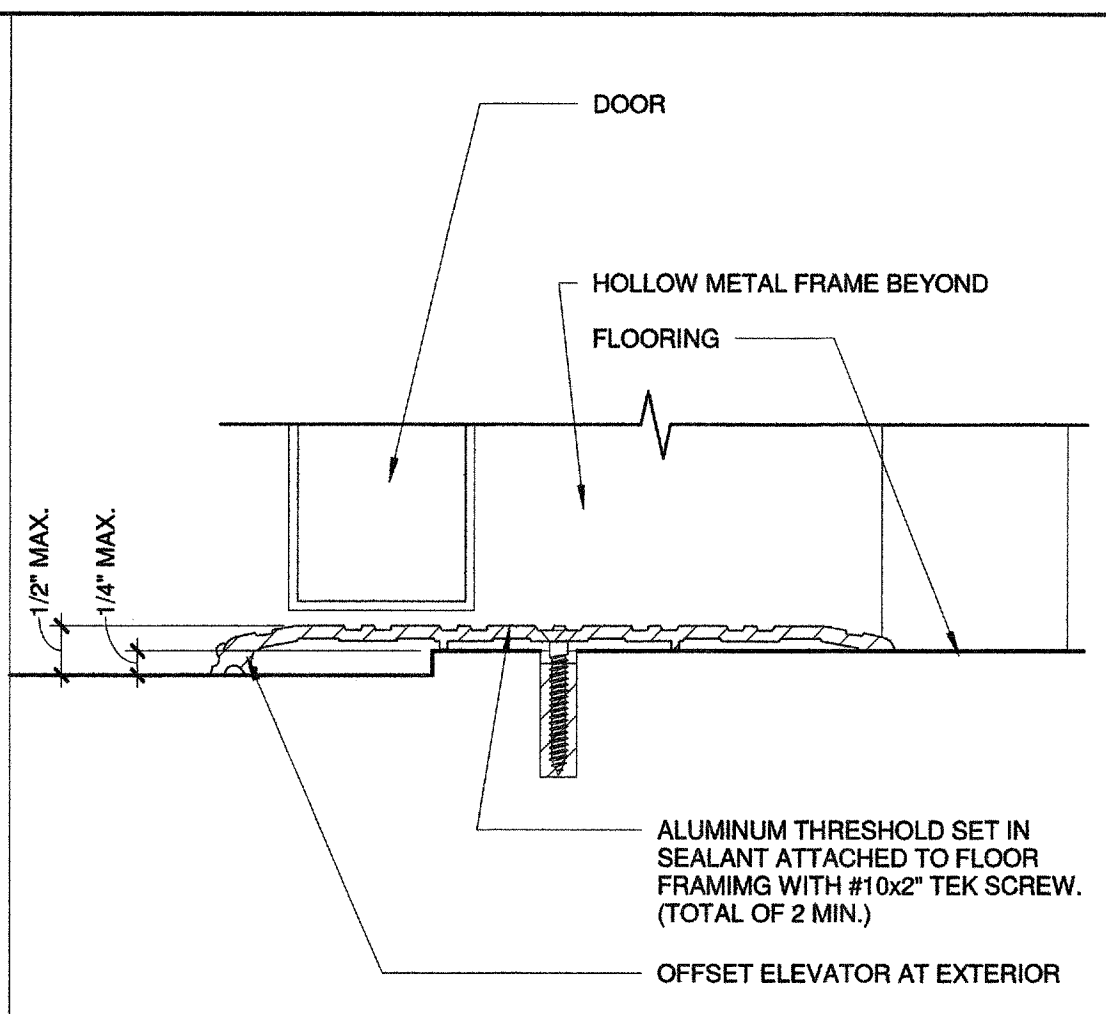


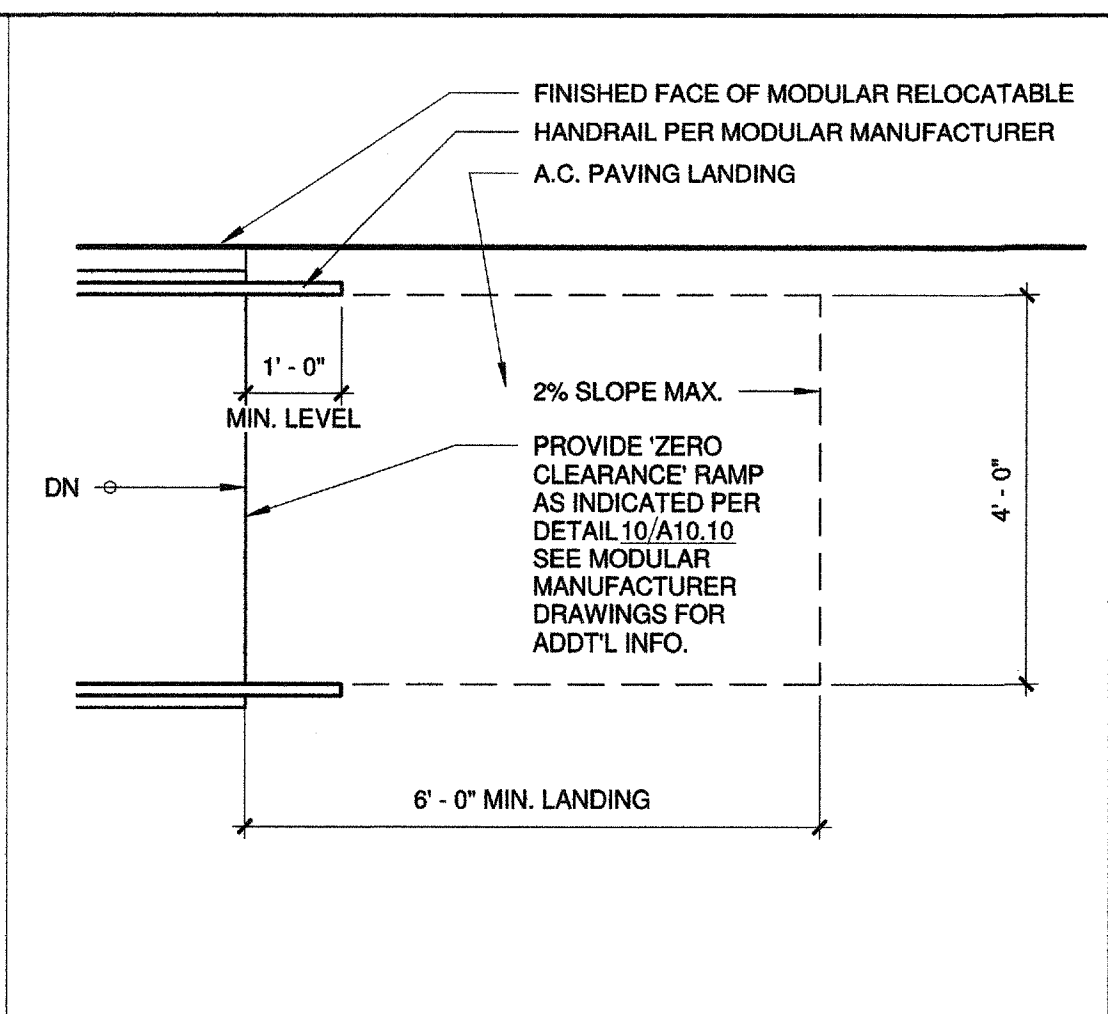
**1 CLOSURE PANEL** 1/4" = 1'-0"



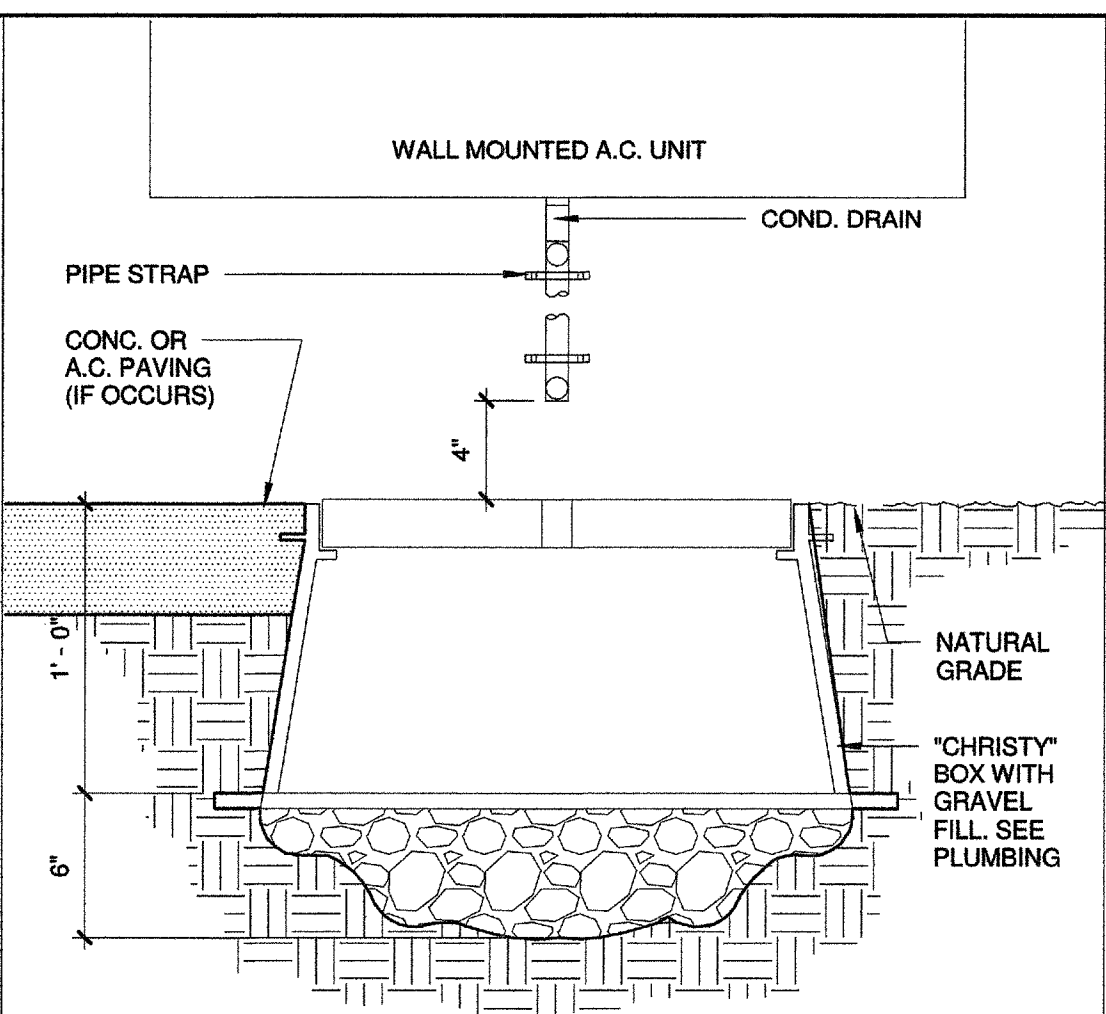
**2 PANEL PLAN** 1 1/2" = 1'-0"



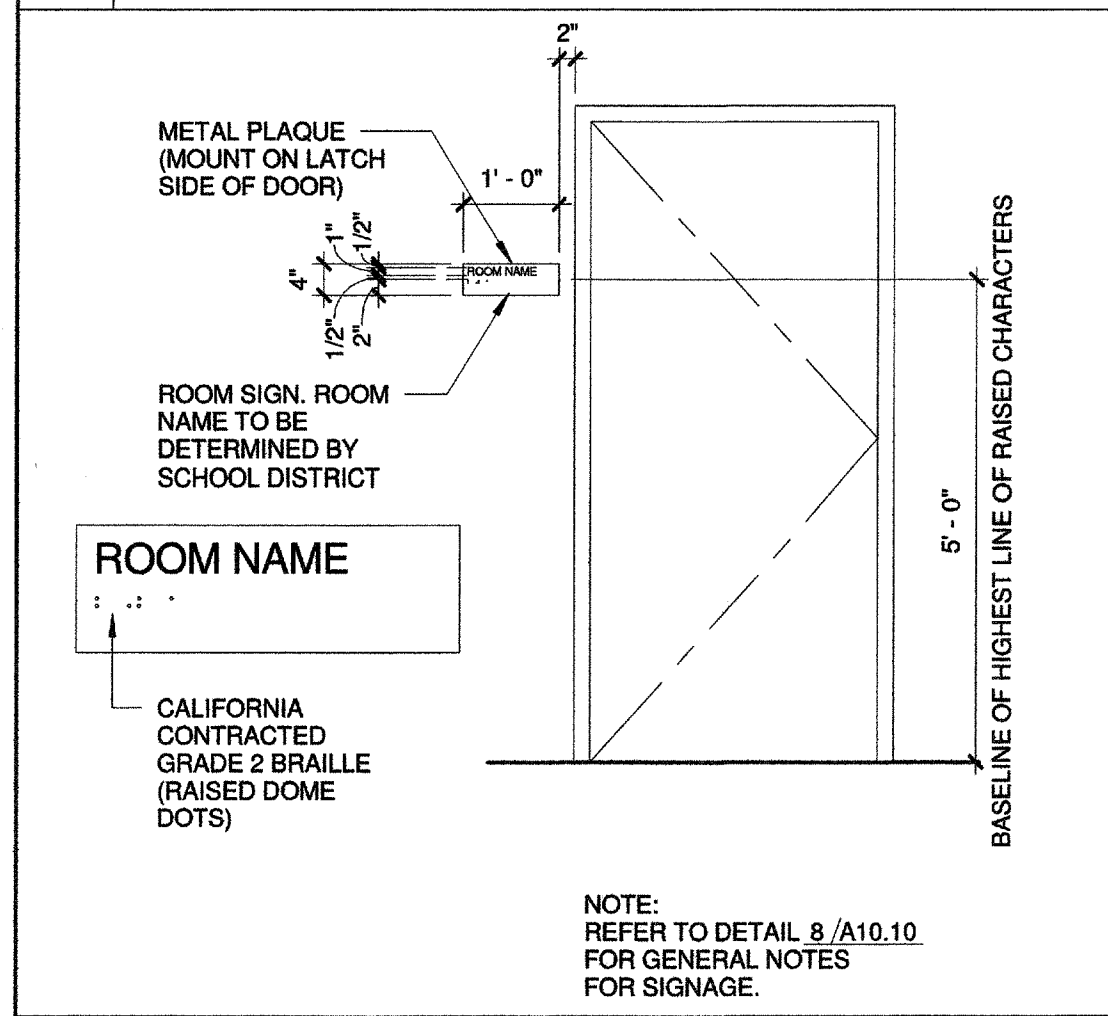
**3 THRESHOLD** 6" = 1'-0"



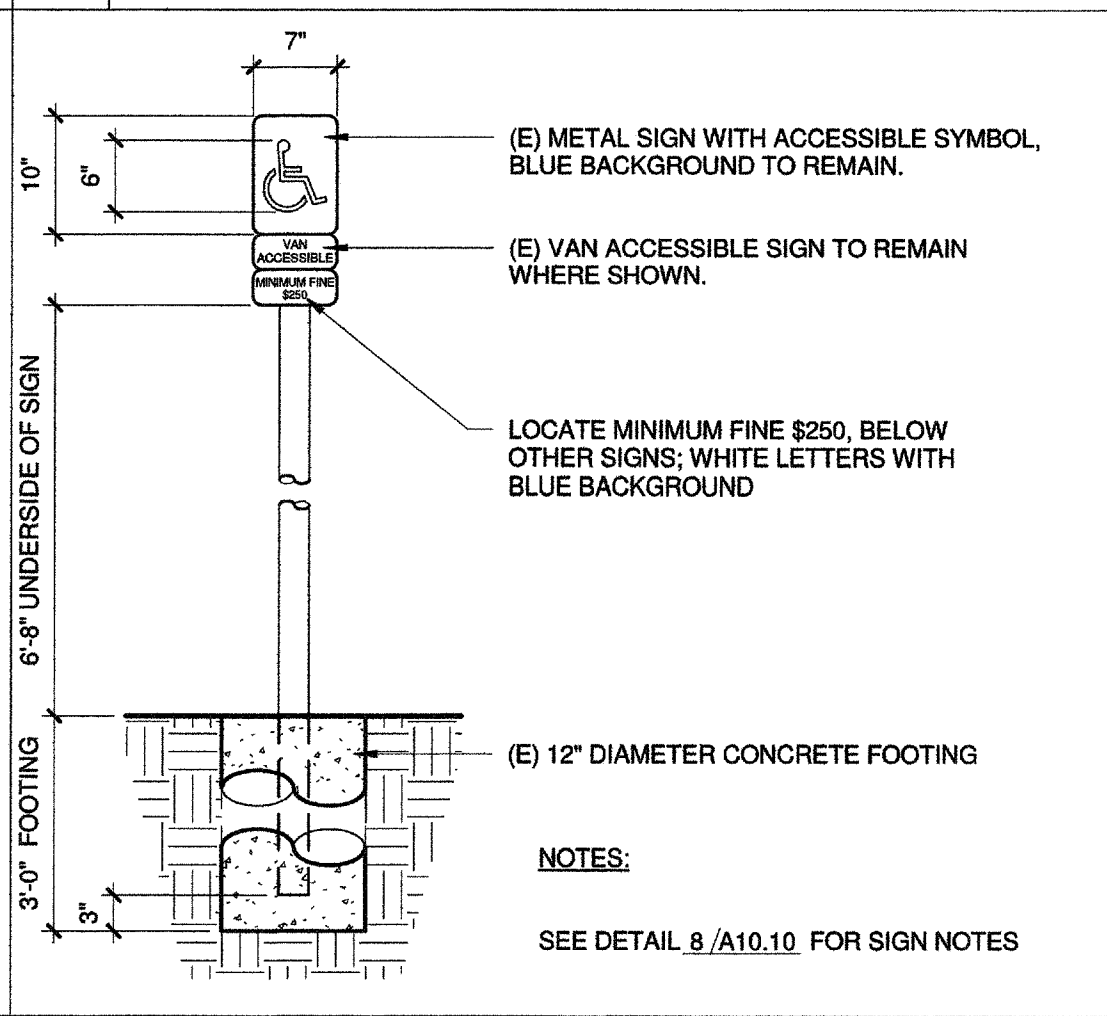
**4 RAMP LANDING** 1/2" = 1'-0"



**5 DRYWELL** 1 1/2" = 1'-0"



**6 ROOM SIGNAGE** 1/2" = 1'-0"



**7 ACCESSIBLE SIGNAGE** 3/4" = 1'-0"

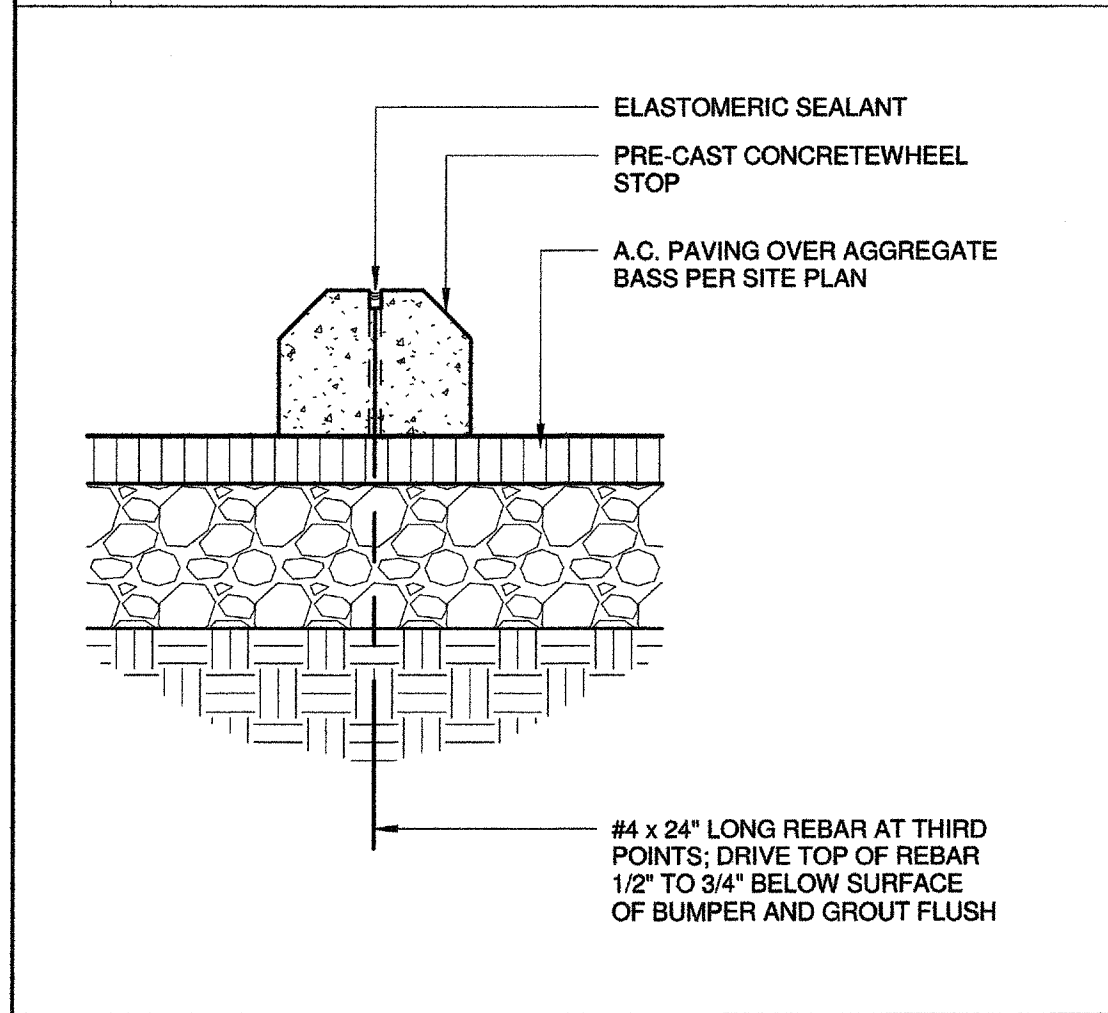
**NOTES APPLICABLE TO SIGNAGE DETAIL 7/A10.10**

- ALL SIGN SUBSTRATES SHALL BE 1/8" THICK REFLECTORIZED ALUMINUM.
- LETTERS AND GRAPHICS SHALL BE SILK SCREENED REFLECTORIZED ALUMINUM.
- ALL SIGNS SHALL BE MOUNTED WITH TAMPER PROOF SCREWS TO GALVANIZED 2" DIAMETER STANDARD STEEL PIPE. PIPE SHALL BE SHOP PRIMED AND PAINTED WITH TWO (2) COATS OF EXTERIOR ENAMEL.
- IN LIEU OF TAMPER PROOF SCREWS, SPOT WELDING END OF BOLT AFTER NUT INSTALLATION IS ACCEPTABLE.
- PROVIDE 3/4" RADIUS AT ALL SIGN CORNERS.
- SIGNS SHALL BE MOUNTED IN A CONSPICUOUS LOCATION.

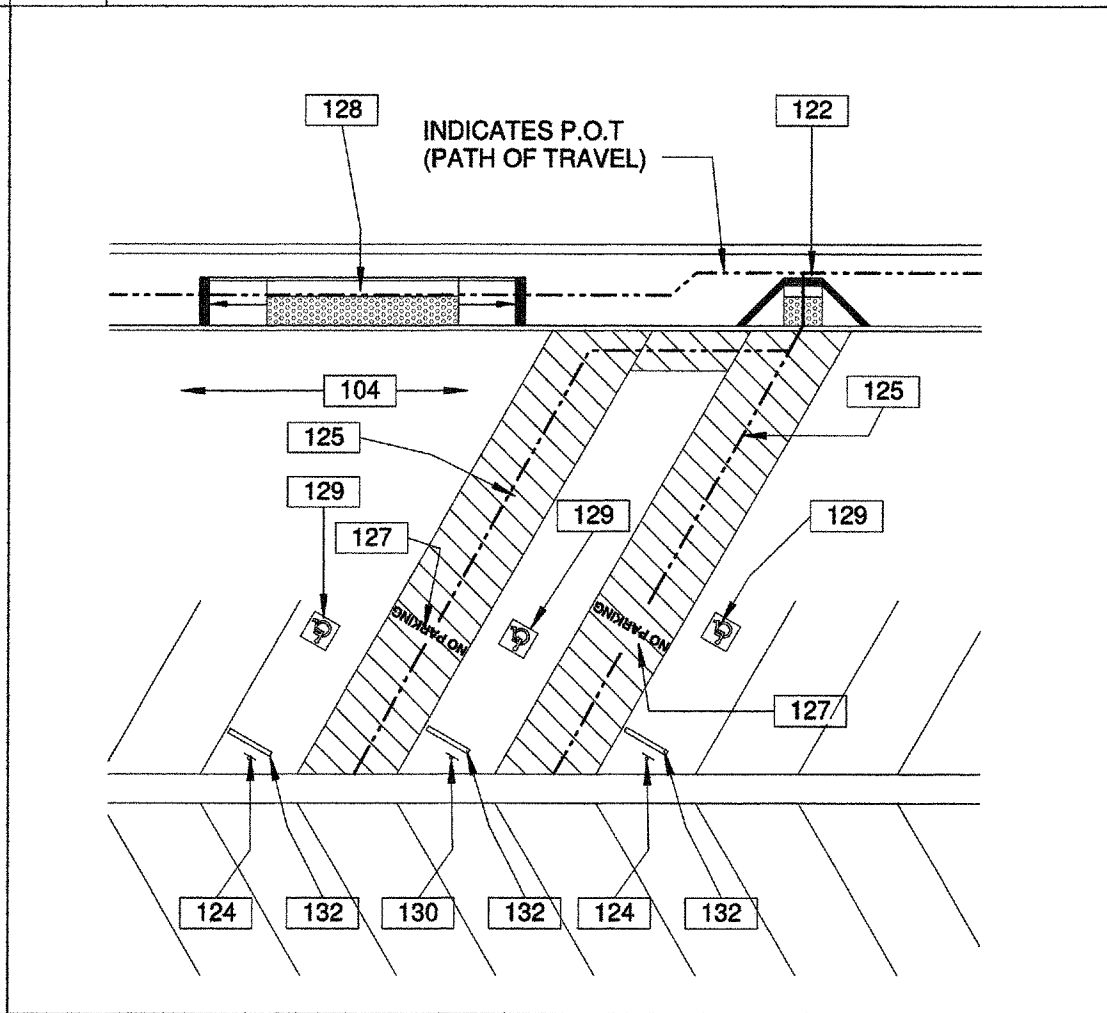
**NOTES APPLICABLE TO BLDG SIGNAGE DETAILS 6/A10.10**

- ALL SYMBOLS AND LETTERS TO BE RAISED 1/32" ABOVE SIGN/PLAQUE SURFACE TYP. (U.O.N.) AND SHALL BE AN INTEGRAL PART OF THE SIGN. CONTRAST BETWEEN SYMBOLS, LETTERS, CHARACTERS AND BACKGROUND MUST BE 70% MIN.
- ALL SIGNS TO HAVE A COLOR WHICH CONTRASTS 70% MIN. WITH DOOR COLOR.
- ALL PLAQUES TO HAVE A COLOR WHICH CONTRASTS WITH THE WALL ADJACENT TO THE LATCH SIDE OF THE DOOR. REFER TO ABOVE DETAIL ACCESSIBILITY SIGN(S) LOCATION AND ELEVATION FOR SIGN/PLAQUE LOCATION INFORMATION.
- CALIFORNIA GRADE 2 BRAILLE DOTS SHALL BE 1/10" (2.54mm) ON CENTERS IN EACH CELL WITH 2/10" (5.08 mm) SPACE BETWEEN CELLS DOTS SHALL BE RAISED A MIN. OF 1/40" (0.635 mm) ABOVE THE BACKGROUND.
- ALL SIGNS AND IDENTIFICATION SHALL COMPLY WITH TITLE 24, SECTION 1117B.5 THRU 1117B.5.10.

**8 SIGNAGE NOTES** 1/8" = 1'-0"



**11 WHEELSTOP** 1 1/2" = 1'-0"



**12 ENLARGED (E) PARKING** 1" = 20'-0"

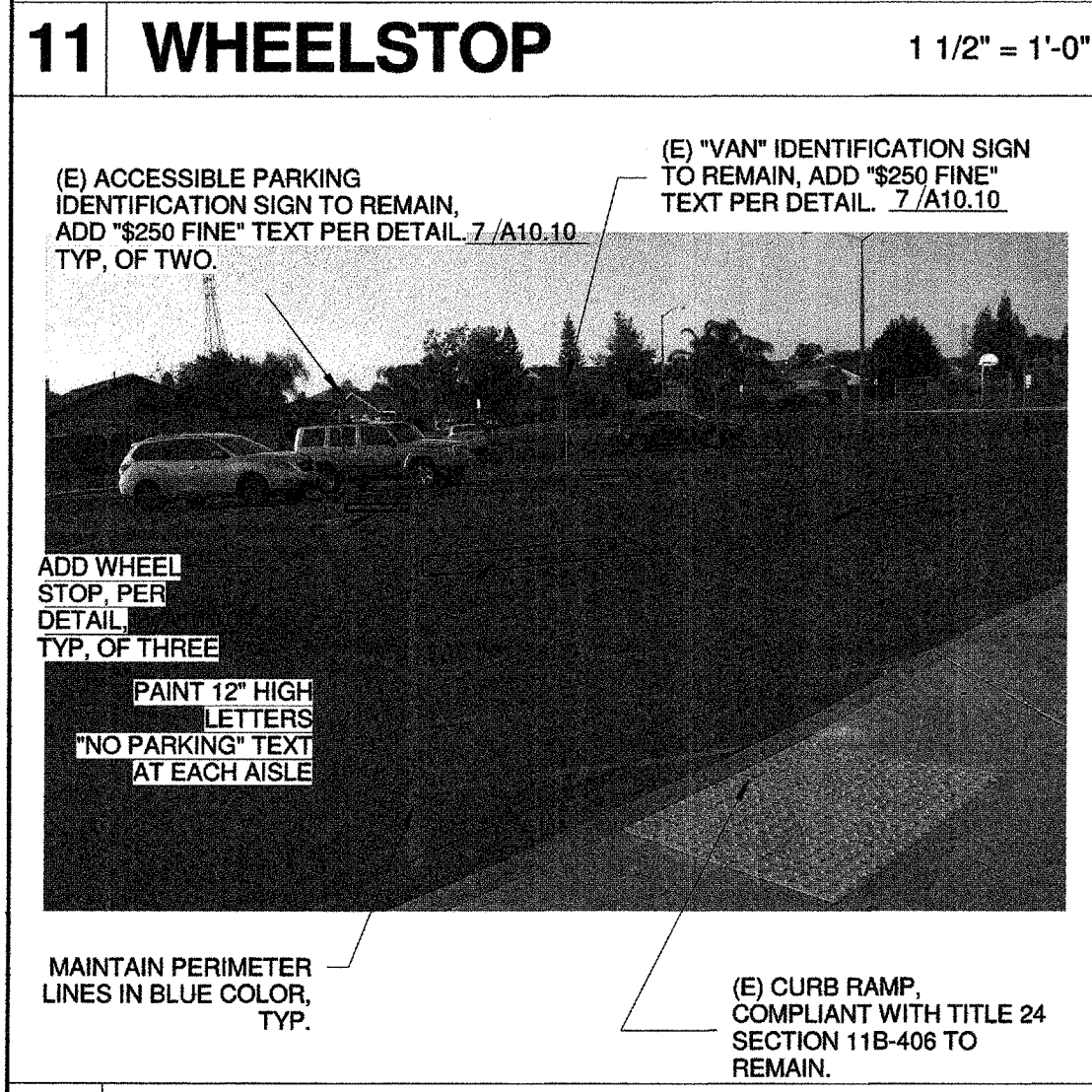
**100 - KEYNOTES**

- (E) ASPHALT PAVING TO REMAIN.
- (E) CURB RAMP, COMPLIANT WITH TITLE 24 SECTION 11B-406 TO REMAIN.
- (E) ACCESSIBLE PARKING SIGNS, TO REMAIN. PROVIDE "MIN. FINE \$250" SIGNS PER DETAIL 7/A10.10.
- (E) 4" WIDE BLUE COLOR HATCH AND PERIMETER LINES AS SHOWN, TO REMAIN.
- PAINT 12" HIGH "NO PARKING" TEXT AT AISLE AS SHOWN.
- (E) PARALLEL CURB RAMP COMPLIANT WITH TITLE 24 SECTION 11B-406 TO REMAIN.
- (E) 36"x36" INTERNATIONAL SYMBOL OF ACCESSIBILITY TO REMAIN.
- (E) "VAN" IDENTIFICATION SIGN TO REMAIN, ADD "\$250 FINE" TEXT PER DETAIL 7/A10.10.
- ADD WHEEL STOP, PER DETAIL 11/A10.10.

**NOTES:**

- REFER TO DETAILS 13, 14 & 15 THIS SHEET, FOR PARKING SPACES RELATED VIEWS.
- EXISTING ACCESSIBLE PARKING APPROVED UNDER DSA # 03-108679

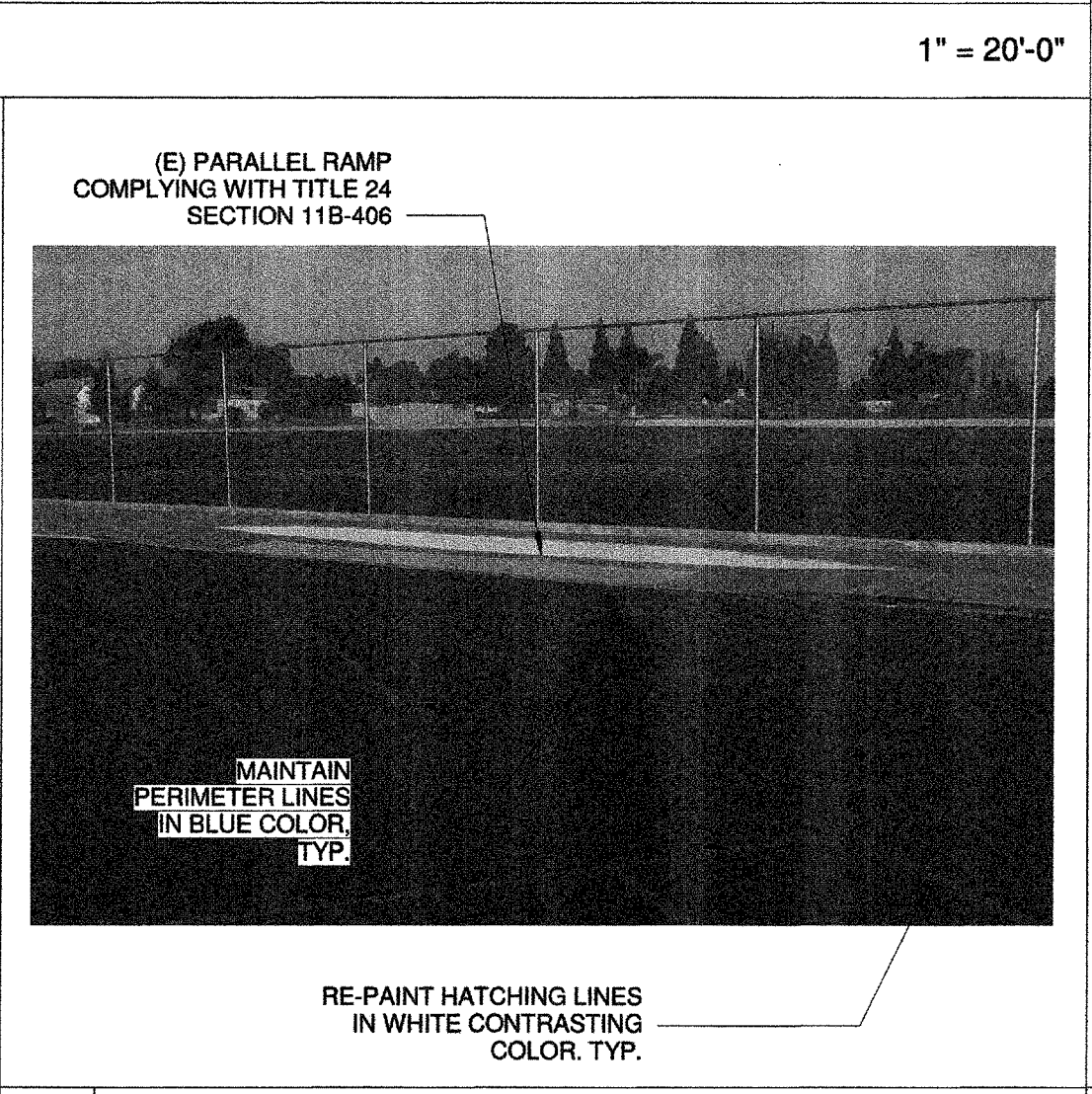
**100 - KEYNOTES**



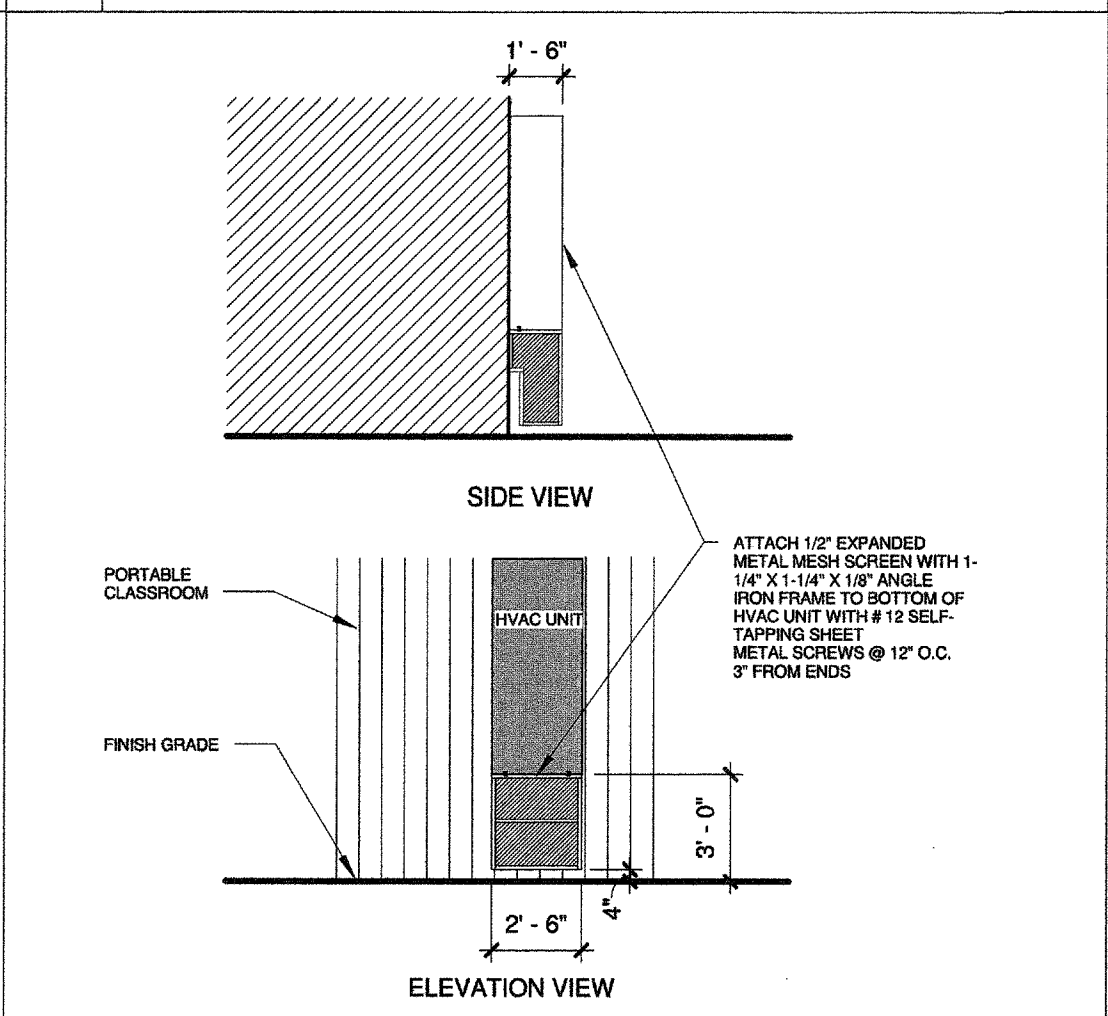
**13 (E) ACCESS PARKING** N.T.S



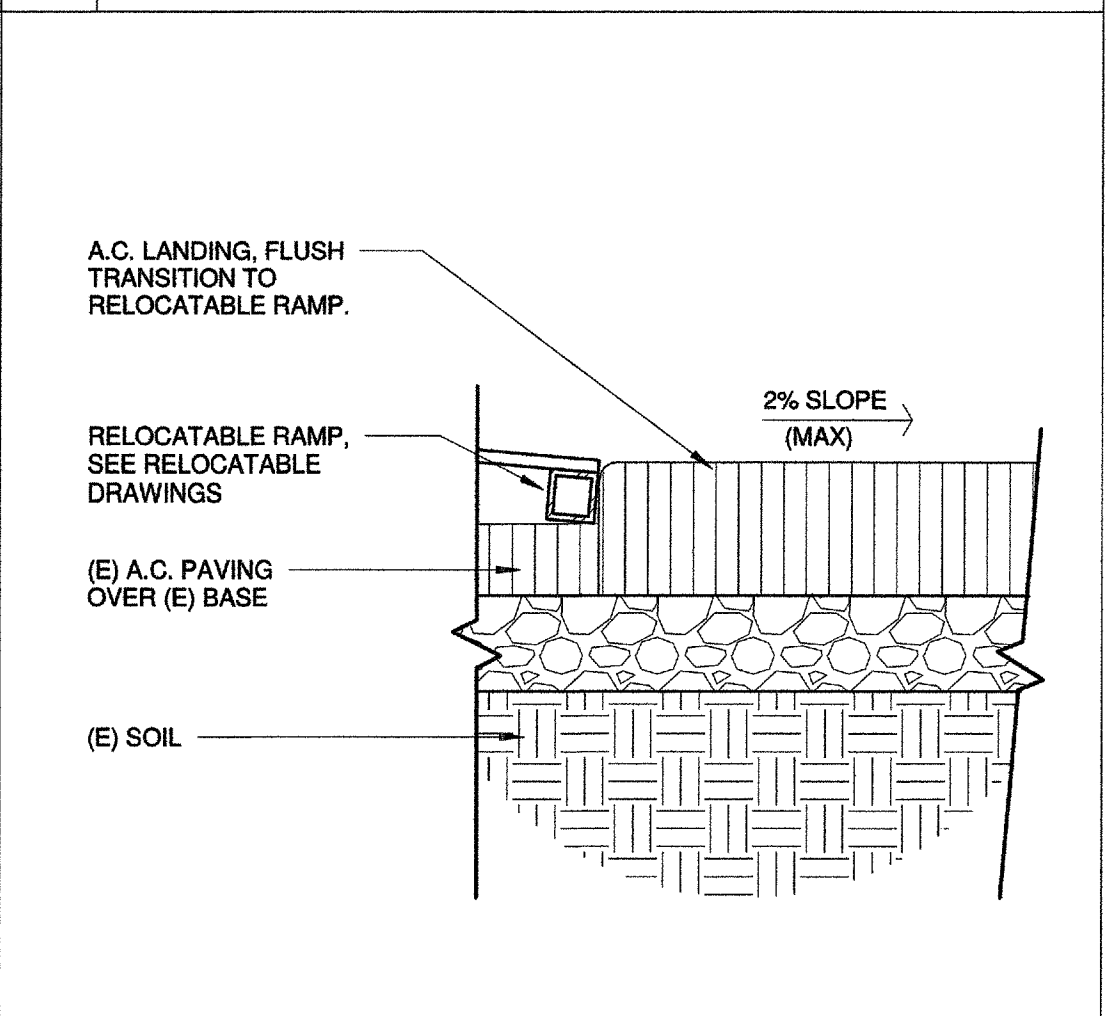
**14 (E) VAN SPACE** N.T.S



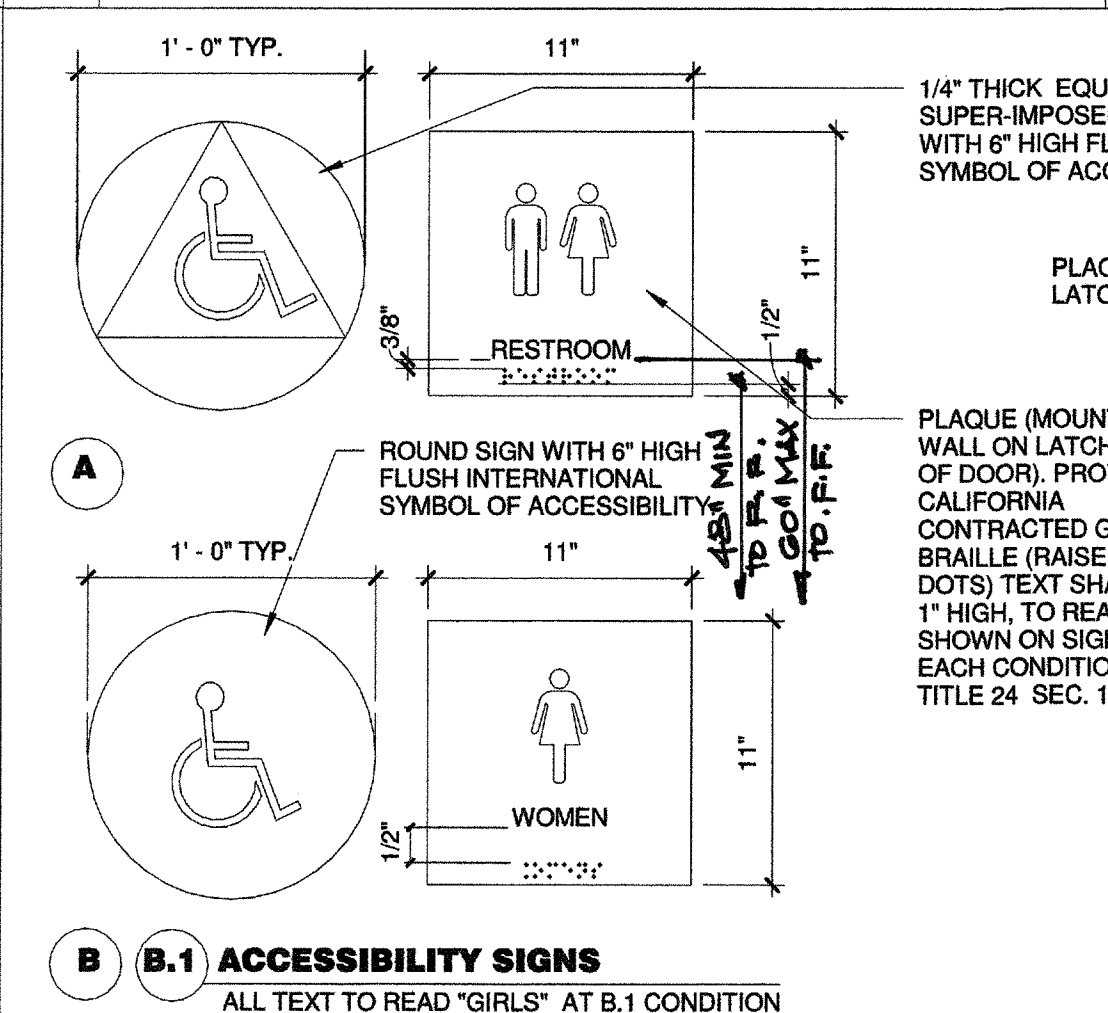
**15 (E) PARALLEL RAMP** N.T.S



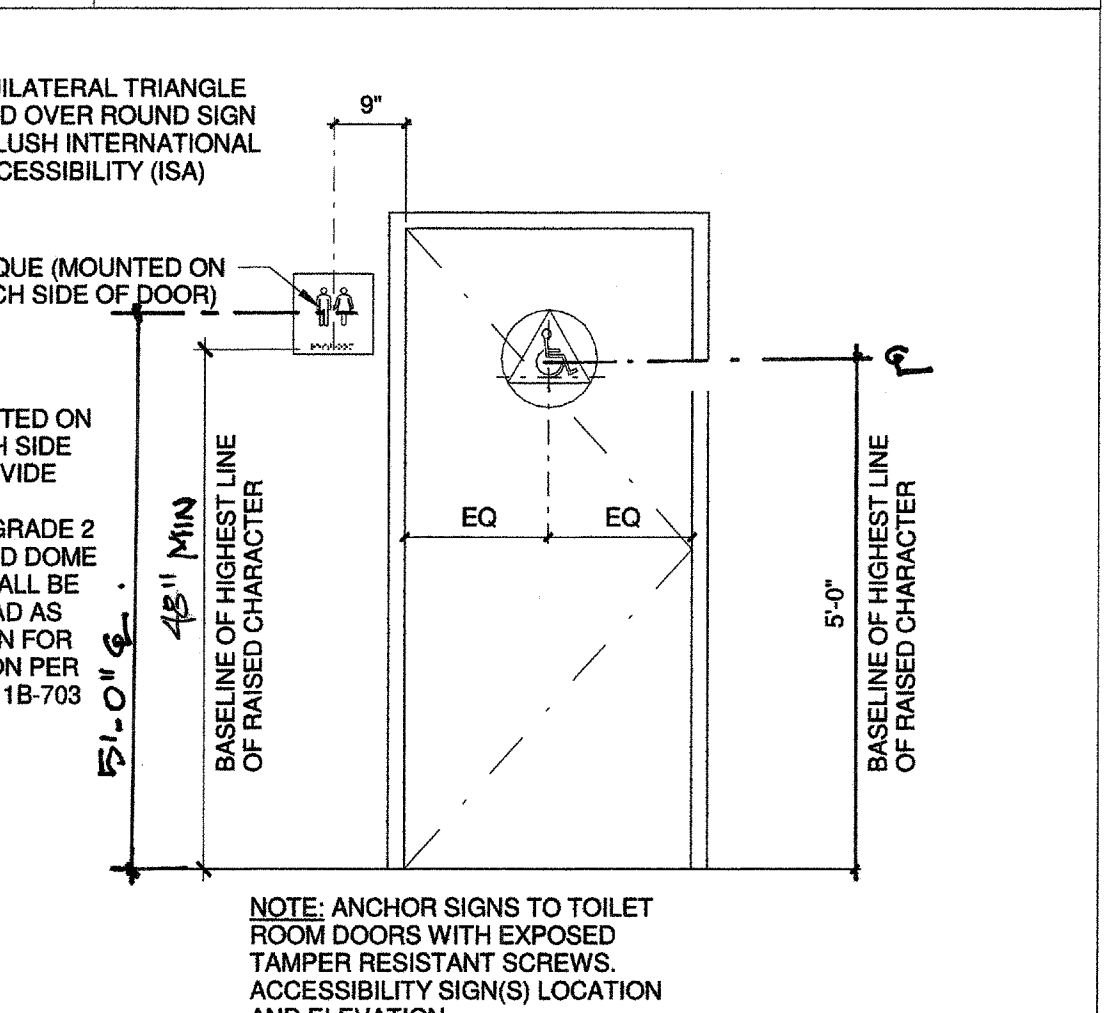
**9 MESH SCREEN** 3/16" = 1'-0"



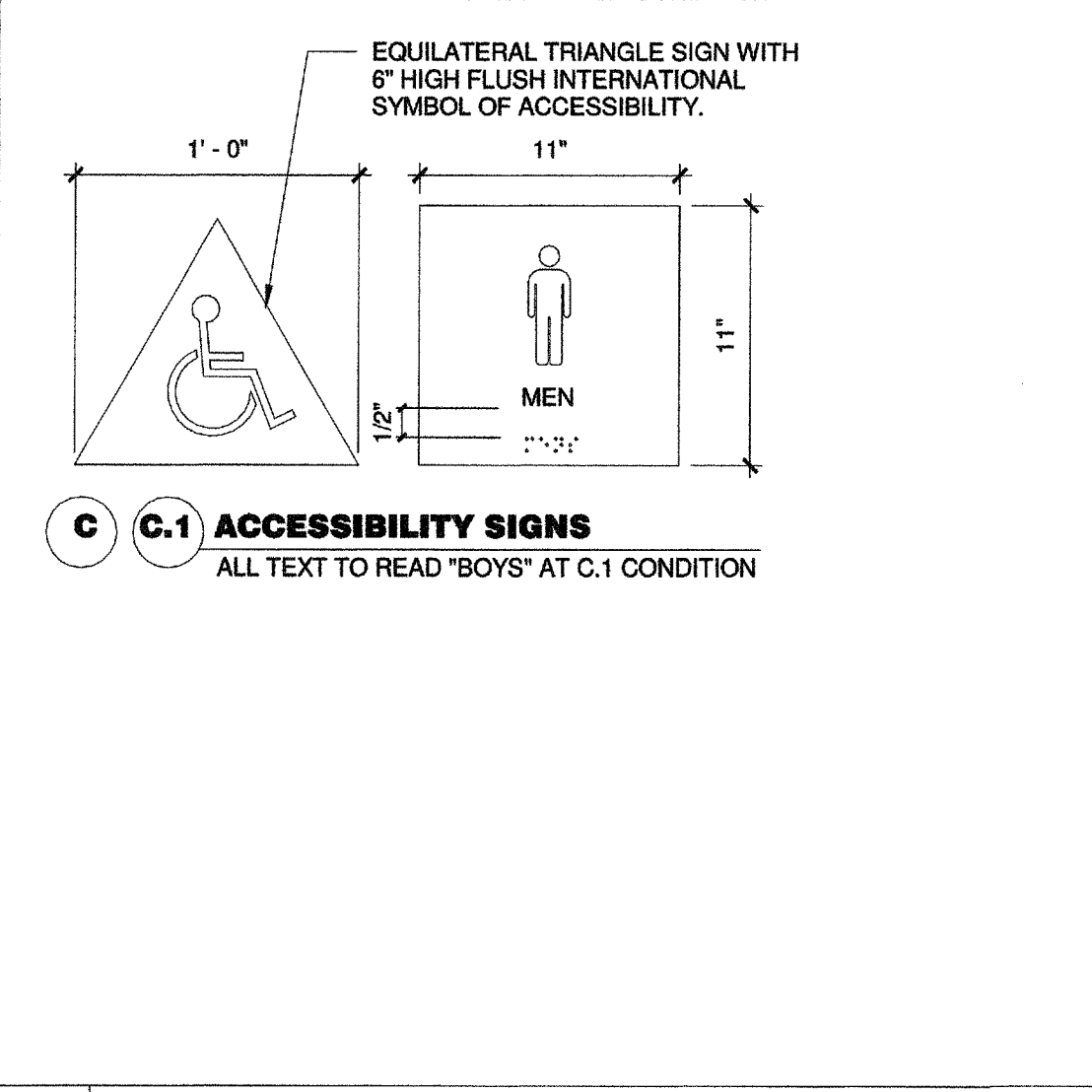
**10 A.C. TO RAMP** 1 1/2" = 1'-0"



**9B.1 ACCESSIBILITY SIGNS**



**9C.1 ACCESSIBILITY SIGNS**



**16 ACCESSIBLE SIGNAGE** 1 1/2" = 1'-0"

**GENERAL NOTES**

- ALL SYMBOLS AND LETTERS TO BE RAISED 1/32" ABOVE SIGN/PLAQUE SURFACE TYP. (U.O.N.) AND SHALL BE AN INTEGRAL PART OF THE SIGN.
- CONTRAST BETWEEN SYMBOLS, LETTERS, CHARACTERS AND BACKGROUND MUST BE 70% MIN.
- ALL SIGNS TO HAVE A COLOR WHICH CONTRASTS 70% MIN. WITH DOOR COLOR.
- ALL PLAQUES TO HAVE A COLOR WHICH CONTRASTS WITH THE WALL ADJACENT TO THE LATCH SIDE OF THE DOOR.
- REFER TO SIGN 'A' THIS DETAIL FOR TYPICAL DIMENSIONS AND NOTES.
- REFER TO ABOVE DETAIL ACCESSIBILITY SIGN(S) LOCATION AND ELEVATION FOR SIGN/PLAQUE LOCATION INFORMATION.
- CALIFORNIA GRADE 2 BRAILLE DOTS SHALL BE 1/10" (2.54 mm) ON CENTERS IN EACH CELL WITH 2/10" (5.08 mm) SPACE BETWEEN CELLS DOTS SHALL BE RAISED A MIN. OF 1/40" (0.635 mm) ABOVE THE BACKGROUND.
- ALL SIGNS AND IDENTIFICATION SHALL COMPLY WITH TITLE 24, SECTION 11B-703
- WHERE GLAZING OCCURS ADJACENT TO STRIKE SIDE OF DOOR, PROVIDE ADHERE SIGN TO GLAZING.
- AT DOOR PAIRS, PLACE TACTILE ROOM ID AND EXIT SIGNS TO RIGHT OF DOORS.

PRIME CONSULTANT

**IBI** ARCHITECTURE PLANNING

San Luis Obispo  
4119 Broad Street, Suite 210  
San Luis Obispo, CA 93401  
805.546.0433 fax: 805.546.0504

SEAL

LICENSED ARCHITECT  
RICHARD M. IBI  
NO. C18079  
EXPIRES 10/17  
STATE OF CALIFORNIA

COPYRIGHT: Any reproduction or distribution for any purpose other than authorized by IBI Group is forbidden.

COPYRIGHT 2016 IBI GROUP

REVISIONS

NO.	DATE	APPRD.	DESCRIPTION

CONSULTANT

AGENCY INFORMATION:

AGENCY TRACKING NO. 63321-154  
FILE NO. 15-6

IDENTIFICATION STAMP  
DIV. OF THE STATE ARCHITECT  
OFFICE OF REGULATION SERVICES  
03-17035  
AC, ALL, FLS, SS  
DATE 6/28/2016

BAKERSFIELD CITY SCHOOL DISTRICT

CHIPMAN JR. HIGH SCHOOL  
RELOCATABLES (2)

2905 EISSLER ST.  
BAKERSFIELD, CA 93306

OPSC or SHPD PROJ. NO:

PROJECT NO: 14146.000  
DRAWN BY: AJB  
CHK'D BY: RM  
ISSUE DATE: 04/27/2016

**DETAILS**

**A10.10**

SHEET NUMBER

CONSTRUCTION DOCUMENTS

PLOT DATE: 4/22/2016 10:19:29 AM J:\14146\_B0\_ChipmanJrHS3 Drawings\Bakersfield\A10.10.dwg - Chipman.rvt