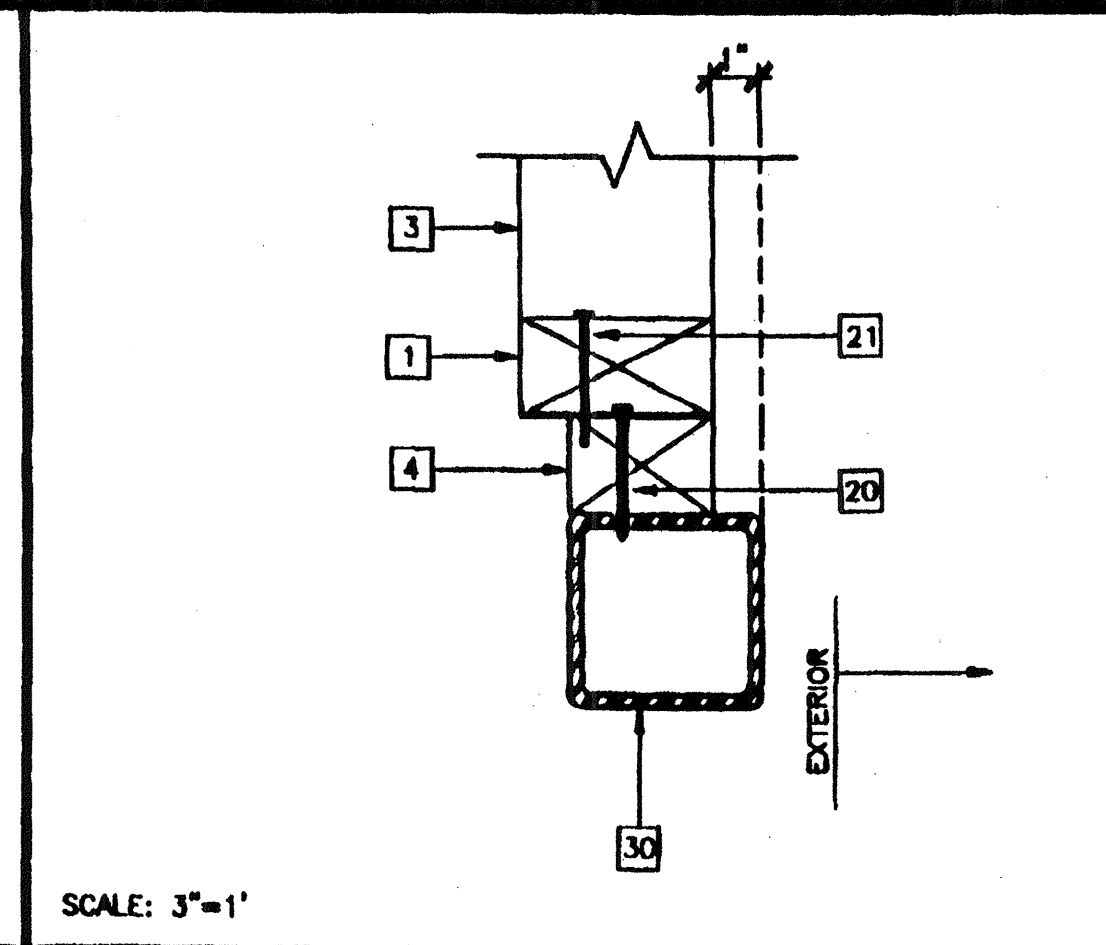
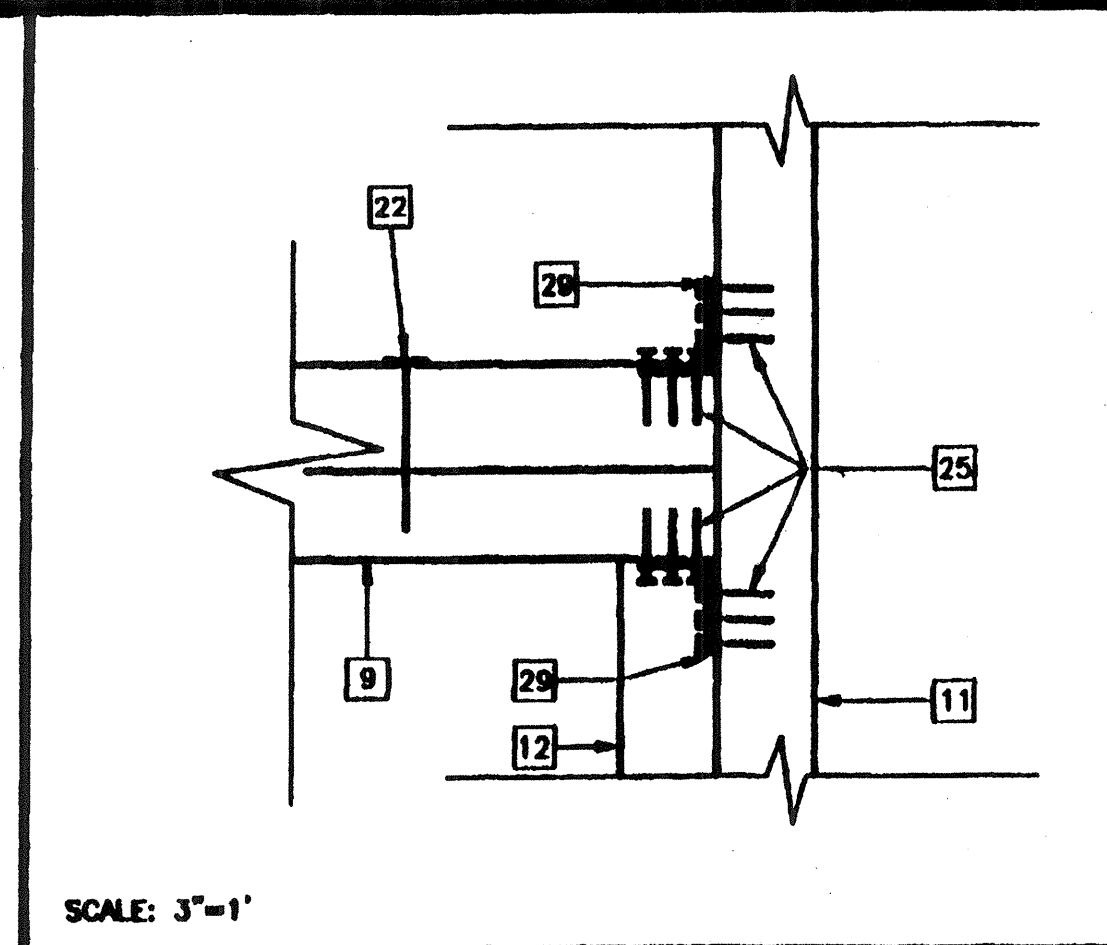
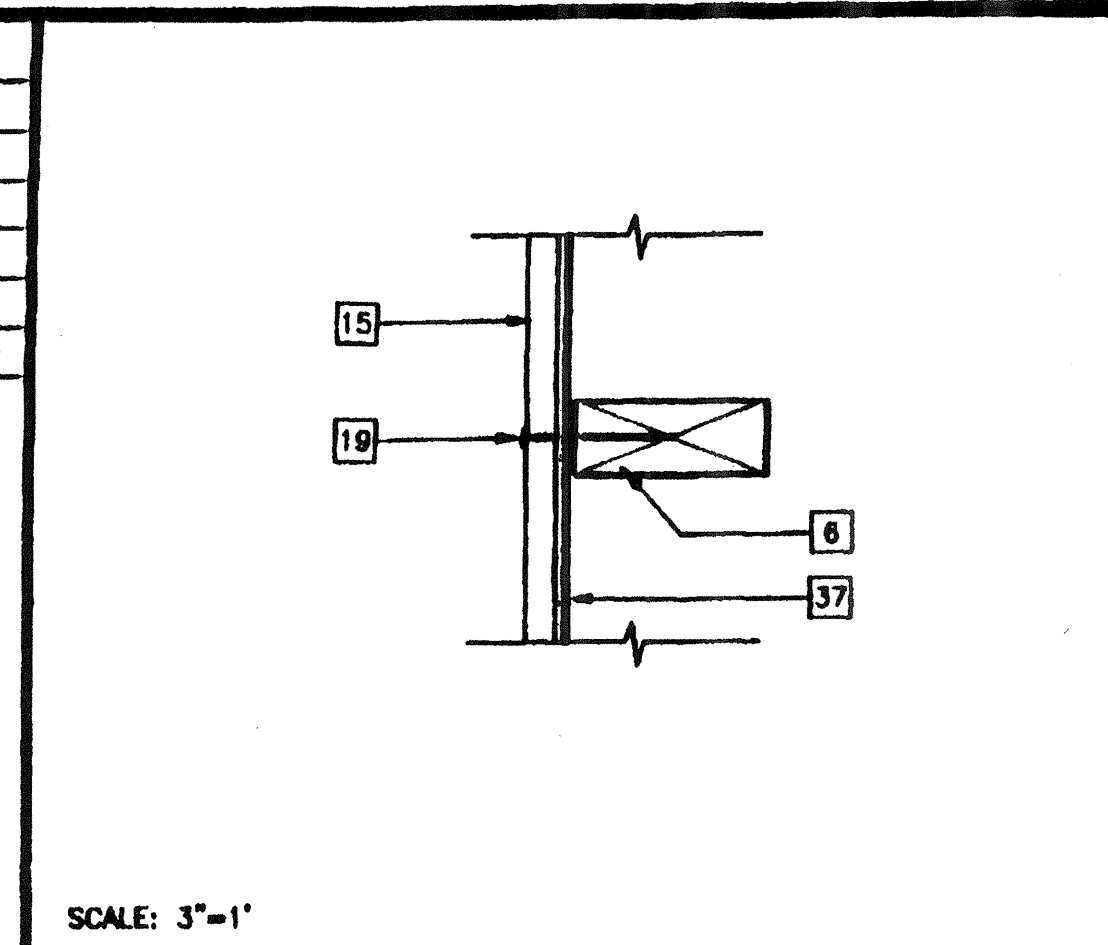


NOTE:
ALL NAILS SHALL BE BOX NAILS UNLESS OTHERWISE NOTED

CONNECTION	NAILING ¹
1. JOIST TO SILL OR GIRDER, TOENAIL	3-8d
2. BRIDGING TO JOIST, TOENAIL EACH END	2-8d
3. 1"x8" SUBFLOOR OR LESS TO EACH JOIST, FACE NAIL	2-8d
4. WIDER THAN 1"x8" SUBFLOOR TO EACH JOIST, FACE NAIL	3-8d
5. 2" SUBFLOOR TO JOIST OR GIRDER, BLIND AND FACE NAIL	2-16d
6. SOLE PLATE TO JOIST OR BLOCKING, TYPICAL FACE NAIL	16d AT 16" OC
SOLE PLATE TO JOIST OR BLOCKING, AT BRACED WALL PANELS	3-16d PER 16"
7. TOP PLATE TO STUD, END NAIL	2-16d
8. STUD TO SOLE PLATE	4-8d, TOENAIL OR 2-16d, END NAIL
9. DOUBLE STUDS, FACE NAIL	16d AT 24" OC
10. DOUBLE TOP PLATES, TYPICAL FACE NAIL	16d AT 16" OC
DOUBLE TOP PLATES, LAP SPLICE	8-16d
11. BLOCKING BETWEEN JOISTS OR RAFTERS TO TOP PLATE, TOENAIL	3-8d
12. RM JOIST TO TOP PLATE, TOENAIL	8d AT 6" OC
13. TOP PLATES, LAPS AND INTERSECTIONS, FACE NAIL	2-16d
14. CONTINUOUS HEADER, TWO PIECES.	16d AT 16" OC ALONG EACH EDGE
15. CEILING JOIST TO PLATE, TOENAIL	3-8d
16. CONTINUOUS HEADER TO STUD, TOENAIL	4-8d
17. CEILING JOISTS, LAPS OVER PARTITIONS, FACE NAIL	3-16d
18. CEILING JOISTS, TO PARALLEL RAFTERS, FACE NAIL	3-16d
19. RAFTER TO PLATE, TOENAIL	3-8d
20. 1" BRACE TO EACH STUD AND PLATE, FACE NAIL	2-8d
21. 1"x8" OR LESS SHEATHING TO EACH BEARING, FACE NAIL	2-8d
22. WIDER THAN 1"x8" SHEATHING TO EACH BEARING, FACE NAIL	3-8d
23. BUILT-UP CORNER STUDS	16d AT 24" OC
24. BUILT-UP GIRDER AND BEAMS.	20d AT 32" OC AT TOP AND BOTTOM AND STAGGERED 2-20d AT ENDS AND AT EACH SPLICE
25. 2" PLANKS	2-16d AT EACH BEARING

OPENING	HEADER	SILL	JAMB	HEIGHT	WIDTH
3068	(2)2"x4"	N/A	(2)2"x4"	81 1/4"	36"
8040	(3)2"x4"	(2)2"x4"	(3)2"x4"	47 5/8"	95 3/4"

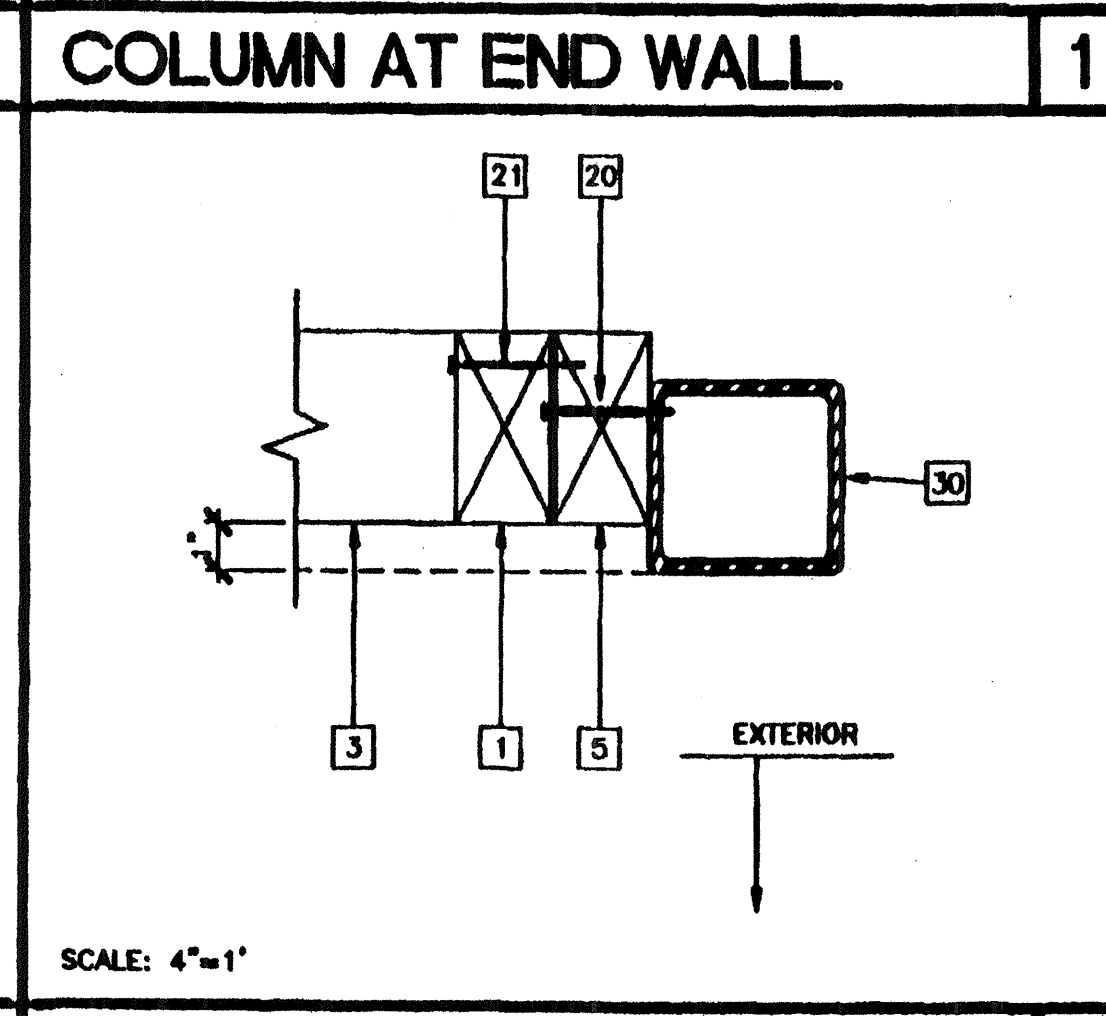
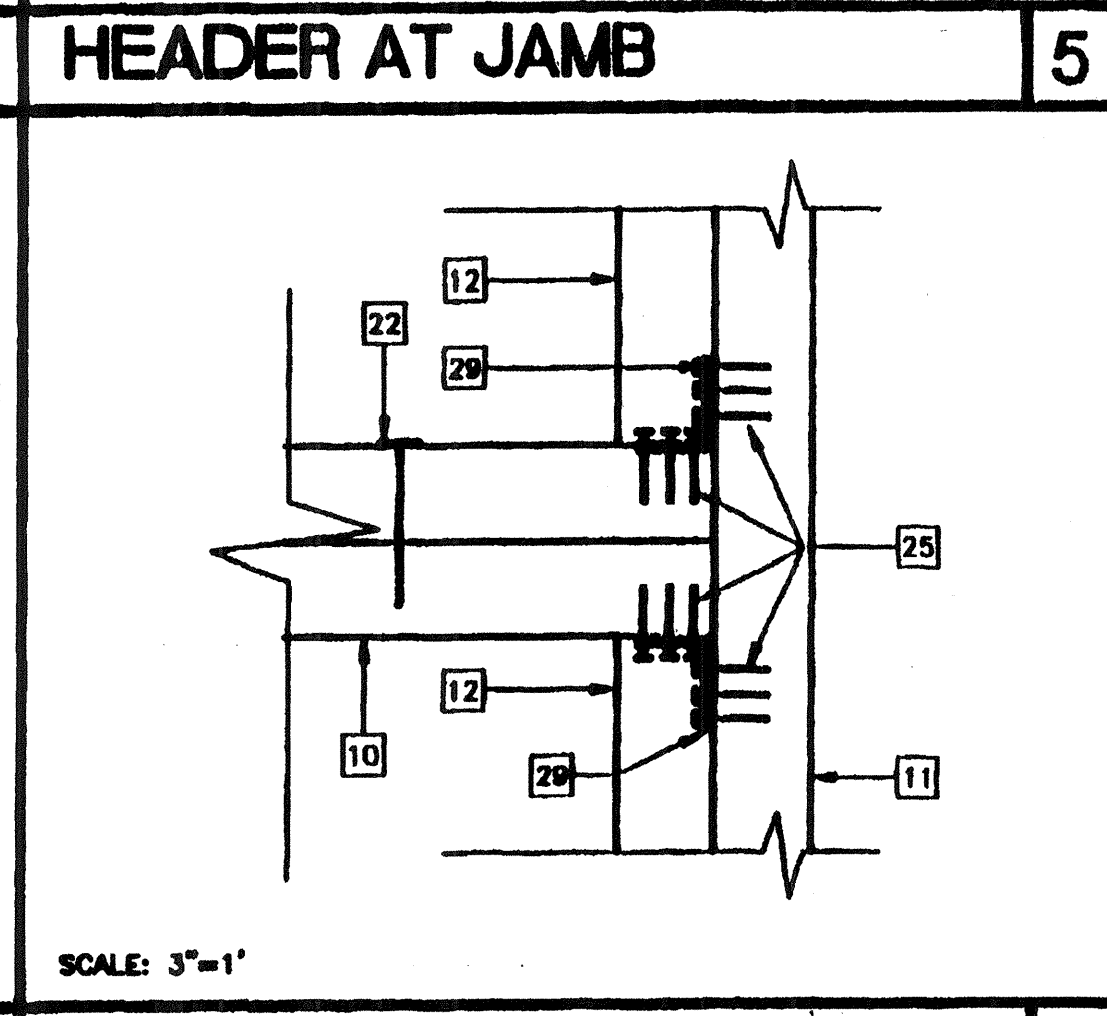
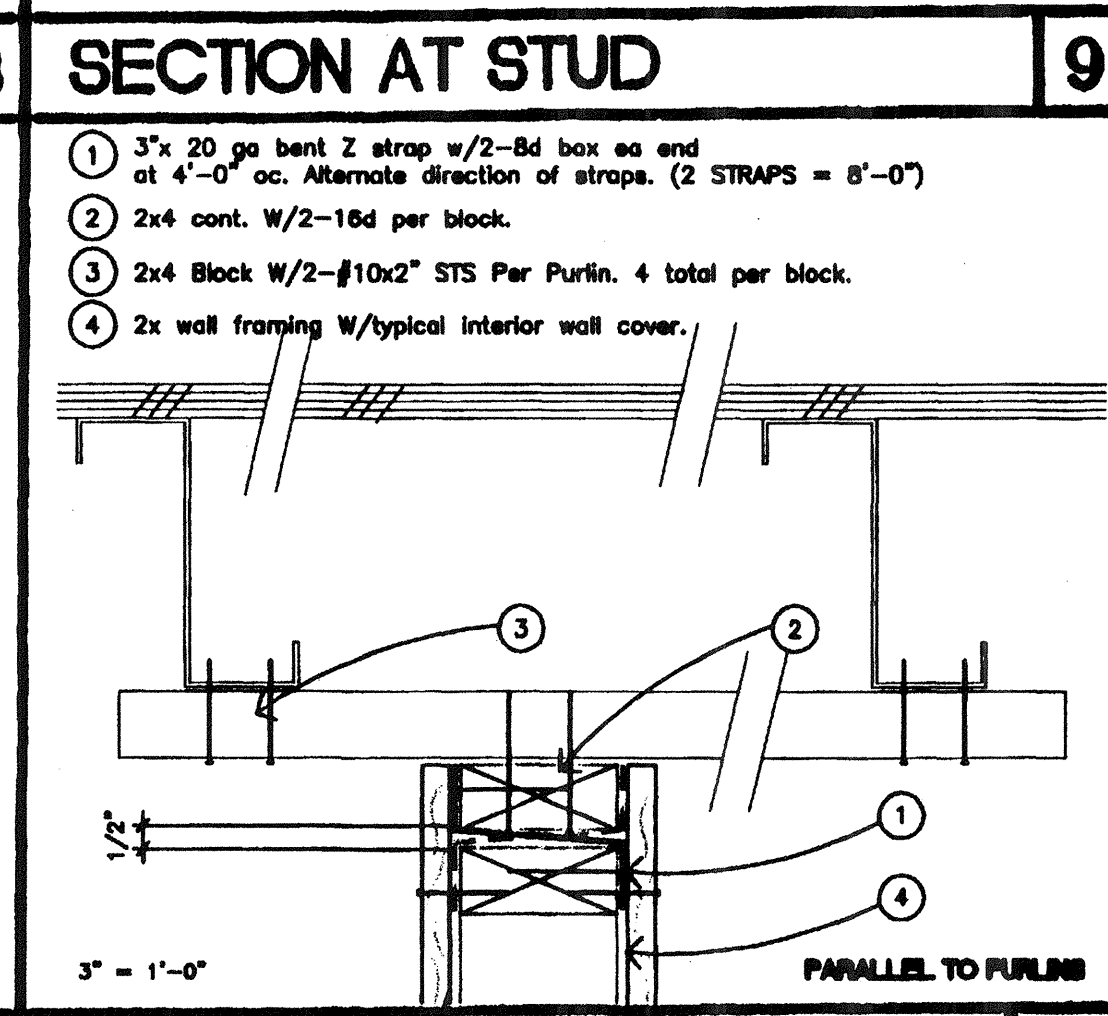
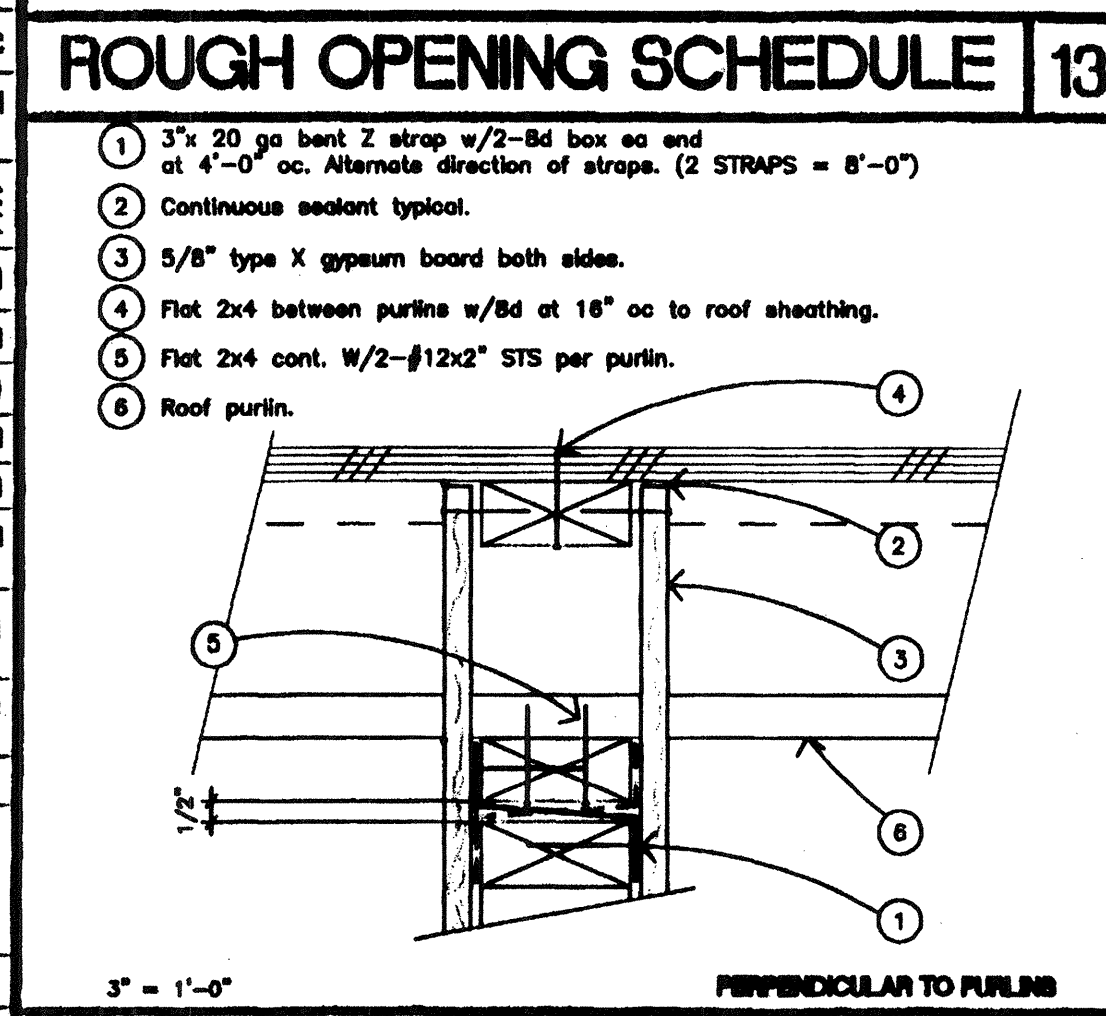
* = 4 JAMB STUDS FOR 80 MPH DESIGN WIND LOAD



- KEY NOTES**
- 2"x4" END PLATE
 - 2"x4" TOP PLATE
 - 2"x4" FLOOR SILL PLATE
 - 2"x NAILER AT END WALL
 - 2"x4" NAILER AT SIDE WALL
 - 2"x4" AT 16" OC
 - DOUBLE 2"x4" STUDS AT PLYWOOD EDGES
 - 2"x4" BLOCKING
 - HEADER - 13/54.02
 - WINDOW SILL - 13/54.02
 - FULL HEIGHT JAMB STUDS - 13/54.02
 - 2"x4" TRIMMER STUD
 - 2"x4" DOUBLE TOP PLATE AT INTERIOR PARTITIONS
 - 2"x4" BRACE AT 8'-0" OC MAX AT 45" MAX (STAGGERED)
 - EXTERIOR SHEATHING NAIL WITH 8d GALVANIZED BOX NAILS AT 6" OC EDGE NAILING, 12" OC FIELD NAILING
 - FLOOR SHEATHING
 - ROOF SHEATHING
 - EDGE NAILING 8d ELECTRO GALVANIZED AT 6" OC
 - FIELD NAILING 8d ELECTRO GALVANIZED AT 12" OC
 - #10 STMS AT 24" OC OR 0.1456 SHOT PIN AT 24" OC
 - 16d AT 24" OC
 - 16d NAIL AT 16" OC
 - 16d BOX NAILS AT 8" OC
 - 10 STMS AT 16" OC OR AEROSMITH AKN 0.144 DRIVE PIN AT 16" OC
 - 8d x 1 1/2" NAILS
 - 1/4" DIA x 1 1/2" EYE LAG SCREW AT 8'-0" OC (2" EMBEDMENT)
 - #12x2" TYPE A HEX HEAD SCREWS WITH WASHERS TYPICAL FOR 3
 - A35 CLIP BOTH SIDES OF BRACE TO TOP PLATE
 - A34 CLIPS AT HEADER AND SILL TO FULL HEIGHT STUDS AND FULL HEIGHT STUDS TO TOP AND BOTTOM PLATES
 - TUBE STEEL COLUMN (STR)
 - ROOF BEAM OR HEADER (STR)
 - FLOOR BEAM OR HEADER (STR)
 - ROOF PURLIN (STR)
 - 12 GA BRACE WIRES ATTACH TO EYE LAG SCREWS AND TO ROOF PURLINS AT 8'-0" OC - ENDS TO HAVE 4 TIGHT WRAPS IN 1 1/2" (STAGGERED) LAP JOINT
 - 2" FLASHING
 - WATERPROOF MEMBRANE
 - EDGE NAIL AT FLOOR BEAM OR HEADER - #10x1 3/4" SELF TAPPING FLAT HEAD SCREWS AT 6" OC
 - EDGE NAIL 16d BOX NAIL AT 24" OC
 - SEALANT TYP (SEE SPECS)
 - 2"x4" FLAT NAILER WITH 6d BOX NAIL AT 16" OC
 - 2"x4" STUD WITH 5/8" TYPE 'X' GYP BOARD BOTH SIDES TO ROOF. TRIM TO CLEAR PURLINS/BRACE, CAULK AT ROOF
 - STC WITH 2-8d TOP PLATE AND 1-8d IN SLOT
 - STC BENT FLAT WITH 2-8d TO TOP WALL PLATE AND 1-8d IN SLOT AT 48" OC ALTERNATE SIDES
 - 2"x4" FLAT WITH 2-#12x2" STS EACH PURLIN
 - 2"x4" FLAT WITH 3-6d BOX NAIL TO ROOF SHEATHING
 - 2"x4" FLAT BRACE WITH 2-#12x2" STS EACH END AT 48" OC

ROUGH OPENING SCHEDULE 13

CONNECTION	NAILING ¹
1. 3"x 20 ga bent Z strap w/2-8d box ea end at 4'-0" oc. Alternate direction of straps. (2 STRAPS = 8'-0")	
2. Continuous sealant typical.	
3. 5/8" type X gypsum board both sides.	
4. Flat 2x4 between purlins w/8d at 16" oc to roof sheathing.	
5. Flat 2x4 cont. w/2-#12x2" STS per purlin.	
6. Roof purlin.	



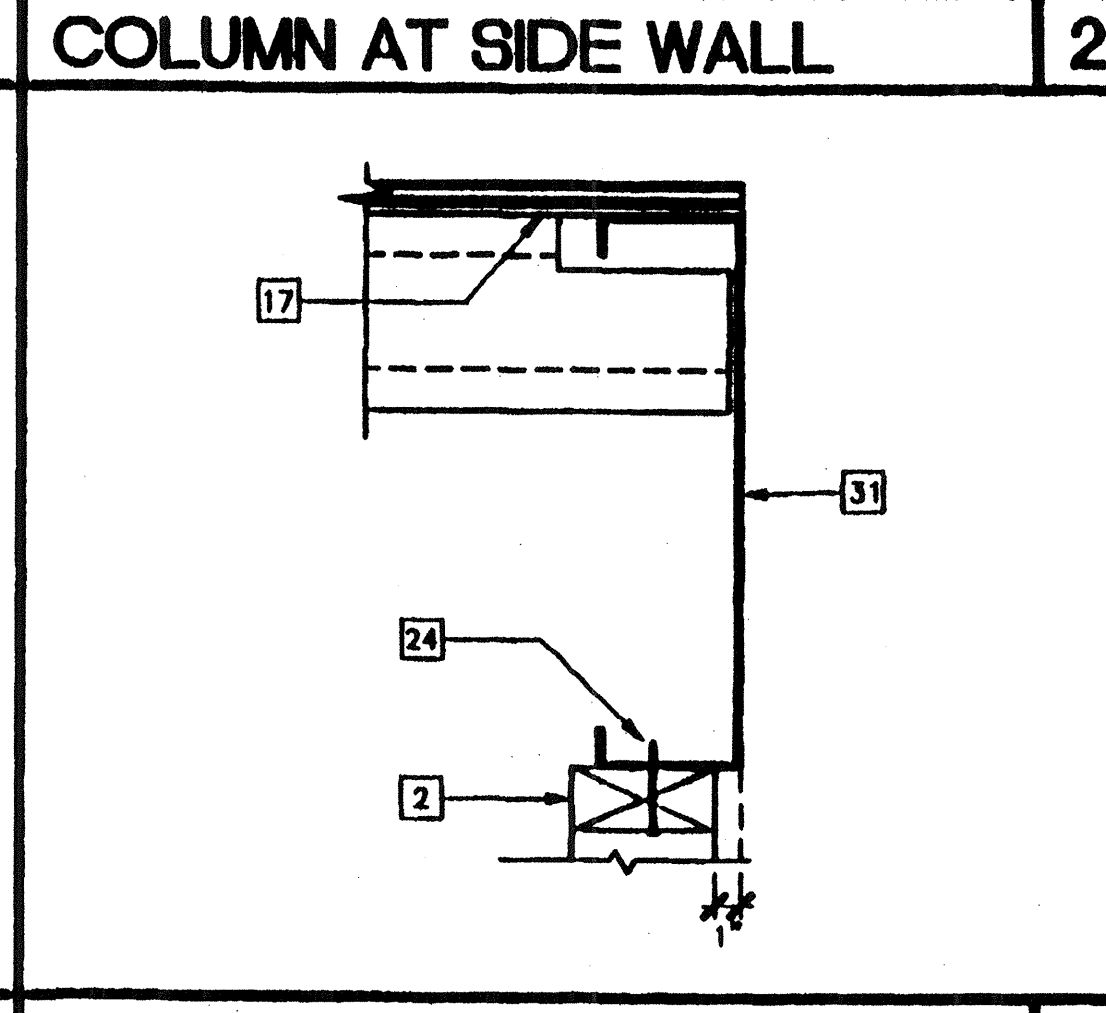
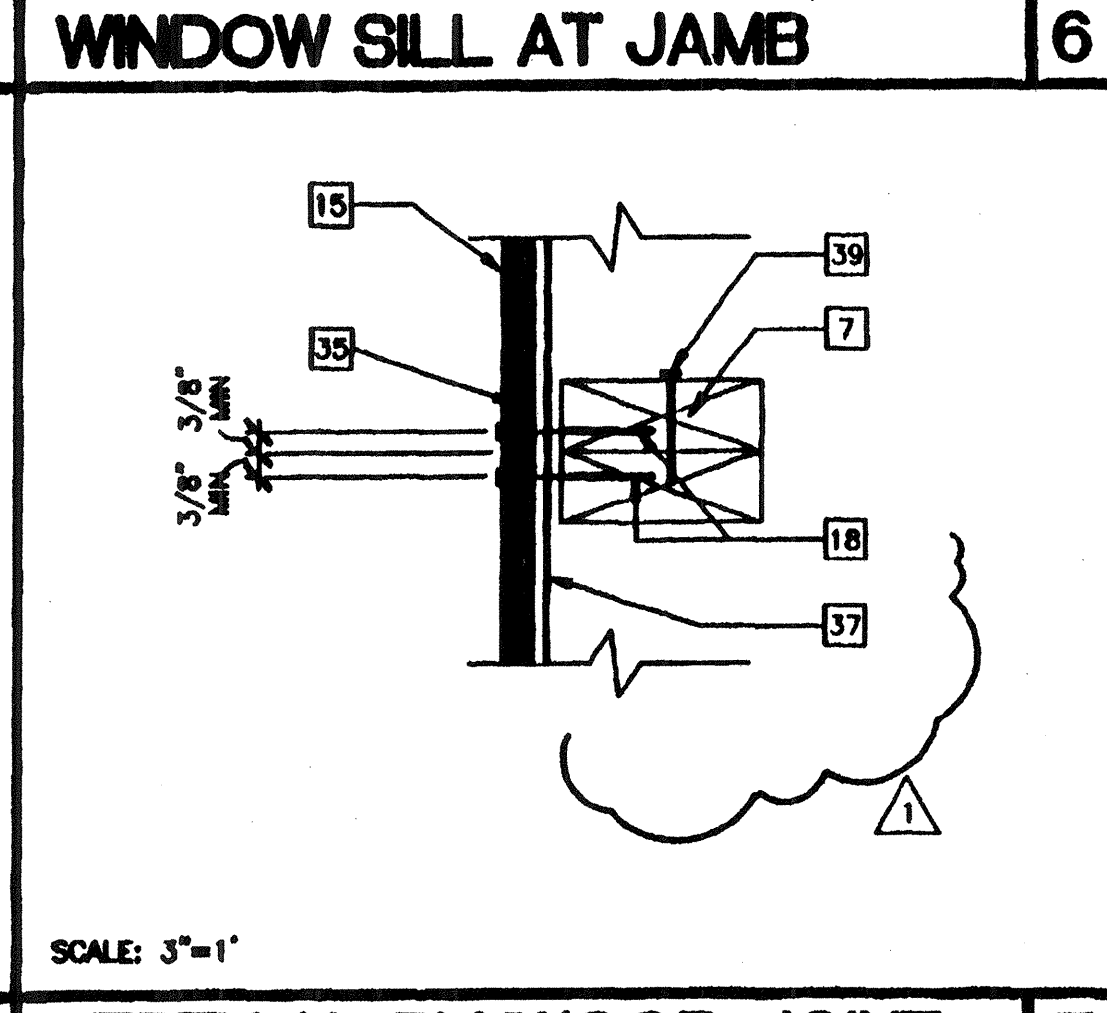
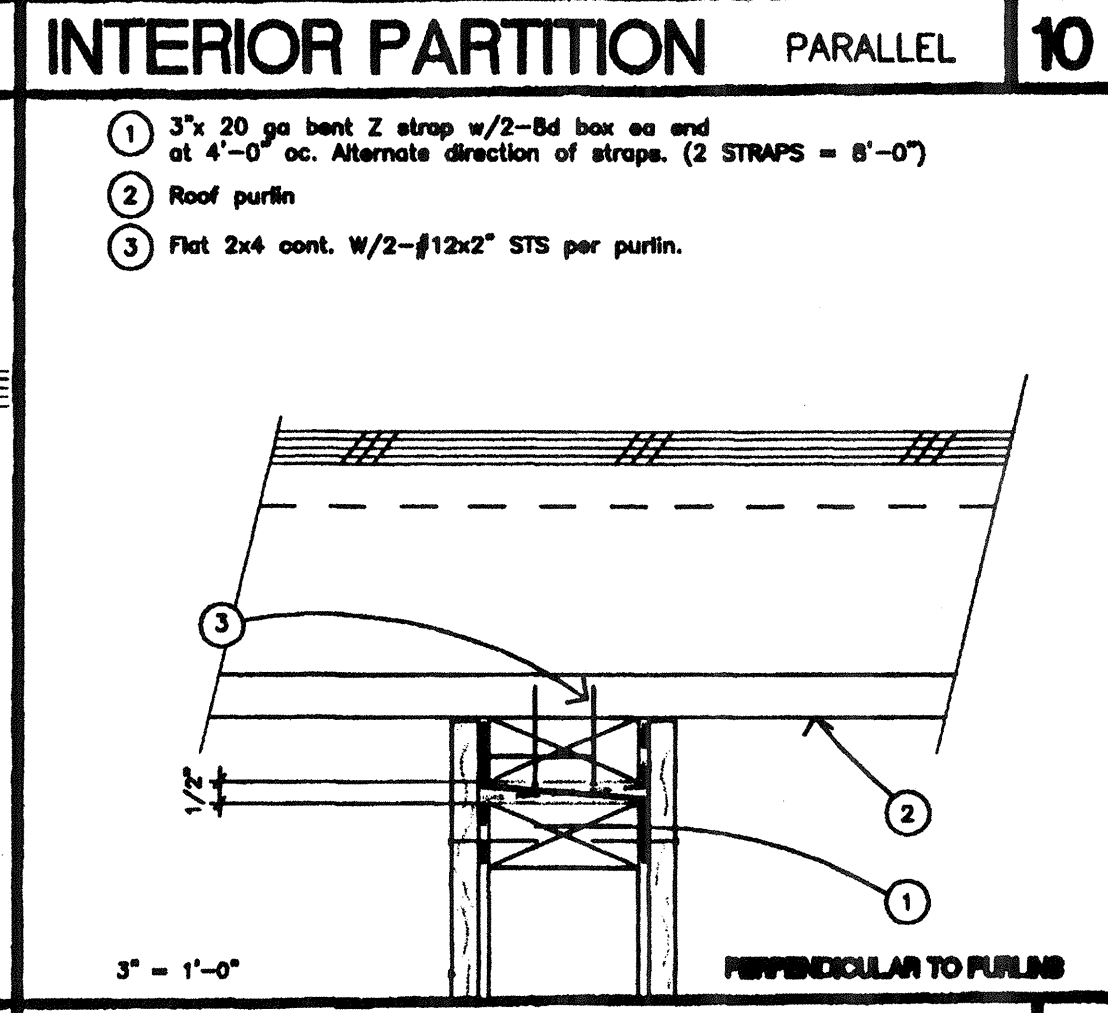
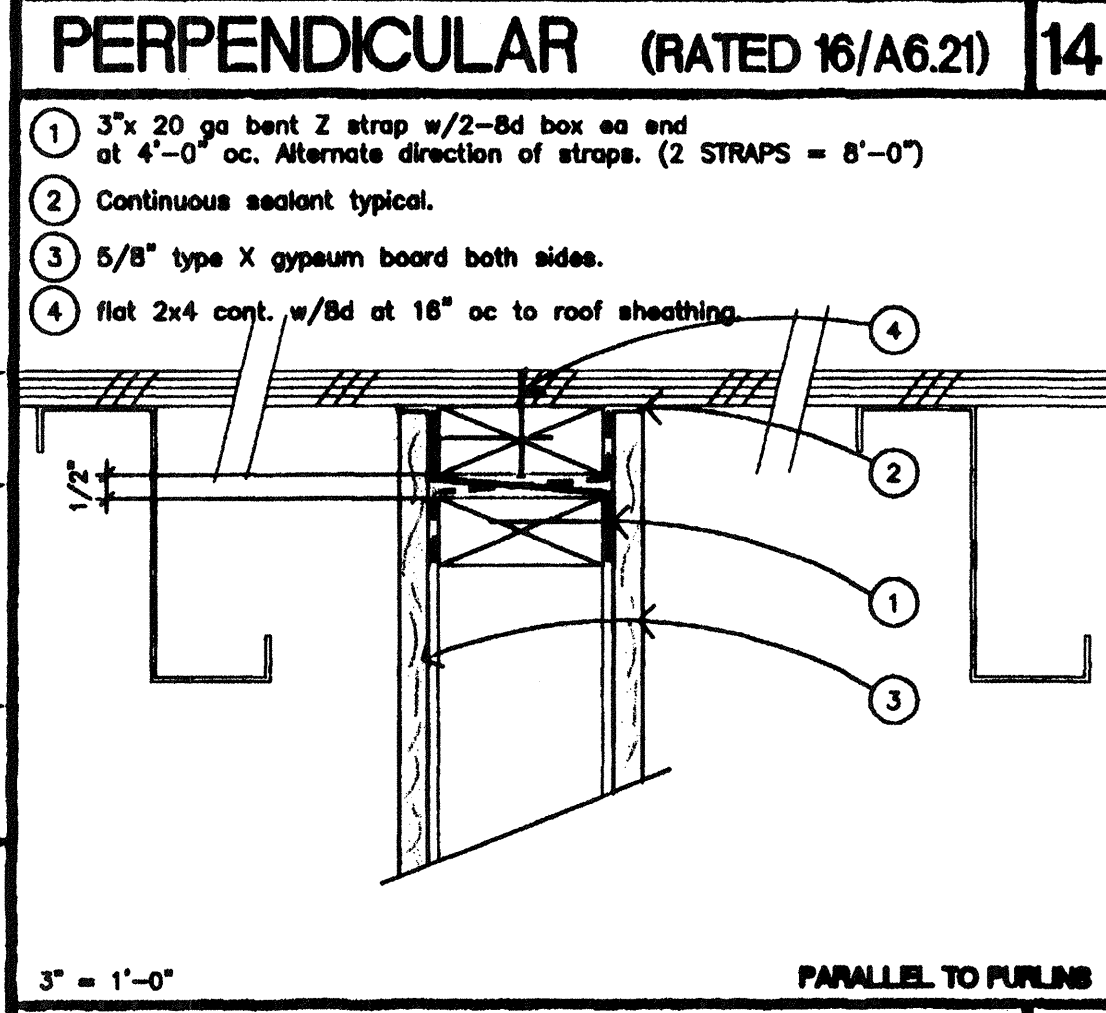
PERPENDICULAR (RATED 16/A6.21) 14

1. 3"x 20 ga bent Z strap w/2-8d box ea end at 4'-0" oc. Alternate direction of straps. (2 STRAPS = 8'-0")

2. Continuous sealant typical.

3. 5/8" type X gypsum board both sides.

4. Flat 2x4 cont. w/8d at 16" oc to roof sheathing.



PARALLEL (RATED 16/A6.21) 15

1. COMMON OR BOX NAILS MAY BE USED EXCEPT WHERE OTHERWISE STATED.

2. NAILS SPACED AT 6" ON CENTER AT EDGES, 12" AT INTERMEDIATE SUPPORTS EXCEPT 6" AT ALL SUPPORTS WHERE SPANS ARE 48" OR MORE. FOR NAILING OF WOOD STRUCTURAL PANEL AND PARTICLEBOARD (IMPREGNATED AND SHEAR WALLS, REFER TO SECTIONS 2315.3.3 AND 2315.4. NAILS FOR WALL SHEATHING MAY BE COMMON, BOX OR CASING.

3. COMMON OR DEFORMED SHANK.

4. COMMON.

5. DEFORMED SHANK.

6. CORROSION-RESISTANT SIDING OR CASING NAILS CONFORMING TO THE REQUIREMENTS OF SECTION 2304.3.

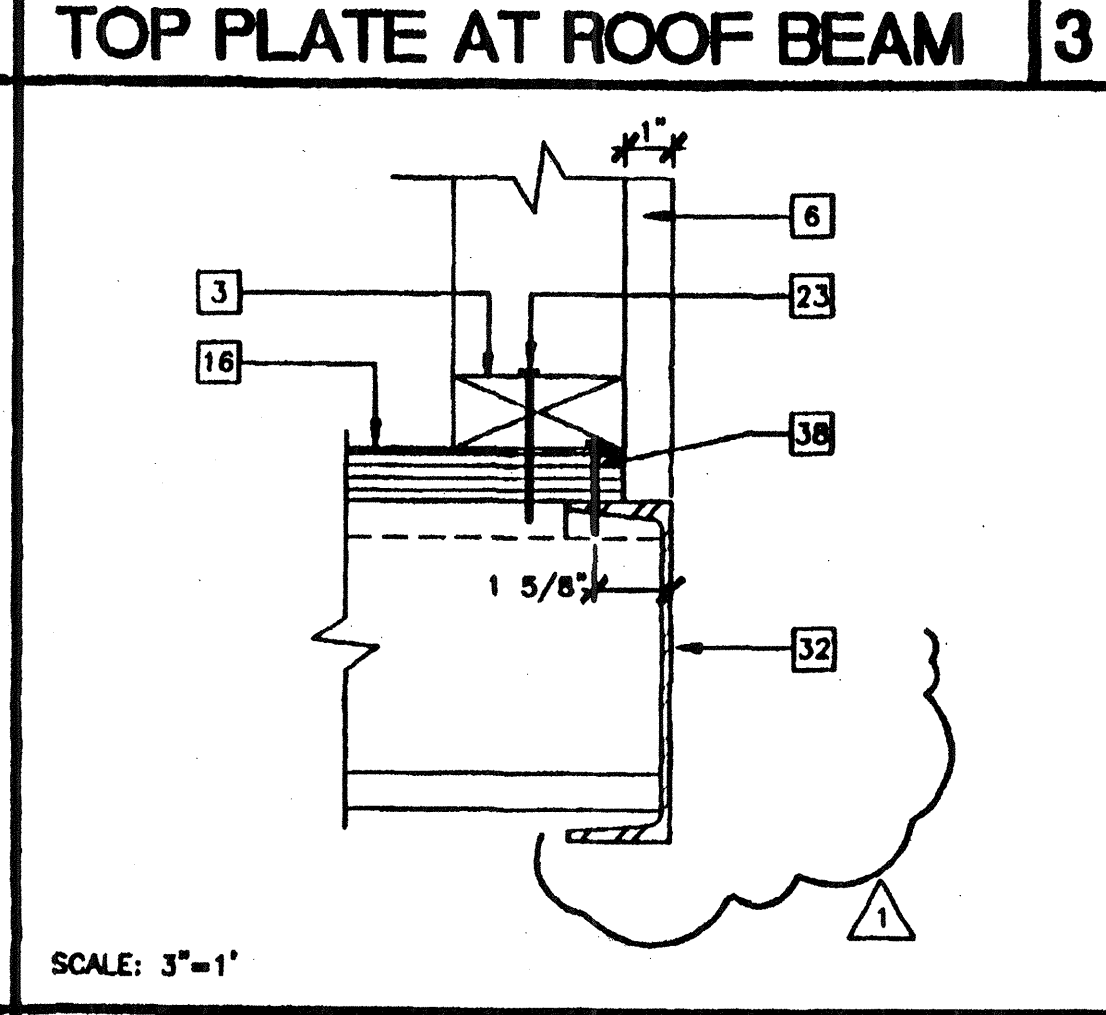
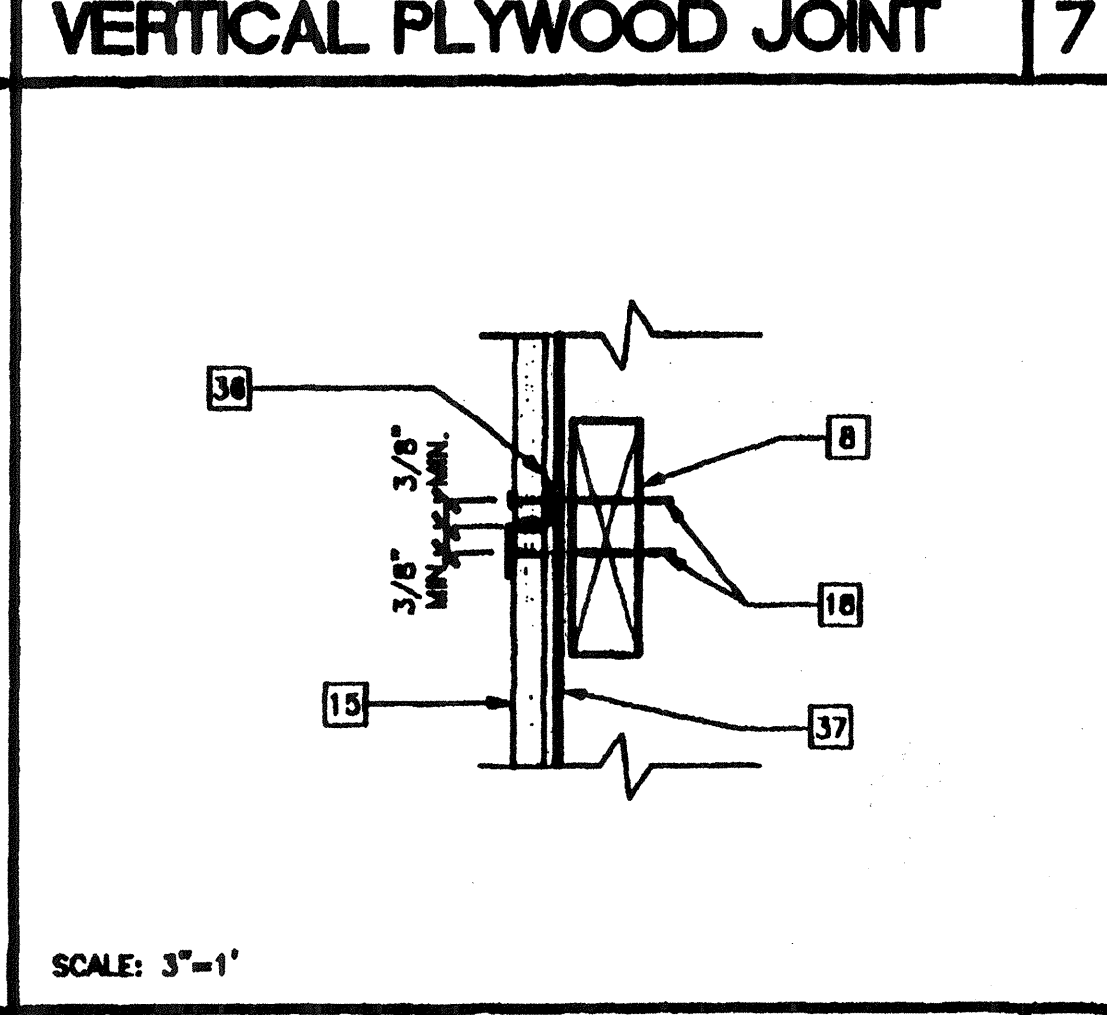
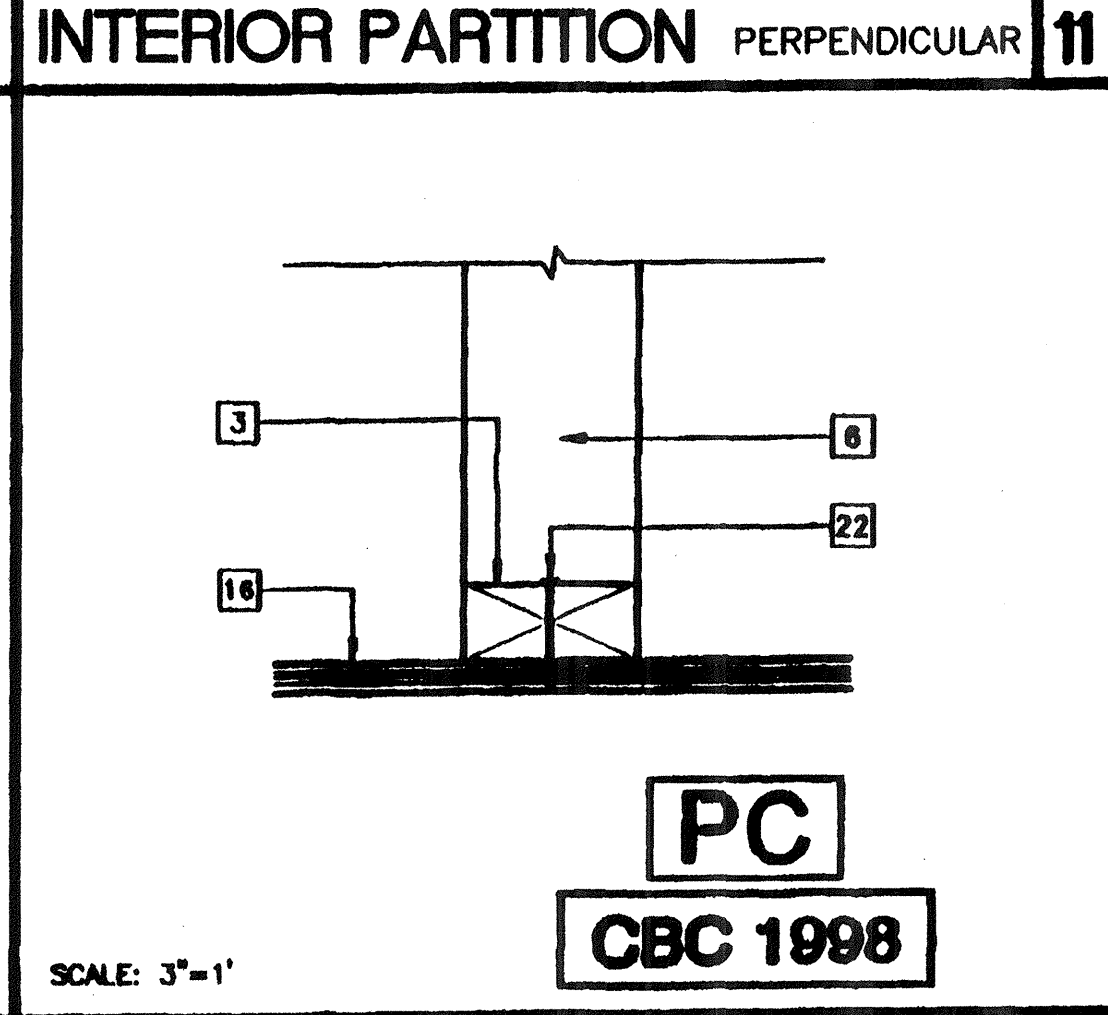
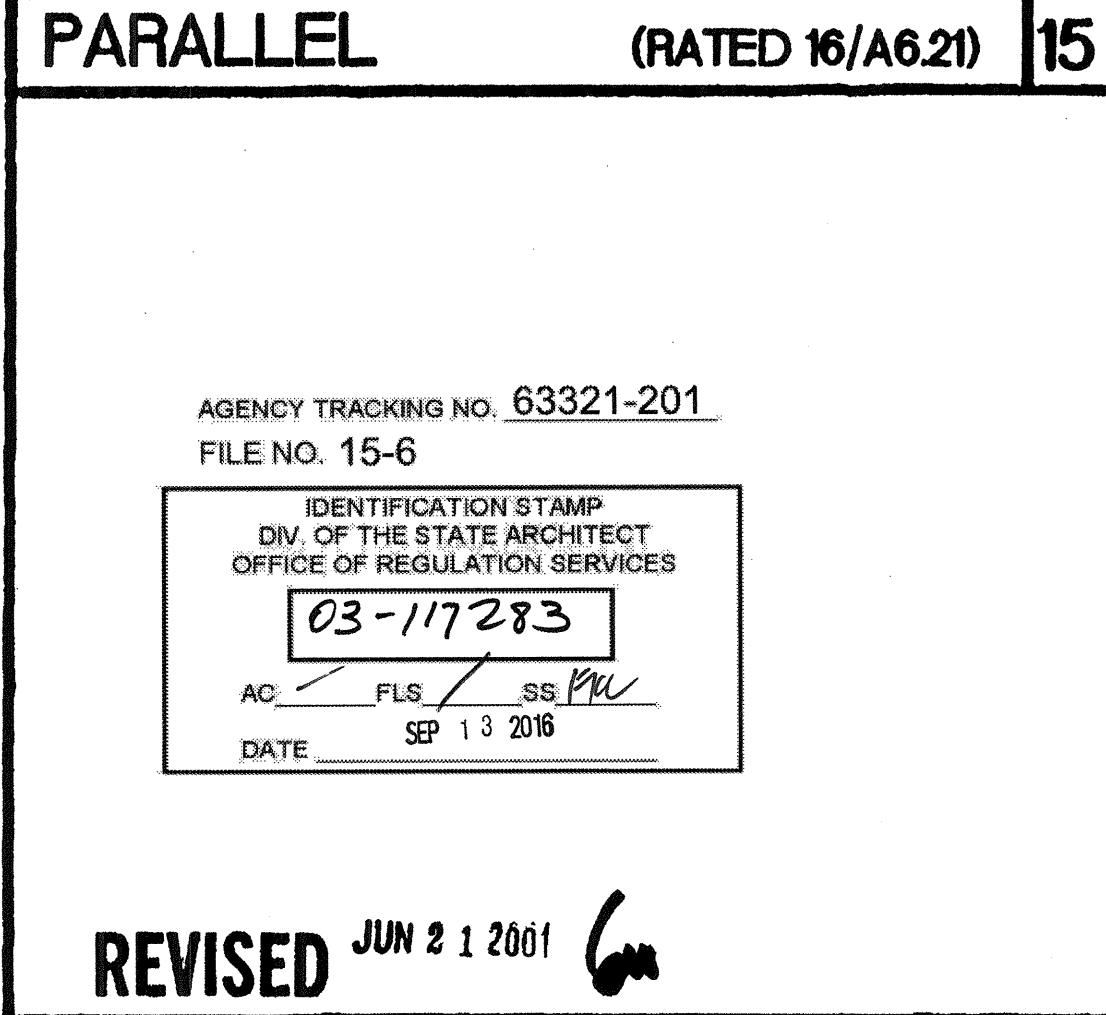
7. FASTENERS SPACED 3" ON CENTER AT EXTERIOR EDGES AND 6" ON CENTER AT INTERMEDIATE SUPPORTS.

8. CORROSION-RESISTANT ROOFING NAILS WITH 7/16" HEAD AND 1 1/2" LENGTH FOR 25/32" SHEATHING CONFORMING TO REQUIREMENTS OF SECTION 2304.3

9. CORROSION-RESISTANT STAPLES WITH NOMINAL 7/16" CROWN AND 1 1/8" LENGTH FOR 1/2" SHEATHING AND 1 1/2" LENGTH FOR 25/32" SHEATHING CONFORMING TO THE REQUIREMENTS OF SECTION 2304.3

10. PANEL SUPPORTS AT 16" (20" IF STRENGTH AXIS IN THE LONG DIRECTION OF THE PANEL, UNLESS OTHERWISE MARKED), CASING OR FINISH NAILS SPACED 6" ON PANEL EDGES, 12" AT INTERMEDIATE SUPPORTS.

11. PANEL SUPPORTS AT 24". CASING OR FINISH NAILS SPACED 6" ON PANEL EDGES, 12" AT INTERMEDIATE SUPPORTS.



NAILING SCHEDULE 17

REVISIONS	DESCRIPTION	DATE
SP	MODTECH ENGINEERING CHANGE	9/21/00
SP	MODTECH ENGINEERING CHANGE	11/9/00
SP	REVISED DETAILS #10, 11	11/22/00

REVISIONS

NO.	DESCRIPTION	DATE
1	REVISED	JUN 21 2001

16 PARTITION CONNECTION AT FLOOR 12

AGENCY TRACKING NO. 63321-201
FILE NO. 15-6

IDENTIFICATION STAMP
DIV. OF THE STATE ARCHITECT
OFFICE OF REGULATION SERVICES
03-117283

AC: FLS: SS: PKV
DATE: SEP 13 2018

PC
CBC 1998

SCALE: 3"=1'

17 HORIZONTAL PLYWOOD JOINT 8

IDENTIFICATION STAMP
DIV. OF THE STATE ARCHITECT
OFFICE OF REGULATION SERVICES
PC-04
101268

AC: FLS: SS: PKV
DATE: SEP 13 2018

REVISED

SCALE: 3"=1'

18 WALL SILL AT FLOOR 4

PROJECT NUMBER: 4134, 4284

© MODTECH, INC. 2001

SCALE: 3"=1'

19 WALL SILL AT FLOOR 4

DRAWN BY: M. ANDERSEN
DATE: APR 15 2002
CHECKED BY: 4012-12.1
DATE: 04-16-02

STRP-62

SCALE: 3"=1'