

**KEY NOTES**

- 1 AC1: WALL MOUNT 3.5 TON HEAT PUMP WITH 5KW HEATER OLA AND CALIFORNIA STATE ENERGY APPROVED 208/230V, 1 PHASE, 59 AMP WEIGHT 515 LBS
- 2 THERMOSTAT AT 48" AFF (SEE SPECS)
- 3 FLEX DUCT
- 4 15"x15" 4 WAY SUPPLY AIR GRILLE
- 5 10"x30"x24" PLENUM (SEE SPECS)

**NOTES**

1. INSULATION APPLIED TO EXTERIOR SURFACE OF DUCTS LOCATED IN BLDGS SHALL HAVE A FLAME SPREAD OF NOT MORE THAN 25 AND A SMOKE-DENSITY NOT EXCEEDING 50 WHEN TESTED AS A COMPOSITE INSTALLATION, INCLUDING INSULATION, FACING MATERIALS, TAPES AND ADHESIVES AS NORMALLY APPLIED
2. **SCHOOL EQUIPMENT ANCHORAGE**  
 THE FOLLOWING IS FOR THE MECHANICAL ENGINEER'S INFORMATION ONLY:  
 THE SEISMIC ANCHORAGE OF MECHANICAL EQUIPMENT SHALL CONFORM CCR TITLE 24, SECTION 1832A AND TABLE 18A-0, ANCHORAGE DETAILS FOR ROOF/FLOOR MOUNTED EQUIPMENT WEIGHING LESS THAN 400 LBS AND HUNG EQUIPMENT WEIGHING LESS THAN 20 LBS, MAY BE OMITTED FROM THE PLANS.  
 ALL MECHANICAL EQUIPMENT SHALL BE BRACED OR ANCHORED TO RESIST A HORIZONTAL FORCE ACTING IN ANY DIRECTION USING THE FOLLOWING CRITERIA:  

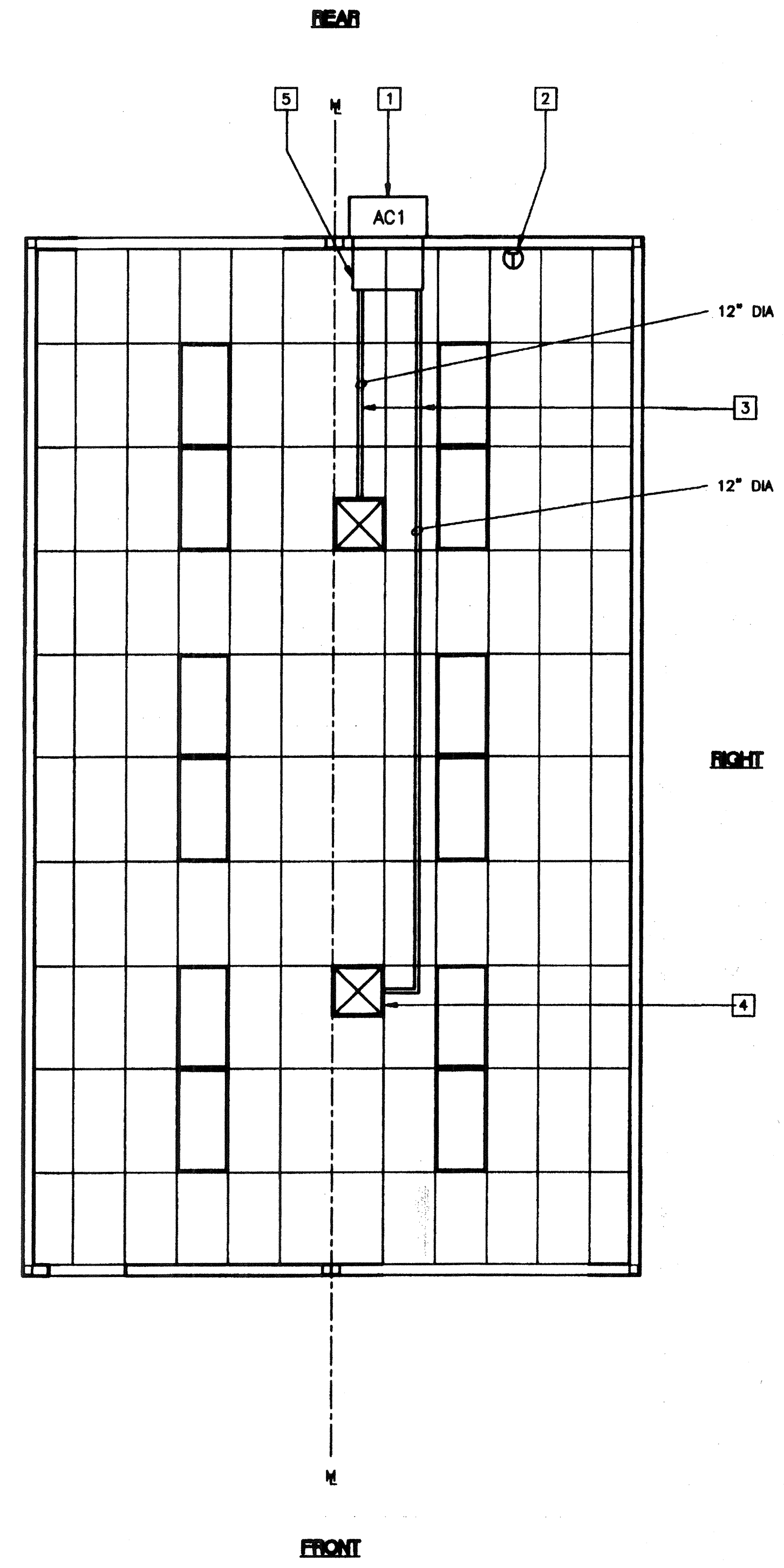
EQUIPMENT ON GRADE	20% OF OPERATING WEIGHT
EQUIPMENT ON STRUCTURE	30% OF OPERATING WEIGHT

 FOR FLEXIBLY MOUNTED EQUIPMENT USE 4 TIMES THE ABOVE VALUES AND FOR SIMULTANEOUS VERTICAL FORCE USE 1/3 TIMES THE HORIZONTAL FORCE.  
 THE ABOVE VALUES ARE FOR AN IMPORTANCE FACTOR, I = 1.0 AND SEISMIC ZONE, Z = 4  
 WHERE ANCHORAGE DETAILS ARE NOT SHOWN ON THE DRAWINGS THE FIELD INSTALLATION SHALL BE SUBJECT TO THE APPROVAL OF THE MECHANICAL ENGINEER AND THE FIELD ENGINEER OF THE OFFICE OF THE STATE ARCHITECT.

AGENCY TRACKING NO. 63321-201  
 FILE NO. 15-6

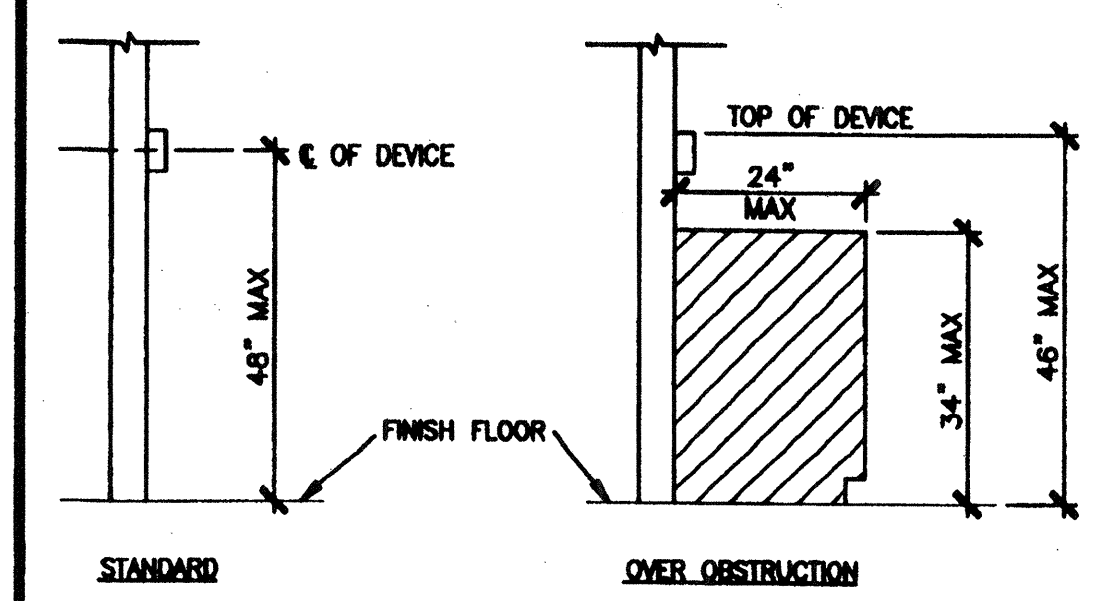
IDENTIFICATION STAMP  
 DIV. OF THE STATE ARCHITECT  
 OFFICE OF REGULATION SERVICES  
**03-117213**  
 AC/PL/PLS/SS/PLC  
 DATE SEP 13 2016

IDENTIFICATION STAMP  
 DIV. OF THE STATE ARCHITECT  
 OFFICE OF REGULATION SERVICES  
**04 104169**  
 DATE APR 8 2002



**MECHANICAL PLAN A** (24'x40')  
 SCALE: 1/4" = 1'-0"

**PC**  
**CBC 1998**



**DEVICE MOUNTING** STKP-62 1

**REVISIONS**

SP	MODTECH ENGINEERING CHANGE	09/28/00
1		
2		
3		
4		
5		

Electrical Engineer's Seal  
 Mechanical Engineer's Seal  
 Structural Engineer's Seal  
 Architects Seal  
 LICENSED ARCHITECT  
 GEORGE C. EDWARDS  
 STATE OF CALIFORNIA  
 DIV. OF THE STATE ARCHITECT  
 OFFICE OF REGULATION SERVICES  
 PC-04  
 101268  
 DATE 09/27/2000  
 REVISED

**MODTECH INC.**  
 2830 BARRETT AVENUE  
 PERRIS, CALIF. 92572  
 PH (909) 943-4014  
 FAX (909) 940-0427

PROJECT NUMBER: 4134 © MODTECH, INC. 2001  
 DRAWN BY: M. ANDERSEN  
 DATE: APR 15 2002  
 CHECKED BY: 4012-121  
 DATE: 04-16-02  
**MECHANICAL (HVAC) PLAN** 24'x40' **M1.01A**

FILE PATH: 2440-4134.DWG

PROJECT NO. 4134  
 PC-04-101268