

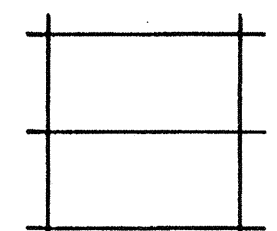
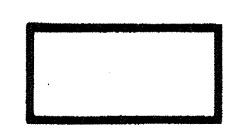
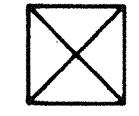



KEY NOTES

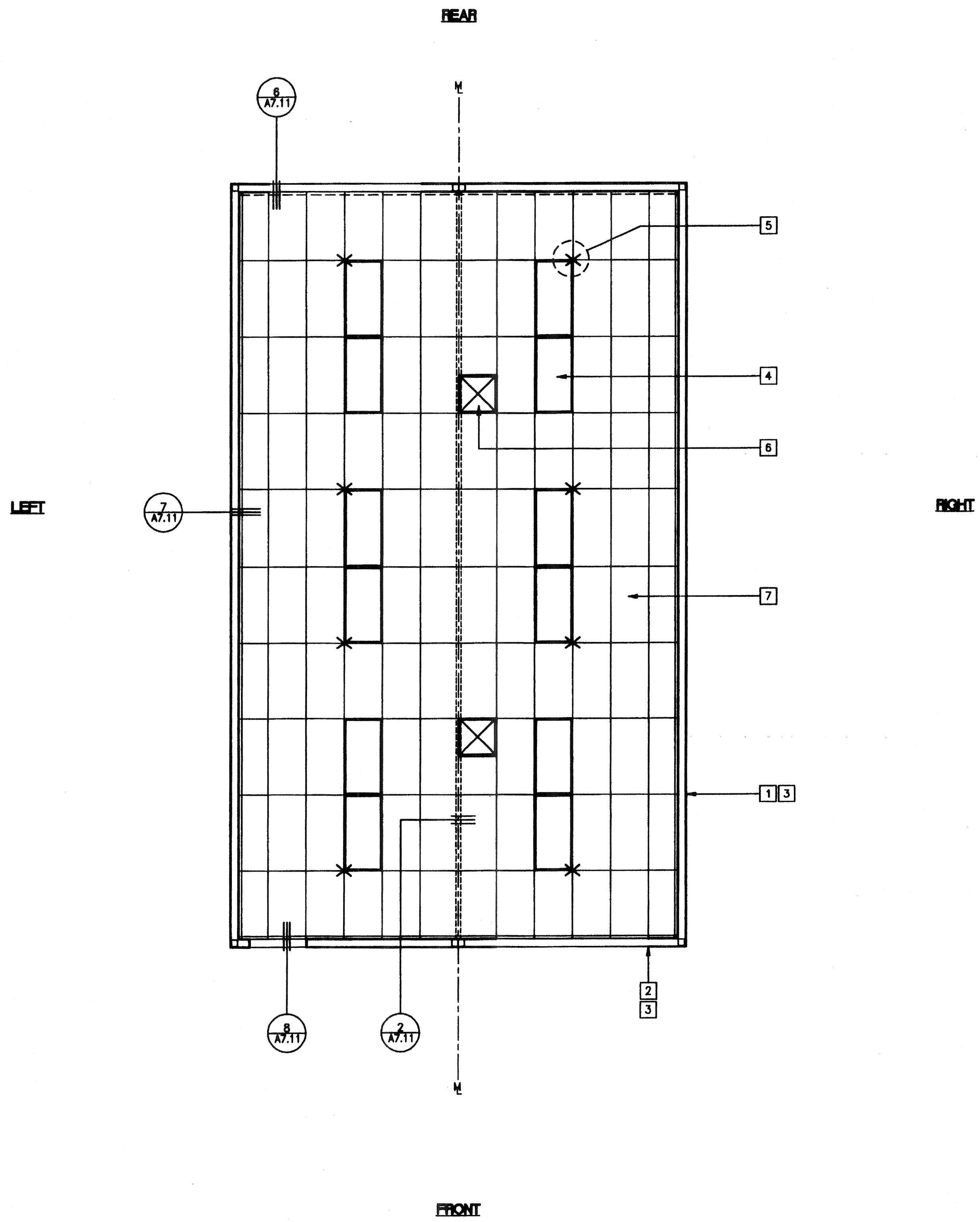
- 1 MAIN RUNNERS AT 4'-0" OC WITH 12 GA HANGER WIRES AT END OF EACH RUNNER
 - 2 CROSS TEE AT 2'-0" OC
- | T-BAR PART NUMBERS | | | |
|--------------------|------------------|-----------------------|----------|
| | ARMSTRONG PA-041 | CHICAGO METALLIC R-47 | USG R-47 |
| RUNNER MAIN | 7301 | 200 | DS 28 |
| 4' CROSS TEE | 7342 | 1210 | DX 422 |
| 2' CROSS TEE | 7328 | 1226 | DX 216 |
| WALL ANGLE | 7800 | 1420-01 | M-7 |
- 4 LIGHT FIXTURE, RECESSED, 2'x4' TYPICAL - 11/A7.11
 - 5 4 WAY SPLAY AT LOCATIONS INDICATED, WIRES TAUT BUT NOT TO DISTORT GRID - 1/A7.11
 - 6 HVAC SUPPLY REGISTER, 2'x2' TYPICAL - 12/A7.11
 - 7 CEILING PANELS: 2'x4' LAY-IN PANELS, ASTM FLAME SPREAD CLASS 1 (0-25), SMOKE DEVELOPMENT DENSITY LESS THAN 450 TYPICAL

NOTES

1. AT THE END OF ROWS OF RUNNERS A 12 GA HANGER WIRE SHALL BE ATTACHED WITHIN 8" OF WALL OR SOFFIT.
2. VERTICAL WIRES MORE THAN 1-IN-8 OUT OF PLUMB SHALL HAVE COUNTER BRACING WIRES.
3. RUNNERS MAY BE ATTACHED TO WALLS OR MOLD AT (2) ADJACENT WALLS - OTHER WALLS NO ATTACHMENT. CLEARANCE OF 1/2" BETWEEN END OF RUNNERS AND FACE OF WALL.
4. DUCTWORK SHALL BE RIGIDLY ATTACHED TO BUILDING AND SHALL NOT BE CLOSER THAN 6" TO HANGER WIRES.

LEGEND

-  T & T BAR CEILING
-  2'x 4' ELEC. FIXTURE RECESSED
-  SUPPLY AIR DIFFUSER
-  SPLAY WIRE
-  INDICATES FIXED SIDE 7/A7.11
-  INDICATES FREE SIDE 6/A7.11



AGENCY TRACKING NO. 63321-201
 FILE NO. 15-6
 IDENTIFICATION STAMP
 DIV. OF THE STATE ARCHITECT
 OFFICE OF REGULATION SERVICES
03-117283
 AC: 11/11 FLS: 05/05 SS: POC
 DATE: SEP 13 2016

IDENTIFICATION STAMP
 DIV. OF THE STATE ARCHITECT
 OFFICE OF REGULATION SERVICES
04 104169
 FLS: 05/05 SS: J
 DATE: APR 14 2002

REFLECTED CEILING PLAN A/C (24'x40')
 SCALE: 1/4" = 1'-0"

PC
CBC 1998

REVISIONS	Electrical Engineer's Seal	Mechanical Engineer's Seal	Structural Engineer's Seal	Architect	MODTECH INC.	PROJECT NUMBER: 4134	© MODTECH, INC. 2001	DRAWN BY: M. ANDERSEN DATE: APR 15 2002
								CHECKED BY: 4012-121 DATE: 04-16-02

Electrical Engineer's Seal
 Mechanical Engineer's Seal
 Structural Engineer's Seal

Architect
 IDENTIFICATION STAMP
 DIV. OF THE STATE ARCHITECT
 OFFICE OF REGULATION SERVICES
PC-04
101268
 AC: 04/16/02 FLS: 05/05 SS: POC
 DATE: SEP 11 7 1999

MODTECH INC.
 2830 BARRETT AVENUE
 PERRIS, CALIF. 92572
 PH (909) 943-4014
 FAX (909) 940-0427

PROJECT NUMBER: 4134
 © MODTECH, INC. 2001

REFLECTED CEILING PLAN 24'x40'

A7.01A