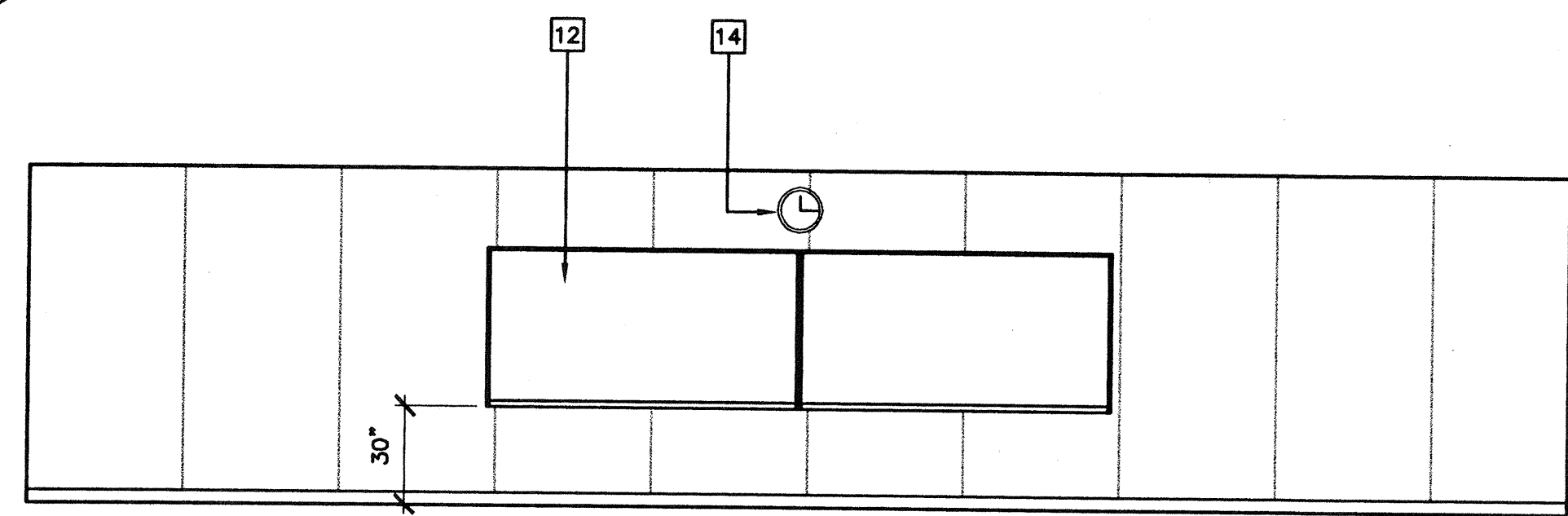
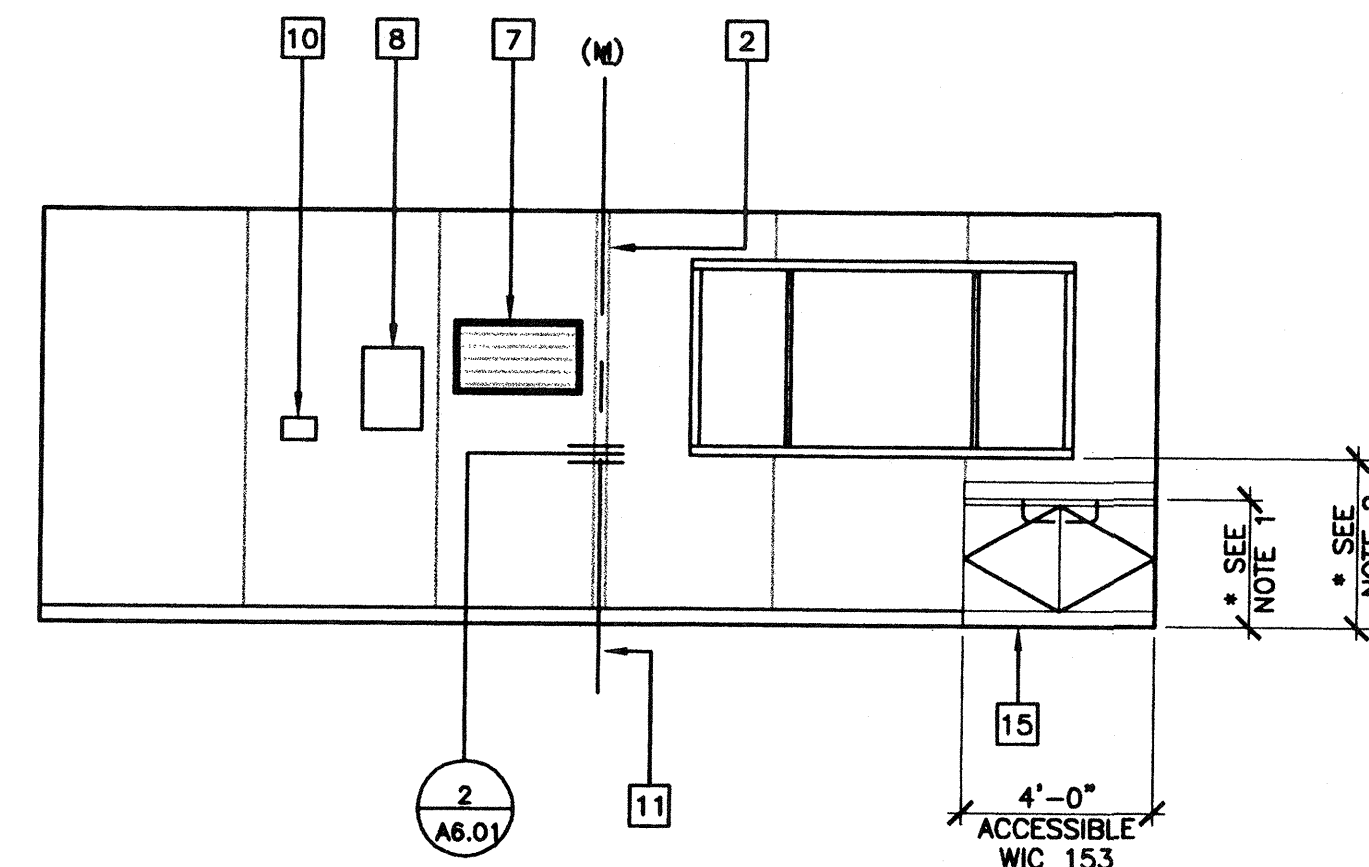


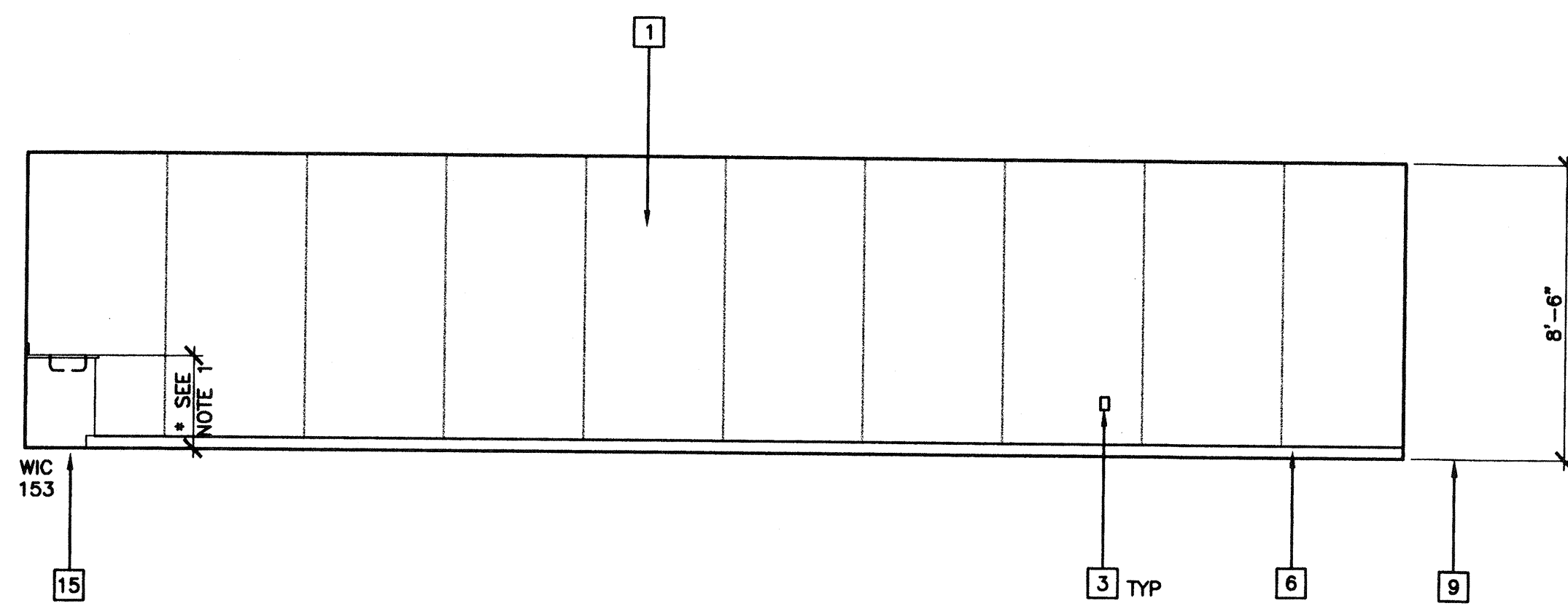
△



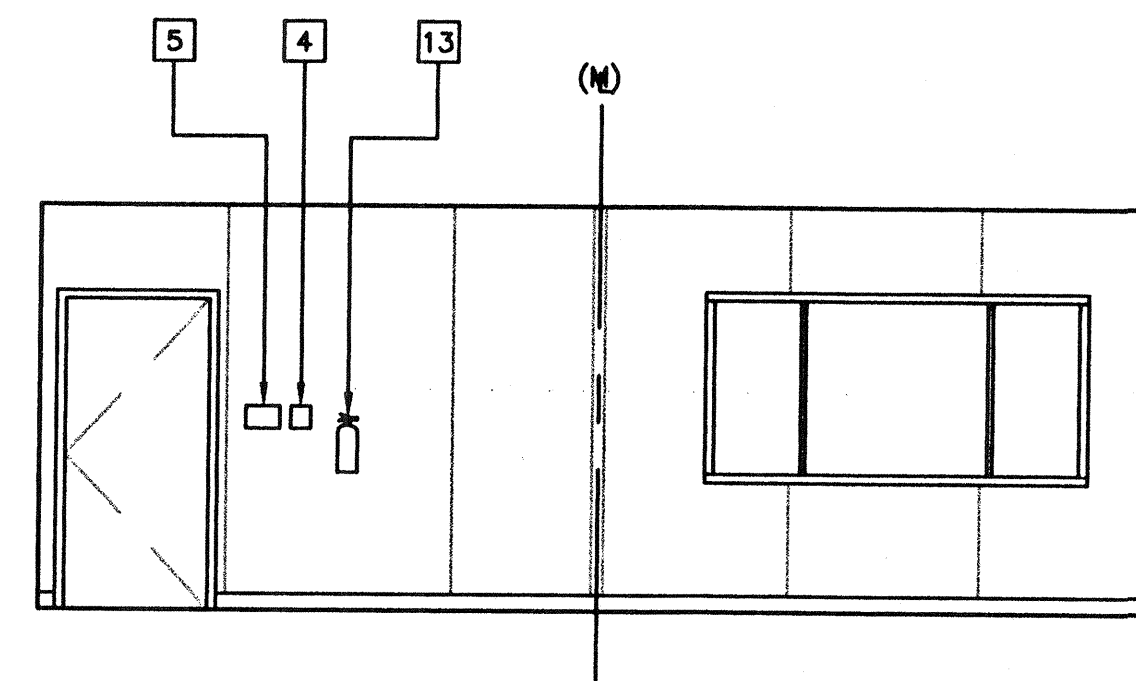
③ RIGHT SIDE ELEVATION



② REAR ELEVATION



① LEFT ELEVATION



④ FRONT ELEVATION

KEY NOTES

- ① TYPICAL INTERIOR FINISH (FIN)
- ② CLOSURE AT MODULAR JOINT
- ③ DUPLEX WALL RECEPTACLE (EL)
- ④ J-BOX FOR FIRE ALARM PULL STATION (EL)
- ⑤ LIGHT SWITCH (EL)
- ⑥ BASE
- ⑦ RETURN AIR GRILL
- ⑧ ELECTRICAL PANEL (EL)
- ⑨ FINISH FLOOR LINE (FIN)
- ⑩ THERMOSTAT (HV)
- ⑪ MODULAR JOINT
- ⑫ 8040 MARKBOARD. TYPICAL FOR (2)
- ⑬ FIRE EXTINGUISHER: 5 LBS DRY CHEMICAL WITH 2A-10BC UL RATING ON WALL MOUNTED BRACKET, HANDLE AT 48" AFF
- ⑭ ELECTRIC CLOCK (EL)
- ⑮ OPTIONAL SINK CABINET (LOCATION MAY VARY) SINK MODEL #

NOTES

- *1. FINAL HEIGHT IS T.B.D. BY CUSTOMER PRIOR TO CONSTRUCTION.
- *2. DEPENDING ON CUSTOMER'S PREFERENCE FOR CABINET HEIGHT/WINDOW MAY BE RAISED TO A 42" MAX - THIS WILL BE DETERMINED BY CUSTOMER PRIOR TO CONSTRUCTION

AGENCY TRACKING NO. 63321-201
FILE NO. 15-6

IDENTIFICATION STAMP
DIV. OF THE STATE ARCHITECT
OFFICE OF REGULATION SERVICES
03-117283
APR 13 2016
DATE

IDENTIFICATION STAMP
DIV. OF THE STATE ARCHITECT
OFFICE OF REGULATION SERVICES
04 104109
APR 18 2002

INTERIOR ELEVATIONS A/C

(24'x40')
SCALE: 1/4" = 1'-0"

PC
CBC 1998

REVISIONS			
△	MCA	MODIFIED FLOOR PLAN	04/15/02
△			
△			
△			

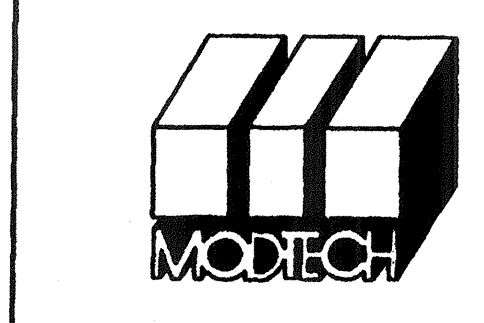
Electrical Engineer's Seal

Mechanical Engineer's Seal

Structural Engineer's Seal

Architect's Seal

IDENTIFICATION STAMP
DIV. OF THE STATE ARCHITECT
OFFICE OF REGULATION SERVICES
PC-04
101268
DATE SEP 07 1999



MODTECH INC.
2830 BARRETT AVENUE
PERRIS, CALIF. 92572
PH (909) 943-4014
FAX (909) 940-0427

PROJECT NUMBER: 4134

© MODTECH, INC. 2001

INTERIOR ELEVATIONS 24'x40' STD/C LAB

STKP-62
DRAWN BY: M. ANDERSEN
DATE: APR 15 2002
CHECKED BY: 4012-121
DATE: 04-16-02
MODTECH Index No.

A4.01A

PROJECT NO. 4134