

FLOOR JOIST TABLE

LIVE LOAD	6 3/8" X 2 1/2" X 12GA	STIFFENED FLOOR OPTION
50 PSF	48" OC	24" OC

KEY NOTES

- 1 6 3/8 X 2 1/2 X 12GA BLOCKING AT MIDSPAN OF FLOOR HDG TYPICAL
- 2 5/8" HAND HOLES AT BOLT BM TO FM (2 PLACES)
- 3 5 TAP & PER METER CHANNEL (TYPICAL)
- 4 PLYWOOD FLOOR SHEATHING APA PS-1-83 1 1/8" THICK STURD-I-FLOOR 48" OC SPAN RATING ATTACHED W/ 6 X 1 3/4" SELF-TAPPING FLAT HEAD SCREWS AT 6" OC TO PERIMETER FRAME APPROX 1/4" AKN 1440 T5 DRIVE PINS AT 6" OC SUPPORTED EDGES AND 4" OC FIELD TO JOIST TYPICAL
- 5 6 3/8 X 2 1/2 X 12GA FLOOR PURLIN @ 48" OC
- 6 TYPICAL BOLT HOLE LOCATION (SEE)
- 7 1/16" HOLE @ MIDHEIGHT OF CT X 7 A FOR MATERIAL HANDLING

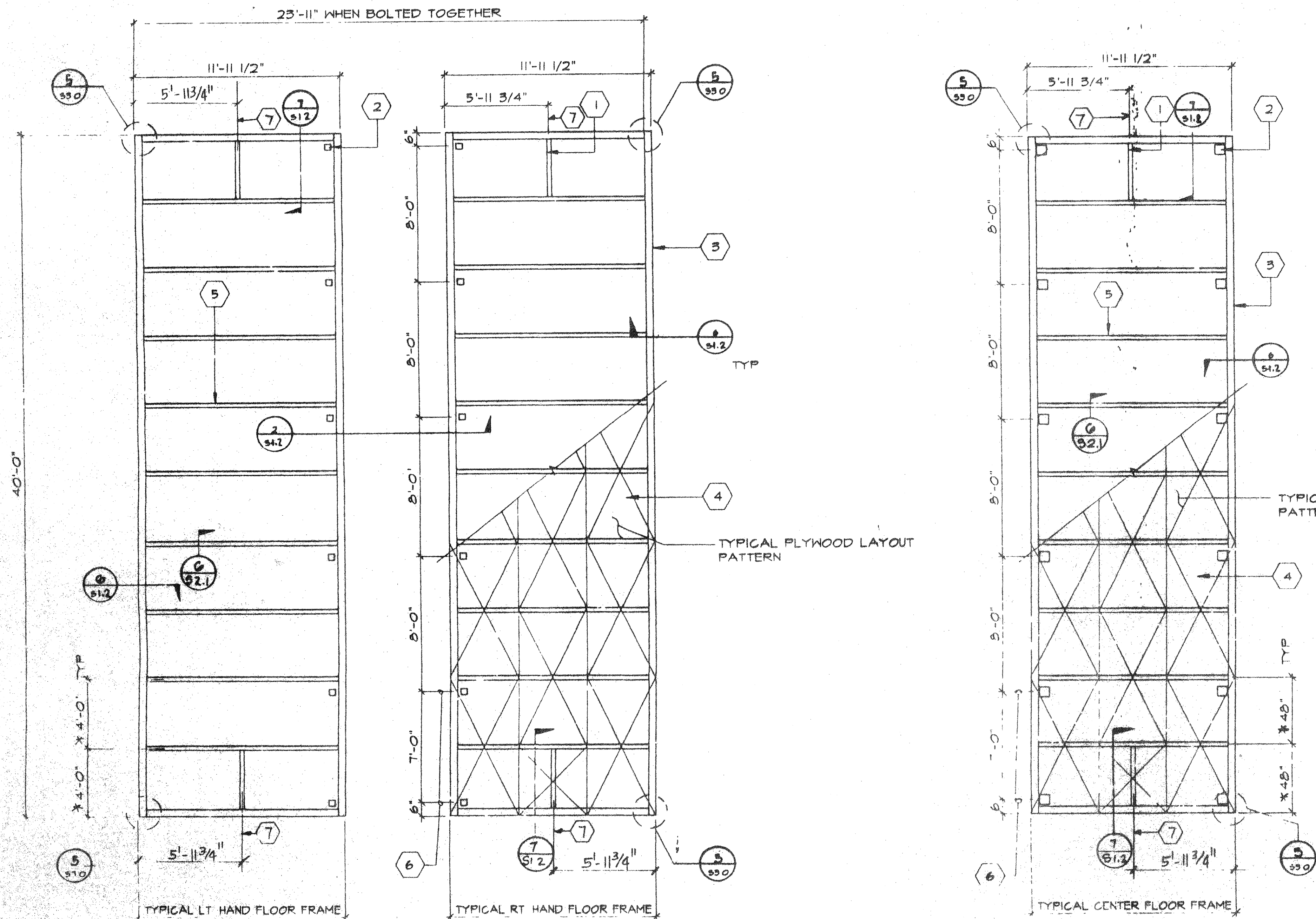
NOTES

1. FOR L/HAND & R/HAND FRAME SEE S1.0

AGENCY TRACKING NO. 63321-201
FILE NO. 15-6

IDENTIFICATION STAMP
DIV. OF THE STATE ARCHITECT
OFFICE OF REGULATION SERVICES
03-117283
AC / FLS / SS / PC
DATE SEP 13 2016

IDENTIFICATION STAMP
DIV. OF THE STATE ARCHITECT
OFFICE OF REGULATION SERVICES
04 101555
AC / FLS / SS / JP
DATE SEP 09 1999



* REFER TO FLOOR JOIST TABLE FOR CORRECT SPACING PER PROJECT.

FLOOR FRAMING PLAN

50 PSF FLR LL

SCALE 1/4"=1'-0"

ARCHITECT

ELECTRICAL

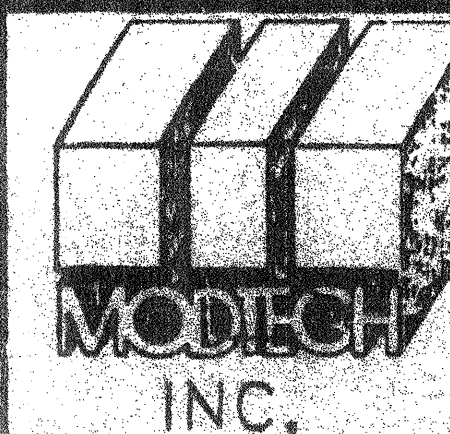
STRUCTURAL

MECHANICAL

FIRE MARSHAL

ACCESS COMPLIANCE

STRUCTURAL SAFETY



\$278

FLOOR FRAMING PLAN

4012-094

9/9/99

S1.0