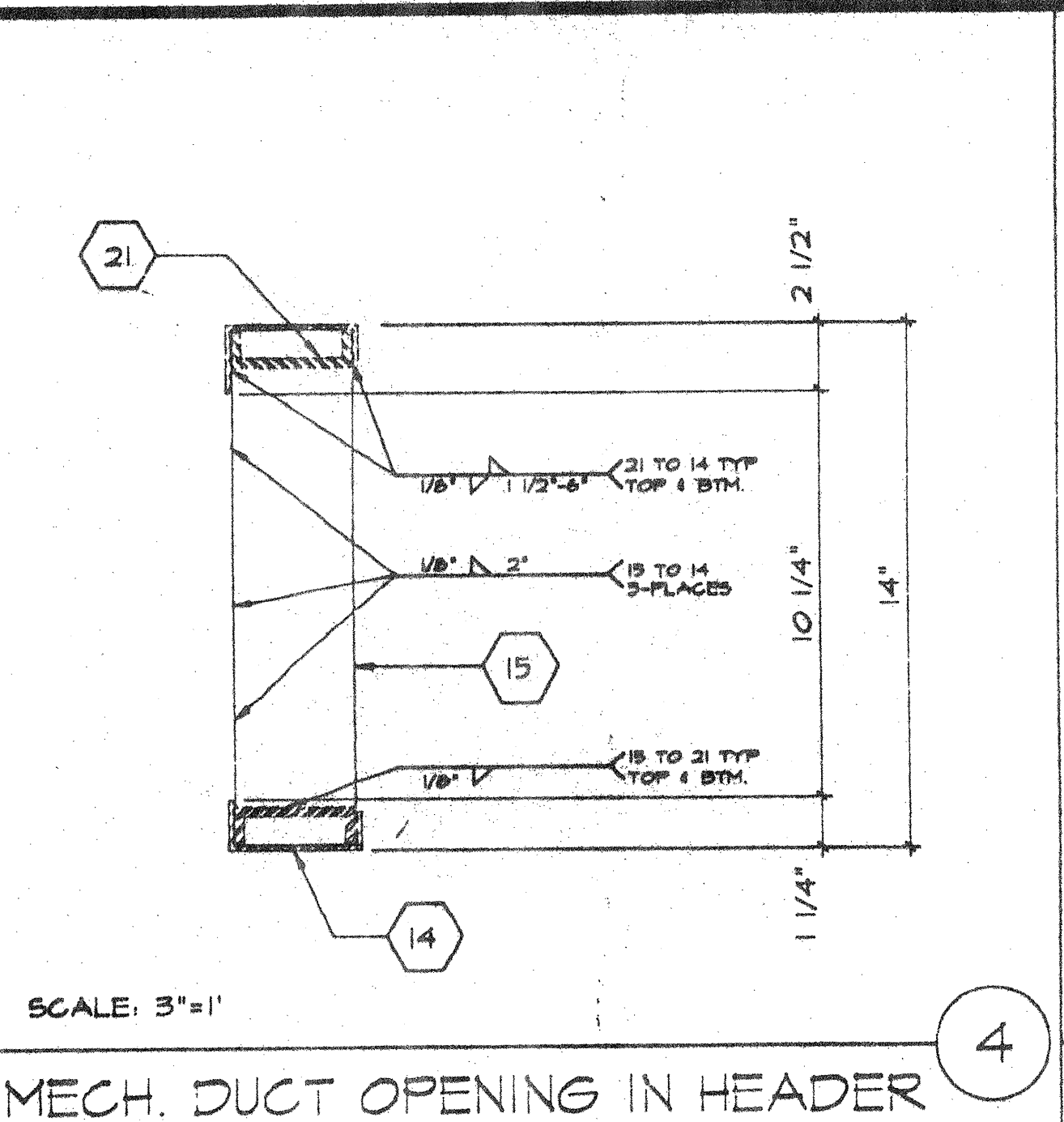
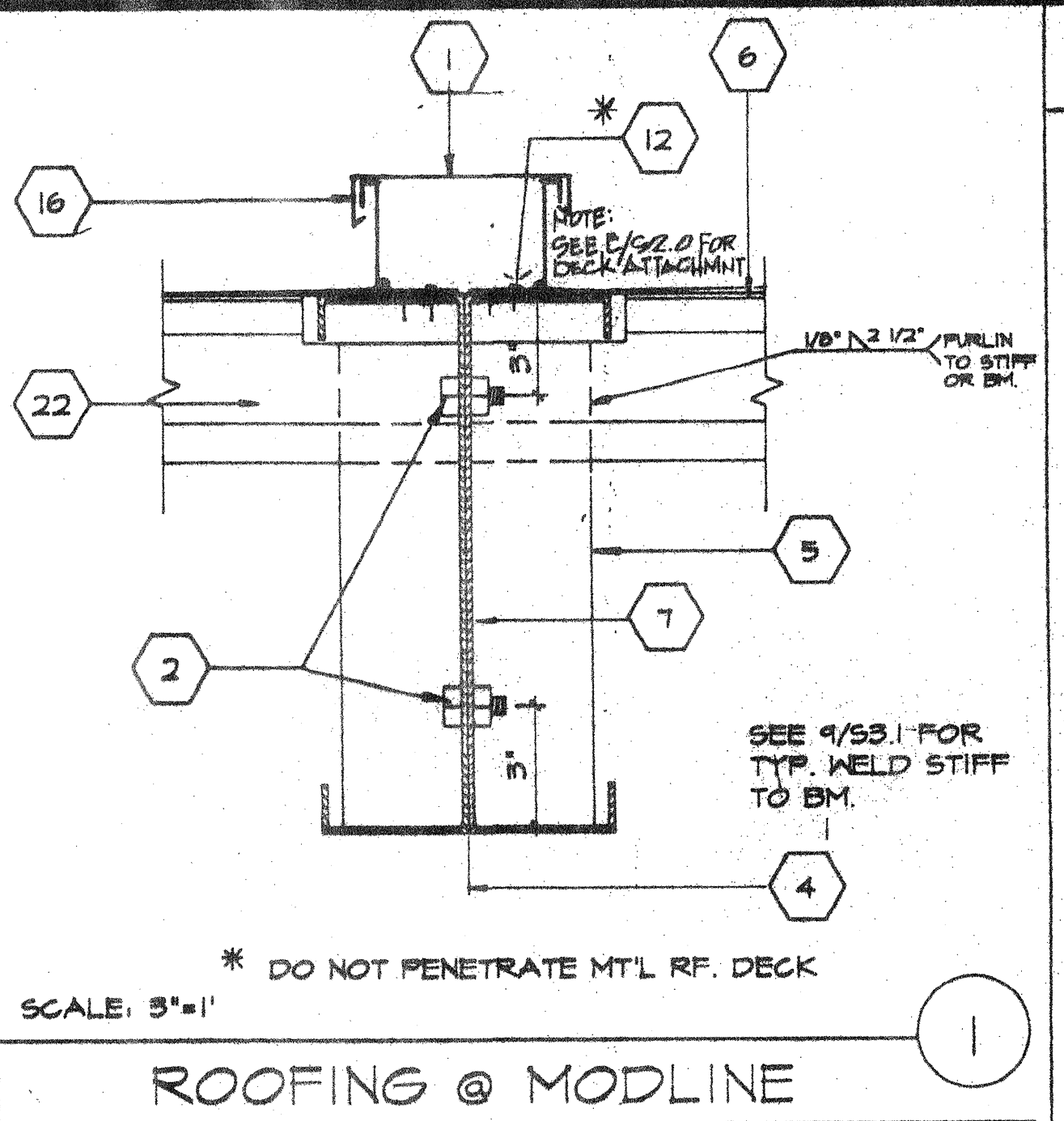


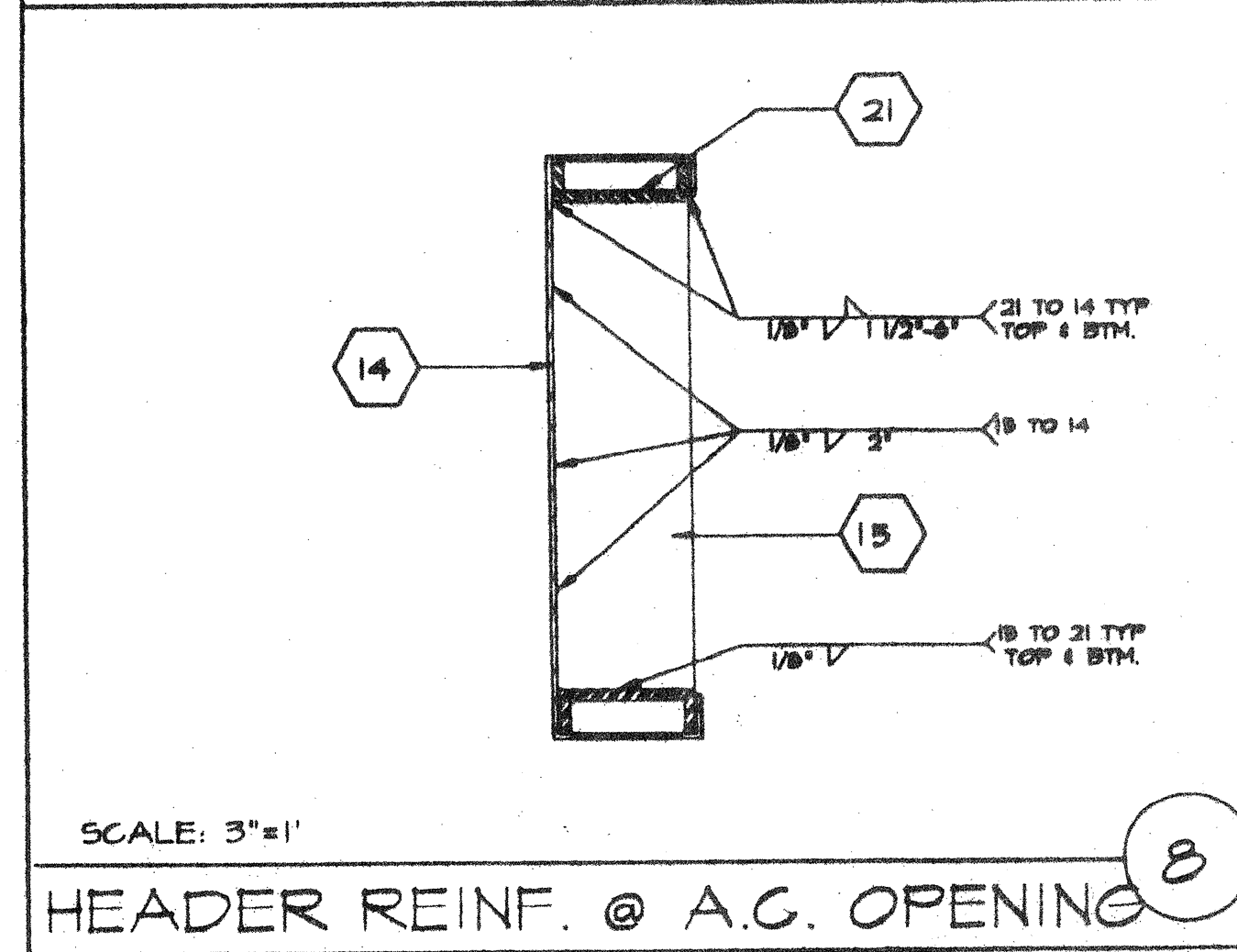
BLOCK @ MIDSPAN



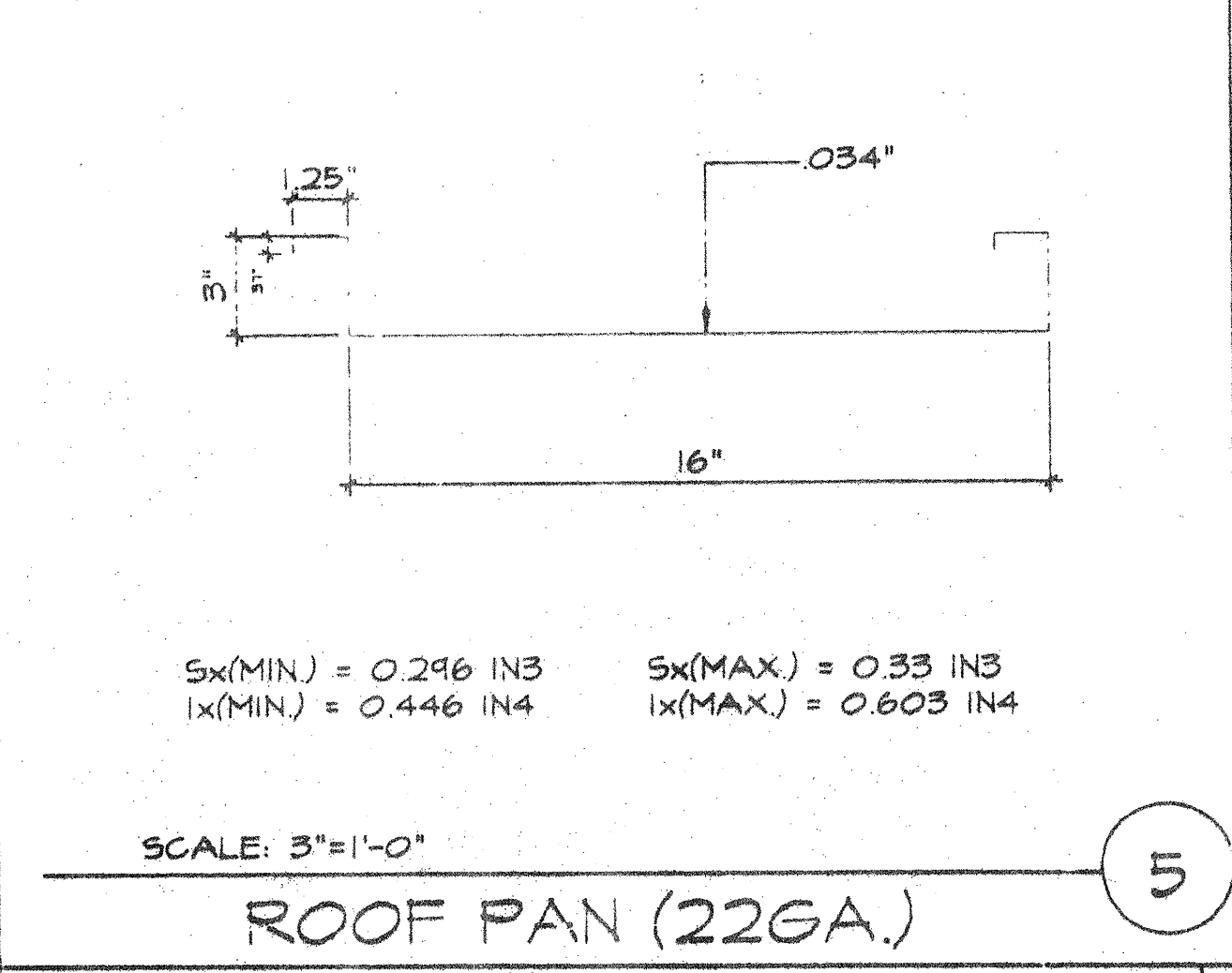
MECH. DUCT OPENING IN HEADER



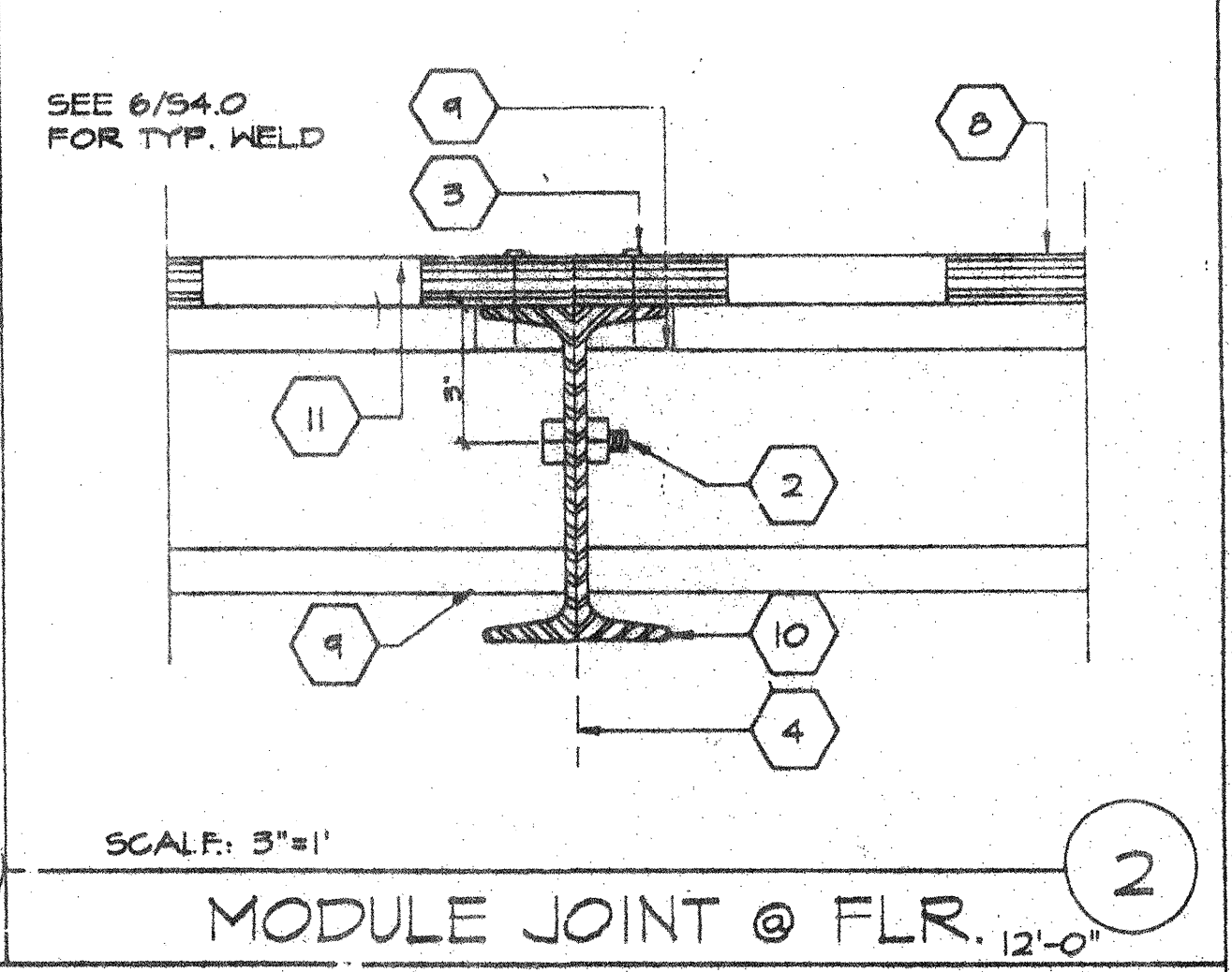
ROOFING @ MODLINE



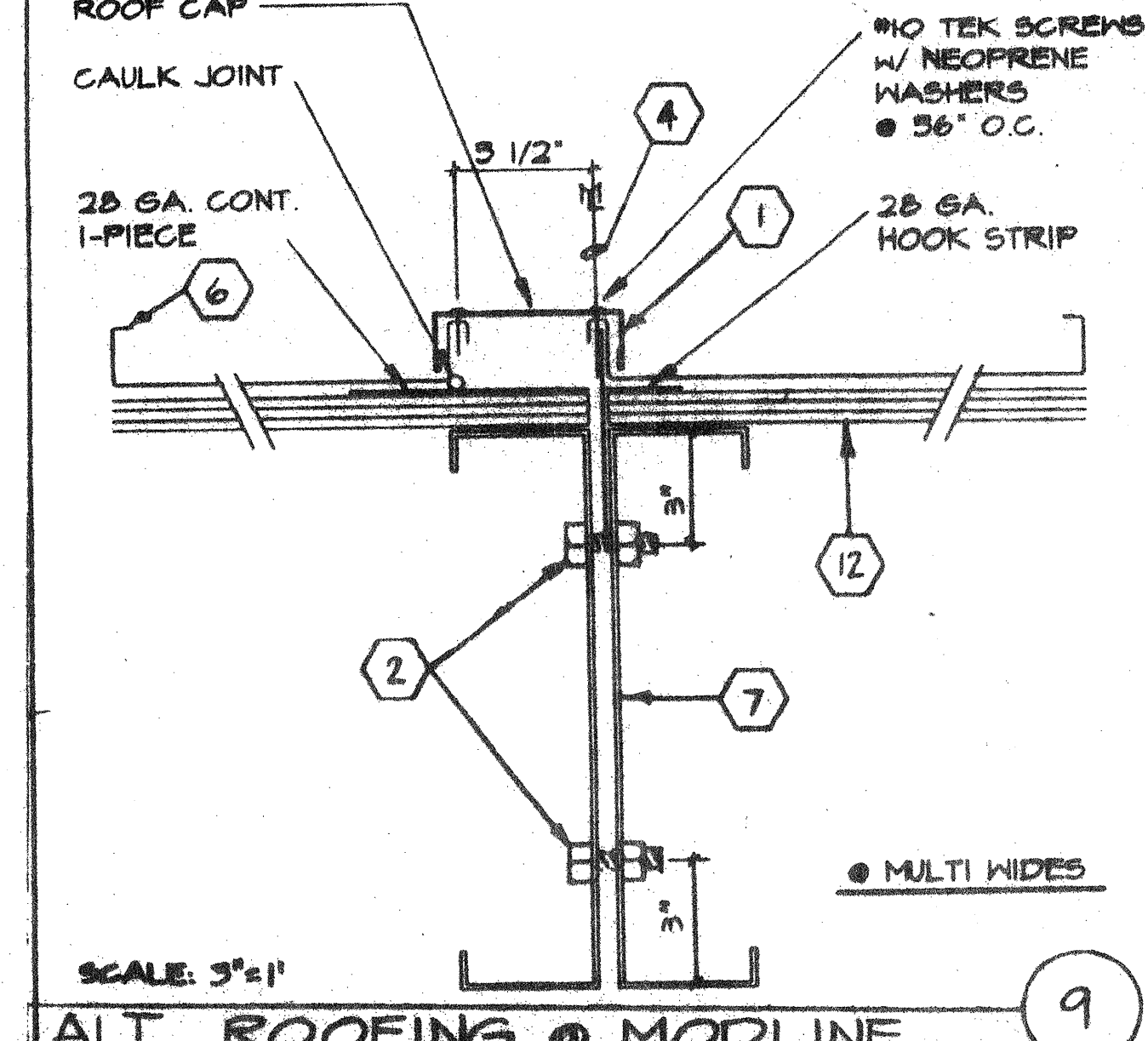
HEADER REINF. @ A.G. OPENING



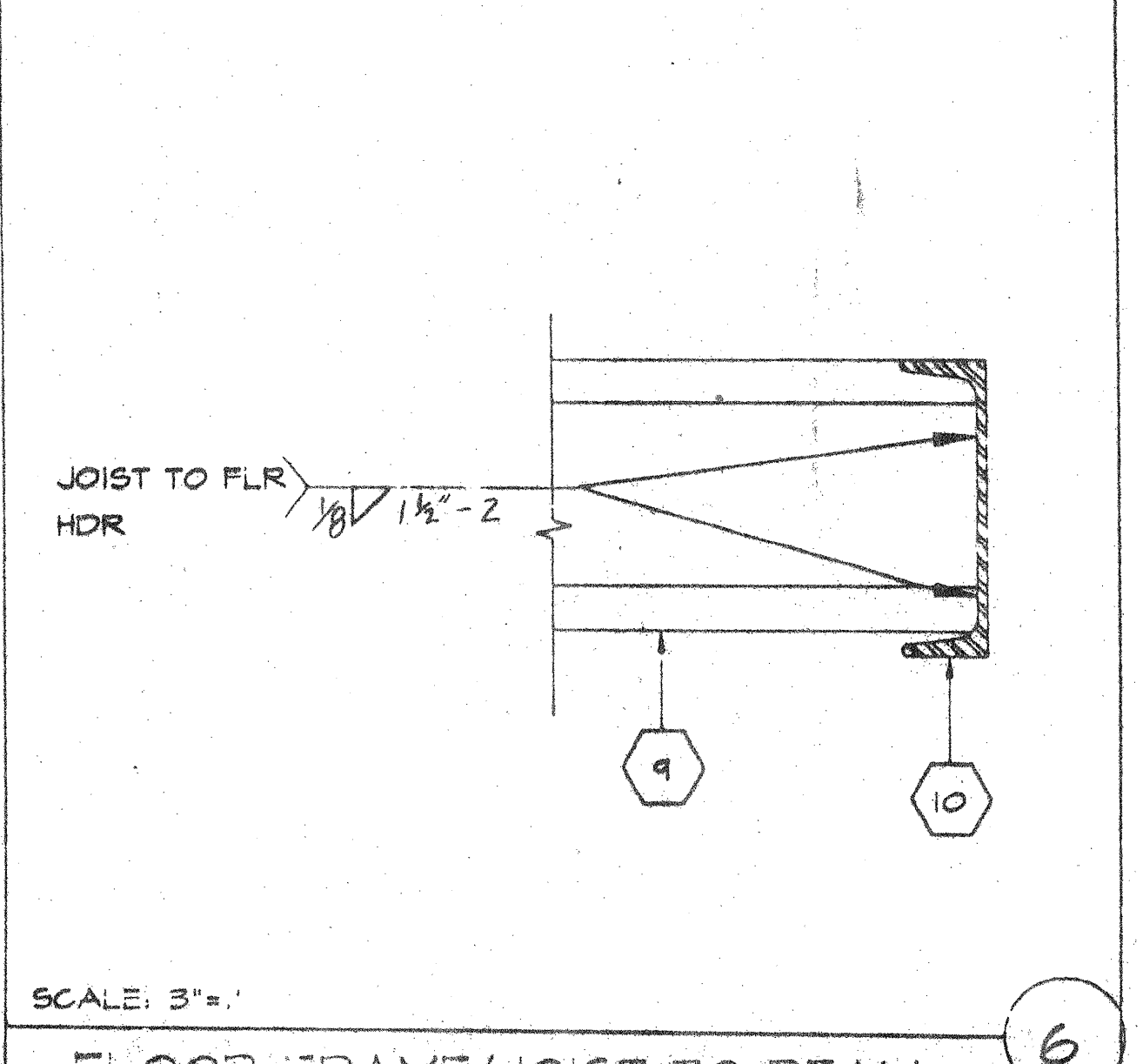
ROOF PAN (22GA.)



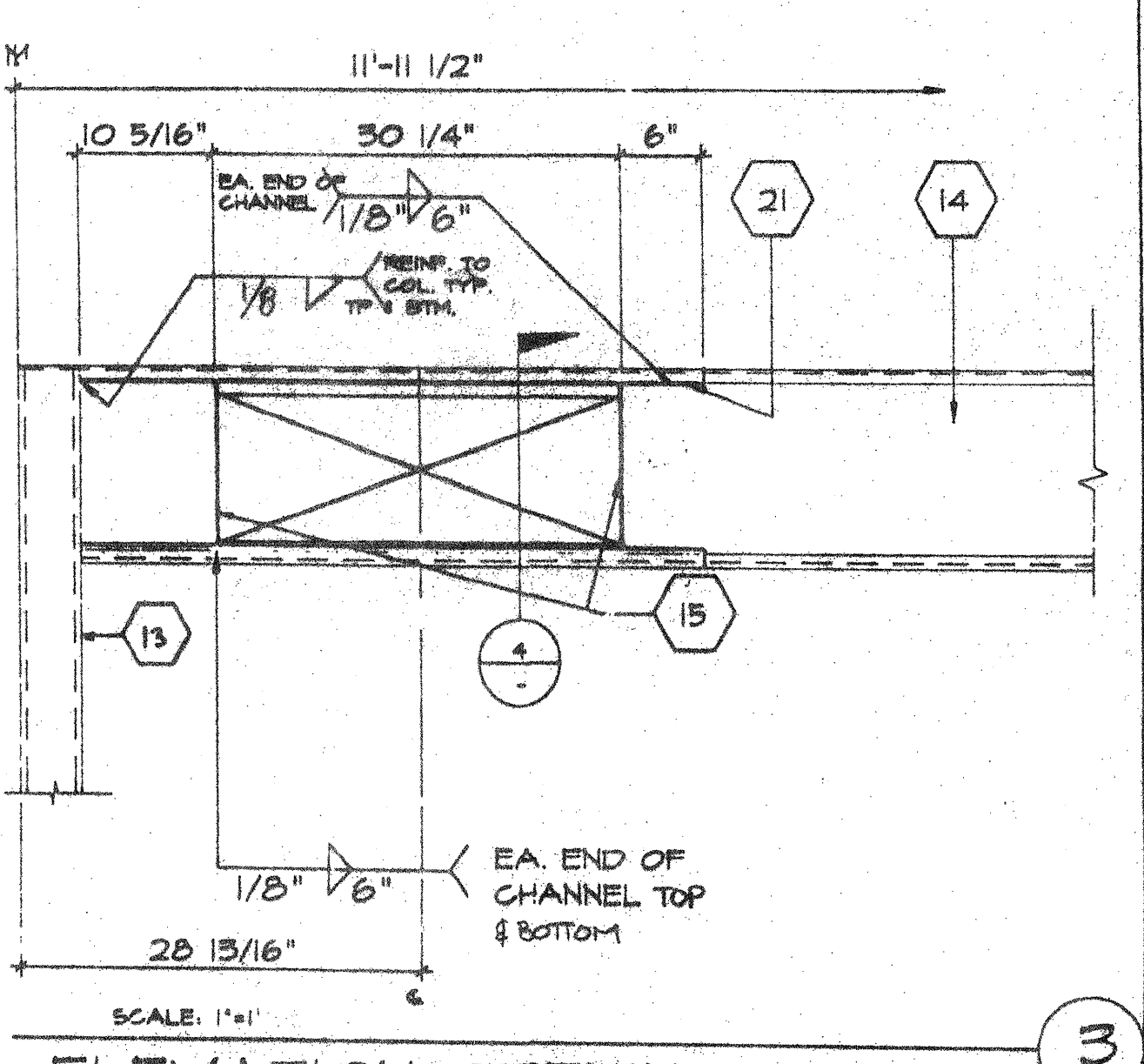
MODULE JOINT @ FLR.



ALT. ROOFING @ MODLINE



FLOOR FRAME/JOIST TO BEAM



ELEVATION-OPENING

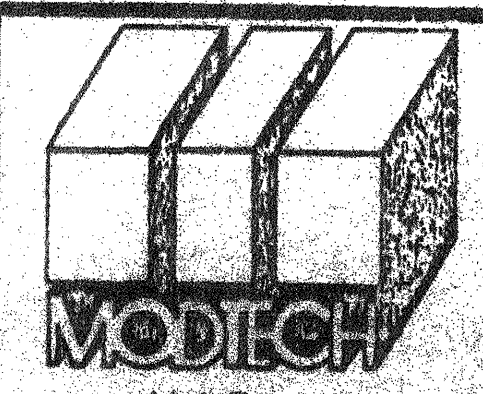
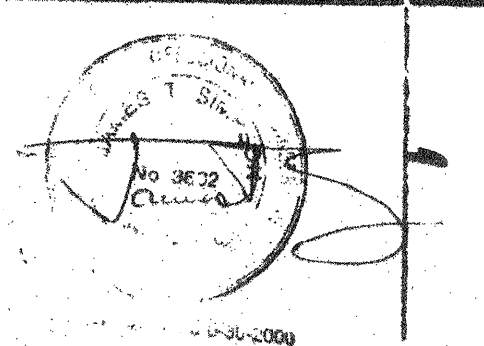
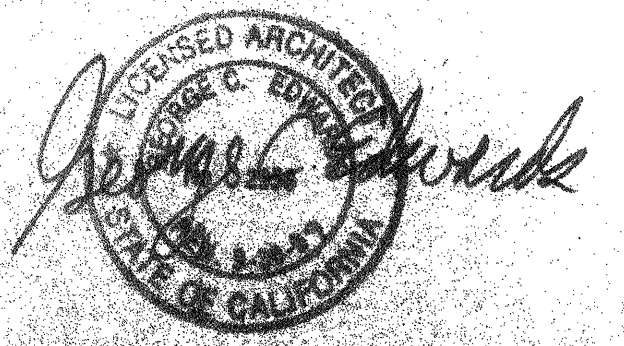
- KEY NOTES**
- 1 CAP-CLOSURE @ MODLINE 26GA. GALV. W/10 TYPE FASTENERS W/NEOPRENE WASHERS TO RIB BOTH SIDES OF MODLINE. SET CAP IN SEALANT
  - 2 5/8" M.B. A307 MODULE JOINT (SEE STRUCTURAL PLAN FOR LOCATION) @ 8" O.C.
  - 3 E.N.
  - 4 MODULE JOINT
  - 5 1/4" @ 8" O.C. FULL DEPTH STIFFENER PLATE (SEE 4/52.1)
  - 6 STANDING SEAM ROOF. (SEE A2.0)
  - 7 ROOF BEAM (SEE STRUCTURAL) SEE 3/52.1 & 12/52.1
  - 8 PLYWOOD FLOOR SHEATHING
  - 9 FLOOR JOIST 6/52.1
  - 10 FLOOR BEAM (SEE STRUCTURAL 5/52.1)
  - 11 HAND-HOLE @ BOLT LOCATION
  - 12 #14 STSMS
  - 13 3 1/2"x3 1/2"x1/4" STEEL TUBE COLUMN
  - 14 ROOF HEADER (SEE STRUCTURAL 1/52.1)
  - 15 1/4" STIFFENER PLANE SEE 9/52.1 FOR TYP. WELD
  - 16 CAP CLOSURE AT RIDGE 26GA. GALV. W/10 STSMS AT 48" O.C. W/NEOPRENE WASHER TO RIB SET BOTH SIDES OF CAP IN SEALANT
  - 17 NOT USED
  - 18 NOT USED
  - 19 NOT USED
  - 20 2"x2"x3/16" L
  - 21 3 1/4"x1"x45 11/16" LXIOGA CHANNEL TOP & BOTTOM CENTER OF OPENING
  - 22 ROOF PURLIN SEE 2/52.1
  - 23 TUBE STEEL (SEE NOTE #13)

PROJECT NO. 04 101555  
DATE SEP 09 1990

AGENCY TRACKING NO. 63321-201  
FILE NO. 15-6

IDENTIFICATION STAMP  
DIV. OF THE STATE ARCHITECT  
OFFICE OF REGULATION SERVICES  
03-1/17/83  
DATE SEP 13 2018

ARCHITECT ELECTRICAL STRUCTURAL MECHANICAL FIRE MARSHAL ACCESS COMPLIANCE STRUCTURAL SAFETY



© MODTECH INC. 1994  
DRAWN BY  
DATE 9/9/99  
CHECKED BY  
DATE

4012-094

S12

STRUCTURAL DETAILS

PC 275