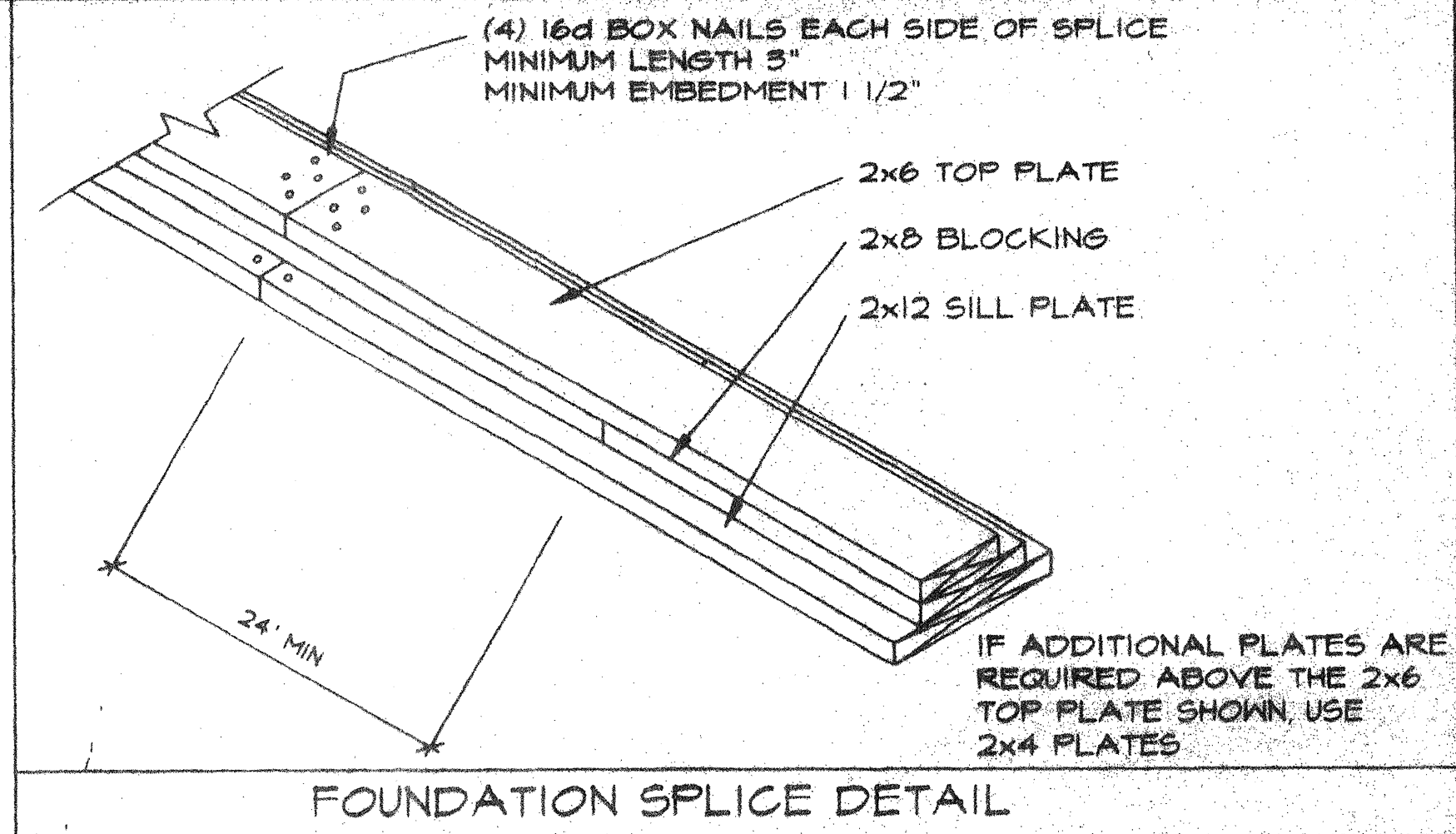
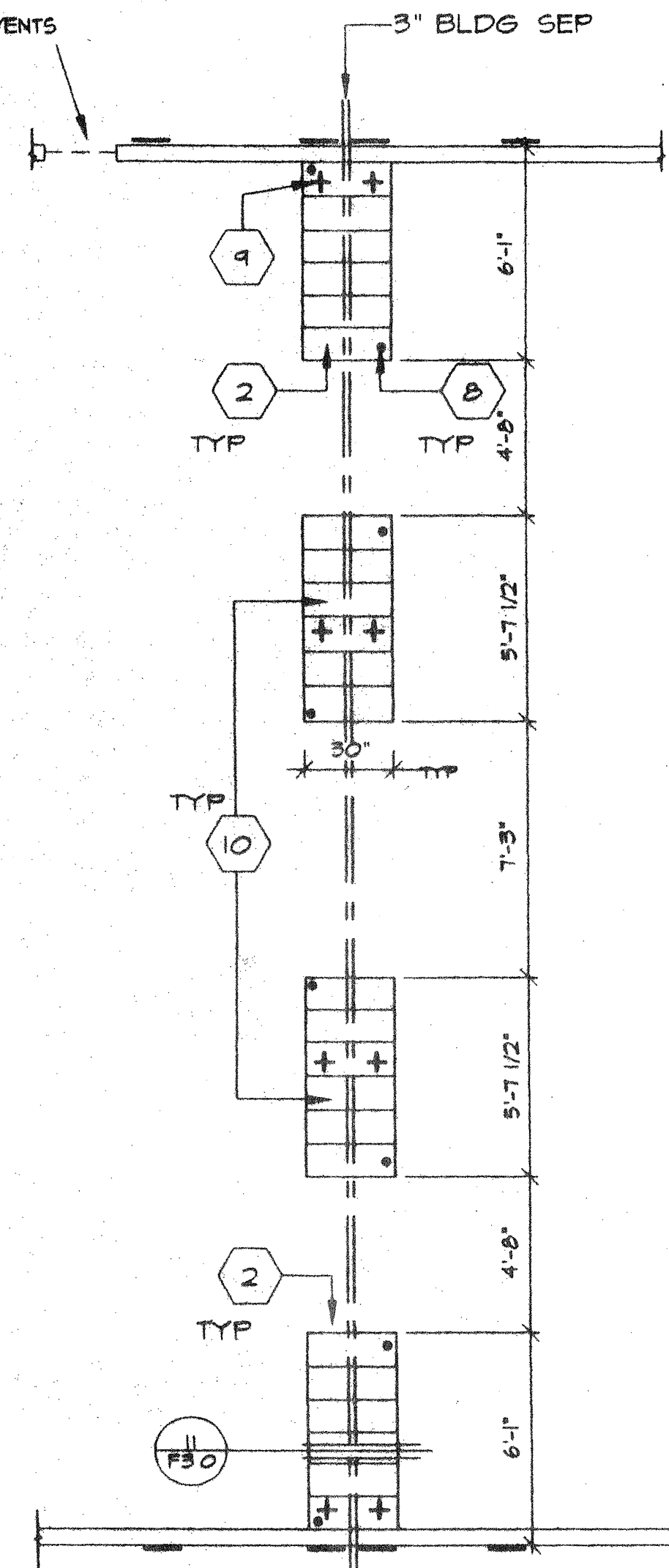


"MACHINE APPLIED 16d FASTENERS SHALL HAVE AN EMBEDMENT OF NOT LESS THAN 1 1/2" INTO SECOND MEMBER, AND SHALL BE NOT LESS THAN 3" IN OVERALL LENGTH"

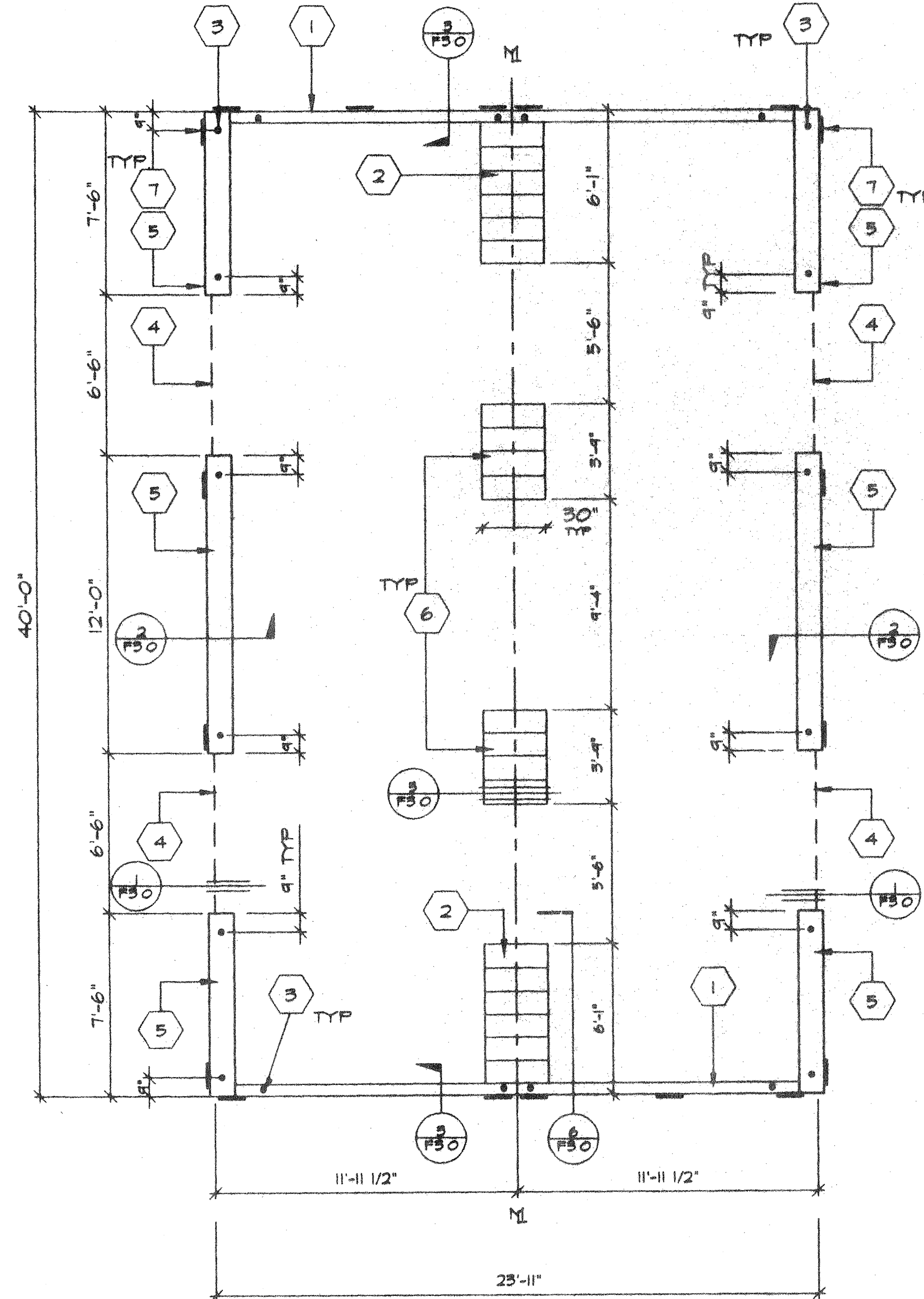
THE ABOVE NAILS SHALL ALSO BE ACCEPTABLE FOR HAND NAILING, PROVIDED THE REQUIRED EMBEDMENT IS MAINTAINED



3" x 24" END WALL VENTS AS REQUIRED FOR ADJACENT BUILDING APPLICATIONS  
MIN 18" FROM BLDG CORNERS  
MIN 18" FROM MOVLINES  
MIN 12" BLOCKING BETWEEN VENTS



PAD FTG'S AT ADJ BLDG



AGENCY TRACKING NO. 63321-201  
FILE NO. 15-6

IDENTIFICATION STAMP  
DIV. OF THE STATE ARCHITECT  
OFFICE OF REGULATION SERVICES

03-117283

AC: FLS: SS: [Signature]

DATE: SEP 13 2016

VENT CALCS.

BLD'S SIZE 24' X 40' = 960 sq  
VENTILATION REQ'D 960 + 150 = 64 sq  
3" X 6'-6" VENT = 625 sq  
4 VENTS X 1625 sq = 6500 sq  
6500 > 64 sq

KEY NOTES

- 1 2"x6" SILL PLATE (END WALL)
- 2 6- 2X12X30" LONG SILL PADS
- 3 PIPE TO GRADE (TYP)
- 4 3" HIGH BY 6'-6" LONG VENT
- 5 2X12 SILL PLATE (SIDE WALL)
- 6 4-2X12X30" LONG SILL PADS
- 7 6"x12"x10 GA PLATES
- 8 1" Ø PIPE EA END EA PAD AT ADJ BLDG LINE
- 9 5/8" Ø X4" LAG (4-PER BLDG MIN)
- 10 6- 2X12X30" LONG SILL PADS

NOTES

- 1 SILL RESTRAINT ON AC PAVING AND ON SOIL 1" O.D. GALVANIZED PIPE AT 10'-0" 12" PENETRATION BELOW SURFACE VERTICALLY DRILL SILL 1-1/4" MAX PIPE MAY BE DRIVEN MAX OF 45° ANGLE TO VERTICAL (18-1/2" LONG PIPE REQUIRED FOR PENETRATION AT 45° ANGLE)
- 2 ON CONCRETE PAVING HILTI DS 82-PIØ THRU SILL PLATE  
END WALLS 8" O.C  
SIDE WALLS 22" O.C
- 3 WHERE SHIM STOCK IS REQUIRED FOR LEVELING USE 1/4", 1/2", OR 3/4" THICK PLYWOOD SAME WIDTH AS BLOCK P.T
- 4 VERIFY DRAINAGE TO PREVENT WATER FROM PONDING BENEATH THE STRUCTURE, WITH DISTRICT ARCHITECT SITE PLANS
- 5 ALL FOUNDATION MATERIAL SHALL BE HEM FIR  
GROUND CONTACT: LP-22 (CCA 40)  
ABOVE GROUND: LP-2 (CCA 25)
- 6 FOUNDATION DESIGNED FOR 1000 PSF SOIL BEARING PRESSURE PER ORS IR 23-6  
ABOVE GROUND: LP-2

FOUNDATION (WOOD SILL)

24 x 40 - 50 PSF LL

SCALE 1/4"=1'-0"

4012-094

REVISIONS

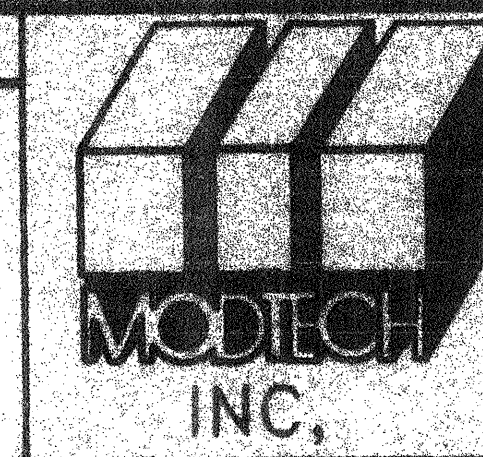
ELECTRICAL

MECHANICAL

STRUCTURAL

ARCHITECT

DIVISION OF THE STATE ARCHITECT



MODTECH INC.  
2830 BARRETT AVE  
PERRIS, CA 92572  
PH (909) 943-4014  
FX (909) 940-0427

JOB NO. 3278

04 101555

AC: FLS: SS: [Signature]

DATE: SEP 9 2016

FO.1

FOUNDATION PLAN

CONFIDENTIAL - THIS DOCUMENT AND THE INFORMATION CONTAINED HEREIN ARE THE PROPERTY OF MODTECH INC. UNAUTHORIZED COPYING, DISCLOSURE, OR OTHER UNAUTHORIZED USES ARE PROHIBITED