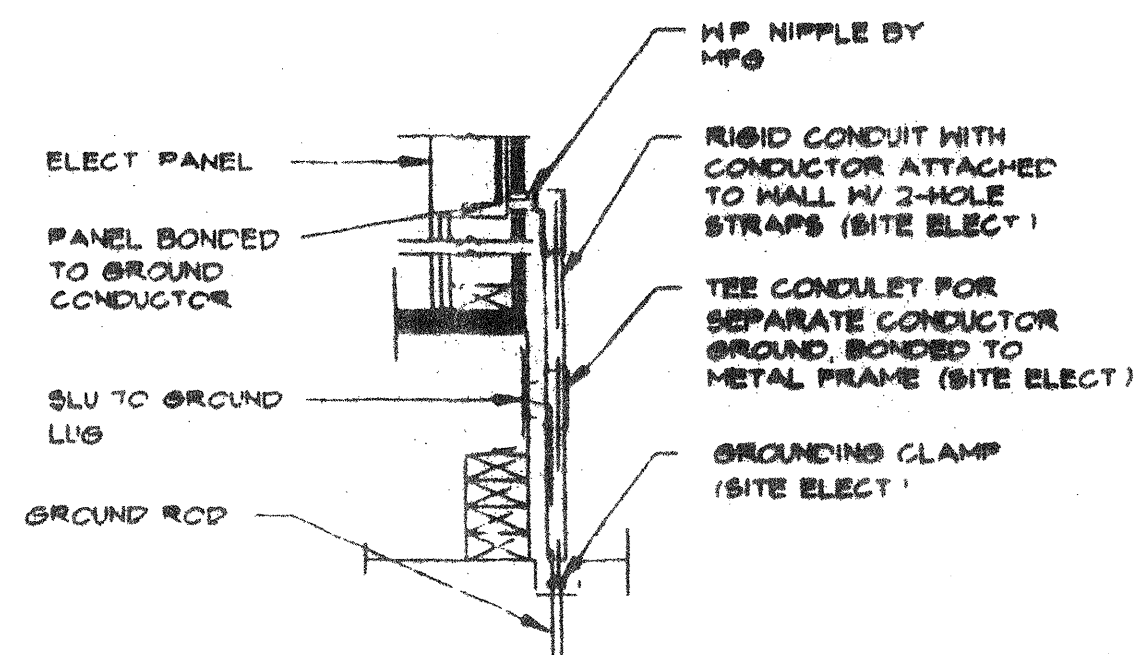


JUMPER @ MOD. LINE



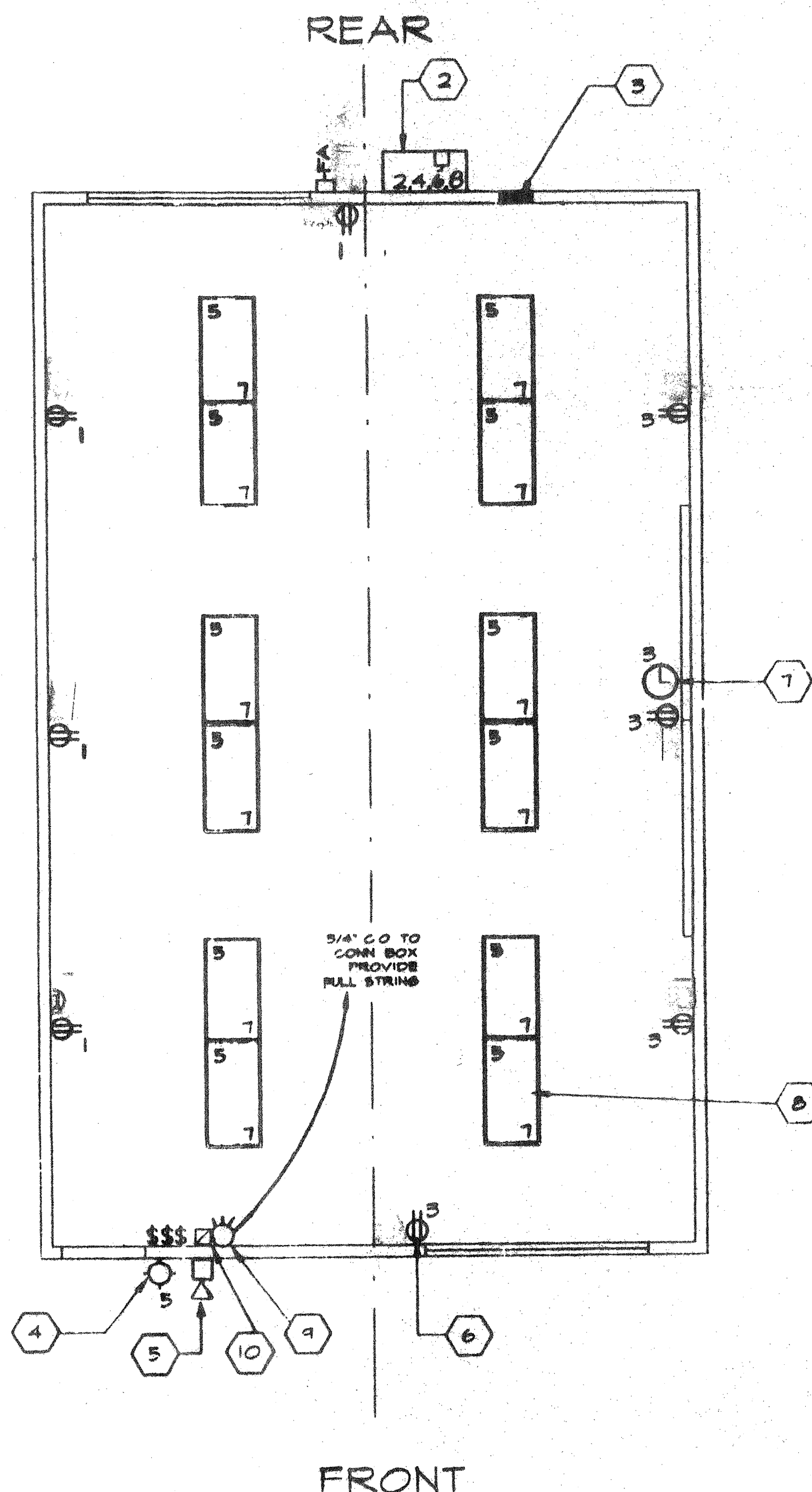
TYP. GROUNDING DETAIL

- EACH BUILDING SHALL BE SEPARATELY GROUNDED WITH A 3/4" RD. X 8' CORRUGATED STEEL GROUND ROD. WHERE ROCK BOTTOM IS ENCOUNTERED, ROD SHALL BE DRIVEN AT AN ANGLE NOT TO EXCEED 45 DEGREES FROM THE VERTICAL OR SHALL BE BURIED IN A TRENCH THAT IS AT LEAST 30" DEEP (BY SITE ELECTRICAL)
- TESTING: TEST FOR RESISTANCE TO GROUND. IF RESISTANCE EXCEEDS 25 OHMS, INSTALL ADDITIONAL GROUND RODS SEPARATED AT LEAST 6'-0" UNTIL RESISTANCE IS REDUCED TO 25 OHMS OR LESS (BY SITE ELECTRICAL)
- PROVIDE EQUIPMENT ANCHORAGE PER TITLE 24 TABLE 16 J, PART B
- APPROVAL OF THIS PLAN DOES NOT CONSTITUTE APPROVAL OF THIS FIRE ALARM FOR ALL SITES. THE FIRE ALARM SYSTEM AND/OR COMPONENTS MAY BE REQUIRED TO BE CHANGED DUE TO SITE LOCATION, EXISTING CONDITIONS OR INCOMPATIBLE COMPONENTS
- GROUND MS TEST SHALL BE DONE IN THE PRESENCE OF THE PROJECT INSPECTOR. GROUNDING SHALL BE IN ACCORDANCE NVC E.C. ARTICLE 250

VOLTS: 120/240 V		PANEL: A		FEED BOTTOM	
MAIN: 100 A (HOM 120H 100C SQD)		LOCATION:		MOUNTING: RECESSED	
LOAD	WATTS	BREAKER	PHASE	WATTS	LOAD
RECEPTACLES	720	20	1	2 30 2	3360 HVAC (3 1/2 TON)
RECEPTACLES & CLOCK	900	20	3	4 - -	3360 HVAC (3 1/2 TON)
INT./EXT. LIGHTS	900	20	5	6 30 2	2500 HEAT STRIPS 5 KW
INT./LIGHTS	840	20	7	8 - -	2500 HEAT STRIPS 5 KW
FIRE ALARM	40		9		
			11		
			13		
			15		
			17		
WATTS/PHASE A = 7,520	1660	1740		5860	5860 B = 7,600 WATTS/PHASE
TOTAL 15,555 WATTS	65	AMPS	120/240	VOLTS	1 Ø 3 WIRE
NCL = 13,380					

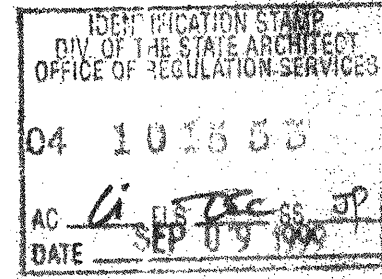
KEY NOTES

- NOT USED
- HVAC UNIT [HV]
- ELECTRICAL PANEL "A"
- EXTERIOR LIGHT FIXTURE
- 4s JUNCTION BOX FOR FIRE ALARM EXT HORN (ROUGH IN ONLY)
- DUPLEX WALL RECEPTACLE 15-A 125-V 3-WIRE
- CLOCK OUTLET (SEE SPEC'S)
- 2' x 4' FLUORESCENT LIGHT AND FIXTURE 4-TUBE (SEE SPEC'S)
- 4s JUNCTION BOX FOR FIRE ALARM INT HORN/STROBE (ROUGH-IN ONLY)
- 4s JUNCTION BOX FOR FIRE ALARM PULL STATION
- NOT USED



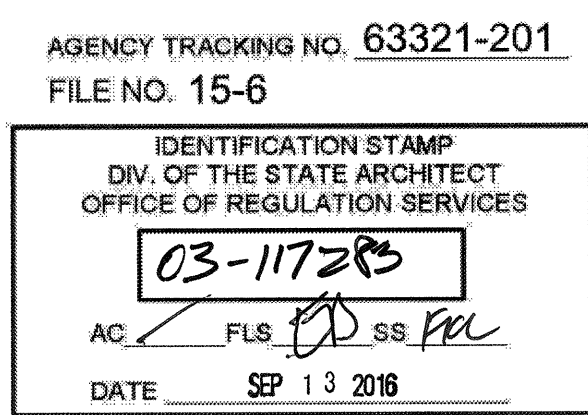
ELECTRICAL PLAN

SCALE 1/4"=1'-0"



ELECTRICAL LEGEND

- 2'x4' 4 TUBE FLUORESCENT LIGHT FIXTURE
- EXTERIOR LIGHT FIXTURE AT +93" AFF
- DUPLEX WALL RECEPTACLE 15-A 125-V 3-WIRE AT +18" AFF
- HVAC UNIT [HV]
- 4s J-BOX FOR INT. FA PULLSTATION. +48" A.F.F. 3/4" CO TO [ ] PULLSTRING
- 4s J-BOX FOR EXT. JFA HORN. + 102" A.F.F. 3/4" CO TO [ ] FA. PULLSTRING
- 5x6x4 EXT. WP GUTTER BOX. + 18" A.F.F. FA- RECEIVE 3/4" CO FROM [ ] PULLSTRING DATA- 3/4" CO TO STUB IN ATTIC. PULLSTRING (NOT APPLICABLE)
- ELECTRICAL PANEL AT +60" AFF TO CENTERLINE 1 1/4" POWER NIPPLE POC, GND JUMPER BY SITE ELECT.
- SWITCH AT +48" AFF
- CLOCK AT +90" AFF
- 4s J-BOX FOR INT. FA HORN/STROBE. +80" A.F.F. 3/4" CO TO [ ] PULLSTRING



**SCHOOL EQUIPMENT ANCHORAGE**  
THE FOLLOWING IS FOR THE ARCHITECTS INFORMATION ONLY

THE SEISMIC ANCHORAGE OF ELECTRICAL EQUIPMENT SHALL CONFORM TO C.C.R. TITLE 24, SECTION 18304.2(a) AND TABLE 16A-0. ANCHORAGE DETAILS FOR ROOF/FLOOR MOUNTED EQUIPMENT HEAVIER THAN 400 LBS. AND HUNG EQUIPMENT HEAVIER THAN 20 LBS. MAY BE OMITTED FROM THE PLANS

**FOR ELECTRICAL DRAWINGS**  
ALL ELECTRICAL EQUIPMENT SHALL BE BRACED OR ANCHORED TO RESIST A HORIZONTAL FORCE ACTING IN ANY DIRECTION USING THE FOLLOWING CRITERIA

EQUIPMENT ON GRADE	20% OF OPERATING HEIGHT
EQUIPMENT ON STRUCTURE	50% OF OPERATING HEIGHT

FOR FLEXIBLY MOUNTED EQUIPMENT USE 4 X THE ABOVE VALUES AND FOR SIMULTANEOUS VERTICAL FORCE USE 1/3 X THE HORIZONTAL FORCE

THE ABOVE VALUES ARE FOR AN IMPORTANCE FACTOR I = 1.0 AND SEISMIC ZONE 1, 2 + 0.4

WHERE ANCHORAGE DETAILS ARE NOT SHOWN ON THE DRAWINGS THE FIELD INSTALLATION SHALL BE SUBJECT TO THE APPROVAL OF THE ARCHITECT AND THE FIELD ENGINEER OF THE OFFICE OF THE STATE ARCHITECT

REVISIONS	ELECTRICAL	MECHANICAL	STRUCTURAL	ARCHITECT	DIVISION OF THE STATE ARCHITECT	MODTECH INC. 2830 BARRETT AVE. PERRIS, CA. 92572 PH. (909) 943-4014 FX. (909) 940-0427	DATE	4012-094	