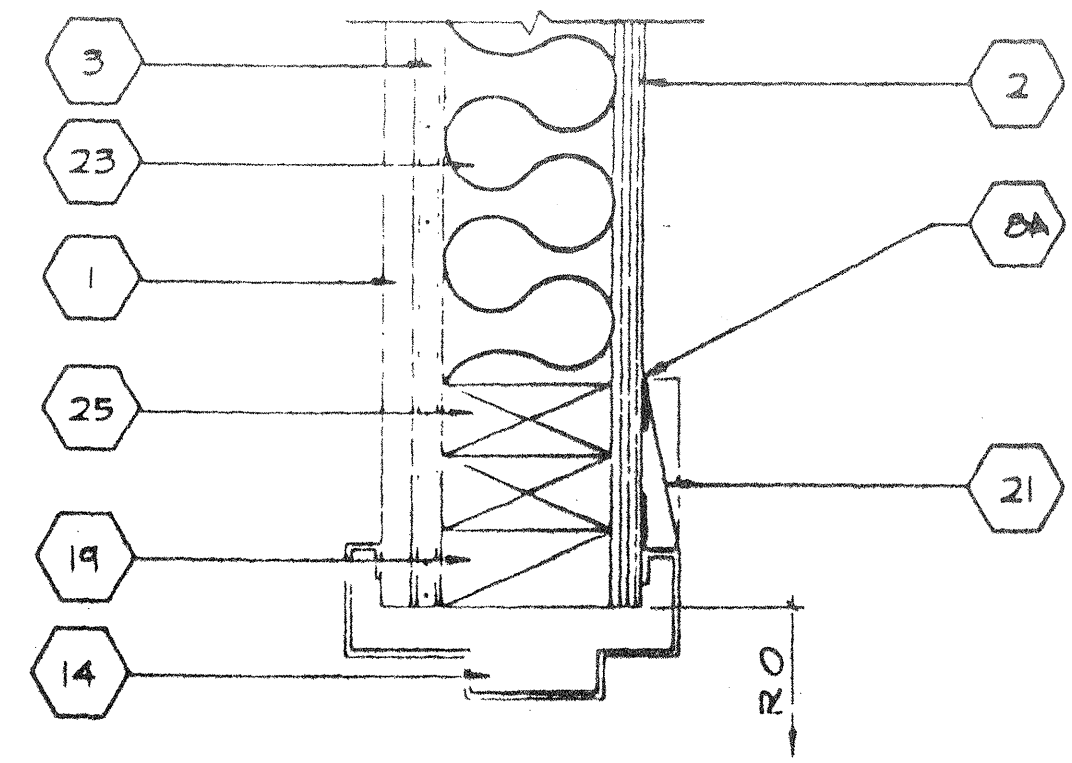
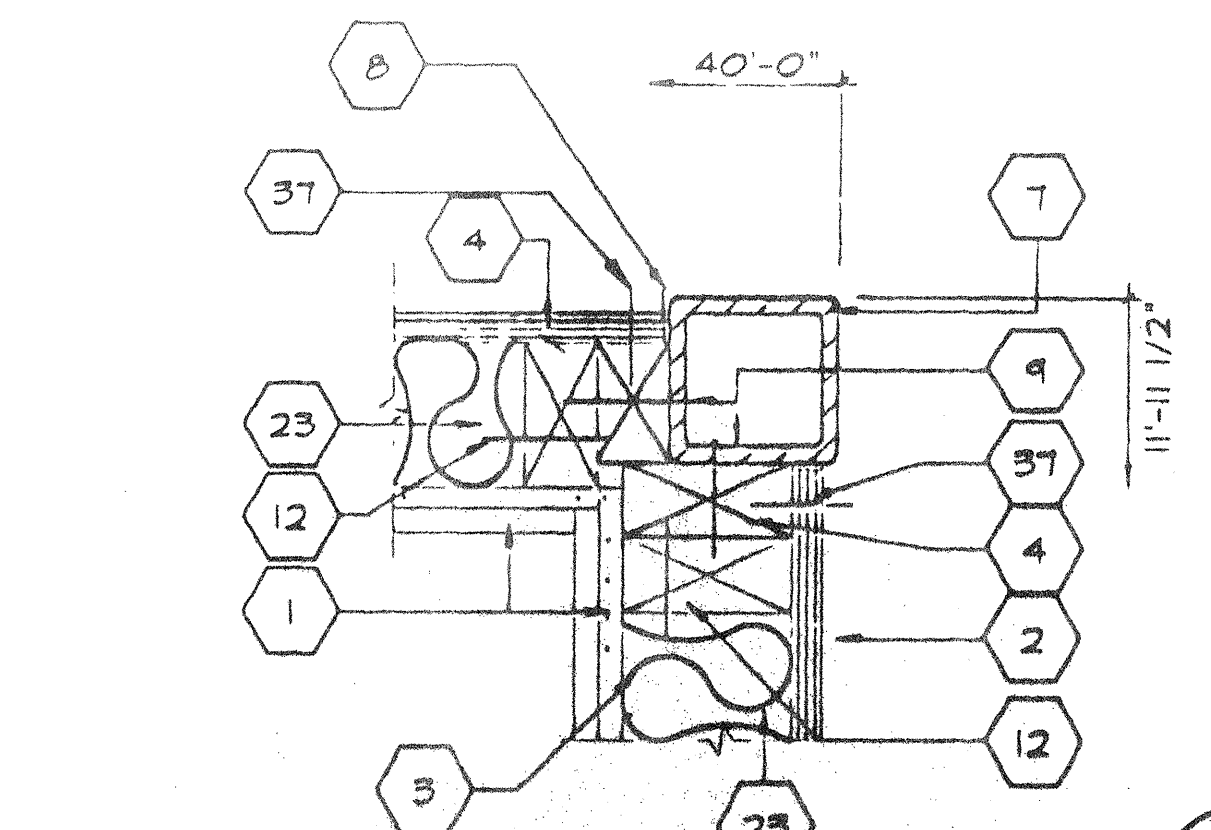


SCALE: 1-1/2"=1'
SILL PLATE (12)



SCALE: 3"=1'
DOOR JAMB (8)



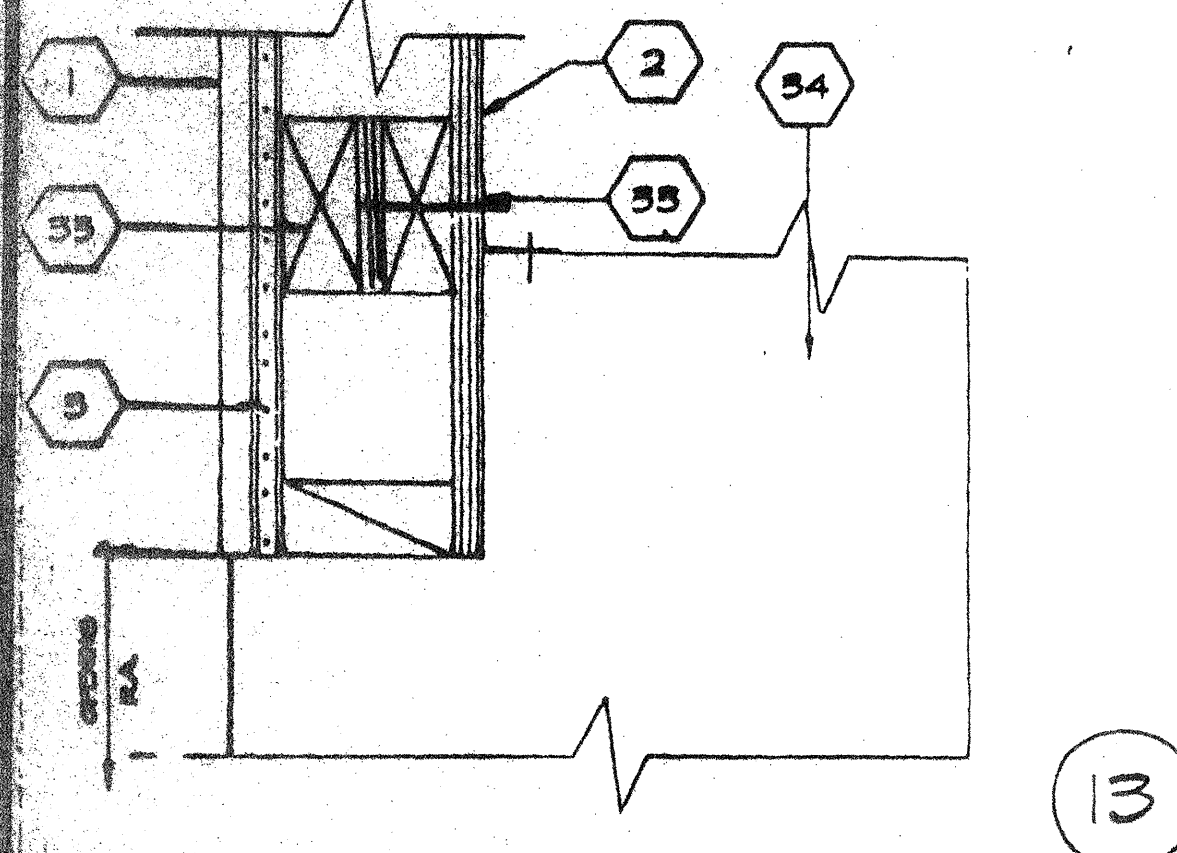
SCALE: 3"=1'
CORNER COLUMN (4)

36 2X6 LET-IN (SEE WALL FRAMING SHT 55 0)
 57 EN 8d BOX ELEGRO GAL @ 6" OC MAX
 FN @ 12" OC MAX
 38 CLOSURE SCREEN
 39 CORNER MOLDING
MANUFACTURE NOTE:
MARVAIR, BARD, NORDYNE
 PRE-APPROVED INSTALLATION AS DESIGNED BY MFG.

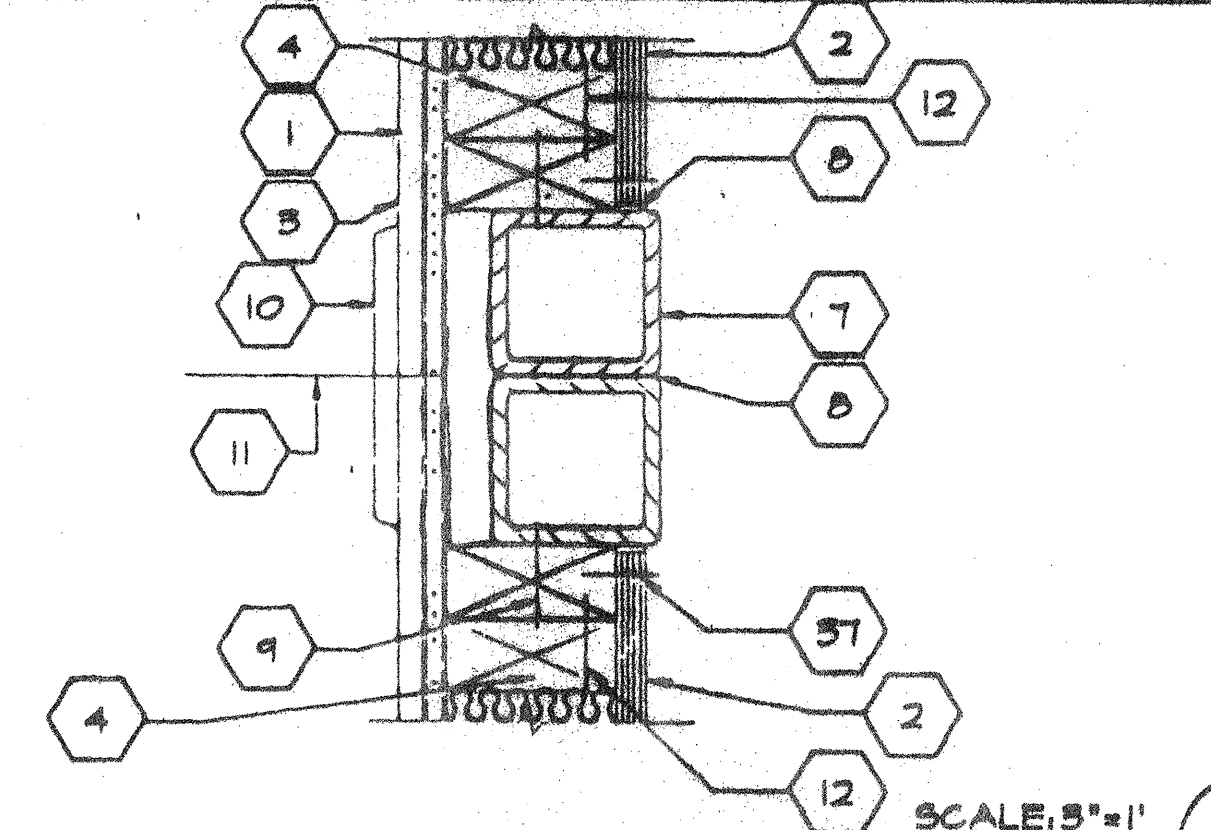
NOTES
 A EN 8d ELEGRO GAL @ 6" OC.
 B FN 8d ELEGRO GAL @ 12" OC.

KEY NOTES

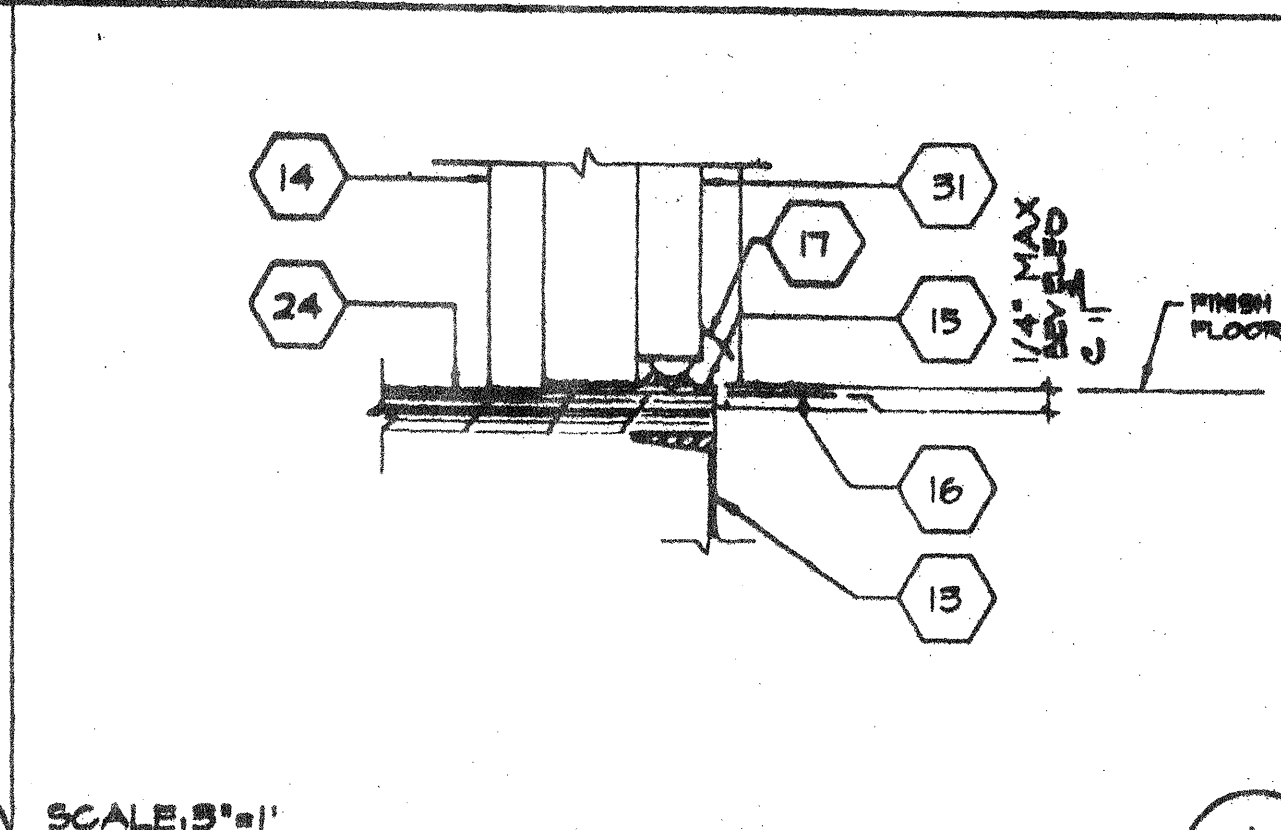
- 1 TYP INTERIOR FINISH (SEE FINISH SCHED)
- 2 TYP EXTERIOR FINISH
- 3 1/2" GYPSUM BOARD BACKING W/ Td COOLER NAILS @ MAX 24" OC TYP @ EA STUD
- 4 2X4 STUD TYP @ 16" OC MAX
- 5 16d @ 16" OC MAX
- 6 DRIP FLASH
- 7 TUBE STEEL COLUMN (SEE STRUCTURAL)
- 8 SEALANT (TYP) 8A SEALANT BEHIND TRIM
- 9 NO STDS @ MAX 24" OC 2X FILLER @ COLUMN SEE STRUC FOR CONN (ALT HILT DMS2 PD SHOT PIN)
- 10 VINYL CLOSURE
- 11 MODULE JOINT
- 12 16d @ 24" OC FACE NAIL OR 16d @ 12" OC TOE NAIL
- 13 FLOOR BEAM (SEE STRUCTURAL)
- 14 PRESSED STEEL FRAME (K.D. TYPE SEE AS 0)
- 15 ALUMINUM THRESHOLD (SEE HARDWARE SCHEDULE)
- 16 FINISH LANDING SEE FLOOR PLAN & FOUNDATION FOR TYPE AND FINISH
- 17 DOOR BOTTOM (SEE HARDWARE SCHEDULE)
- 18 (2) 2X4 KING STUD (SEE SHT 55 0 TABLE 25Q FOR NAILING)
- 19 2X4 TRIMMER (SEE SHT 55 0 TABLE 25Q FOR NAILING)
- 20 "J" MOLD 26 GA
- 21 1X4 WOOD TRIM W/8d ELECTRO GALV @ 12" OC
- 22 2-2X4 SILL PLATE W/16d @ 16" OC
- 23 INSULATION (SEE SPECS FOR SIZE AND TYPE)
- 24 FINISH FLOORING (SEE FINISH SCHEDULE SHT. A5 0)
- 25 2X4 JAMB STUDS (SEE SHT 55 0 DETAILS FOR NUMBER OF STUDS REQUIRED AND TABLE 25Q FOR NAILING)
- 26 WINDOW GLAZING (SEE WINDOW SCHEDULE SHEET AS 0)
- 27 AIR CONDITION UNIT BOTTOM SEAT 1200" x 24" Lx W/1/2" x 2" x 2" Lx Wx Hx Mx Lx
- 28 ALUMINUM WINDOW FRAME WITH NAIL-ON FINISH. INSTALL WITHIN 5" BLDG PAPER BTM. FIN AND FRAMING. INSTALL WITH 8d @ MAX 24" OC
- 29 16d BOX STAGGERED @ MAX 24" OC
- 30 HEADER (SEE SHT 55 1 WALL FRAMING DETAILS)
- 31 DOOR (SEE DOOR SCHED)
- 32 SEE SHEET 55 1 FOR TYPICAL WALL FRAMING NAILING
- 33 ATTACHMENT BRACKET (SEE MFG. NOTE ABOVE OR USE MFG 91D.)
- 34 HVAC UNIT (SEE SHEET M-1)
- 35 2-2X4 FULL HT STUDS



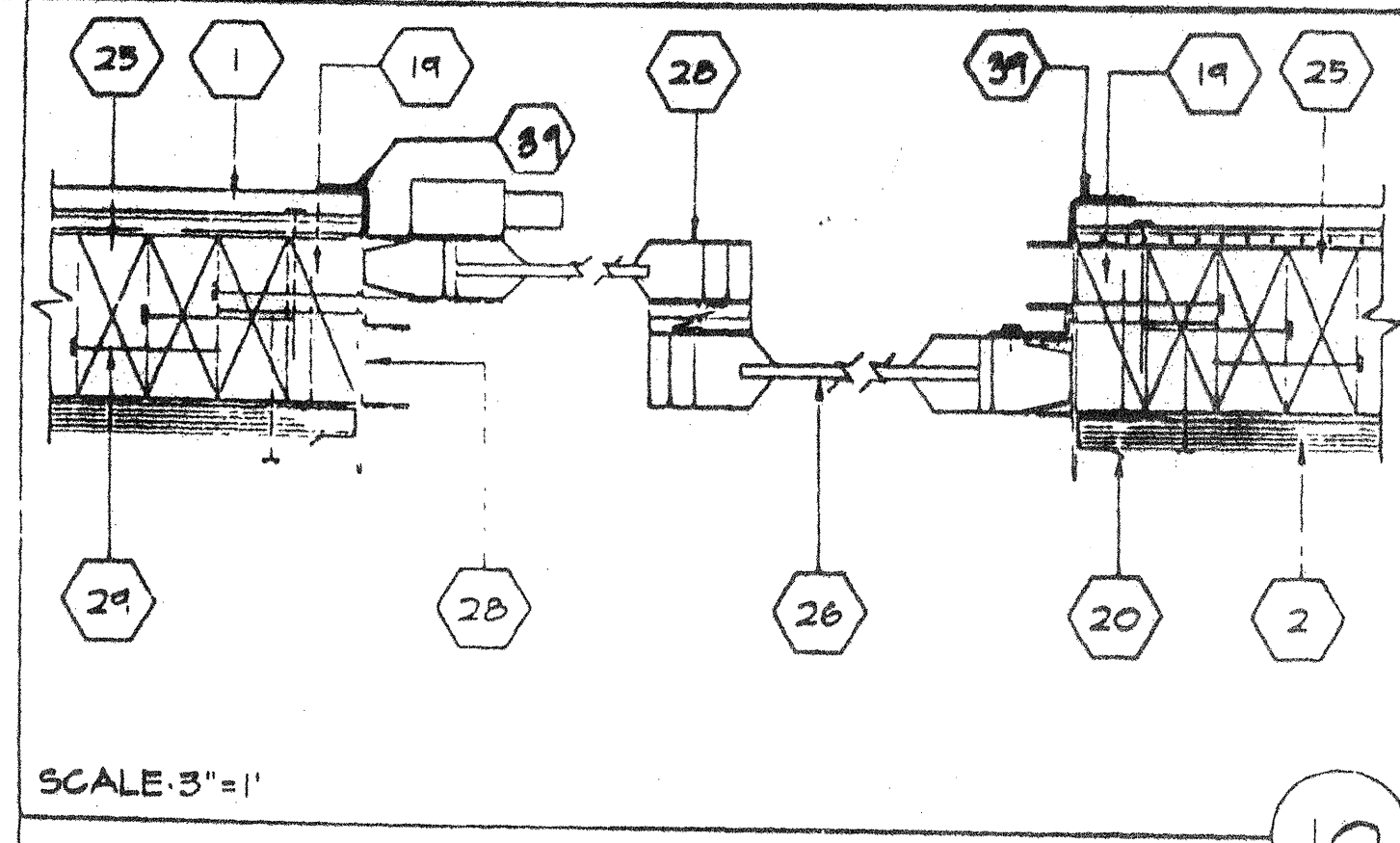
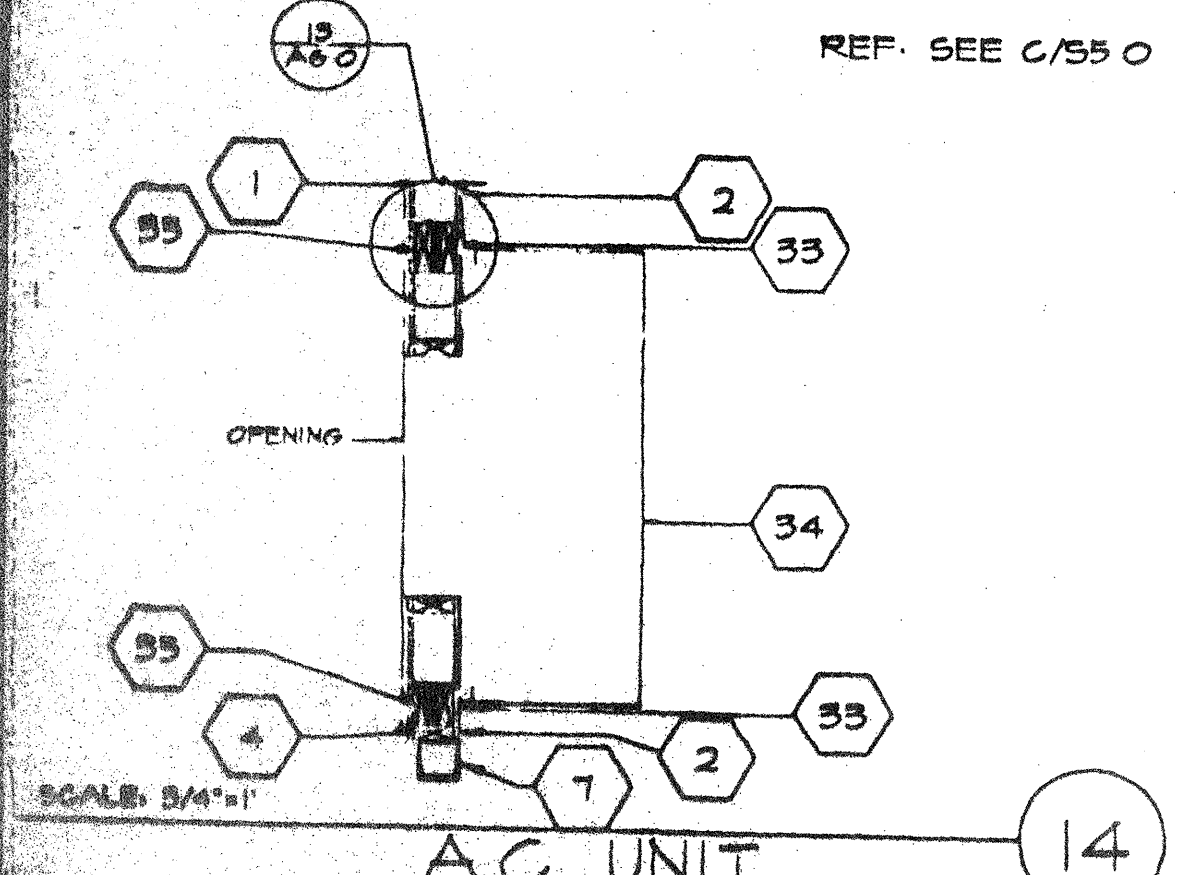
SCALE: 3"=1'
EXTERIOR DOOR JAMB @ CORNER (9)



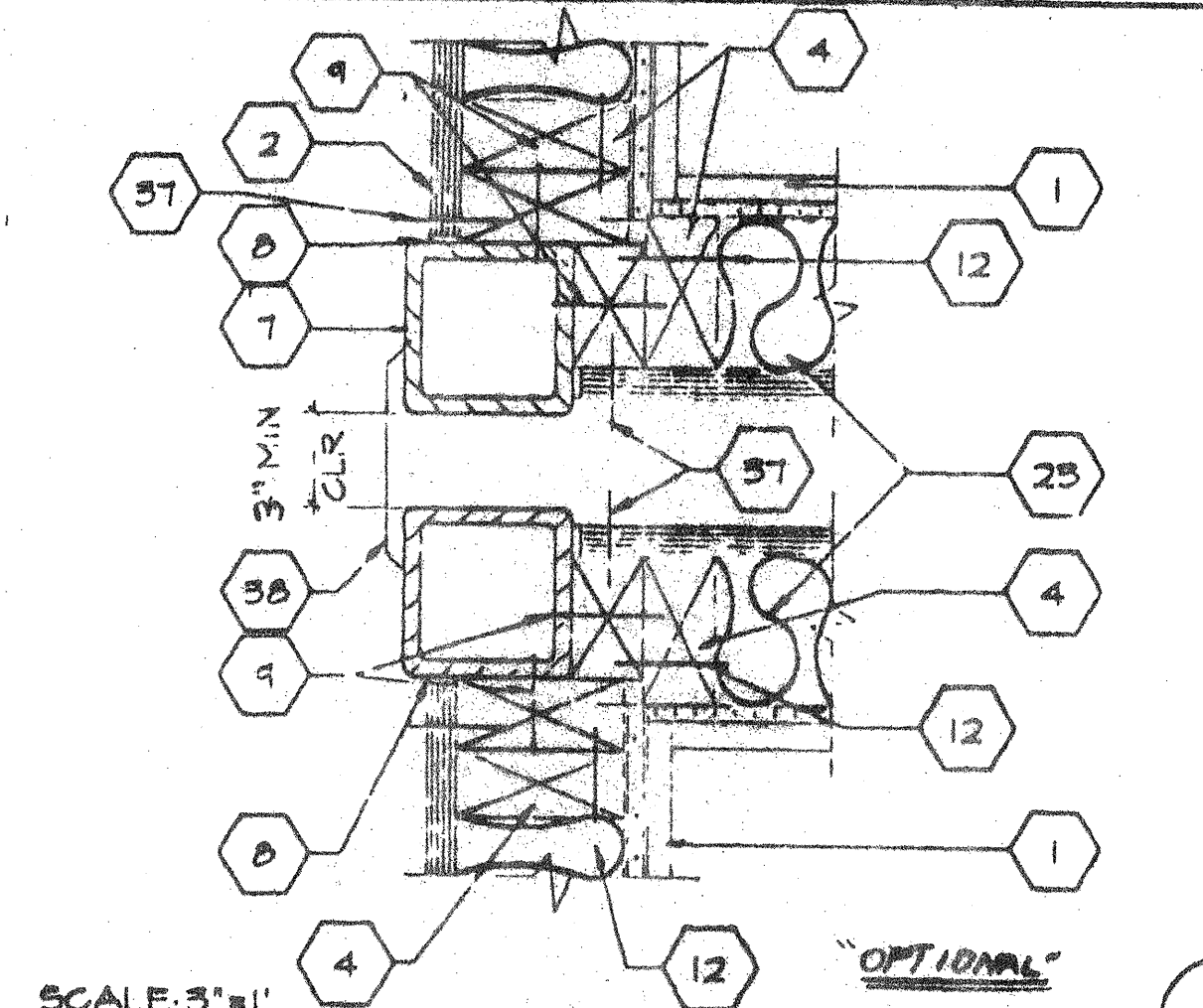
SCALE: 3"=1'
COLUMN @ MODLINE (5)



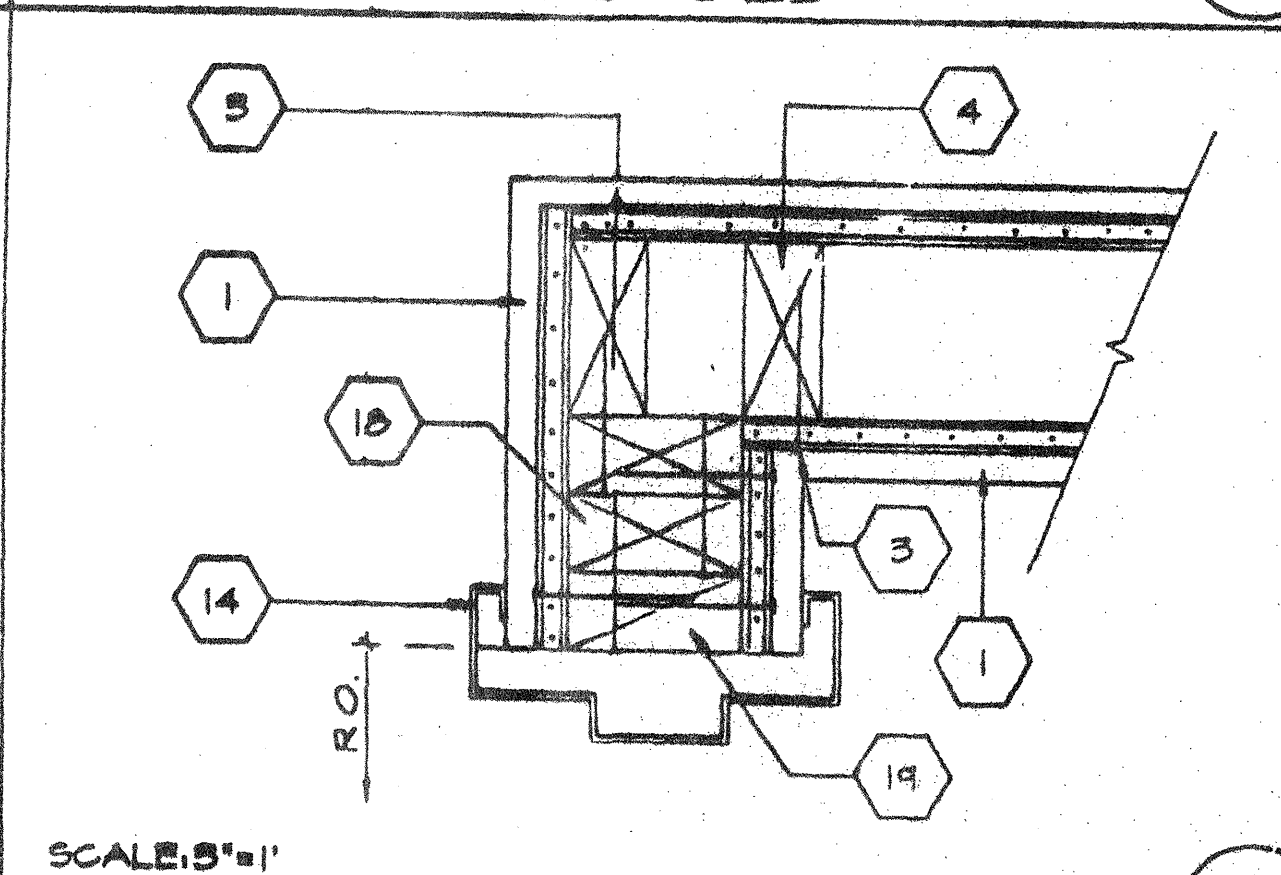
SCALE: 3"=1'
THRESHOLD (1)



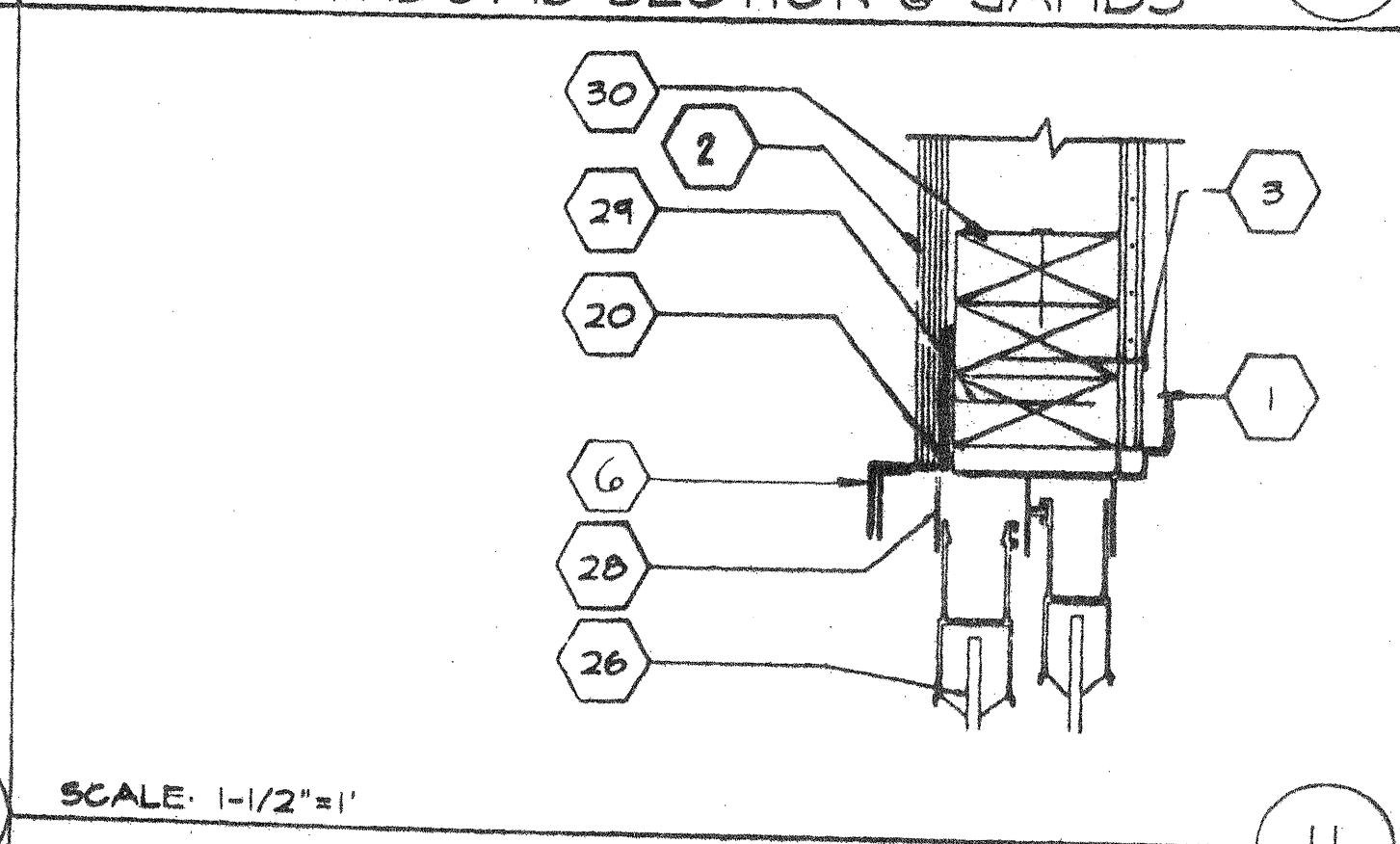
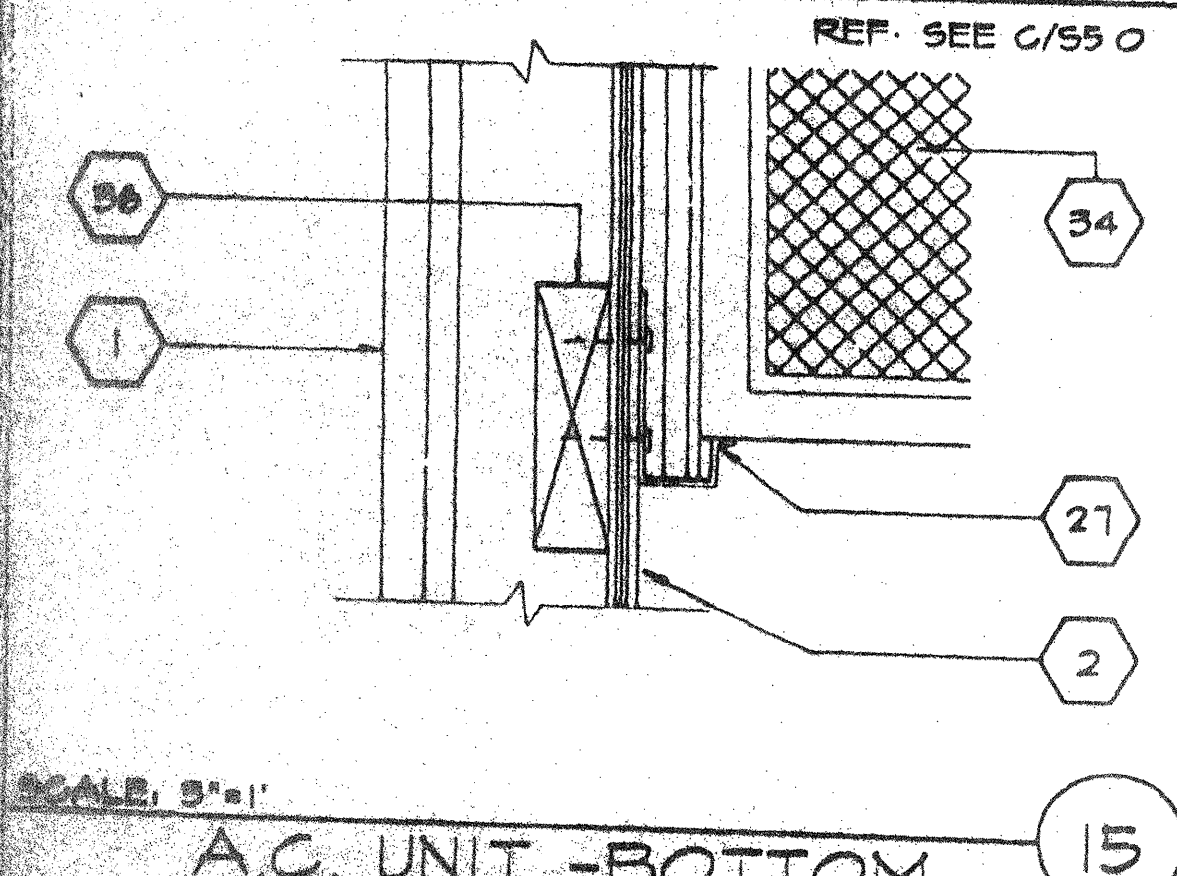
SCALE: 3"=1'
WINDOWS SECTION @ JAMBS (10)



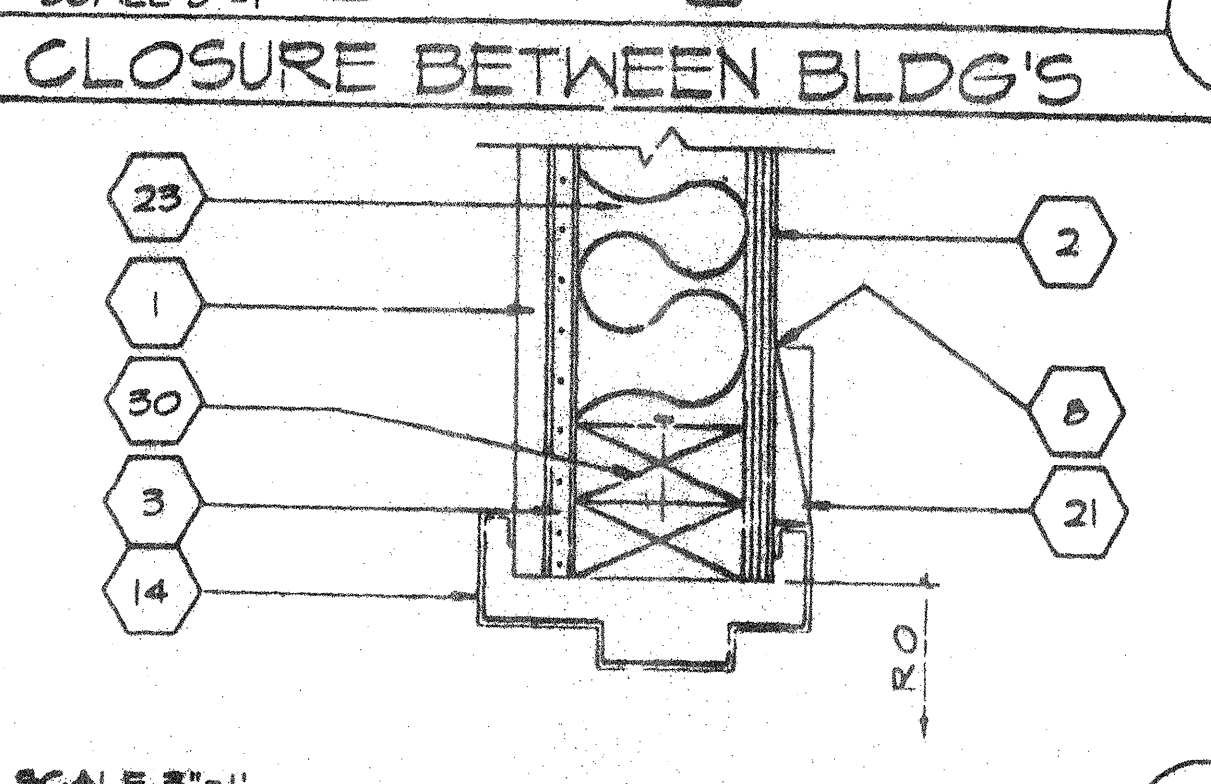
SCALE: 3"=1'
CLOSURE BETWEEN BLDG'S (6)



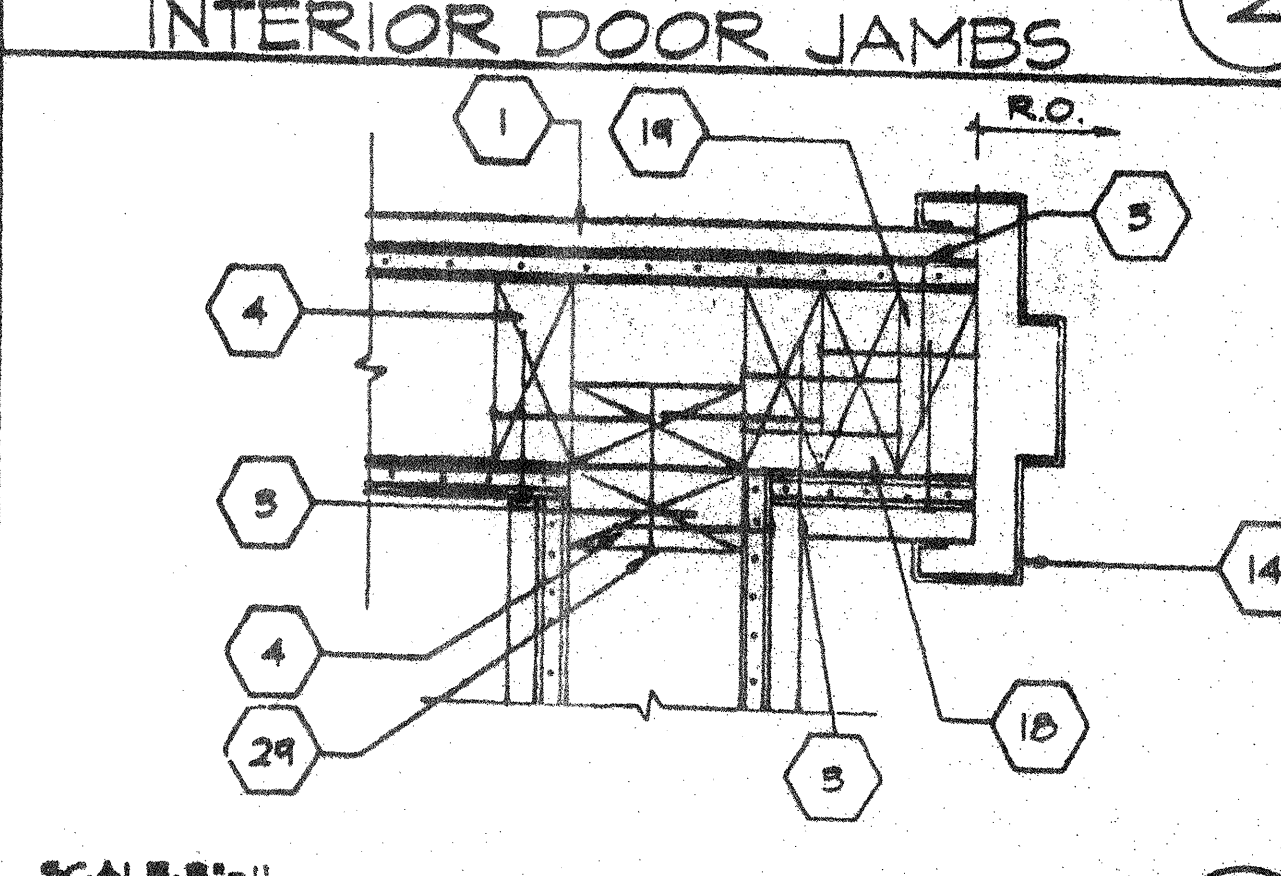
SCALE: 3"=1'
INTERIOR DOOR JAMBS (2)



SCALE: 1-1/2"=1'
WINDOW HEADER (11)



SCALE: 3"=1'
EXTERIOR DOOR HEADER (7)



SCALE: 3"=1'
INTERIOR DOOR JAMBS (3)

SCALE: 3"=1'
A.C. UNIT - BOTTOM (15)

ARCHITECT

ELECTRICAL
 STRUCTURAL
 MECHANICAL
 FIRE MARSHAL
 ACCESS COMPLIANCE
 STRUCTURAL SAFETY

PC-275

3278
 © MOOTECH INC. 1994
 DRAWN BY: a/a/99
 DATE: 9/1/99
 CHECKED BY: [Signature]
 DATE: [Blank]

AGENCY TRACKING NO. 63321-201
 FILE NO. 15-6
 IDENTIFICATION STAMP
 DIV. OF THE STATE ARCHITECT
 OFFICE OF REGULATION SERVICES
 03-117283
 DATE: SEP 13 2016