

DOOR SCHEDULE

DOORS				FRAMES				NOTE NO.
DOOR NO.	FRAME OPENING SIZE	MATERIAL	TYPE	FIRE PROTECTION RATING	HARDWARE SET NO.	MATERIAL	HEAD DETAIL	
1	3'-0" X 6'-8"	HM	A		1	HM	10/A60/11/A60/12/A60	3-1/8"

DOOR NOTES

- NOTES:**
- DOOR HANDLES FOR LOCKSETS TO BE CENTERED @ 36" AFF. & DEADBOLTS @ 44" AFF.
 - HARDWARE TO BE OPENABLE FROM THE INSIDE WITHOUT ANY SPECIAL KNOWLEDGE OR EFFORT. LEVERS TO RETURN TO WITHIN 1/2" OF DOOR.
 - ALL DOORS SHALL BE 1-3/4" THICK, U.N.O.
 - DOUBLE LETTERS IN SCHEDULE, INDICATES A PAIR OF DOORS.
 - SAFETY GLASS, CLEAR
 - FIRE GLASS
 - UNDERMOUNT DOOR
 - RHODES LEVER
 - FUSIBLE LINK LOWER
 - VISION PANEL
 - CLOSURE SHALL BE SET FOR MAX. OPENING PRESSURE OF 0.5 LBS @ EXTR. OR 1.5 LBS @ INT. DRS.

ROOM FINISH SCHEDULE

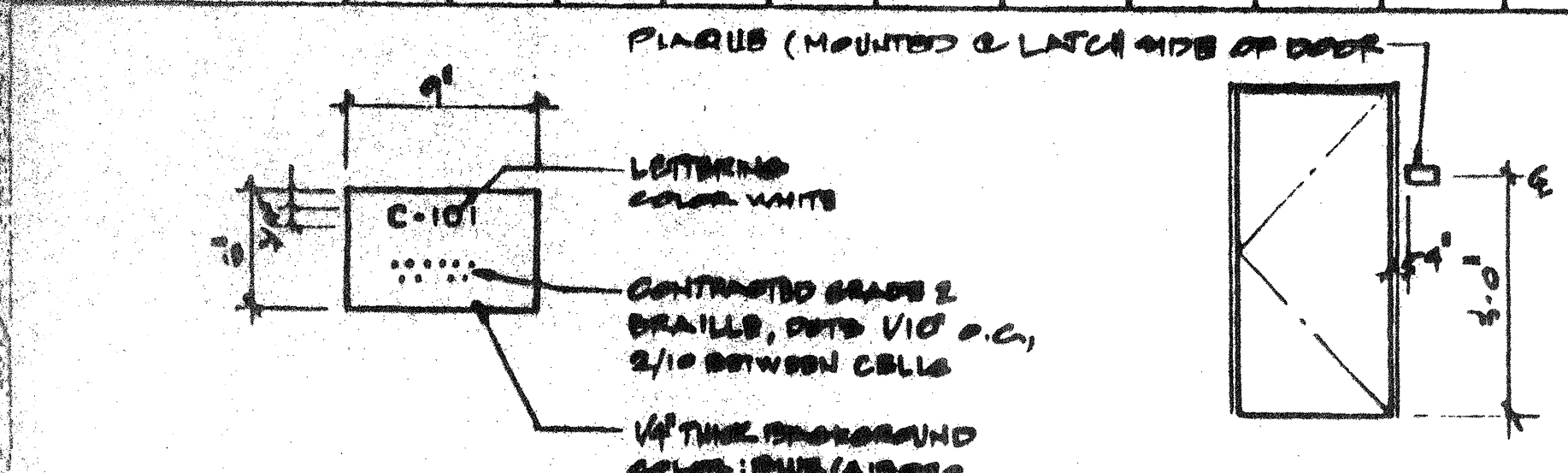
ROOM NO.	ROOM NAME OF AREA	FINISHES				REMARKS	MATERIAL & FINISH KEY	NOTES
		FLOOR	BASE	WALLS	CEILING			
1	CLASSROOM	A	D	F	F			

- FINISHES**
- WALLS**
- CEILING**
- CEILING HEIGHT**
- REMARKS**
- MATERIAL & FINISH KEY**
- (A) - CARPET PER STATE OF CALIFORNIA SPEC. COMPLYING WITH GROUP 1, TYPE A OR TYPE B, CLASS 2, DENSITY 4600, DIRECT GLUE DOWN
 - (B) - RESILIENT - SPECIFY OR EQUAL
 - (C) - VCT - ARMSTRONGS STANDARD OR EXCELON
 - (D) - 4" BURKE TOPSET BLOE
 - (E) - 6" BRIGANTINE OR SANDOVAL
 - (F) - 1/2" VINYL TACKBOARD CLASS 1 OVER 1/2" GYP. BOARD BACKING
 - (G) - 1/2" H.R. GYP. BOARD TAPE TEXTURE WITH PAINTED FINISH
 - (H) - 5/8" H.R. GYP. BOARD TAPE TEXTURE WITH PAINTED FINISH
 - (I) - 1/2" GYP. BOARD TAPE TEXTURE WITH PAINTED FINISH
 - (J) - 5/8" GYP. BOARD TAPE TEXTURE WITH PAINTED FINISH
 - (K) - 1/8" MARLITE OVER 1/2" H.R. GYP. BOARD
 - (L) - ACOUSTICAL LAT IN GRID CEILING PANELS (SEE SPECIFICATIONS)

NOTES

DOOR SPECS EXTERIOR FRAME SPECS SEE SPEC'S

WINDOWS SPECS 8040 XOX ANODIZED ALUM. OR ALUM. DUAL GLAZING 7/32" MIN. TEMPERED GLASS OF SOLAR GRAY WITH A LIGHT TRANSMISSION FACTOR OF 40%. ALL OPERABLE SASH SHALL HAVE ALUMINIUM SCREEDING.



- ABBREVIATIONS**
- HM - HOLLOW METAL
 - AL - ALUMINUM
 - SST - STAINLESS STEEL
 - STL - STEEL
 - WMF - WINDOW WALL FRAME
 - SC - SOLID CORE WOOD
 - HC - HOLLOW CORE WOOD
 - SCL - SOLID CORE WOOD (LEGACY)

DOOR IDENTIFICATION @ ALL MAIN ENTRY DOORS (CLASSROOMS INCLUDED)

QTY.	WIDTH	HEIGHT	TYPE	FINISH	GLASS TYPE	WINDOW TYPES
2	6'-0"	4'-0"	1	ANODIZED	1/32" MIN SOLAR GRAY 40%	SLIDER (XOX) FIXED DOUBLE HUNG SLIDER (XO)

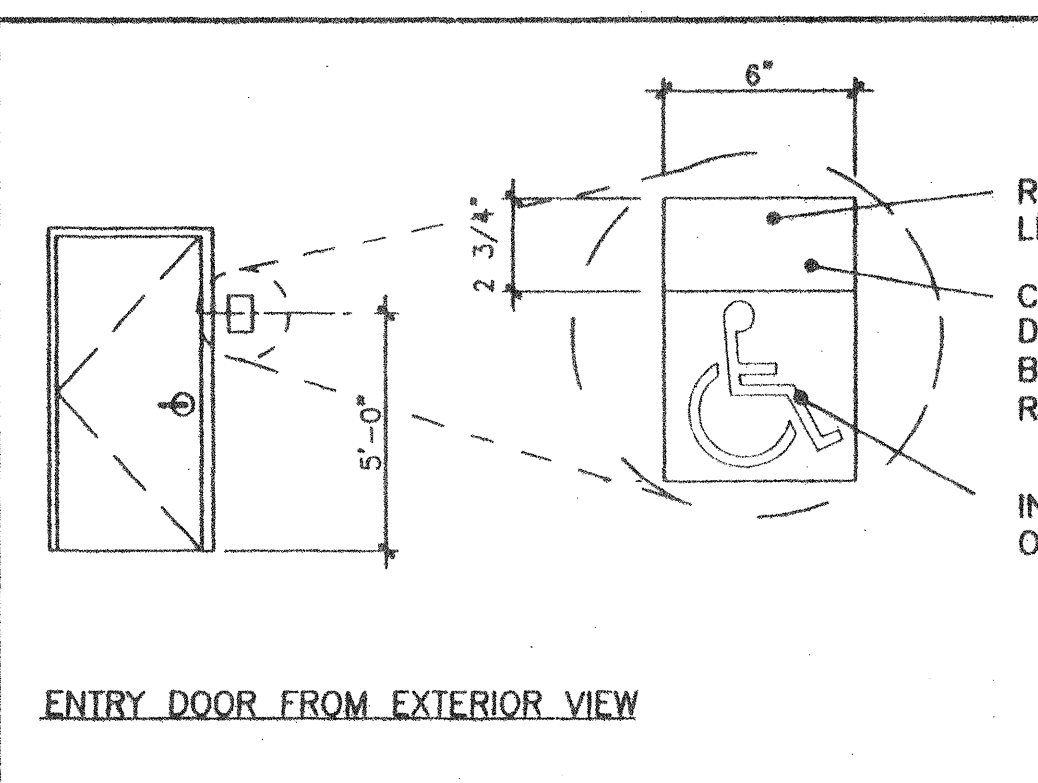
NOTE FOR ALL EXIT DOORS

ALL EXIT DOORS SHALL BE OPENABLE FROM THE INSIDE WITHOUT THE USE OF A KEY OR ANY SPECIAL KNOWLEDGE OR EFFORT

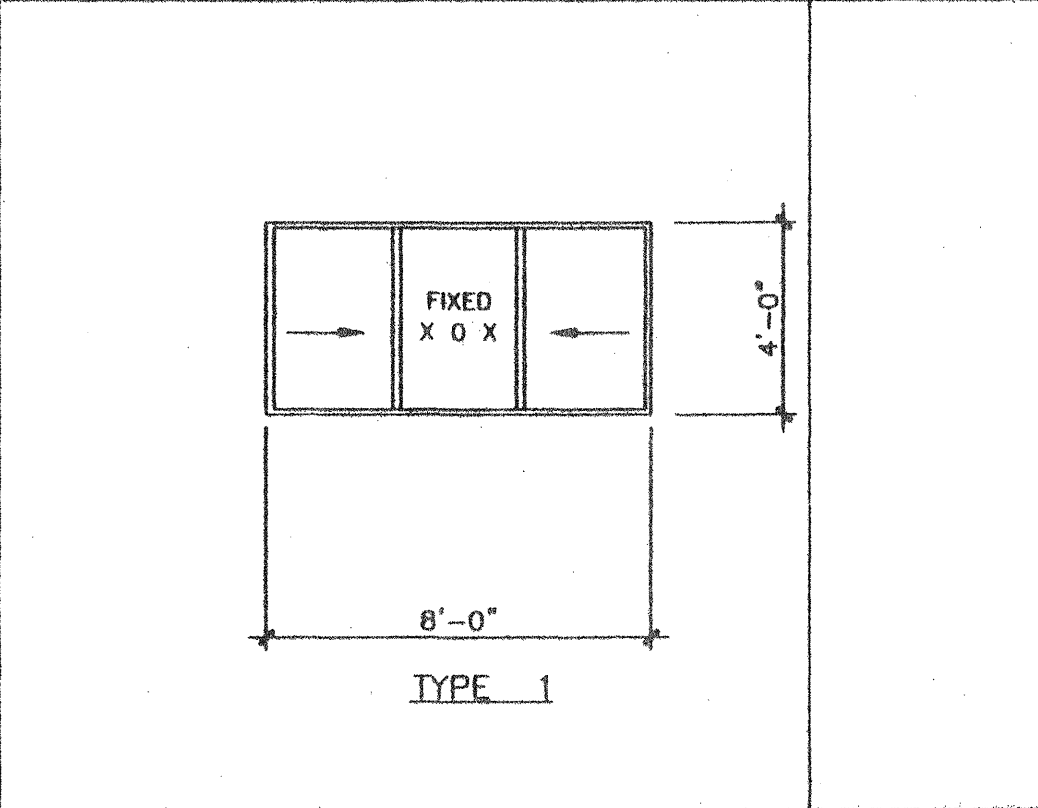
HARDWARE SCHEDULE

- HARDWARE SET #1**
- LOCKSET - SCHLAGE D70PD, RHODES LEVER, OR EQUAL
 - BUTTS - 1-1/2" PAIR HAGER 1279 BB 4-1/2 x 4-1/2 NRP 26D OR EQUAL
 - CLOSER - NORTON 1601 BFD / 900 BFD CAL ROYAL OR EQUAL
 - THRESHOLD - PEMCO 271A OR EQUAL
 - DOOR BOTTOM - PEMCO 216AV OR EQUAL
 - WEATHERSTRIP - PEMCO 299AV OR EQUAL
- HARDWARE SET #2 (INTERIOR PASSAGE)**
- LOCKSET - SCHLAGE D10S WITH RHODES LEVER, OR EQUAL
 - BUTTS - 1-1/2" PAIR HAGER 1279 4-1/2 x 4-1/2 OR EQUAL
- HARDWARE SET #3 (INTERIOR / OFFICE LOCKABLE)**
- LOCKSET - SCHLAGE D53PD, WITH RHODES LEVER OR EQUAL
 - BUTTS - 1-1/2" PAIR HAGER 1279 4-1/2 x 4-1/2 26D
- HARDWARE SET #4 (INTERIOR / DOUBLE CLASSROOM LOCKABLE)**
- LOCKSET - SCHLAGE D66PD, WITH RHODES LEVER OR EQUAL
 - BUTTS - 1-1/2" PAIR HAGER 1279 4-1/2 x 4-1/2 26D
- HARDWARE SET #5 (INTERIOR TOILET ROOM / PRIVACY)**
- LOCKSET - SCHLAGE D40S OR EQUAL
 - BUTTS - 1-1/2" PAIR HAGER 1279 4-1/2 x 4-1/2 26D
- HARDWARE SET #6 (INTERIOR STOREROOM)**
- LOCKSET - SCHLAGE D80PD WITH RHODES LEVER OR EQUAL
 - BUTTS - 1-1/2" PAIR HAGER 1279 4-1/2 x 4-1/2 26D
- HARDWARE SET #7 (PANIC)**
- LOCKSET - VON DUPRIN 09L PANIC HARDWARE OR EQUAL
 - BUTTS - 1-1/2" PAIR HAGER 1279 BB 4-1/2 x 4-1/2 NRP 26D OR EQUAL
 - CLOSER - NORTON 8501 BFD / 900 BFD CAL ROYAL OR EQUAL
 - THRESHOLD - PEMCO 271A OR EQUAL
 - DOOR BOTTOM - PEMCO 216AV OR EQUAL
 - WEATHERSTRIP - PEMCO 299AV OR EQUAL
- HARDWARE SET #8 (FIRE DOOR)**
- LOCKSET - SCHLAGE D80PD, RHODES LEVER, OR EQUAL
 - BUTTS - 1-1/2" PAIR HAGER 1279 BB 4-1/2 x 4-1/2 NRP 26D OR EQUAL
 - CLOSER - NORTON 1601 BFD / 900 BFD CAL ROYAL OR EQUAL
 - THRESHOLD - PEMCO 271A OR EQUAL
 - DOOR BOTTOM - PEMCO 216AV OR EQUAL
 - WEATHERSTRIP - PEMCO 299AV OR EQUAL

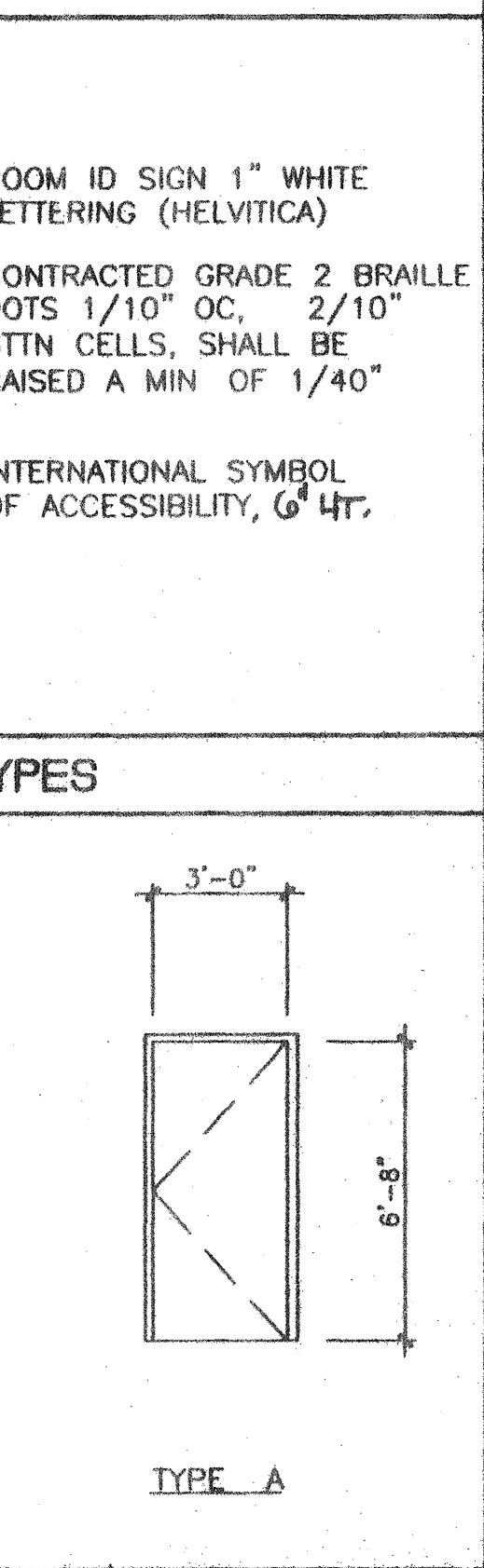
ACCESSIBILITY SIGNAGE (BY DISTRICT)



WINDOW TYPES



ACCESSIBILITY SIGNAGE (AS REQUIRED - BY MODTECH)



NOTE:

ATTACH SIGNS USING THREE (3) WOODSCREWS, COUNTERSINK AND ADHESIVE SIGN SHALL BE CENTERED ON DOOR AND MOUNTED 60" ABOVE FLOOR. ATTACHMENT OF SIGN SHALL BE FULLY CONCEALED AND TAMPER RESISTANT

RADIUS CORNERS

- CLEAR ACRYLIC PLASTIC
- OPAQUE WHITE ACRYLIC PLASTIC BACK
- PAINT BACKGROUND OF INTERIOR FACE OF CLEAR PLASTIC

TOILET SIGNAGE

SYMBOLS SHALL BE CONTRASTING IN COLOR FROM THE DOOR

- 1/4" THICK, 12" DIAMETER CIRCLE FOR BOTH WOMEN/UNISEX
- 1/4" THICK, 12" SIDES EQUILATERAL TRIANGLE FOR MEN

ARCHITECT

Seal of the State Architect, Office of Regulation Services, State of California.

ELECTRICAL

STRUCTURAL

MECHANICAL

FIRE MARSHAL

ACCESS COMPLIANCE

STRUCTURAL SAFETY

PC 275

MODTECH INC.

FINISH SCHEDULE

3278

4012-094

DATE 9/1/99

A5.0

AGENCY TRACKING NO. 63321-201

FILE NO. 15-6

IDENTIFICATION STAMP

DIV. OF THE STATE ARCHITECT

OFFICE OF REGULATION SERVICES

03-117283

AC: [Signature]

DATE: SEP 10 2018