

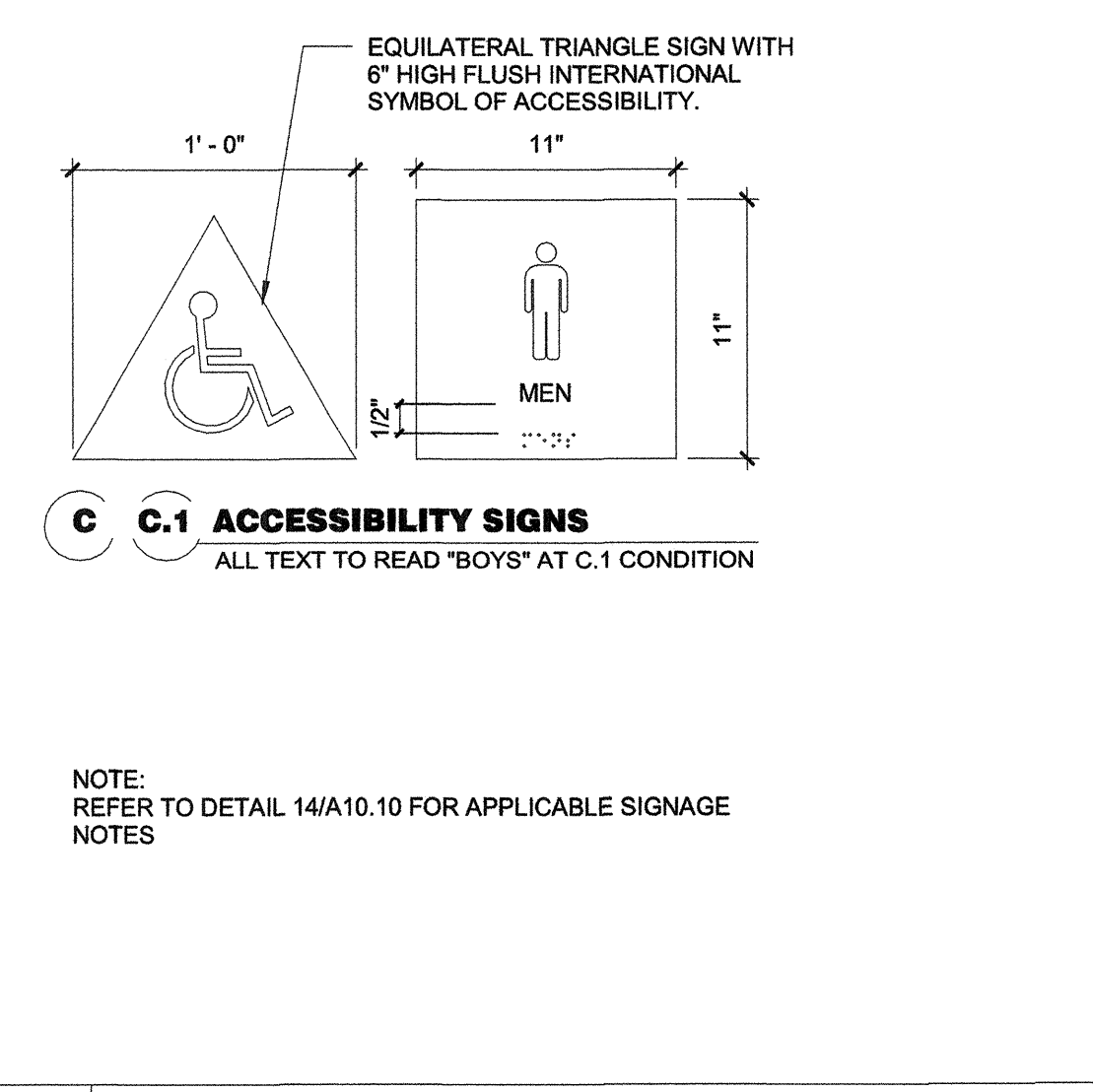
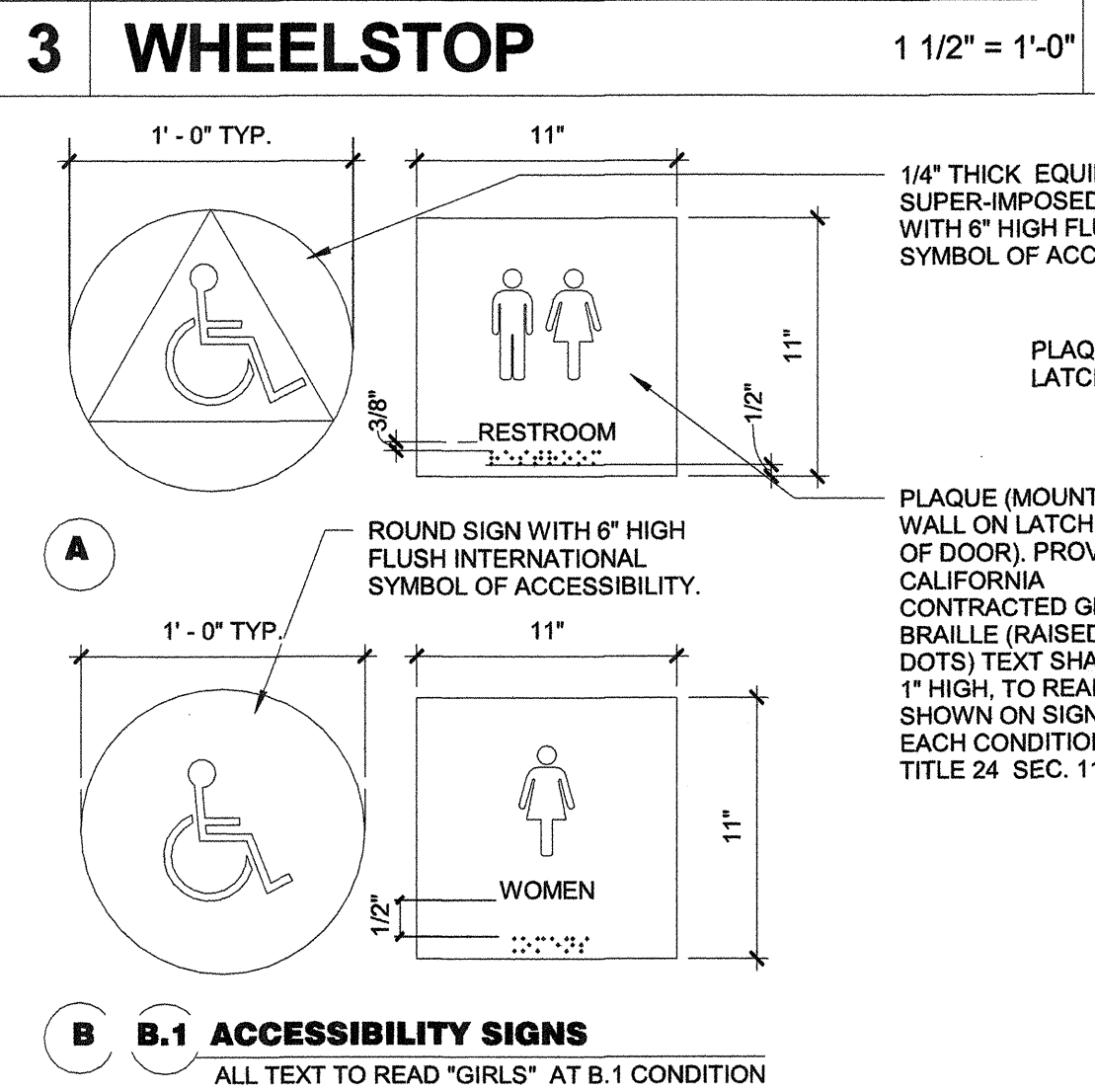
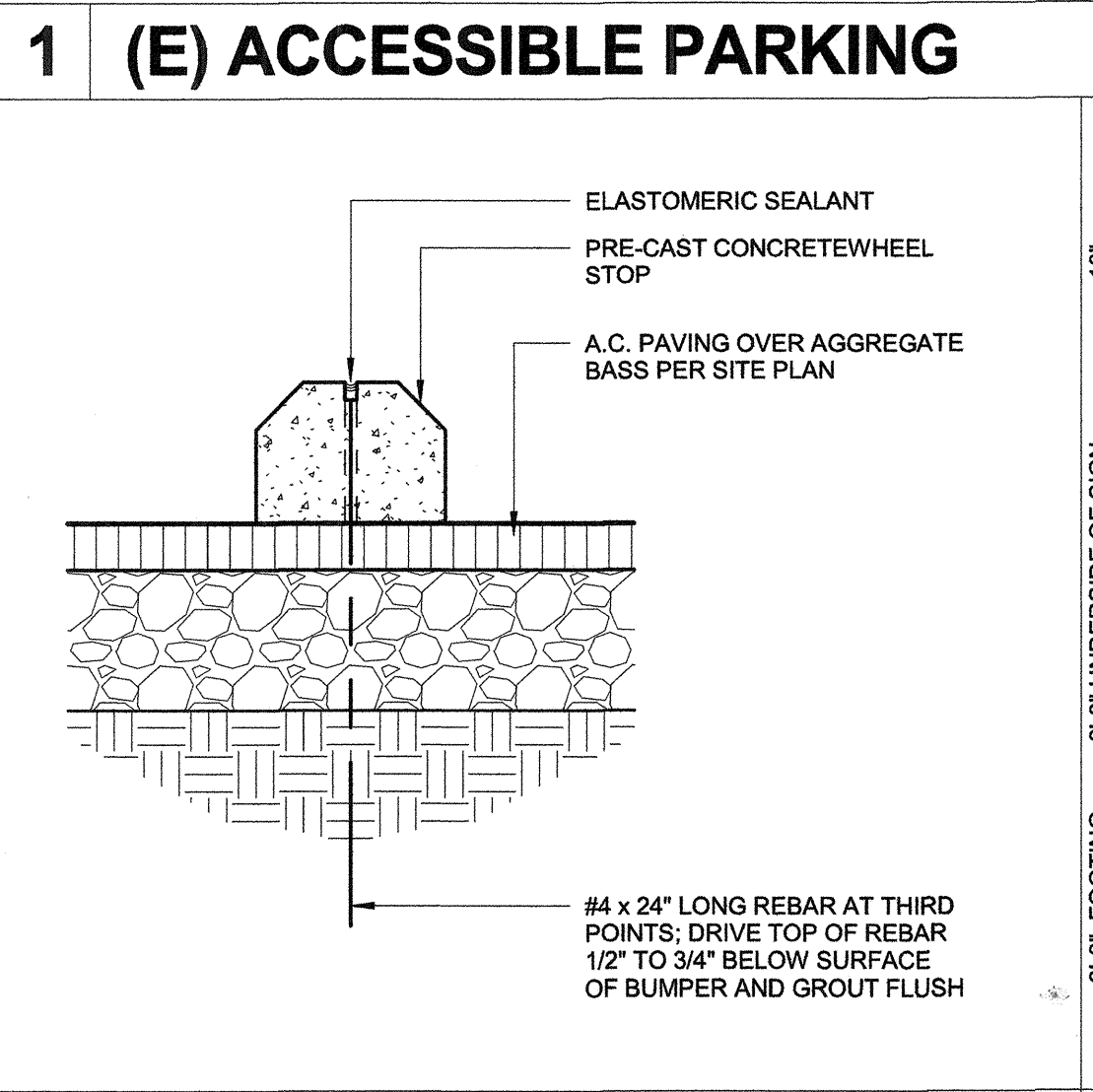
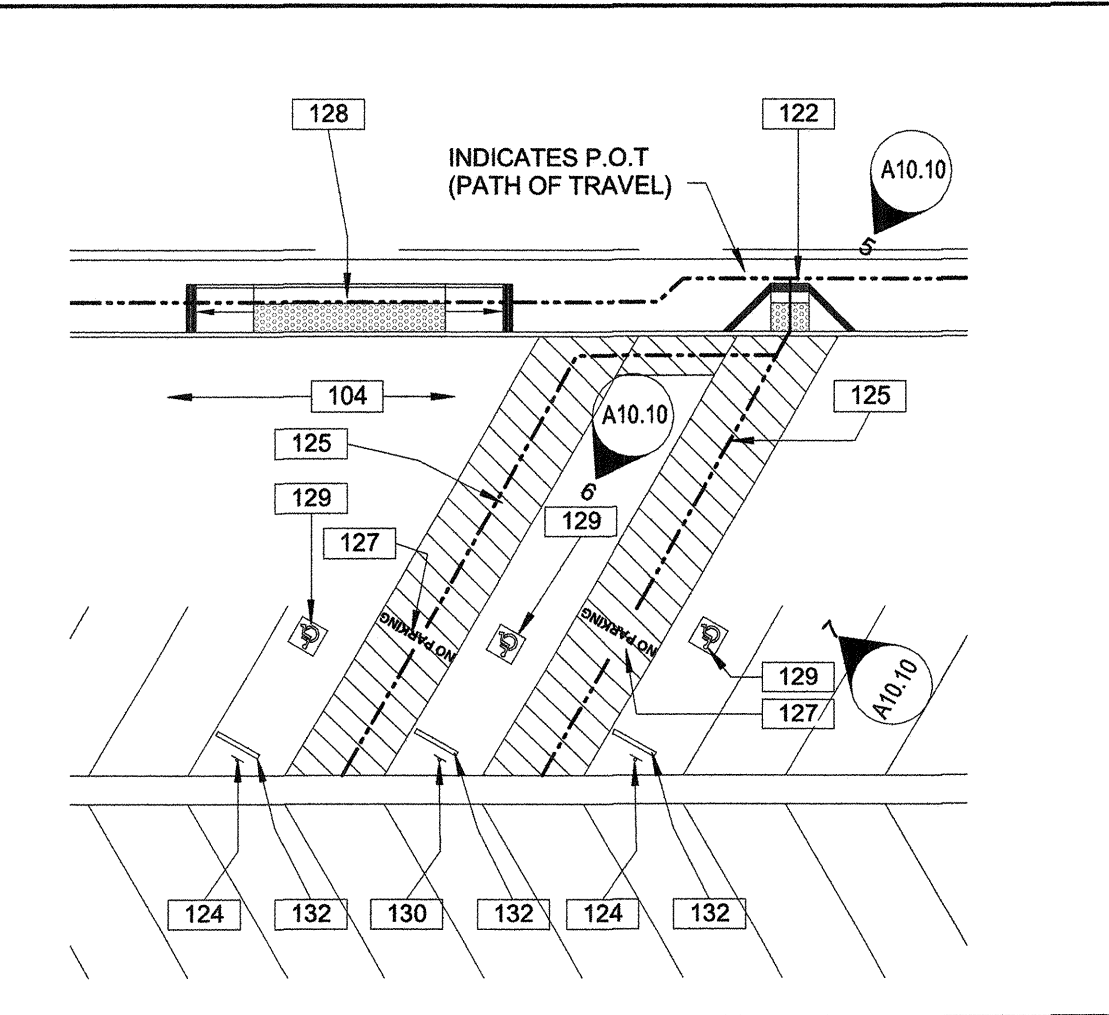
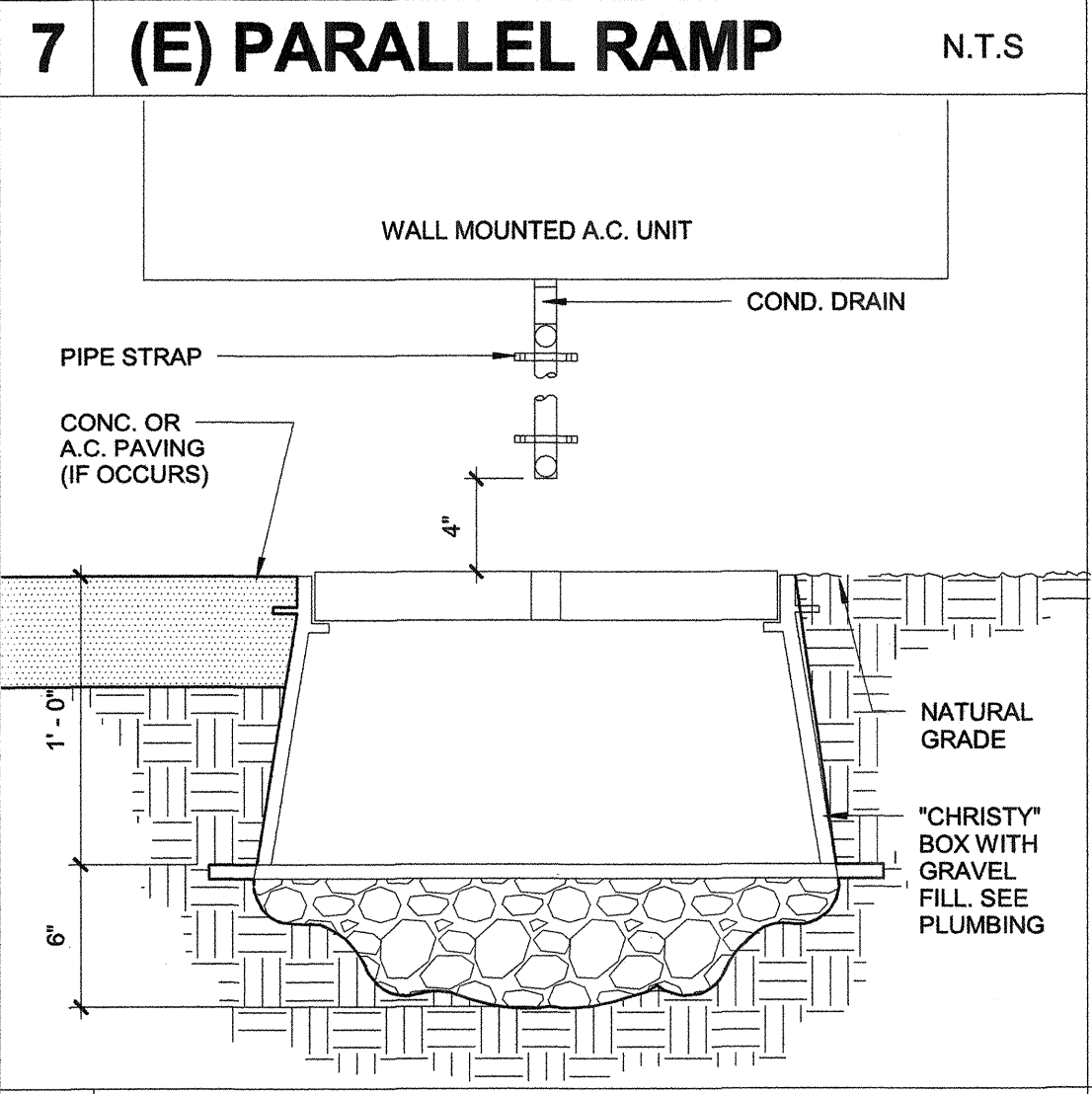
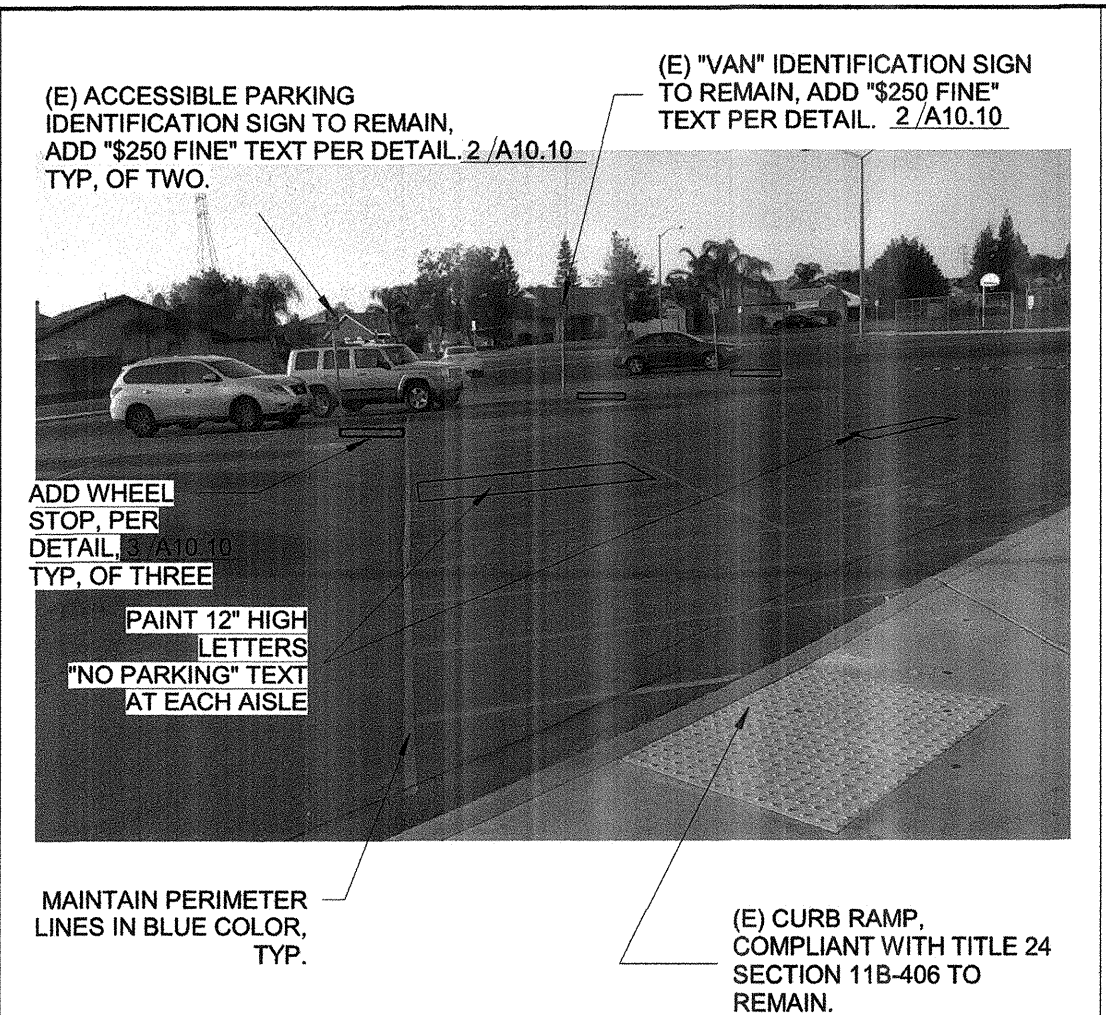
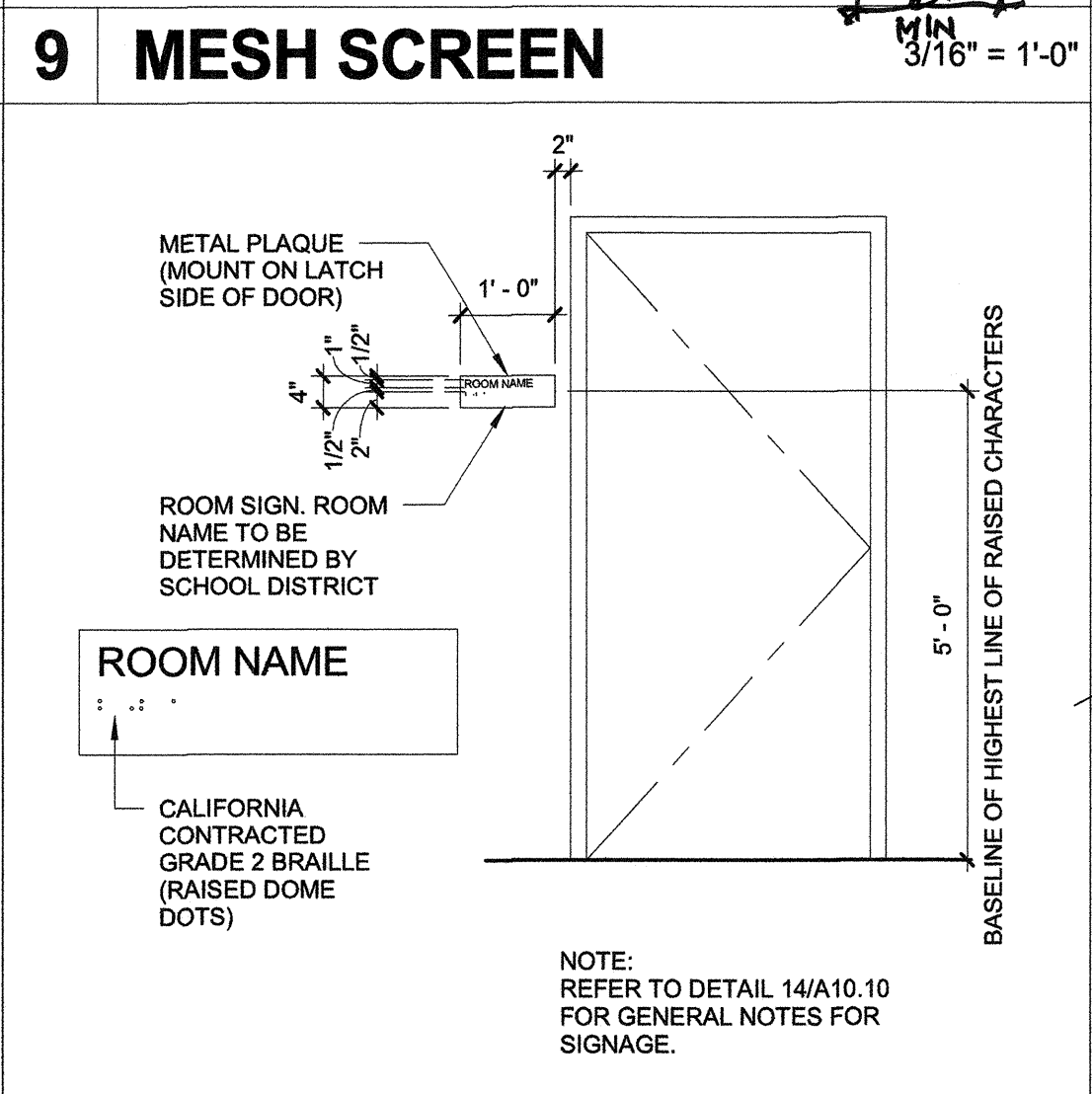
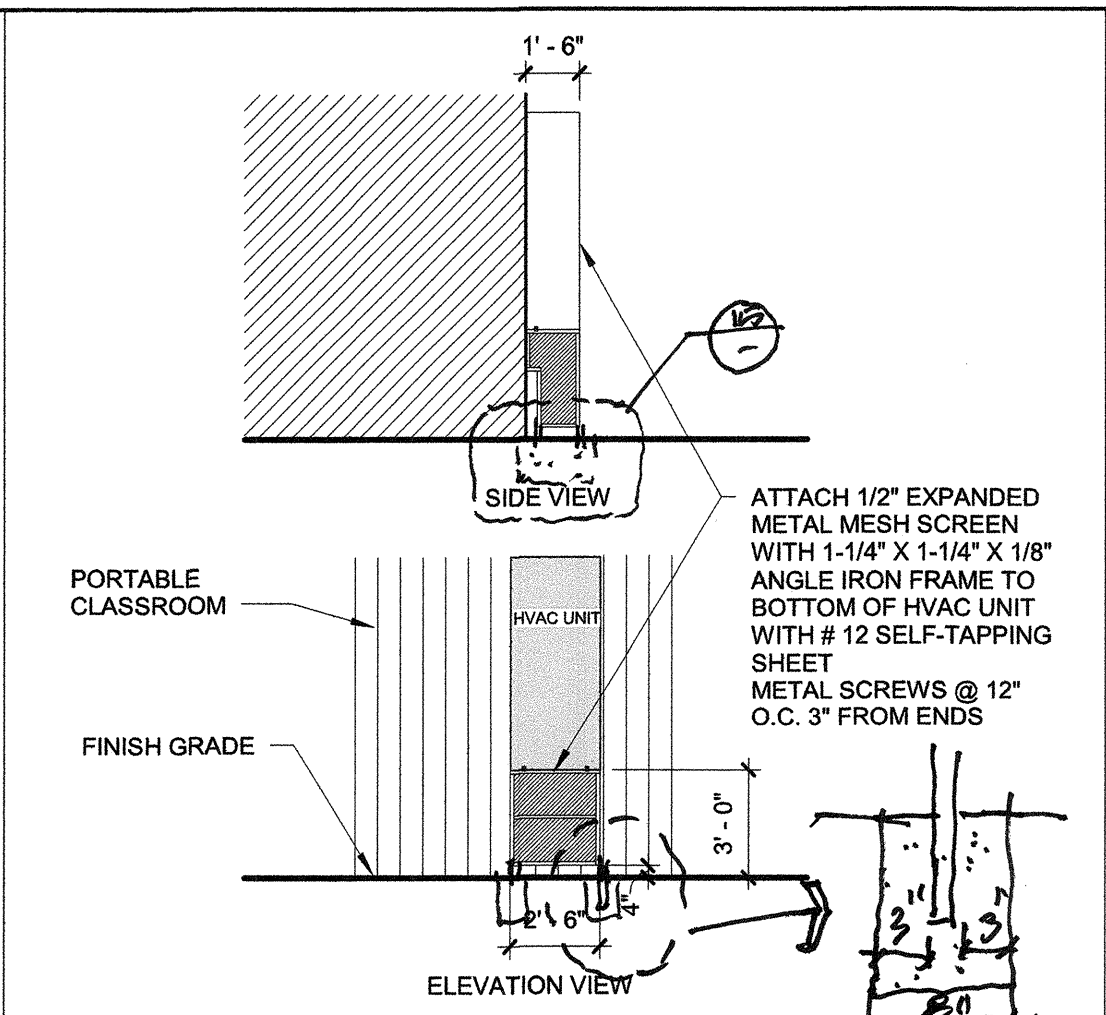
13 PARKING ENTRY SIGN 3/4" = 1'-0"

NOTES APPLICABLE TO SIGNAGE DETAILS 2 & 13/A10.10

- ALL SIGN SUBSTRATES SHALL BE 1/8" THICK REFLECTORIZED ALUMINUM.
- LETTERS AND GRAPHICS SHALL BE SILK SCREENED REFLECTORIZED ALUMINUM.
- ALL SIGNS SHALL BE MOUNTED WITH TAMPER PROOF SCREWS TO GALVANIZED 2" DIAMETER STANDARD STEEL PIPE. PIPE SHALL BE SHOP PRIMED AND PAINTED WITH TWO (2) COATS OF EXTERIOR ENAMEL.
- IN LIEU OF TAMPER PROOF SCREWS, SPOT WELDING END OF BOLT AFTER NUT INSTALLATION IS ACCEPTABLE.
- PROVIDE 3/4" RADIUS AT ALL SIGN CORNERS.
- SIGNS SHALL BE MOUNTED IN A CONSPICUOUS LOCATION.

NOTES APPLICABLE TO BLDG SIGNAGE DETAILS 4 & 10/A10.10

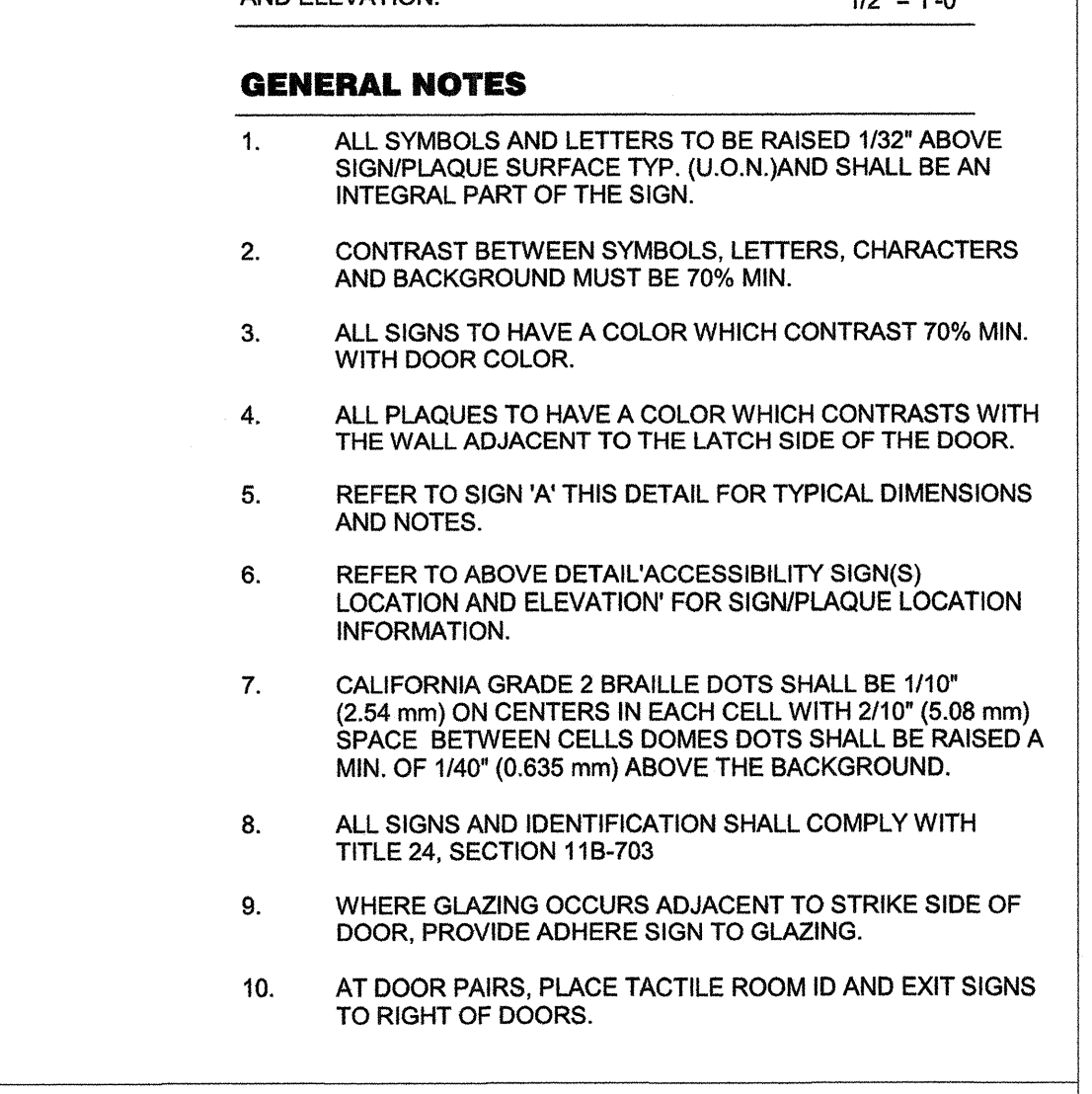
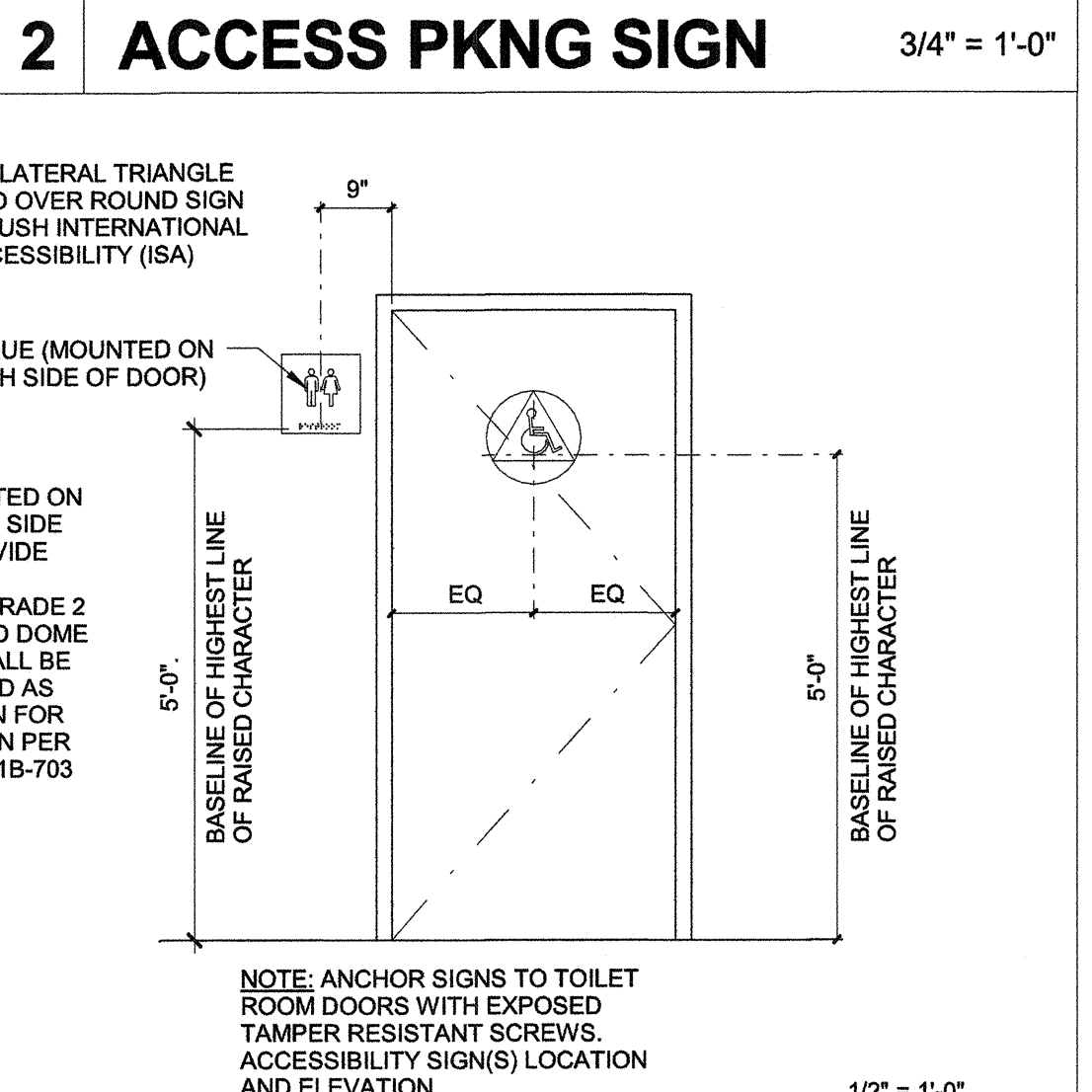
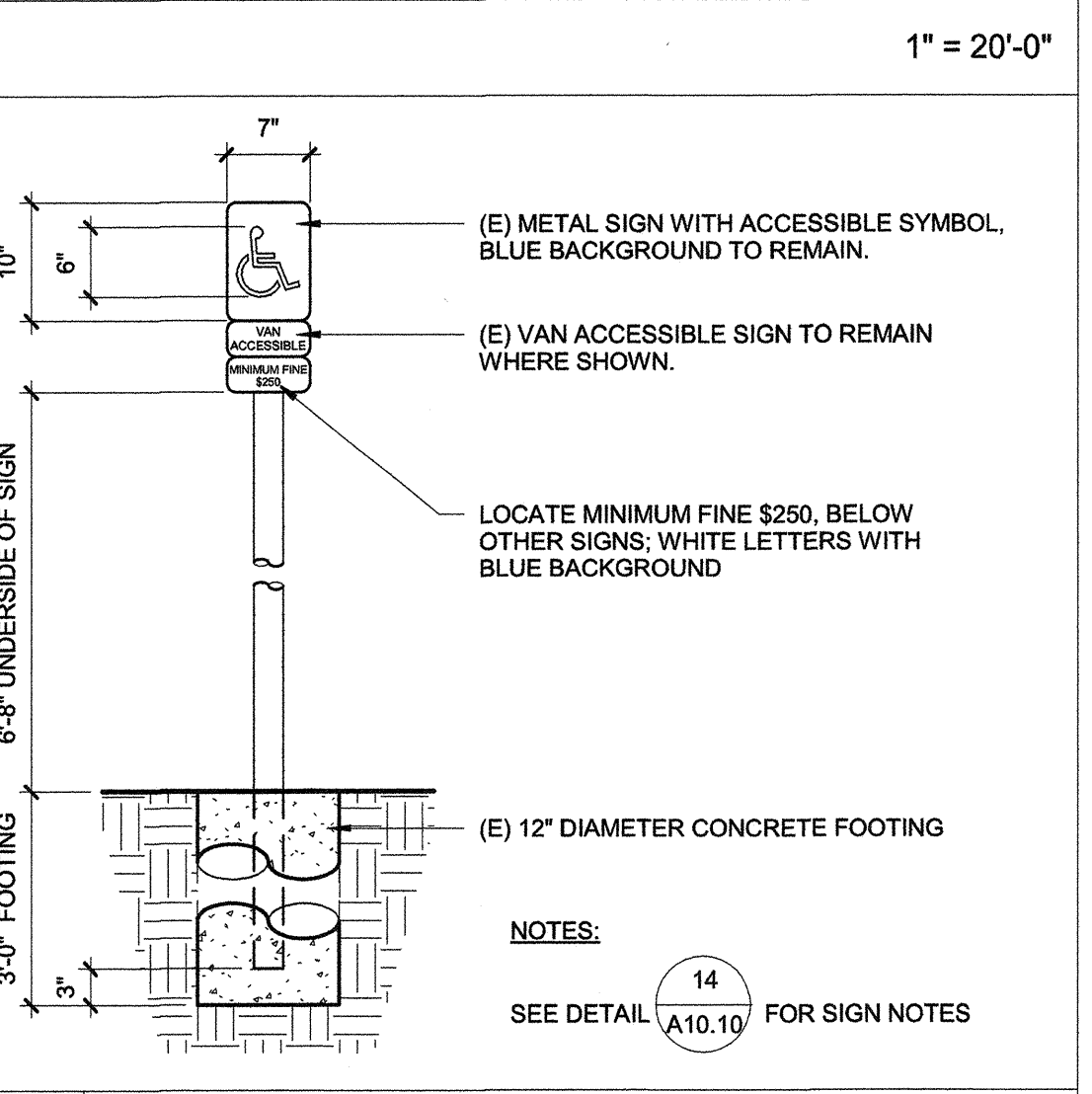
- ALL SYMBOLS AND LETTERS TO BE RAISED 1/32" ABOVE SIGN/PLAQUE SURFACE TYP. (U.O.N.) AND SHALL BE AN INTEGRAL PART OF THE SIGN. CONTRAST BETWEEN SYMBOLS, LETTERS, CHARACTERS AND BACKGROUND MUST BE 70% MIN.
- ALL SIGNS TO HAVE A COLOR WHICH CONTRASTS 70% MIN. WITH DOOR COLOR.
- ALL PLAQUES TO HAVE A COLOR WHICH CONTRASTS WITH THE WALL ADJACENT TO THE LATCH SIDE OF THE DOOR.
- REFER TO ABOVE DETAIL ACCESSIBILITY SIGN(S) LOCATION AND ELEVATION FOR SIGN/PLAQUE LOCATION INFORMATION.
- CALIFORNIA GRADE 2 BRAILLE DOTS SHALL BE 1/10" (2.54mm) ON CENTERS IN EACH CELL WITH 2/10" (5.08 mm) SPACE BETWEEN CELLS. DOMES DOTS SHALL BE RAISED A MIN. OF 1/40" (0.635 mm) ABOVE THE BACKGROUND.
- ALL SIGNS AND IDENTIFICATION SHALL COMPLY WITH TITLE 24, SECTION 1117B.5 THRU 1117B.5.10.



100 - KEYNOTES

104 (E) ASPHALT PAVING TO REMAIN.
 122 (E) CURB RAMP, COMPLIANT WITH TITLE 24 SECTION 11B-406 TO REMAIN.
 124 (E) ACCESSIBLE PARKING SIGNS, TO REMAIN. PROVIDE "MIN. FINE \$250" SIGNS PER DETAIL 2/A10.10.
 125 (E) 4" WIDE BLUE COLOR HATCH AND PERIMETER LINES AS SHOWN, TO REMAIN.
 127 PAINT 12" HIGH "NO PARKING" TEXT AT AISLE AS SHOWN.
 128 (E) PARALLEL CURB RAMP COMPLYING WITH TITLE 24 SECTION 11B-406 TO REMAIN.
 129 (E) 36"X36" INTERNATIONAL SYMBOL OF ACCESSIBILITY TO REMAIN.
 130 (E) "VAN" IDENTIFICATION SIGN TO REMAIN. ADD "\$250 FINE" TEXT PER DETAIL 2/A10.10.
 132 ADD WHEEL STOP, PER DETAIL 3/A10.10.

NOTES:
 1. REFER TO DETAILS 5.6 & 7 THIS SHEET, FOR PARKING SPACES RELATED VIEWS.
 2. EXISTING ACCESSIBLE PARKING APPROVED UNDER DSA AF# 03-108679



PRIME CONSULTANT

IBI ARCHITECTURE PLANNING

San Luis Obispo
 4119 Broad Street, Suite 210
 San Luis Obispo, CA 93401
 805.546.0433 fax: 805.546.0504

SEAL

IBI REGISTERED ARCHITECT
 No. C18079
 REN. 10/17
 STATE OF CALIFORNIA

COPYRIGHT:
 Any reproduction or distribution for any purpose other than authorized by IBI Group is forbidden.

COPYRIGHT 2016 IBI GROUP

REVISIONS

NO.	DATE	APPRD.	DESCRIPTION

CONSULTANT

AGENCY INFORMATION:

AGENCY TRACKING NO. 63321-212
 FILE NO. 15-6

IDENTIFICATION STAMP
 DIV. OF THE STATE ARCHITECT
 OFFICE OF REGULATION SERVICES
 03/17/2016
 NCA/FLS
 DATE SEP 13 2016

BAKERSFIELD CITY SCHOOL DISTRICT

CHIPMAN JR. HIGH
 RELOCATABLES R-6 & R-7

2905 ESSLER ST
 BAKERSFIELD, CA 93306

OPSC or OSHPD PROJ. NO.: 16132.000

PROJECT NO.: 16132.000

DRAWN BY: C.C.

CHK'D BY: RM

ISSUE DATE: 6/22/2016

SHEET TITLE

PARKING & ACCESS DETAILS

SHEET NUMBER

A10.10

CONSTRUCTION DOCUMENTS

PLOT DATE: 6/17/2016 1:49:26 PM J:\16132_BC_ChipRReloc2\5.9 Drawings\63arch\document\ATV-16132-she_Chipman 2.rvt