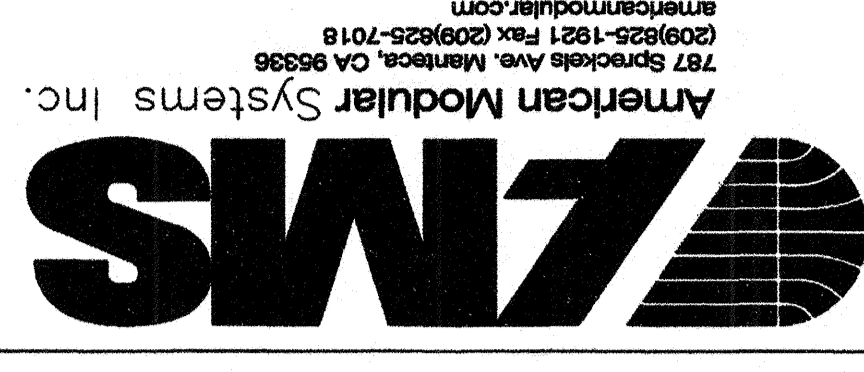


24'x40' TO 120'x40'  
2:12 PITCH ROOF  
EXPOSED STEEL  
RELOCATABLE CLASSROOM



American Modular Systems Inc.  
787 Brockton Ave., Merrimack, CA 98396  
(209)225-1921 Fax: (209)225-7018  
americanmodular.com

CUSTOMER: \_\_\_\_\_

CONCRETE FOUNDATION PLAN & NOTES  
50 PSF FLOOR LIVE LOAD - PLYWOOD FLOOR

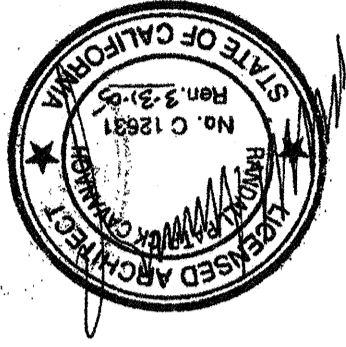
DATE: 5/30/03  
SCALE: \_\_\_\_\_  
DRAWN BY: REM  
DESIGNED BY: RJG  
CHECKED BY: KAL  
SERIAL NO. \_\_\_\_\_

NO. DATE DESCRIPTION NO. DATE DESCRIPTION

REVISIONS

PROJECT NO. 02156-13  
SHEET NO. S1C

IDENTIFICATION STAMP  
DIV. OF THE STATE ARCHITECT  
APPR 111734  
DATE APR 29 2008  
AC FLS  
2001 CBC  
FILE NO. PC  
IDENTIFICATION STAMP  
DIV. OF THE STATE ARCHITECT  
OFFICE OF REGULATION SERVICES  
APPLICATION NO. DA-1040271  
DATE OCT 15 2003  
AC FLS

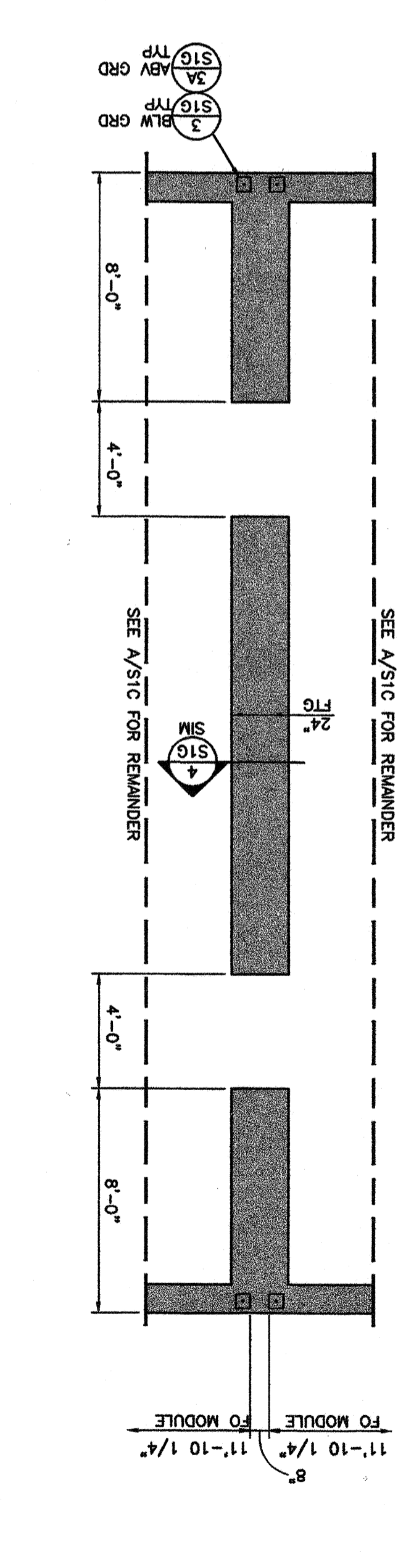


- NOTES:
- DO NOT INSTALL BUILDING IN AREAS OF WATER FLOW LINES.
  - IF CONCRETE WITH A COMPRESSIVE STRENGTH OF 2500 PSI IS SPECIFIED THEN TESTS OF THE CEMENT AND REINFORCING BARS MUST BE PERFORMED PER 2001 CBC. IF CONCRETE WITH A COMPRESSIVE STRENGTH OF 3500 PSI IS SPECIFIED THEN TESTING OF THE CEMENT AND REINFORCING BARS MAY BE WAIVED PER 1929A.6 AS THE CONCRETE WAS DESIGNED WITH A COMPRESSIVE STRENGTH OF 2500 PSI.
  - REINFORCING STEEL 40,000 PSI MINIMUM, PER ASTM A615.
  - MINIMUM SOIL BEARING CAPACITY 1000 PSF.
  - DESIGN SOIL BEARING CAPACITY 1000 PSF.
  - ALTERNATE SIDE PLATES MUST COMPLETELY REPLACE TYPICAL SHEAR R<sub>s</sub> ALONG ANY ONE MODULE LINE (4 ALTERNATE SHEAR R<sub>s</sub> @ INTERIOR MODULE LINE AND 2 ALTERNATE SHEAR R<sub>s</sub> @ EXTERIOR MODULE LINE). COMBINATION OF TYPICAL AND ALTERNATE SHEAR R<sub>s</sub> ALONG ANY ONE MODULE LINE IS NOT PERMITTED.

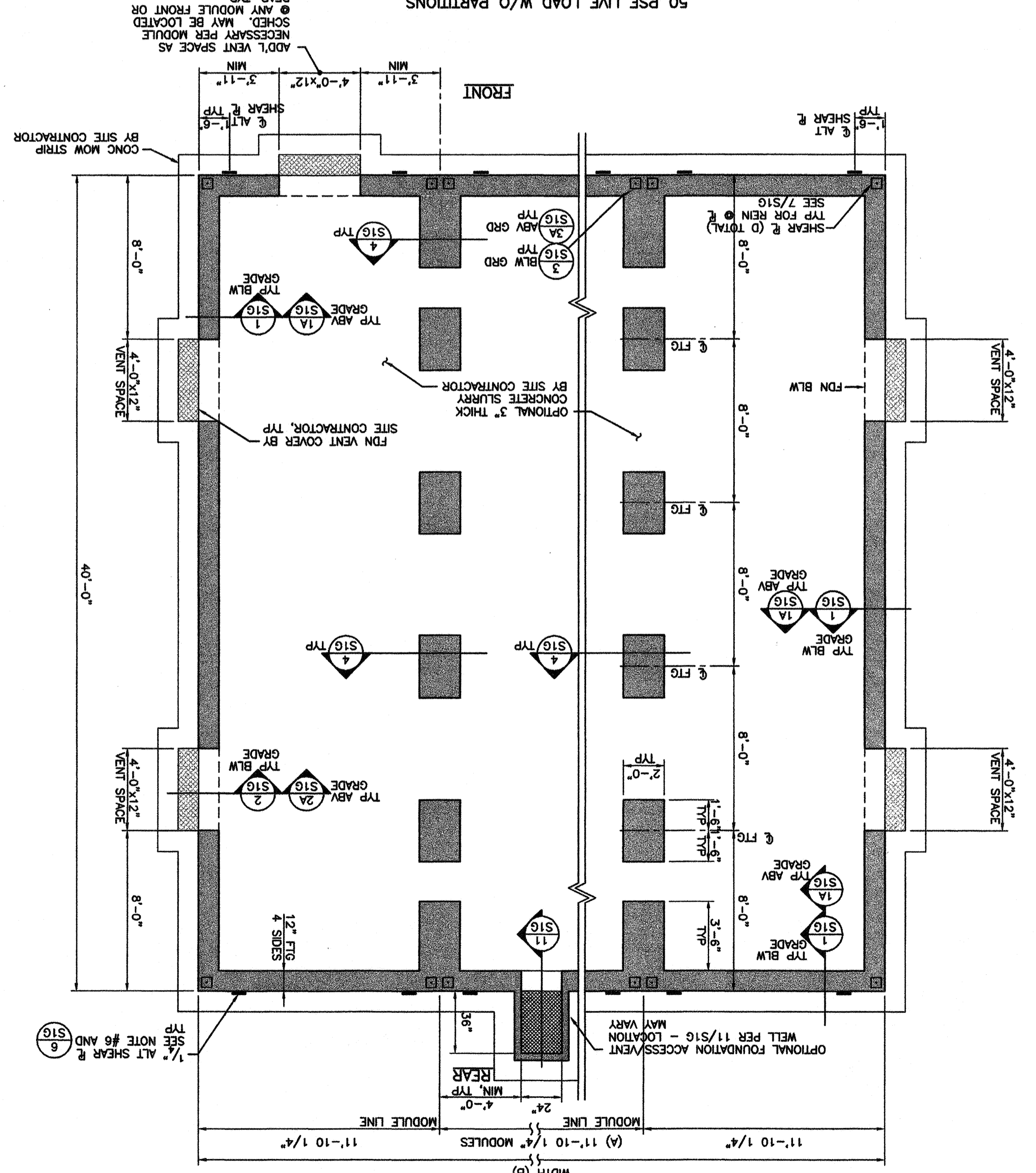
CONCRETE PROPORTIONS ARE PER METHOD A OF TITLE 24, PART 2, SECTION 1905A.2.3 AND TABLE 19A-A-8

MAXIMUM SIZE	MINIMUM SACKS OF CEMENT PER YARD OF CONCRETE	GALLONS PER 94 LBS CEMENT RATIO IN MINIMUM ULTIMATE 28 DAY COMPRESSIVE STRENGTH IN LBS PER SQUARE INCH
1 1/2 INCHES	5.8	6.75
1 1/2 INCHES	6.0	3500 - SEE NOTE #2

FOUNDATION PLAN  
COMBINED  
1/4" = 1'-0"



FOUNDATION PLAN  
PLYWOOD FLOOR SYSTEM  
50 PSF LIVE LOAD W/O PARTITIONS  
1/4" = 1'-0"



REFER TO SITE PLAN A1.04 FOR VENT LOCATION

MODULE SCHEDULE

BLDG SIZE (FT)	TOTAL # OF 12' WIDE MODULES	A. TOTAL # OF CENTER MODULES	B. TOTAL FOUNDATION WIDTH	TOTAL FLOOR AREA (FT <sup>2</sup> )	C. TOTAL # VENTS READ	AREA READ (FT <sup>2</sup> )	AREA READ (FT <sup>2</sup> )	D. TOTAL # SHEAR R <sub>s</sub>
24x40	2	0	23'-8 1/2"	960	35	67 1/2	1740	16
36x40	3	1	35'-6 3/4"	1440	47	87	1920	12
48x40	4	2	47'-3"	1920	59	117 1/2	2400	10
60x40	5	3	58'-3 3/4"	2400	71	147 1/2	2880	8
72x40	6	4	69'-3 3/4"	2880	82	177 1/2	3360	6
84x40	7	5	80'-3 3/4"	3360	94	207 1/2	3840	4
96x40	8	6	91'-3 3/4"	3840	105	237 1/2	4320	2
108x40	9	7	102'-3 3/4"	4320	117	267 1/2	4800	0
120x40	10	8	113'-3 3/4"	4800	128	297 1/2	5280	0