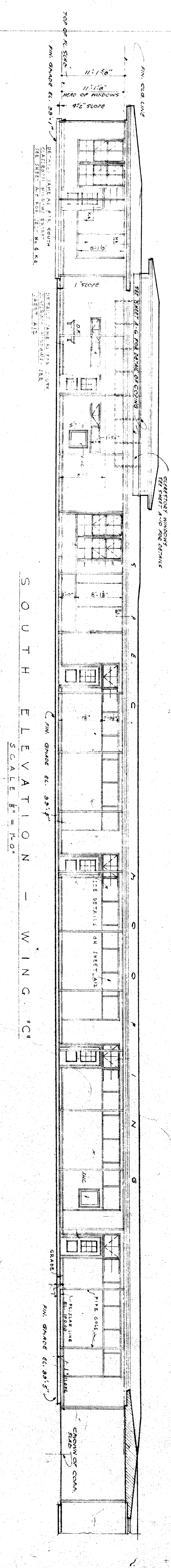
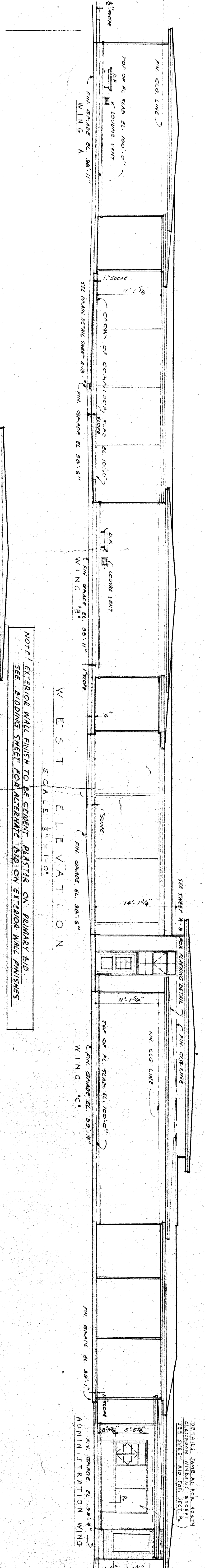


NORTH ELEVATION - WING C  
SCALE 3/8" = 1'-0"

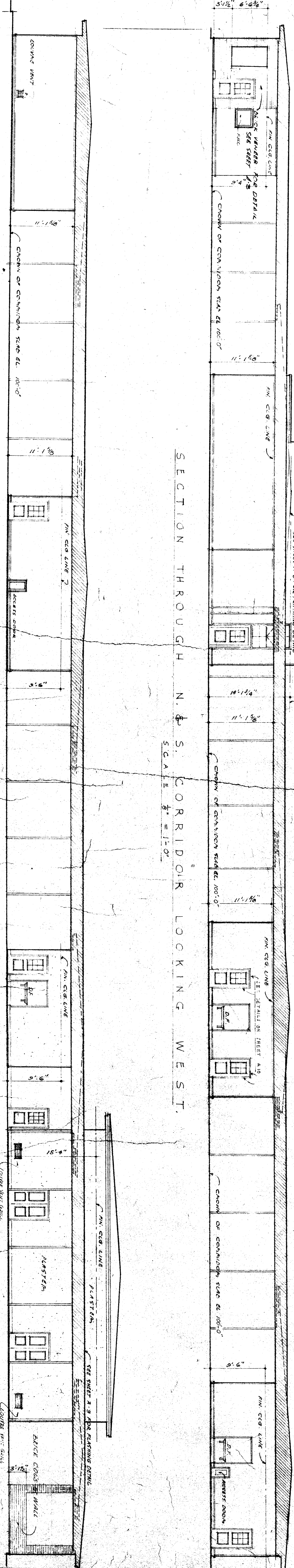


SOUTH ELEVATION - WING C  
SCALE 3/8" = 1'-0"

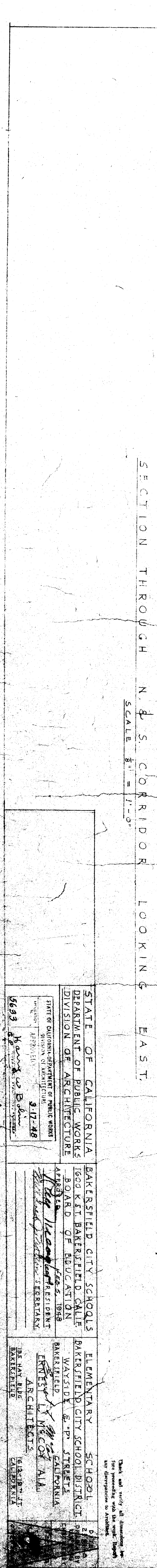


WEST ELEVATION  
SCALE 3/8" = 1'-0"

NOTE: EXTERIOR WALL FINISH TO BE GENEPT PLASTER ON PRIMARY BID.  
SEE RIDDING SHEET FOR ALTERNATE BID ON EXTERIOR WALL FINISHES.



SECTION THROUGH N & S CORRIDOR LOOKING WEST  
SCALE 3/8" = 1'-0"



SECTION THROUGH N & S CORRIDOR LOOKING EAST  
SCALE 3/8" = 1'-0"

STATE OF CALIFORNIA  
DEPARTMENT OF PUBLIC WORKS  
DIVISION OF ARCHITECTURE  
STATE OF CALIFORNIA  
DEPARTMENT OF PUBLIC WORKS  
DIVISION OF ARCHITECTURE  
3-17-48  
56931  
Bakerfield City Schools  
Bakerfield City School District  
Wayside School  
Architects  
Bakerfield City Schools  
Bakerfield City School District  
Wayside School  
Architects

Check and verify all dimensions and  
for compliance with the right. Design  
and construction to be shown.