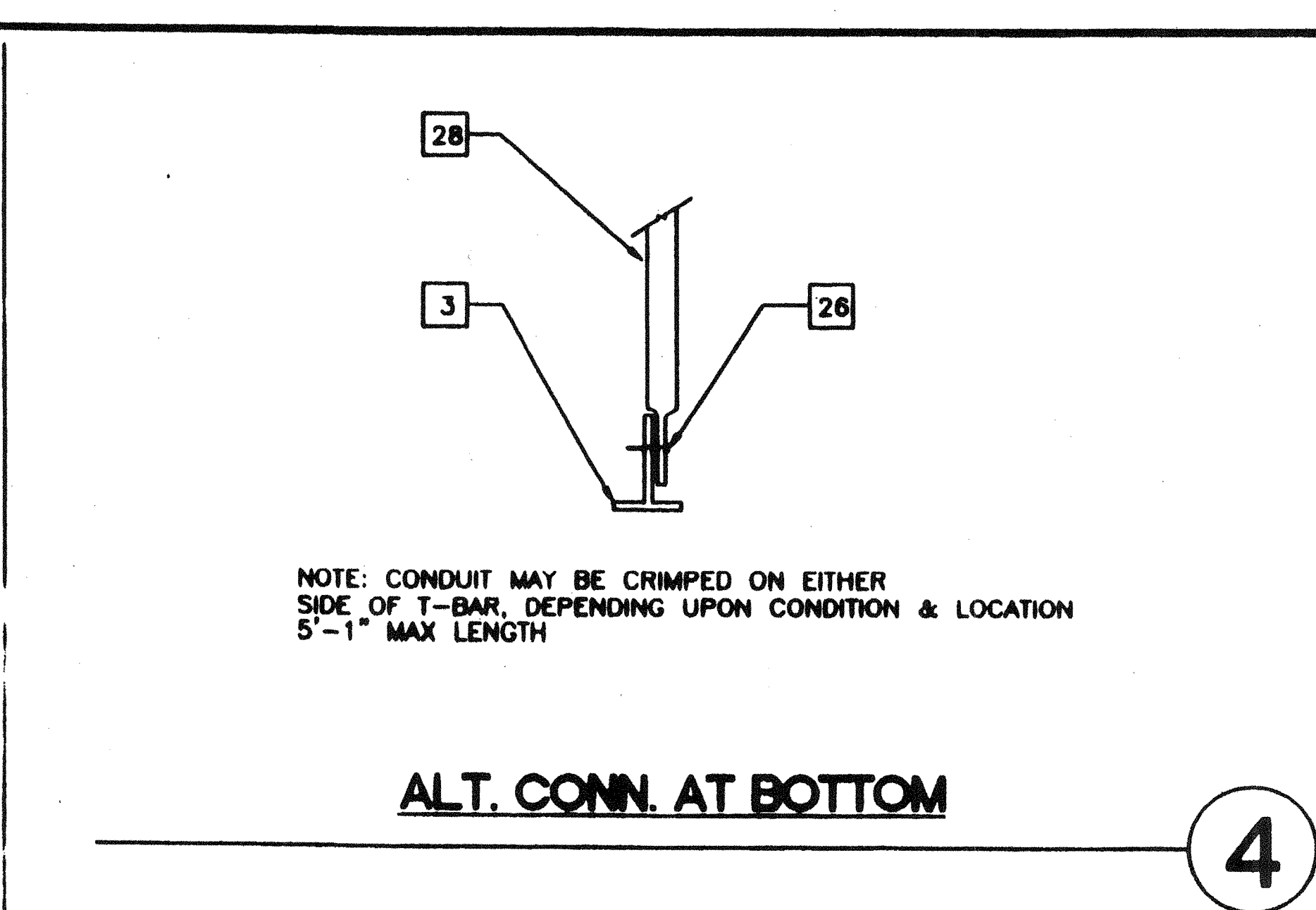


ALTERNATE

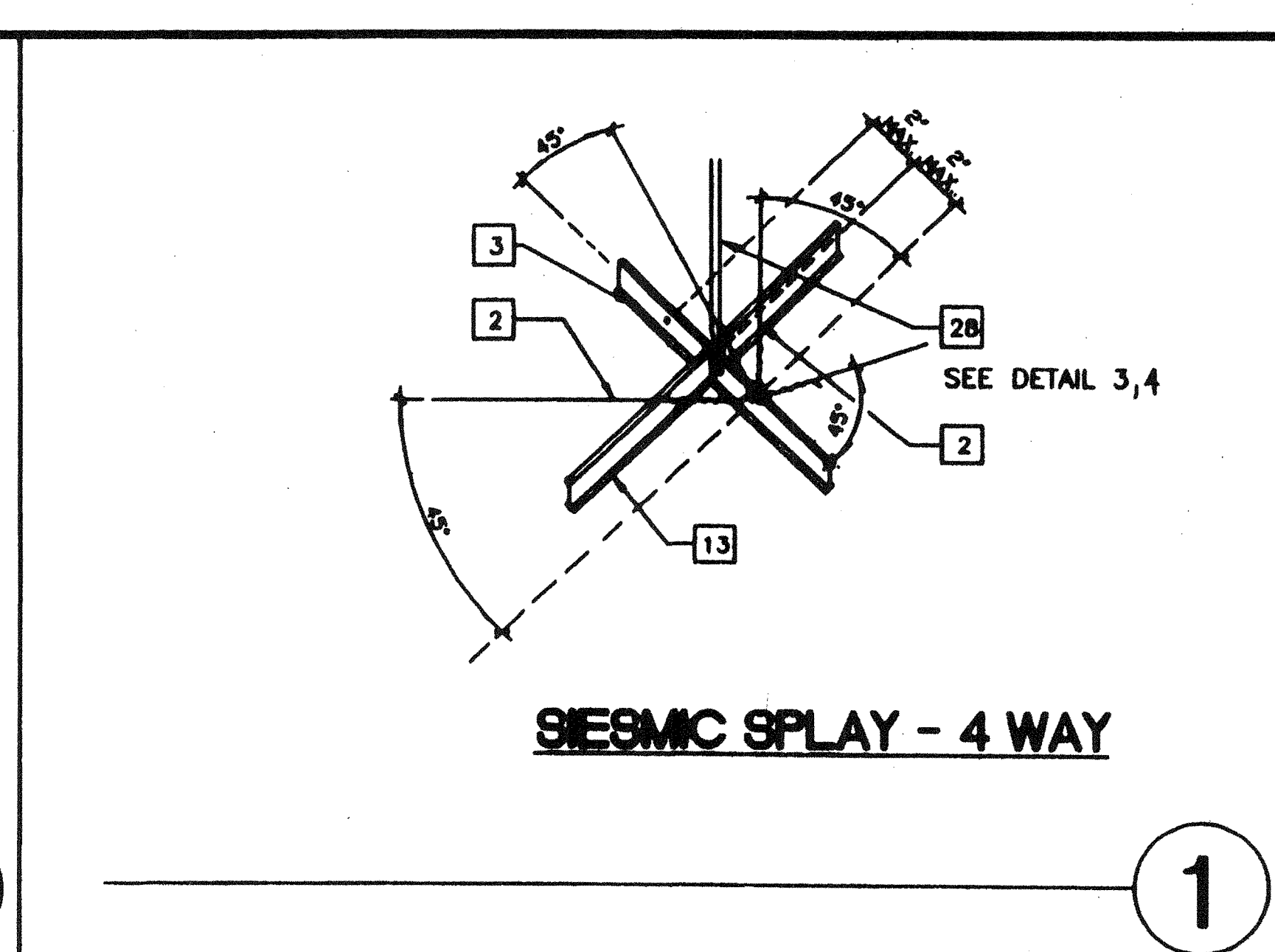
TYPICAL FIXED SIDE

7



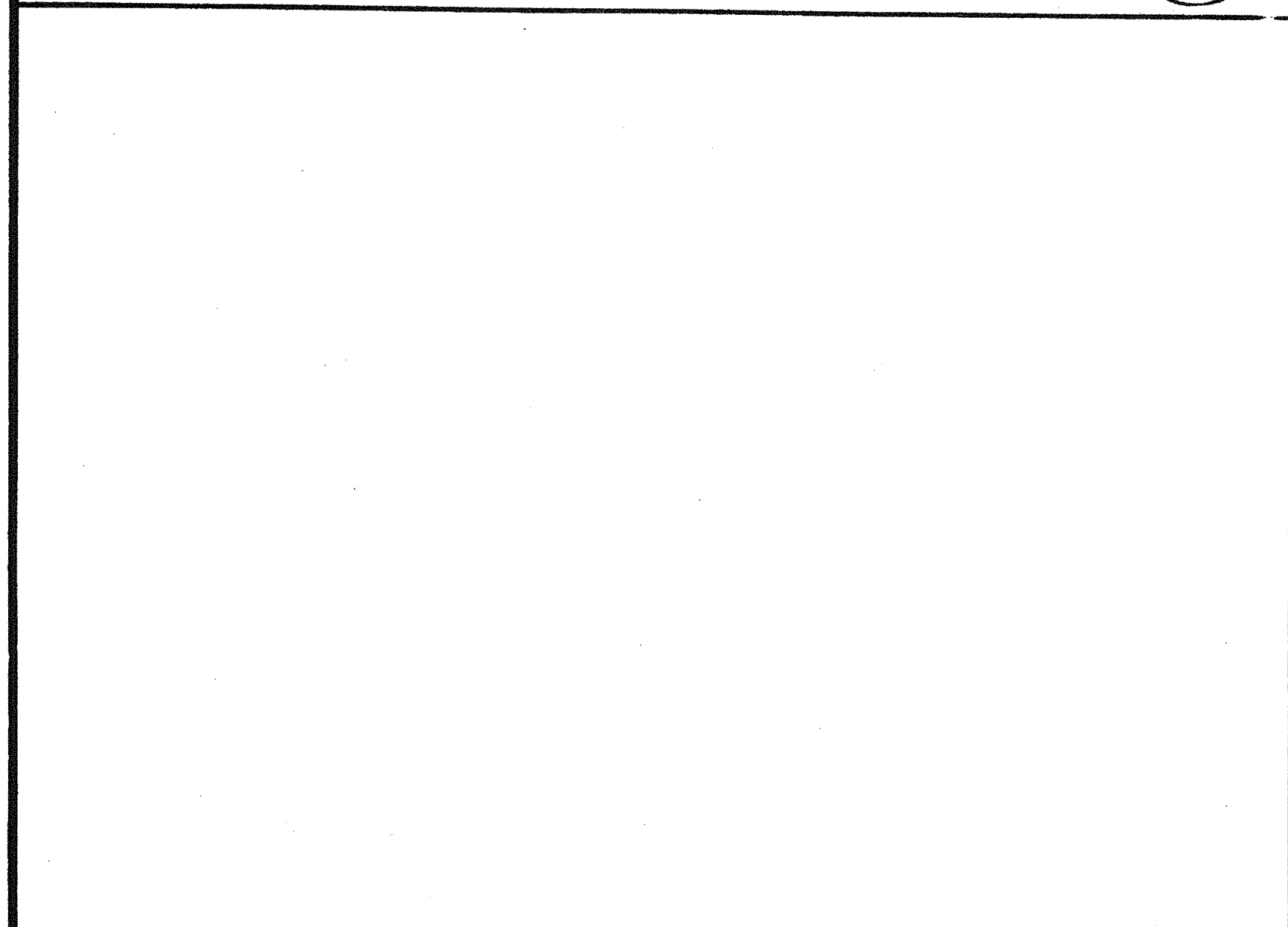
ALT. CONN. AT BOTTOM

4



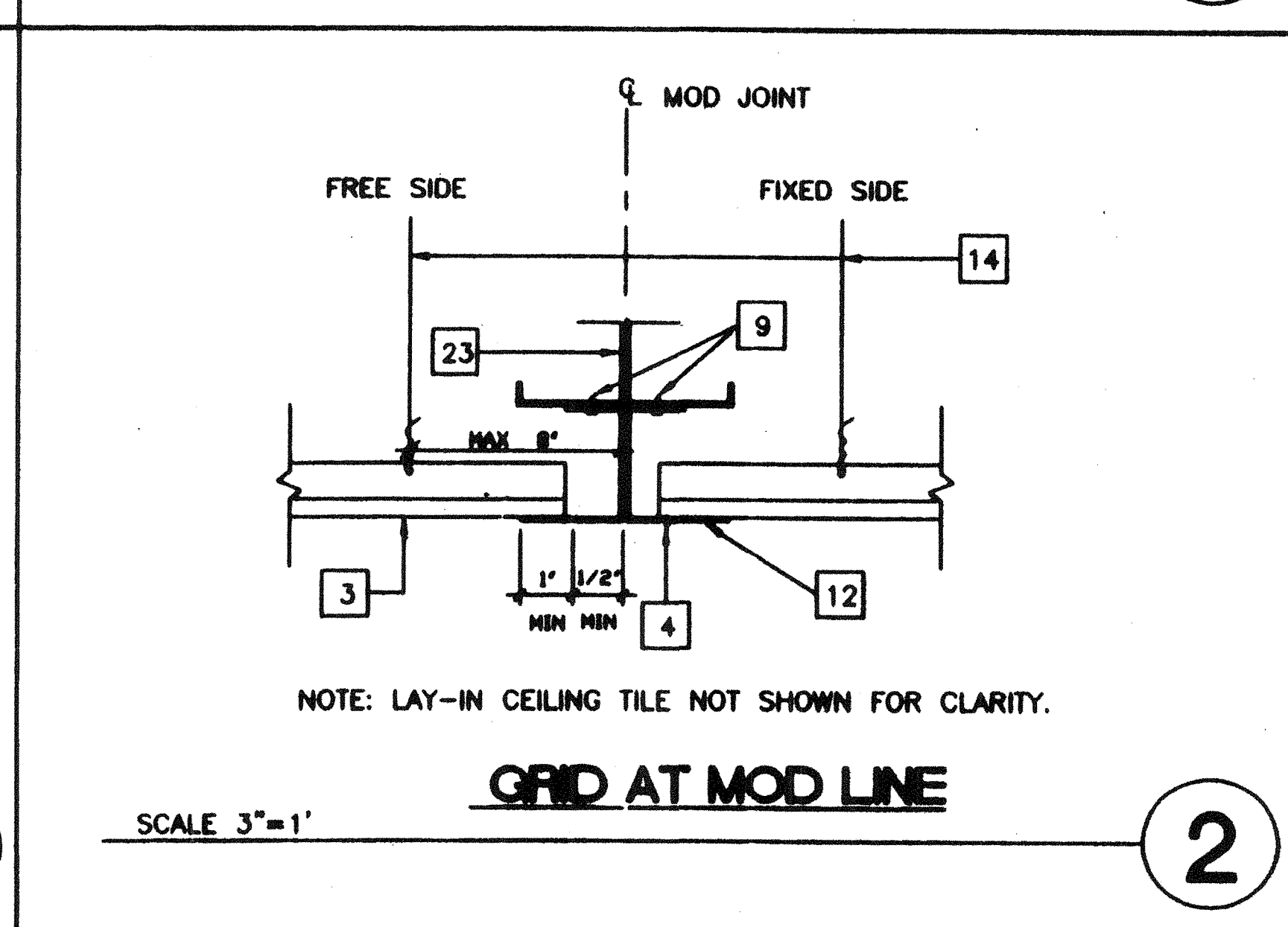
SEISMIC SPLAY - 4 WAY

1



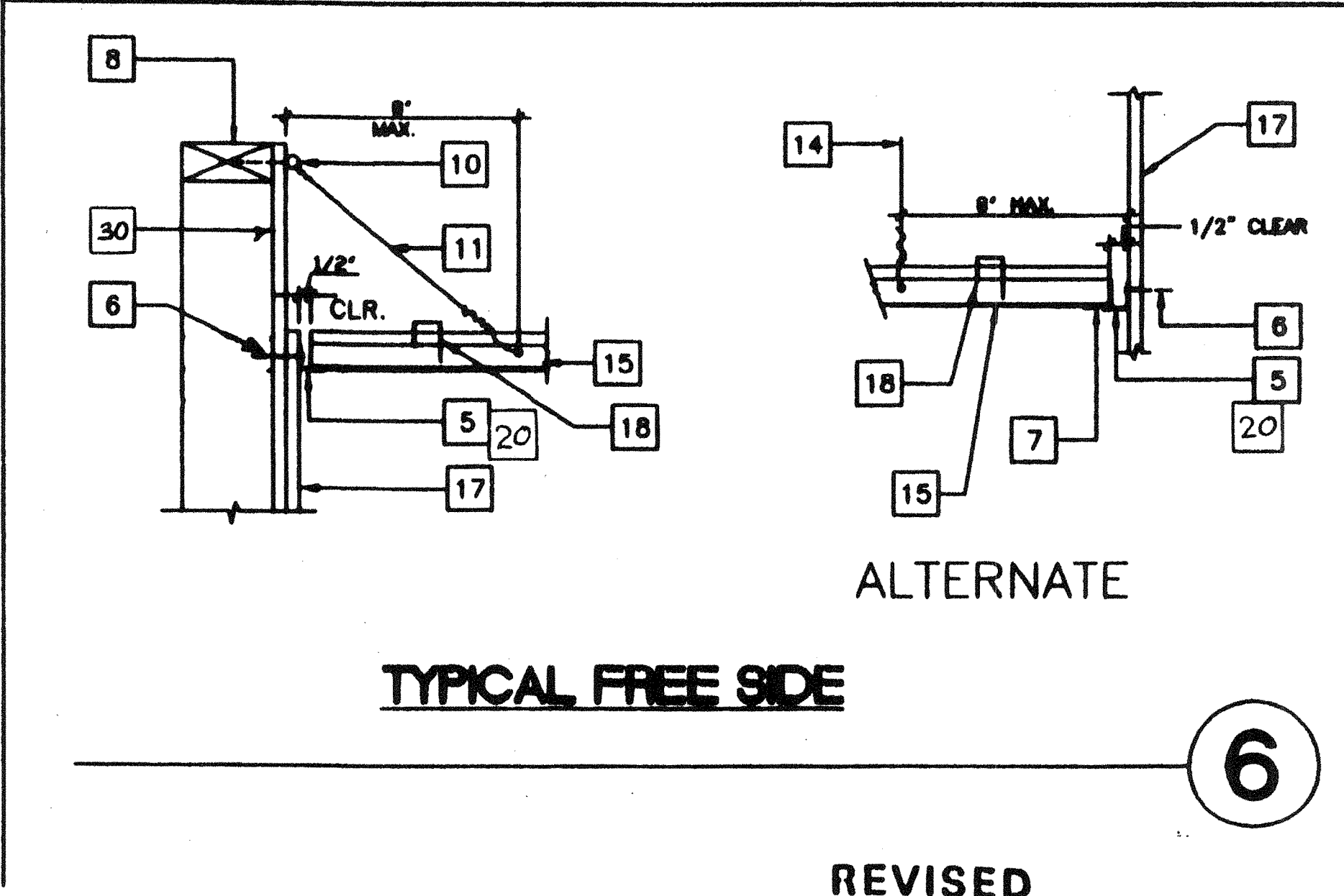
TYP. HANGER WIRE

5



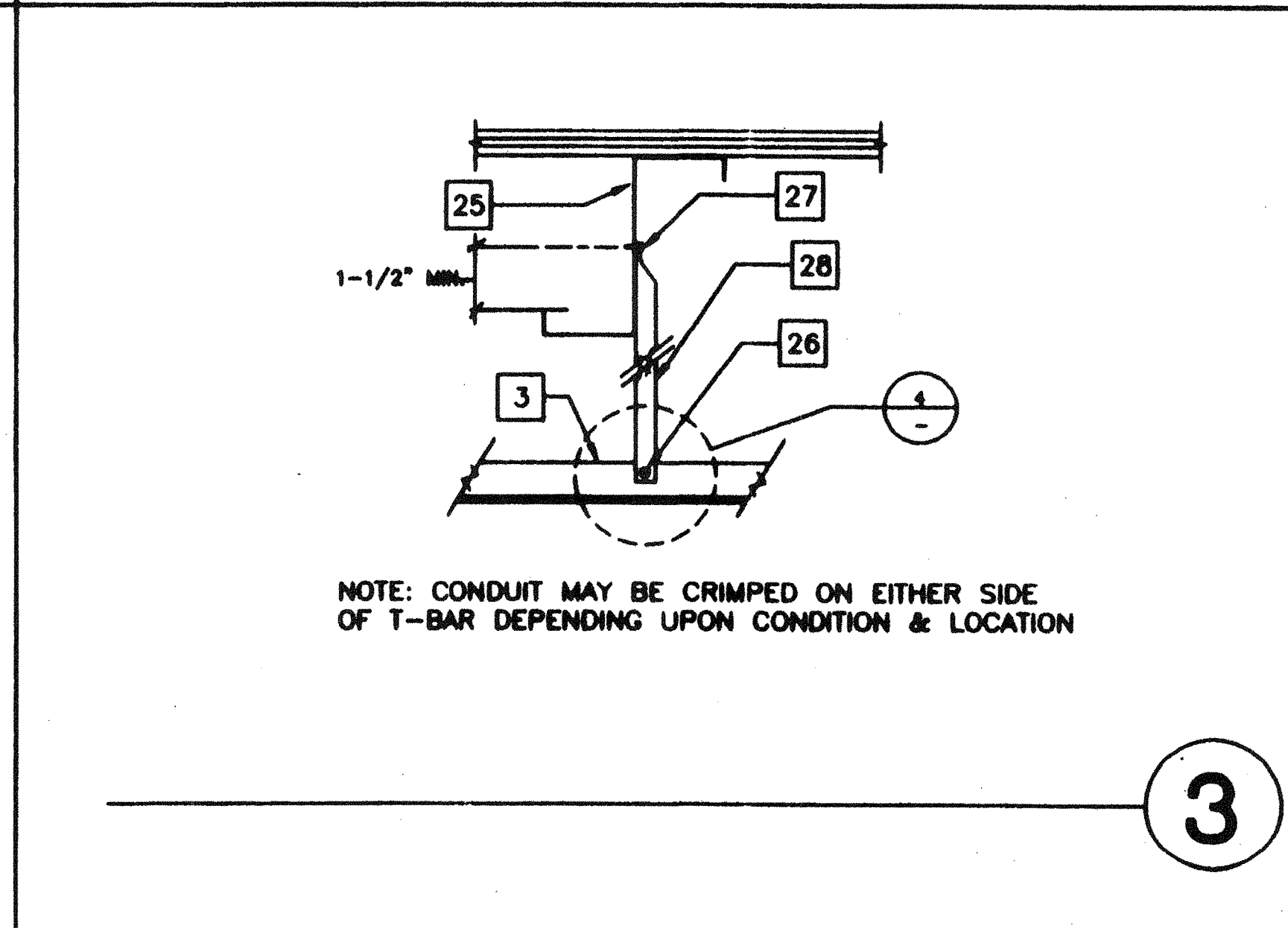
GRID AT MOD LINE

2



TYPICAL FREE SIDE

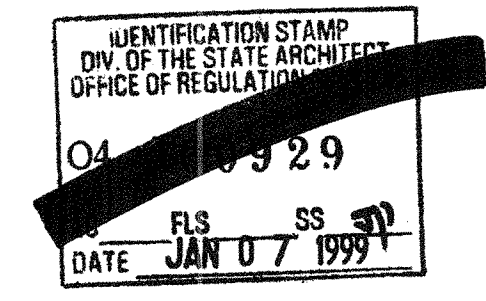
6



ALTERNATE

3

- KEY NOTES**
- 1 12GA. HANGER WIRE @ 4'-0" O.C. IN PUNCHED OR DRILLED HOLE
  - 2 12GA. WIRE WITH 4 WRAPS IN 1 1/2" (TYP.) WIRE TO RUN PERPENDICULAR TO MAIN TEE
  - 3 MAIN RUNNER
  - 4 1/8" POP RIVET TO EACH T-BAR
  - 5 WALL ANGLE
  - 6 6d 16" @ FRAMING TO WALL STUD
  - 7 ANGLE WITH 1/8" POP RIVET TO EACH T-BAR NO CONNECTION TO WALL ANGLE
  - 8 TOP PLATE
  - 9 #10 S.T.S.M.S. @ 4' O.C.
  - 10 3"x1/4" EYED SCREW W/2" EMBEDMENT
  - 11 HANGER TO WALL WHERE NO RAFTER ABOVE MAX SLOPE 1" IN 6"
  - 12 26 GA. REFLECTED CEILING MOUNT X 2" C
  - 13 CROSS TEE
  - 14 12GA. HANGER WIRE AT THE END ON EACH RUNNER MIN. 4 WRAPS IN MAX 1 1/2"
  - 15 MAIN RUNNERS OR CROSS TEES
  - 16 ACOUSTICAL BOARD
  - 17 FINISH WALL
  - 18 HORIZONTAL STRUTS SHALL RUN CONTINUOUS AT ALL PERIMETERS, NOT POP RIVETED TO THE WALL ANGLE ARMSTRONG #7425 OR #7445 WITH SPRING STEEL SNAP TO RUNNER PER IR 47-4
  - 19 NOT USED
  - 20 NO POP RIVETS
  - 21 NOT USED
  - 22 NOT USED
  - 23 NOT USED
  - 24 NOT USED
  - 25 ROOF PURLIN (RM)
  - 26 CRIMP CONDUIT AND ATTACH TO T-BAR GRID W/#8 TEKSCREWS
  - 27 CRIMP CONDUIT TO RAFTER W/2-#8 TEKSCREW
  - 28 3/4" E.M.T. CONDUIT
  - 29 NOT USED
  - 30 EXTEND GYP BRD TO ROOF



REVISIONS	Electrical Engineer's Seal	Mechanical Engineer's Seal	Structural Engineer's Seal	Architect's Seal	Division of the State Architect

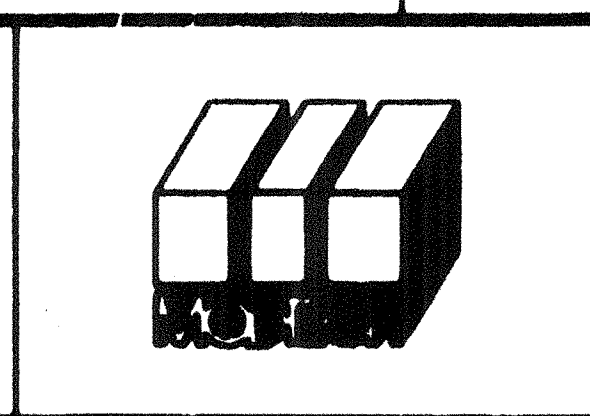
Electrical Engineer's Seal

Mechanical Engineer's Seal

Structural Engineer's Seal

Architect's Seal

Division of the State Architect



**MODTECH INC.**  
2830 BARRETT AVENUE  
PERRIS, CALIF. 92572  
PH (909) 943-4014  
FAX (909) 940-0427

PROJECT NUMBER: 2986

© MODTECH, INC. 1997  
IDENTIFICATION STAMP  
DIVISION OF THE STATE ARCHITECT  
OFFICE OF REGULATION  
117337  
DATE 01/24/99

drawn by: 1012-088  
checked by: 05 JAN 99  
project no: 2986

REFLECTED CEILING DETAILS

A7.1

FILE # P266 A71.DWG PROJECT NO. PC-266