

DOOR SCHEDULE **WINDOW SCHEDULE** **ROOM FINISH SCHEDULE** **NOTES**

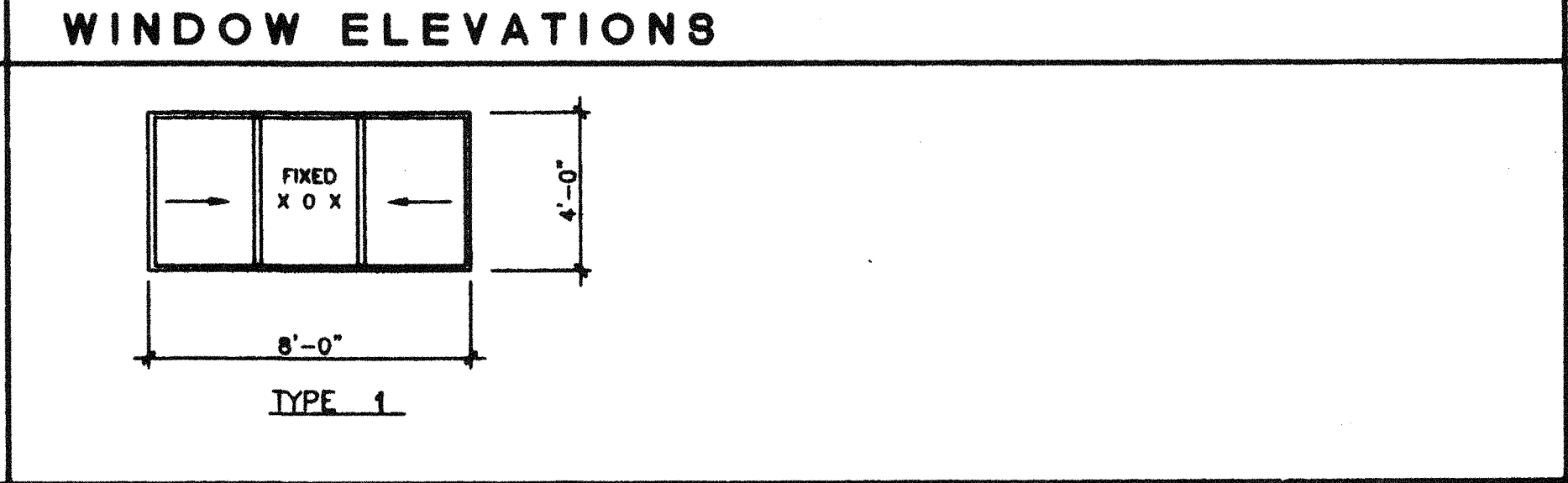
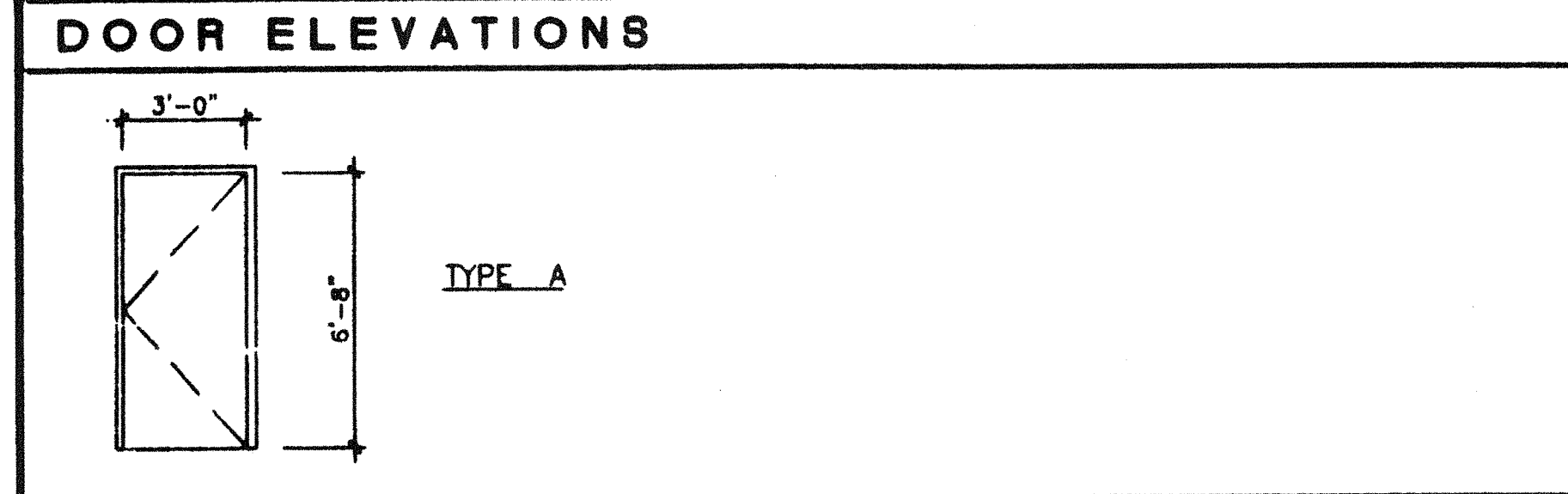
DOORS						FRAMES						NOTE NO.
DOOR NUMBER	FRAME OPENING SIZE	MATERIAL	TYPE	FIRE RATING	HARDWARE SET NO.	QUANTITY	MATERIAL	HEAD DETAIL	JAMB DETAIL	SILL DETAIL	JAMB THROAT	
1	3'-0" X 6'-8"	HM	A	NA	1		HM	7/A6.0	8/A6.0	1/A6.0	5-1/8"	

AMT.	TYPE	WIDTH	HEIGHT	FINISH	GLASS TYPE	LIN. NO.
2	I	8'-0"	4'-0"	ANODIZED	7/32" MIN, SOLAR GRAY 46%, DUAL GLAZE	A

ROOM NUMBER	ROOM NAME	FINISHES								REMARKS	
		FLOOR	BASE	WALLS				CEILING	CEILING HEIGHT		
1	CLASSROOM	A	D	F	F	F	F	F	L	8'-6"	

1. ALL FINISHES SHALL COMPLY WITH C.B.C. CHAPTERS 3,6,7,8, & 10 & C.F.C. & TITLE 19 C.C.R.

- HM - HOLLOW METAL
- AL - ALUMINUM
- SST - STAINLESS STEEL
- STL - STEEL FRAME. 16ga, FULLY WELDED, GALV • EXTERIOR, REPUBLIC "ME" SERIES. PAINT TO
- WWF - WINDOW WALL FRAME
- SC - SOLID CORE WOOD
- HC - HOLLOW CORE WOOD
- SCL - SOLID CORE WOOD (LEGACY)

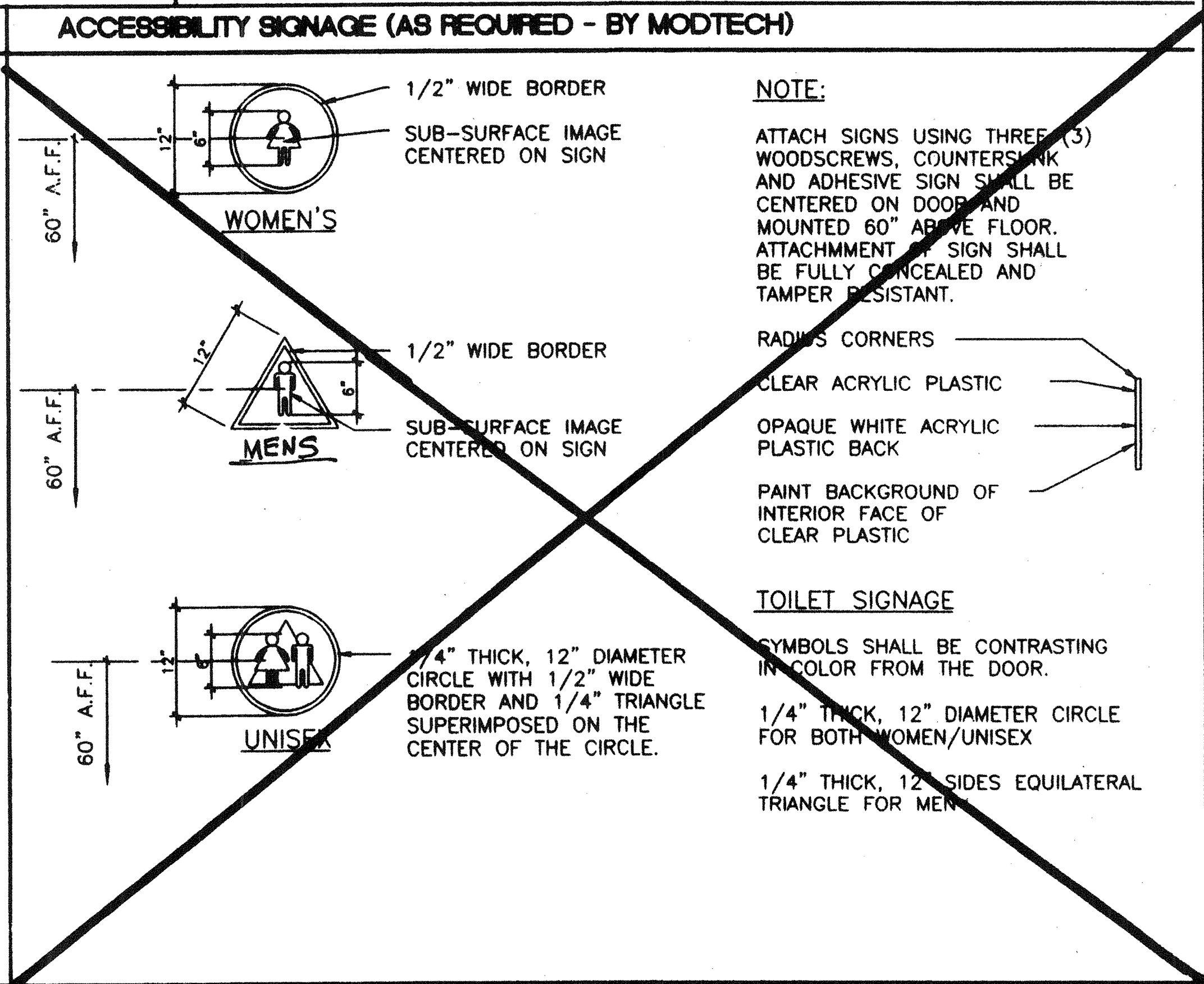
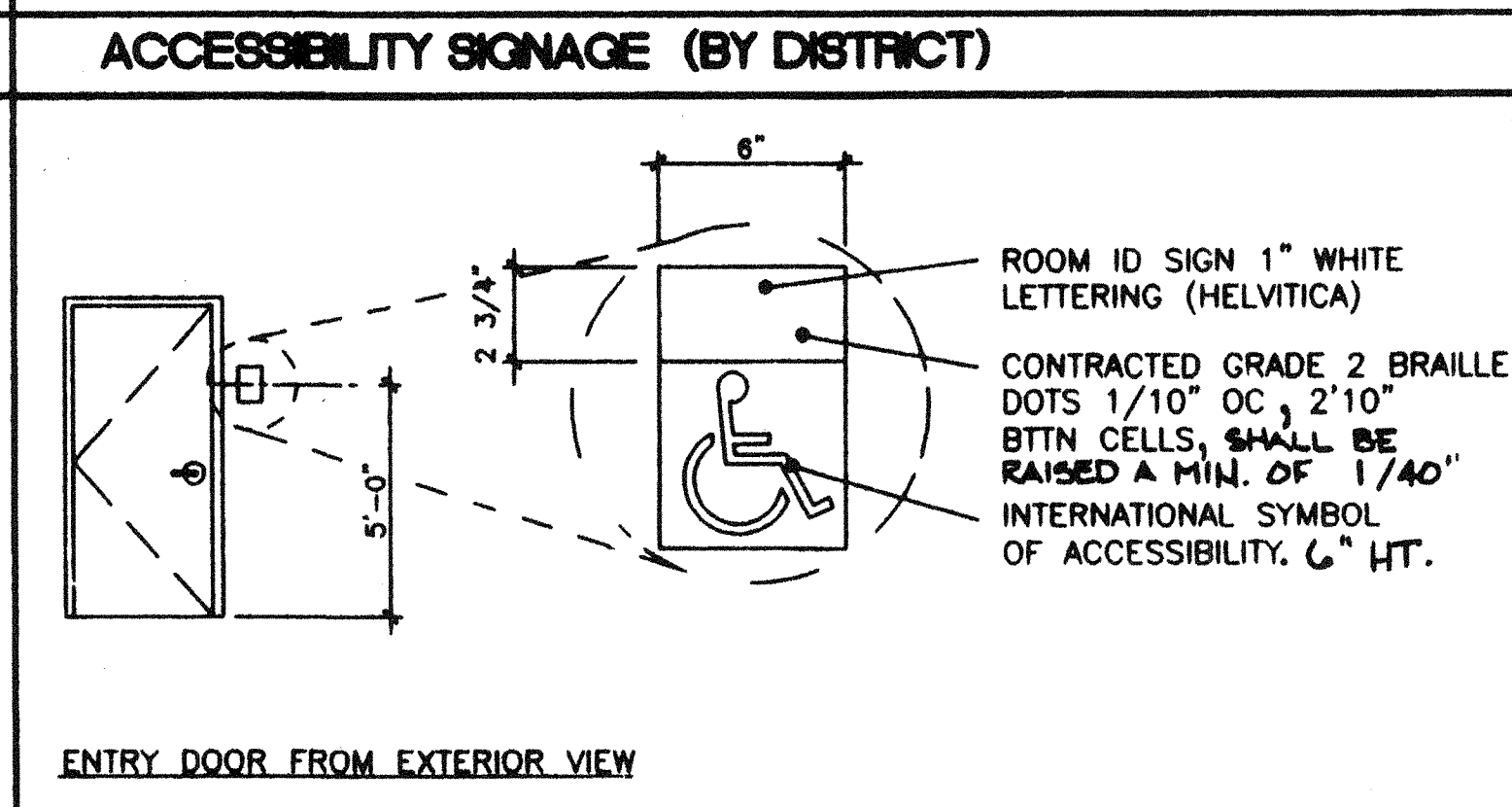


- DOOR NOTES**
- DOOR HANDLES FOR LOCKSETS TO BE CENTERED • 40" AFF & DEADBOLTS • 44" AFF. HARDWARE TO BE OPENABLE FROM THE INSIDE WITHOUT ANY SPECIAL KNOWLEDGE OR EFFORT LEVERS TO RETURN TO WITHIN 1/2" OF DOOR.
 - ALL DOORS SHALL BE 1-3/4" THICK UNO DOUBLE LETTERS IN SCHEDULE, INDICATES A PAIR OF DOORS.
 - CLOSURE SHALL BE SET FOR MAXIMUM OPENING PRESSURE OF 8.5 LBS • EXTERIOR DOORS AND 5.0 LBS • INTERIOR DOORS.
 - PLACE SIGN OVER EXIT DOORS: "THESE DOORS TO REMAIN UNLOCKED DURING BUSINESS HOURS" SIGNAGE IS NOT IN MODTECH CONTRACT

- WINDOW NOTES**
- 8040 XOX ANODIZED ALUMINUM, DUAL GLAZING, 7/32" MIN TEMPERED GLASS OF SOLAR GRAY WITH A LIGHT TRANSMISSION FACTOR OF 46%, ALL OPERABLE SASH SHALL HAVE SCREENS.

- FINISH NOTES**
- CARPET PER STATE OF CALIF SPEC COMPLYING WITH GROUP 1, TYPE A OR TYPE B, CLASS 2, DENSITY 4600, DIRECT GLUE DOWN .
 - VINYL SHEET FLOORING
 - VCT. ARMSTRONG STANDARD OR EXCELON
 - TOP SET BASE. 4" BURKE
 - TOP SET BASE. 6" BRIGANTINE OR SANDOVAL
 - WALL FINISH. 1/2" VINYL TACKBOARD CLASS 1 OVER 1/2" GYP BOARD BACKING
 - 1/2" W.R. GYP BOARD, TAPE, TEXTURE, PAINTED FINISH
 - 3/8" W.R. GYP BOARD, TAPE, TEXTURE, PAINTED FINISH
 - 1/2" GYP BOARD, TAPE, TEXTURE, PAINTED FINISH
 - 3/8" GYP BOARD, TAPE, TEXTURE, PAINTED FINISH
 - 3/32" F.R.P. OVER 1/2" W.R. GYP BOARD
 - ACOUSTICAL LAY IN GRID CEILING PANELS (SEE SPECIFICATIONS)

- HARDWARE SCHEDULE**
- HARDWARE SET #1 (FOR 36x40 BLDGS. & 48x40 BLDGS. USE HARDWARE SET #7)**
- LOCKSET - SCHLAGE D70PD, RHODES LEVER, OR EQUAL
 - BUTTS - 1-1/2 PAIR HAGER 1279 BB 4-1/2 x 4-1/2 NRP 26D OR EQUAL.
 - CLOSER - NORTON 8501 BFD / 900 BFD CAL ROYAL OR EQUAL.
 - THRESHOLD - PEMCO 271A OR EQUAL.
 - DOOR BOTTOM - PEMCO 216AV OR EQUAL.
 - WEATHERSTRIP - PEMCO 299AV OR EQUAL.
- HARDWARE SET #2 (INTERIOR PASSAGE)**
- LOCKSET - SCHLAGE D10S WITH RHODES LEVER, OR EQUAL
 - BUTTS - 1-1/2 PAIR HAGER 1279 4-1/2 x 4-1/2 OR EQUAL.
- HARDWARE SET #3 (INTERIOR / OFFICE LOCKABLE)**
- LOCKSET - SCHLAGE D53PD, WITH RHODES LEVER OR EQUAL
 - BUTTS - 1-1/2 PAIR HAGER 1279 4-1/2 x 4-1/2 26D
- HARDWARE SET #4 (INTERIOR / DOUBLE CLASSROOM LOCKABLE)**
- LOCKSET - SCHLAGE D66PD, WITH RHODES LEVER OR EQUAL
 - BUTTS - 1-1/2 PAIR HAGER 1279 4-1/2 x 4-1/2 26D
- HARDWARE SET #5 (INTERIOR TOILET ROOM / PRIVACY)**
- LOCKSET - SCHLAGE D40S OR EQUAL
 - BUTTS - 1-1/2 PAIR HAGER 1279 4-1/2 x 4-1/2 26D
- HARDWARE SET #6 (INTERIOR STOREROOM)**
- LOCKSET - SCHLAGE D80PD WITH RHODES LEVER OR EQUAL
 - BUTTS - 1-1/2 PAIR HAGER 1279 4-1/2 x 4-1/2 26D
- HARDWARE SET #7 (PANIC)**
- LOCKSET - VON DUPRIN 99L PANIC HARDWARE OR EQUAL
 - BUTTS - 1-1/2 PAIR HAGER 1279 BB 4-1/2 x 4-1/2 NRP 26D OR EQUAL.
 - CLOSER - NORTON 8501 BFD / 900 BFD CAL ROYAL OR EQUAL.
 - THRESHOLD - PEMCO 271A OR EQUAL.
 - DOOR BOTTOM - PEMCO 216AV OR EQUAL.
 - WEATHERSTRIP - PEMCO 299AV OR EQUAL.



REVISIONS

Electrical Engineer's Seal Mechanical Engineer's Seal Structural Engineer's Seal Architect's Seal

Division of the State Architect

IDENTIFICATION STAMP
DIV. OF THE STATE ARCHITECT
OFFICE OF REGULATION SERVICES

PC-206

AC. 11/23/99

DATE JUN 15 1997

MODTECH INC.

2830 BARRETT AVENUE
PERRIS, CALIF. 92572

PH (909) 943-4014
FAX (909) 940-0427

PROJECT NUMBER: 2986

© MODTECH, INC. 1997

SCHEDULES

drawn by: 4012-088

checked by: 05 JAN 99

date:

Modtech project no:

MODTECH Index No.

A5.0

STKP-42

11/24/98

PROJECT NO. 2986