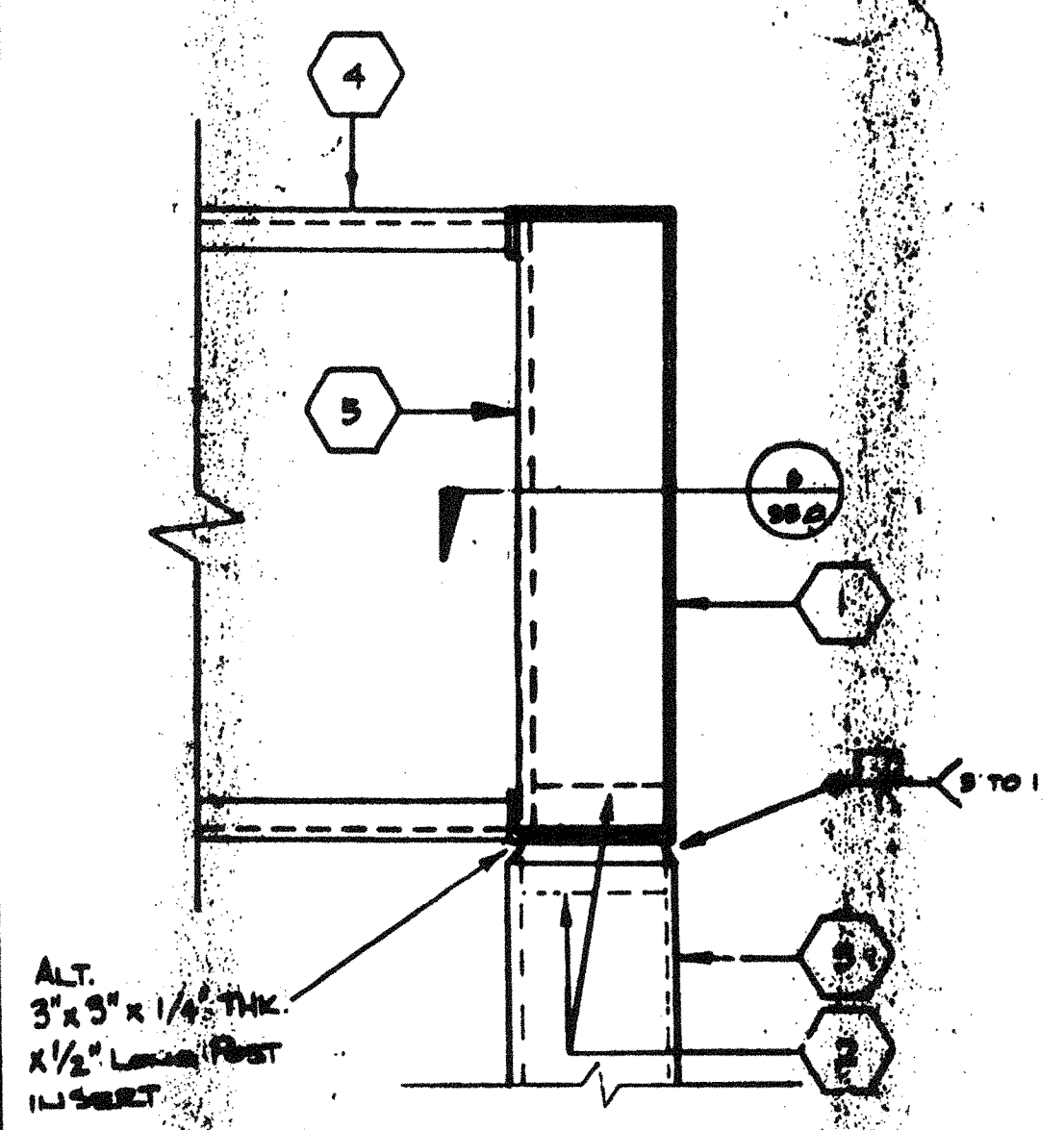
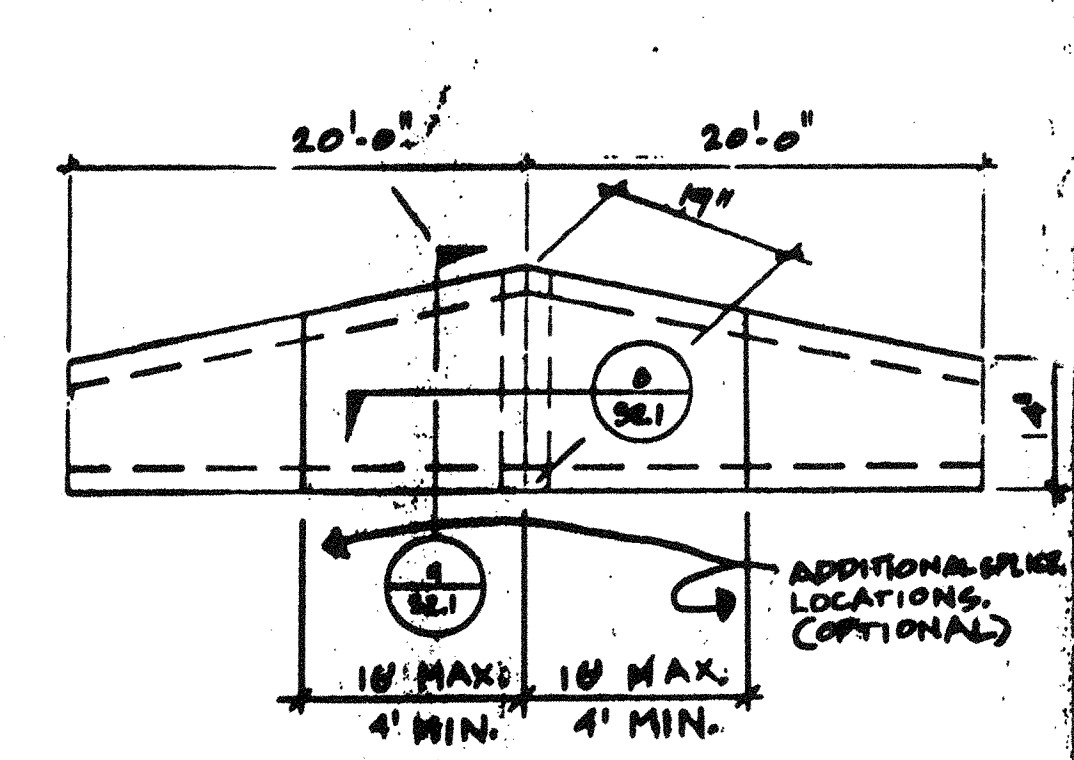


KEY NOTES

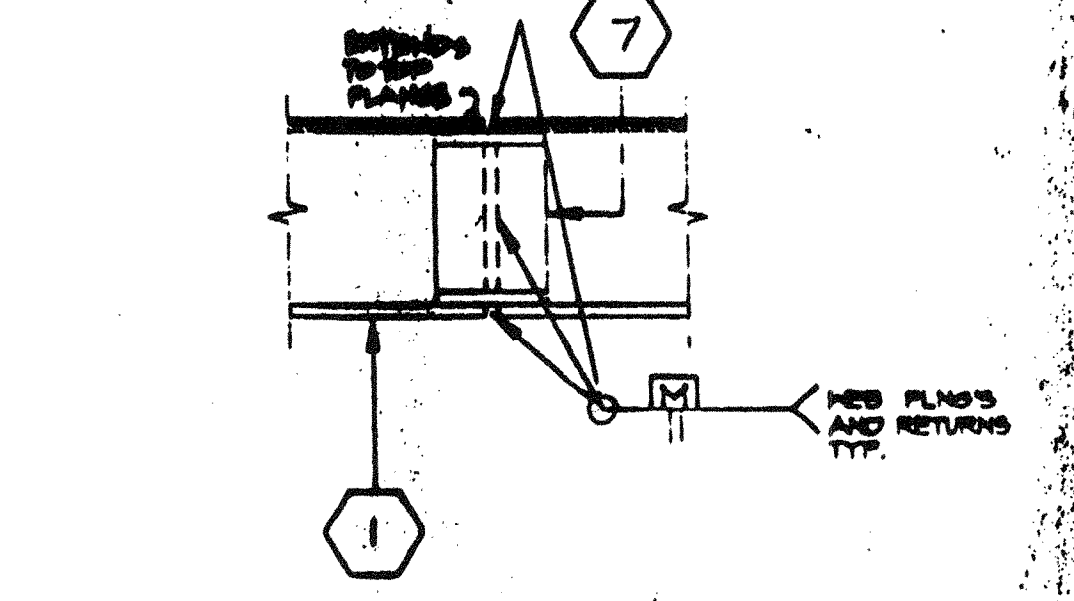
- 1 10GA. TAPERED RF. BM. SEE 7/52.1 & 1/92.1
- 2 BACK-UP PLATE MIN. 10GA.
- 3 3 1/2"x3 1/2"x1/4" COLUMN
- 4 [14"x10GA. RF. FOR SEE 5/52.1
- 5 3 1/2"x3 1/2"x1/4" TUBE COPE TO FIT RF. BM.
- 6 FLOOR JOIST SEE 6/52.1
- 7 10GA. BENT PLATE BACK-UP
- 8 1/4" STIFFENER PL.
- 9 #10 STMS @ 6" O.C. (SEE 51.0)
- 10 PLYWOOD FLOOR SHEATHING
- 11 FLOOR BEAM SEE 5/52.1
- 12 5"x8"x1/4" P.



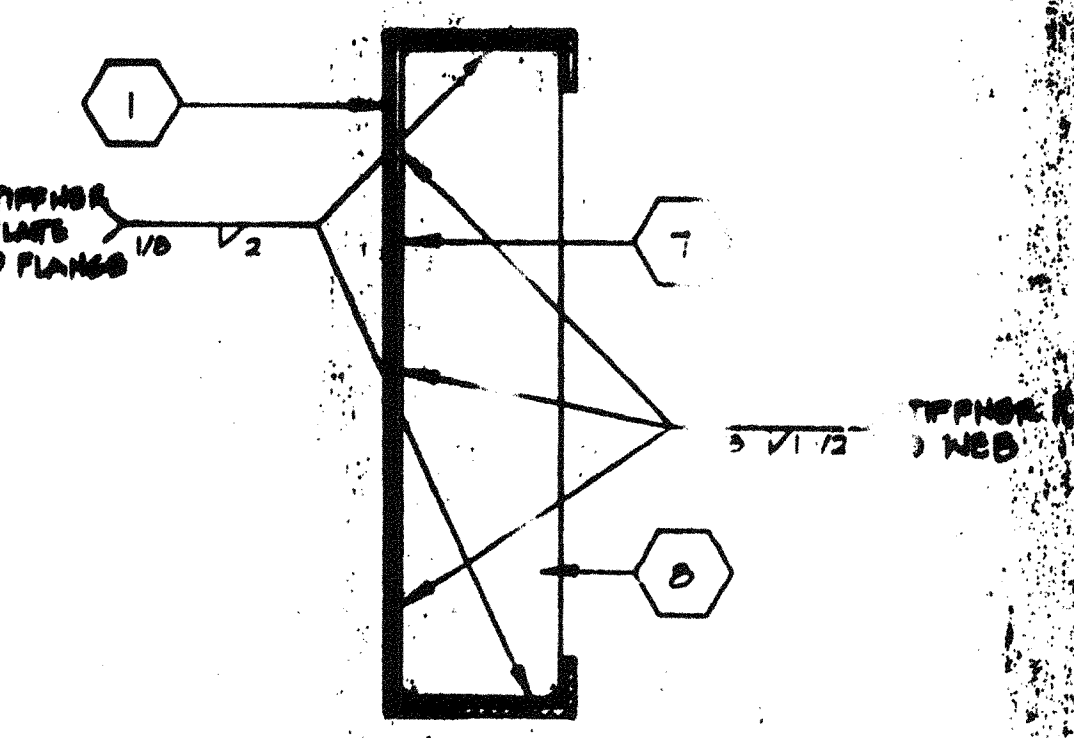
SCALE: 3"=1'
COLUMN CONN. @ ROOF



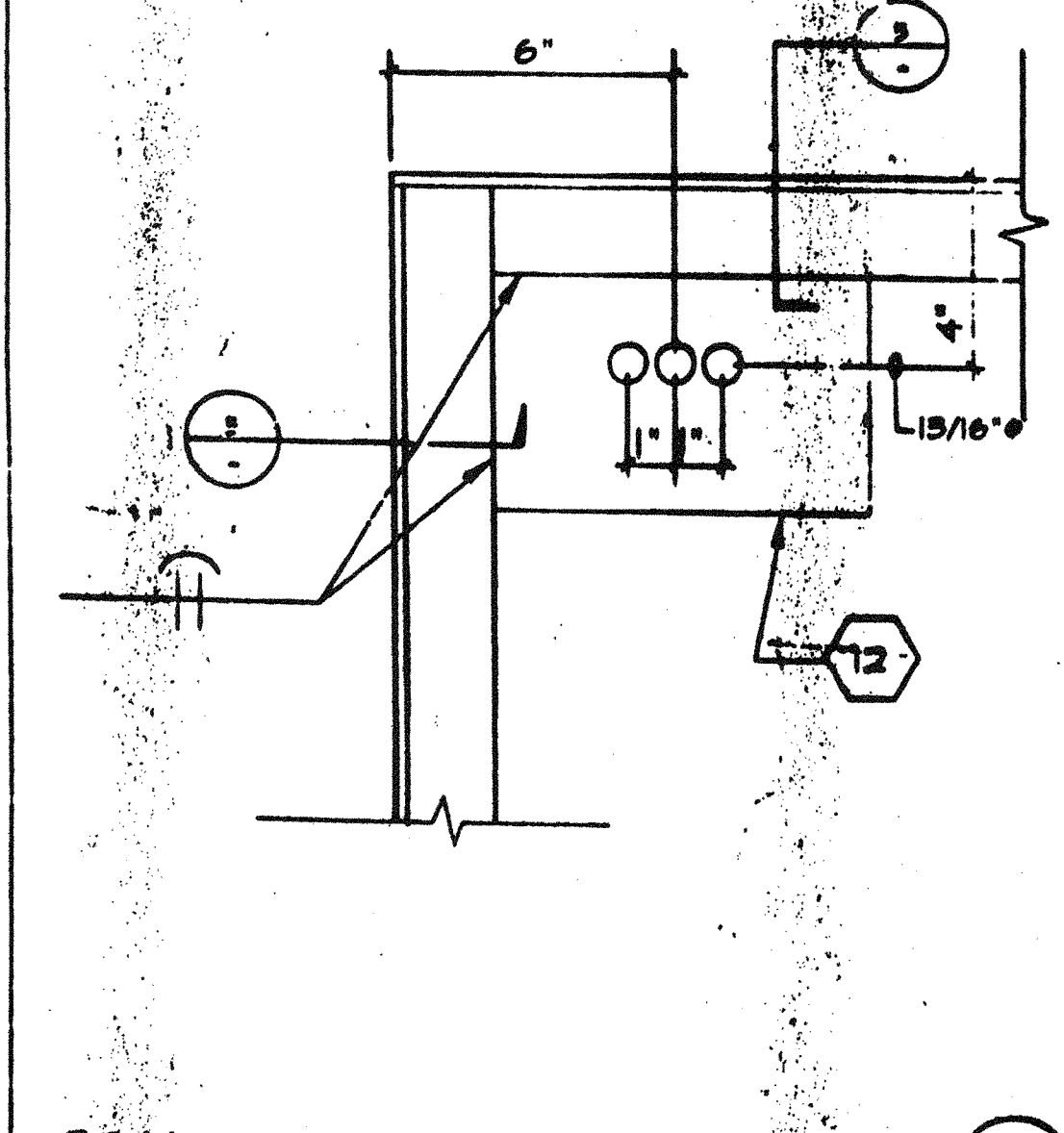
SCALE: 1/2"=1'
FASCIA @ SIDEWALL (DUAL PITCH)



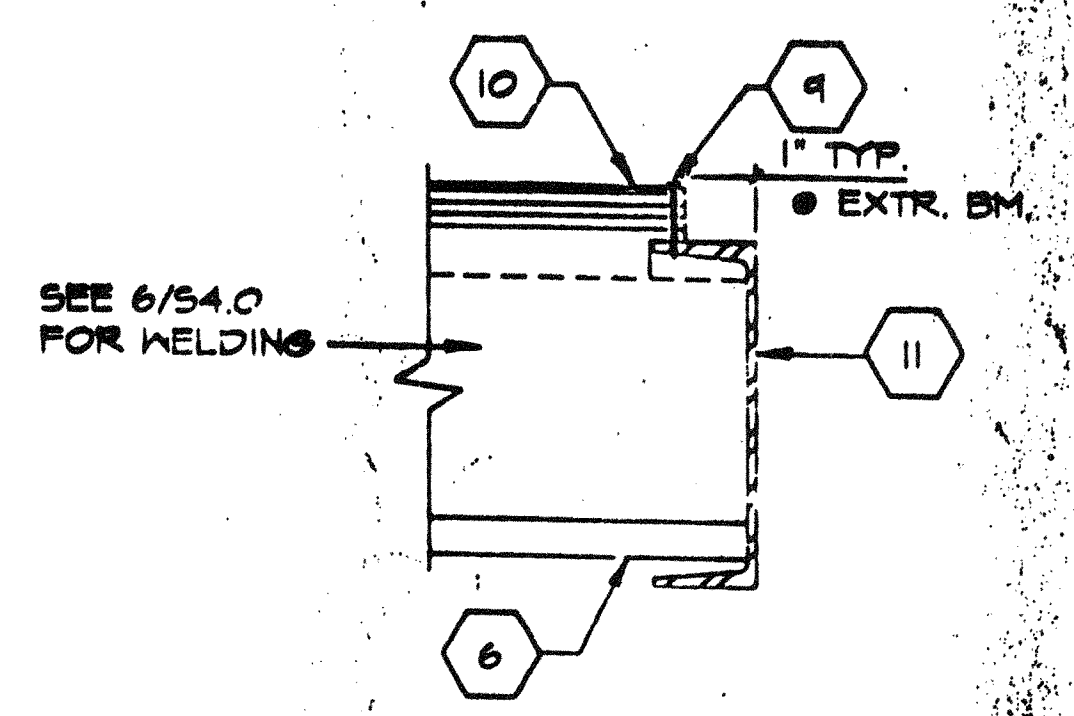
SCALE: 3"=1'
BEAM SPLICE



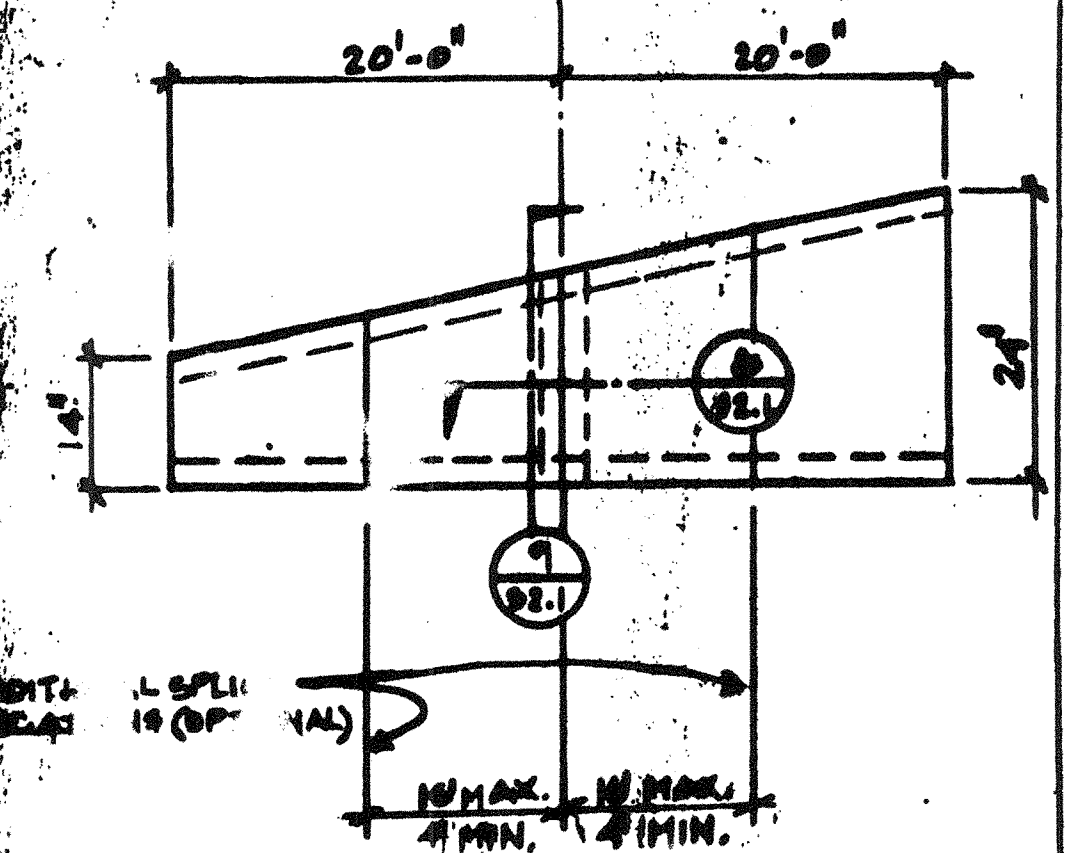
SCALE: 3"=1'
BEAM SPLICE W/STIFFENER



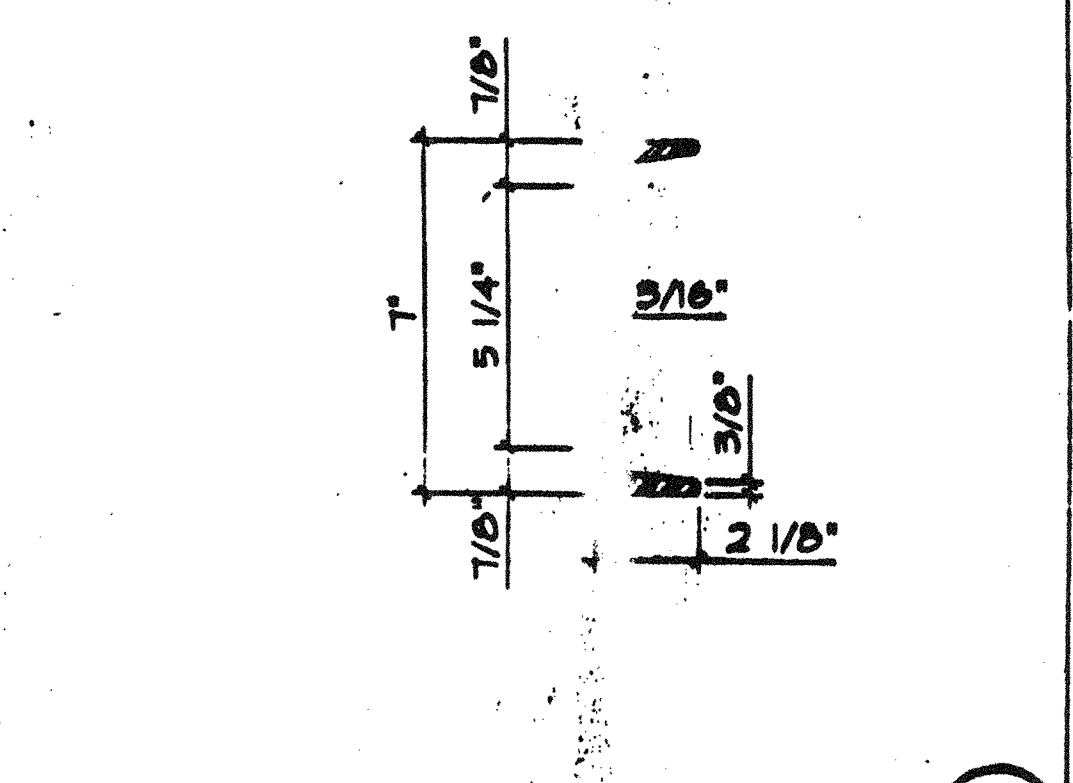
SCALE: 3"=1'
ANCHOR PLATE @ CONG. FOUND.



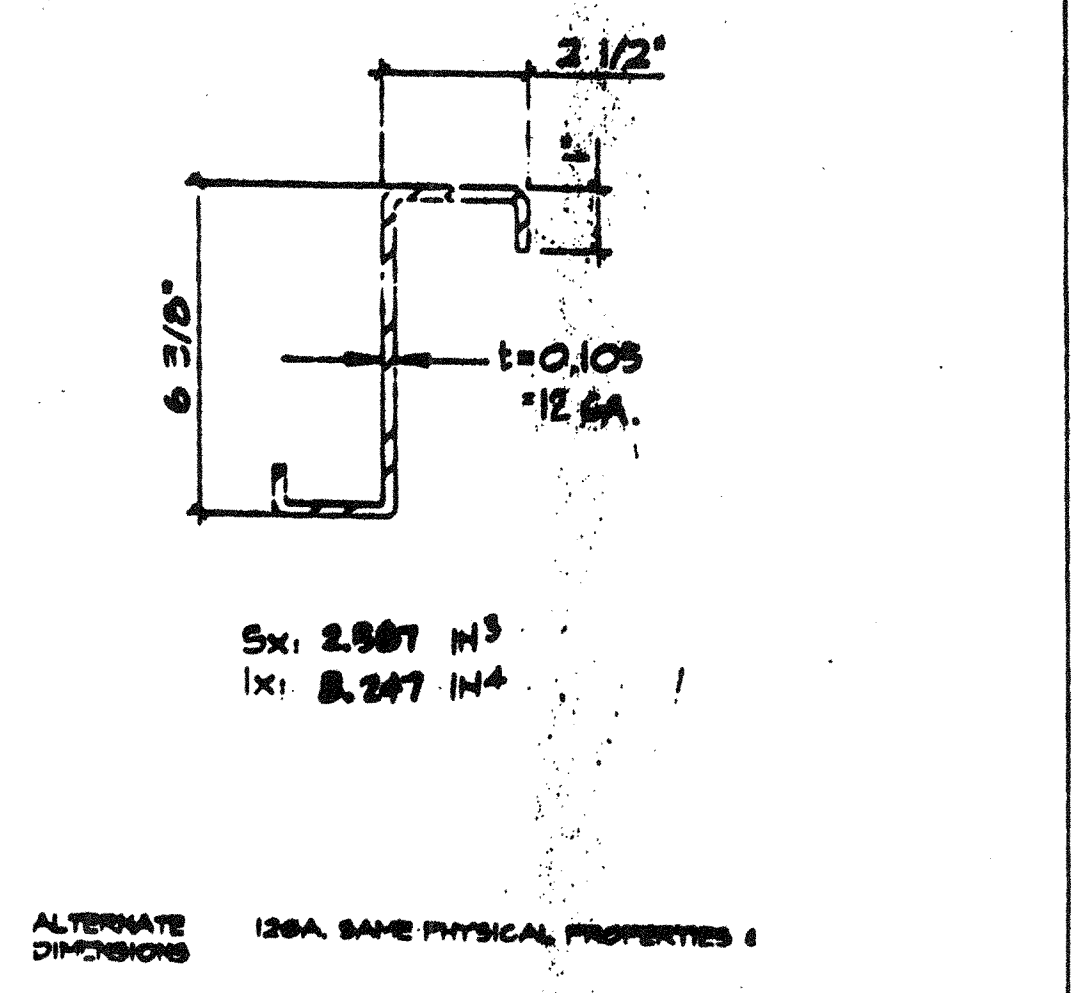
SCALE: 3"=1'
FLOOR @ FLOOR BEAM



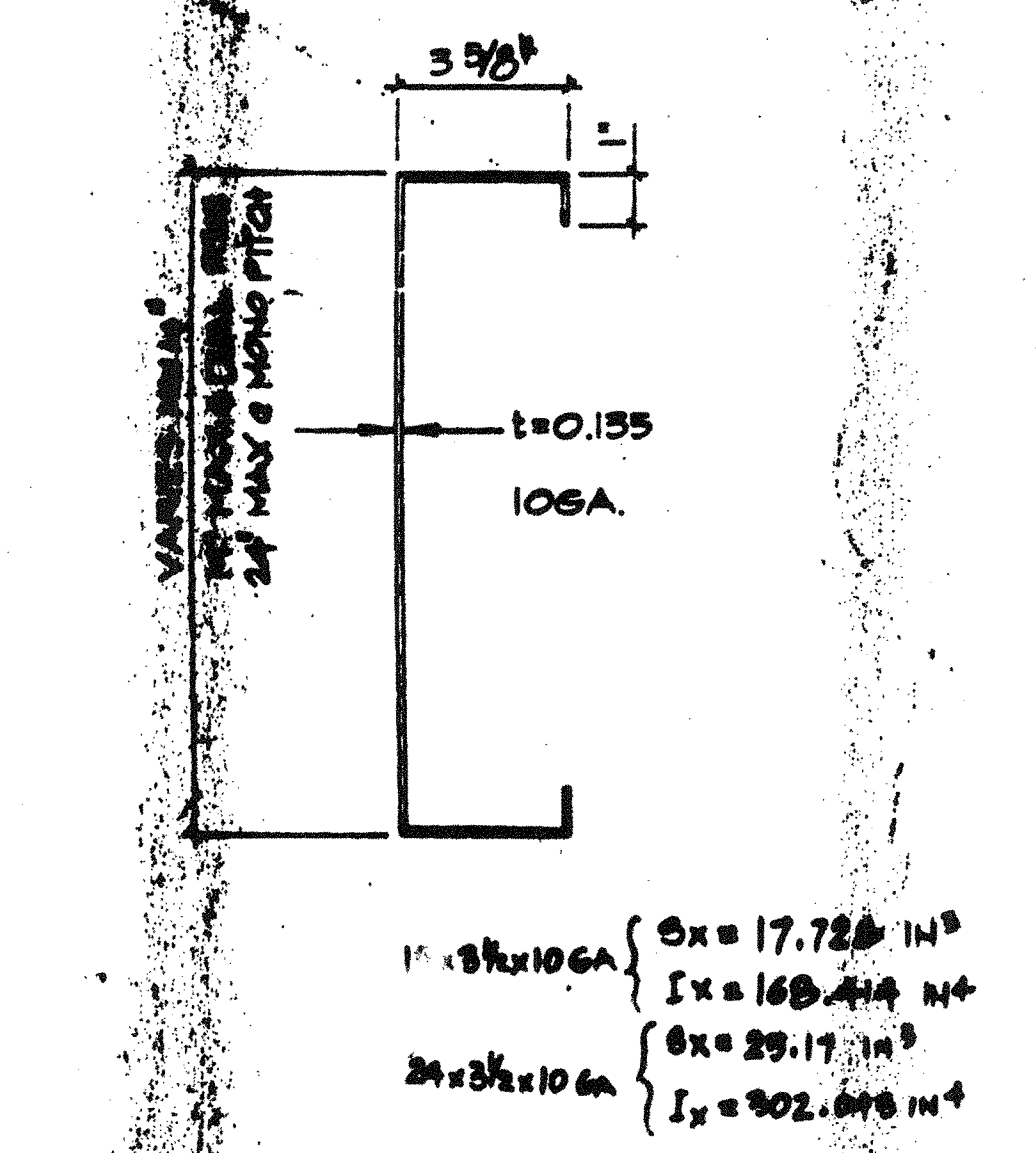
SCALE: 3"=1'
FLOOR JOIST



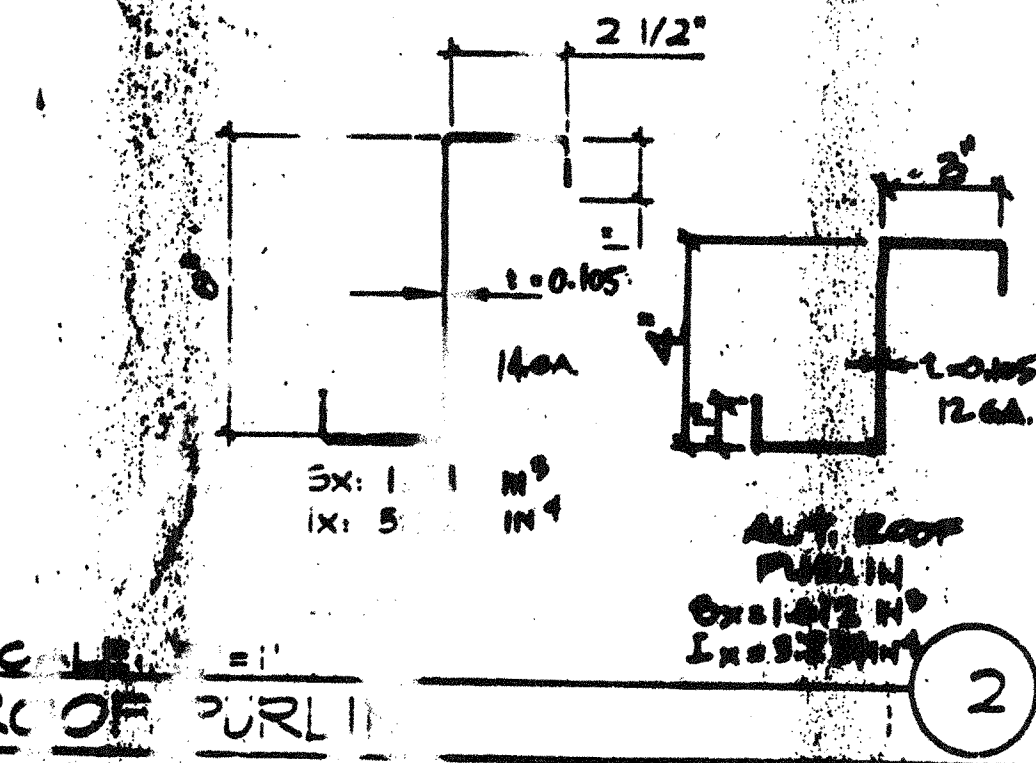
SCALE: 3"=1'
FLOOR BEAM CT



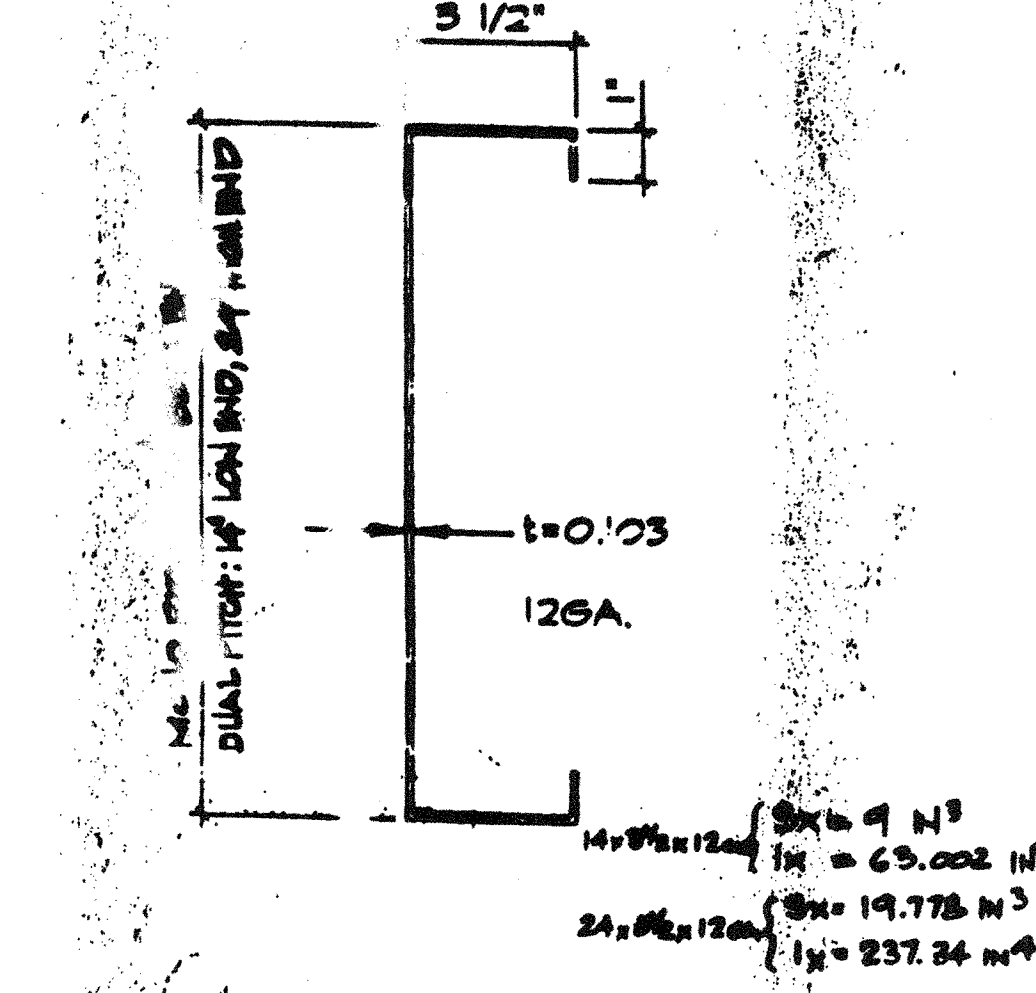
SCALE: 3"=1'
FLOOR JOIST



SCALE: 3"=1'
TAPERED ROOF BEAM

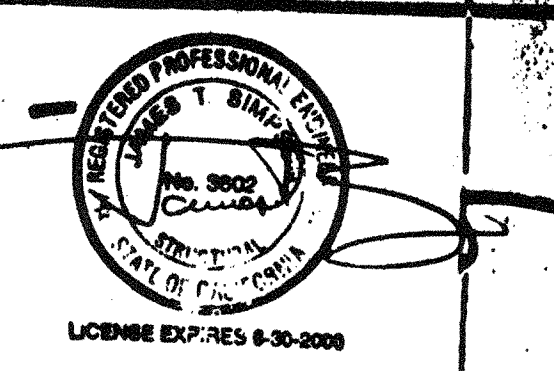
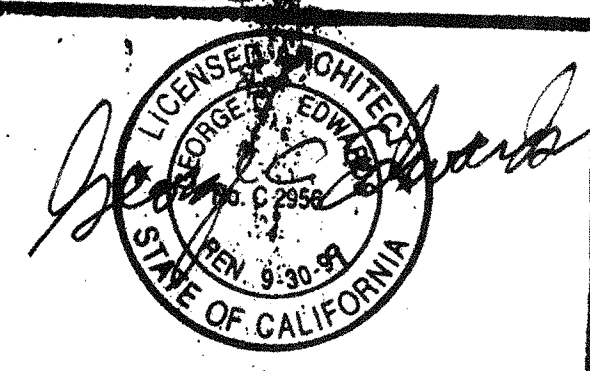


SCALE: 3"=1'
ROOF PURLIN

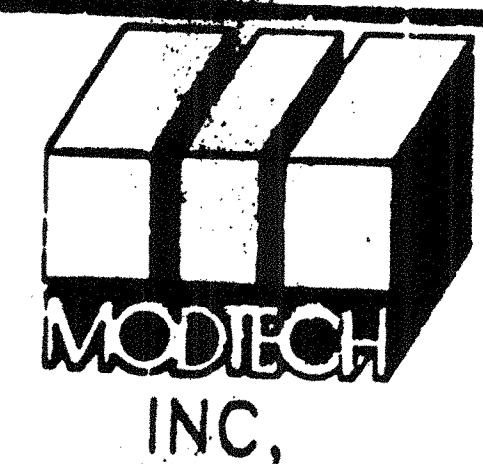
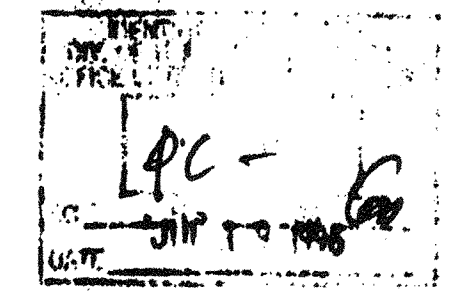


SCALE: 3"=1'
ROOF HEADER

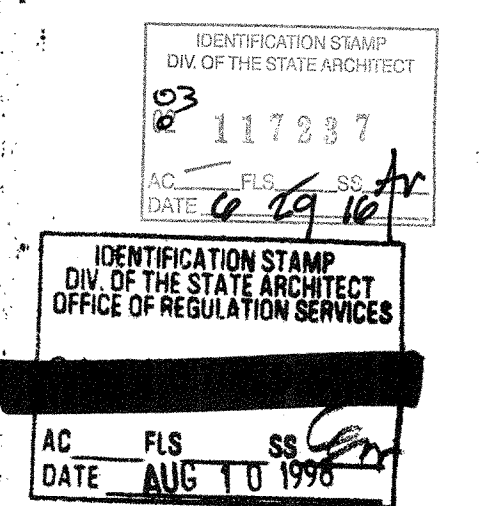
ARCHITECT ELECTRICAL STRUCTURAL MECHANICAL FIRE MARSHAL ACCESS COMPLIANCE STRUCTURAL SAFETY



REVISED
SEP 21 1996



STRUCTURAL DETAIL S2.1



STKP-38

© MODTECH, INC. 1994

DRANK BY
DATE
CHECKED BY
DATE

4012-084

S2.1