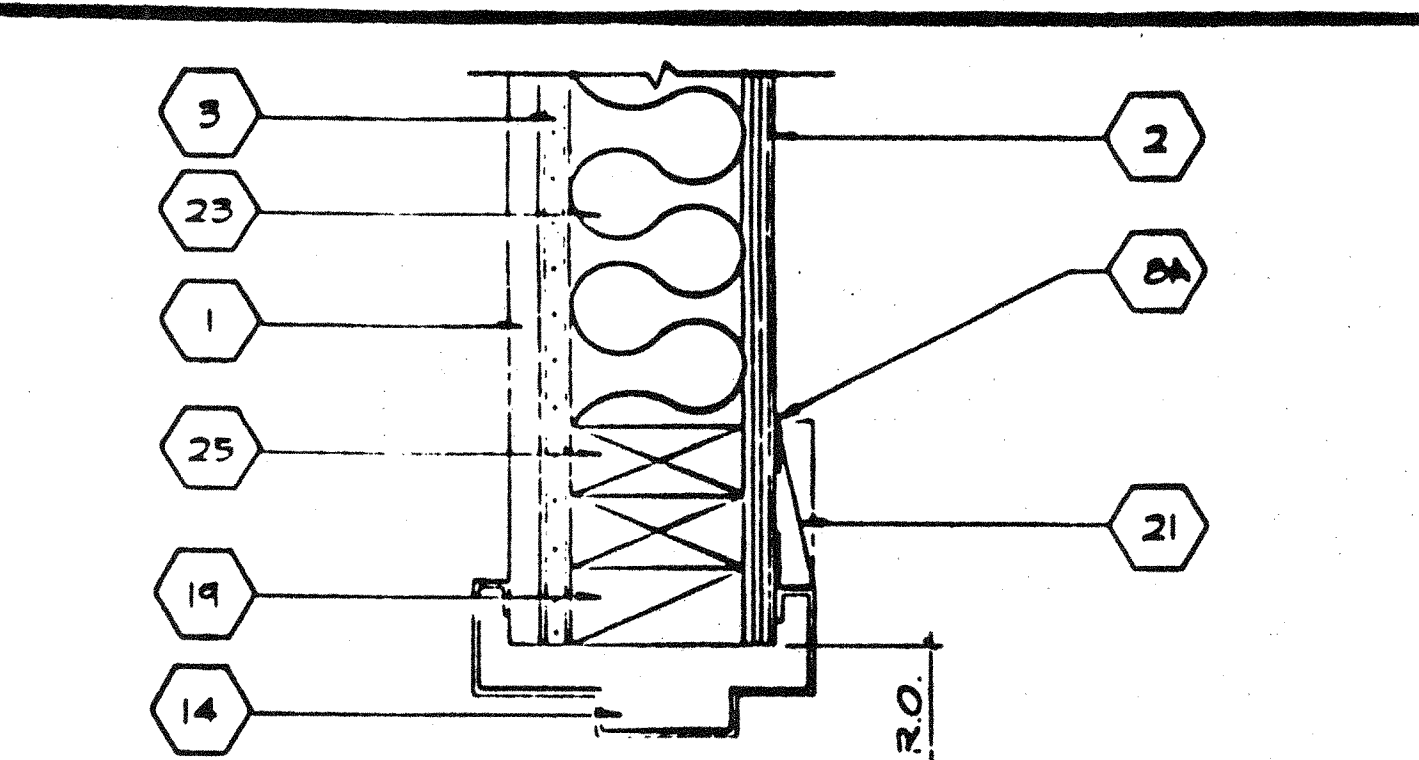
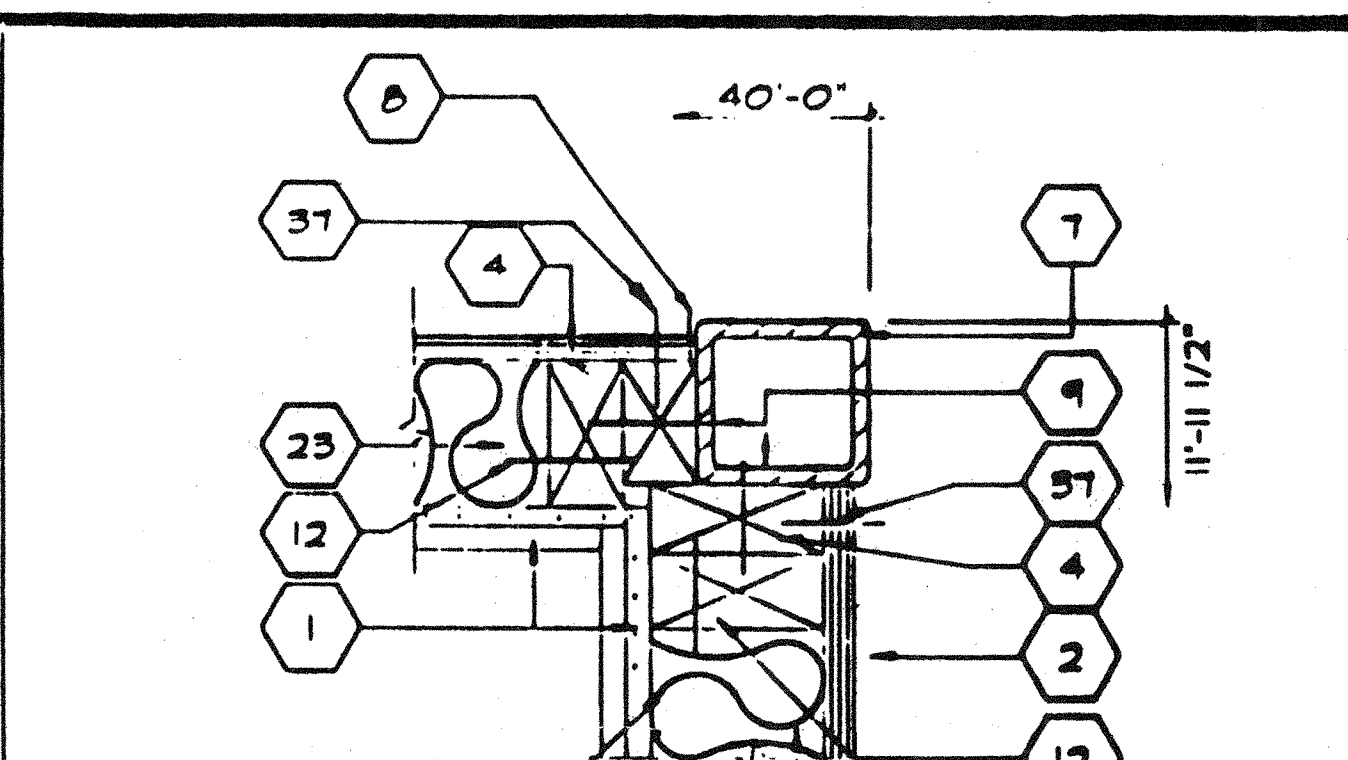


SCALE: 1-1/2"=1'
SILL PLATE (12)



SCALE: 5"=1'
DOOR JAMB (8)



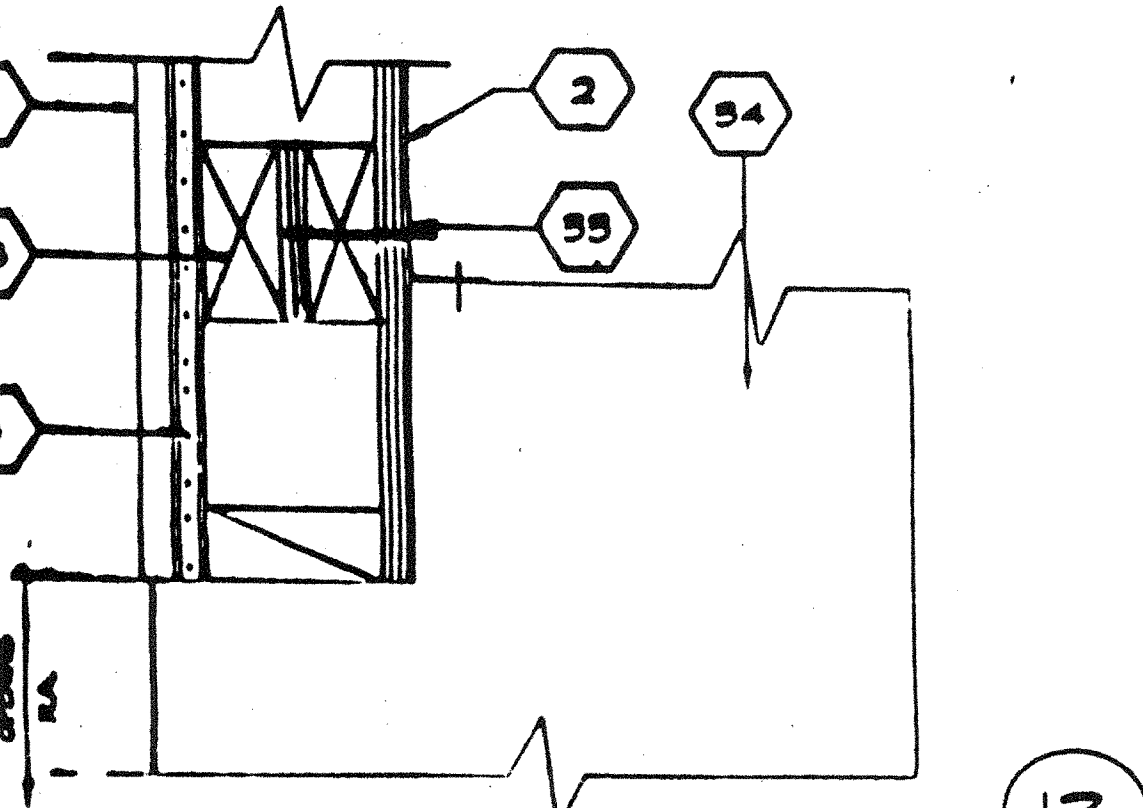
SCALE: 5"=1'
CORNER COLUMN (4)

(56) 2x6 LET-IN (SEE WALL FRAMING SHT 99.0)
 (57) EN. 6d BOX ELEGRO GAL. @ 6" O.C. MAX.
 FN. @ 12" O.C. MAX.
 (58) CLOSURE SCREEN
 (59) OFFER MOLDING
MANUFACTURE NOTE:
MARVAR, BARD, NORDYNE
PER APPROVED INSTALLATION AS DESIGNED BY MFG.

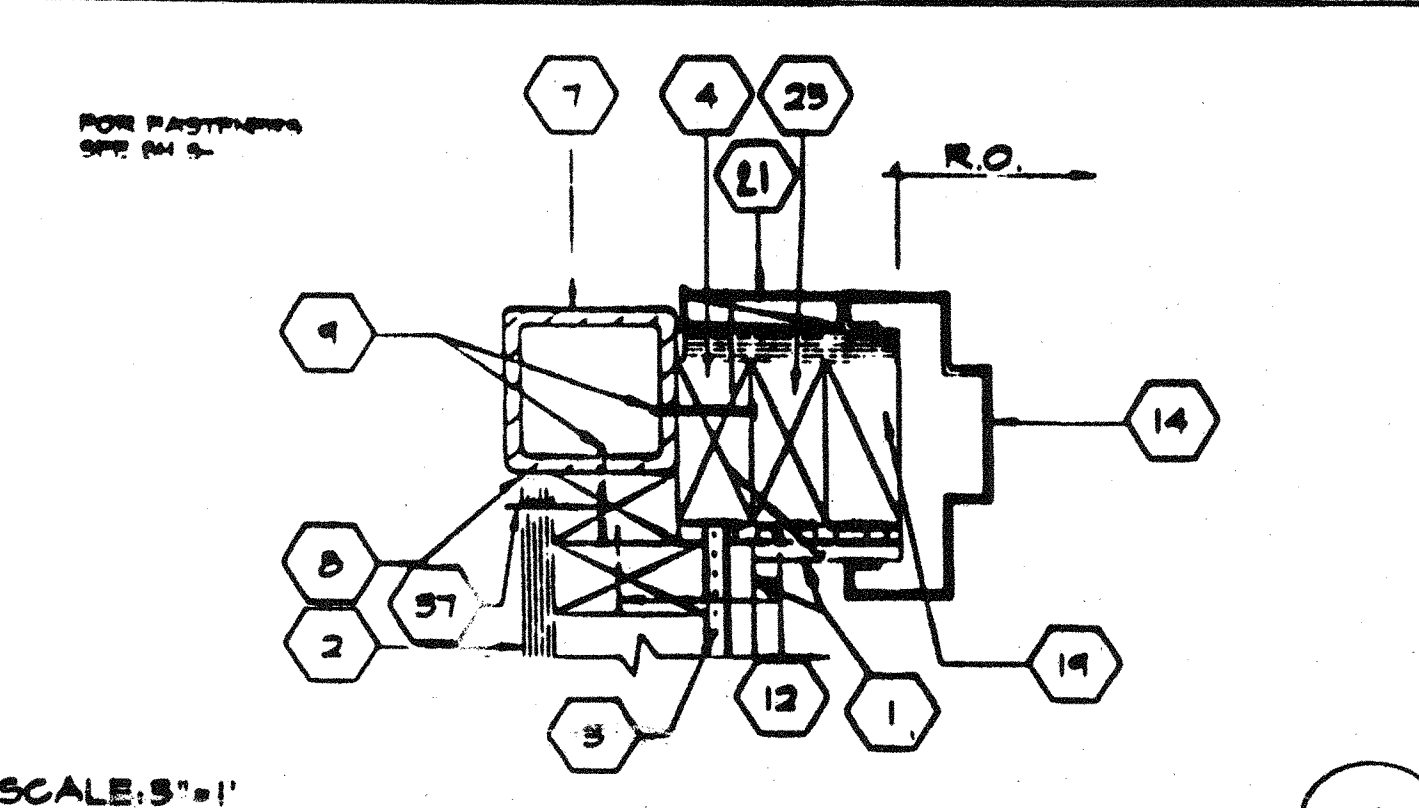
NOTES
 A. EN 6d ELEGRO GAL. @ 6" O.C.
 B. FN 6d ELEGRO GAL. @ 12" O.C.

KEY NOTES

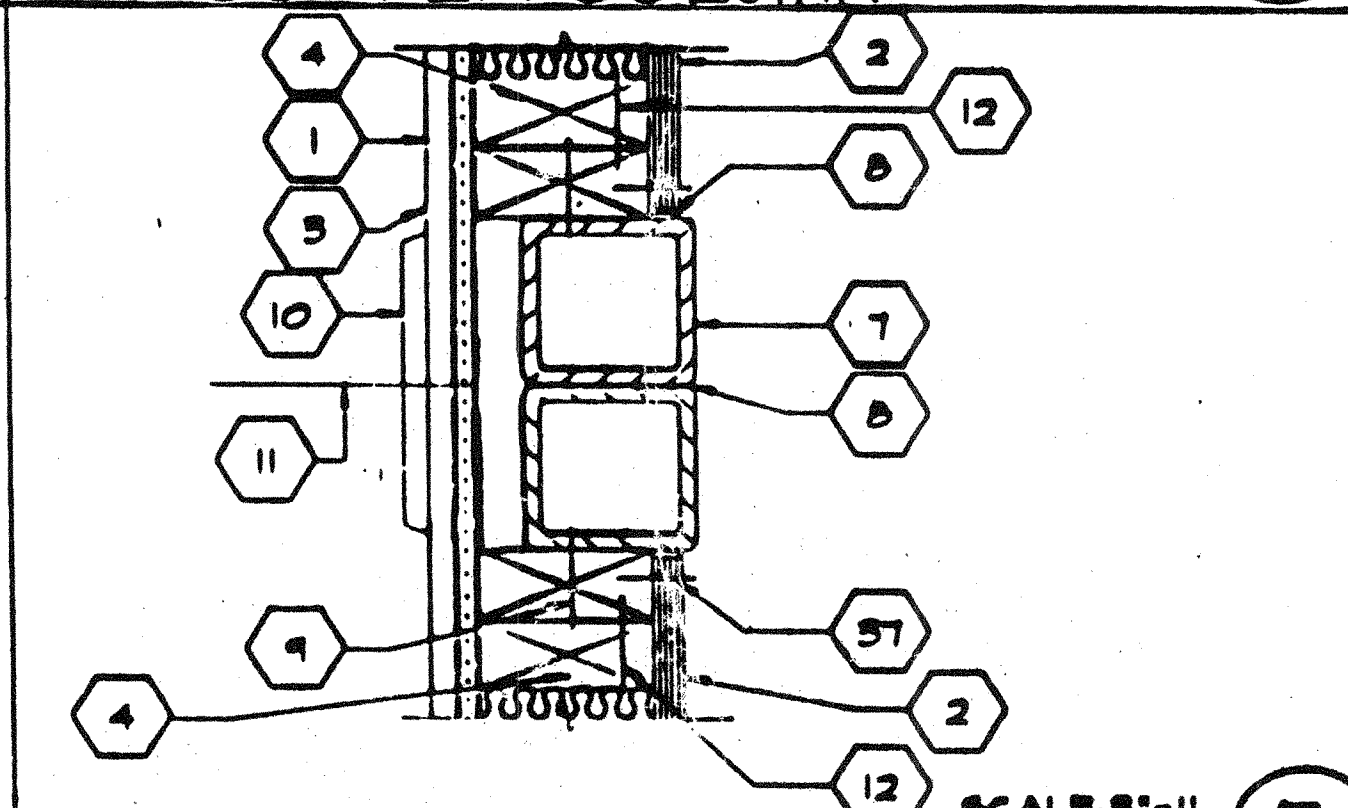
- (1) TYP. INTERIOR FINISH (SEE FINISH SCHED)
- (2) TYP. EXTERIOR FINISH
- (3) 1/2" GYPSUM BOARD BACKING W/ 7d COOLER NAILS @ MAX 12" O.C. TYP. @ EA STUD
- (4) 2x4 STUD TYP @ 16" O.C. MAX.
- (5) 16d @ 16" O.C. MAX.
- (6) DRIP FLASH
- (7) TUBE STEEL COLUMN (SEE STRUCTURAL)
- (8) SEALANT (TYP.) (5A) SEALANT BONDING TRIM
- (9) NO S.T.S.M.S. @ MAX 24" O.C.
- (10) 2X FILLER TO COLUMN SEE STRUC. FOR CORR (ALT. MILT DMS2 PD SHOT PIN)
- (11) VINYL CLOSURE
- (12) MODULE JOINT
- (13) 16d @ 24" O.C. FACE NAIL OR 16d @ 12" O.C. TOE NAIL
- (14) FLOOR BEAM (SEE STRUCTURAL)
- (15) PRESSED STEEL FRAME (K.D. TYPE SEE AS 0)
- (16) ALUMINUM THRESHOLD (SEE HARDWARE SCHEDULE)
- (17) FINISH LANDING SEE FLOOR PLAN & FOUNDATION FOR TYPE AND FINISH
- (18) DOOR BOTTOM (SEE HARDWARE SCHEDULE)
- (19) (2) 2x4 KING STUD (SEE SHT. 99.0 TABLE 250 FOR NAILING)
- (20) 2x4 TRIMMER (SEE SHT. 99.0 TABLE 250 FOR NAILING)
- (21) "J" MOLD 26 GA
- (22) 1x4 WOOD TRIM W/HD ELEGRO GALV @ 12" O.C.
- (23) 2-2x4 SILL PLATE W/HD @ 16" O.C.
- (24) INSULATION (SEE SPECS FOR SIZE AND TYP)
- (25) FINISH FLOORING (SEE FINISH SCHEDULE SHT. AS 0)
- (26) 2x4 JAMB STUDS (SEE SHT. 99.0 DETAILS FOR NUMBER OF STUDS REQUIRED AND TABLE 250 FOR NAILING)
- (27) WINDOW GLAZING (SEE WINDOW SCHEDULE SHEET AS 0)
- (28) AIR CONDITION UNIT BOTTOM SEAT 17.1/2" x 24" x 1 1/2" W/6" x 2" LAG W/LTS.
- (29) ALUMINUM WINDOW FRAME WITH NAIL-ON FINISH. INSTALL W/IN 5' BLDG. PAPER STAIN, FIN. AND FRAMING. INSTALL WITH 6d @ MAX 24" O.C.
- (30) 16d BOX STAGGERED @ MAX 24" O.C.
- (31) HEADER (SEE SHT. 99.1 WALL FRAMING DETAILS)
- (32) DOOR (SEE DOOR SCHED)
- (33) SEE SHEET 99.1 FOR TYPICAL WALL FRAMING NAILING
- (34) ATTACHMENT BRACKET (SEE MFG. NOTE LEAVE OR LIFT MFG. STD.)
- (35) HVAC UNIT (SEE SHEET M-1)
- (36) 2-2x4 FULL HT STUDS



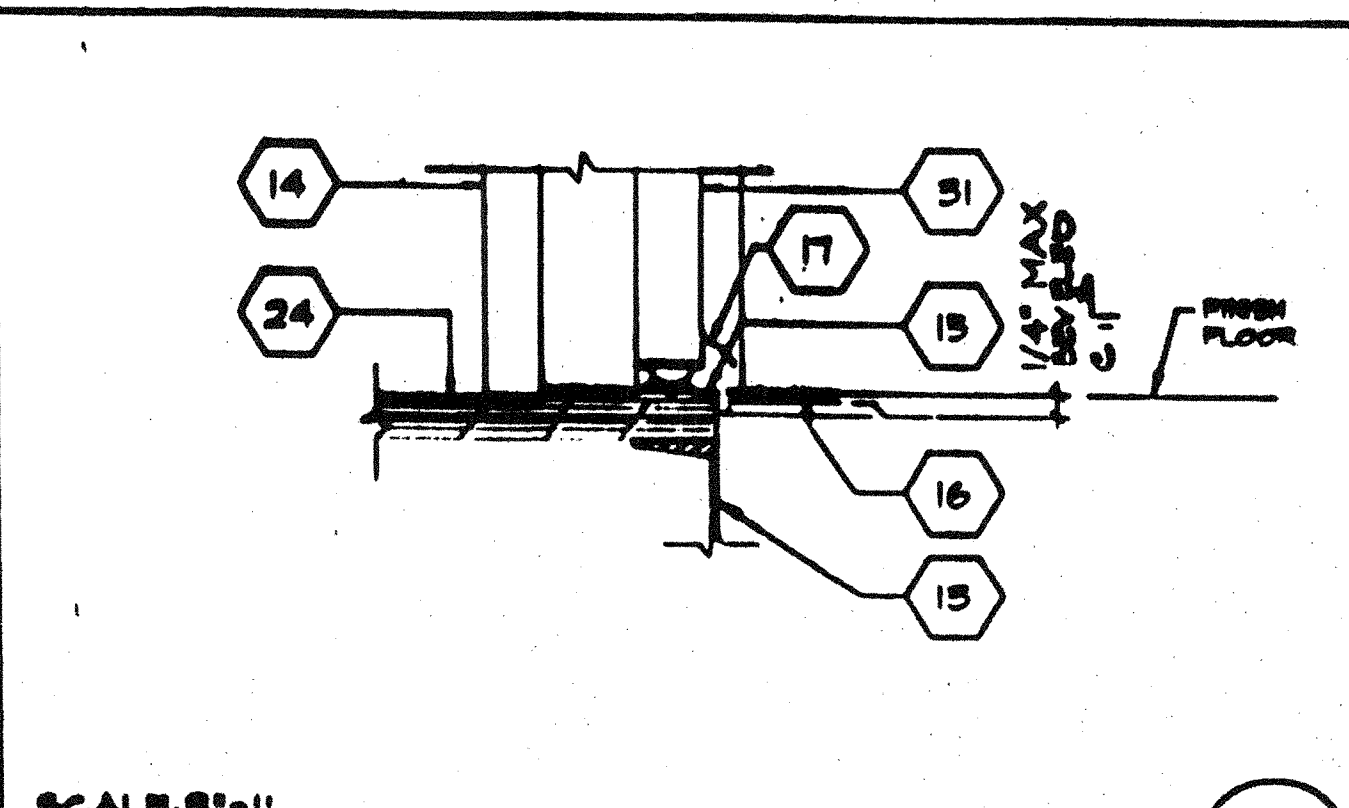
SCALE: 5"=1'
EXTERIOR DOOR JAMB @ CORNER (9)



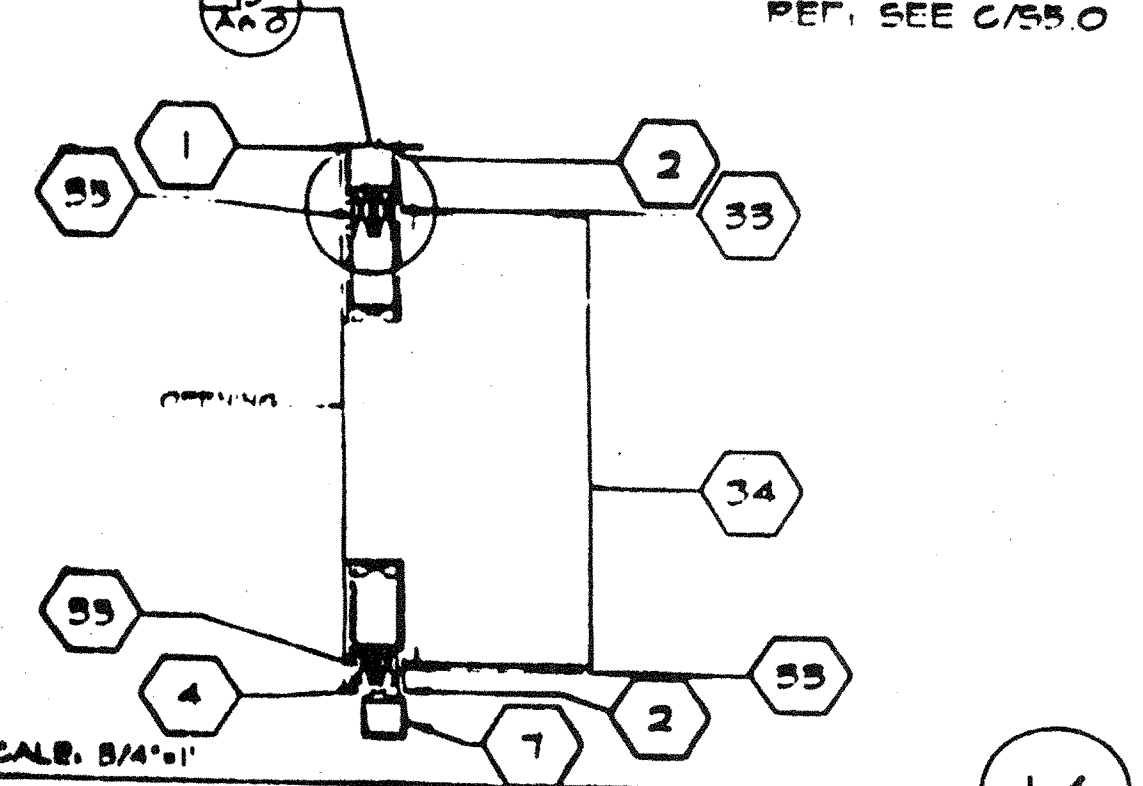
SCALE: 5"=1'
COLUMN @ MODLINE (5)



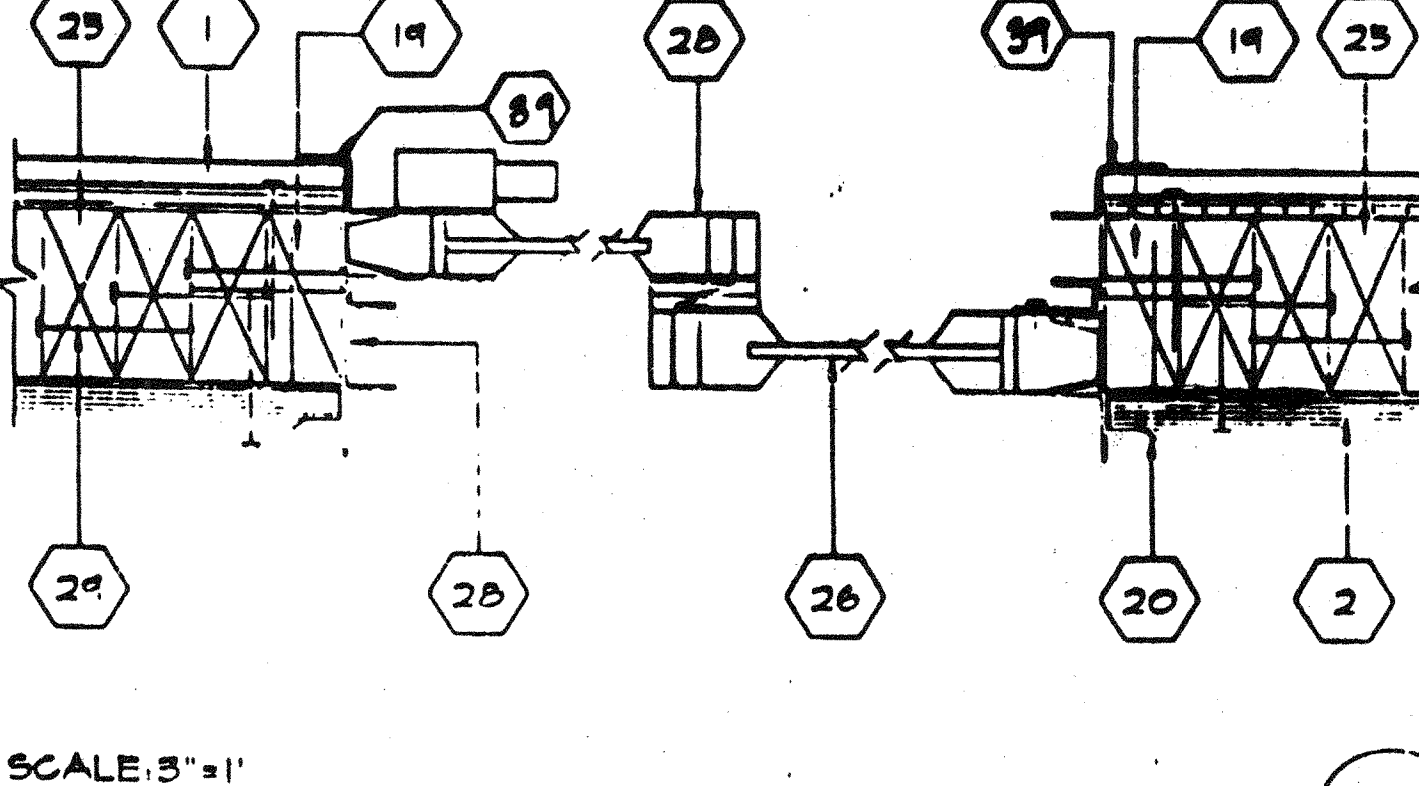
SCALE: 5"=1'
THRESHOLD (1)



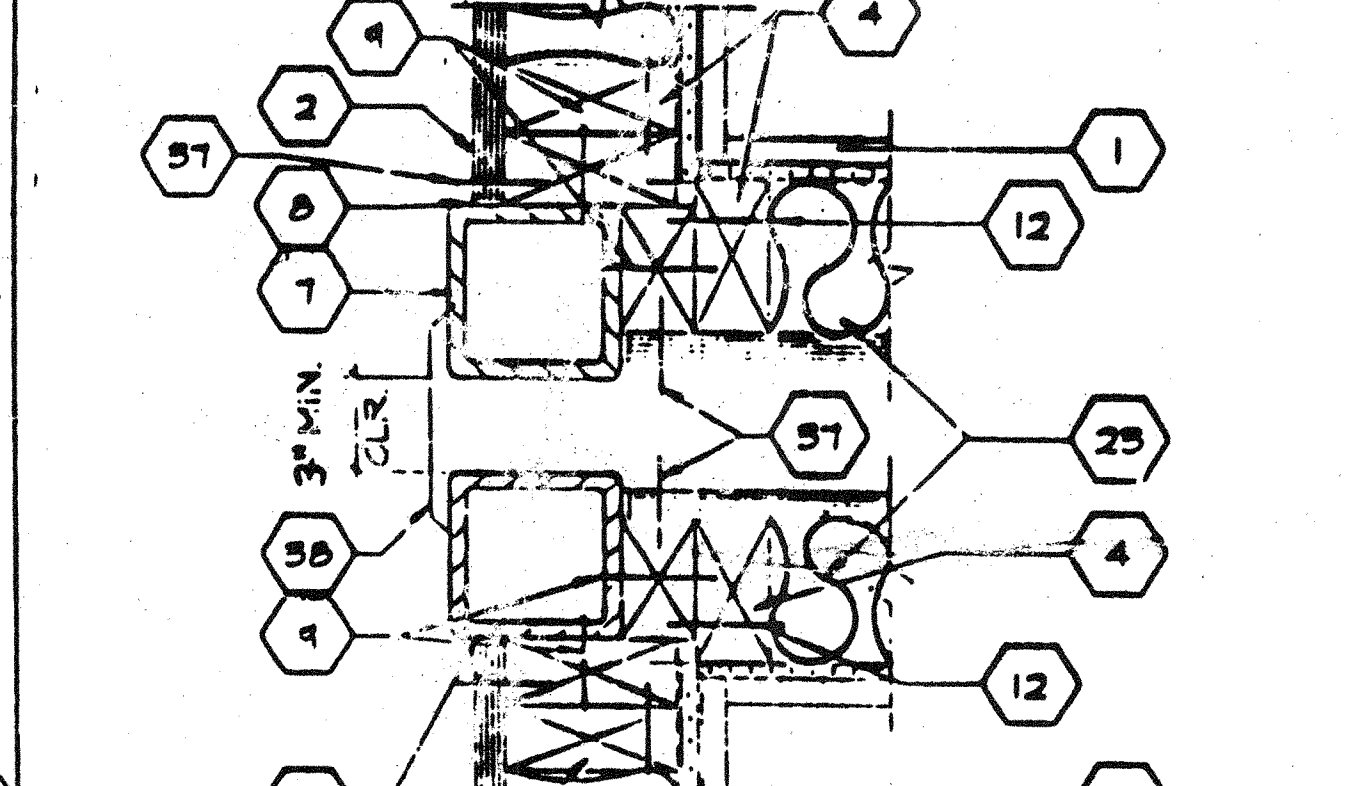
SCALE: 5"=1'
INTERIOR DOOR JAMBS (2)



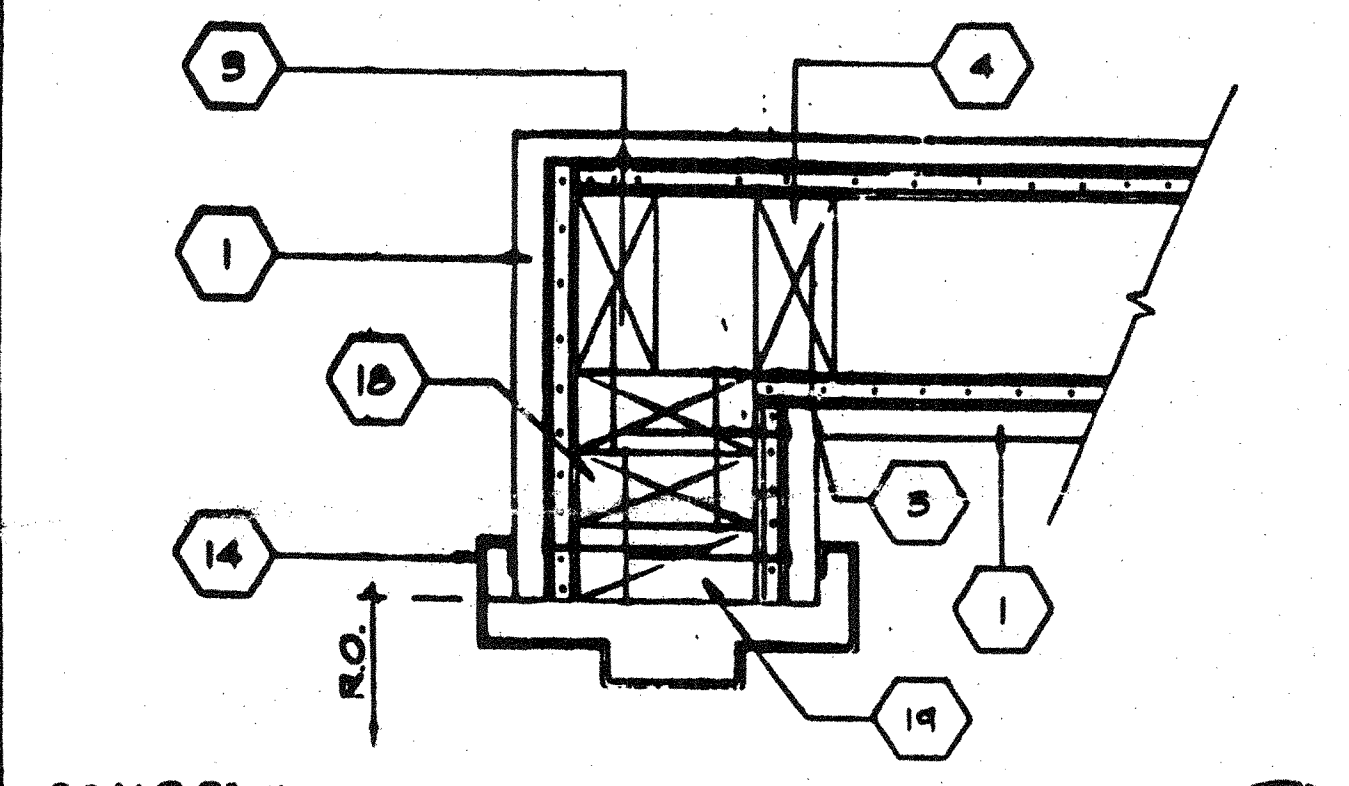
SCALE: 5/4"=1'
A.C. UNIT (14)



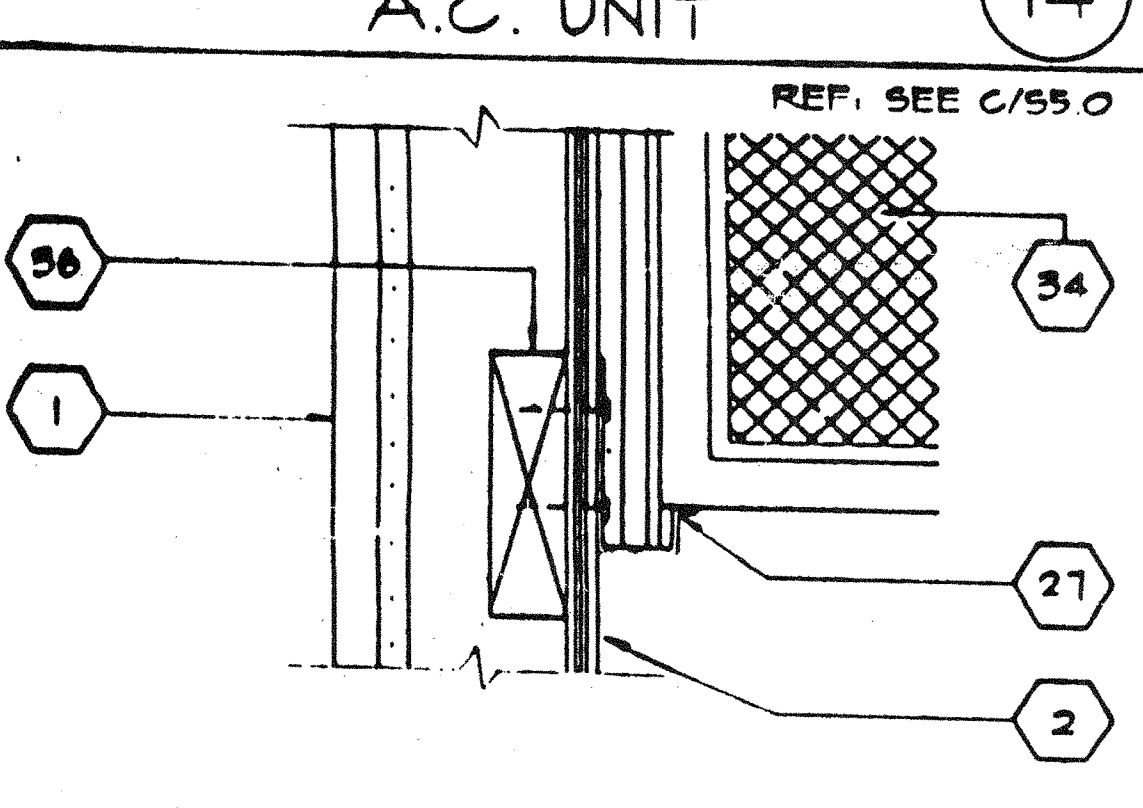
SCALE: 5"=1'
WINDOWS SECTION @ JAMBS (10)



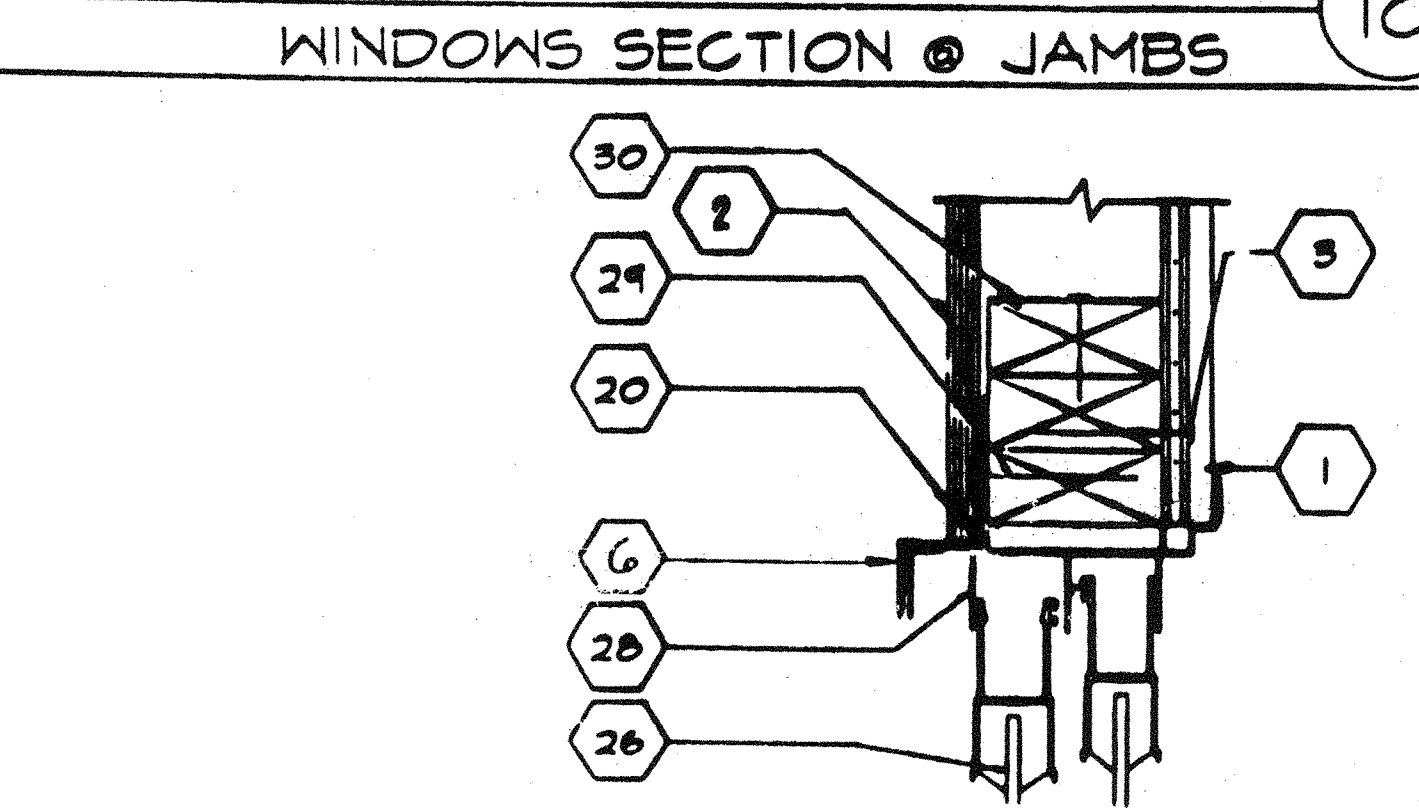
SCALE: 5"=1'
CLOSURE BETWEEN BLDGS (6)



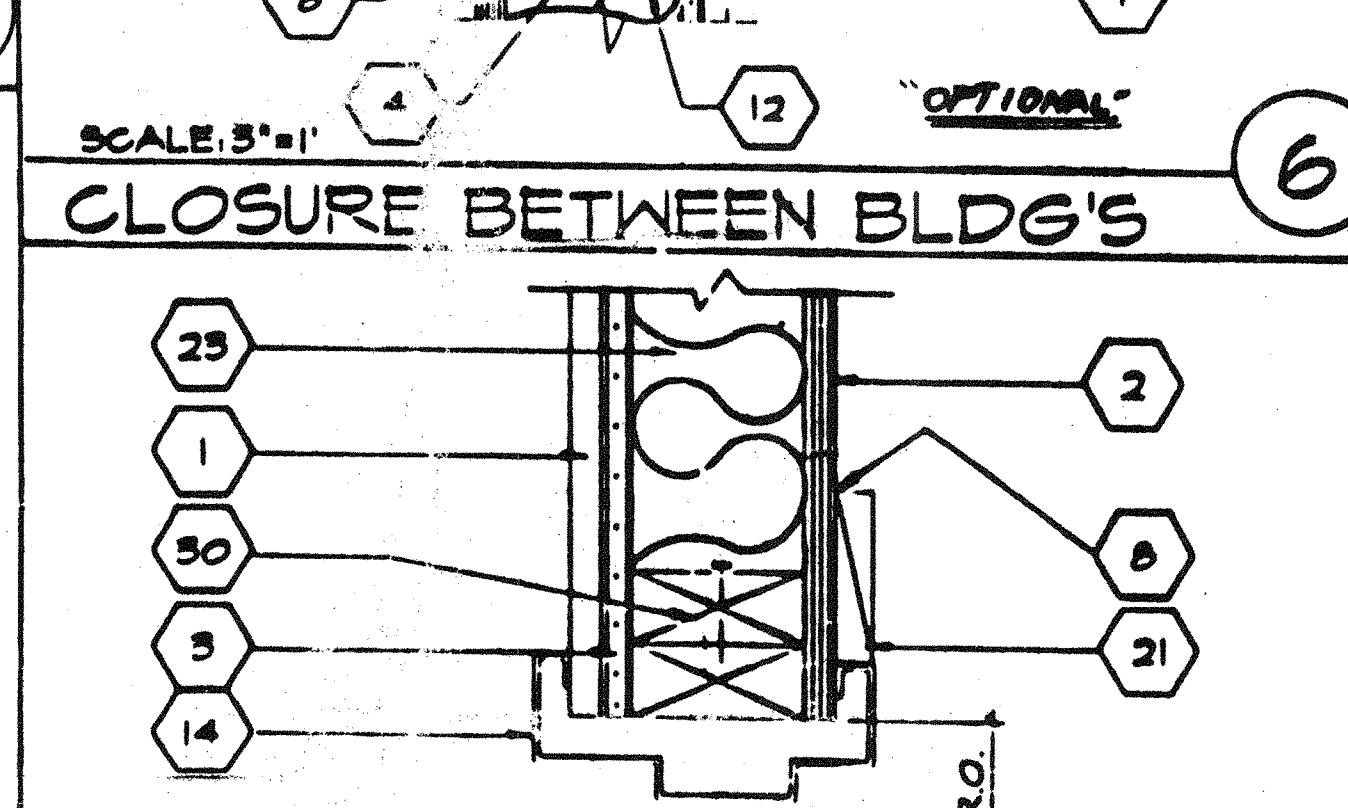
SCALE: 5"=1'
INTERIOR DOOR JAMBS (3)



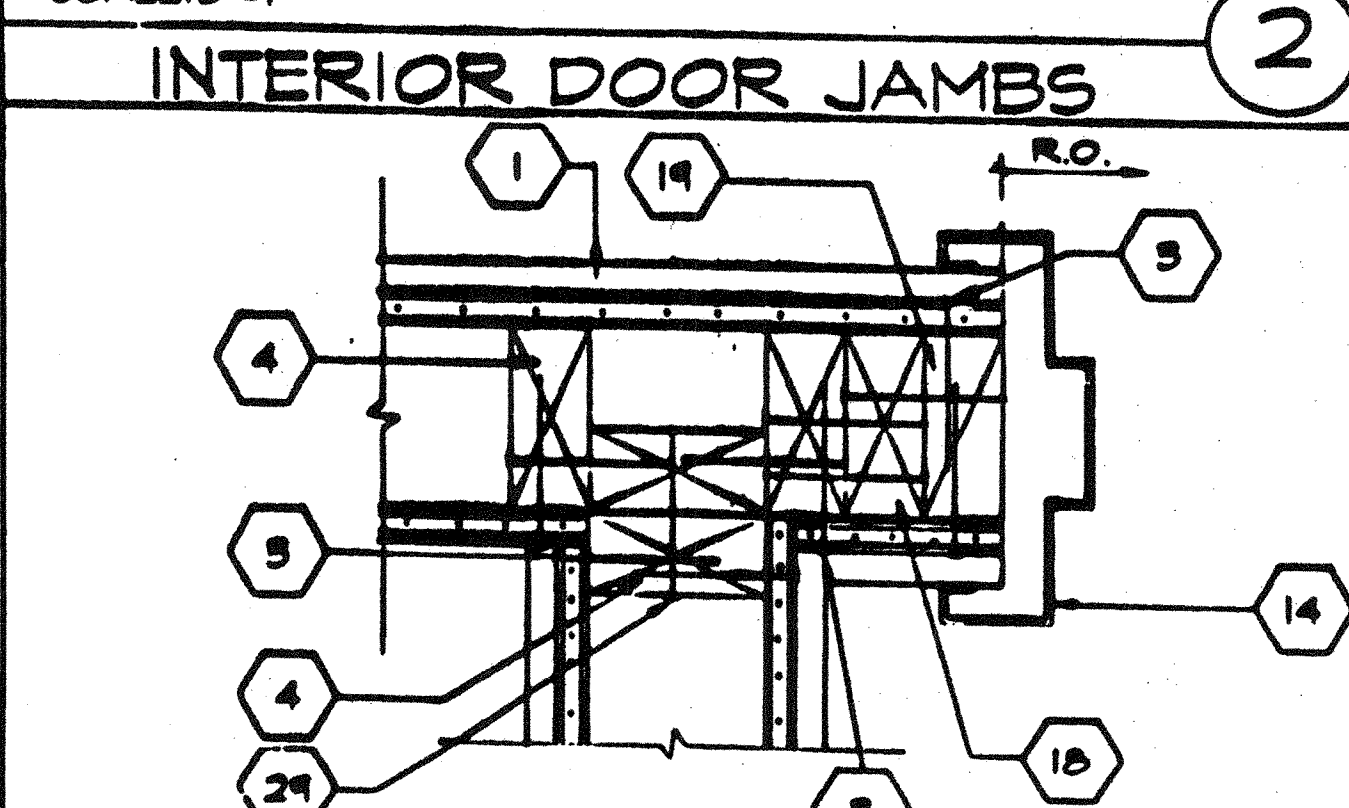
SCALE: 5"=1'
A.C. UNIT - BOTTOM (15)



SCALE: 1-1/2"=1'
WINDOW HEADER (11)

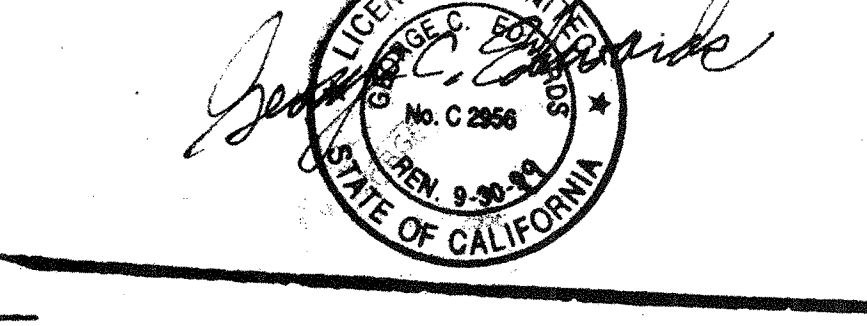


SCALE: 5"=1'
EXTERIOR DOOR HEADER (7)



SCALE: 5"=1'
INTERIOR DOOR JAMBS (3)

ARCHITECT	ELECTRICAL	STRUCTURAL	MECHANICAL	FIRE MARSHAL	ACCESS COMPLIANCE	STRUCTURAL SAFETY
-----------	------------	------------	------------	--------------	-------------------	-------------------



© MODTECH INC. 1994
 2926 4012-084
 DATE 2067 2926
 DATE



STKP-39
 TYPICAL DETAILS
 A6.0