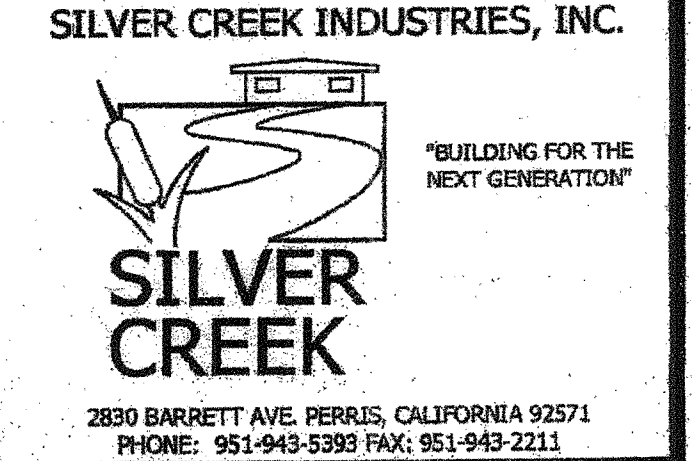


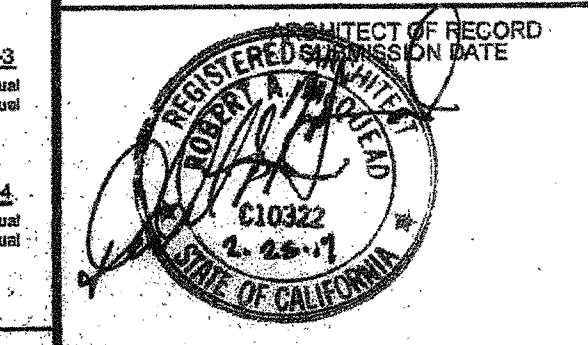
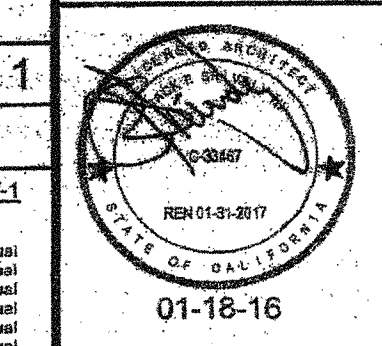
THESE DRAWINGS AND ALL MATERIAL CONTAINED HEREIN ARE THE PROPERTY OF SILVERCREEK INDUSTRIES, INC. (SCI) AND SHALL NOT BE REPRODUCED, COPIED OR OTHERWISE DISPOSED OF DIRECTLY OR INDIRECTLY AND SHALL NOT BE USED IN WHOLE OR IN PART TO ASSIST IN THE MAKING OF OR FOR THE PURPOSE OF FURNISHING ANY INFORMATION FOR THE MAKING OF DRAWINGS, PRINTS, APPARATUS OR PARTS THEREOF WITHOUT THE FULL KNOWLEDGE AND WRITTEN CONSENT OF SCI INC. ALL PATENTABLE MATERIAL CONTAINED HEREIN AND ORIGINATING WITH SCI INC SHALL BE THE PROPERTY OF SCI INC



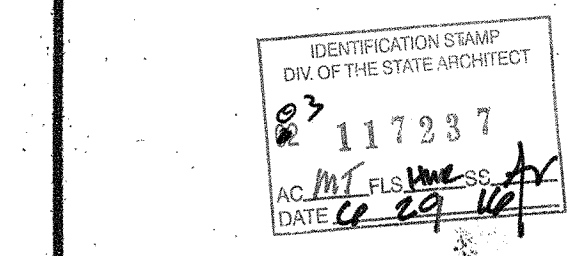
2830 BARRETT AVE. PERRIS, CALIFORNIA 92571
PHONE: 951-943-5393 FAX: 951-943-2211

PROJECT NAME:
CLASS LEASING STOCKPILE #140 WAYSIDE E.S.

SHEET TITLE:
SERIAL No.: 10789 - 91



PROJECT SPECIFIC STATE AGENCY APPROVAL
APPROVED
DIVISION OF THE STATE ARCHITECT
AC SL JB SS CN
A 604 114277 DATE 1.26.16

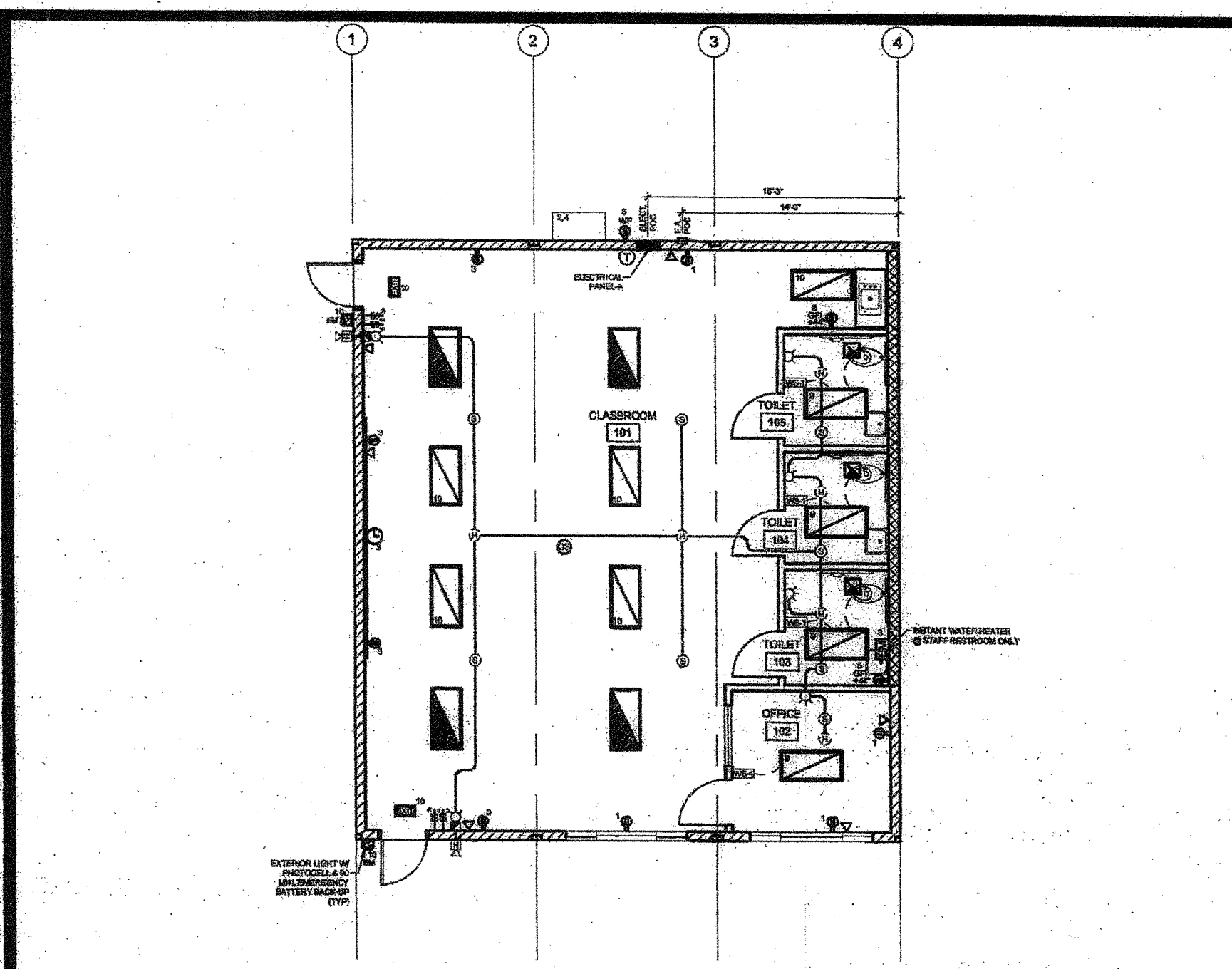


REVISIONS

▲	REVISED RAMP LENGTH TO MATCH SITE SPECIFIC
▲	
▲	
▲	

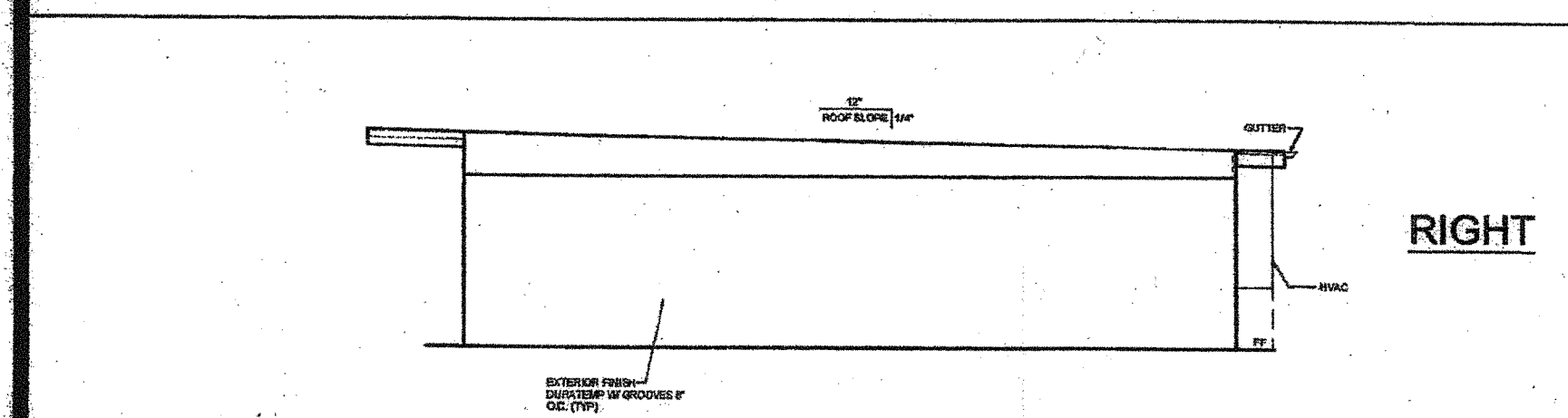
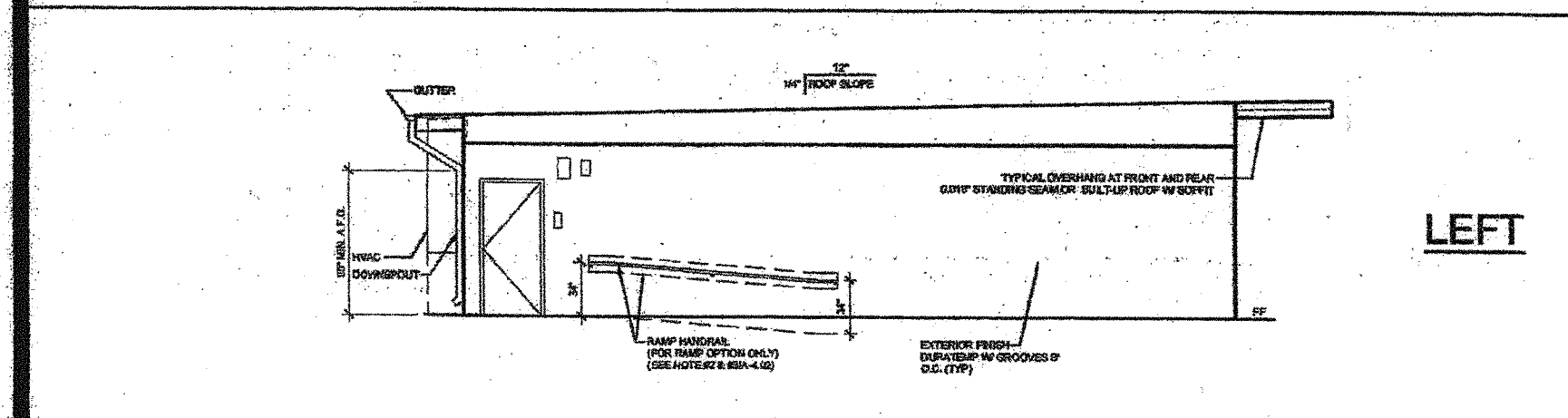
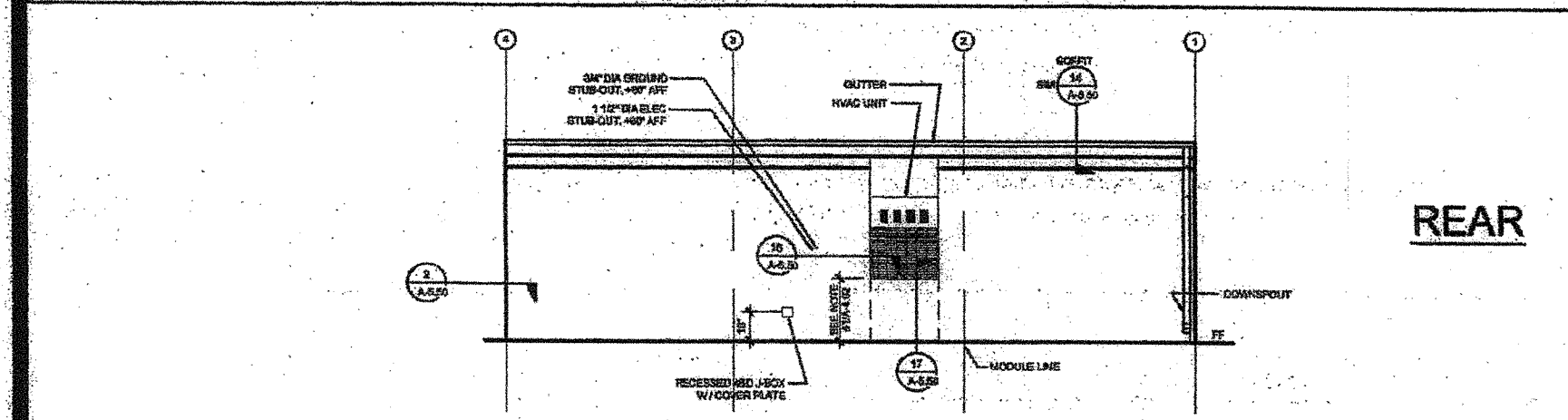
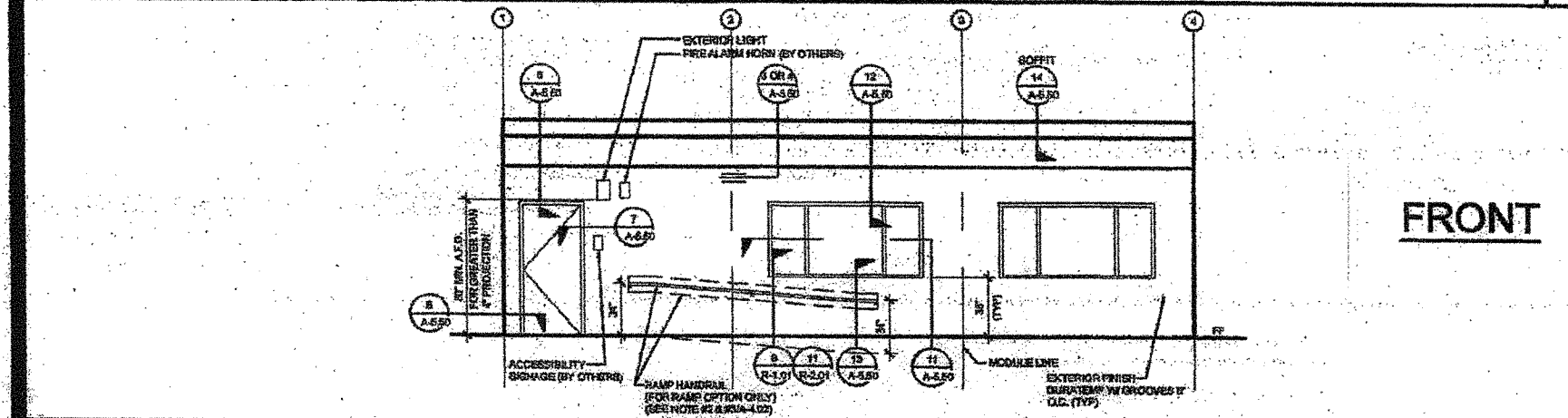
SILVER CREEK INDUSTRIES

PROJECT NO:
DRAWN BY:
SCALE: AS NOTED
DATE: 12.15.2015
SHEET NUMBER
CCD.1

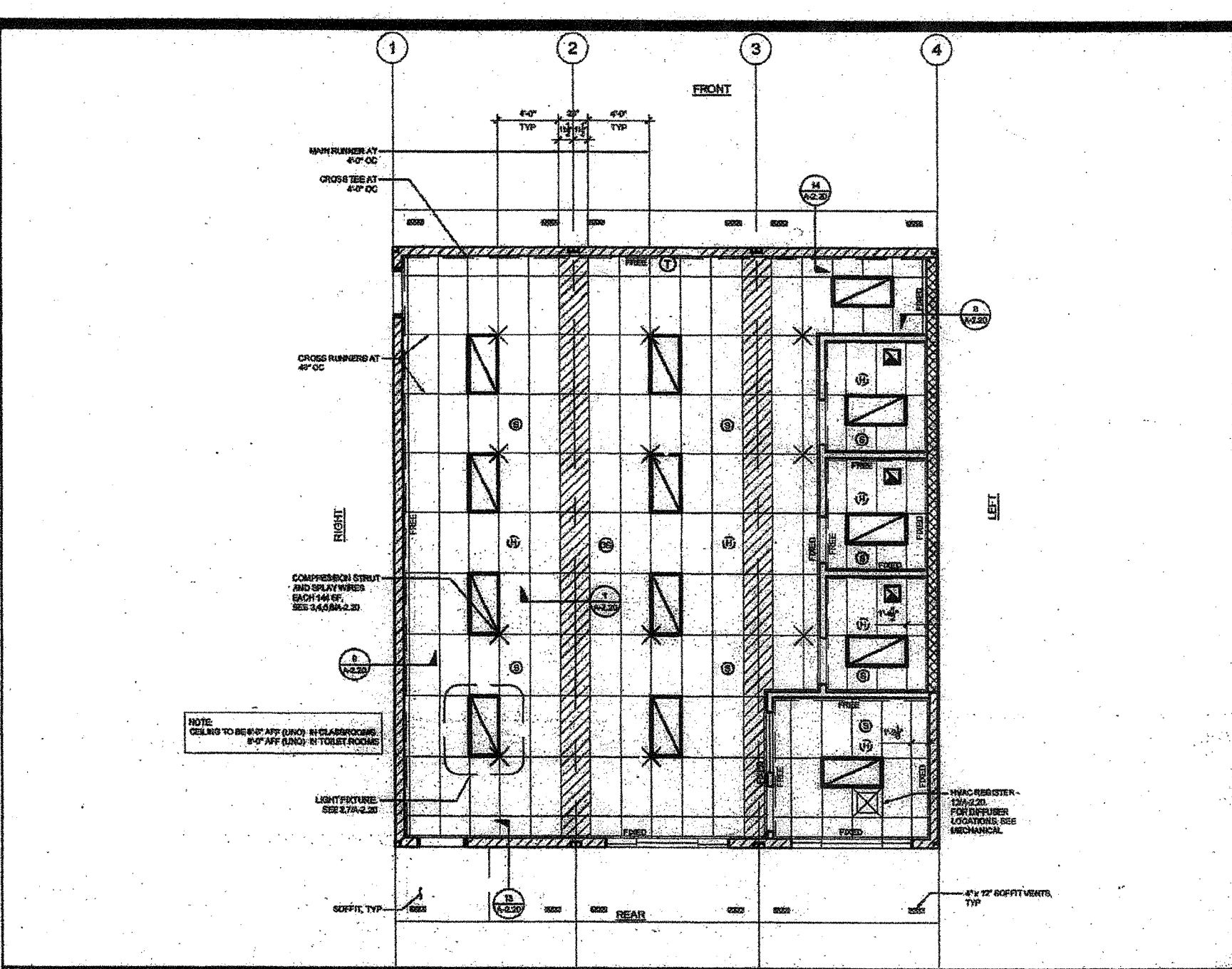


PANEL A	PHASE	VOLTS	BUSSES	MAIN	LOCATION	FEED	MOUNTING
DESCRIPTION	WAT. NO.	SIZE	WATTS	WIRE	NO. WAT.	NO. WAT.	OBJECT
RECEPTS	188	5	200	20 1 #12 3	4	200	STONING HW
RECEPTS	188	2	360	20 1 #12 5	4	360	RECEPTS
LIGHTS - EF	95	7	872	20 1 #12 2	4	3000	WATERHEATER
LEG TOTALS		1772	3,900				
L.O.L. = 3FT3-1.8896-21255							
TOTAL WATTS=21255							
LEG BALANCE = 5.4%							
TOTAL AMPS BR.58							

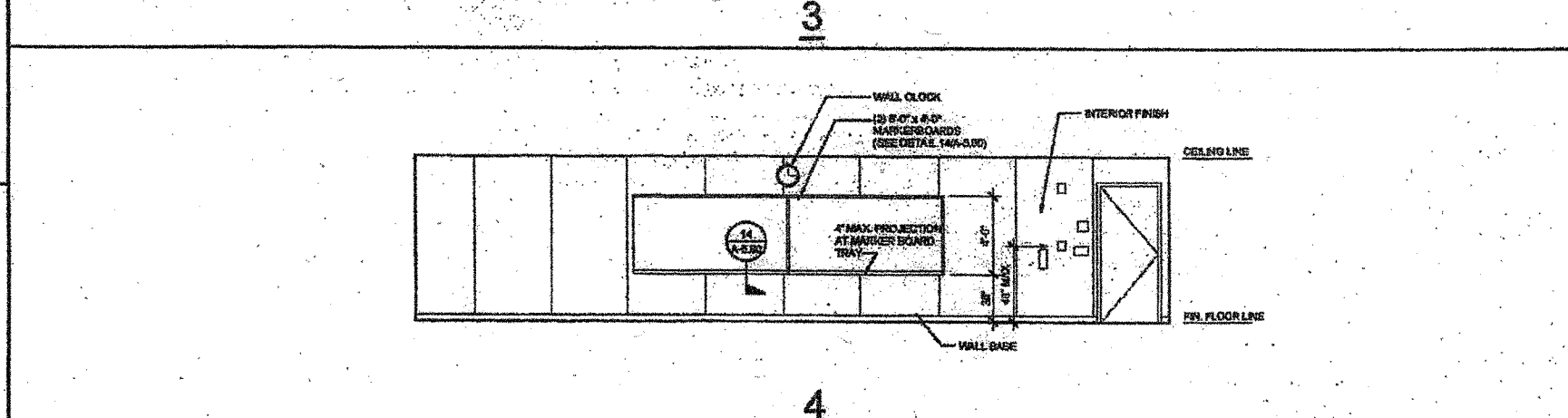
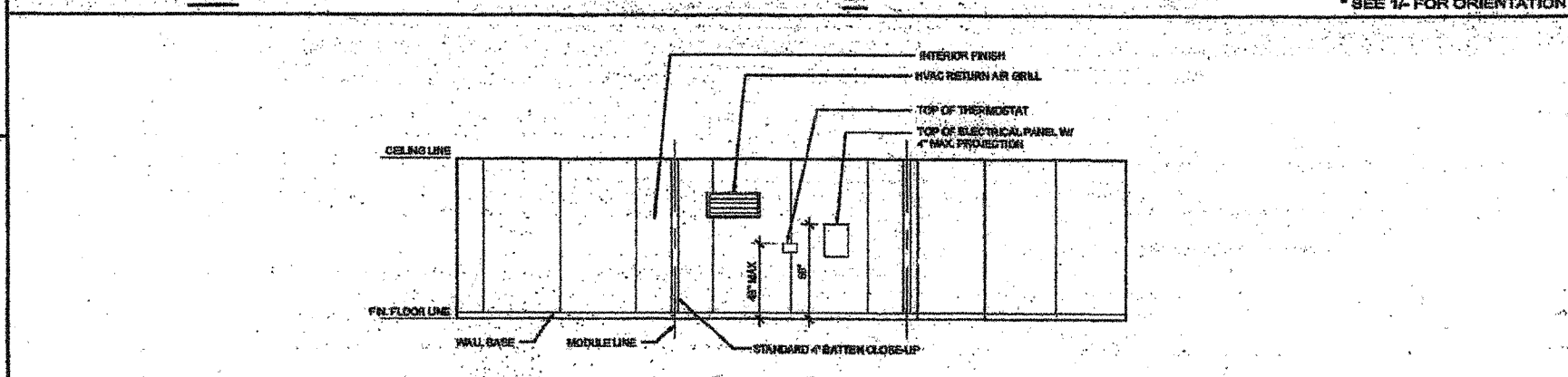
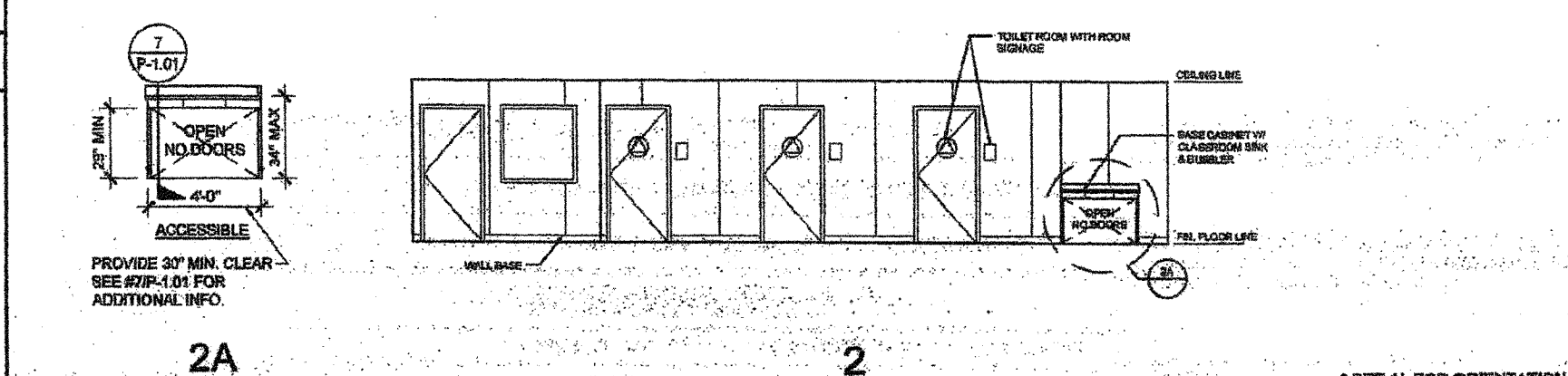
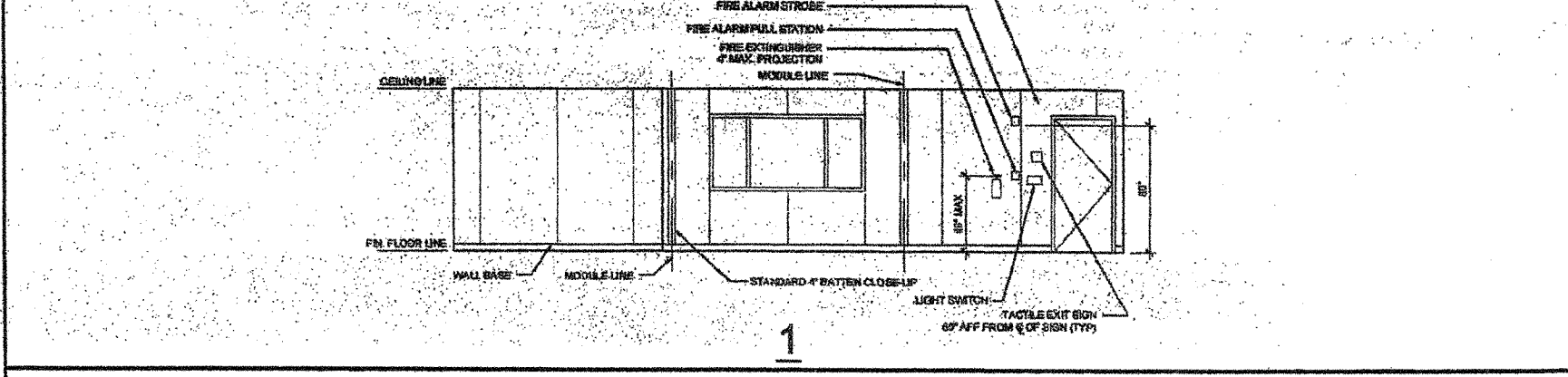
REF.: STOCKPILE #140 } SHEET E-1.02 ELECTRICAL PLAN SCALE: 1/8" = 1'-0" 7



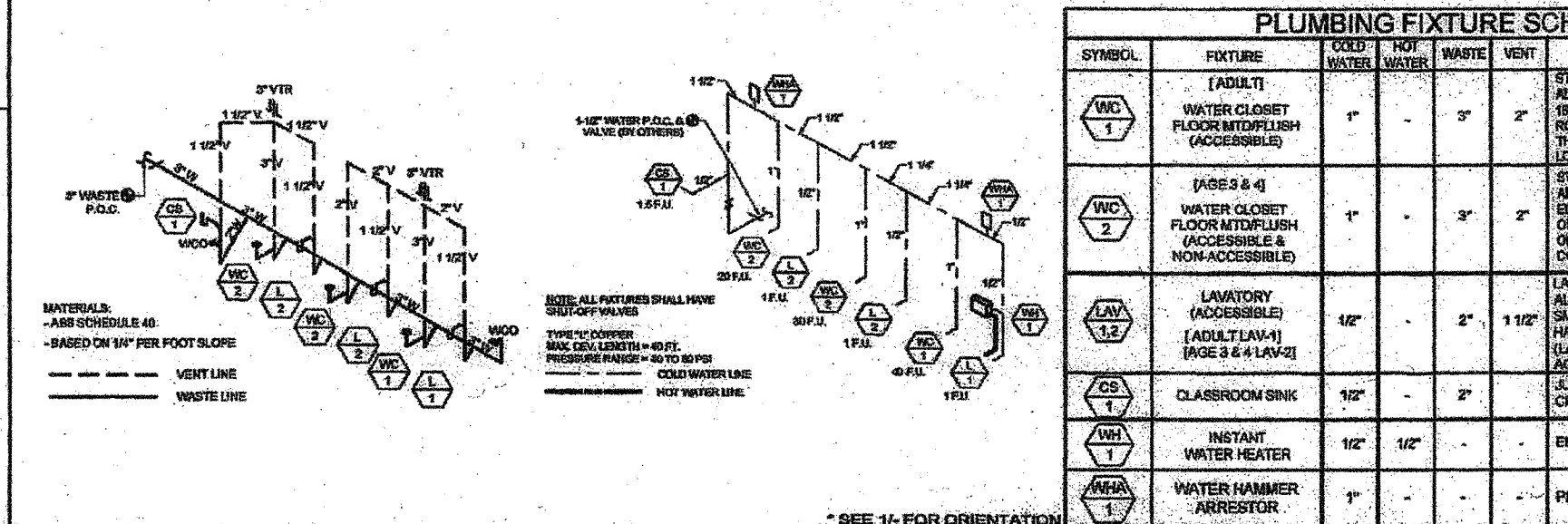
REF.: STOCKPILE #140 } SHEET A-0.2 EXTERIOR ELEVATIONS SCALE: 1/8" = 1'-0" 8



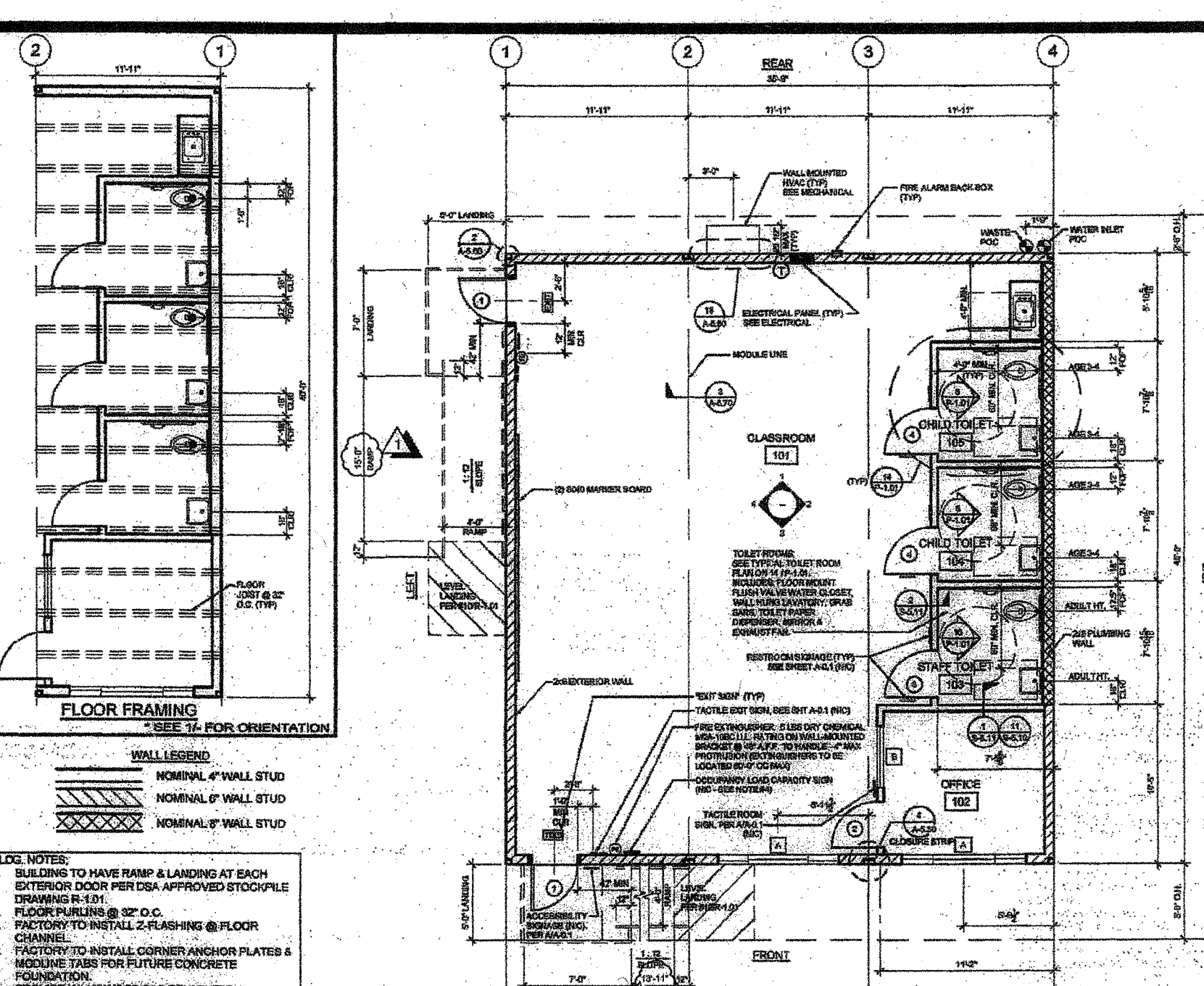
REF.: STOCKPILE #140 } SHEET A-0.2 REFLECTED CEILING PLAN SCALE: 1/8" = 1'-0" 4



REF.: STOCKPILE #140 } SHEET A-0.2 INTERIOR ELEVATIONS SCALE: 1/8" = 1'-0" 5



REF.: STOCKPILE #140 } SHEET P-1.01 PLUMBING PLAN SCALE: N.T.S. 6



REF.: STOCKPILE #140 } SHEET A-1.02 FLOOR PLAN SCALE: 1/8" = 1'-0" 1

DOOR SCHEDULE

DOOR NO.	WIDTH	HT	DOOR TYPE	FRAME	HW SET	NOTES
1	3'-0"	7'-0"	A	HM	KD	HW - 1 THRESHOLD SEE #4/A-5.70
2	3'-0"	7'-0"	A	SCL	KD	HW - 2
3	3'-0"	7'-0"	A	SCL	KD	HW - 3 UNDER CUT DOOR 1"
4	3'-0"	7'-0"	A	SCL	KD	HW - 4 UNDER CUT DOOR 1"

DOOR HARDWARE

CLASSROOM - PANIC HARDWARE	EXTERIOR DOOR HW-1
EXIT DEVICE HABER 88119 4 1/2" x 4 1/2" 1/2" HP	Finish 626 or equal
BUITS HABER 88119 4 1/2" x 4 1/2" 1/2" HP	Finish 626 or equal
CLOSURE HABER 88119 4 1/2" x 4 1/2" 1/2" HP	Finish 626 or equal
WEATHER STRIP HABER 88119 4 1/2" x 4 1/2" 1/2" HP	Finish 626 or equal
DOOR BOTTOM HABER 88119 4 1/2" x 4 1/2" 1/2" HP	Finish 626 or equal

WINDOW SCHEDULE

WINDOW NO.	TYPE	WIDTH	HT.	FUNCT.	FRM. MAT.	GLS. MAT.	NOTES
A	1	8'-0"	4'-0"	XOX	ANOD	DP	SILL DETAIL SEE #13/A-5.50
B	2	4'-0"	4'-0"	FIXED	ANOD	CLEAR	TEMPERED

INTERIOR DOOR HW-2

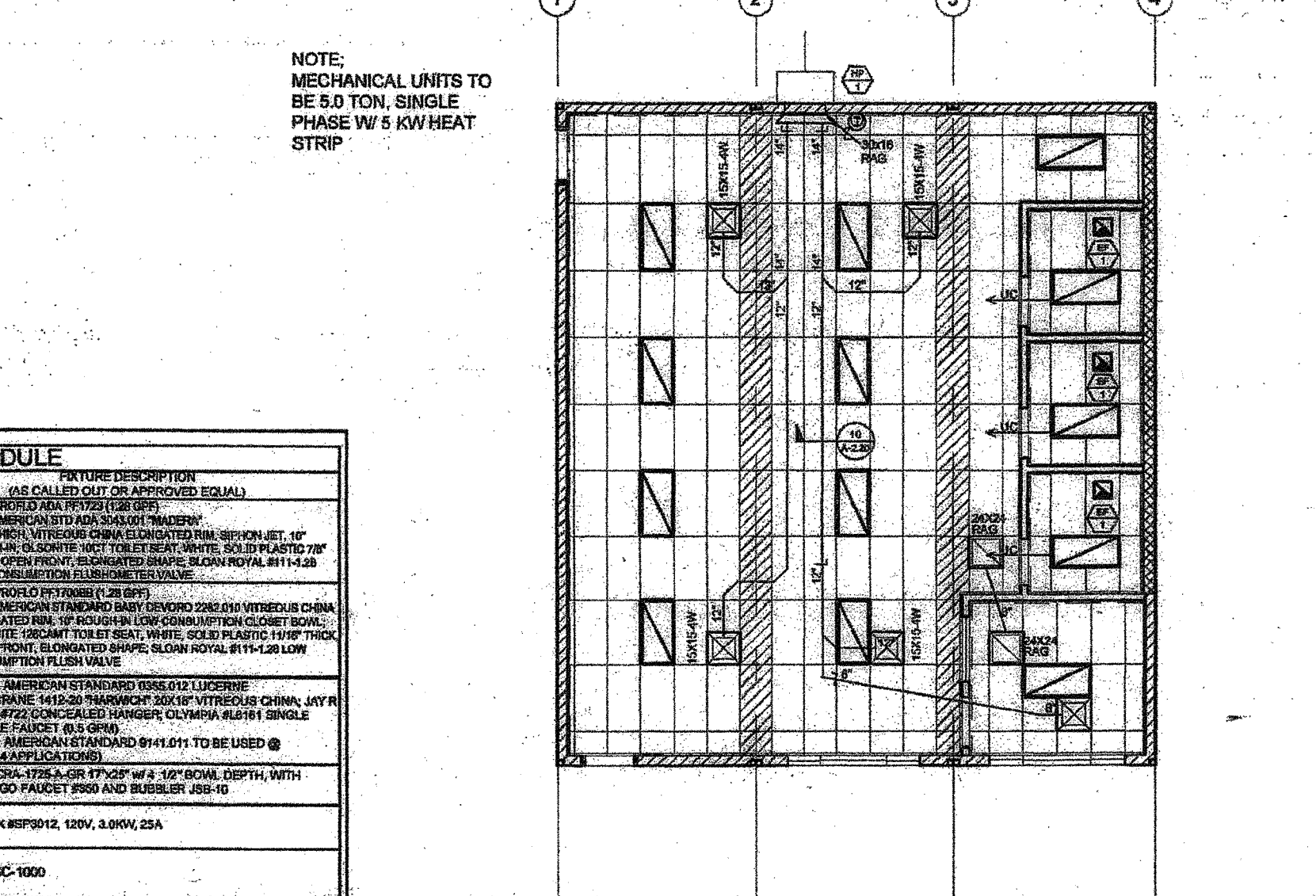
LOCKSET	HW-2	HW-3	HW-4
SCHLAGE N6500 RND 2-3/4 ASA (ENTRANCE/OFFICE LOCK)	Finish 626 or equal	SCHLAGE N6500 RND 2-3/4 ASA (PASSAGE)	Finish 626 or equal
BUITS	Finish 626 or equal	BUITS	Finish 626 or equal

FINISH SCHEDULE

ROOM NAME	FLOORING	WALL FINISH	CEILING	HT			
CLASSROOM [101]	N.I.C.	N.I.C.	TACK	TACK	TACK	CP	8'-6"
OFFICE [102]	N.I.C.	N.I.C.	TACK	TACK	TACK	CP	8'-6"
STAFF TOILET [103]	SV	SC	FRP	FRP	FRP	CP	8'-0"
CHILD TOILET [104]	SV	SC	FRP	FRP	FRP	CP	8'-0"
CHILD TOILET [105]	SV	SC	FRP	FRP	FRP	CP	8'-0"

MECHANICAL PLAN (Sheet M-1.02)

REF.: STOCKPILE #140 } SHEET A-0.2 SCHEDULES SCALE: 1/8" = 1'-0" 2



REF.: STOCKPILE #140 } SHEET M-1.02 MECHANICAL PLAN SCALE: 1/8" = 1'-0" 3