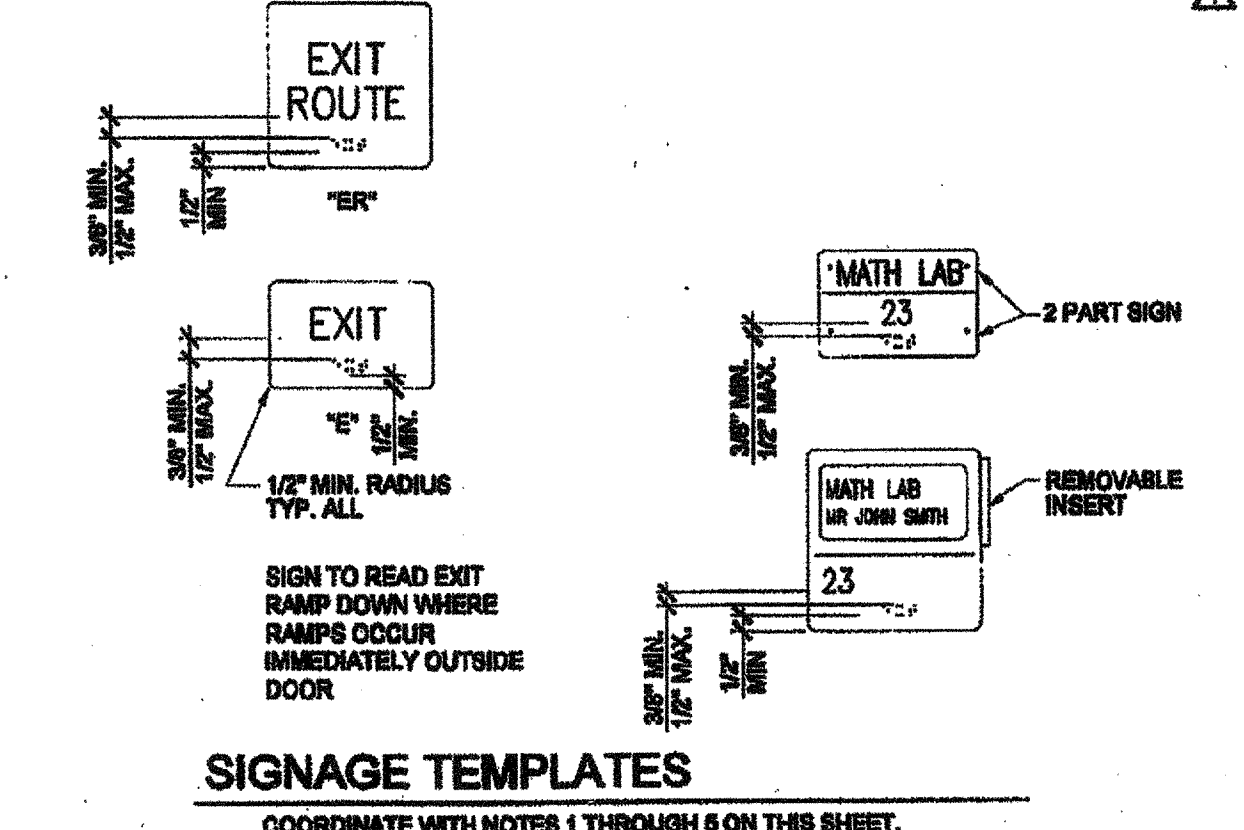
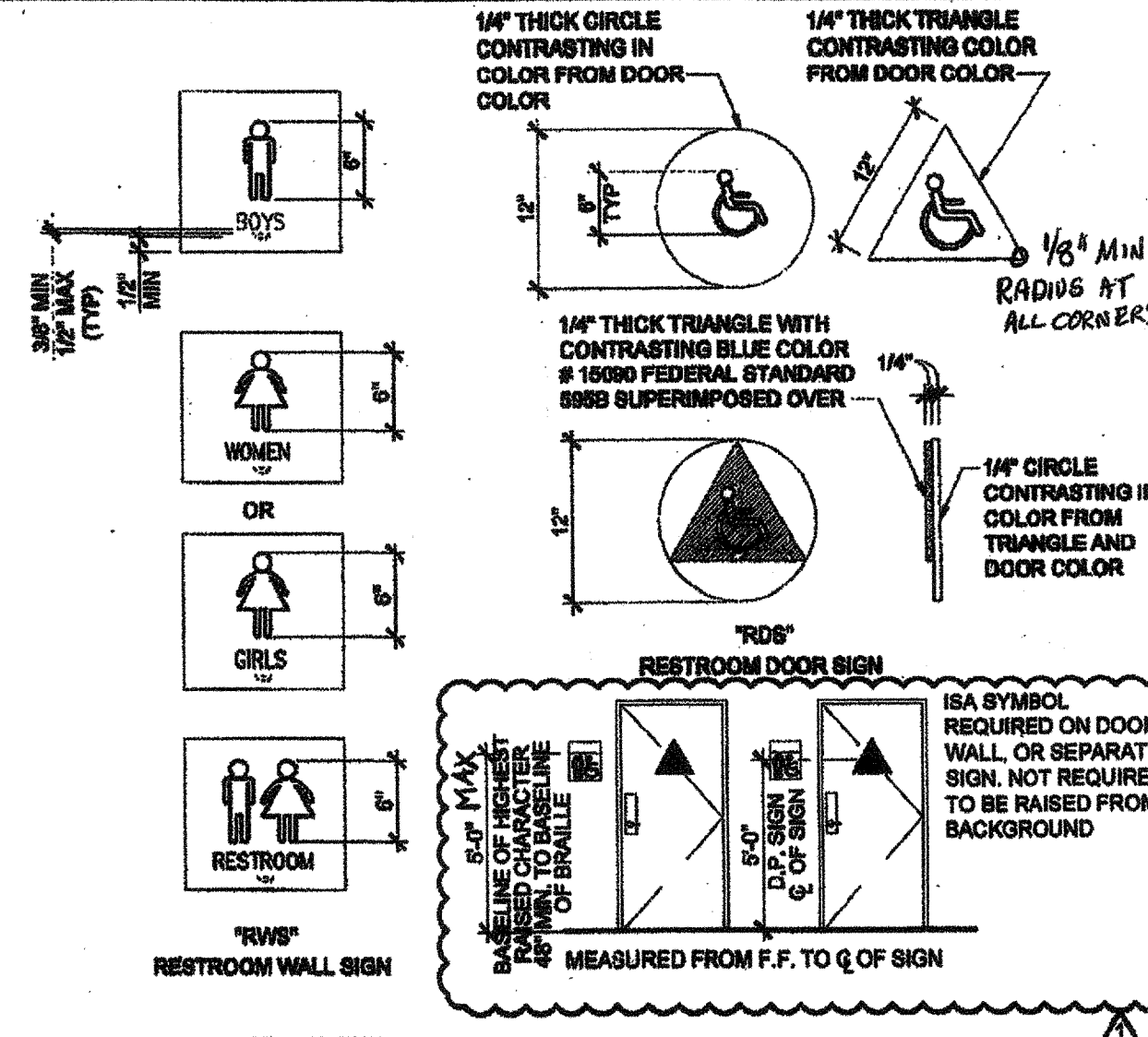


REFLECTED CEILING NOTES

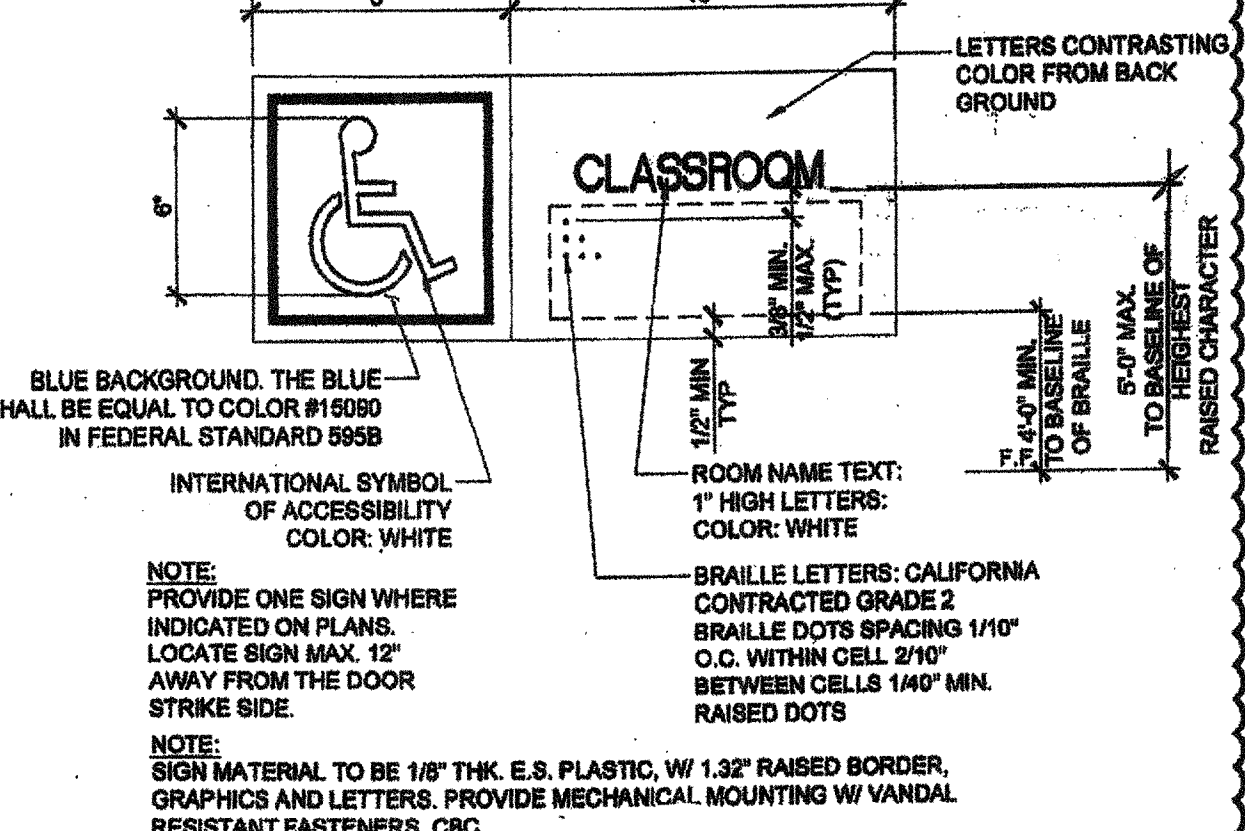
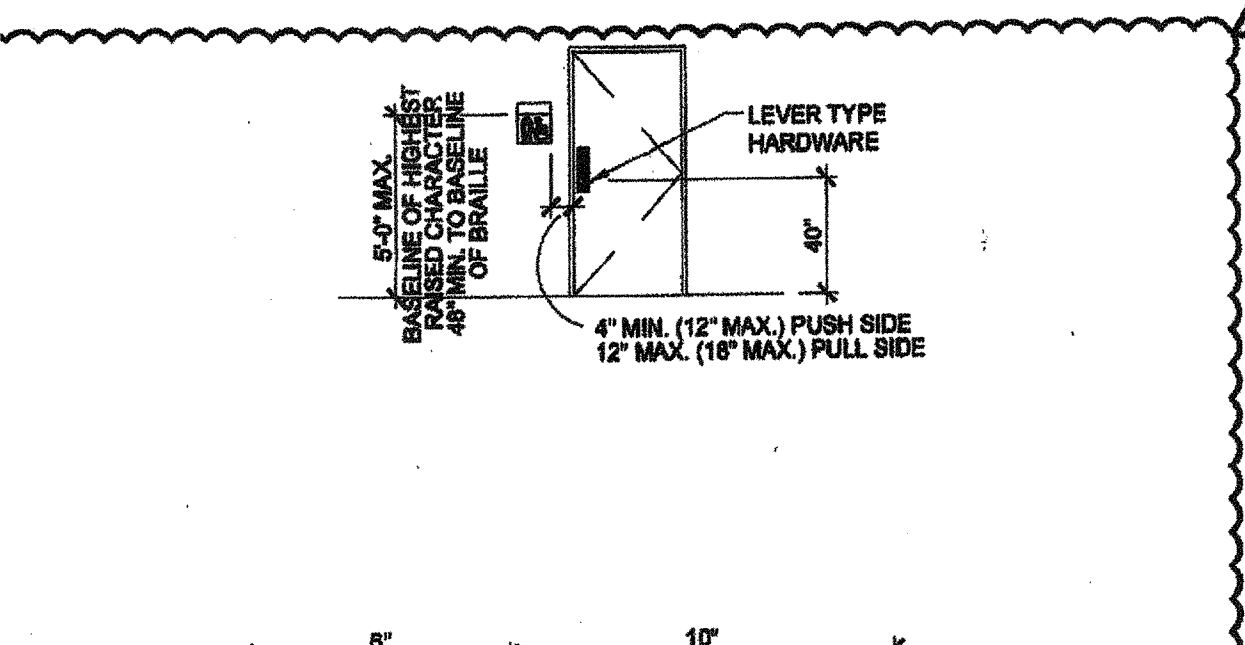
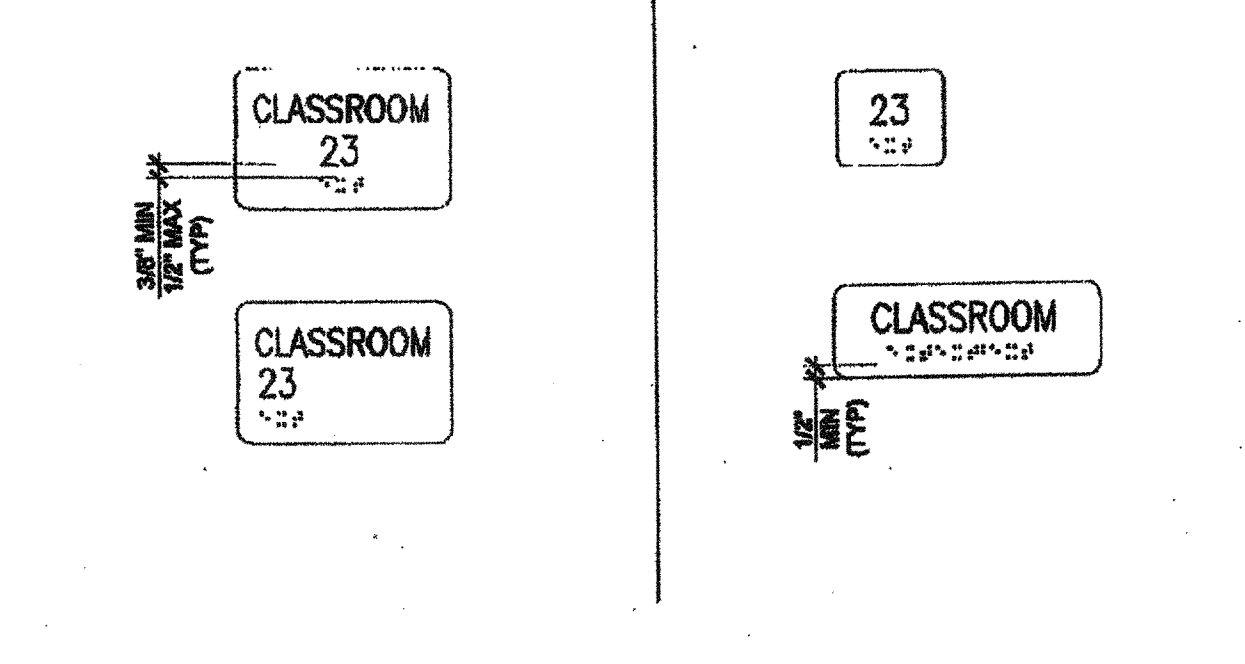
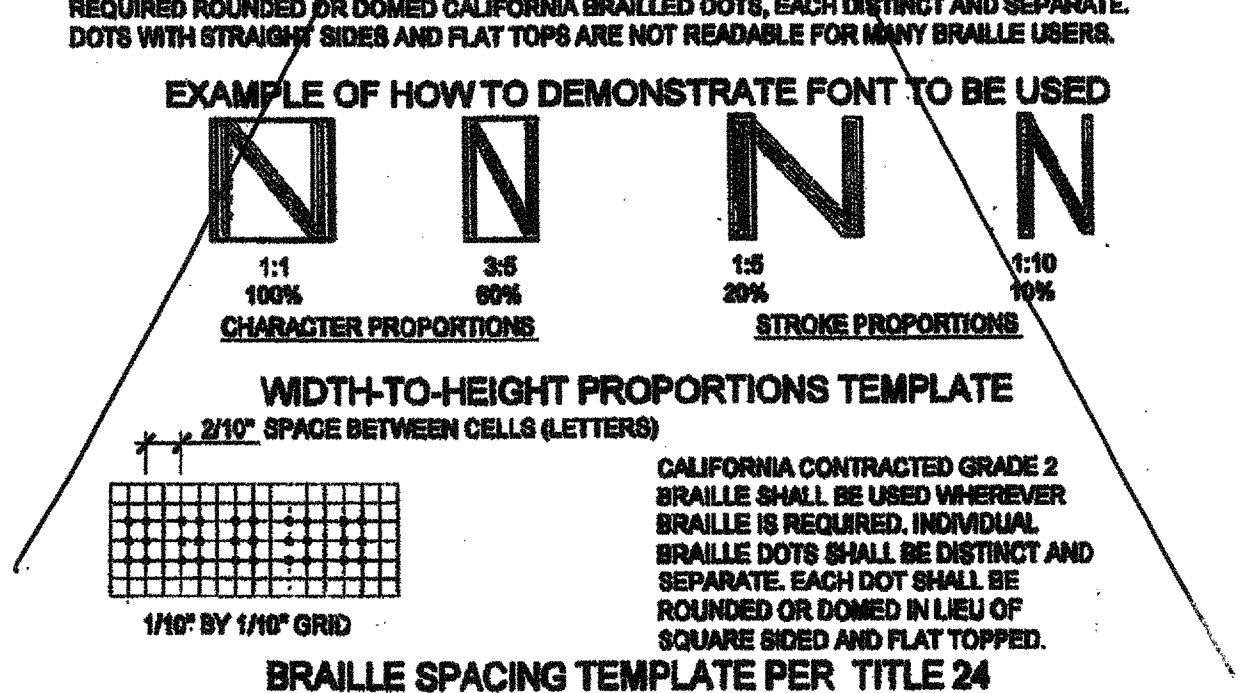
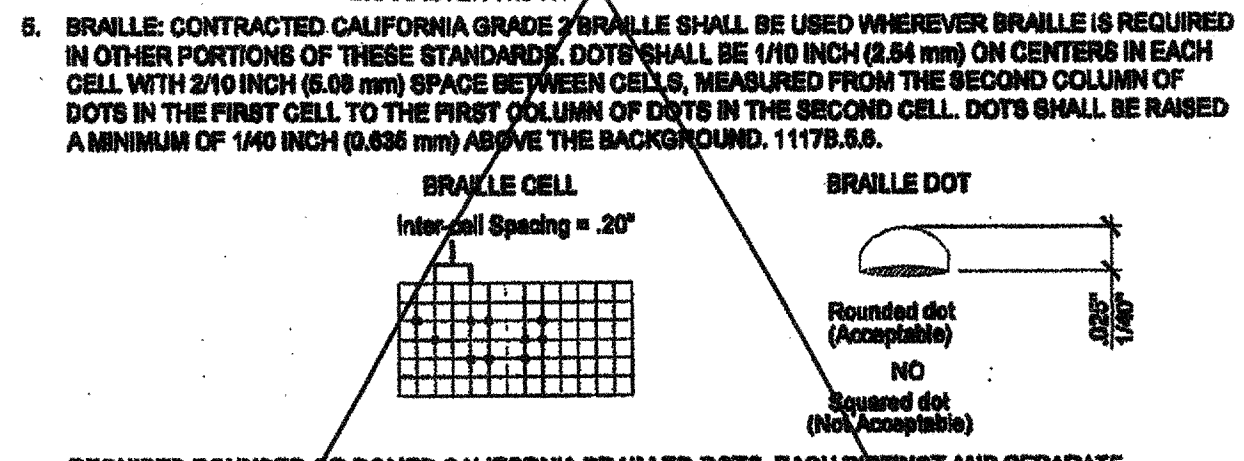
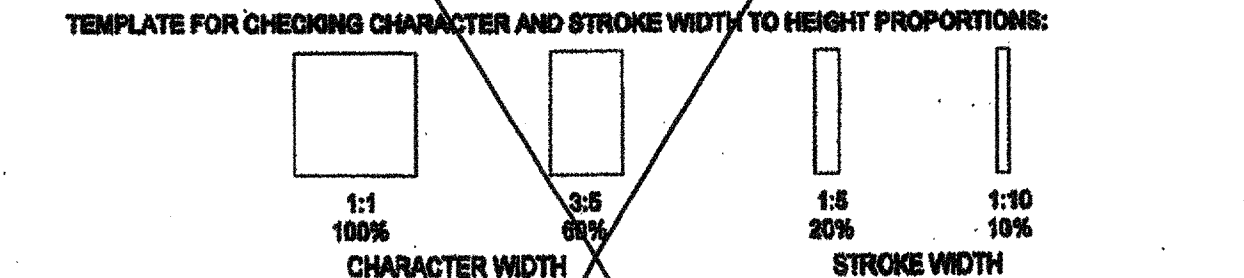
METAL SUSPENSION FOR LAY-IN PANEL CEILING:

- A. 12GA. (MIN.) HANGER WIRES MAY BE USED FOR UP TO THE INCLUDING 4'-0" X 4'-0" GRID SPACING... B. PROVIDE 12GA. HANGER WIRES WITHIN 8" OF THE ENDS OF ALL MAIN CROSS RUNNERS... C. PROVIDE TRAPEZE OR OTHER SUPPLEMENTARY SUPPORT MEMBERS AT OBSTRUCTIONS TO MAINTAIN HANGER SPACING... D. CEILING GRID MEMBERS MAY BE ATTACHED TO NOT MORE THAN 2 ADJACENT WALLS... E. AT THE PERIMETER OF THE CEILING AREA WHERE MAIN OR CROSS RUNNERS ARE NOT CONNECTED TO THE ADJACENT WALL... F. PROVIDE BRACING ASSEMBLY CONSISTING OF A COMPRESSION STRUT... G. FASTEN #12 HANGER WIRES WITH NOT LESS THAN THREE (3) TIGHT TURNS IN 3 INCHES... H. SEPARATE ALL CEILING HANGING AND BRACING WIRES AT LEAST 6" FROM ALL UNBRACED DUCTS, PIPES, CONDUITS, ETC... I. CEILING PANELS SHALL NOT SUPPORT ANY LIGHT FIXTURES, AIR TERMINALS OR DEVICES... J. ALL FLUSH OR RECESSED LIGHT FIXTURES, MECHANICAL TERMINALS, AND FLEXIBLE SPRINKLER HOSE FITTINGS OR OTHER SERVICES WEIGHING 50 LBS. OR MORE MUST BE INDEPENDENTLY SUPPORTED BY NOT LESS THAN FOUR (4) TAUT #12 GAGE WIRES... K. CLASSIFICATION OF CEILING GRID: CLASSIFICATION OF CEILING GRID SHALL BE "HEAVY DUTY"...



TACTILE EXIT SIGNS

- 1. CHARACTER TYPE: CHARACTERS ON SIGNS SHALL BE RAISED 1/32 INCH (0.76 mm) MINIMUM AND SHALL BE BOLD SERIF UPPERCASE CHARACTERS ACCOMPANIED BY CONTRACTED GRADE 2 BRAILLE... 2. CHARACTER SIZE: RAISED CHARACTERS SHALL BE A MINIMUM OF 5/8 INCH (16.5 mm) AND A MAXIMUM OF 2 INCHES (51 mm) HIGH... 3. FINISH AND CONTRAST: CONTRAST BETWEEN CHARACTERS, SYMBOLS AND THEIR BACKGROUND MUST BE 70% MINIMUM AND HAVE A NON-GLARE FINISH... 4. PROPORTIONS: CHARACTERS ON SIGNS SHALL HAVE A WIDTH-TO-HEIGHT RATIO OF BETWEEN 3/5 AND 1:1 AND A STROKE WIDTH-TO-HEIGHT RATIO OF BETWEEN 1/5 AND 1:10... ALL LETTERS MEASURED MUST BE UPPERCASE... AFTER CHOOSING A TYPE STYLE TO TEST, BEGIN BY PRINTING THE LETTERS 'X', 'K', AND 'O' AT 1" HIGH... PLACE THE TEMPLATE 1" SQUARE OVER THE X OR O, WHICHEVER IS NARROWER... IF THE CHARACTER IS NOT WIDER THAN 1" INCH, NOR HIGHER THAN 3/5" RECTANGLE, THE PROPORTIONS ARE CORRECT... USE THE 1/5" RECTANGLE TO DETERMINE IF THE STROKE OF THE I IS TOO THIN, AND THE 1:10 RECTANGLE TO SEE IF IT IS TOO NARROW... IF ALL THE TESTS ARE PASSED, THE TYPE STYLE IS COMPLIANT WITH PROPORTION CODE.



ACCESSIBLE ROOM SIGNAGE (BY DISTRICT)

FOR SITE SPECIFIC LOCATIONS ARCHITECT TO PROVIDE BUILDING / ROOM IDENTIFICATION SIGNS, DETAILS AND LOCATIONS OF SIGNAGE TO BE INDICATED.

SYMBOLS LEGEND

Table with columns for symbol, detail/section, and revision cloud. Includes symbols for grid bubble, exterior elevation, interior elevation, cross section, door type, window type, plumbing fixture, and revision to original drawing.

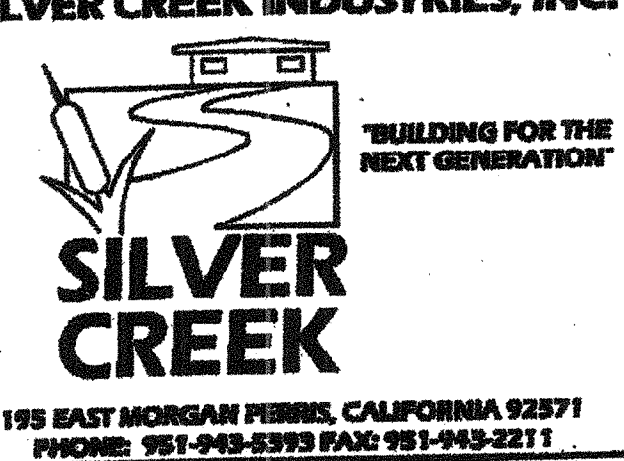
ABBREVIATIONS

Table of abbreviations for construction and architectural terms, including ASB, ARV, ACC, ADDL, ADJ, etc.

SPECIFICATIONS

SECTION 5 - METALS: 0520 RAILINGS AND HANDRAILS: ALL WELDED JOINTS AND SURFACES SHALL BE GRIND SMOOTH... SECTION 6 - DOORS: 0610 DOOR HARDWARE: IF THE DOOR HAS A CLOSER, THEN THE SWEEP PERIOD OF THE CLOSER SHALL BE ADJUSTED... SECTION 7 - FINISHES: 0950 REBUILT FLOORING: REBUILT FLOORING DEMONSTRATING A COEFFICIENT OF FRICTION OF AT LEAST 0.8 PER ASTM D2947... SECTION 8 - SPECIALTIES: 1015 TOILET COMPARTMENTS: TOILET STALLS FOR DISABLED PERSONS SHALL HAVE OPERATING DEVICES LOCATED ON BOTH SIDES OF THE DOOR AND SELF-CLOSING KINGS... SECTION 9 - MECHANICAL: 1400 PLUMBING FIXTURES: PLUMBING FIXTURES SHALL COMPLY WITH ALL OF THE REQUIREMENTS OF CBC SECTION 11108.

THESE DRAWINGS AND ALL MATERIAL CONTAINED HEREIN ARE THE PROPERTY OF SILVERCREEK INDUSTRIES, INC. (SCI) AND SHALL NOT BE REPRODUCED, COPIED OR OTHERWISE DISPOSED OF DIRECTLY OR INDIRECTLY AND SHALL NOT BE USED IN WHOLE OR IN PART TO ASSIST IN THE MAKING OF OR FOR THE PURPOSE OF FURNISHING ANY INFORMATION FOR THE MAKING OF DRAWINGS, PRINTS, APPARATUS OR PARTS THEREOF WITHOUT THE FULL KNOWLEDGE AND WRITTEN CONSENT OF SCI INC.



PROJECT NAME: CLASS LEASING CLASSROOM BLDG'S

SYMBOLS LEGEND, ABBREVIATIONS & ADA SIGNAGE

Professional stamps and signatures, including 'REVISED' stamp dated FEB 26 2015 and 'REGISTERED ARCHITECT' stamp dated NOV 27 2014.

PROJECT SPECIFIC STATE AGENCY APPROVAL

Professional stamps and signatures, including 'OFFICIAL SEAL OF THE STATE ARCHITECT' dated NOV 27 2014.

ORIGINAL PC STATE AGENCY APPROVAL

Professional stamps and signatures, including 'OFFICIAL SEAL OF THE STATE ARCHITECT' dated NOV 27 2014.

REVISIONS PER PROJECT SPECIFIC REQUIREMENTS - 03.13.2014

SILVER CREEK INDUSTRIES 37' x 49' PC

PROJECT NO: DRAWN BY: SCALE: AS NOTED DATE: 12-29-11 P.C. SHEET NUMBER

A-0.1 STKP 140