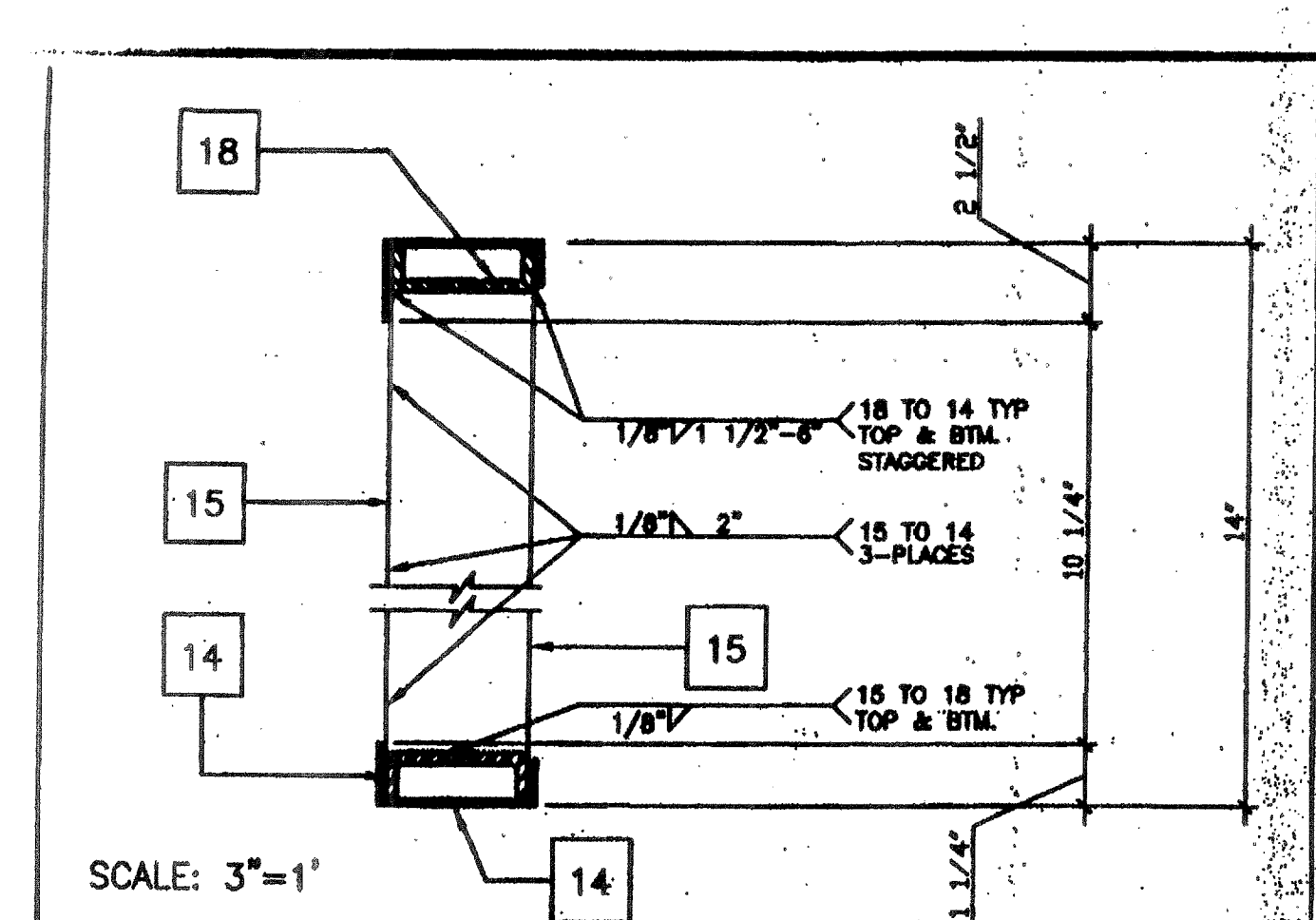
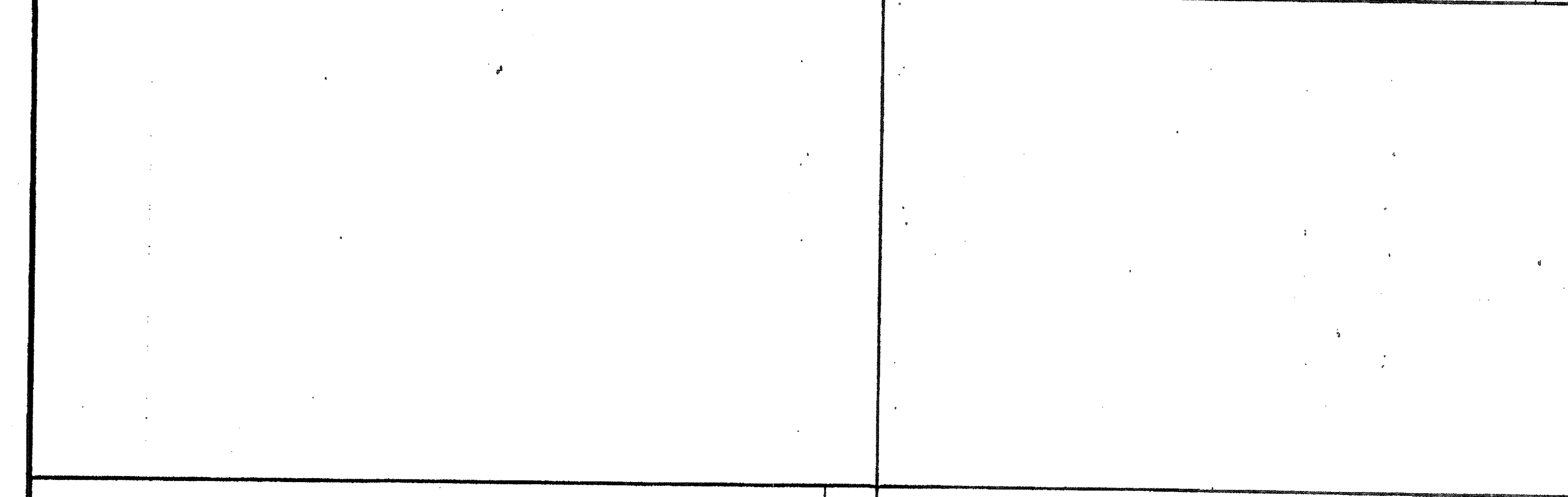


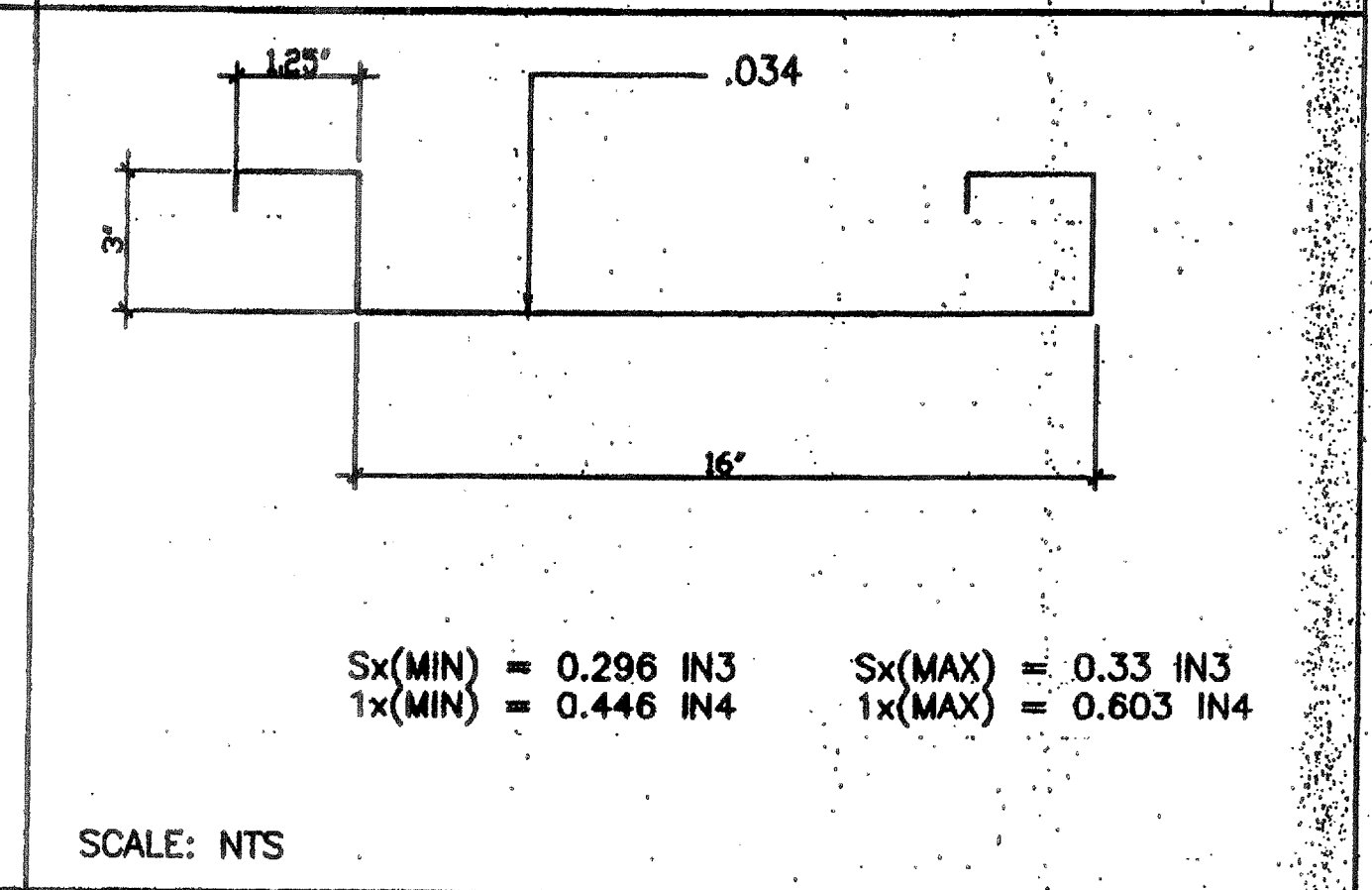
MECH. DUCT OPENING IN ROOF BM. 8



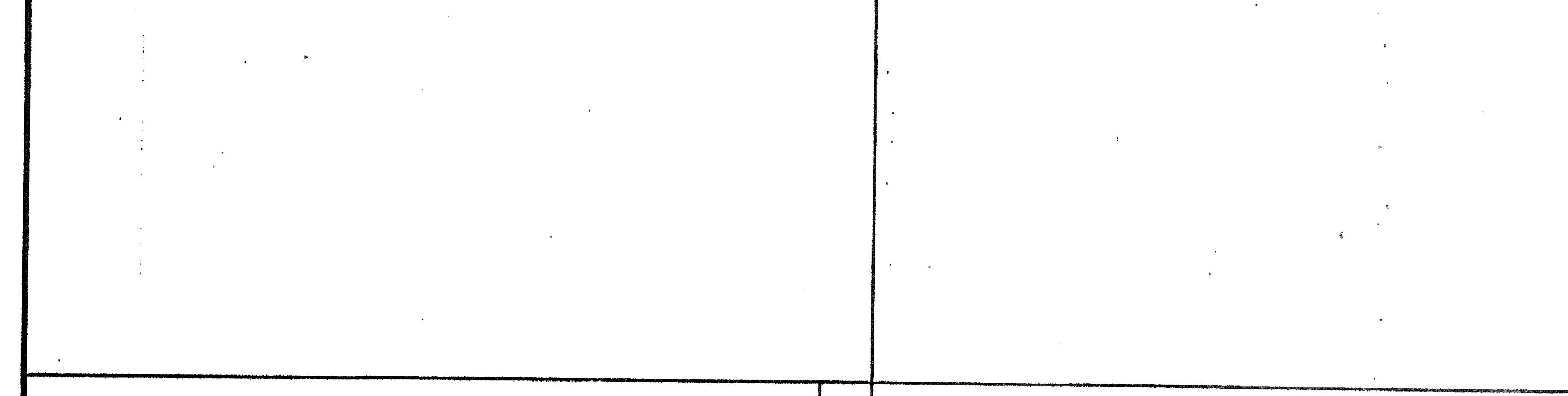
MECH. DUCT OPENING IN HEADER 4



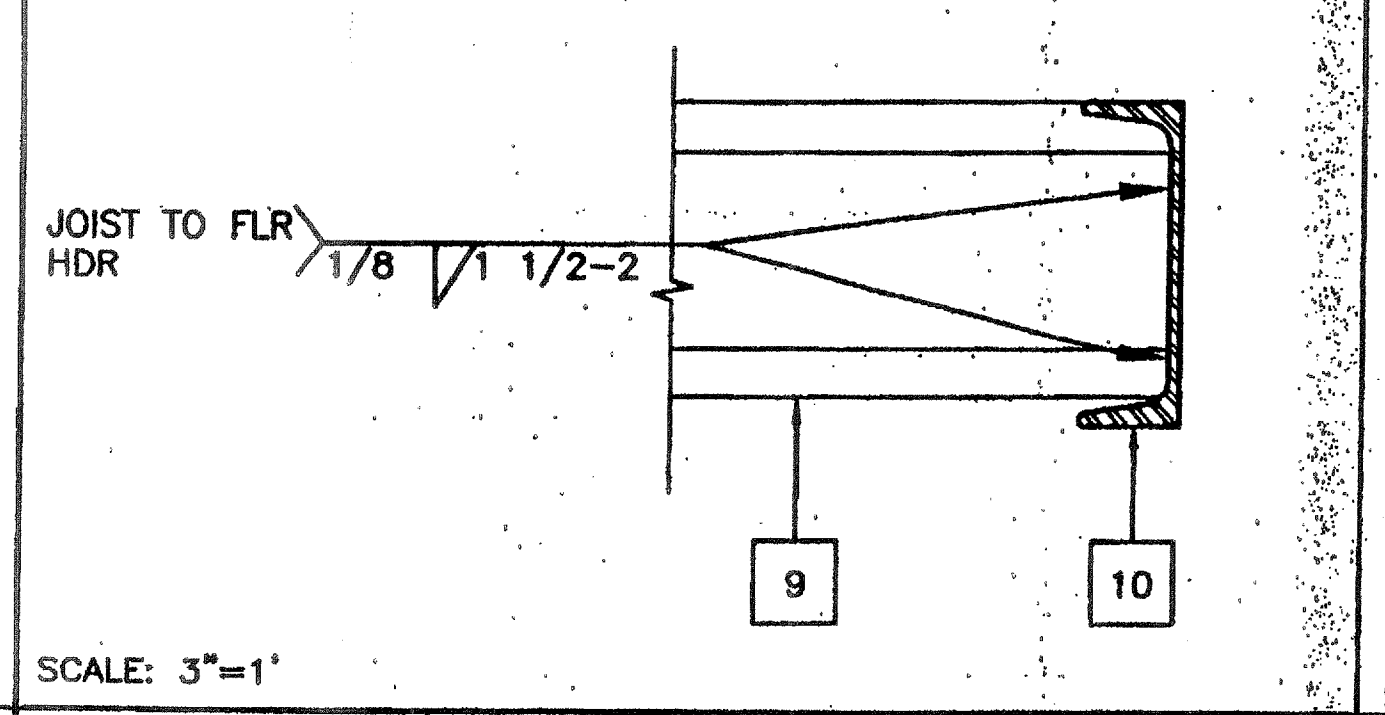
ROOF PAN (22GA.) 5



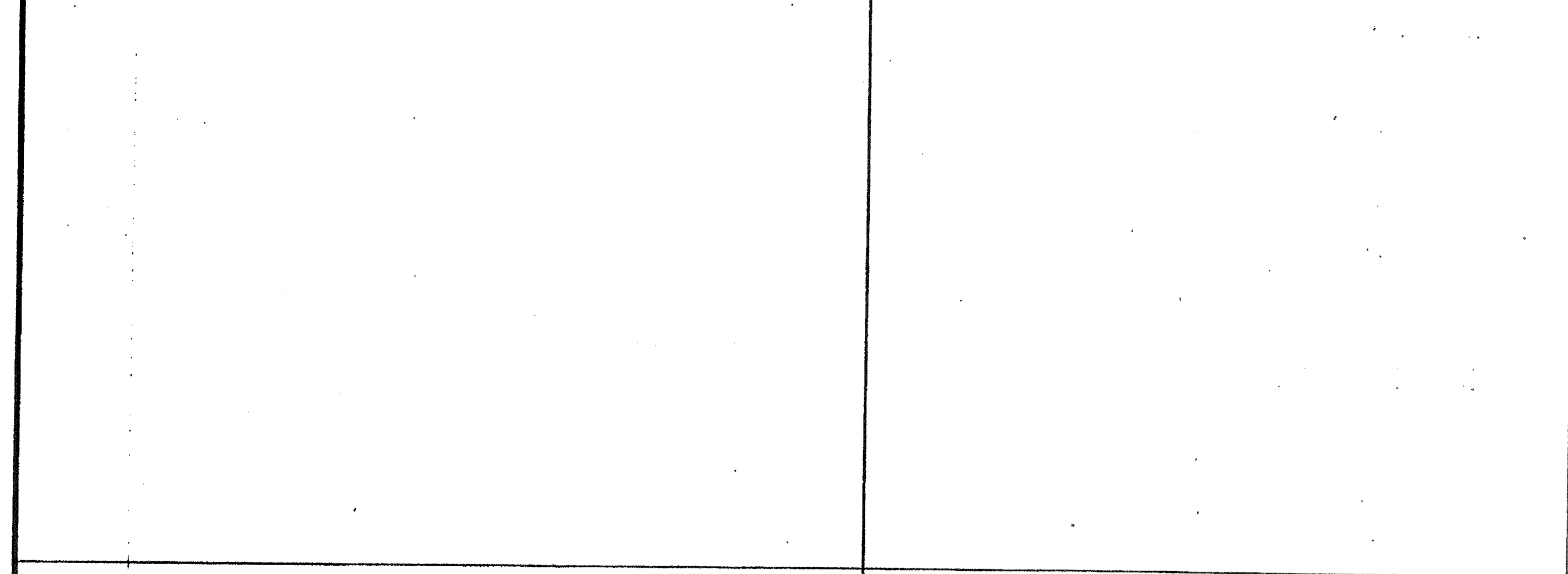
ROOFING • MODLINE 1



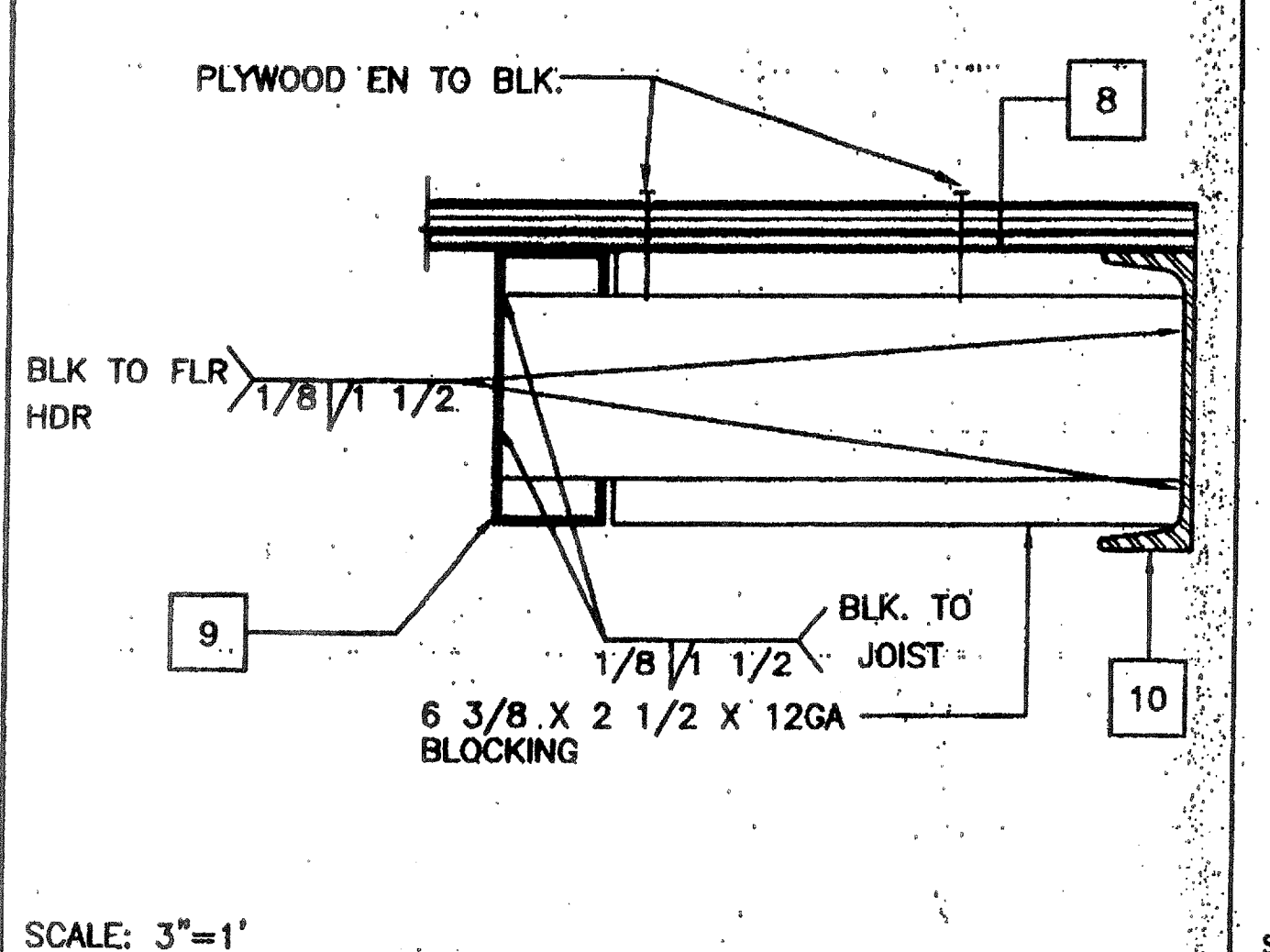
FLOOR FRAME/JOIST TO BEAM 6



MODULE JOINT AT FLR. 12'-0" 2



BLOCK AT MIDSPAN 10



ELEVATION-OPENING 7

- KEY NOTES**
- 1 CAP CLOSURE AT RIDGE 26GA. GALV. W/#10 TYPE FASTENERS W/NEOPRENE WASHERS TO RIB BOTH SIDES OF MODLINE. SET CAP IN SEALANT. BOTH SIDES.
  - 2 5/8" M.B. A307 MODULE JOINT (SEE STRUCTURAL PLAN FOR LOCATION) AT 8" O.C.
  - 3 E.N.
  - 4 MODULE JOINT
  - 5 1/4" THK X 3" FULL DEPTH STIFFENER PLATE AT RIDGE ONLY (SEE 9/S2.2)
  - 6 STANDING ROOF SEAM (SEE A2.0)
  - 7 ROOF BEAM SEE 1/S2.2 & 7/S2.2
  - 8 PLYWOOD FLOOR SHEATHING
  - 9 FLOOR JOIST SEE 6/S2.2
  - 10 FLOOR BEAM SEE 5/S2.2
  - 11 HAND HOLE AT BOLT LOCATION
  - 12 #14 STSMS.
  - 13 3 1/2"x3 1/2"x1/4" STEEL TUBE COLUMN. SEE 12/S2.2
  - 14 ROOF HEADER SEE 3/S2.2
  - 15 1/4" STIFFENER PLATE SEE 9/S2.2 FOR TYP. WELD
  - 16 SEALANT
  - 17 ROOF PURLIN SEE 2/S2.2
  - 18 3 1/4" X 1" X 45 11/16" LG X 10GA CHANNEL TOP AND BOTTOM OF OPENING

**REVISIONS**

1		
2		
3		
4		
5		

Professional Engineer's Seal

PC Professional of Record Seal

Architect's Seal

PC  
CBC 2001  
IDENTIFICATION STAMP  
DIV. OF THE STATE ARCHITECT  
OFFICE OF REGULATION SERVICES  
PC-04

**MODTECH™ INC.**

2830 BARRETT AVENUE FAX (909) 943-4014  
PERRIS, CALIF. 92572 FAX (909) 940-0427

PROJECT NUMBER: 4736  
WILLIAM SCOTTSMAN

© MODTECH, INC. 2002  
ALL RIGHTS RESERVED

**STRUCTURAL DETAILS**

IDENTIFICATION STAMP  
DIV. OF THE STATE ARCHITECT  
OFFICE OF REGULATION SERVICES  
04 185455  
AC RES 116  
DATE JUL 17 2003

IDENTIFICATION STAMP  
DIV. OF THE STATE ARCHITECT  
APPD 116975  
AC FLS SS  
DATE MAY 24 2010

DRAWN BY: GL  
DATE: 07/07/03  
CHECKED BY:  
DATE:  
MODTECH Index No.  
**S1.2**

FILE PATH: PROJECT NO. 4736