

**FIBER OPTIC CABLE**  
 THREE MULTIMODE PAIRS (SIX STRANDS) AND THREE SINGLE-MODE PAIRS (SIX STRANDS)  
 OPTICAL CABLE COMPANY # DX 12/0650-6W3S9/1UC-6SYM-C/YMD/900-OPNR OF EQUAL  
**CAT5E CABLE**  
 5ENP4P24-BL-BER-PV OR EQUAL  
**CABLE TESTING**  
 ALL FIBER OPTIC CABLE MUST BE TESTED TO SUPPORT 1000BASE-FX FULL DUPLEX STANDARDS.  
 ALL CAT 5E CABLE MUST BE TESTED TO SUPPORT 100BASE-TX.  
 TEST RESULTS ARE TO BE PROVIDED TO SCHOOL TECHNOLOGICAL SERVICES FOR REVIEW AND APPROVAL.

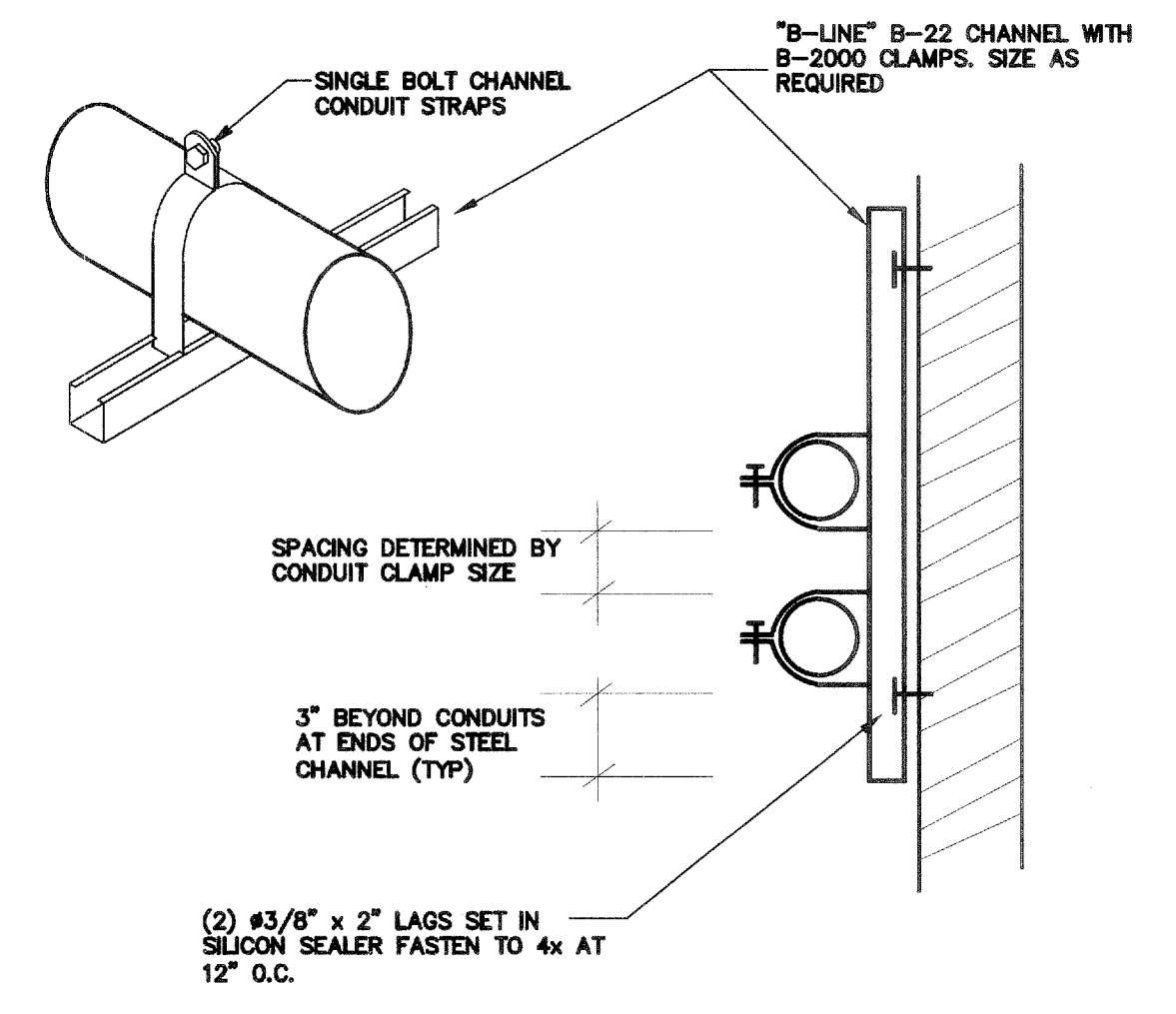
**IDF SWITCH EQUIPMENT**  
 F/O CISCO WS-C2950G-24 W/ WS-C5484 G8IC  
 TP CISCO WS-C2950-24  
 CABINETS SOUTH WESTERN DATA PRODUCT SWE 4000-18DUBLK OR EQUAL  
 JACKS ALLEN TEL AT55-16 OR EQUAL  
 FACEPLATE ALLEN TEL AT30-2-09 OR EQUAL  
 PATCH PANEL ALLEN TEL ATPNL-24 OR EQUAL

**LABELING IDENTIFICATION**  
 ALL INSTALLED EQUIPMENT, CABLES, TERMINATIONS, ETC. WILL BE PERMANENTLY AND UNIQUELY MARKED. CABLES WILL BE MARKED USING A CONVENTION THAT WILL IDENTIFY ITS ORIGIN AND DESTINATION. LAN TERMINATIONS WILL SIMILARLY BE MARKED TO UNIQUELY IDENTIFY THEM WHILE PROVIDING THE SOURCE AND DESTINATION OF CABLE. IDENTIFICATIONS MUST BE SUCH THAT THEY WILL NOT RUB OFF, FALL OFF, OR EASILY BREAK AWAY.

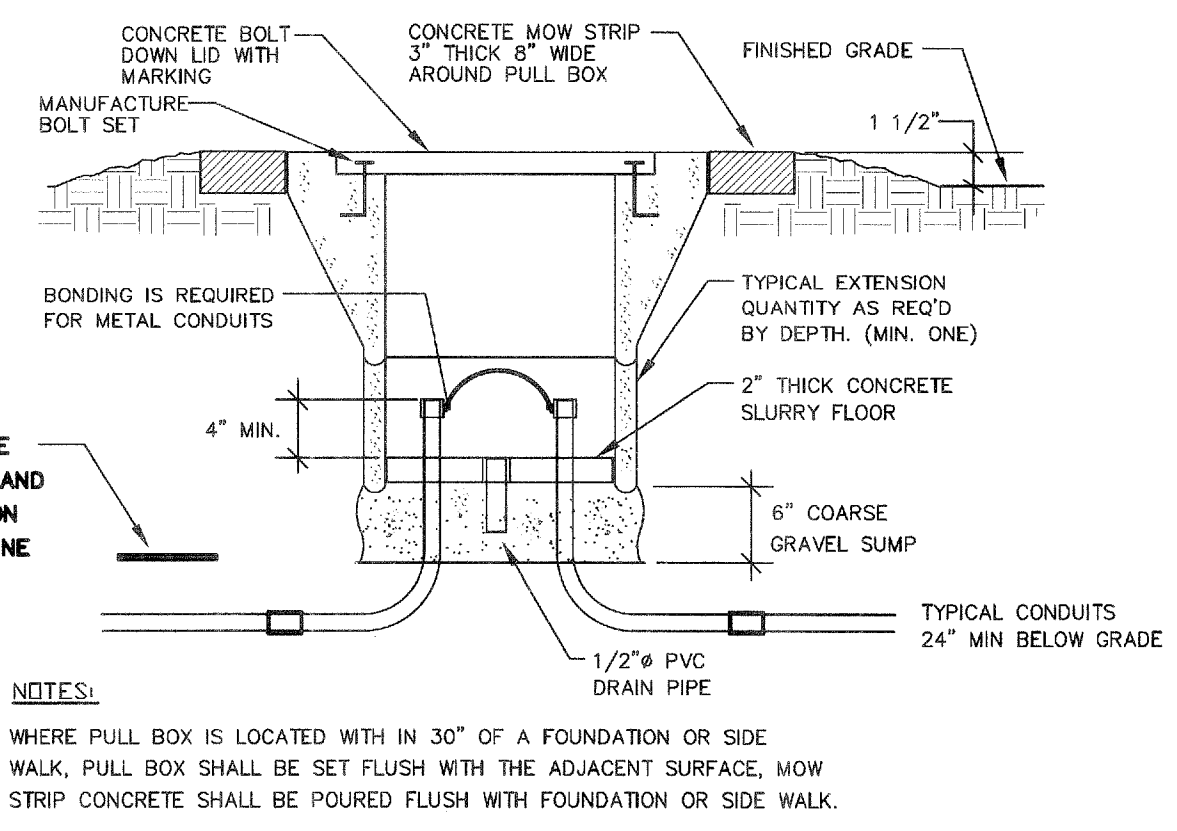
**DATA COMMUNICATION SYSTEM NOTES**  
 1. CONTRACTOR TO PROVIDE ALL EQUIPMENT, PATCH CABLE AND ACCESSORY FOR A FULLY FUNCTIONAL SYSTEM.  
 2. NEW DATA JACK WIRING CONFIGURATION MUST BE MATCHED EXISTING SYSTEM. FIELD VERIFY PRIOR TO INSTALLATION.  
 3. ADMINISTRATIVE NODE TO BE RED IN COLOR WITH THE INSTRUCTIONAL NODE TO BE BLUE IN COLOR. NODE LOCATION MUST BE 12" WITHIN POWER RECEPTACLE AND FIELD VERIFY EXACT LOCATION WITH OWNER PROJECT COORDINATOR OR TECHNOLOGICAL SERVICES PERSONNEL PRIOR TO INSTALLATION.  
 4. ALL EQUIPMENT DOCUMENTATION AND WARRANTY INFORMATION WILL BE PROVIDED TO OWNER TECHNOLOGICAL SERVICES. WARRANTY CARDS WILL BE PROVIDED TO USER TECHNOLOGICAL SERVICES FOR FILING WITH MANUFACTURERS UPON COMPLETION OF INSTALLATION.

7 DATA COMMUNICATION SYSTEM RISER DIAGRAM N.T.S.

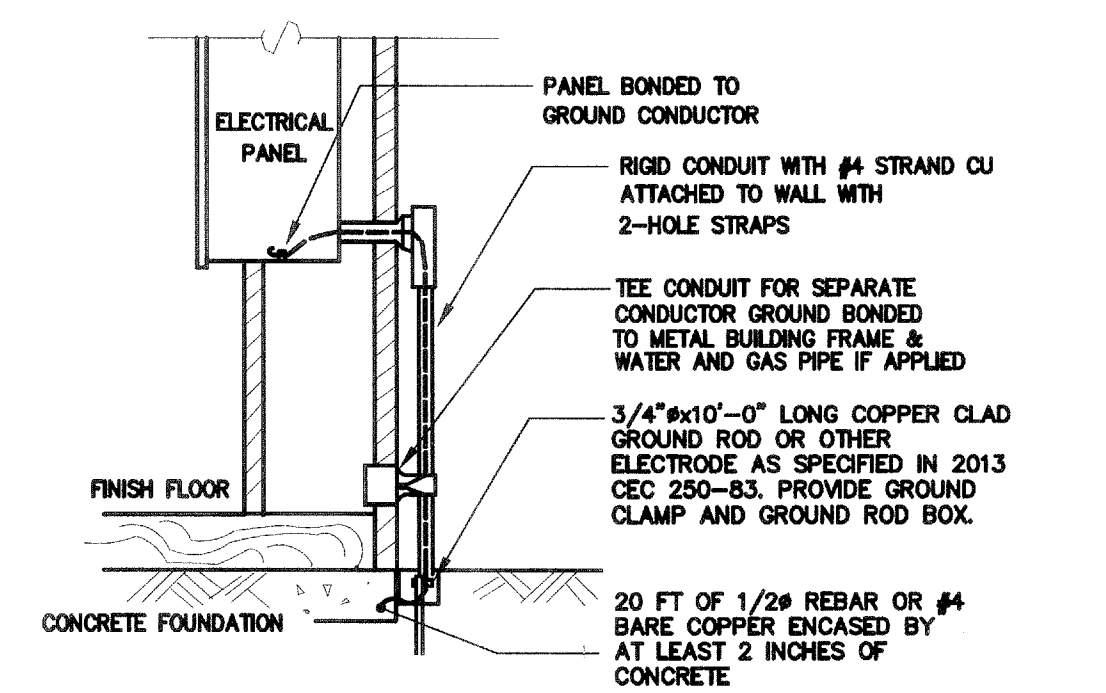
8 FLEX CONDUIT SUPPORT DETAIL N.T.S.



6 CONDUIT SUPPORT DETAIL N.T.S.

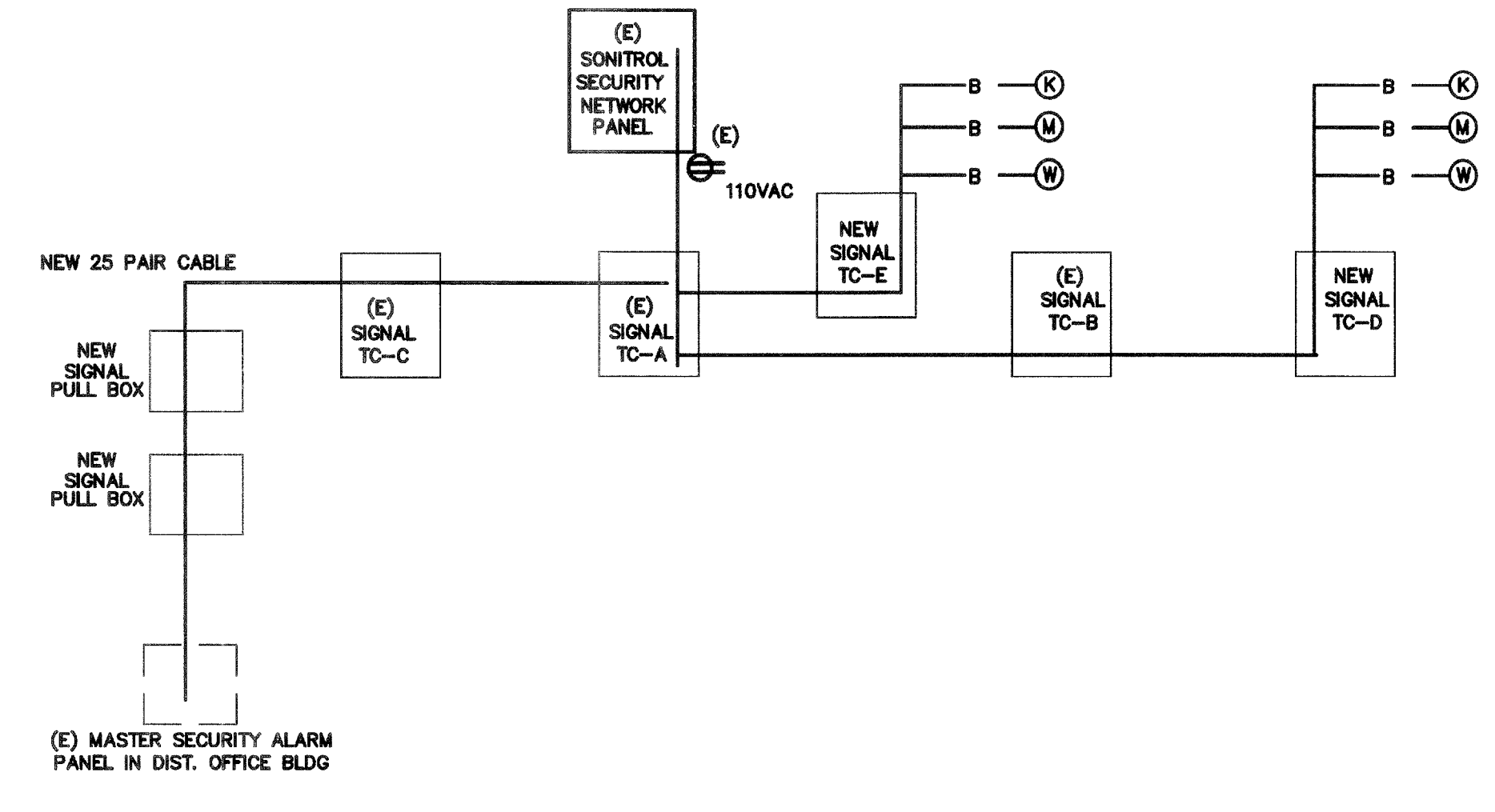


4 PULL BOX AT OPEN YARD DETAIL N.T.S.

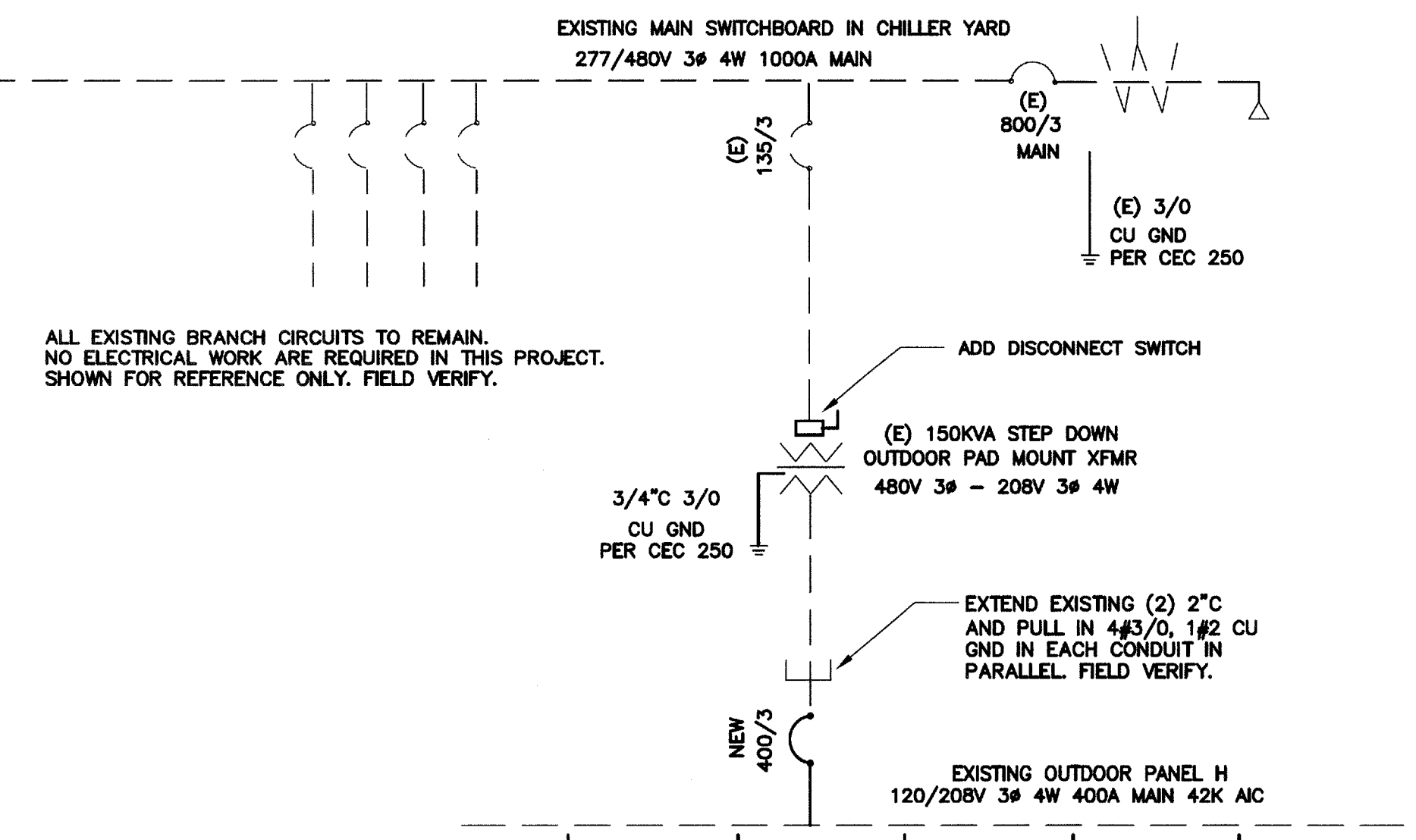
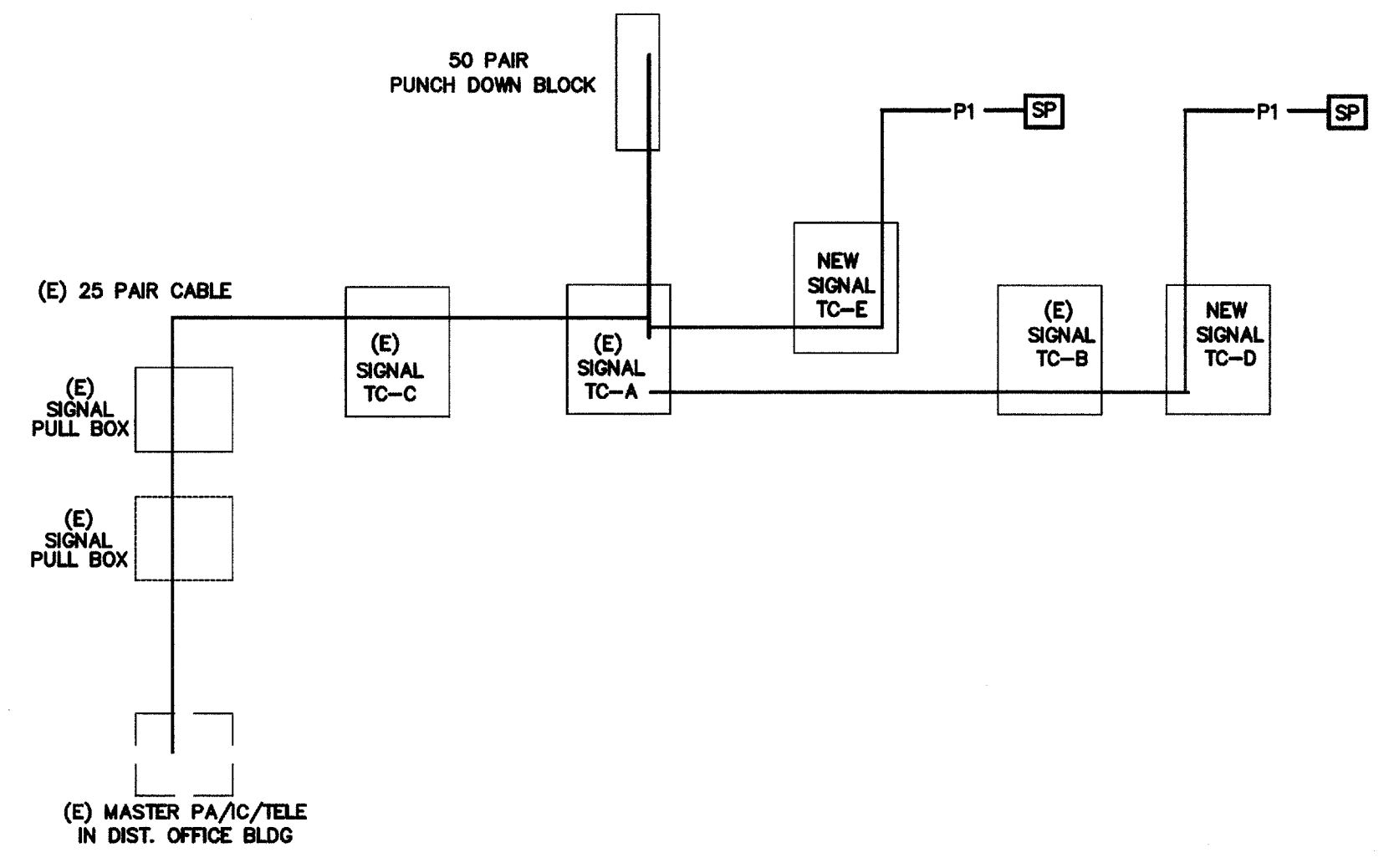


3 GROUNDING DETAIL N.T.S.

5 SECURITY ALARM SYSTEM RISER DIAGRAM N.T.S.



2 PA/IC/TELE SYSTEM RISER DIAGRAM N.T.S.



1 SINGLE LINE DIAGRAM N.T.S.

- NOTES:**
1. PROVIDE NEW MATCHING BREAKERS, FEEDERS AND PANELS PER PLANS.
  2. ALL NEW CONDUCTOR SHALL BE 75C THWN-2 COPPER IN CONDUIT. (AMPACITY FOR CONDUCTOR SELECTION MUST BE DETERMINED/DERATED BY THE ALLOWED TERMINATION RATINGS MARKED/APPROVED ON EACH DEVICES, MOTOR, APPLIANCE, XFMR O.C.P.C. PANEL, ETC. CONDUCTORS INSTALLED IN U.G OR WET LOCATIONS SHALL BE MARKER 'W' PER 2013 CEC 110-14(C)(1)).
  3. ALL WIRING OVER 100 VOLT SHALL BE INSTALLED IN RACEWAY CONDUIT, EMT ABOVE GRADE, PVC SCH. 40 BELOW GRAD AND STEEL CONDUIT ON EXPOSE SURFACE BELOW 8' AFF. FOR PHYSICAL PROTECTION.
  4. MC CABLE WITH SEPARATE GROUND CONDUCTOR CAN BE USED IN CEILING AND CONCEAL IN WALL.
  5. STEEL BACK BOX SHALL BE PROVIDED FOR ALL NEW ELECTRICAL DEVICES SUCH AS SWITCH, OUTLET AND CONDUCTOR SPLICE.
  6. ELECTRICAL CONTRACTOR IS RESPONSIBLE TO VERIFY THE EXISTING SWITCHBOARD AND PANELS ARE INSTALL PER ONE LINE DIAGRAM PRIOR TO WORKING, AND REPORT TO ENGINEERS IF ANY DISCREPANCY ARE FOUND.

Ownership of Documents  
 This document, the ideas and designs incorporated herein, as an instrument of Professional Service is the property of Integrated Designs by SOMAM, Inc. and is not to be used, in whole or in part for any other project without written authorization.  
 © COPYRIGHT 2013

**integrated designs** by SOMAM, Inc.  
 ARCHITECTURE - INTERIOR DESIGN - CONSTRUCTION MANAGEMENT  
 6011 N. Fresno, Suite 130 - Fresno, California 93710  
 Phone: (559) 436-0861 Fax: (559) 436-0867 E-Mail: design@integrateddesigns.com  
 www.integrateddesigns.com

Rev. Date	Revision Description

**DETAILS AND SYSTEM DIAGRAMS**

Project Name & Address:  
**WAYSIDE ELEMENTARY SCHOOL**  
**1 RELOCATABLE CLASSROOM**  
 BAKERSFIELD CITY SCHOOL DISTRICT  
 1000 MING AVE., BAKERSFIELD, CA

Issue Date: 00/00/14  
 Date: 05/27/14  
 Designer: J. CHONG  
 Checker: J. CHONG  
 P.C.: C.A.M.

Agency Approval Stamp:

IDENTIFICATION STAMP:  
 DIV. OF THE STATE ARCHITECT  
 APPROX 116975  
 AC: FLS, SPSS, ST  
 DATE: MAY 24 2016

Stamp(s):

Job No.: **5170**

Sheet No.: **E-4**

Release:

CONSULTING ENGINEERS  
**JOHN CHONG ENGINEERING**  
 JOHN S. CHONG  
 E 14419  
 Exp. 6/30/2016  
 ELECTRICAL  
 REGISTERED PROFESSIONAL ENGINEER  
 STATE OF CALIFORNIA

1071 E. DELGATE AVE., FRESNO, CA 93710  
 (559) 325-2266 • FAX 257-3401  
 jchongin@aol.com