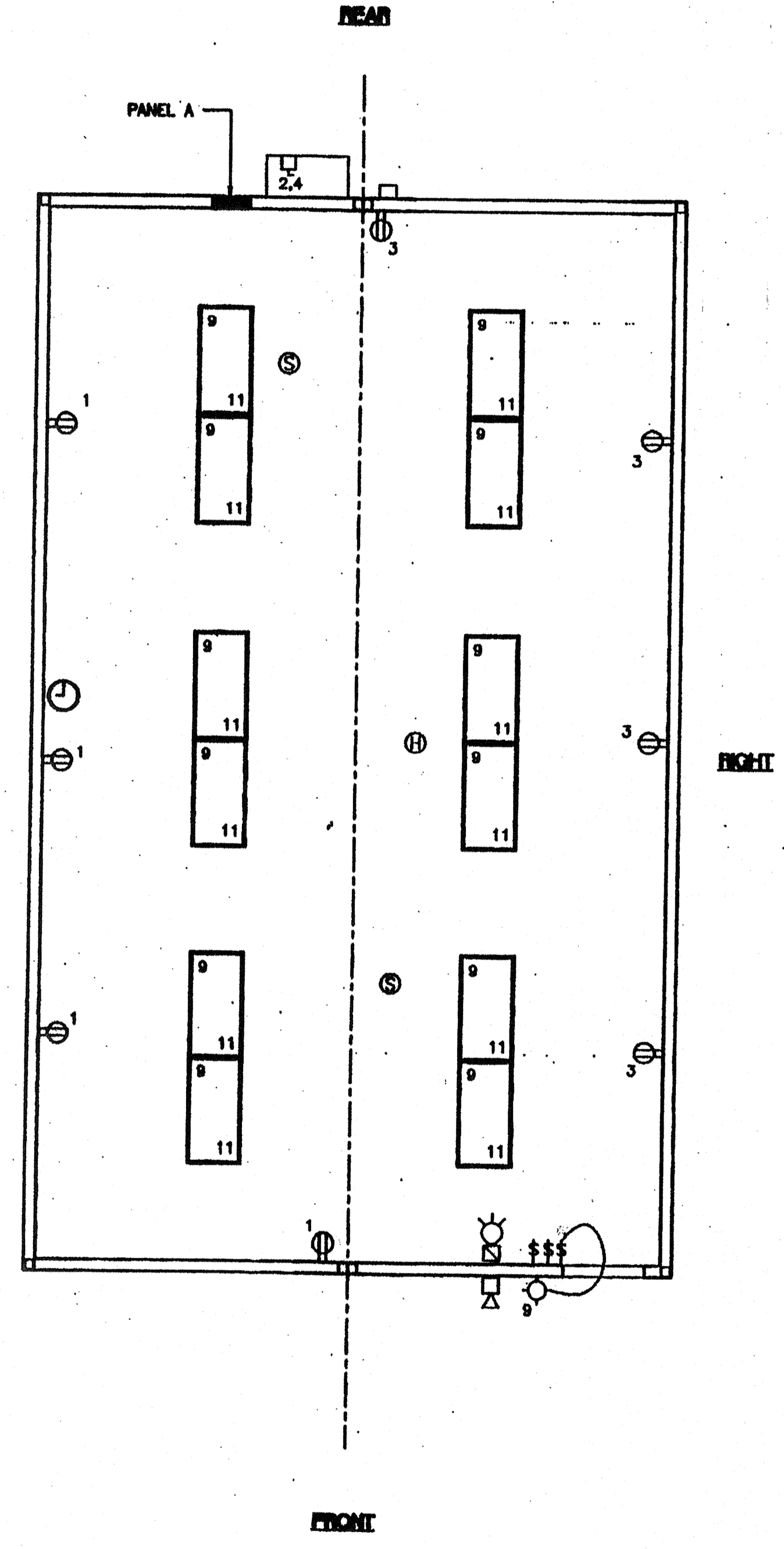
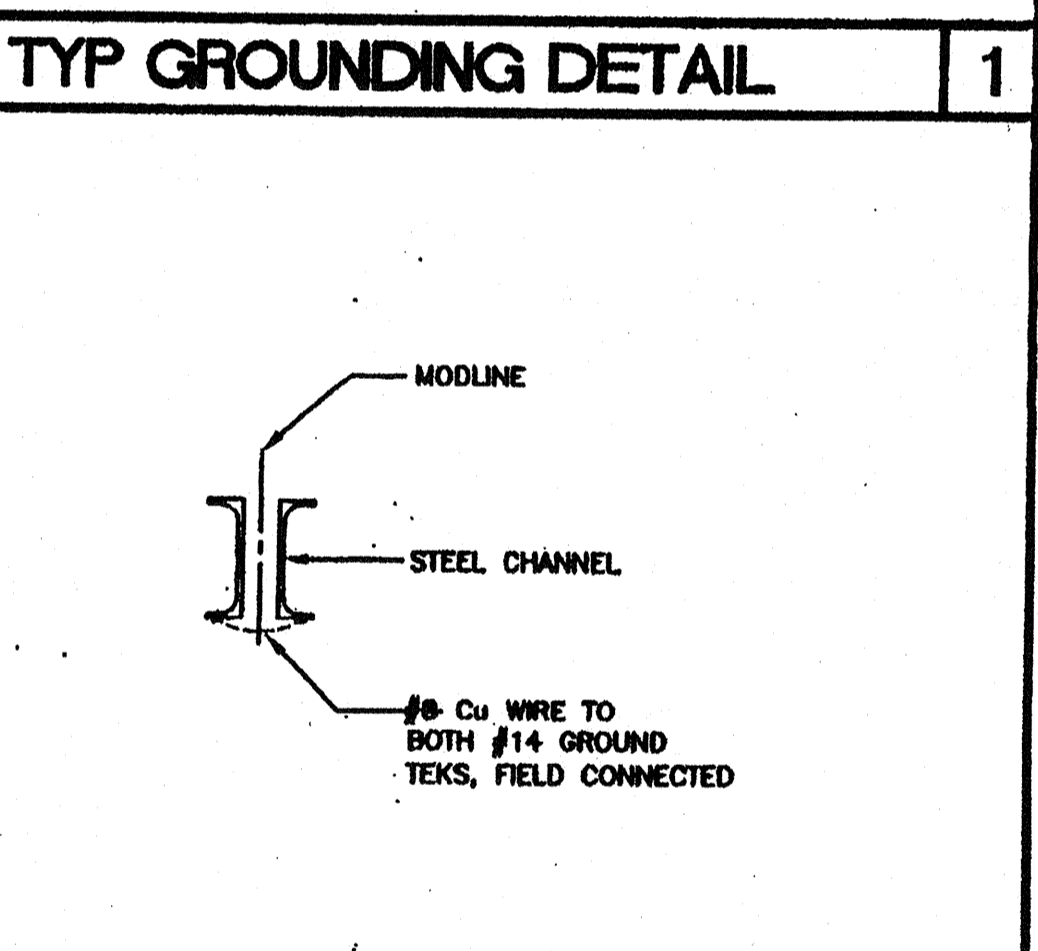
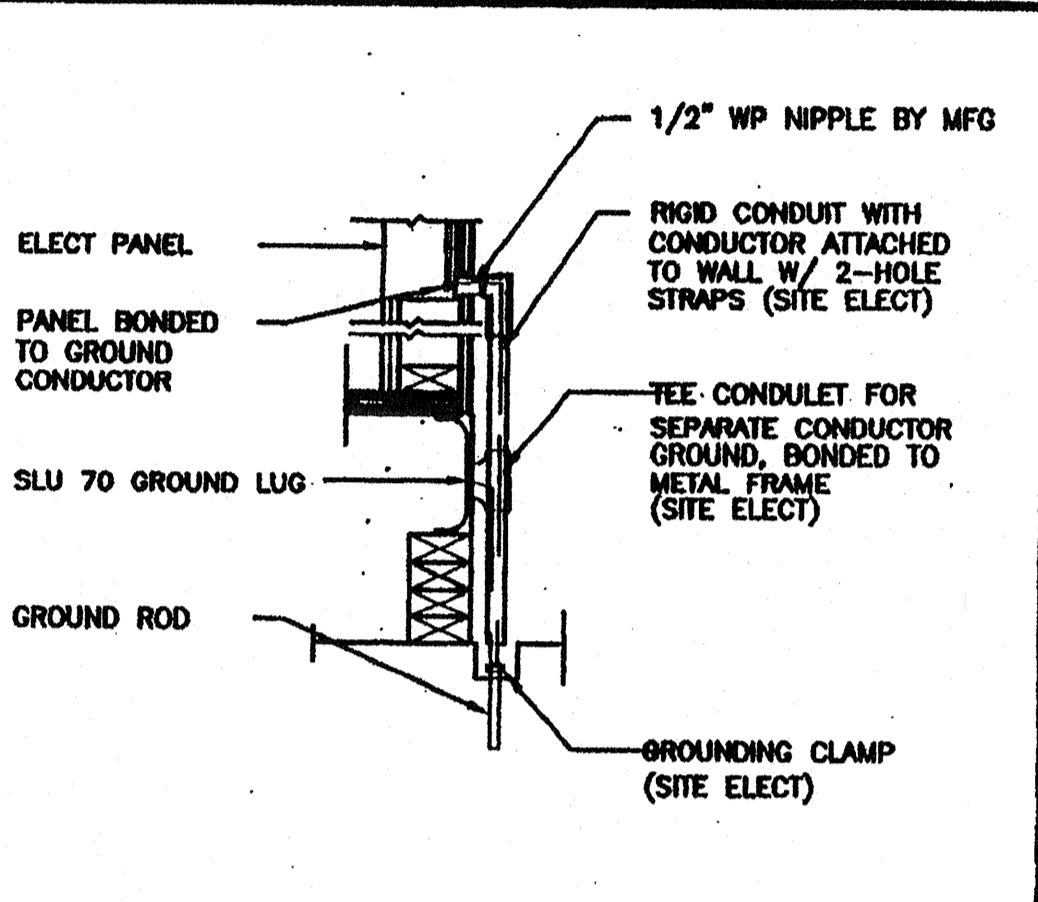


### ELECTRICAL PANEL SCHEDULE

LOAD	WATTS		BREAKER				WATTS		LOAD
	A <sub>P</sub>	B <sub>P</sub>	Amps	P	Q	R	A <sub>P</sub>	B <sub>P</sub>	
RECEPTACLE	720	20	1	1			7080		HVAC (3 1/2T)
RECEPTACLE/CLOCK		720	20	1	3			7080	HVAC (3 1/2T)
INT/EXT LIGHTS	900				7				
INT. LIGHTS		840	20	1	11			40	FIRE ALARM (DEDICATED)
WATTS/PHASE	A = 8700		1820		1580		7080		B = 8680
TOTAL	17380	72	AMPS		120/240	VOLTS	SINGLE #		THREE WIRE

- ### GENERAL GROUNDING NOTES
- EACH BUILDING SHALL BE SEPARATELY GROUNDING WITH A 3/4" RD. X 8' COPPERCLAD STEEL GROUND ROD, WHERE ROCK BOTTOM IS ENCOUNTERED, ROD SHALL BE DRIVEN AT AN ANGLE NOT TO EXCEED 45 DEGREE'S FROM THE VERTICAL OR SHALL BE BURIED IN A TRENCH THAT IS AT LEAST 30" DEEP (BY SITE ELECTRICAL)
  - TESTING: TEST FOR RESISTANCE TO GROUND, IF RESISTANCE EXCEEDS 25 OHMS, INSTALL ADDITIONAL GROUND RODS SEPARATED AT LEAST 6'-0" UNTIL RESISTANCE IS REDUCED TO 25 OHMS OR LESS. (BY SITE ELECTRICAL)
  - APPROVAL OF THIS PLAN DOES NOT CONSTITUTE APPROVAL OF THIS FIRE ALARM FOR ALL SITES. THE FIRE ALARM SYSTEM AND/OR COMPONENTS MAYBE REQUIRED TO BE CHANGED DUE TO SITE LOCATION, EXISTING CONDITIONS OR INCOMPATIBLE COMPONENTS.
  - GROUND MG TEST SHALL BE DONE IN THE PRESENCE OF THE PROJECT INSPECTOR. ALL GROUNDING SHALL BE IN ACCORDANCE WITH CEC ARTICLE 250.

- ### ELECTRICAL LEGEND
- 2x4' TB LIGHTS W/ELECT. BALLAST
  - EXTERIOR LIGHT FIXTURE AT +03' AFF
  - SWITCH AT +48' AFF
  - SWITCH AT +48' AFF FOR EXT. LIGHT
  - DUPLEX WALL RECEPTACLE 15A 125V 3-WIRE AT +18' AFF UON
  - HVAC UNIT (HV)
  - 
  - 
  - 
  - 
  - 
  - CLOCK AT +90' AFF
  - 
  - 
  -



**ELECTRICAL PLAN**  
OPP-HAND (24'x40')  
SCALE: 1/4" = 1'-0"

- ### NOTES
- SCHOOL EQUIPMENT ANCHORAGE  
THE FOLLOWING IS FOR THE ARCHITECTS INFORMATION ONLY:  
THE SEISMIC ANCHORAGE OF ELECTRICAL EQUIPMENT SHALL CONFORM TO CCR TITLE 24, SECTION 1832A AND TABLE 18A-D. ANCHORAGE DETAILS FOR ROOF/FLOOR MOUNTED EQUIPMENT WEIGHING LESS THAN 400 LBS & HUNG EQUIPMENT WEIGHING LESS THAN 20 LBS MAY BE OMITTED FROM THE PLANS.  
FOR ELECTRICAL DRAWINGS:  
ALL ELECTRICAL EQUIPMENT SHALL BE BRACED OR ANCHORED TO RESIST A HORIZONTAL FORCE ACTING IN ANY DIRECTION USING THE FOLLOWING CRITERIA:  

<u>EQUIPMENT ON GRADE</u>	<u>33% OF OPERATING WEIGHT</u>
<u>EQUIPMENT ON STRUCTURE</u>	<u>40% OF OPERATING WEIGHT</u>

FOR FLEXIBLY MOUNTED EQUIPMENT USE 4 TIMES THE ABOVE VALUES, AND FOR SIMULTANEOUS VERTICAL FORCE USE 1/3 TIMES THE HORIZONTAL FORCE.  
THE ABOVE VALUES ARE FOR AN IMPORTANCE FACTOR, I = 1.0 AND SEISMIC ZONE, Z = 4  
WHERE ANCHORAGE DETAILS ARE NOT SHOWN ON THE DRAWINGS THE FIELD INSTALLATION SHALL BE SUBJECT TO THE APPROVAL OF THE ARCHITECT AND THE FIELD ENGINEER OF THE OFFICE OF THE STATE ARCHITECT.

IDENTIFICATION STAMP  
DIV. OF THE STATE ARCHITECT  
APPO3 115891  
AC W FLS SS TB  
DATE: 7/24/04

IDENTIFICATION STAMP  
DIV. OF THE STATE ARCHITECT  
OFFICE OF REGULATION SERVICES  
04 105455  
AC W FLS SS TB  
DATE: JUL 17 2003

REVISIONS	Electrical Engineer's Seal	Mechanical Engineer's Seal	PC Professional of Record Seal	Architect's Seal

PC  
CBC 2001  
IDENTIFICATION STAMP  
DIV. OF THE STATE ARCHITECT  
OFFICE OF REGULATION SERVICES  
PC-04  
104796  
AC W FLS SS TB  
DATE: 5/2/03

**MODTECH™**  
2830 BARRETT AVENUE FAX (909) 943-4014  
PERRIS, CALIF. 92572 FAX (909) 940-0427

PROJECT NUMBER: 4736 © MODTECH, INC. 2002 ALL RIGHTS RESERVED  
WILLIAM SCOTTSMAN  
DRAWN BY: GL DATE: 07/07/03  
CHECKED BY: DATE:   
MODTECH Logo No. **E1.03**

PROJECT NO. 4736  
PC-04-104796