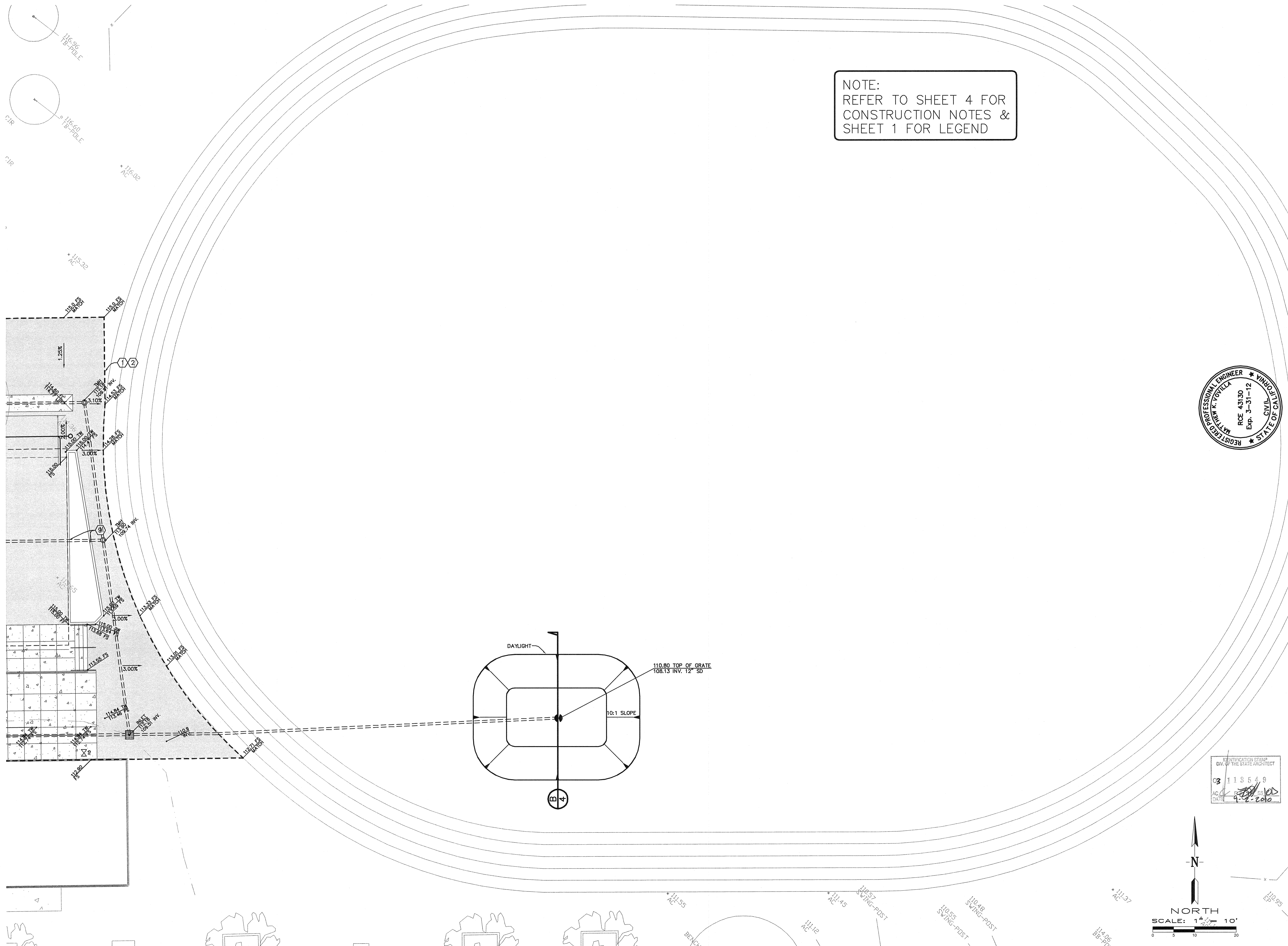
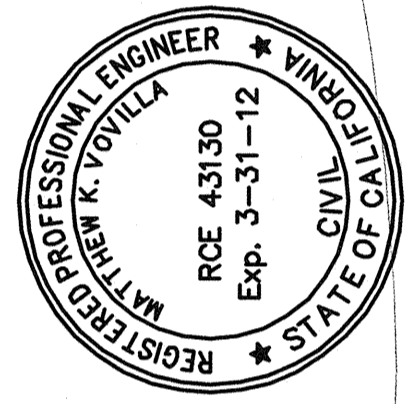


SEE SHEET 7



NOTE:
REFER TO SHEET 4 FOR
CONSTRUCTION NOTES &
SHEET 1 FOR LEGEND



Pinnacle Civil Engineering, Inc.
4620 California Avenue, Bakersfield, CA 93309
Phone: (661) 869-0184 Fax: (661) 377-0076

REVISIONS	DATE
MATTHEW K. VOVILLA	
RCE 43130 EXP. 3/31/12	

GRADING SHEET-STORM WATER DISPOSAL AREA
PIONEER ELEMENTARY SCHOOL
4404 PIONEER DRIVE
BAKERSFIELD, CALIFORNIA

JOB No.:	09-419
DWG No.:	09-419-BM
DATE:	09/01/2010
DRAWN BY:	ADK
CHECKED BY:	MKV
SHEET	8
OF 10 SHEETS	

IDENTIFICATION STAMP
DIV. OF THE STATE ARCHITECT
C3 118549
AC 118549
DATE 9-2-2010

