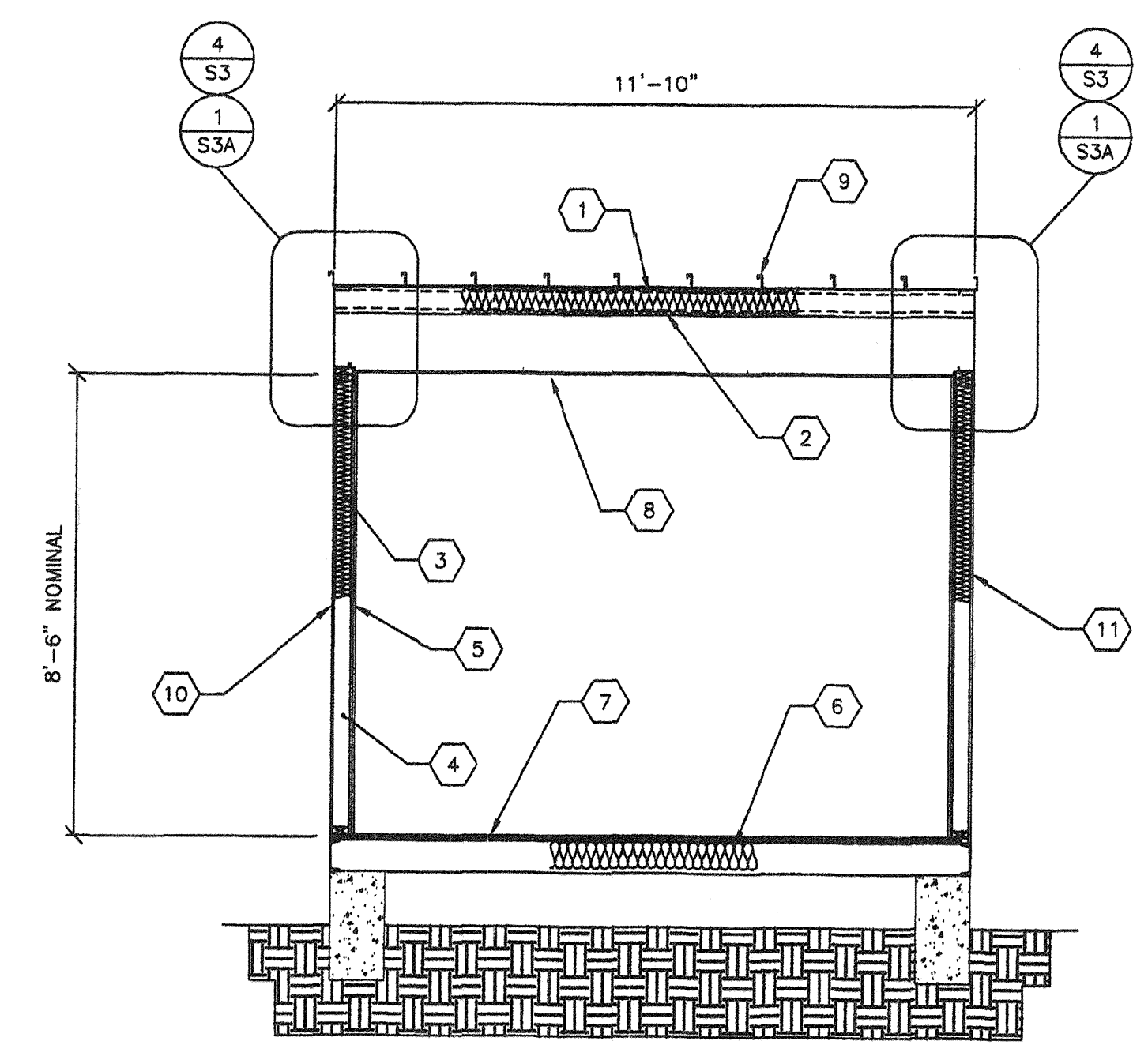


**A TYP. LONGITUDINAL SECTION**  
S7 3/8"=1'-0" (MONO/DUAL PITCH)



**B TYP. TRANSVERSE SECTION**  
S7 3/8"=1'-0" (MONO/DUAL PITCH)

- KEY NOTES -**
- 1 "Z" PURLINS @ 48" O.C
  - 1A STEEL "Z" FLOOR JOISTS
  - 2 INSULATION w/22 GA WIRE
  - 3 INSULATION w/KRAFT PAPER
  - 4 2x STUDS PER ELEV, S5
  - 5 VINYL FABRIC OVER TACKABLE BACKING PANELS
  - 6 INSULATION w/KRAFT PAPER AND CHICKEN WIRE
  - 7 1/2" PLYWOOD FLOOR SHEATHING FOR ALT SEE SHEET S2, S2A OR S2B
  - 8 SUSPENDED T-BAR CEILING
  - 9 METAL ROOF PANELS SEE ROOF FRAMING PLAN
  - 10 TYPICAL PLYWOOD NAILING .131x24" GALV @ 6" O.C PANEL EDGES (ALL EDGES BLOCKED).131x24" GALV @ 12" O.C FIELD
  - 11 EXTERIOR WALL FINISH PER EXTERIOR ELEVATIONS
  - 12 ALTERNATE DUAL PITCH

REVISIONS		
NO	DATE	DESCRIPTION

DATE: 02/25/08  
SCALE: NOTED  
DRAWN BY: DM  
SERIAL NO.:

CUSTOMER:  
  
12' x 40' RELOCATABLE BUILDINGS  
BUILDING SECTIONS

APPROVALS:  
THESE DRAWINGS ARE PRELIMINARY AND NOT FOR CONSTRUCTION UNLESS STAMPED & SIGNED BY THE ENGINEER OF RECORD.  
*[Signature]*



REGISTRATION STAMP  
DIV. OF THE STATE ARCHITECT  
OFFICE OF REGULATION SERVICES  
CS-113549  
AC 4 FLS SS 10  
DATE 9-2-2010

IDENTIFICATION STAMP  
DIV. OF THE STATE ARCHITECT  
OFFICE OF REGULATION SERVICES  
PC 02-109808  
AC FLS SS  
DATE 4/1/09

PROJECT No.  
  
**S7-R**

THESE DRAWINGS AND SPECIFICATIONS ARE THE PROPERTY OF AMERICAN MODULAR SYSTEMS, INC. AND ARE NOT TO BE REPRODUCED, CHANGED OR COPIED IN ANY FORM OR MANNER, NOR ARE THEY TO BE ASSIGNED TO ANY THIRD PARTY WITHOUT THE WRITTEN AUTHORIZATION OF AMERICAN MODULAR SYSTEMS, INC.