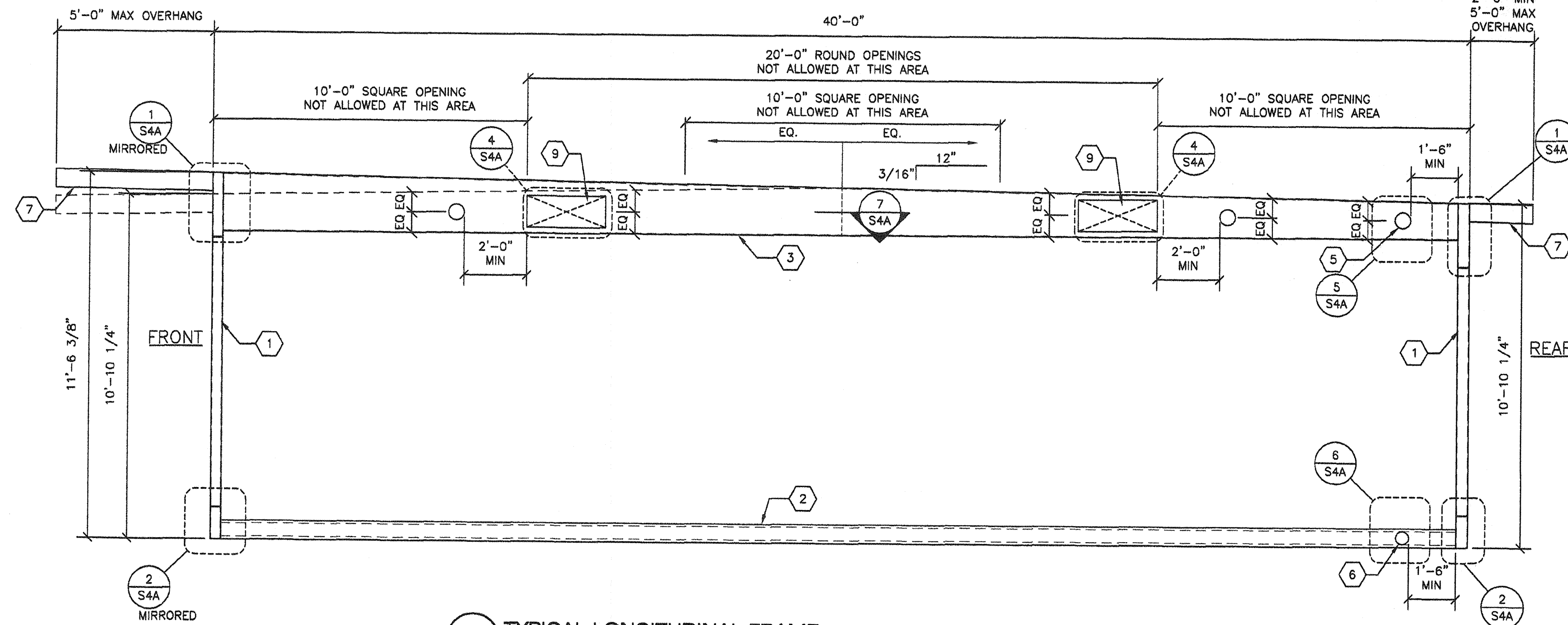
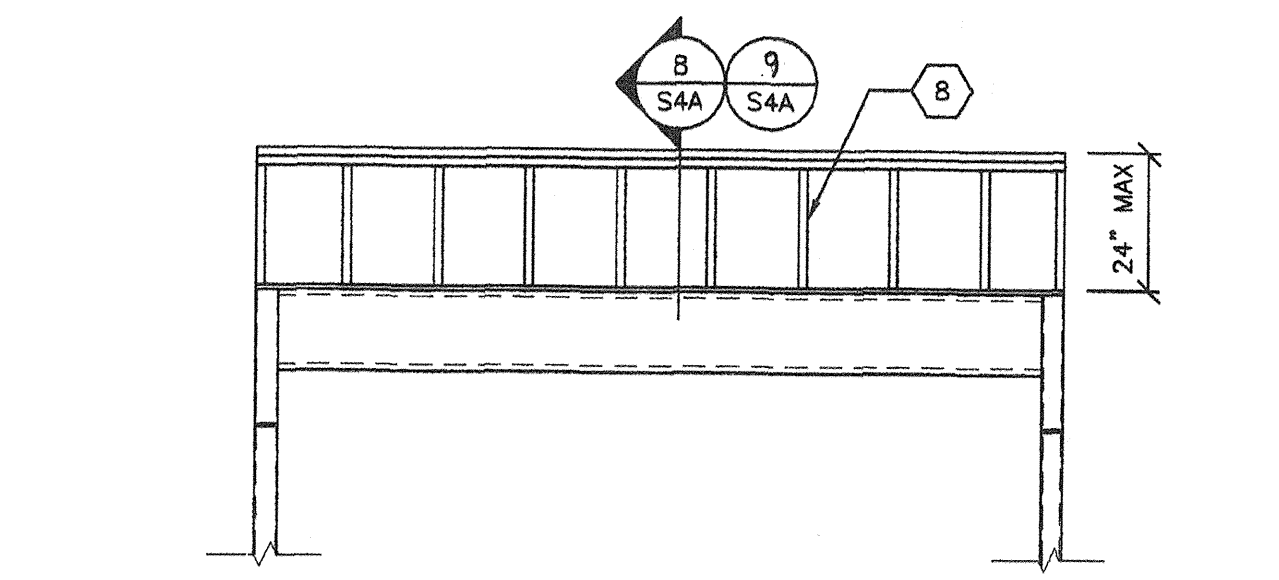


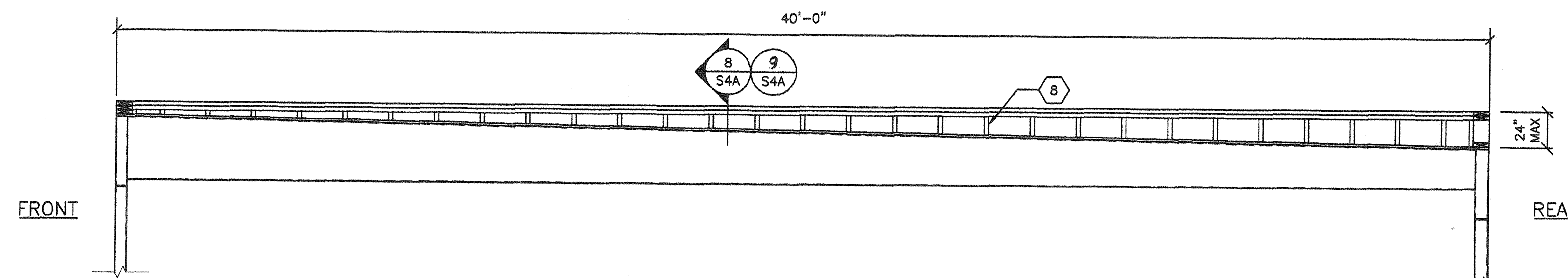
1 TYPICAL TRANSVERSE FRAME
S4 3/8"=1'-0"



1 TYPICAL LONGITUDINAL FRAME
S4 3/8"=1'-0"



4 PARAPET WALL OPTION @ TRANSVERSE FRAME
S4 3/8"=1'-0"



3 PARAPET WALL OPTION @ LONGITUDINAL FRAME
S4 3/8"=1'-0"

- KEY NOTES -

- 1 4x4x5/16 HSS COLUMN
- 2 FLOOR BEAM PER SCHEDULE
- 3 10 GA. LONGITUDINAL ROOF CHANNEL
14"-18"-14" @ DOUBLE SLOPE
14"-22" @ SINGLE SLOPE
- 4 12 GA. TRANSVERSE ROOF CHANNEL
14" MIN 22" MAX
- 5 6" # MAX OPENING IN WEB OF ROOF BEAM WITHOUT WEB REINFORCEMENT
MINIMUM SPACING OF HOLES @ 48" O.C.
HOLES MAY OCCUR @ ANY LOCATION ALONG LENGTH OF ROOF BEAM EXCEPT AS NOTED OTHERWISE ON FRAMING ELEVATION
NOTE: IF HOLE IS 3" OR LESS THEY MAY BE SPACED AT 24" O.C. MINIMUM
- 6 4" # MAX OPENING IN WEB OF FLOOR BEAM WITHOUT WEB REINFORCEMENT
MINIMUM SPACING OF HOLES @ 48" O.C.
HOLES MAY OCCUR @ ANY LOCATION ALONG LENGTH OF FLOOR BEAM WITH DIRECT FOUNDATION SUPPORT BELOW. OPENINGS ARE NOT ALLOWED WHERE BEAMS ARE SPANNING BETWEEN FOUNDATIONS OR ACROSS VENT OPENINGS.
NOTE: IF HOLE IS 2" OR LESS THEY MAY BE SPACED AT 24" MINIMUM
- 7 14 GA OUTRIGGER CHANNEL AT OPTIONAL ENCLOSED OVERHANG
REFER TO DETAIL 1/S4A
- 8 2x6 H.F. #2 OR BETTER STUDS @ 16" O.C.
- 9 12"x 30" MAX OPENING ALLOWED ONLY AT EXTERIOR BEAMS WITH A WALL DIRECTLY BELOW. IF WALL BELOW IT IS REMOVED THEN A COLUMN MUST BE ADDED AT MID SPAN. REFER TO DETAIL 4/S4A FOR OPENING REINFORCEMENT

- FLOOR BEAM SCHEDULE -

SUBFLOOR TYPE	FLOOR BEAM SIZE	ALTERNATES
VIROC OR PLYWOOD	C7x9.8	C9x13.4, C10x15.3
CONCRETE	C9x13.4	C10x15.3

REVISIONS

NO	DATE	DESCRIPTION

DATE: 02/25/08
SCALE: NOTED
DRAWN BY: DM
SERIAL NO.:

CUSTOMER:

12' x 40' RELOCATABLE BUILDINGS
TYPICAL FRAME ELEVATIONS



APPROVALS:
THESE DRAWINGS ARE PRELIMINARY AND NOT FOR CONSTRUCTION UNLESS STAMPED & SIGNED BY THE ENGINEER OF RECORD.
Kenneth A. Luttrell
No. 1418
EXP. 3-31-11
Structural Engineer
STATE OF CALIFORNIA

REGISTRATION STAMP
DIV. OF THE STATE ARCHITECT
OFFICE OF REGULATION SERVICES
CS 118549
AC FLS SS
DATE 9-2-2010

IDENTIFICATION STAMP
DIV. OF THE STATE ARCHITECT
OFFICE OF REGULATION SERVICES
PC 02-109808
AC FLS SS
DATE 4/1/09

PROJECT No.

S4-R

THESE DRAWINGS AND SPECIFICATIONS ARE THE PROPERTY OF AMERICAN MODULAR SYSTEMS, INC. AND ARE NOT TO BE REPRODUCED, CHANGED OR COPIED IN ANY FORM OR MANNER, NOR ARE THEY TO BE ASSIGNED TO ANY THIRD PARTY WITHOUT THE WRITTEN AUTHORIZATION OF AMERICAN MODULAR SYSTEMS, INC.