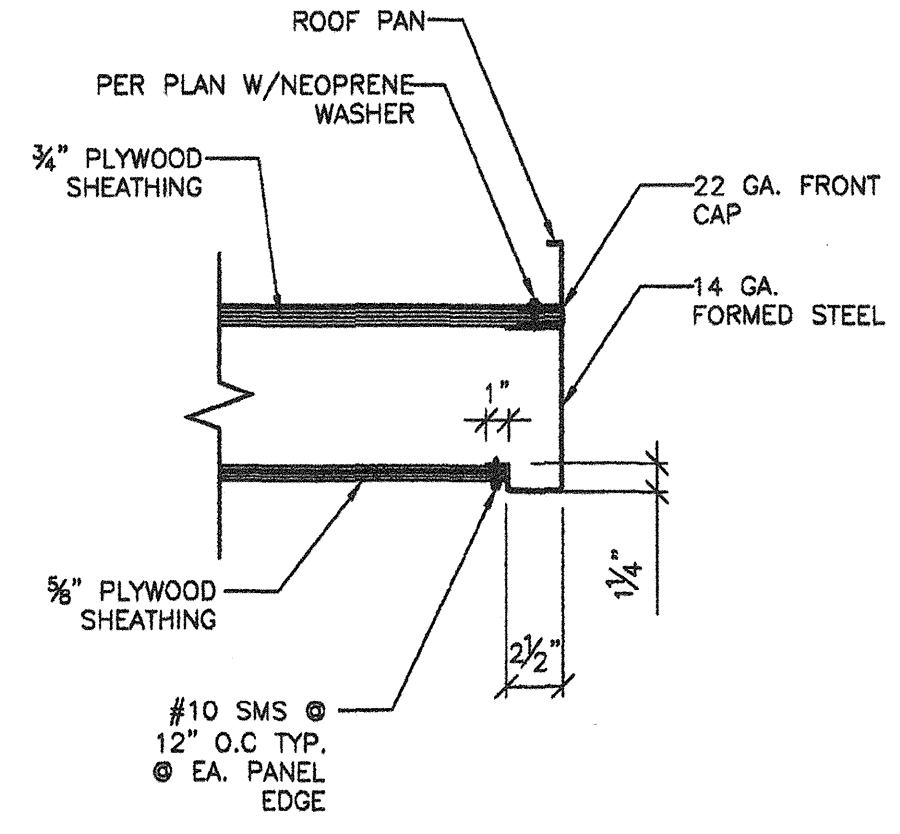
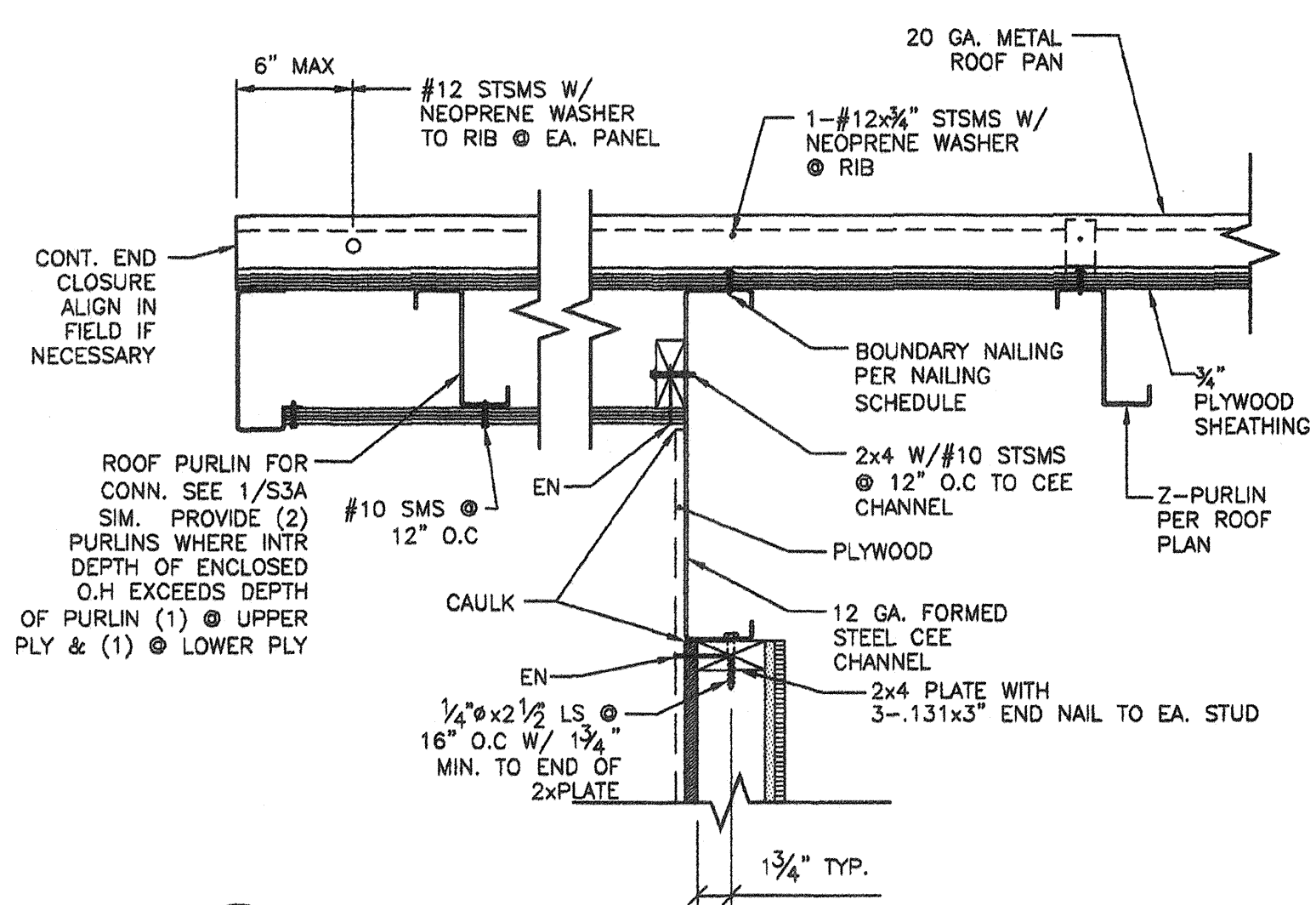


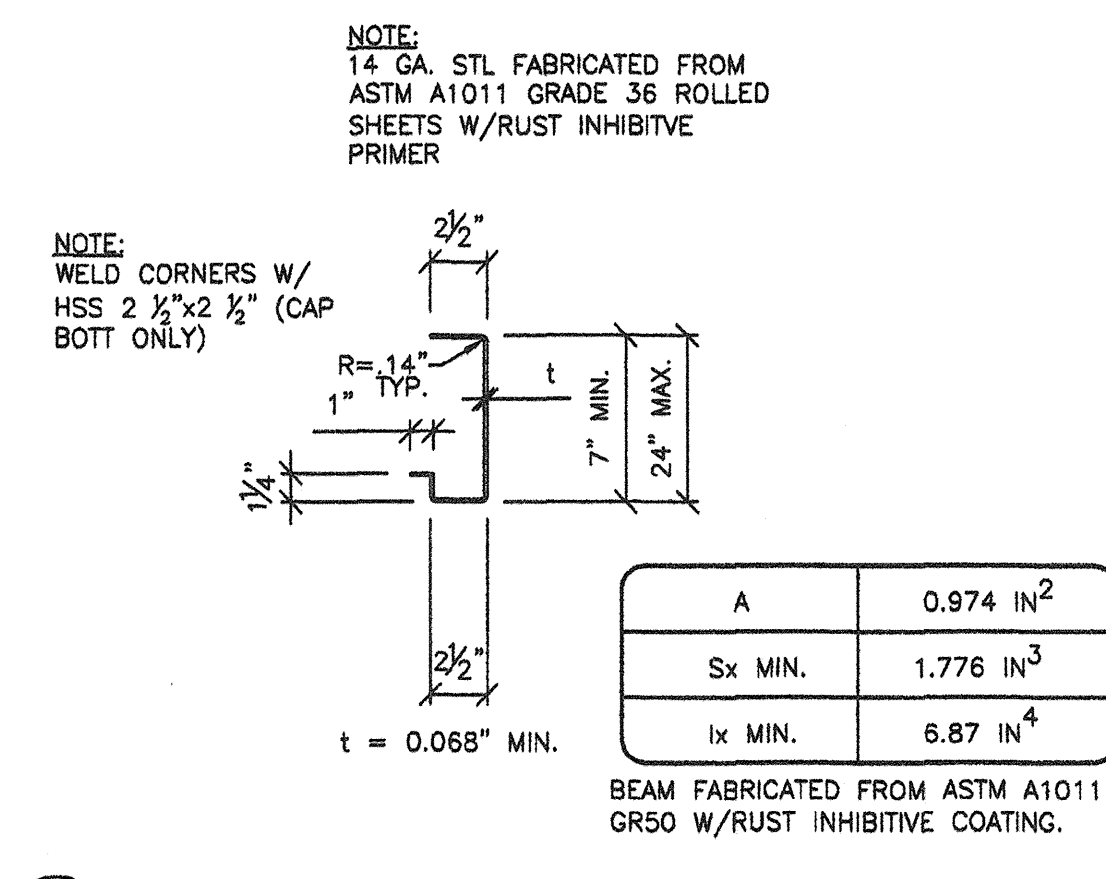
1 DETAIL  
SSA 1 1/2"=1'-0"



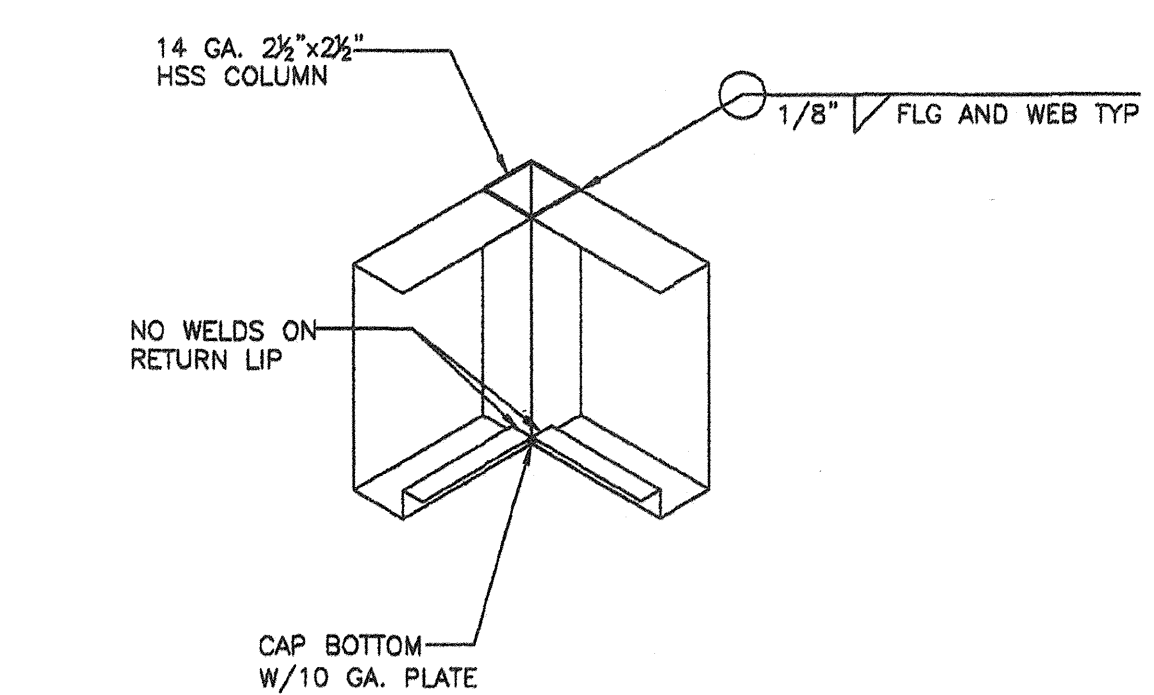
4 ENCLOSED SOFFIT DETAIL  
SSA 1 1/2"=1'-0"



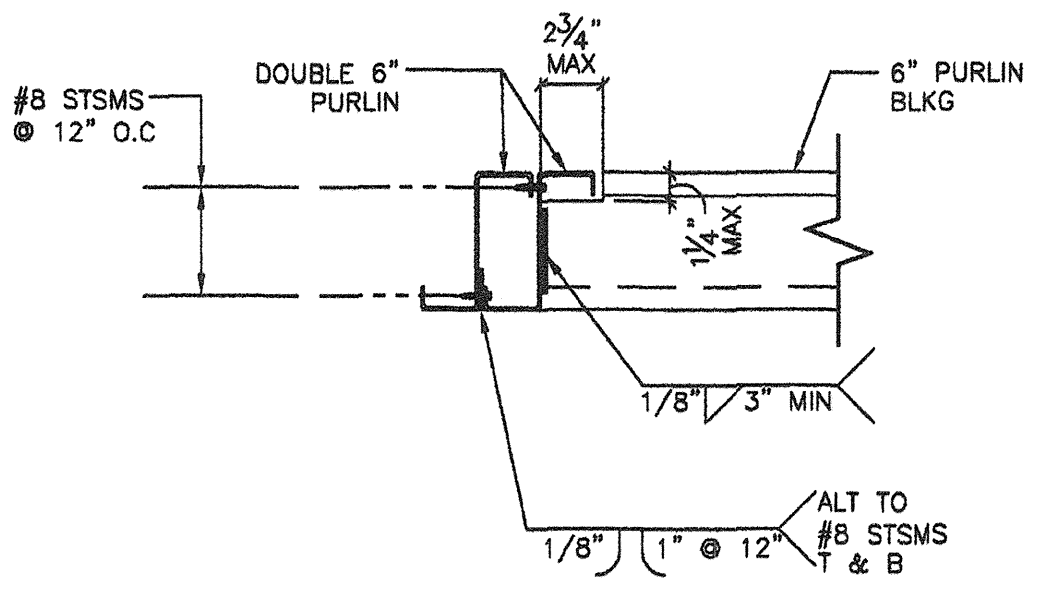
2 OVERHANG DETAIL  
SSA 1 1/2"=1'-0"



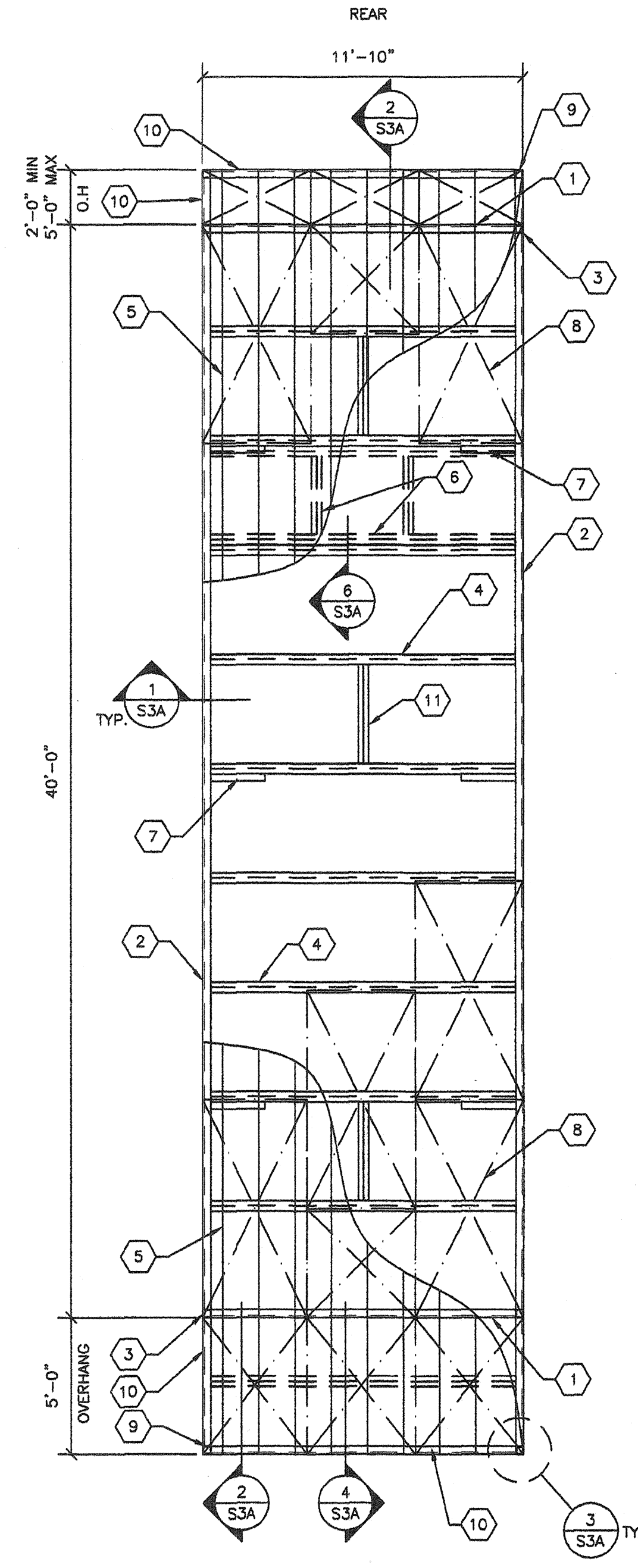
5 14 GA. FORMED STEEL CEE  
SSA 1 1/2"=1'-0"



3 OVERHANG CORNER DETAIL  
SSA NOT TO SCALE



6 BLOCKING DETAIL  
SSA 1 1/2"=1'-0"



A TYPICAL ROOF FRAMING LAYOUT  
SSA 1/4"=1'-0"

- KEY NOTES -**
- 12 GA. TRANSVERSE BEAM PER 10/S3.1
  - LONGITUDINAL ROOF CHANNEL TYP. PER 9/S3.1
  - HSS PER SHEET S4
  - 2" FORMED ROOF PURLINS PER 8/S3.1 @ 48" O.C. MAX
  - 20 GA. ROOF PAN (ALT. 26 GA. ROOF PAN OVER PLYWOOD)
  - PROVIDE DOUBLE 6" PURLINS W/6" PURLIN BLKG PER 6/S3A @ OPTIONAL 600# HVAC. (10'-0" MAX FROM END OF BLDG TO CENTER OF UNIT)
  - 3"x1"x12 GA. BENT PLATE TO 10 GA. BEAM @ 12'-0" O.C MAX PER 1/S3A PROVIDE PURLIN BLOCKING @ EACH BRACE PER (1) BELOW (IF CROSS BRACING IS USED THEN REFER TO PLAN 1/S3 FOR BENT PLATE LOCATIONS, AND PROVIDE CROSS BRACING AT OVERHANGS)
  - 3/4" APA RATED L-P OSB SHEATHING OR 3/4" PLYWOOD (ALL SHEATHING SHALL BE EITHER T&G OR EDGE CLIP) COMPLY WITH DSA PA-062, CD EXPOSURE-1 48/24 SPAN INDEX, FACE GRAIN NORMAL TO ROOF PURLINS ROOF SHING MAY BE REPLACED BY STRAP CROSS BRACING (REFER TO SHEET S3 FOR DETAILS, AND PROVIDE CROSS BRACING AT OVERHANGS) ALL BOUNDARY, EDGE & FIELD ATTACHMENTS SHALL BE 1" MIN. FROM EDGE OF PLYWOOD & EDGE OF STEEL SUPPORTING MEMBER. REFER TO SCHEDULE BELOW FOR FASTENING.
  - HSS COLUMN 14 GA. 2 1/2"x2 1/2" TYP. SEE 3/S3A
  - 14 GA. FORMED STEEL CEE SEE 5/S3A
  - PURLIN BLOCKING WELD TO ROOF PURLINS PER DETAIL 6/S3A BLOCKING IS ONLY REQUIRED AT PURLINS WITH DIAGONAL BRACING PER (7) ABOVE

**FASTENING SCHEDULE**

NAILING	0.144 PINS SPACING		# 10 SMS SPACING	
	TYPICAL	WITHIN 3' OF BUILDING CORNERS	TYPICAL	WITHIN 3' OF BUILDING CORNERS
BOUNDARY	6" O.C.	6" O.C.	6" O.C.	6" O.C.
EDGE	6" O.C.	6" O.C.	6" O.C.	6" O.C.
FIELD	12" O.C.	6" O.C.	12" O.C.	12" O.C.

ET & F 0.144 PINS PER ICC ESR #4144

- GENERAL NOTES -**
- THE MATERIAL THICKNESS OF STRUCTURAL MEMBER, IN THEIR END-USE, SHALL MEET OR EXCEED THE MINIMUM BASE METAL THICKNESS SPECIFIED IN THE TABLE OR IN THE PLAN. THE MATERIAL GAGE DESIGNATION IN THE PLAN SHALL BE USED AS REFERENCE ONLY.
  - SEE SHEET S5 FOR TYP. SIDE WALL FRAMING.
  - SEE SHEET S5 FOR TYP. END WALL FRAMING.
  - ALL FASTENERS THRU METAL ROOF PANEL SHALL BE INSTALLED W/NEOPRENE WASHERS.

**REVISIONS**

NO	DATE	DESCRIPTION

DATE: 02/25/08  
SCALE: NOTED  
DRAWN BY: DM  
SERIAL NO.:

CUSTOMER:  
12' x 40' RELOCATABLE BUILDINGS  
ROOF FRAMING PLAN & DETAILS (ENCLOSED SOFFIT OPTION)

**AMS**  
American Modular Systems Inc.  
787 Soreckols Ave. Manteca, CA 95336  
(209)825-1921 Fax (209)825-7018  
americanmodular.com

**APPROVALS:**  
THESE DRAWINGS ARE PRELIMINARY AND NOT FOR CONSTRUCTION UNLESS STAMPED & SIGNED BY THE ENGINEER OF RECORD.  
Kenneth A. Luttrell  
No. 4418  
EXP. 3-31-11  
Structural Engineer  
STATE OF CALIFORNIA

IDENTIFICATION STAMP  
DIV. OF THE STATE ARCHITECT  
OFFICE OF REGULATION SERVICES  
C3 118569  
AC FLG S3A  
DATE 9-2-2010

IDENTIFICATION STAMP  
DIV. OF THE STATE ARCHITECT  
OFFICE OF REGULATION SERVICES  
PC 02-109808  
AC FLG S3A  
DATE 4/1/09

PROJECT No.  
**S3A-R**

THESE DRAWINGS AND SPECIFICATIONS ARE THE PROPERTY OF AMERICAN MODULAR SYSTEMS, INC. AND ARE NOT TO BE REPRODUCED, CHANGED OR COPIED IN ANY FORM OR MANNER, NOR ARE THEY TO BE ASSIGNED TO ANY THIRD PARTY WITHOUT THE WRITTEN AUTHORIZATION OF AMERICAN MODULAR SYSTEMS, INC.