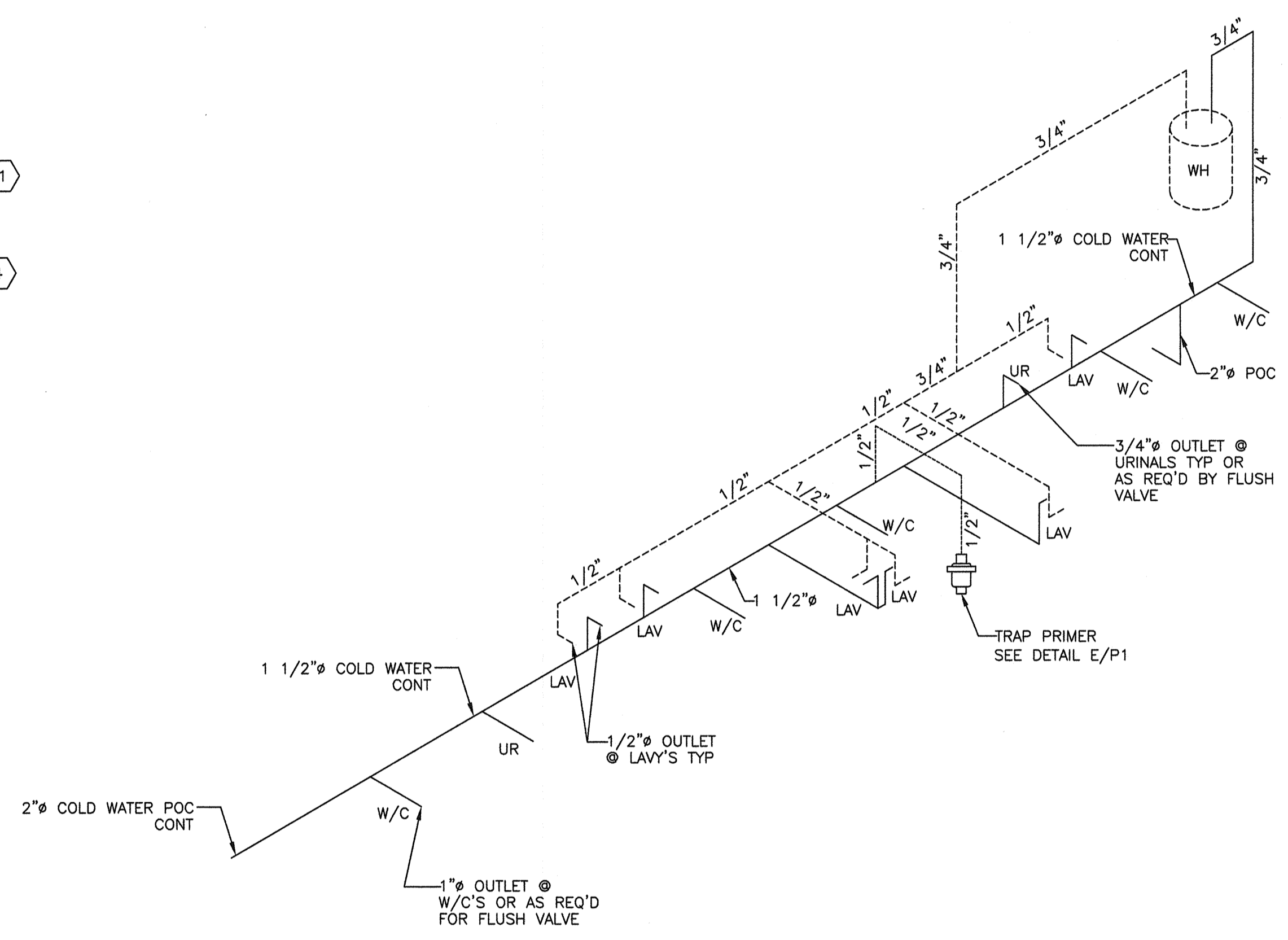
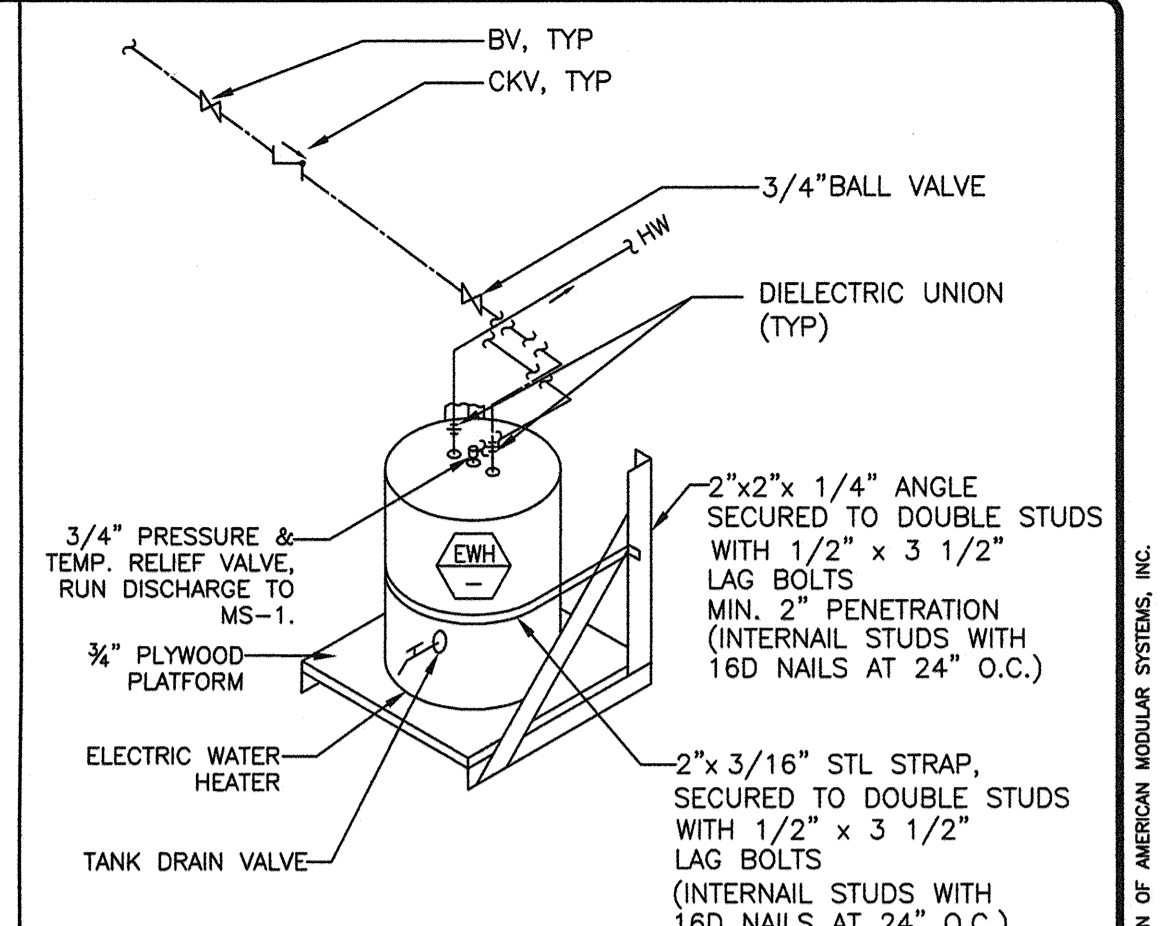
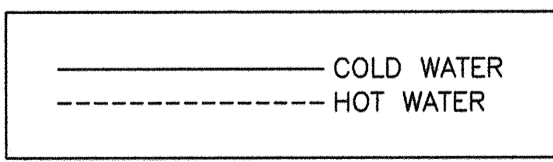


**3C WASTE ISOMETRIC**  
P1 NO SCALE

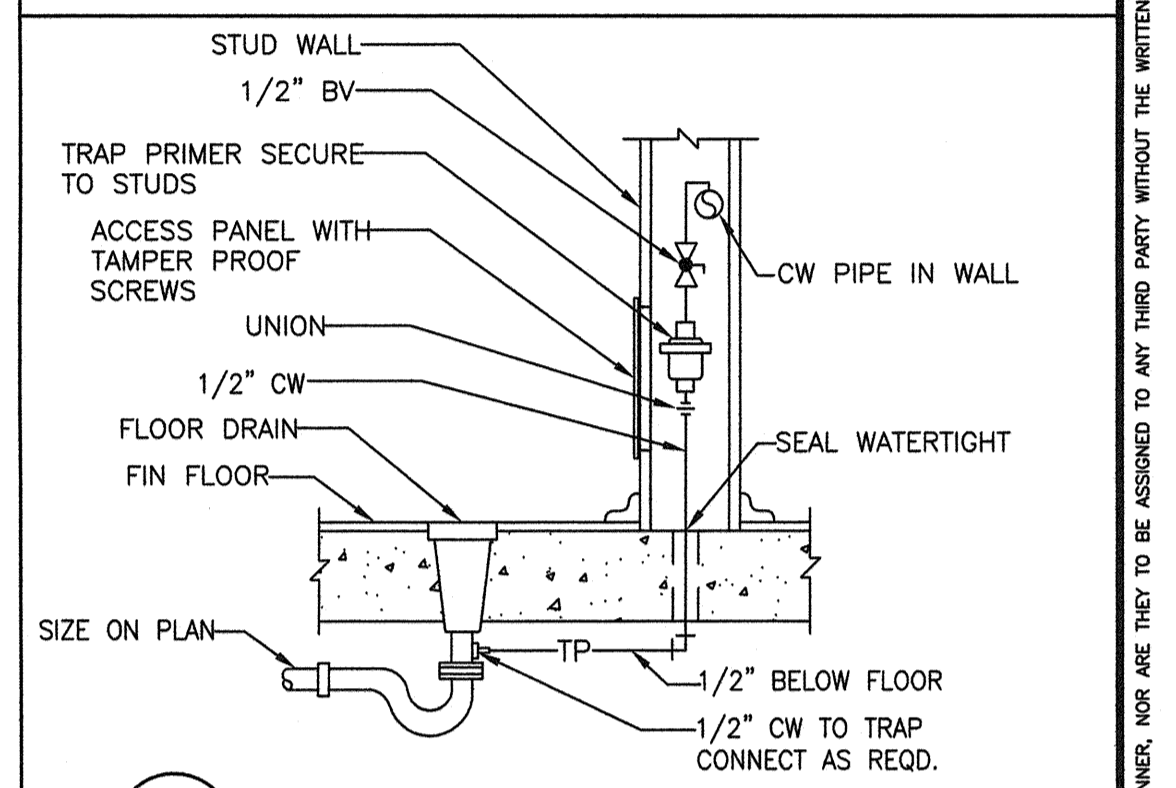


**3B WATER SUPPLY ISOMETRIC**  
P1 NO SCALE

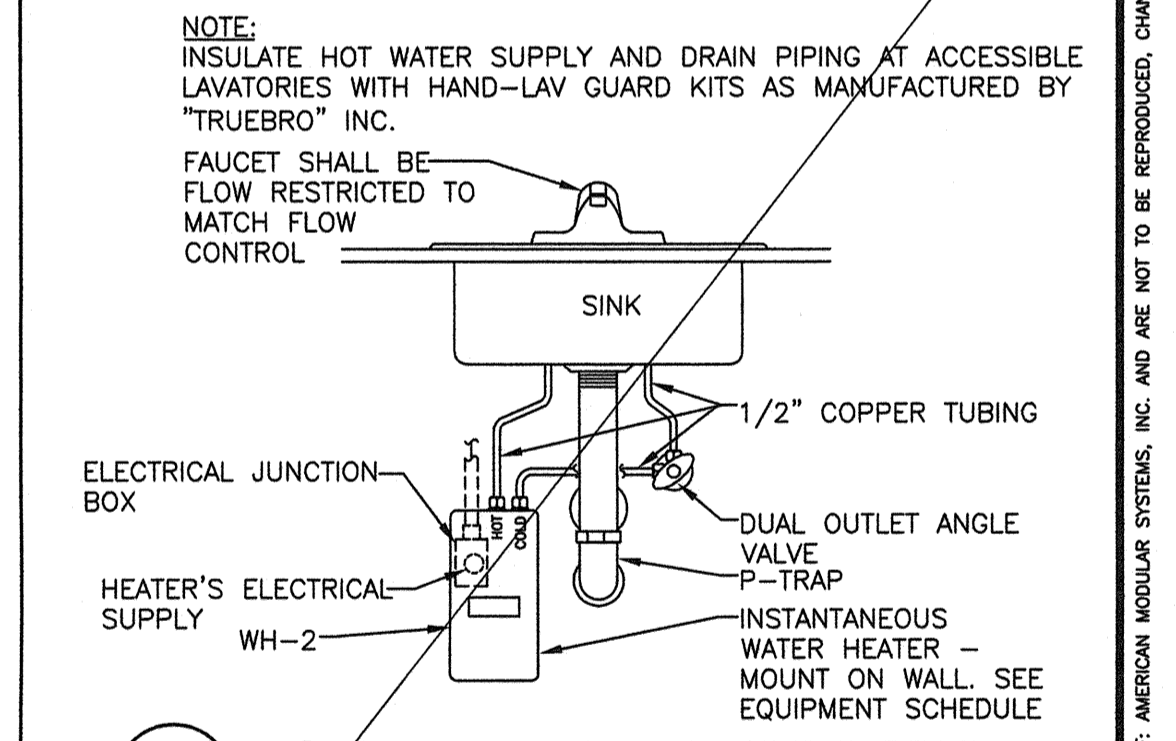
**3A RESTROOM OPTION #3**  
P1 NO SCALE



**D WATER HEATER SUPPORT DETAIL**  
P1 N.T.S



**E TRAP PRIMER DETAIL**  
P1 N.T.S



**F INSTANT WATER HEATER DETAIL**  
P1 N.T.S

**SHEET NOTES**

- DW PIPING SHALL BE ABS PLASTIC
- COLD WATER SUPPLY SHALL BE TYPE L COPPER
- DW PIPING:  
MIN SLOPE 1/4" PER FOOT  
MAY SLOPE 4" O.D. @ 1/8" PER FOOT  
VENTS SHALL TERMINATE NOT LESS THAN 10 FEET FROM OR AT LEAST 3 FT. ABOVE ANY WINDOW, DOOR, AIR INTAKE OR VENT SHAFT, NOR LESS THAN 3FT. IN EVERY DIRECTION FROM ANY LOT LINE; ALLEY AND STREET EXCEPTED; EXTEND 6" ABOVE THE ROOF

REVISIONS		
NO	DATE	DESCRIPTION
1		
2		
3		
4		

DATE: 08/12/10  
SCALE: NOTED  
DRAWN BY: MP  
SERIAL NO.:

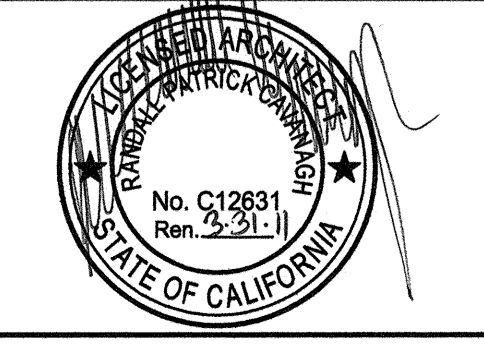
CUSTOMER:  
BAKERSFIELD SCHOOL DISTRICT  
PIONEER ELEMENTARY SCHOOL

12 x 40 RELOCATABLE BUILDING  
ISOMETRIC PLANS & DETAILS

**AMS**  
American Modular Systems Inc.  
787 Spreckels Ave. Manteca, CA 95336  
(209)825-1921 Fax (209)825-7018  
americanmodular.com

APPROVALS:

BASED ON PC# 02-109808



IDENTIFICATION STAMP  
DIV. OF THE STATE ARCHITECT  
OFFICE OF REGULATION SERVICES  
03 118549  
AC [Signature]  
DATE 9-2-2010

IDENTIFICATION STAMP  
DIV. OF THE STATE ARCHITECT  
OFFICE OF REGULATION SERVICES  
AC \_\_\_\_\_ FL \_\_\_\_\_ SS \_\_\_\_\_  
DATE \_\_\_\_\_

PROJECT No.  
**P1-R**

THESE DRAWINGS AND SPECIFICATIONS ARE THE PROPERTY OF AMERICAN MODULAR SYSTEMS, INC. AND ARE NOT TO BE REPRODUCED, CHANGED OR COPIED IN ANY FORM OR MANNER, NOR ARE THEY TO BE ASSIGNED TO ANY THIRD PARTY WITHOUT THE WRITTEN AUTHORIZATION OF AMERICAN MODULAR SYSTEMS, INC.