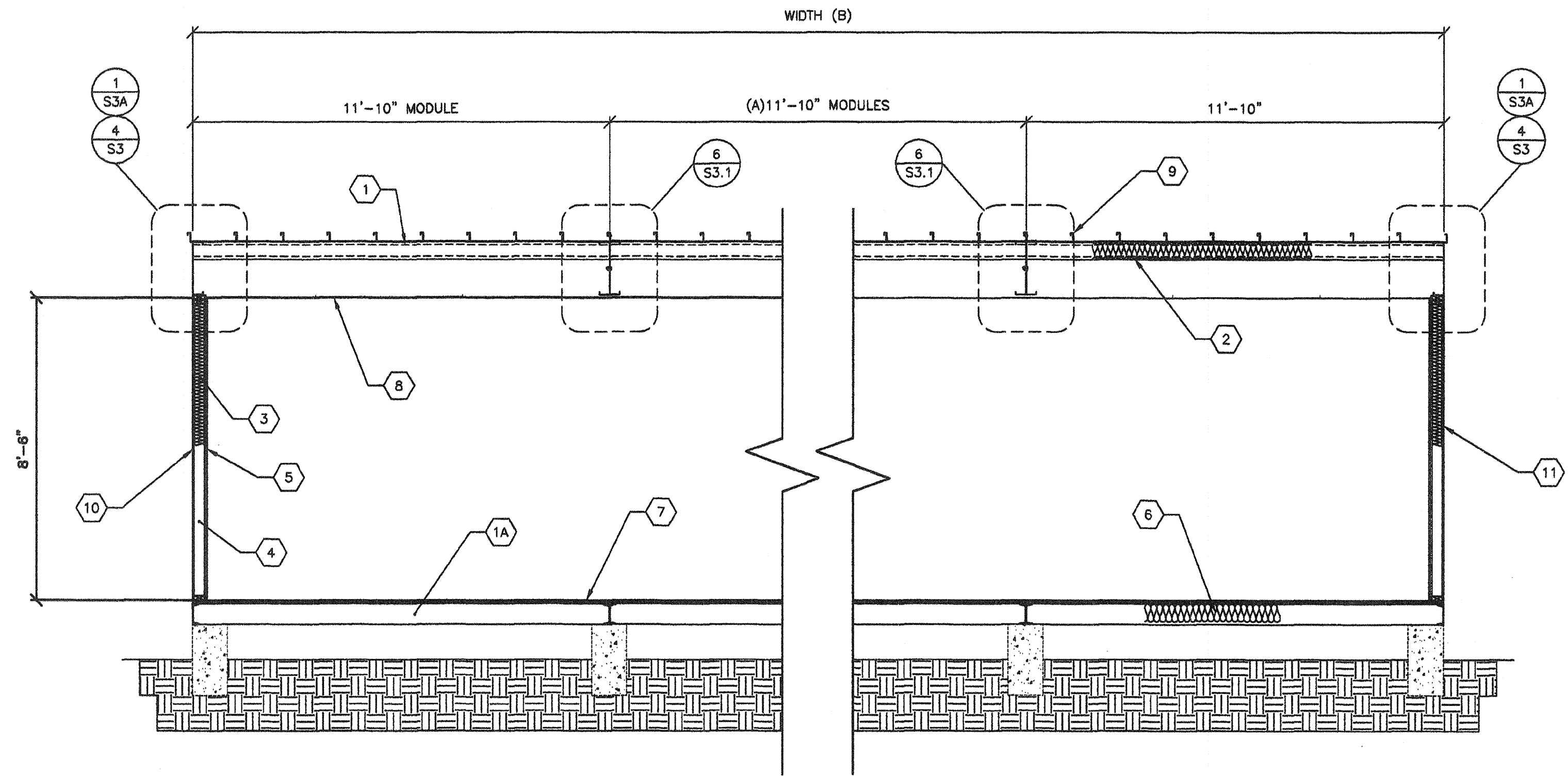


A TYP. LONGITUDINAL SECTION
87 3/8"=1'-0"

- KEY NOTES -**
- 1 "2" PURLINS @ 48" O.C.
 - 1A STEEL "Z" FLOOR JOISTS @ 48" O.C.
 - 2 R-19 INSULATION w/22 GA WIRE @ 16" O.C.
 - 3 INSULATION w/KRAFT PAPER
 - 4 2x STUDS PER ELEV, S5
 - 5 VINYL FABRIC ON RIGID TACKABLE BACKING, 8'-6" PANELS
 - 6 INSULATION w/KRAFT PAPER AND CHICKEN WIRE
 - 7 1/2" PLYWOOD FLOOR SHEATHING FOR ALT SEE SHEET S2, S2A, S2B, S2C
 - 8 SUSPENDED T-BAR CEILING
 - 9 METAL ROOF PANELS SEE ROOF FRAMING PLAN
 - 10 TYPICAL PLYWOOD NAILING .131x2 1/4" GALV @ 6" O.C PANEL EDGES (ALL EDGES BLOCKED), .131x2 1/4" GALV @ 12" O.C FIELD
 - 11 EXTERIOR WALL FINISH PER EXTERIOR ELEVATIONS



B TYP. TRANSVERSE SECTION
87 3/8"=1'-0"

- MODULE SCHEDULE -

| BLDG SIZE (FT) | TOTAL # OF 12' WIDE MODULES | "A" TOTAL # OF CENTER MODULES | "B" TOTAL BLDG WIDTH |
|----------------|-----------------------------|-------------------------------|----------------------|
| 24' x 40' | 2 | 0 | 23'-8 1/4" |
| 36' x 40' | 3 | 1 | 36'-6 1/2" |
| 48' x 40' | 4 | 2 | 47'-4 3/4" |
| 60' x 40' | 5 | 3 | 59'-3" |
| 72' x 40' | 6 | 4 | 71'-1 1/4" |
| 84' x 40' | 7 | 5 | 82'-11 1/2" |
| 96' x 40' | 8 | 6 | 94'-9 3/4" |
| 108' x 40' | 9 | 7 | 106'-8" |
| 120' x 40' | 10 | 8 | 118'-6 1/4" |

REVISIONS

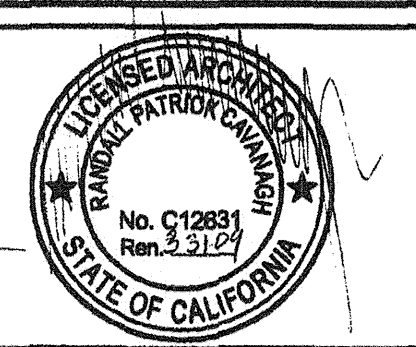
| NO | DATE | DESCRIPTION |
|----|------|-------------|
| | | |
| | | |
| | | |

DATE: 02/05/08
SCALE: NOTED
DRAWN BY: DM
SERIAL NO.:

CUSTOMER:
2:12 PITCHED ROOF 24' x 40' THRU 120' x 40' RELOCATABLE BUILDINGS BUILDING SECTIONS



APPROVALS:
THESE DRAWINGS ARE PRELIMINARY AND NOT FOR CONSTRUCTION UNLESS STAMPED & SIGNED BY THE ENGINEER OF RECORD.



IDENTIFICATION STAMP
NO. 118549
DATE: 9-2-2018

IDENTIFICATION STAMP
NO. PC 02-109695
DATE: 3/23/2009

PROJECT No.
S7-C

THESE DRAWINGS AND SPECIFICATIONS ARE THE PROPERTY OF AMERICAN MODULAR SYSTEMS AND ARE NOT TO BE REPRODUCED, CHANGED OR COPIED IN ANY FORM OR MANNER, NOR ARE THEY TO BE ASSIGNED TO ANY THIRD PARTY WITHOUT THE WRITTEN AUTHORIZATION OF AMERICAN MODULAR SYSTEMS.