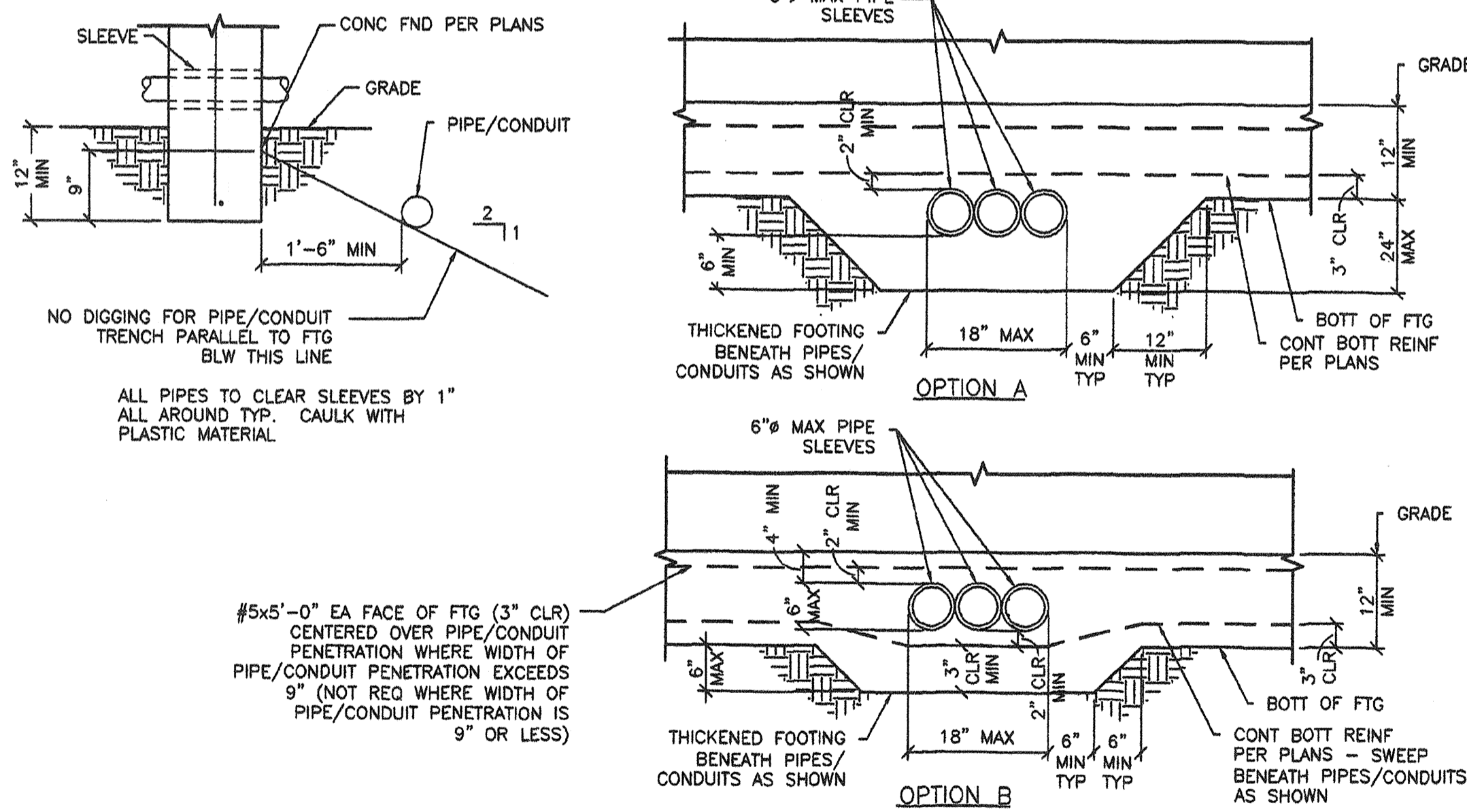
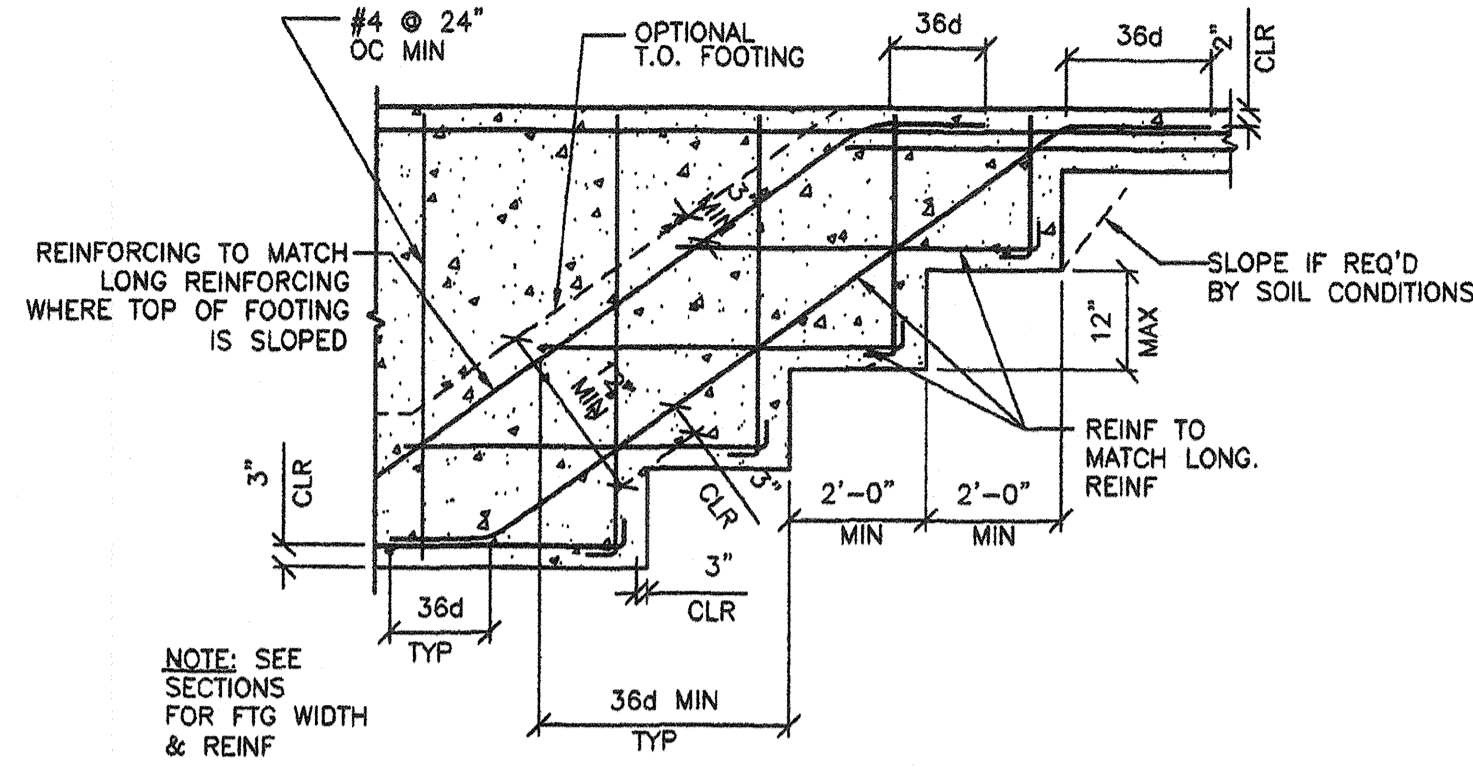


1 OPTIONAL FOUNDATION ACCESS/VENT WELL
S1D 1 1/2\"/>

- NOTES:
- AS AN OPTION TO INDIVIDUAL PIPE SLEEVES THE FOOTING MAY BE BLOCKED OUT FOR MULTIPLE PIPES (8\"/>



2 PIPE SLEEVE DETAIL
S1D 1 1/2\"/>



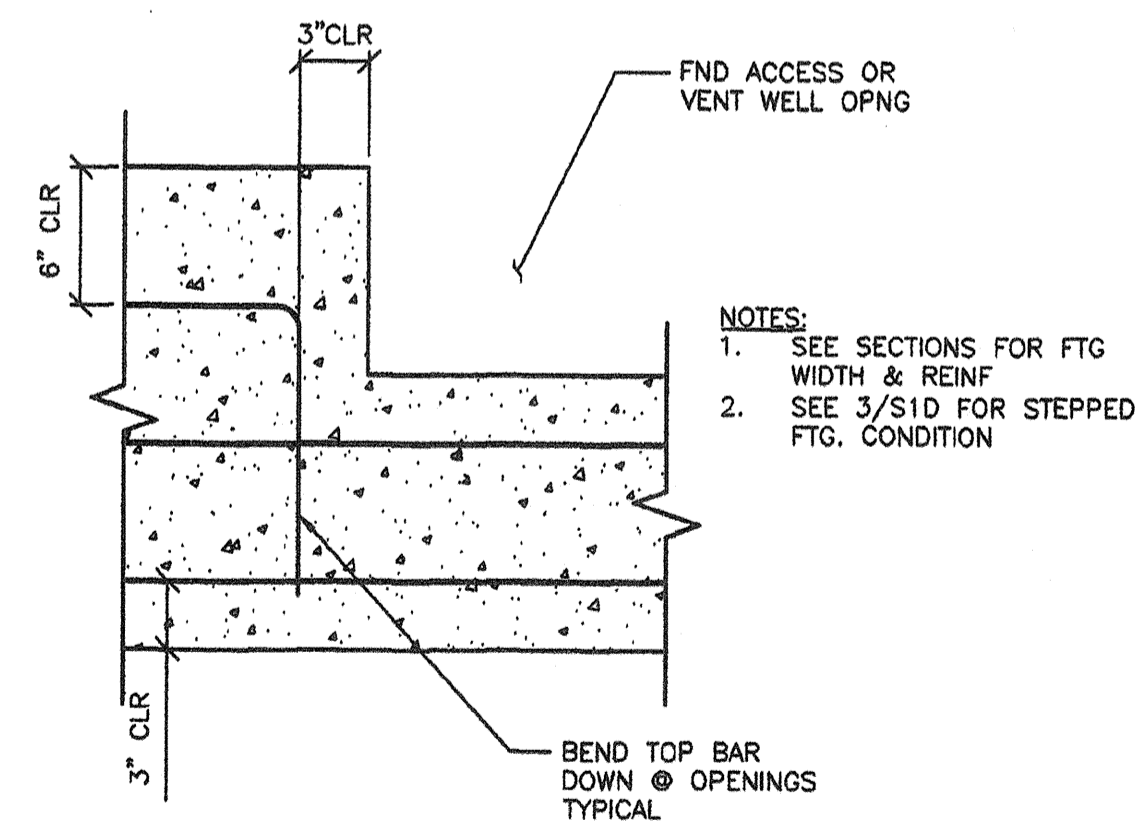
3 TYPICAL STEPPED FOOTING
S1D N.T.S.

CONCRETE ANCHOR SCHEDULE		
FLOOR LOAD	SUBFLOOR	ANCHOR SIZE
50	WOOD	1/2\"/>
50 + 15	WOOD	1/2\"/>
100	WOOD	1/2\"/>
100	CONCRETE	3/4\"/>
150	WOOD	5/8\"/>
150	CONCRETE	3/4\"/> SIMPSON STRONG BOLT REFER TO 4/S1D

ANCHOR TYPE	HILTI KWIK KB-TZ ICC ESR-1917			SIMPSON STRONG-BOLT ICC ESR-1771		
	1/2\"/>	5/8\"/>	3/4\"/>	1/2\"/>	5/8\"/>	3/4\"/>
ANCHOR SIZE (IN)	1/2\"/>	5/8\"/>	3/4\"/>	1/2\"/>	5/8\"/>	3/4\"/>
MIN EMBED (IN)	4\"/>	4 3/4\"/>	5 3/4\"/>	3 7/8\"/>	5 1/8\"/>	5 3/4\"/>
TENSION TEST LBS (SINGLE BOLT)	5121#	7395#	7456#	3826#	6378#	5150#
TENSION TEST LBS (DOUBLE BOLT)	5121#	6174#	5889#	3826#	5102#	4122#
INSTALLATION TORQUE (FT-LB)	40	60	110	50	85	180

- TENSION TEST - 2 x ALLOWABLE TENSION LOAD PER DSA IR 19-1.
- NORMAL WEIGHT CONCRETE WITH $f'_c = 2500$ PSI TO COMPLY WITH 1918A.4 FOR MATERIAL TEST WAIVER.
- MINIMUM EDGE DISTANCE REQUIRED 4 5/8\"/>

4 ANCHOR BOLT SCHEDULE
S1D N.T.S.



5 VENT/ACCESS VENT OPENING DETAIL
S1D 1 1/2\"/>

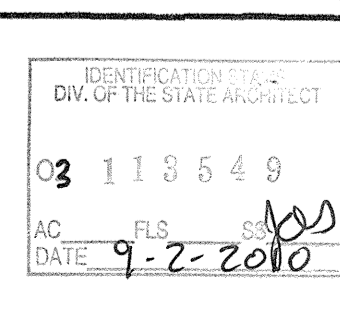
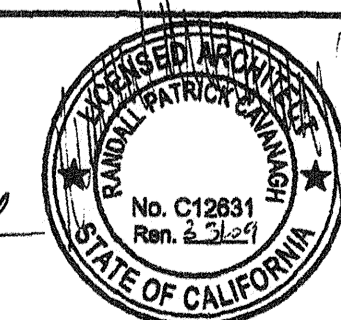
REVISIONS		
NO	DATE	DESCRIPTION

DATE: 11/19/2007
SCALE: NOTED
DRAWN BY: RL
SERIAL NO.:

CUSTOMER:
2:12 PITCHED ROOF 24' x 40' THRU 120' x 40' RELOCATABLE BUILDINGS
CONCRETE FOOTING DETAILS



APPROVALS:
THESE DRAWINGS ARE PRELIMINARY AND NOT FOR CONSTRUCTION UNLESS STAMPED & SIGNED BY THE ENGINEER OF RECORD.



IDENTIFICATION STAMP
DIV. OF THE STATE ARCHITECT
OFFICE OF REGULATION SERVICES
PC 02-108695
AC: FLS SS
DATE: 3/23/2009

PROJECT No.
S1D-C

THESE DRAWINGS AND SPECIFICATIONS ARE THE PROPERTY OF AMERICAN MODULAR SYSTEMS AND ARE NOT TO BE REPRODUCED, CHANGED OR COPIED IN ANY FORM OR MANNER, NOR ARE THEY TO BE ASSIGNED TO ANY THIRD PARTY WITHOUT THE WRITTEN AUTHORIZATION OF AMERICAN MODULAR SYSTEMS.