

**STANDARD ELECTRICAL SYMBOLS**

- EXIT LIGHT WHEN THE OCCUPANT LOAD IS 50 OR MORE
- INCANDESCENT WALL MOUNTED INTERIOR LIGHT FIXTURE
- DUPLEX WALL CONVENIENCE OUTLETS  
⊙ +18" TO CENTER LINE ABOVE F.F. AND 12'-0" MAX TYP. U.O.N.
- FOURPLEX WALL OUTLET  
⊙ +18" TO CENTER LINE U.O.N..
- W.P.GFCI  
WEATHER PROOF GROUND FAULT CIRCUIT INTERRUPT OUTLET
- GFCI  
GROUND FAULT CIRCUIT INTERRUPT OUTLET
- SINGLE POLE LIGHT SWITCHES ⊙ +48",  
HUBBELL PREMIUM, BRYANT HEAVY DUTY,  
OR LEVITON SPECIFICATIONS GRADE.
- ELECTRICAL CROSSOVER J-BOXES ABOVE  
T-BAR CEILING #1-4"x1", #22 4"x2"
- CLOCK/SPEAKER COMBO ⊙ +90"
- SWITCH SUBSCRIPTS - a=DEVICE CONTROLLED.
- JUNCTION BOX - SIZE AND TYPE AS REQUIRED.
- SPEAKER- OUTLET ONLY - 4" SQ. BOX W/ SINGLE  
DEVICE RING AND COVER +84"
- DATA/COMMUNICATION OUTLET ONLY- 4" SQ. BOX W/  
SINGLE DEVICE RING AND COVER +18" U.O.N.  
AND A 3/4" CONDUIT STUB CEILING SPACE.
- INTERCOM TELEPHONE- OUTLET ONLY- 4" SQ. BOX W/  
SINGLE DEVICE RING AND COVER +48" U.O.N.
- MOTION SENSOR OUTLET STUB-UP- PROVIDE (1) 4" SQ. BOX W/  
SINGLE DEVICE RING AND COVER AND ONE 3/4" CONDUIT  
STUB TO ABOVE CEILING (DEVICES BY OTHERS)
- SECURITY/INTRUSION KEY PAD - OUTLET ONLY- 4" SQ.  
BOX W/ SINGLE DEVICE RING AND COVER ⊙ +48"  
AND ONE 3/4" CONDUIT STUB ABOVE CEILING
- DOOR CONTACT - PROVIDE (1) EMPTY 1/2" EMT  
THROUGH DOOR HEADER STUB ABOVE CEILING
- CATV  
CATV OUTLET STUB-UP -PROVIDE (1) 4" SQ. BOX W/  
SINGLE DEVICE RING AND COVER  
AND (1) 3/4" CONDUIT TO ABOVE CEILING (DEVICES BY OTHERS)
- FIRE ALARM PULL STATION - OUTLET ONLY, 4" SQ. BOX W/  
SINGLE DEVICE RING AND COVER +48". (DEVICE N.I.C.)
- FIRE ALARM HORN - OUTLET ONLY - 4" SQ.  
SINGLE GANG J-BOX WITH BLANK WEATHERPROOF COVER  
⊙ +90" MIN (DEVICE N.I.C.)
- FIRE ALARM VISUAL ALARM- OUTLET ONLY - 4" SQ.  
BOX W/ SINGLE DEVICE RING AND COVER +80".  
A.F.F. BUT NO GREATER THAN +96". IF CEILING  
MOUNTED PER NFPA72 TABLE 6-4.4.1(b).
- MINI HORN BOX W/ SINGLE DEVICE RING AND COVER  
⊙ +80"A.F.F. BUT NO GREATER THAN +96".  
STUB TO ATTIC
- THERMOSTAT ⊙ +60" SEALED, +48" A.F.F. UNSEALED
- ULTRASONIC OCCUPANCY SENSOR
- ELECTRICAL PANEL
- EMERG. LIGHTING w/BATTERY BACKUP  
WHEN THE OCCUPANT LOAD IS 50 OR MORE

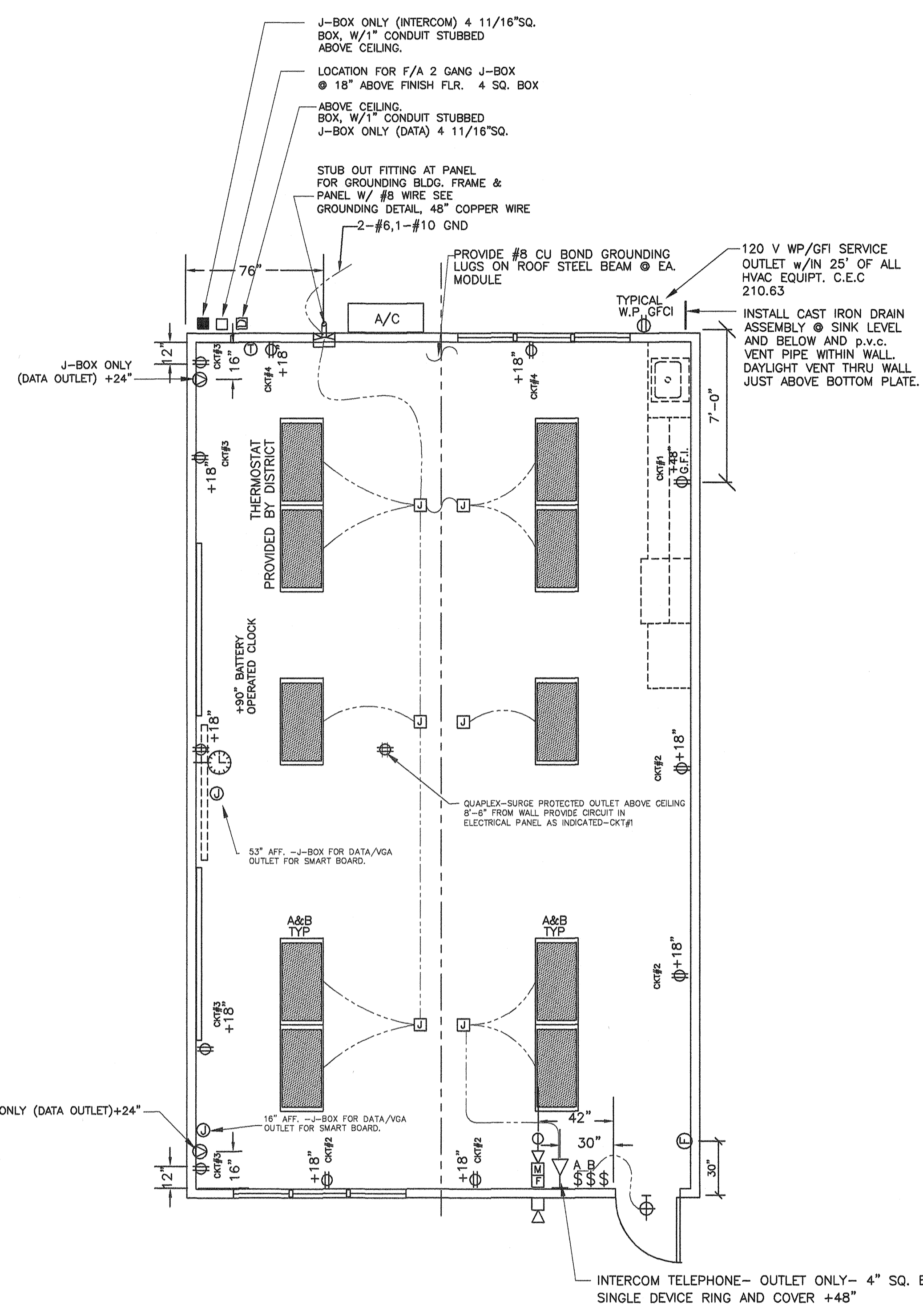
**- GENERAL NOTES -**

- 1.-F.A. : STUB-UP ALL  
FIRE ALARM JUNCTION BOXES  
TO ACCESSIBLE ATTIC SPACE  
WITH 1/2" MIN. GALV. THIN  
WALL TUBING (EMT).  
DO NOT CONNECT FIRE ALARM  
CONDUIT WITH ANY OTHER  
ELECTRICAL CONDUIT
- 2.-IF OPTIONAL DOOR OCCURS A PULL STATION  
J-BOX AND EXIT SIGN ARE REQUIRED.  
PULL STATIONS ARE REQUIRED ⊙ EVERY EXIT
- 3.-STUB OUT LOCATIONS FOR ELECTRICAL  
PANEL, FIRE ALARM, AND DATA BOXES  
SHOWN ARE DIAGRAMMATICAL ONLY.  
EXACT LOCATIONS MAY VARY +/- SEVERAL  
FEET. PLEASE CONTACT AMERICAN MODULAR  
SYSTEMS FOR EXACT LOCATIONS.  
POINT OF CONNECTION WILL BE AT  
FACE OF BUILDING.
- 4.-SEE TYPICAL CLASSROOM LAYOUT  
FOR LOCATIONS OF ALL DEVICES.  
FIXTURE MOUNTING SHALL COMPLY WITH  
CALIFORNIA SEISMIC REGULATIONS.
- 5.-THE LIGHTS FOR EACH ROOM OVER 250' SQ FT  
SHALL BE CONTROLLED BY ULTRASONIC  
OCCUPANCY SENSOR. WATT STOPPER W-500A,  
W-1000A OR W-2000A (OR EQUAL) BASED ON  
THE ROOM SIZE IN CONJUNCTION WITH BI-LEVEL  
SWITCHING.

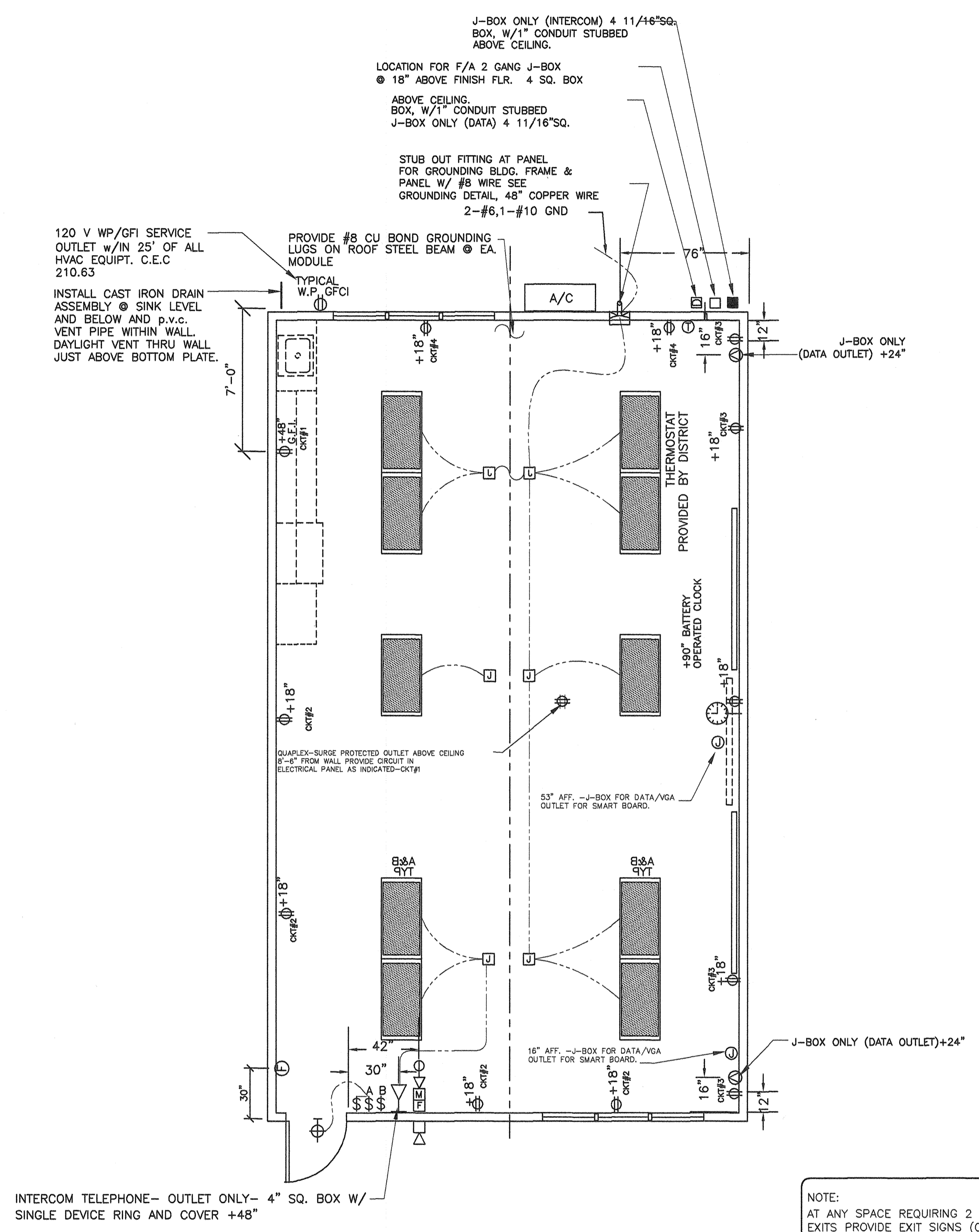
NOTE:  
AT ANY SPACE REQUIRING 2 OR MORE  
EXITS PROVIDE EXIT SIGNS (CBC 1011)  
AND EMERGENCY EXIT ILLUMINATION  
(CBC 1006)

NOTE:  
THE PROJECT ARCHITECT SHALL BE  
RESPONSIBLE FOR THE PLACEMENT OF  
HEAT, SMOKE DETECTORS AND PULL STATIONS  
WHEN THE SITE SPECIFIC PROJECT IS  
REQUIRED TO MEET THE PROVISIONS OF  
SB 575 & CBC 907.2.3

SYMBOL	DESCRIPTION	WATTS	MANUFACTURER
	2'X4' FLOURESCENT DROP IN FIXTURE, ACRYLIC PRISMATIC LENS. T-8 ELECTRONIC BALLASTS (3)32 WATT TUBES, WT. 27 LBS.	SP41 32 W	CRESCENT 24GP40HFS1158YF2 OR LITHONIA 2GT440A12120E5PWS1846LPESCW
	FLOURESCENT SURFACE MOUNTED EXTERIOR LIGHT WITH IMPACT RESISTANT ENCLOSURE. .125 THICK CLEAR PRISMATIC ONE PIECE LENS W/ NEOPRENE GASKET & POSIGRIP STAINLESS STEEL SCREWS. (PROVIDE EMERGENCY BATTERY BACK-UP WHEN THE OCCUPANT LOAD IS 50 OR MORE)	(2) 7W TT 2700 K	ENERTRON 7026B-L OR EQUAL



**1 TYPICAL ELECTRICAL PLAN**  
E1 1/4"=1'-0"



**2 TYPICAL ELECTRICAL PLAN**  
E1 1/4"=1'-0"

BASED ON PC 02-109695

REVISIONS		
NO	DATE	DESCRIPTION

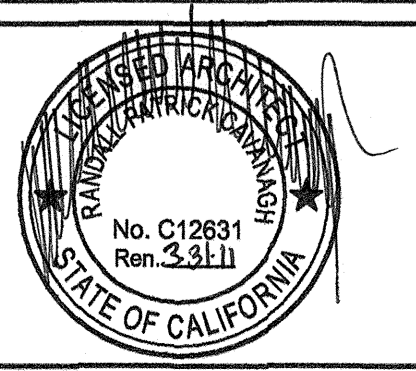
DATE: 08/12/10  
SCALE: NOTED  
DRAWN BY: RS  
SERIAL NO.:

CUSTOMER:  
**BAKERSFIELD CITY SCHOOLS**  
PIONEER DRIVE ELEMENTARY SCHOOL

2:12 PITCHED ROOF 24' x 40' RELOCATABLE BUILDINGS  
**TYPICAL ELECTRICAL PLAN**

American Modular Systems Inc.  
787 Spreckels Ave, Manteca, CA 95336  
(209)825-1921 Fax (209)825-7018  
americanmodular.com

APPROVALS:



IDENTIFICATION STAMP  
DIV. OF THE STATE ARCHITECT  
OFFICE OF REGULATION SERVICES  
03 118568  
DATE: 9-2-2010

IDENTIFICATION STAMP  
DIV. OF THE STATE ARCHITECT  
OFFICE OF REGULATION SERVICES  
AC: FLS: SS  
DATE:

PROJECT NO.  
**E1-C**

THESE DRAWINGS AND SPECIFICATIONS ARE THE PROPERTY OF AMERICAN MODULAR SYSTEMS, INC. AND ARE NOT TO BE REPRODUCED, CHANGED OR COPIED IN ANY FORM OR MANNER, NOR ARE THEY TO BE ASSIGNED TO ANY THIRD PARTY WITHOUT THE WRITTEN AUTHORIZATION OF AMERICAN MODULAR SYSTEMS, INC.