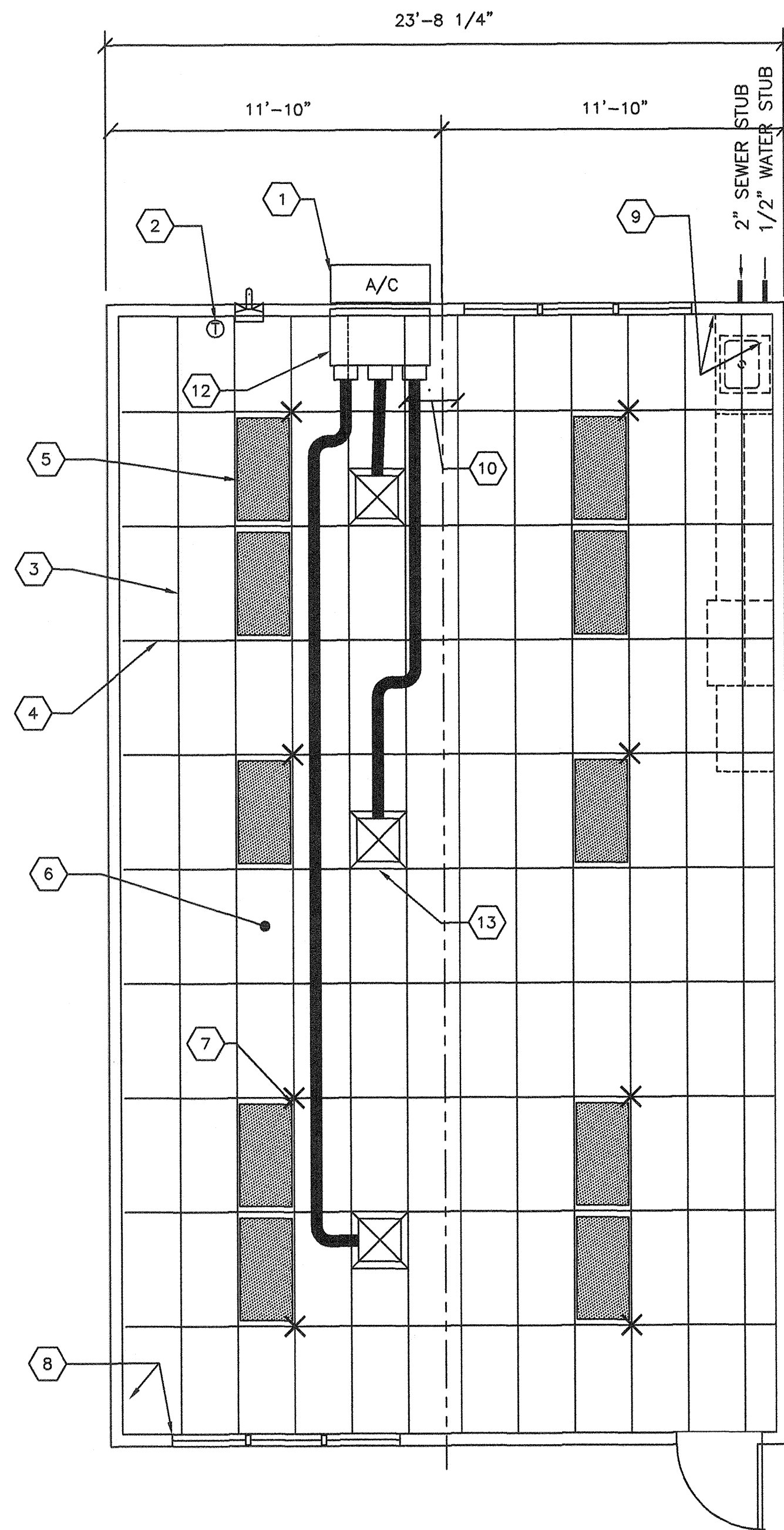


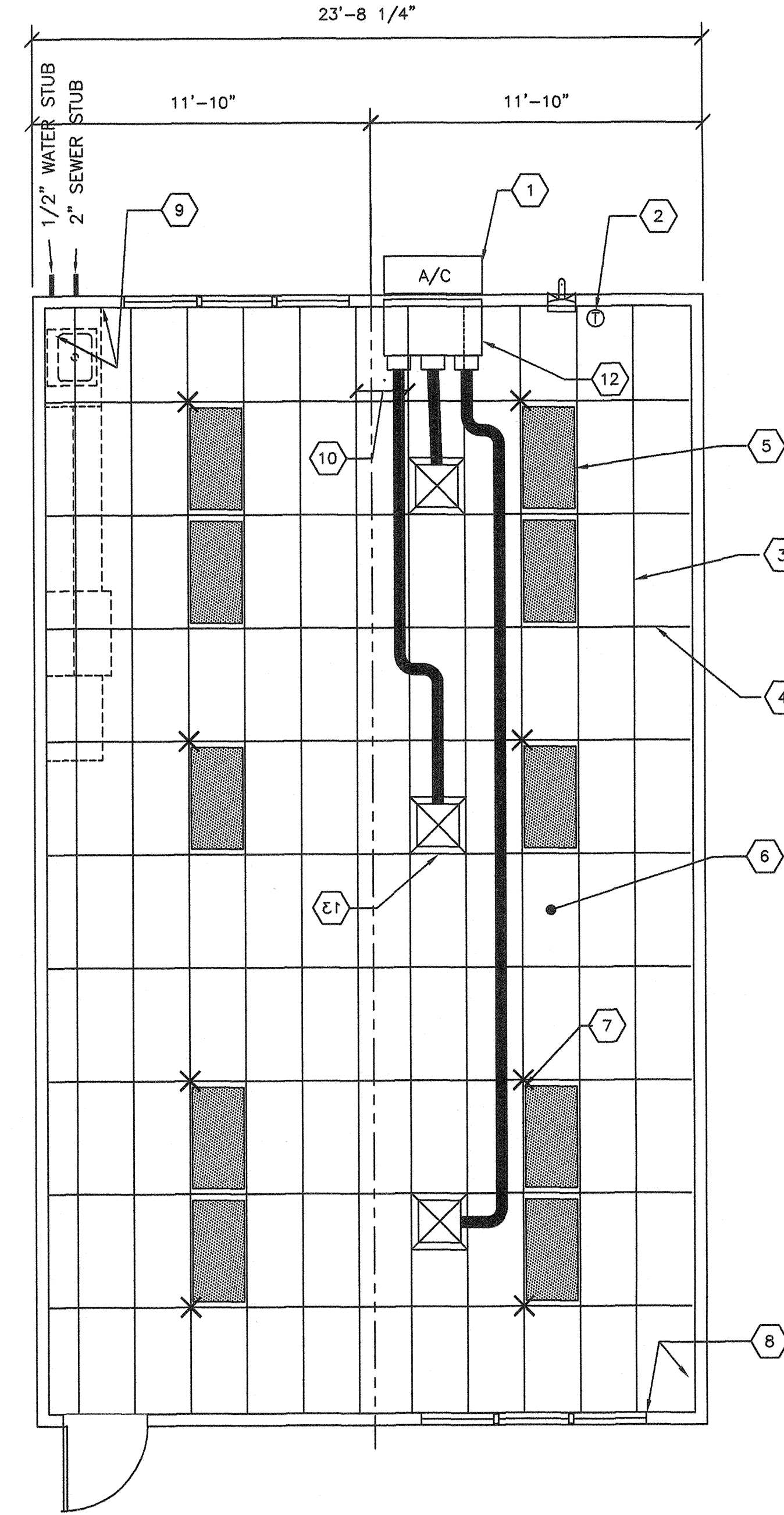
- SHEET NOTES -

- 1 WALL HUNG HVAC UNIT
- 2 THERMOSTAT @ +60" SEALED
- 3 MAIN RUNNER TYP
- 4 CROSS RUNNER TYP
- 5 INTERIOR LIGHT FIXTURE
REFER TO SHEET SHEET E1 FOR SPEC'S
- 6 CEILING HEIGHT @ 8'-6" NOM
- 7 SPLAY WIRE
SEE 4/M2 FOR DETAILS
- 8 FIXED CEILING END
- 9 FREE CEILING END
- 10 CENTER SECTION THAT CROSSES
MODULE LINE TO BE FIELD INSTALLED
- 11 NOT USED
- 12 CONCEALED SUPPLY AIR DUCT
ABOVE T-BAR CEILING
- 13 TYPICAL 4-WAY SUPPLY AIR REGISTER
LOCATION AND SIZE MAY VARY PER
CEILING LAYOUT AND BUILDING SIZE

NOTE:
WHERE TWO OR MORE HVAC UNITS SERVE A COMMON SPACE, UNITS SHALL BE EQUIPPED WITH DUCT SMOKE DETECTOR FOR AUTO SHUTDOWN. INTERCONNECT WITH FIRE ALARM SYSTEM
AUTOMATIC SHUT-OFF IS NOT REQUIRED WHEN ALL OCCUPIED ROOMS SERVED BY THE AIR HANDLING EQUIPMENT HAVE DIRECT ACCESS TO THE EXTERIOR AND THE TRAVEL DISTANCE DO NOT EXCEEDS 100 FT. PER CMC 609 EXCEPTION #2



1 TYPICAL REFLECTED CEILING PLAN
M1 1/4"=1'-0"



2 TYPICAL REFLECTED CEILING PLAN
M1 1/4"=1'-0"

BASED ON PC 02-109695

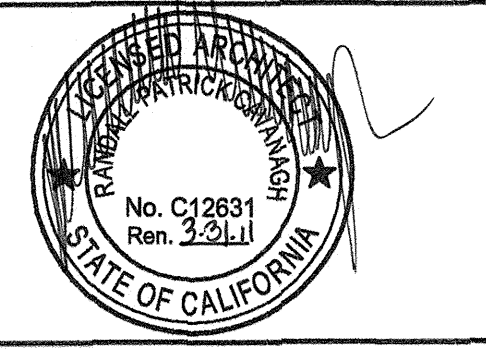
REVISIONS		
NO	DATE	DESCRIPTION

DATE: 08/12/10
SCALE: NOTED
DRAWN BY: RS
SERIAL NO.:

CUSTOMER: BAKERSFIELD CITY SCHOOLS
24' x 40' RELOCATABLE BUILDINGS
TYPICAL REFLECTED CEILING PLAN

AMS
American Modular Systems Inc.
787 Spreckels Ave. Manteca, CA 95336
(209)825-1921 Fax (209)825-7018
americanmodular.com

APPROVALS:



IDENTIFICATION STAMP
DIV. OF THE STATE ARCHITECT
OFFICE OF REGULATION SERVICES
AC. FLS. SS.
DATE: 9-2-2010

PROJECT No. PC
M1-C

THESE DRAWINGS AND SPECIFICATIONS ARE THE PROPERTY OF AMERICAN MODULAR SYSTEMS, INC. AND ARE NOT TO BE REPRODUCED, CHANGED OR COPIED IN ANY FORM OR MANNER, NOR ARE THEY TO BE ASSIGNED TO ANY THIRD PARTY WITHOUT THE WRITTEN AUTHORIZATION OF AMERICAN MODULAR SYSTEMS, INC.