

PULL BOX SCHEDULE

DESIGNATOR	SIZE	REMARKS
P1	N48	POWER, SPARE
P2	N44	POWER, SPARE
P3	R33	POWER, SPARE
P4	N36	POWER, SPARE
P5	N36	POWER, SPARE
P6	N36	POWER, SPARE
P7	N36	POWER, SPARE
P8	N30	POWER, SPARE
P9	N30	POWER, SPARE
P10	N30	POWER, SPARE
P11	N30	POWER, SPARE
P11	N30	POWER, SPARE
C1	N36	DATA/TEL/TV/SPARE
C2	N36	DATA/TEL/TV/SPARE
C3	N36	DATA/TEL/TV/SPARE
C4	N36	DATA/TEL/TV/SPARE
S1	N36	PA/FA/IA
S2	N36	PA/FA/IA
S3	N36	PA/FA/IA
S4	N36	PA/FA/IA

NOTES:

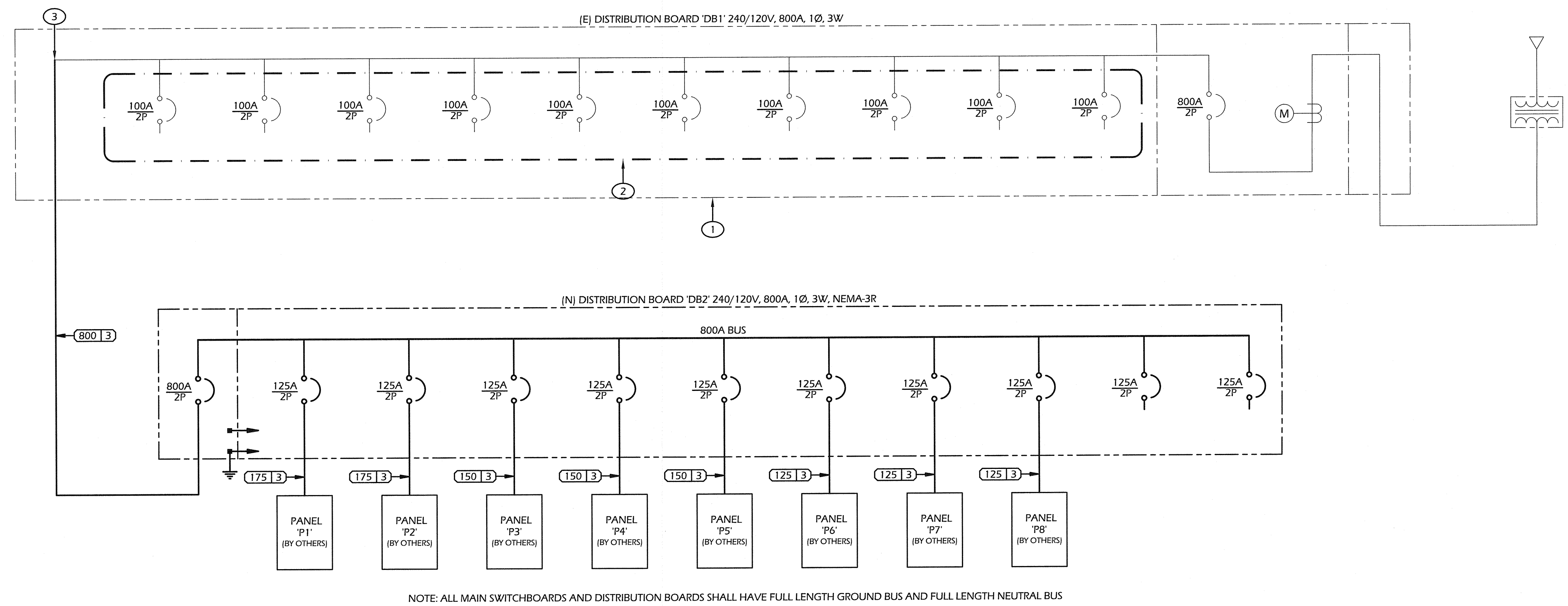
- ALL PULL BOXES SHALL BE EITHER BROOKS, CHRISTY, OR EQUIVALENT.
- ALL PULL BOXES SHALL BE PROVIDED WITH EXTENSION RINGS AND BOLT DOWN COVERS AS REQUIRED TO SUIT THE APPLICATION. VERIFY PULL BOX LOCATIONS REQUIRING FULL TRAFFIC COVERS WITH THE ARCHITECT AND CIVIL ENGINEER.
- LABEL PULL BOXES 'ELECTRICAL', 'SIGNAL' OR 'COMMUNICATIONS' AS REQUIRED.

SHEET NOTES

- PROVIDE AND APPLY THIS BOARD PROVIDES 540A TO DISTRIBUTION BOARD DB2 LABEL ON BOARD.
- DISCONNECT AND REMOVE ALL CIRCUIT BREAKERS WITHIN THIS BOARD.
- BUS TAP EXISTING BUS.

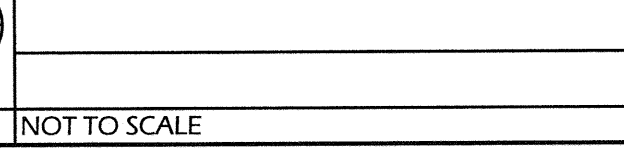
FEEDER SCHEDULE

DESIG.	CONDUIT & CONDUCTOR SIZES & QUANTITIES
(125) 3	2" C. - (3) #1 & (1) #6 GND.
(150) 3	2" C. - (3) #1/0 & (1) #6 GND.
(175) 3	2" C. - (3) #2/0 & (1) #6 GND.
(800) 3	3 [4" C. - (3) #750KCMIL & (1) #2/0 GND.]



NOTE: ALL MAIN SWITCHBOARDS AND DISTRIBUTION BOARDS SHALL HAVE FULL LENGTH GROUND BUS AND FULL LENGTH NEUTRAL BUS

SINGLE LINE DIAGRAM



DUCT BANK SCHEDULE

#	POWER		COMMUNICATION					SIGNAL		#	POWER		COMMUNICATION					SIGNAL	
	POWER	SPARE	DATA	TELEPHONE	CATV	PA	SPARE	FIRE ALARM	SIGNAL		POWER	SPARE	DATA	TELEPHONE	CATV	PA	SPARE	FIRE ALARM	SIGNAL
1	(3) 4"	-	-	-	-	-	-	-	-	16	(5) 1-1/2"	-	(1) 2"	(1) 2"	(1) 2"	(1) 2"	(1) 2"	(1) 2"	(1) 2"
2	(3) 4"	-	-	-	-	-	-	-	-	17	(1) 1-1/2"	-	(1) 2"	(1) 2"	(1) 2"	(1) 2"	(1) 2"	(1) 2"	(1) 2"
3	(3) 4"	-	-	-	-	-	-	-	-	18	(4) 1-1/2"	-	-	-	-	-	-	-	-
4	-	(1) 1-1/2"	-	-	-	-	-	-	-	19	(1) 1-1/2"	-	-	-	-	-	-	-	-
5	(3) 4"	(1) 1-1/2"	-	-	-	-	-	-	-	20	(3) 1-1/2"	-	-	-	-	-	-	-	-
6	-	(1) 1-1/2"	-	-	-	-	-	-	-	21	(1) 1-1/2"	-	-	-	-	-	-	-	-
7	(3) 4"	(2) 1-1/2"	-	-	-	-	-	-	-	22	(2) 1-1/2"	-	-	-	-	-	-	-	-
8	-	-	(1) 2"	(1) 2"	(1) 2"	(1) 2"	(1) 2"	(1) 2"	(1) 2"	23	(1) 1-1/2"	-	-	-	-	-	-	-	-
9	(3) 4"	-	(1) 2"	(1) 2"	(1) 2"	(1) 2"	(1) 2"	(1) 2"	(1) 2"	24	(1) 1-1/2"	-	-	-	-	-	-	-	-
10	(7) 1-1/2"	(3) 4"	-	-	-	-	-	-	-	25	(1) 1-1/2"	-	-	-	-	-	-	-	-
11	(7) 1-1/2"	-	(1) 2"	(1) 2"	(1) 2"	(1) 2"	(1) 2"	(1) 2"	(1) 2"	26	-	-	(1) 2"	(1) 2"	(1) 2"	(1) 2"	(1) 2"	(1) 2"	(1) 2"
12	(1) 1-1/2"	-	-	-	-	-	-	-	-	27	-	-	(1) 2"	(1) 2"	(1) 2"	(1) 2"	(1) 2"	(1) 2"	(1) 2"
13	(6) 1-1/2"	-	(1) 2"	(1) 2"	(1) 2"	(1) 2"	(1) 2"	(1) 2"	(1) 2"	28	-	-	(1) 2"	(1) 2"	(1) 2"	(1) 2"	(1) 2"	(1) 2"	(1) 2"
14	(6) 1-1/2"	-	(1) 2"	(1) 2"	(1) 2"	(1) 2"	(1) 2"	(1) 2"	(1) 2"	29	-	-	(1) 2"	(1) 2"	(1) 2"	(1) 2"	(1) 2"	(1) 2"	(1) 2"
15	(1) 1-1/2"	-	-	-	-	-	-	-	-	-	-	-	-	-	-	-	-	-	-

Ownership of Documents
This document, the ideas and designs incorporated herein, as an instrument of Professional Service is the property of Integrated Designs by SOMAM Inc. and is not to be used, in whole or in part for any other project without written authorization.
© COPYRIGHT 2010

integrated designs by SOMAM, Inc.
ARCHITECTURE • ENGINEERING • INTERIOR DESIGN • CONSTRUCTION MANAGEMENT
8011 N. Fresno, Suite 130 - Fresno, California 93710
Phone (559) 436-0887 Fax (559) 436-0887 E-Mail: design@somam.com
www.integrateddesigns.com

Rev. Date: _____
Rev. Date: _____
Rev. Date: _____
Revision Description: _____
Revision Description: _____
Revision Description: _____

Sheet Title: **SINGLE LINE DIAGRAM, DUCT BANK, AND PULLBOX SCHEDULES**

Project Name & Address: **PIONEER DRIVE ELEMENTARY SCHOOL 5 PERMANENT MODULAR CLASSROOMS**
BAKERSFIELD CITY SCHOOL DISTRICT
4404 PIONEER DRIVE, BAKERSFIELD, CA 93306

Date: _____
Designer: _____
DRC: _____
PC: _____

DSA Identification Stamp:
FILE # : 15-6
IDENTIFICATION STAMP
DIV. OF THE STATE ARCHITECT
OFFICE OF REGULATION SERVICES
AC: [Signature] SS: [Signature]
DATE: 9-2-2010
TRACKING # : -

Stamp(s):

Job No.: **3862**

Sheet No.: **E1.2**

Release: _____

BORRELLI
AND ASSOCIATES, INC.
CONSULTING ELECTRICAL ENGINEERS
1900 N. ECHO AVENUE
FRESNO, CALIFORNIA 93704
PH: 559-238-4188 FAX: 559-238-4554
841# 18127
HTTP://WWW.BORRELLIENGINEERING.COM
E-MAIL: ADMIN@BORRELLIENGINEERING.COM