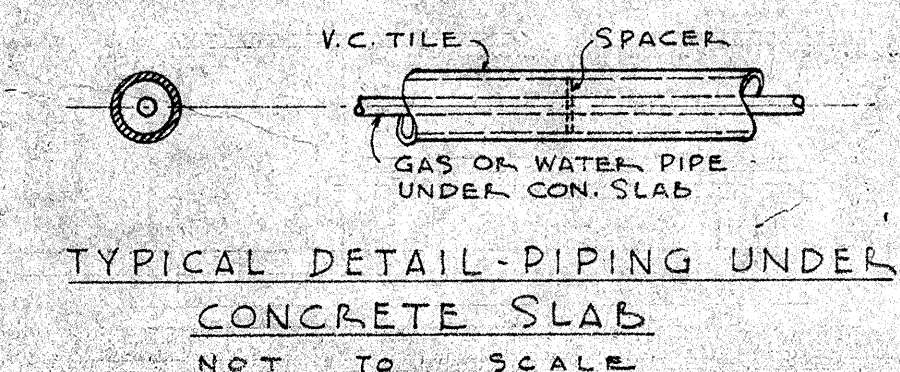
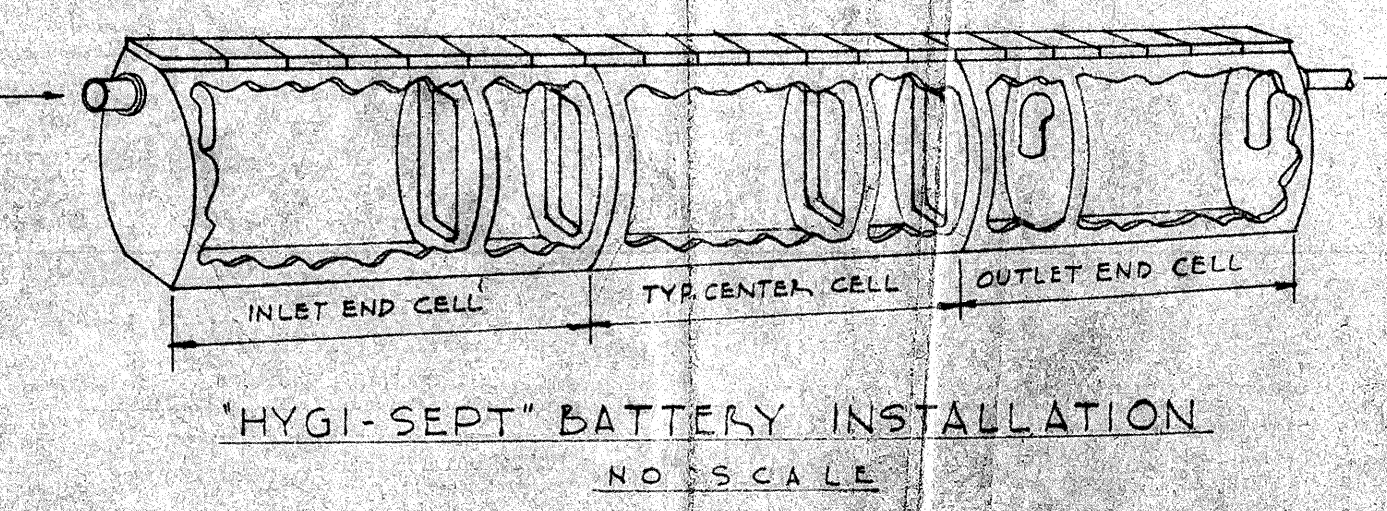
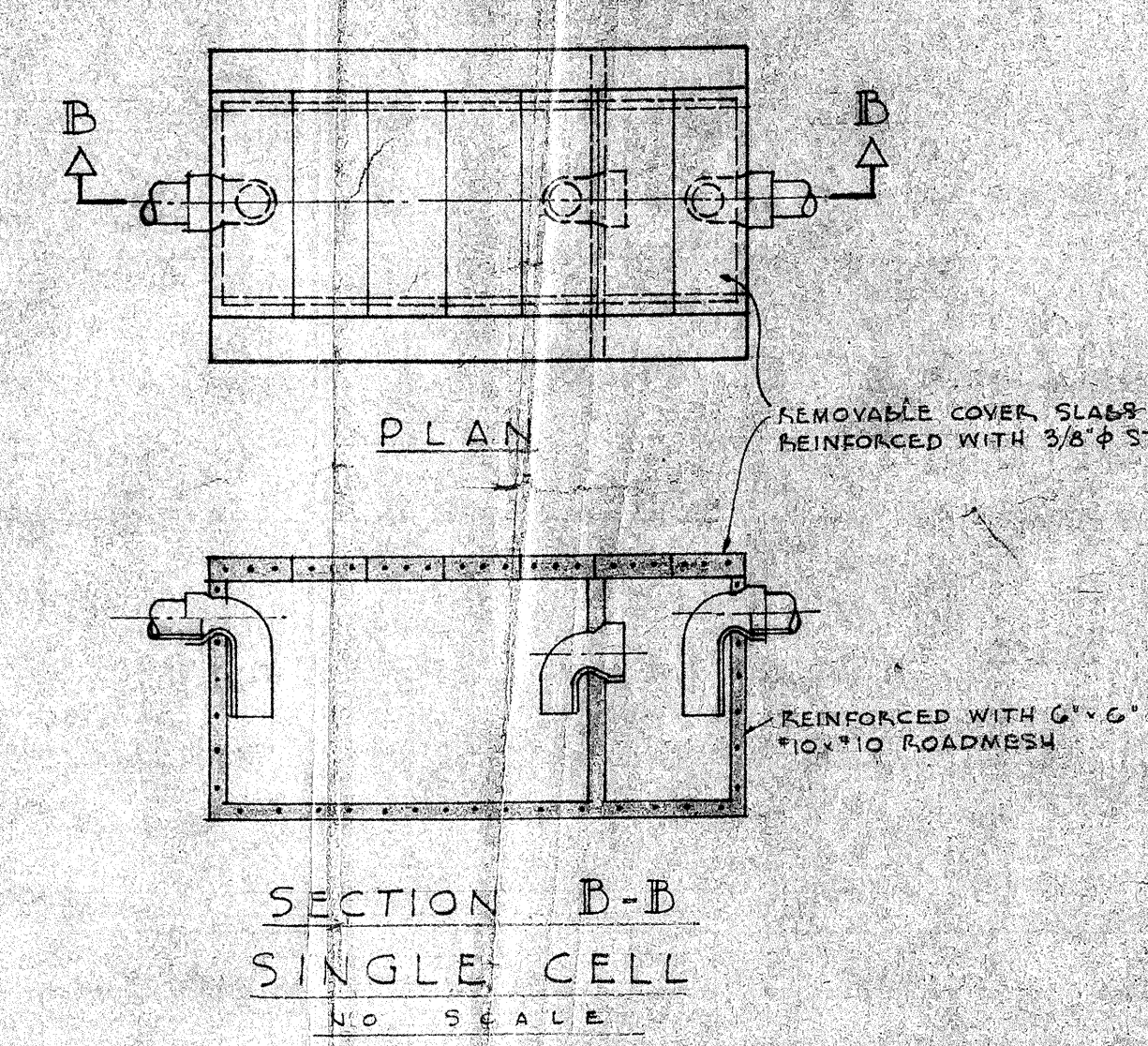
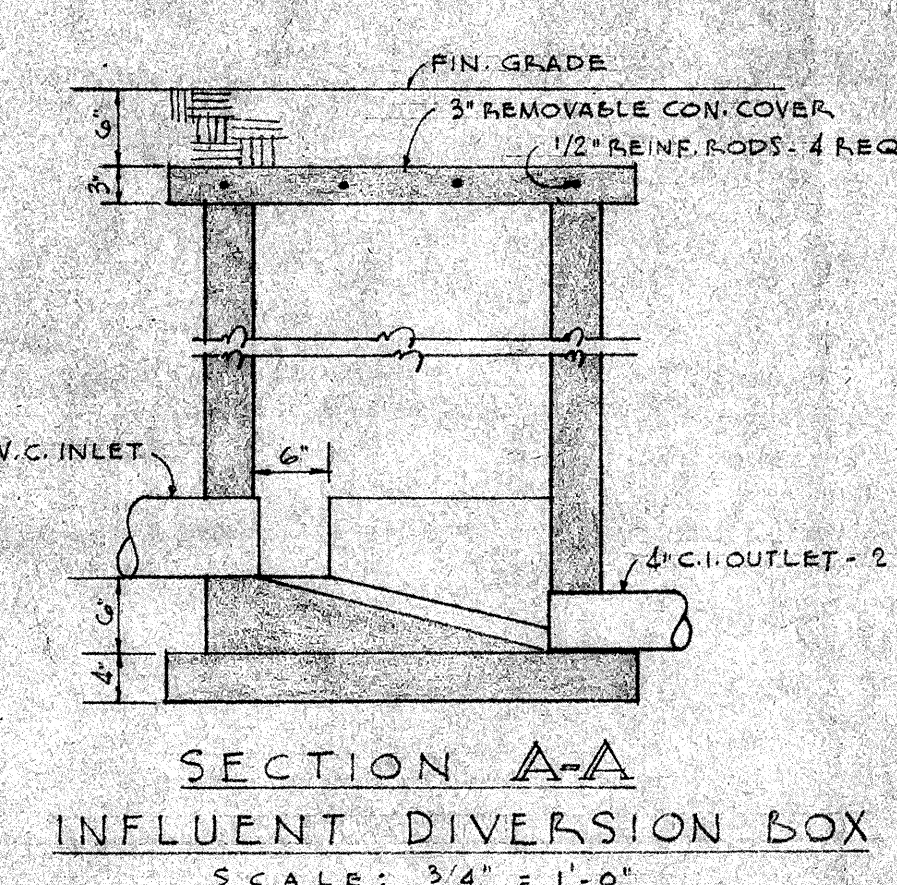
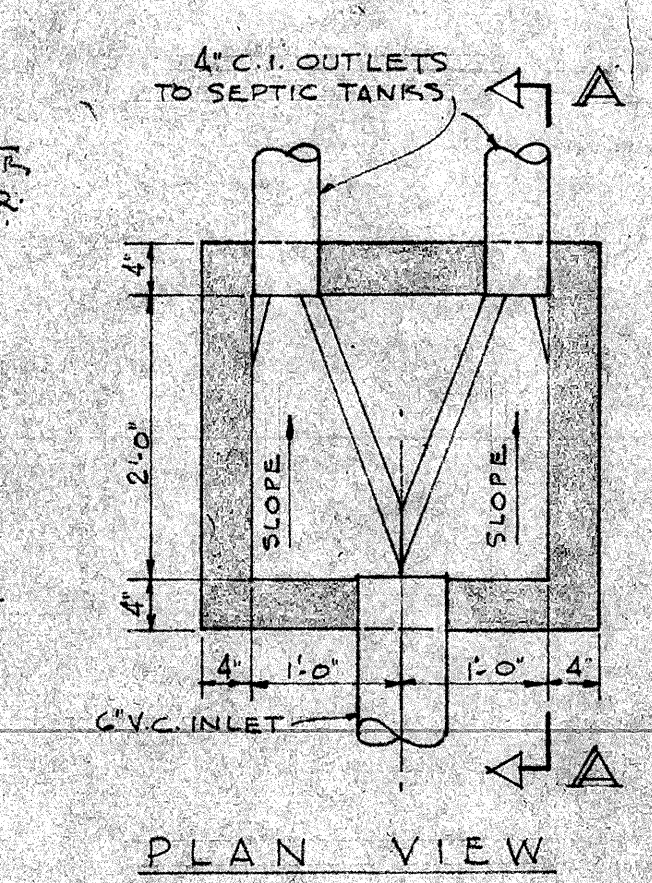
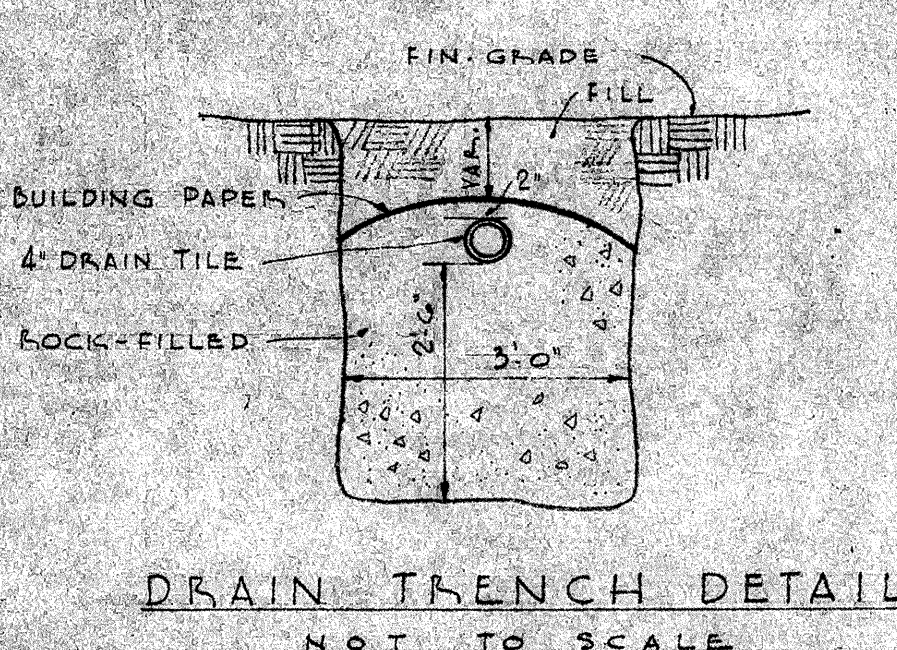
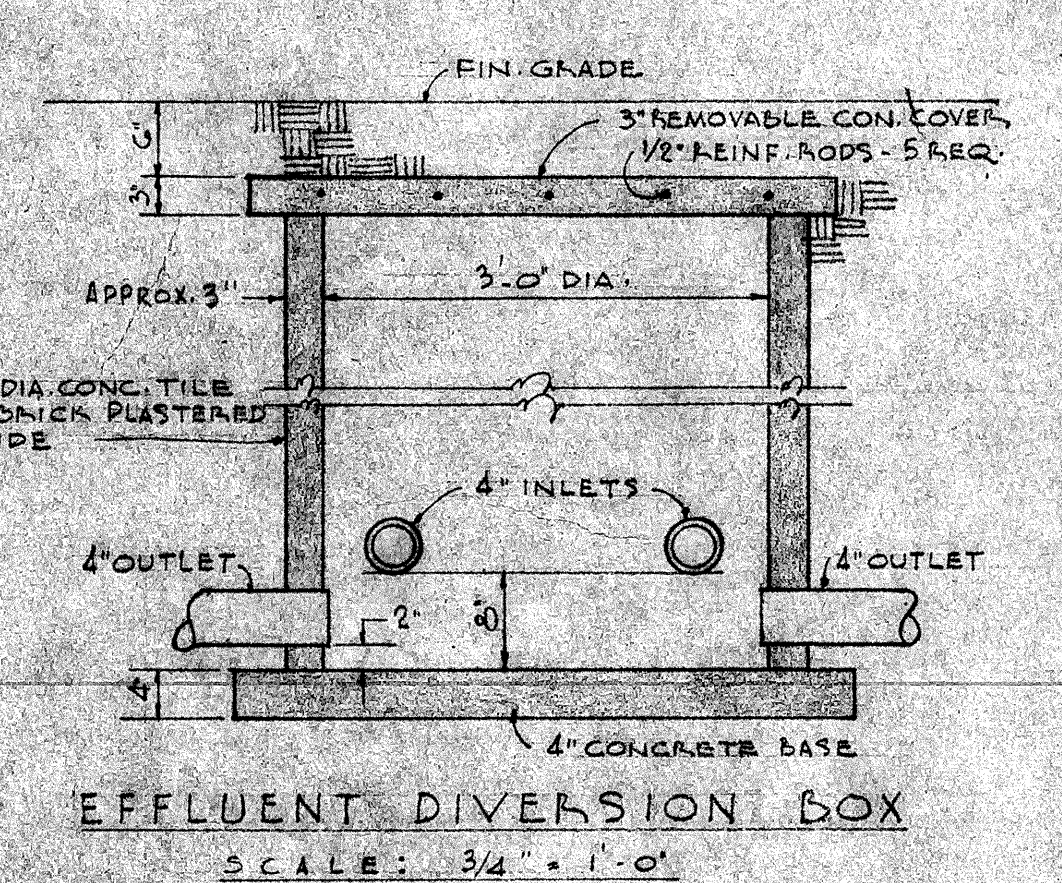


FLOOR PLAN
SCALE: 1/8" = 1'-0"



LEGEND

- C.W. COLD WATER
- H.W. HOT WATER
- G. GAS
- S.O.W.P. SOIL OR WASTE PIPE
- V.O.V.O.F. VENT OR VENT OFFSET
- V.T.R. VENT TROUGH ROOF
- C.I. CAST IRON
- V.C. VITRIFIED CLAY

SCHEDULE OF PLUMBING FIXTURE CONNECTIONS							
FIXTURE	ABBREV.	SOIL OR WASTE	TRAP	VENT	H.W.	C.W.	REMARKS
LAVATORY	L.A.V.	2"	1 1/2"	1 1/2"		1/2"	
WATER CLOSET (FLUSH)	W.C.	4"	INT.	2" OR 4"		1/2"	1" FLUSH VALVE
WATER CLOSET (TANK)	W.C.	4"	INT.	2" OR 4"		1/2"	
URINAL	U.	2"	2"	1 1/2"		1/2"	3/4" FLUSH VALVE
SERVICE SINK	S.S.	2"	2"	2"		3/4"	
SINK (KITCHEN TYPE)	SK.	2"	1 1/2"	1 1/2"		1/2"	
DRINKING FOUNTAIN	D.F.	2"	1 1/2"	1 1/2"		1/2"	
SHOWER	SH.	2"	2"	2"	1/2"	1/2"	WASTE TO 2" SH. DRAIN
HOSE BIBB	H.B.					3/4"	
FIRE HOSE CABINET	F.H.C.					2"	1 1/2" ANGLE ROSE VALVE
FLOOR DRAIN	F.D.	2"	2"	2"			3" WASTE IN KITCHEN
FLOOR SINK	F.S.	3"	2"				
DISHWASHER	D.W.	2"				3/4"	1/2" GAS
RINSE SINK	R.S.	3"	1 1/2"			1/2"	1/2"
DEEP SINK	D.S.	3"	2"			3/4"	3/4"
SCULLERY SINK	S.S.	3"				3/4"	3/4"

FORCED AIR HEATING UNITS								
NO.	NO. REQ.	BTU / HR. OUTPUT	FLUE SIZE	GAS CONN. MIN. DIA.	FAN RPM.	CFM.	MOTOR HP	REMARKS
(A)	14	64,800	5"	3/4"	10 3/8"	535	0.00	1/4 JANITROL FAC 90-14
(B)	2	108,000	7"	3/4"	2 3/8"	510	1.50	1/3 JANITROL FAC 150-14
(C)	2	129,600	7"	1"	2 3/8"	520	1.50	1/3 JANITROL FAC 150-14
(D)	1	53,950	5"	3/4"	10 3/8"	1040	0.95	1/3 JANITROL UAC 65-14

PANEL FEATHERS				
NO.	NO. REQ.	BTU / HR. INPUT	FLUE GAS. SIZE CONN.	REMARKS
(E)	1	10,000	2 1/2" DIA	1/2" DAY/NIGHT 10 WP
(F)	1	30,000	3" DIA	3/4" 50 WP
(G)	1	30,000	3" DIA	3/4" 10-20 WP
(H)	1	40,000	3" DIA	3/4" 20-20 WP

HILBURG, BYLER & HENGSTLER
MECHANICAL AND ELECTRICAL ENGINEERS
257 SOUTH SPRING STREET
LOS ANGELES 2, CALIFORNIA

STATE OF CALIFORNIA
DEPARTMENT OF PUBLIC WORKS
DIVISION OF ARCHITECTURE
APPROVED: Ernest L. McCoy
7-22-48

BAKERSFIELD CITY SCHOOLS
1600 K. ST. BAKERSFIELD CALIF.
BOARD OF EDUCATION
APPROVED: Ernest L. McCoy
7/20 1948
PRESIDENT
SECRETARY

MECHANICAL
ELEMENTARY SCHOOL
BAKERSFIELD CITY SCHOOL DISTRICT
PIONEER DRIVE
BAKERSFIELD CALIFORNIA
ERNEST L. MCCOY AIA
ARCHITECT
1612 10th ST.
BAKERSFIELD CALIFORNIA

DATE: 6/17/48
DRAWN BY:
CHECKED:
SHEET NO:
M-1
OF 8 SHEETS