

ROBERT F. STUHR ARCHITECT INC.

3121 CALIFORNIA AVE.
BAKERSFIELD, CALIF. 93304
(805) 327-1832

Robert F. Stuhr
ROBERT F. STUHR AIA C-1610
WILLIAM J. NEELY AIA C-16835
DANNY E. ORDOZ AIA C-14228

Donald R. Lawrence
Donald R. Lawrence & Associates
CONSULTING MECHANICAL ENGINEERS, HONOLULU
1001 K. ROAD, SUITE 202, HONOLULU, HI 96813
PHONE: 808-943-2211 FAX: 808-943-2211

Department of General Services
Office of the State Architect
AIA 11-1899
Approved by
State Architect
Revised by

AL 1000
1/8" UNIT PLANS FOR 'D', 'E', 'F' & 'G'

DATE: 5/27/88
BY: [Signature]

1/8" UNIT PLANS FOR 'D', 'E', 'F' & 'G'

PIONEER DRIVE SCHOOL MODERNIZATION
BAKERSFIELD CITY SCHOOL DISTRICT
BAKERSFIELD, KERN COUNTY, CALIFORNIA

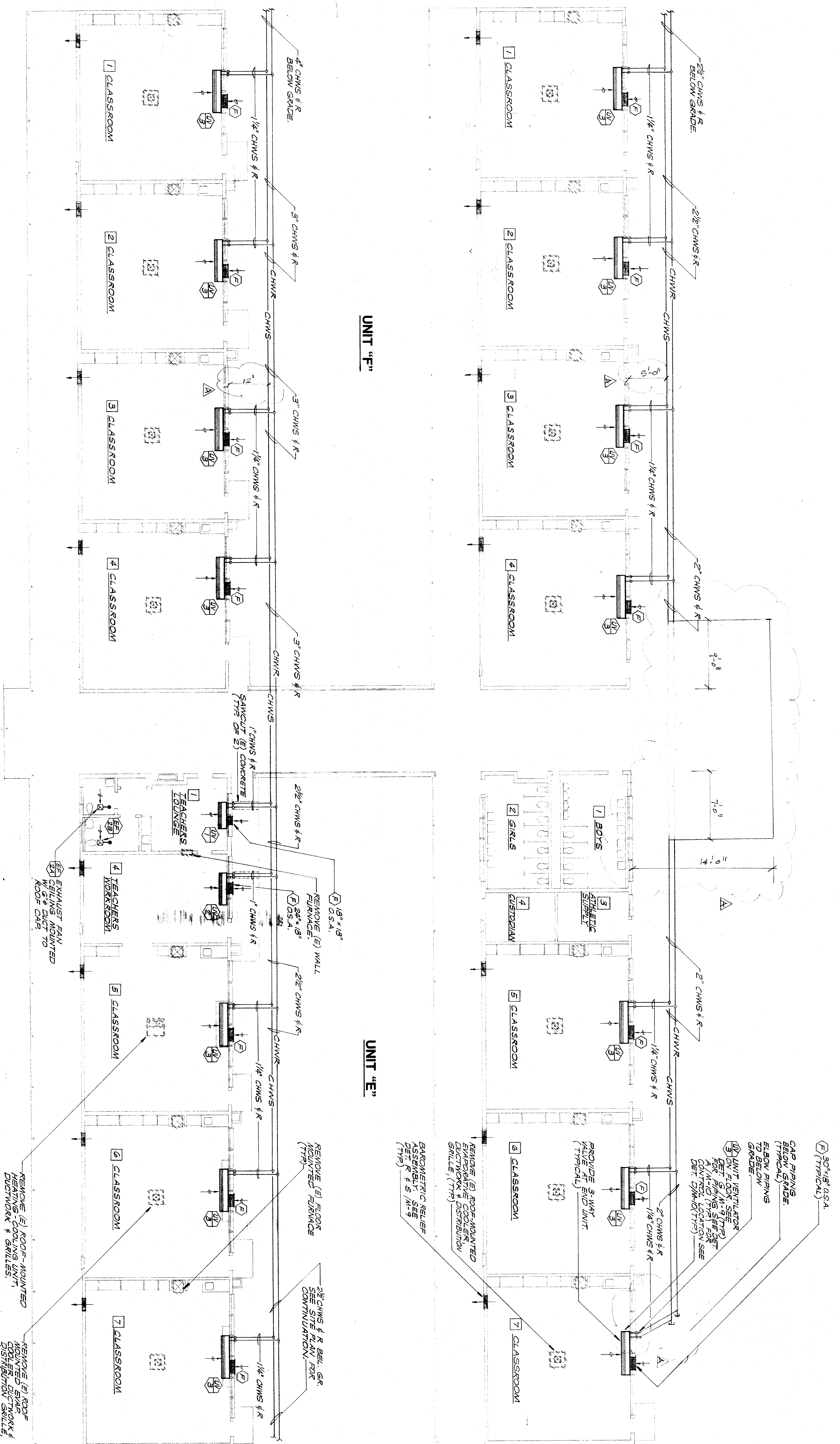
'As Built'

CHECK AND VERIFY ALL DIMENSIONS BEFORE PROCEEDING DISCREPANCIES TO THE ARCHITECT ALL CONSTRUCTION SHALL CONFORM TO UBC.

MARK	DATE	REVISIONS
△		
△		
△		
△		
△	5-4-92	1/2 CORRECT'S

JOB NO. _____
DRAWN: **D. EWMS**
CHECKED: **G. AYE**
DATE: _____

M
8
OF 11 SHEETS



AIR CONDITIONING PLAN
SCALE: 1/8" = 1'-0"

