

MARK	FIXTURE	CONNECTION SIZES	DESCRIPTION
S-2	SINK	2" 1-1/2" 1/2"	UNIT #8-2154-GR 21" X 18" SINGLE COMPARTMENT STAINLESS STEEL WITH A35 BASKET STRAINER AND AMERICAN STANDARD #2000-800 SINGLE LEVER FAUCET.
FD-1	FLOOR DRAIN	2" 1-1/2"	JAY R. SMITH #2005-8, 1/2" SQUARE NICKEL BRONZE STRAINER. PROVIDE APPROPRIATE CONNECTION WHEN APPLICABLE.
FS-1	FLOOR SINK	-	JAY R. SMITH #3100-122 12" X 12" BAIN, FLASHING AND WALL GATE. SEE PLAN FOR SIZE. INSTALL FLUSH WITH FINISHED FLOOR. PROVIDE FLUSH WITH PRIMER CONNECTION WHEN APPLICABLE.
DF-1	DRINKING FOUNTAIN	2" 1-1/2" 1/2"	WESTERN #11-A WALL-MOUNT WITH TWO VANDAL-PROOF VESSEL CARRIERS. R. SMITH #824-2 SUPPORT CARRIER.
DF-2	DRINKING FOUNTAIN	2" 1-1/2" 1/2"	WESTERN #43-PC WALL-MOUNT STAINLESS STEEL OPERATION RESISTANT BOTTOM PLATE AND JAY R. SMITH #824-2 SUPPORT CARRIER.
DF-3	DRINKING FOUNTAIN	2" 1-1/2" 1/2"	WESTERN #11-ANC WALL-MOUNT FOR WHEELCHAIR ACCESS WITH TWO VANDAL-PROOF BUBBLERS AND PUSH-BUTTON VALVES. AND JAY R. SMITH #824-2 SUPPORT CARRIER.
WH-1	WATER HEATER	3/4" 3/4"	A.O. SMITH #ELJF-10 10 GALLON STORAGE CAPACITY WITH ONE 1500 WATT T RELIEF VALVE. OPERATING HEIGHT = 130 LBS.
WB-1	WATER BIBB	3/4"	WATERPROOF RWP RUBBER BOPPE WALL HOSE VALVE WITH LOCKSHIELD. VACUUM BREAKER AND REMOVABLE TEE KEY. SPECIFICATIONS #P-11-11 DIST. UNITS.
TP-1	TRAP REMOVER	1/2"	CHICAGO #222-11 1/2" TRAP REMOVER. SPECIFICATIONS #P-11-11 DIST. UNITS.

MARK	FIXTURE	CONNECTION SIZES	DESCRIPTION
WC-1	WATER CLOSET	4" 2" 1"	AMERICAN STANDARD #424Z 12" WITH 3/8" ROVAL #110-3 FLUSH VALVE AND 3/8" ONSHUTE #99CC/SS PUSH-FRONT SEAT. ONSHUTE HIDE SIDE OR STALL.
WC-2	WATER CLOSET SEAT	-	ONSHUTE #4-210C 2" HIGH LIFT SEAT.
U-1	URINAL	2" 1-1/2" 1"	AMERICAN STANDARD #444-Z SUPPORT CARRIER. R. SMITH #824-2 SUPPORT CARRIER.
L-1	LAVATORY	2" 1-1/2" 1/2"	AMERICAN STANDARD #EN LUBRINE #4035-421 20" X 18" WITH #4211-015 GRID DRAIN, CHICAGO #235-512-VFC TIP-TAP™ AND JAY R. SMITH #824-2 SUPPORT CARRIER. FACET TO STAY OPEN FOR 10 SECONDS.
L-2	LAVATORY	2" 1-1/2" 1/2"	AMERICAN STANDARD #EN LUBRINE #4035-012 20" X 18" WITH #4211-015 GRID DRAIN, #2000-100 SINGLE LEVER FAUCET, AND JAY R. SMITH #700-2 SUPPORT CARRIER.
FL-1	FLUSH VALVE ASSEMBLY	1"	SLON #ROYAL #110-3 FLUSH VALVE. SLON #ROYAL #186-11 FLUSH VALVE.
FL-2	FLUSH VALVE ASSEMBLY	1"	CHICAGO #222-11 1/2" TRAP REMOVER. SPECIFICATIONS #P-11-11 DIST. UNITS.
L-1	LAVATORY TRIM	1/2"	SLON #ROYAL #110-3 FLUSH VALVE. SLON #ROYAL #186-11 FLUSH VALVE.
S-1	CLASSROOM SINK	2" 1-1/2" 1/2"	HANS #1110 24" X 18" ENAMELED CAST IRON WITH CHICAGO #235-512-VFC TIP-TAP™ AND JAY R. SMITH #824-2 SUPPORT CARRIER. FACET TO STAY OPEN FOR 10 SECONDS.

All mechanical and electrical equipment shall be braced or anchored to resist a horizontal force acting in any direction using the following criteria:

- Fixed Equipment on Grade 22# of Operating Weight
- Fixed Equipment on Structure 33# of Operating Weight
- Emergency Power Equipment on 33# of Operating Weight
- Emergency Power Equipment on 50# of Operating Weight

For floor joist mounted equipment use 2 X horizontal force. Simultaneous vertical force - use 1/3 X horizontal force.

Where anchorage details are not shown on the drawings the field engineer shall be subject to the approval of the MECHANICAL engineer and the field representative of the Office of the State Architect.

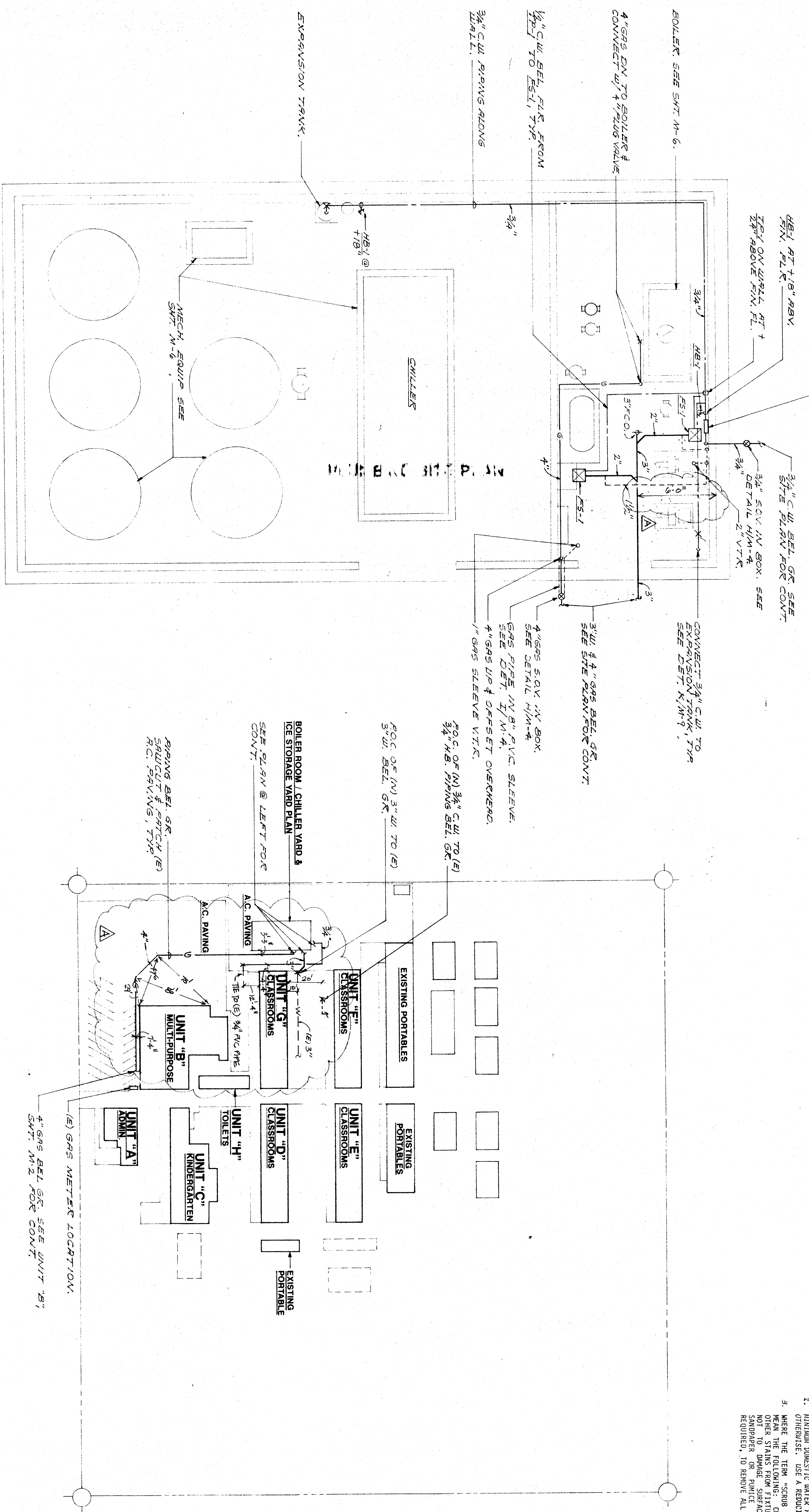
SYMBOL	PLUMBING LEGEND	ABBREVIATION
---	SOIL OR WASTE	S or W
---	VENT RISER	V
---	VENT THROUGH ROOF	TR
---	VENTS TO OUTSIDE	OW
---	DOMESTIC COLD WATER	CW
---	DOMESTIC HOT WATER RETURN	HW
---	DOMESTIC HOT WATER	HW
---	CONDENSATE DRAIN	CD
---	EXISTS	EX
---	EXISTING PLUMBING	EX
---	FLOOR CLEANOUT	FC
---	CEILING TO GROUND	CG
---	MALL CLEANOUT	MC
---	WATER MAIN	WM
---	WATER SERVICE LINE	WSL
---	WATER MAIN CONNECTION	WMC
---	EXISTING	EX
---	ROOF CEILING	RC
---	BELOW GROUND	BEL GR
---	TERRACE	TR
---	CONSTRUCTION	CON
---	SMALLER VALVE IN BOX	SV

GENERAL PROJECT NOTE - COORDINATION OF WORK:

Layout of materials, equipment and systems is generally diagrammatic unless specifically dimensioned. See work as shown offset for clarity. equipment support etc shall be carefully planned, prior to installation of any work, to avoid all interferences with each other, or with structural, electrical, architectural or other elements. Verify the conflicts shall be called to the attention of the Architect and the Engineer prior to the installation of any work or the ordering of any equipment.

NOTES:

- PLUMBING CONTRACTOR TO VERIFY EXACT LOCATION AND DEPTH OF POINTS OF CONNECTION TO EXISTING UTILITIES.
- MINIMUM DOMESTIC WATER PIPE SIZE TO BE 3/4" UNLESS NOTED OTHERWISE. USE A REDUCING ELB AT WALL IF NECESSARY.
- WHERE THE TERM "SCRUB CLEAN" IS USED, IT SHALL MEAN THE FOLLOWING: CLEAN ALL WATER STAINS AND NOT TO DAMAGE SURFACE OF FIXTURE. LET/WRY SANDPAPER OR PUMICE STONE MAY BE USED IF REQUIRED, TO REMOVE ALL STAINS.



**BOILER / CHILLER YARD PLAN**

SCALE: 1/4" = 1'-0"



**PLUMBING SITE PLAN**

SCALE: 1" = 50'-0"



**ROBERT F. STUHLER ARCHITECT INC.**

3121 CALIFORNIA AVE  
BAKERSFIELD, CA 93304  
(805) 327-1632

ROBERT F. STUHLER AIA C-1610  
WILLIAM J. MELBY AIA C-1833  
DANNY E. HOZIV AIA C-14728

**Daniel R. Lambert & Associates**  
MECHANICAL ENGINEERS  
1000 W. BAKER ST. SUITE 200  
BAKERSFIELD, CA 93304  
(805) 327-1632

3121 CALIFORNIA AVE  
BAKERSFIELD, CA 93304  
(805) 327-1632

3121 CALIFORNIA AVE  
BAKERSFIELD, CA 93304  
(805) 327-1632

3121 CALIFORNIA AVE  
BAKERSFIELD, CA 93304  
(805) 327-1632

**PIONEER DRIVE SCHOOL MODERNIZATION**  
**BAKERSFIELD CITY SCHOOL DISTRICT**  
BAKERSFIELD, KERN COUNTY, CALIFORNIA

**'As Built's'**

CHECK AND VERIFY ALL DIMENSIONS BEFORE PROCEEDING WITH THE WORK. REPORT ALL DISCREPANCIES TO THE ARCHITECT AND ENGINEER BEFORE CONSTRUCTION SHALL COMMENCE TO UBC.

MARK	DATE	REVISIONS
▲		
▲		
▲		
▲		
▲		

JOB NO. \_\_\_\_\_  
DRAWN BY: \_\_\_\_\_  
CHECKED BY: \_\_\_\_\_  
DATE: \_\_\_\_\_

**M**

05 // SHEETS