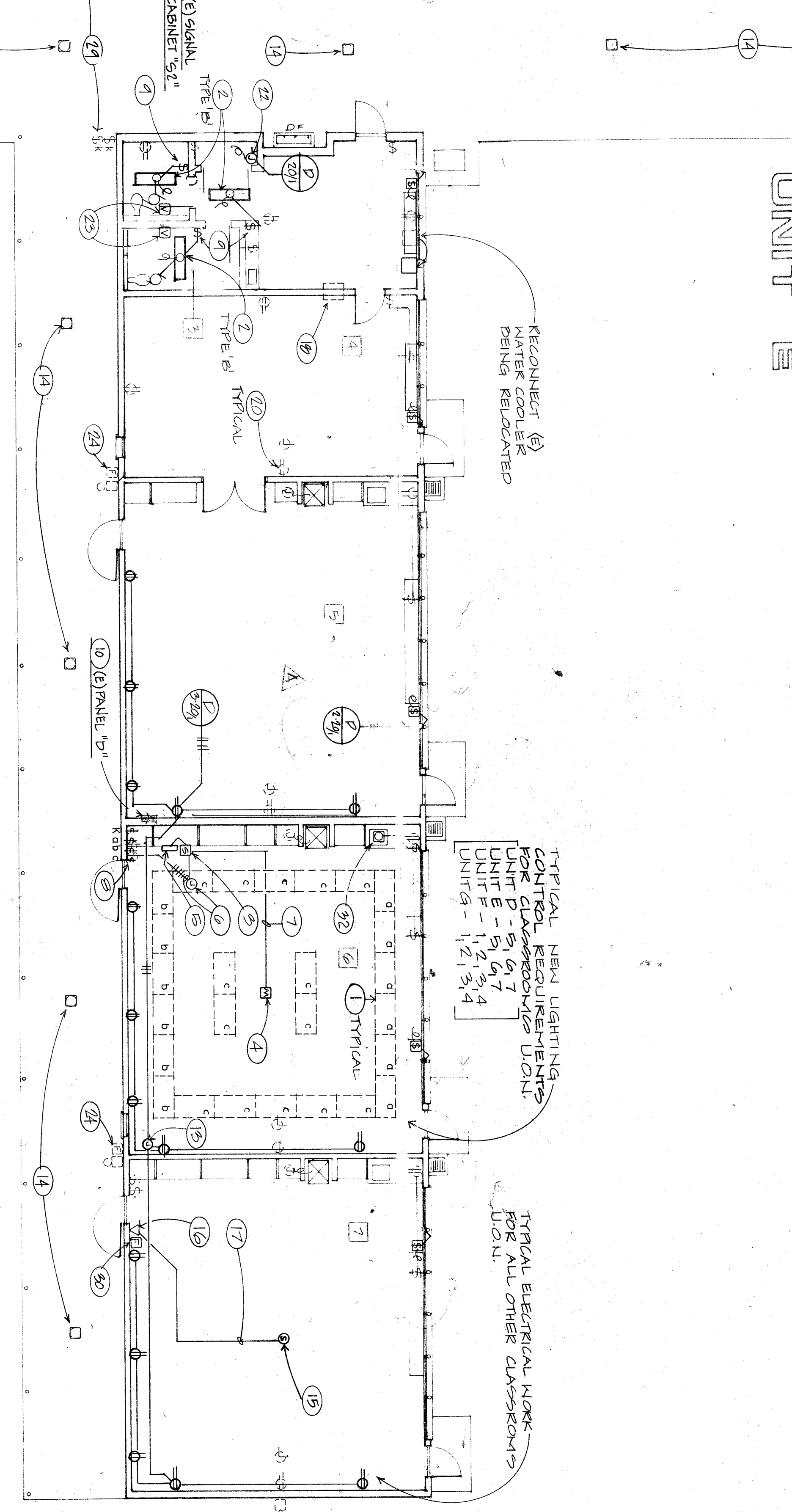
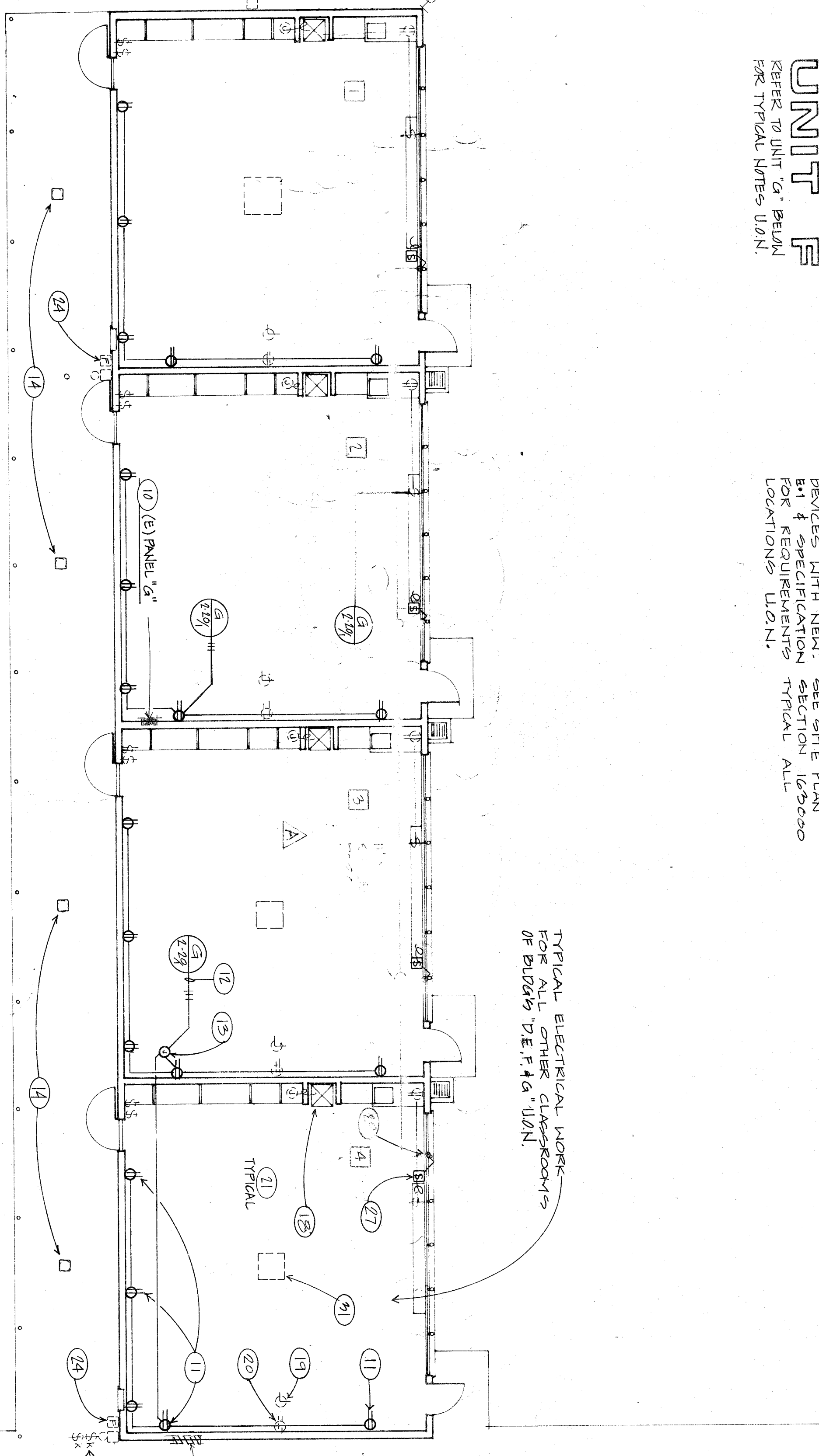
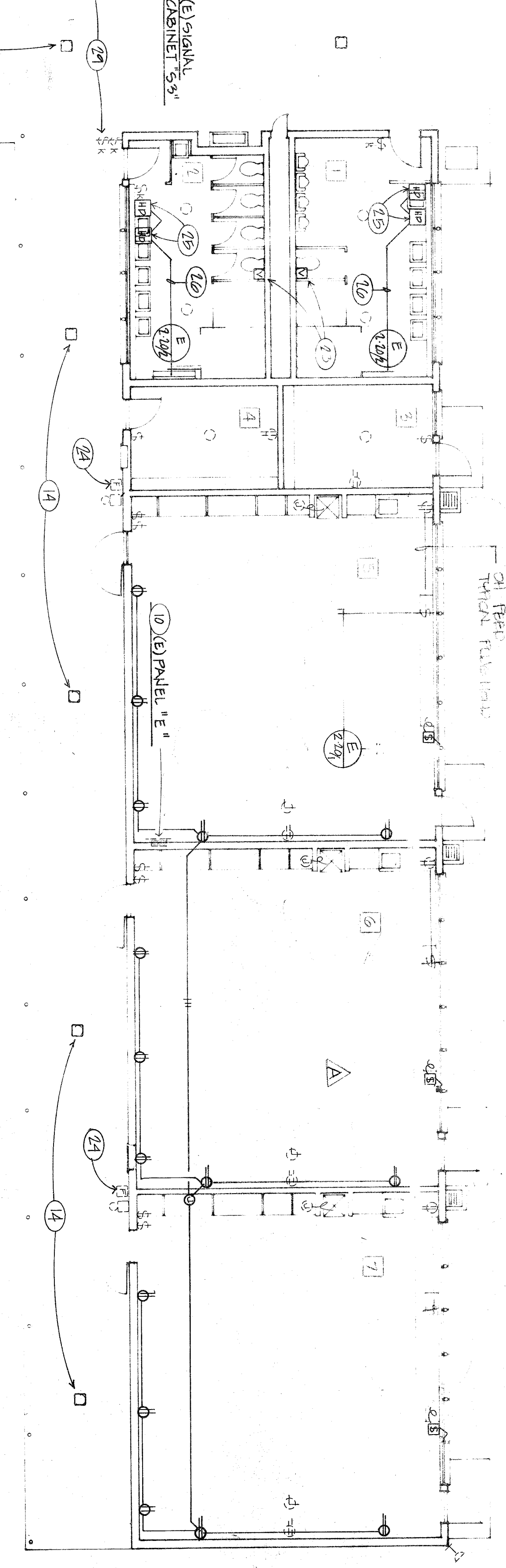
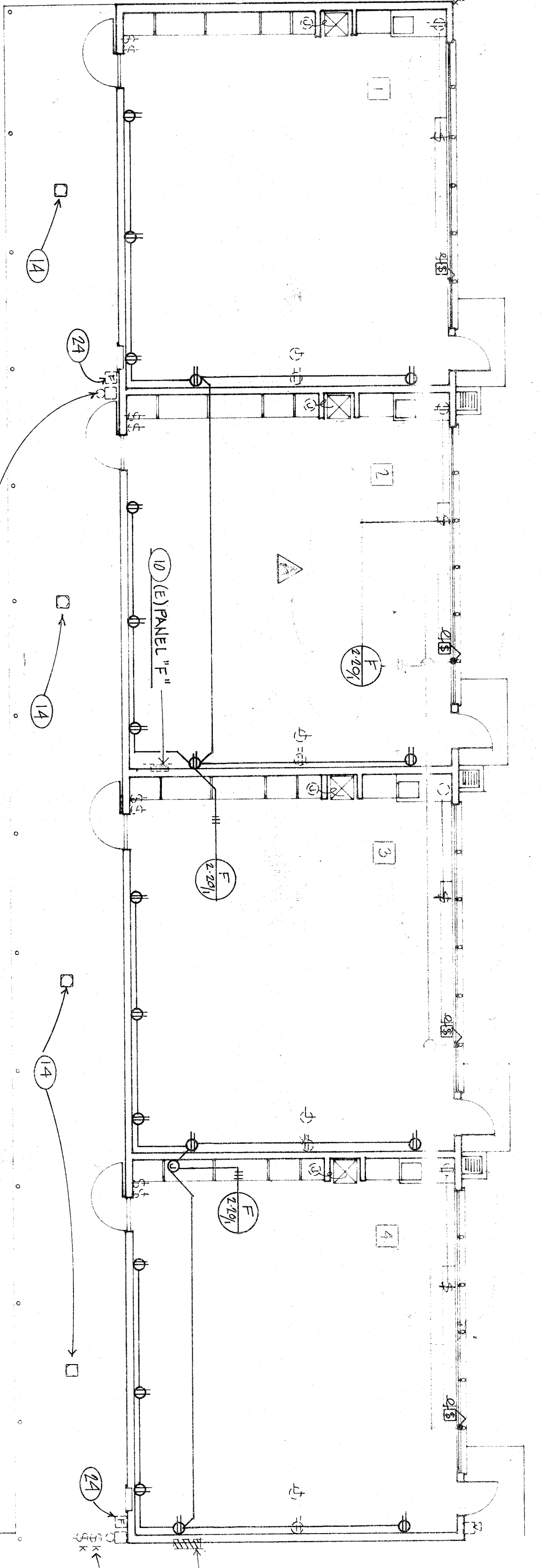


ELECTRICAL FLOOR PLAN REVISIONS

- 1 EXISTING FLUSH T-BAR FIXTURES IN THIS ROOM TO REMAIN. RECONNECT TO NEW HOWELL CONTROLS AND MOTION SENSOR PER NOTES BELOW.
- 2 INITIAL NEW FIXTURES (TYPE AND QUANTITY AS SHOWN). CONNECT TO EXISTING UNSWITCHED LIGHTING CIRCUIT IN ATTIC.
- 3 SWITCHES FOR MOTION SENSOR CONTROL ON WALL ABOVE T-BAR CEILING. WIRE PER DETAIL 1/15. PICK UP THE EXISTING LIGHTING CIRCUIT IN ATTIC. REMOVE THE LIGHTING CIRCUIT. SEE NOTE 20. 2,000 SQUARE FEET COVERAGES. WIRE PER DETAIL 1/15.
- 4 HOWELL LIGHTING CONTROLS, TWO CONTROL MODULES AND TWO OUTPUT MODULES. PLACE ON SWITCHED CIRCUIT. WIRE PER DETAIL 1/15. WIRE PER DETAIL 2/15. WIRE PER DETAIL 2/15.
- 5 REUSE EXISTING CONDUIT FROM SWITCH BOX TO ATTIC FOR NEW SWITCH WIRING. PROVIDE ADDITIONAL CONDUIT TO NEW SWITCH BOX AS REQUIRED FOR WIRING AND ABLE TO FIT IN EXISTING CONDUIT. USE ONLY 1/2" O.D. 3/4" I.D. LIGHTING CONTROL WIRING PER DETAIL 2/15.
- 6 REPLACE TWO EXISTING SWITCHES WITH THREE NEW SWITCHES AND ONE NEW PROVIDE NEW ADJACENT SURFACE BOX FOR SWITCHES WITH CONCEALED FEED TO EXISTING BOX (CONTRACTOR OPTION). REUSE EXISTING CONDUIT TO ATTIC FOR NEW WIRING TO NEW FIXTURES PER NOTE 3. SEE DETAIL 1/15 & 2/15.
- 7 PROVIDE NEW LIGHT SWITCH & CONNECT TO FIXTURE AS SHOWN.
- 8 REPLACE EXISTING SUB-PANEL PER PANEL SCHEDULE REPLACEMENT ON SHEET E-5.
- 9 INSTALL NEW OUTLETS FLUSH IN WALL AS SHOWN. RUN ALL FEEDS, CONCEPT IN STUD WALLS. OUT PATCH AND REPAIR WALL AS REQUIRED.
- 10 HORN IN TO EXISTING PANEL WITH 3/4" I.D. - 3 #12 + GROUND. CONNECT TO 2" DIA. DUCT BURS UP TO 1" MIN FEED GENERAL ROOM WALL TO PANEL. CONTRACTOR OPTION TO REUSE EXISTING DUCT FOR NEW FEEDS. SEE DETAIL 1/15.
- 11 REPLACE EXISTING EXTERIOR RECESS FIXTURE WITH NEW TYPE A, 2000 LUMENS PER FOOT. VERIFY EXACT LOCATION WITH ARCHITECT. VERIFY OPERATING AS REQUIRED FOR INSTALLATION OF NEW FIXTURE.
- 12 PROVIDE NEW FLUSH CEILING SPEAKER. CONSULTATIVE LOCATION WITH ARCHITECT. VERIFY EXACT LOCATION WITH ARCHITECT. REFER TO PARTIAL PLAN SECTION 1/200 FOR REQUIREMENTS. REFER TO PARTIAL PLAN SHEET E1 FOR NEW INTERIOR WORK.
- 13 PROVIDE NEW INTERIOR HANGERS ON WALL. RUN FEED, GROUND, IN STUD WALL. ONE 1" O.D. PIPE BETWEEN SPEAKER AND HANGER.
- 14 1/2" I.D. O.D. PIPE BETWEEN SPEAKER AND HANGER.
- 15 DISCONNECT ALL ELECTRICAL SERVICES TO HEATER UNIT BEING REMOVED.
- 16 EXISTING CLOCK. SWITCH TO REMAIN. NO WORK REQUIRED.
- 17 EXISTING OUTLETS. PROVIDE EXTENSION BOX AS REQUIRED AND REINSTALL FLUSH WITH NEW WALL COVERING.
- 18 REMOVE ANY EXPOSED TUBE CONDUIT AND WIRE IN THIS ROOM.
- 19 CONNECT NEW ELECTRIC WATER HEATER. VERIFY REQUIREMENTS WITH MECHANICAL.
- 20 INSTALL NEW FIRE ALARM VISUAL DEVICE ON WALL. 6" BELOW CEILING. SEE SPECIFICATION SECTION 1/200 FOR REQUIREMENTS. CONNECT WITH 1/2" I.D. 4 #14 SIGNAL CIRCUIT. TYPICAL TO ALL VISUALS. REFER TO SHEET E1 FOR NEW FIRE ALARM WORK.
- 21 REMOVE EXISTING FIRE ALARM PULL STATION. PULL OUT THE WIRING. REFER TO PARTIAL SITE ELECTRICAL PLAN E1 FOR NEW FIRE ALARM WORK.
- 22 CONNECT NEW HORN SPEAKER. VERIFY REQUIREMENTS WITH HAND DRYER SUPPLIER. VERIFY EXACT LOCATION WITH ARCHITECT. EACH REVER ON SEPARATE REVER CIRCUIT.
- 23 3/4" I.D. 4 #12 + 1 #12 GND TO PANEL NOTED. PROVIDE SEPARATE 20/25 DCT BUS FOR EACH DRYER.
- 24 CONNECT NEW VENTILATING UNIT. PROVIDE MANUAL MOTOR STARTING SWITCH (SEE DETAIL 1/15) ON WALL NEXT TO VENT UNIT.
- 25 RUN EXPOSED WIRE AND WIRE TO MATCH SERVICE FINISH DOWN EXISTING WALL. VERIFY EXACT ROUTING WITH ARCHITECT BEFORE INSTALLING.
- 26 REPLACE EXISTING NEW SWITCHES WITH NEW AND RECONNECT TO SWITCH PLAN. E1 FOR NEW FIRE ALARM WORK.
- 27 REMOVE EXISTING NEW SWITCHES TO EXISTING UNIT. REFER TO PARTIAL SITE ELECTRICAL PLAN E1 FOR NEW FIRE ALARM WORK.
- 28 REMOVE EXISTING NEW SWITCHES TO EXISTING UNIT. REFER TO PARTIAL SITE ELECTRICAL PLAN E1 FOR NEW FIRE ALARM WORK.
- 29 REMOVE EXISTING NEW SWITCHES TO EXISTING UNIT. REFER TO PARTIAL SITE ELECTRICAL PLAN E1 FOR NEW FIRE ALARM WORK.
- 30 REMOVE EXISTING NEW SWITCHES TO EXISTING UNIT. REFER TO PARTIAL SITE ELECTRICAL PLAN E1 FOR NEW FIRE ALARM WORK.
- 31 REMOVE EXISTING NEW SWITCHES TO EXISTING UNIT. REFER TO PARTIAL SITE ELECTRICAL PLAN E1 FOR NEW FIRE ALARM WORK.
- 32 REMOVE EXISTING NEW SWITCHES TO EXISTING UNIT. REFER TO PARTIAL SITE ELECTRICAL PLAN E1 FOR NEW FIRE ALARM WORK.

GENERAL NOTES (TYPICAL AT ALL ROOMS OF BUILDING UNLESS INDICATED OTHERWISE):

- A SEE MECHANICAL AND FINISHING DRAWINGS FOR EXACT LOCATIONS OF ALL HVAC AND PUMPING EQUIPMENT. REMOVE EXISTING CONDUIT AND WIRING FOR RECONNECT. EQUIPMENT CONTROLS IS TO BE PROVIDED AND INSTALLED BY ELECTRICAL CONTRACTOR U.O.N. VERIFY ALL REQUIREMENTS WITH MECHANICAL OR BY MECHANICAL CONTRACTOR.
- B REMOVE ANY EXISTING DEVICES (RECEPTACLES, FIRE ALARM, BIRCAD ALARM, SWITCHES, PULLSTATION, ETC.) WHICH INTERFERE WITH THE INSTALLATION OF THESE NEW DEVICES. IS COMPROMISED. PROVIDE EXTENSION RINGS FOR ALL DEVICES TO BE REMOVED. WIRE PER DETAIL 1/15. SEE ARCHITECTURAL DRAWINGS FOR WALL RECONNECT SCHEDULES.
- C REMOVE ALL ELECTRICAL DEVICES IN WALLS BEING REMOVED. RE-ROUTE AND RECONNECT ANY REMOVED DEVICES. PULL OUT ANY TUBE WIRE AND BLANK ONE BOX.
- D REMOVE ALL EXISTING DEVICES IN WALLS BEING REMOVED. RE-ROUTE AND RECONNECT ANY REMOVED DEVICES. PULL OUT ANY TUBE WIRE AND BLANK ONE BOX.
- E REMOVE ANY EXISTING SURFACE MOUNTED DEVICES THAT ARE TO REMAIN. RECONNECT ANY SERVICES/CONDUIT AND CONCEALED INTO EXISTING STUD WALL. IF HANGING WALL OR IF EXISTING CONDITIONS DO NOT PERMIT EXISTING SERVICE DEVICE/CONDUIT TO BE FINISHED INTO WALL, THEN RECONNECT WITH SERVICE MOUNTED VERTICAL AND/OR HORIZONTAL SERVICE. FINISH AND REPAIR WALL WHERE BROKEN INTO TO MATCH EXISTING. NEW WALL BOARD AT EXISTING WALLS. VERIFY ANY EXPOSED RUNS WITH ARCHITECT.
- F WHERE AN EXISTING CONDUIT OUTLET OR SWITCH IS SHOWN TO REMAIN, PROVIDE NEW DEVICE AND REPLACE ANY DAMAGED COVER PLATES. REPLACE ANY NON-GROUNDING TYPE RECEPTACLES WITH NEW 2-POLE, 3 WIRE GROUNDING TYPE.
- G ALL EQUIPMENT AND FIXTURES TO BE REMOVED SHALL REMAIN THE PROPERTY OF THE GARDENFIELD CITY SCHOOL DISTRICT. AT THE DISCRETION OF THE SCHOOL DISTRICT, THE CONTRACTOR SHALL EITHER REMOVE THESE EQUIPMENT TO THE SCHOOL DISTRICT WAREHOUSE OR DISPOSE OF IT IN AN APPROVED MANNER.
- H NOT ALL EXISTING ELECTRICAL EQUIPMENT/DEVICES OR EXPOSED CONDUIT ARE SHOWN ON ELECTRICAL DRAWINGS. ELECTRICAL CONTRACTOR TO VERIFY, RECONNECT OR TO REMOVE. VERIFY EXISTING CONDITIONS IN FIELD.
- I RUN NEW NEW BRANCH CIRCUIT FEEDS IN ATTIC SPACE. NO EXPOSED CONDUIT DURING PERMITTING OR FISH DOWN WALLS WITH NEW HOE RIMS TO SUB-PANELS. USE WIREHOLD WHO WHERE NOT POSSIBLE. SEE NOTE D. VERIFY ANY EXPOSED ROUTING WITH ARCHITECT AND SCHOOLS MAINTENANCE SUPERINTENDENT.
- J NEW NEW CEILING IS INSTALLED RELOCATE AIR DEVICES (CLOCK, SPEAKERS, BIRCAD ALARM, ETC.) TO BELOW NEW CEILING LEVEL AND RECONNECT. RELOCATE ANY SWITCHES OR CONTROLLING DEVICES THAT ARE ABOVE 48" DOWN TO 48" TO CENTER TO COMPLY WITH HANDICAP REQUIREMENTS AND RECONNECT.



UNIT F  
REFER TO UNIT G PLAN FOR TYPICAL NOTES U.O.N.

REPLACE EXISTING PROGRAM SYSTEM DEVICES WITH NEW. SEE SITE PLAN FOR SPECIFICATION SECTION 1/200 FOR TYPICAL NOTES U.O.N.

TYPICAL ELECTRICAL WORK FOR ALL OTHER CLASSROOMS OF BUILDING DE F & G UNIT

RECONNECT (B) CONTROL REQUIREMENTS UNIT FOR CLASSROOMS UNIT D, E, F, G, H, I, J, K, L, M, N, O, P, Q, R, S, T, U, V, W, X, Y, Z.

TYPICAL ELECTRICAL WORK FOR ALL OTHER CLASSROOMS OF BUILDING DE F & G UNIT

SCALE: 1/8" = 1'-0"

**ROBERT F. STUHR ARCHITECT INC.**  
 3121 CALIFORNIA AVE.  
 BAKERSFIELD, CA 93304  
 (805) 327-1632

**CONNELLYS ENGINEERING, INC.**  
 Consulting Electrical Engineer  
 918 W. Main St., Ste. 201  
 Bakersfield, CA 93304  
 (805) 327-1632

ROBERT F. STUHR AIA C-1810  
 WILLIAM J. MELBY AIA C-18855  
 DANNY E. ORDI AIA C-14728

**ELECTRICAL PLANS**  
 UNITS D, E, F & G  
**PIONEER DRIVE SCHOOL**  
**MODERNIZATION**  
**BAKERSFIELD CITY SCHOOL DISTRICT**  
 BAKERSFIELD, KERN COUNTY, CALIFORNIA

**'As Built'**

CHECK AND VERIFY ALL DIMENSIONS BEFORE PROCEEDING WITH THE WORK. REPORT DISCREPANCIES TO THE ARCHITECT IMMEDIATELY. SHALL CONFIRM TO UBC.

MARK	DATE	REVISIONS

JOB NO. 661  
 DRAWN BY [Signature]  
 CHECKED BY [Signature]  
 DATE [ ]

OF 5 SHEETS

3