

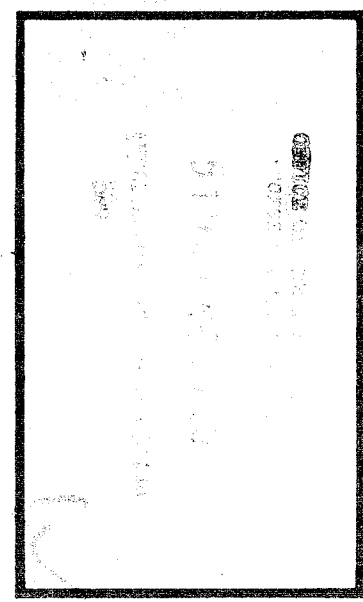
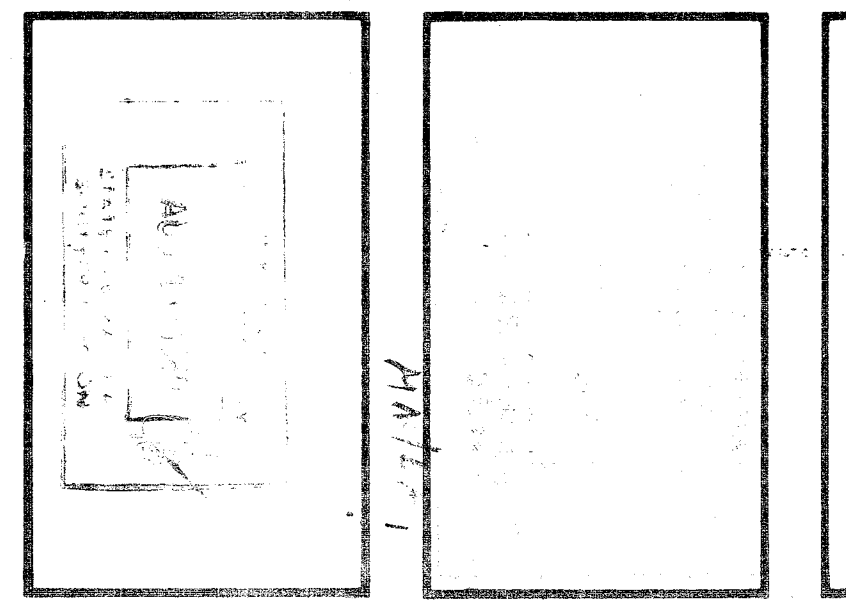


ROBERT F. STUHLER ARCHITECT INC.

3121 CALIFORNIA AVE. BAKERSFIELD, CA 93304 (805) 327-1632

ROBERT F. STUHLER AIA C-1610
WILLIAM J. WELBY AIA C-16835
DAVANY E. OROZCO AIA C-14728

CORNELIUS ENGINEERING, INC.
Professional Engineer
918 W. Main St. - Rm. 201
Bakersfield, CA 93301
CORNELIUS, CALIFORNIA 7188



ELECTRICAL PLANS
UNITS A, B & C
PIONEER DRIVE MODERNIZATION
BAKERSFIELD CITY SCHOOL DISTRICT
BAKERSFIELD, KERN COUNTY, CALIFORNIA

'As Built'

CHECK AND VERIFY ALL DIMENSIONS BEFORE PROCEEDING WITH THE WORK. REPORT ALL DISCREPANCIES TO THE ARCHITECT/ENGINEER IMMEDIATELY. ALL WORK SHALL CONFORM TO UBC.

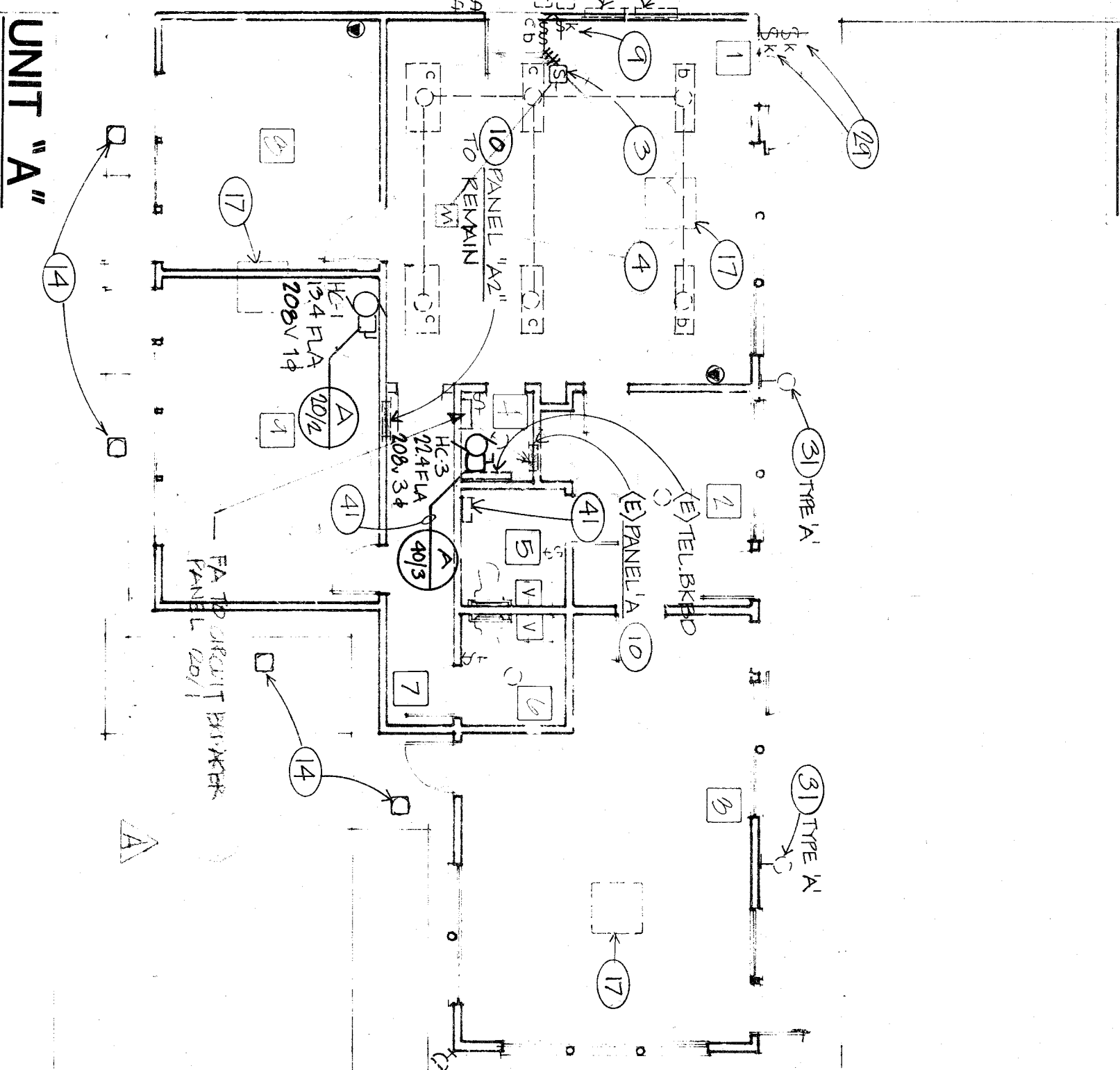
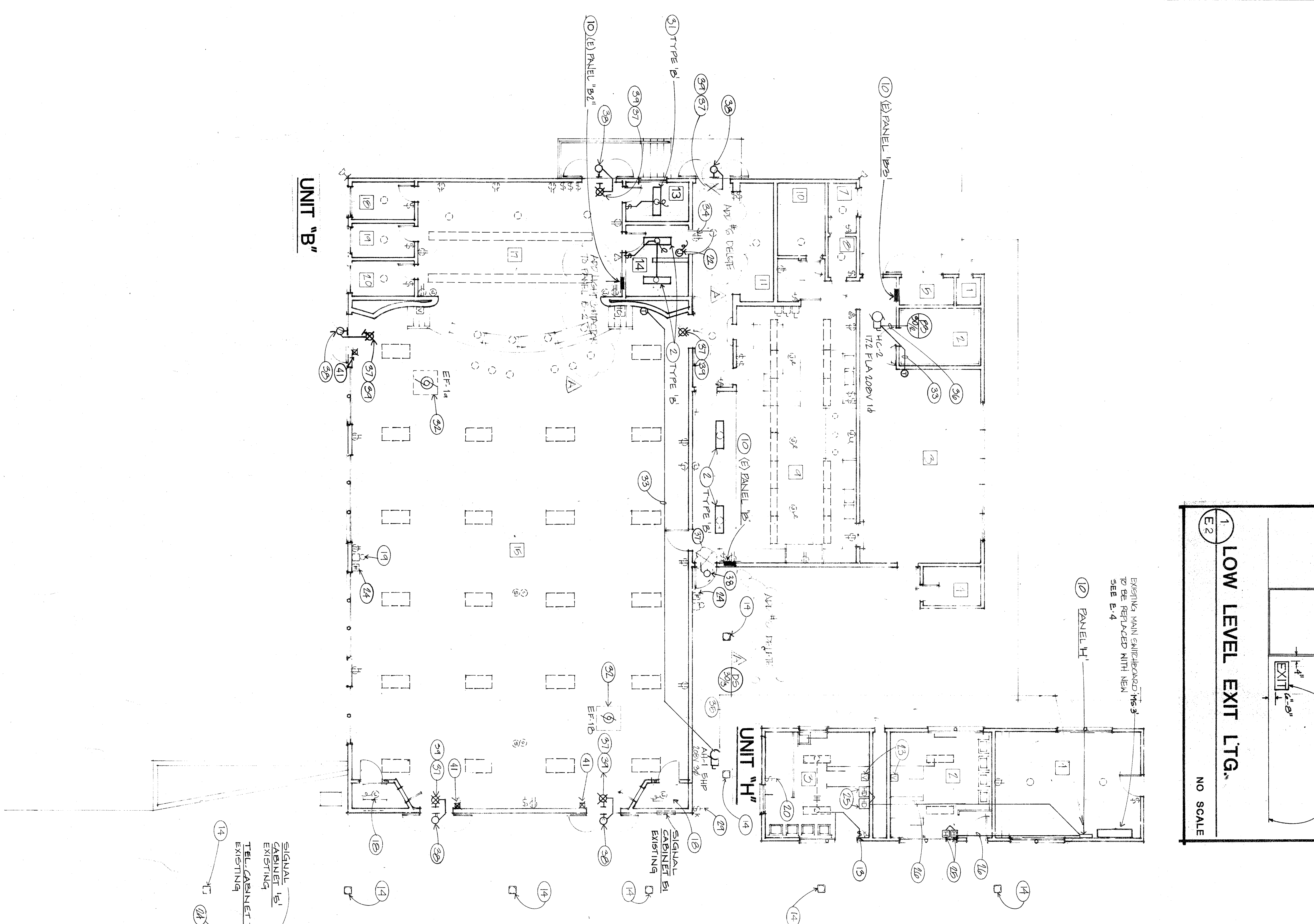
MARK DATE REVISIONS

MARK	DATE	REVISIONS
Δ		
Δ		
Δ		
Δ		



NO. 5 SHEETS

- 1. EXISTING LIGHT FIXTURES IN THIS ROOM TO REMAIN. RECONNECT TO NEW HEADWALL CONTROLS AND NOTION SENSOR PER NOTE (2) & (3) BELOW.
- 2. INSTALL NEW FINISHED TYPE AND QUANTITY AS SHOWN. CONNECT TO EXISTING LIGHTING CIRCUIT IN ATTIC.
- 3. SWITCHCHECK FOR NOTION SENSOR CONTROL ON WALL ABOVE TYPICAL CEILING. WIRE PER DETAIL 1/YES.
- 4. NOTION SENSOR ON BOTTOM OF CEILING. 18" x 24" SQUARE FEET CONDENSE. WIRE PER DETAIL 1/YES.
- 5. GENERAL LIGHTING CONTROLS, TWO CONTROL MODULES AND TWO OUTPUT MODULES. ONE PAIR FOR "A" AND OTHER PAIR FOR "B". SWITCHED FROM "A" TO "B" BY SWITCHING FROM "A" TO "B" POSITION. REFER TO SHEET E1 FOR NEW FIRE ALARM NOTION SENSOR PER DETAIL 1/YES.
- 6. REUSE EXISTING CONDUIT FROM SWITCH BOX TO ATTIC FOR NEW SWITCH WIRING. PROVIDE ADDITIONAL CONDUIT TO NEW SWITCH BOX AS REQUIRED FOR WIRING NOT TO BE FIT IN EXISTING CONDUIT. SHEET AS (3) EXCEPT ONE SET OF MODULES.
- 7. EXISTING TWO GANG SWITCHES WITH THESE NEW SWITCHES, AND ONE NEW SET SWITCH. REMOVE EXISTING GANG BOX WITH 4 GANG FLUSH OR PROVIDE NEW ADJUSTER SURFACE BOX FOR SWITCHES FOR NEW WIRING TO NEW SWITCHES PER NOTE (2) AND (3). SEE DETAIL 1/YES.
- 8. EXISTING GANG BOX WITH 4 GANG FLUSH OR PROVIDE NEW ADJUSTER SURFACE BOX FOR SWITCHES FOR NEW WIRING TO NEW SWITCHES PER NOTE (2) AND (3). SEE DETAIL 1/YES.
- 9. ONE AS NOTE (3) EXCEPT REPLACE WITH TWO NEW SWITCHES AND ONE NEW SET SWITCH. IN ROOMS WITH NEW WIRING.
- 10. REMOVE EXISTING SUB-PANEL PER PANEL SCHEDULE REPLACEMENT ON SHEET E-3.
- 11. REMOVE EXISTING PANEL IN HALL OF NEW CONSTRUCTION. INTERCEPT ALL EXISTING FEEDERS AND MAIN FEEDERS TO EXISTING PANEL WITH NEW TYPE "A" AND RECONNECT TO EXISTING FEEDERS. "TYPICAL A" PER SHEET E-3.
- 12. REMOVE NEW FLASH CEILING SPEAKER. CONDENSE LOCATION WITH SPEAKER FEEDER. REFER TO SHEET E1 FOR NEW INTERCOM WIRING. CONDENSE LOCATION WITH SPEAKER FEEDER. REFER TO SHEET E1 FOR NEW INTERCOM WIRING.
- 13. DISCONNECT ALL ELECTRICAL SERVICES TO DOWN-COOL UNIT BEING REMOVED. REMOVE AND DISCONNECT ALL ELECTRICAL SERVICES TO BEARS UNIT BEING REMOVED. REMOVE AND DISCONNECT ALL ELECTRICAL SERVICES TO BEARS UNIT BEING REMOVED. REMOVE AND DISCONNECT ALL ELECTRICAL SERVICES TO BEARS UNIT BEING REMOVED. REMOVE AND DISCONNECT ALL ELECTRICAL SERVICES TO BEARS UNIT BEING REMOVED. REMOVE AND DISCONNECT ALL ELECTRICAL SERVICES TO BEARS UNIT BEING REMOVED.
- 14. DISCONNECT ALL ELECTRICAL SERVICES TO DOWN-COOL UNIT BEING REMOVED. REMOVE AND DISCONNECT ALL ELECTRICAL SERVICES TO BEARS UNIT BEING REMOVED. REMOVE AND DISCONNECT ALL ELECTRICAL SERVICES TO BEARS UNIT BEING REMOVED. REMOVE AND DISCONNECT ALL ELECTRICAL SERVICES TO BEARS UNIT BEING REMOVED. REMOVE AND DISCONNECT ALL ELECTRICAL SERVICES TO BEARS UNIT BEING REMOVED.
- 15. DISCONNECT ALL ELECTRICAL SERVICES TO DOWN-COOL UNIT BEING REMOVED. REMOVE AND DISCONNECT ALL ELECTRICAL SERVICES TO BEARS UNIT BEING REMOVED. REMOVE AND DISCONNECT ALL ELECTRICAL SERVICES TO BEARS UNIT BEING REMOVED. REMOVE AND DISCONNECT ALL ELECTRICAL SERVICES TO BEARS UNIT BEING REMOVED. REMOVE AND DISCONNECT ALL ELECTRICAL SERVICES TO BEARS UNIT BEING REMOVED.
- 16. DISCONNECT ALL ELECTRICAL SERVICES TO DOWN-COOL UNIT BEING REMOVED. REMOVE AND DISCONNECT ALL ELECTRICAL SERVICES TO BEARS UNIT BEING REMOVED. REMOVE AND DISCONNECT ALL ELECTRICAL SERVICES TO BEARS UNIT BEING REMOVED. REMOVE AND DISCONNECT ALL ELECTRICAL SERVICES TO BEARS UNIT BEING REMOVED. REMOVE AND DISCONNECT ALL ELECTRICAL SERVICES TO BEARS UNIT BEING REMOVED.
- 17. DISCONNECT ALL ELECTRICAL SERVICES TO DOWN-COOL UNIT BEING REMOVED. REMOVE AND DISCONNECT ALL ELECTRICAL SERVICES TO BEARS UNIT BEING REMOVED. REMOVE AND DISCONNECT ALL ELECTRICAL SERVICES TO BEARS UNIT BEING REMOVED. REMOVE AND DISCONNECT ALL ELECTRICAL SERVICES TO BEARS UNIT BEING REMOVED. REMOVE AND DISCONNECT ALL ELECTRICAL SERVICES TO BEARS UNIT BEING REMOVED.
- 18. DISCONNECT ALL ELECTRICAL SERVICES TO DOWN-COOL UNIT BEING REMOVED. REMOVE AND DISCONNECT ALL ELECTRICAL SERVICES TO BEARS UNIT BEING REMOVED. REMOVE AND DISCONNECT ALL ELECTRICAL SERVICES TO BEARS UNIT BEING REMOVED. REMOVE AND DISCONNECT ALL ELECTRICAL SERVICES TO BEARS UNIT BEING REMOVED. REMOVE AND DISCONNECT ALL ELECTRICAL SERVICES TO BEARS UNIT BEING REMOVED.
- 19. DISCONNECT ALL ELECTRICAL SERVICES TO DOWN-COOL UNIT BEING REMOVED. REMOVE AND DISCONNECT ALL ELECTRICAL SERVICES TO BEARS UNIT BEING REMOVED. REMOVE AND DISCONNECT ALL ELECTRICAL SERVICES TO BEARS UNIT BEING REMOVED. REMOVE AND DISCONNECT ALL ELECTRICAL SERVICES TO BEARS UNIT BEING REMOVED. REMOVE AND DISCONNECT ALL ELECTRICAL SERVICES TO BEARS UNIT BEING REMOVED.
- 20. EXISTING GROUND SYSTEM TO REMAIN. NO WORK REQUIRED.
- 21. REMOVE EXISTING LIGHT SWITCHES AND PULL OUT ANY LEE WIRE. RECONNECT EXISTING LIGHT FIXTURES TO NEW SWITCHES AS SHOWN.
- 22. REMOVE ANY EXPOSED LEE CONDUIT AND WIRE IN THIS ROOM.
- 23. REMOVE NEW WIRE/SPUR WIRE. VERIFY REQUIREMENTS WITH ALL CITY DEPARTMENTS. VERIFY ALL WIRING PER DETAIL 1/YES.
- 24. INSTALL NEW FIRE ALARM WIRING. SCENE ON WALL 4" FROM CEILING. SEE SPECIFICATION SECTION 5.04 FOR REQUIREMENTS. CONNECT WITH 7/8" x 4 #4 STEEL CONDUIT. TYPICAL TO ALL VISUALS. REFER TO SHEET E1 FOR NEW FIRE ALARM WIRING.
- 25. REMOVE EXISTING FIRE ALARM PULL STATION. PULL OUT LEE WIRING. REFER TO PARTIAL SITE PLAN FOR EXISTING FIRE ALARM WIRING.
- 26. CONNECT NEW HAND OPERATED WIRING. VERIFY REQUIREMENTS WITH ALL CITY DEPARTMENTS. VERIFY EXISTING CONDUIT WITH WIRE/SPUR. EACH END ON SEPARATE 3/4" CONDUIT.
- 27. ELECTRICAL PLAN E1 FOR NEW FIRE ALARM WIRING.
- 28. CONNECT NEW WIRE/SPUR WIRING. VERIFY REQUIREMENTS WITH ALL CITY DEPARTMENTS. VERIFY EXISTING CONDUIT WITH WIRE/SPUR. EACH END ON SEPARATE 3/4" CONDUIT.
- 29. CONNECT NEW WIRE/SPUR WIRING. VERIFY REQUIREMENTS WITH ALL CITY DEPARTMENTS. VERIFY EXISTING CONDUIT WITH WIRE/SPUR. EACH END ON SEPARATE 3/4" CONDUIT.
- 30. REMOVE EXISTING WIRING FROM WINDOW FRAME. VERIFY EXACT ROUTING WITH ARCHITECT BEFORE INSTALLING.
- 31. REMOVE EXISTING NEW SWITCHES WITH NEW AND RECONNECT TO EXISTING SWITCHES. REFER TO PARTIAL SITE PLAN, E1 FOR NEW FIRE ALARM WIRING.
- 32. NEW FIRE ALARM PULL STATION. REFER TO PARTIAL SITE PLAN, E1 FOR NEW FIRE ALARM WIRING.
- 33. REMOVE EXISTING WIRING WITH NEW NOTES AND RECONNECT TO EXISTING SWITCHES. REFER TO PARTIAL SITE PLAN, E1 FOR NEW FIRE ALARM WIRING.
- 34. EXISTING GROUND SYSTEM TO REMAIN. NO WORK REQUIRED.
- 35. REMOVE EXISTING WIRING FROM WINDOW FRAME. VERIFY EXACT ROUTING WITH ARCHITECT BEFORE INSTALLING.
- 36. REMOVE EXISTING WIRING FROM WINDOW FRAME. VERIFY EXACT ROUTING WITH ARCHITECT BEFORE INSTALLING.
- 37. REMOVE EXISTING WIRING FROM WINDOW FRAME. VERIFY EXACT ROUTING WITH ARCHITECT BEFORE INSTALLING.
- 38. REMOVE EXISTING WIRING FROM WINDOW FRAME. VERIFY EXACT ROUTING WITH ARCHITECT BEFORE INSTALLING.
- 39. REMOVE EXISTING WIRING FROM WINDOW FRAME. VERIFY EXACT ROUTING WITH ARCHITECT BEFORE INSTALLING.
- 40. REMOVE EXISTING WIRING FROM WINDOW FRAME. VERIFY EXACT ROUTING WITH ARCHITECT BEFORE INSTALLING.
- 41. INSTALL LOW LEVEL SELF-LUMINOUS EXIT SIGN TYPE "XL" SEE DETAIL 1/YES.



ELECTRICAL PLANS

SCALE: 1/8" = 1' - 0"